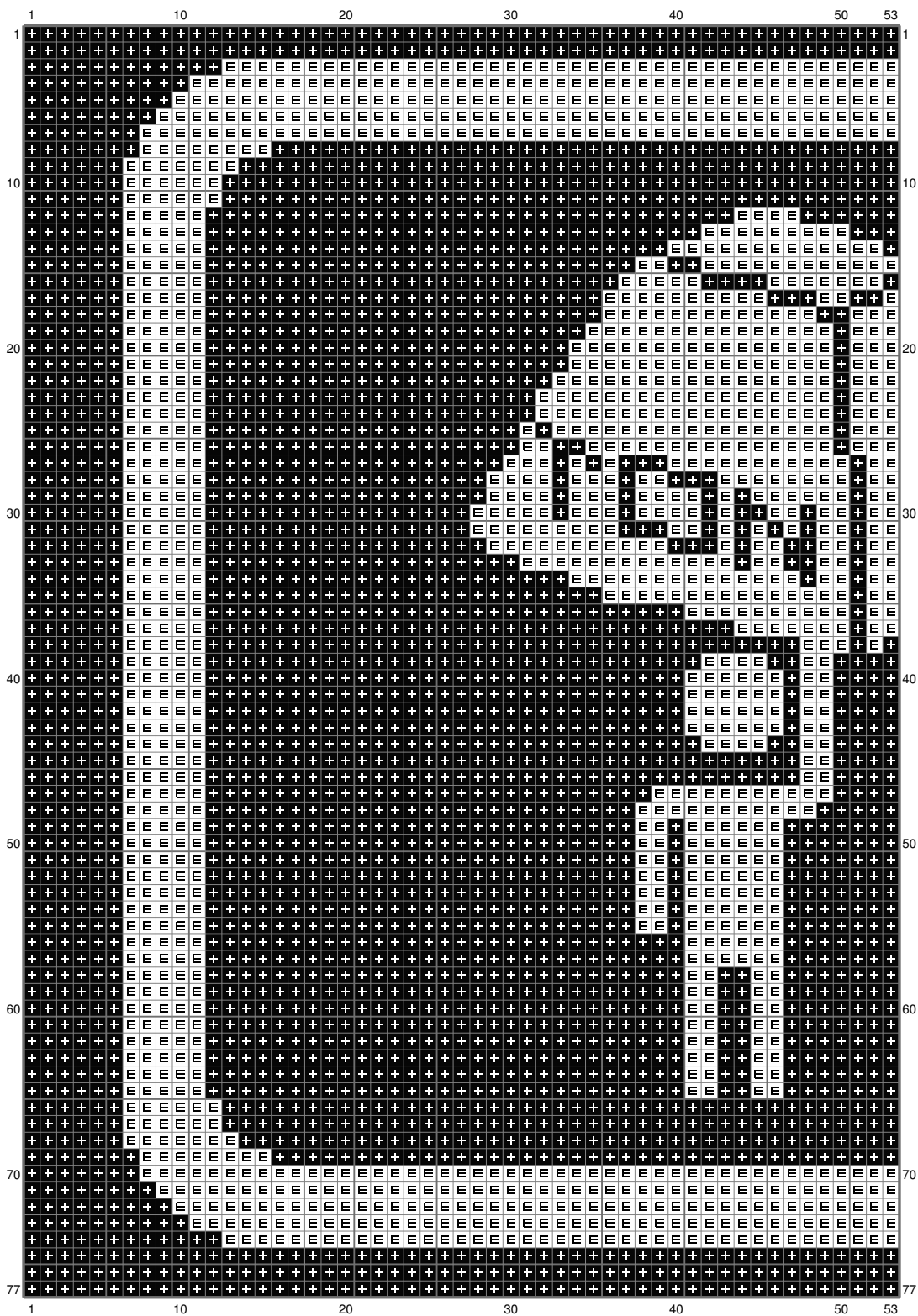
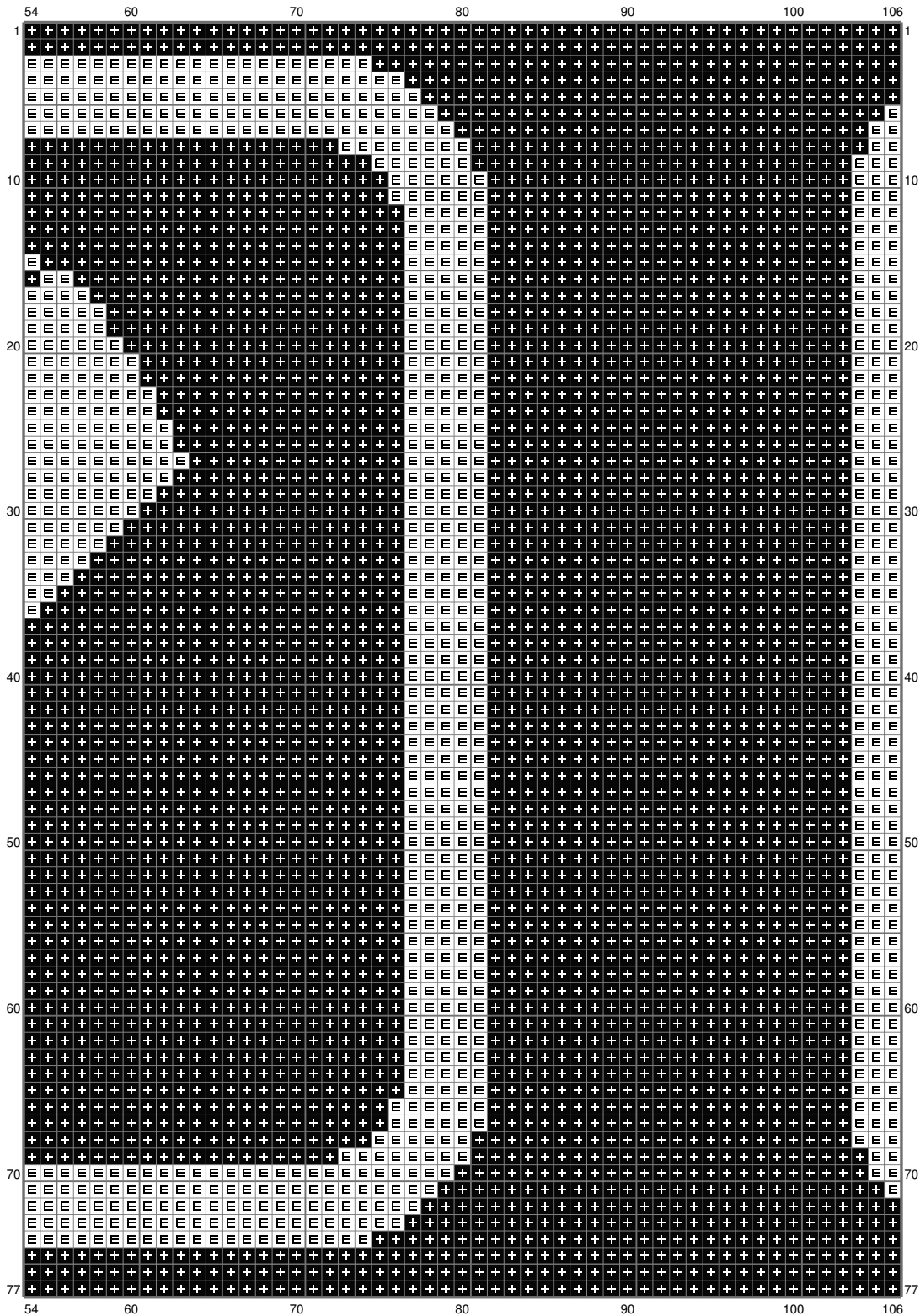


Untitled



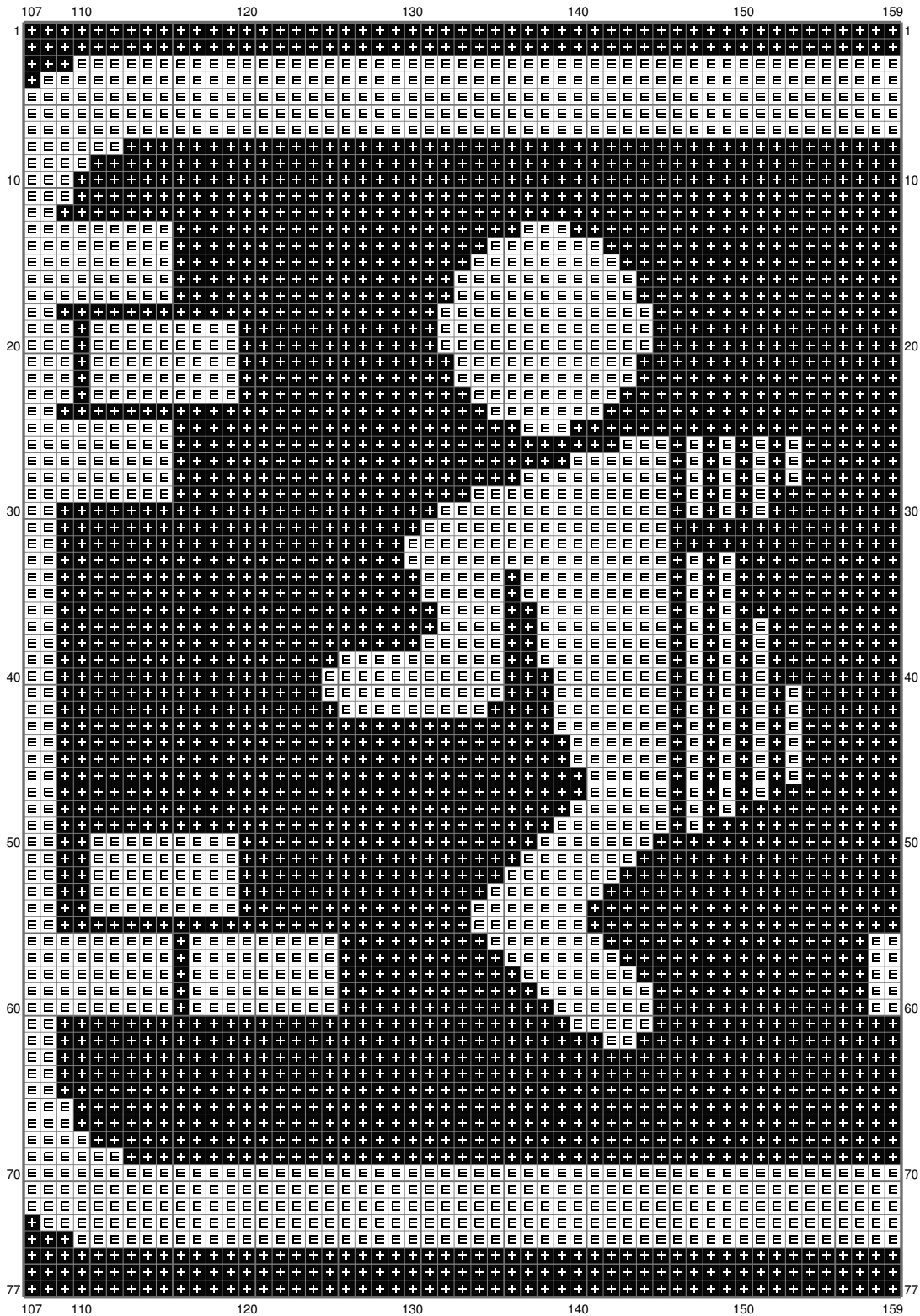
(This chart is printed using KG-Chart LE for Cross Stitch.)

Untitled



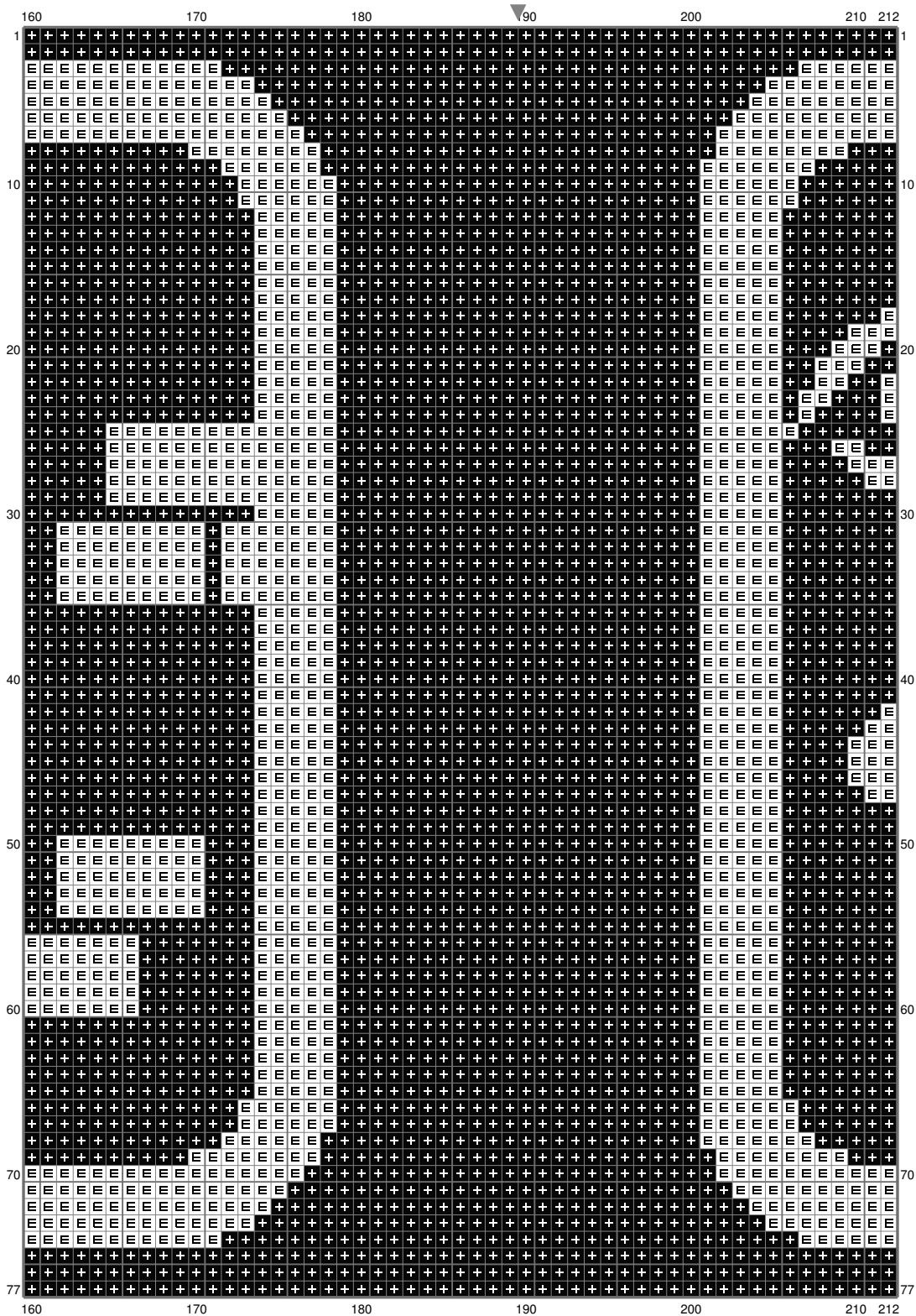
(This chart is printed using KG-Chart LE for Cross Stitch.)

Untitled



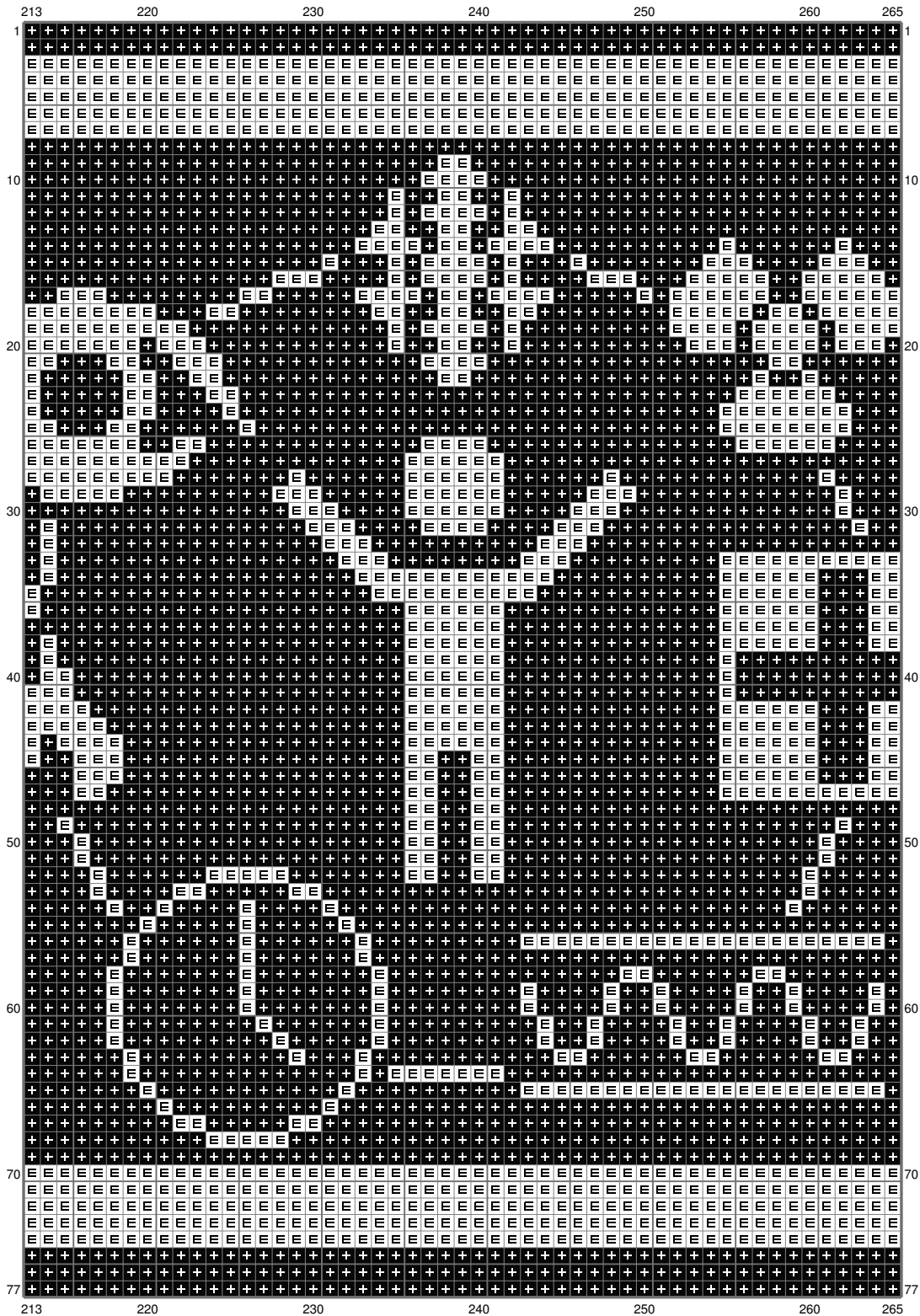
(This chart is printed using KG-Chart LE for Cross Stitch.)

Untitled



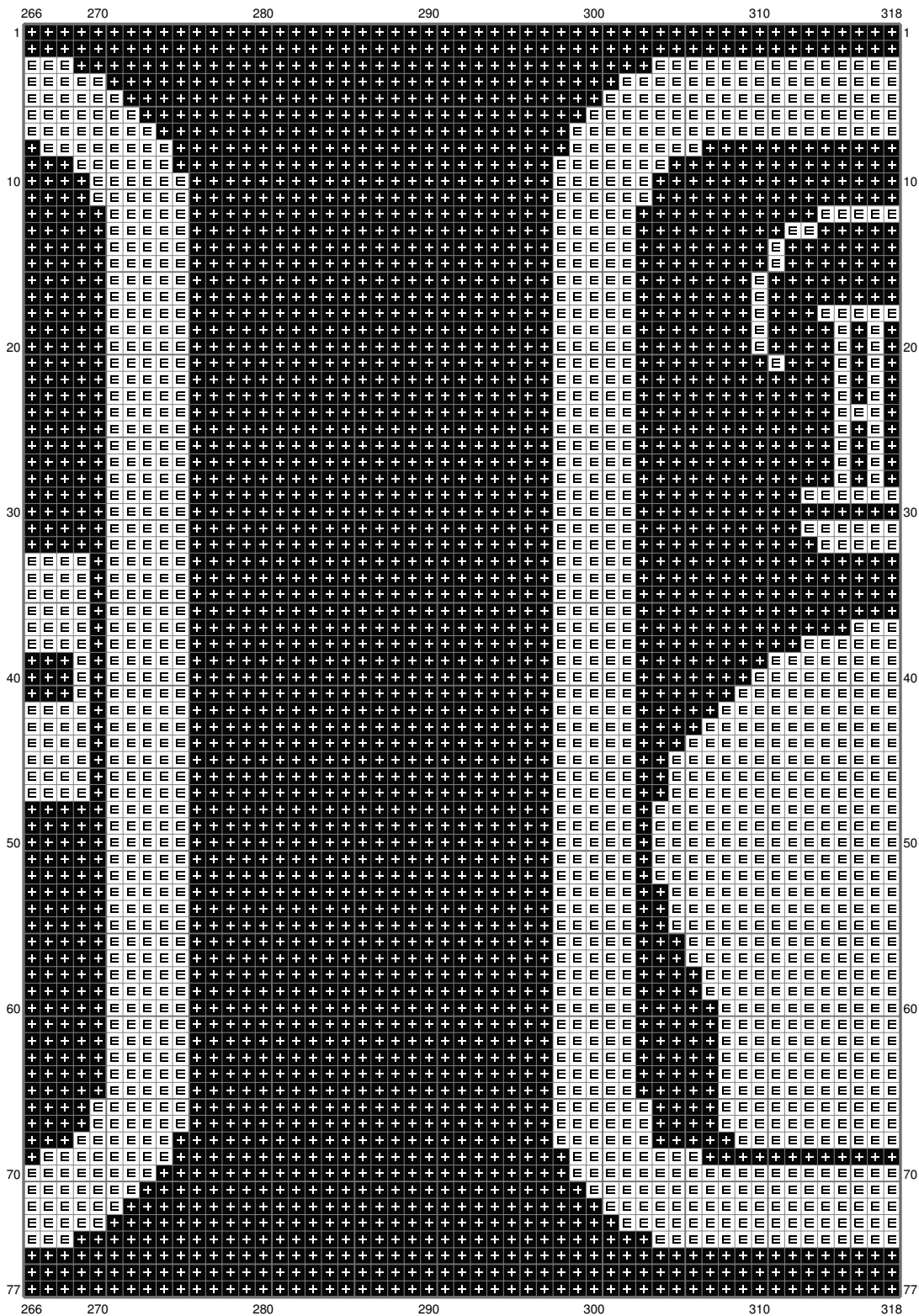
(This chart is printed using KG-Chart LE for Cross Stitch.)

Untitled



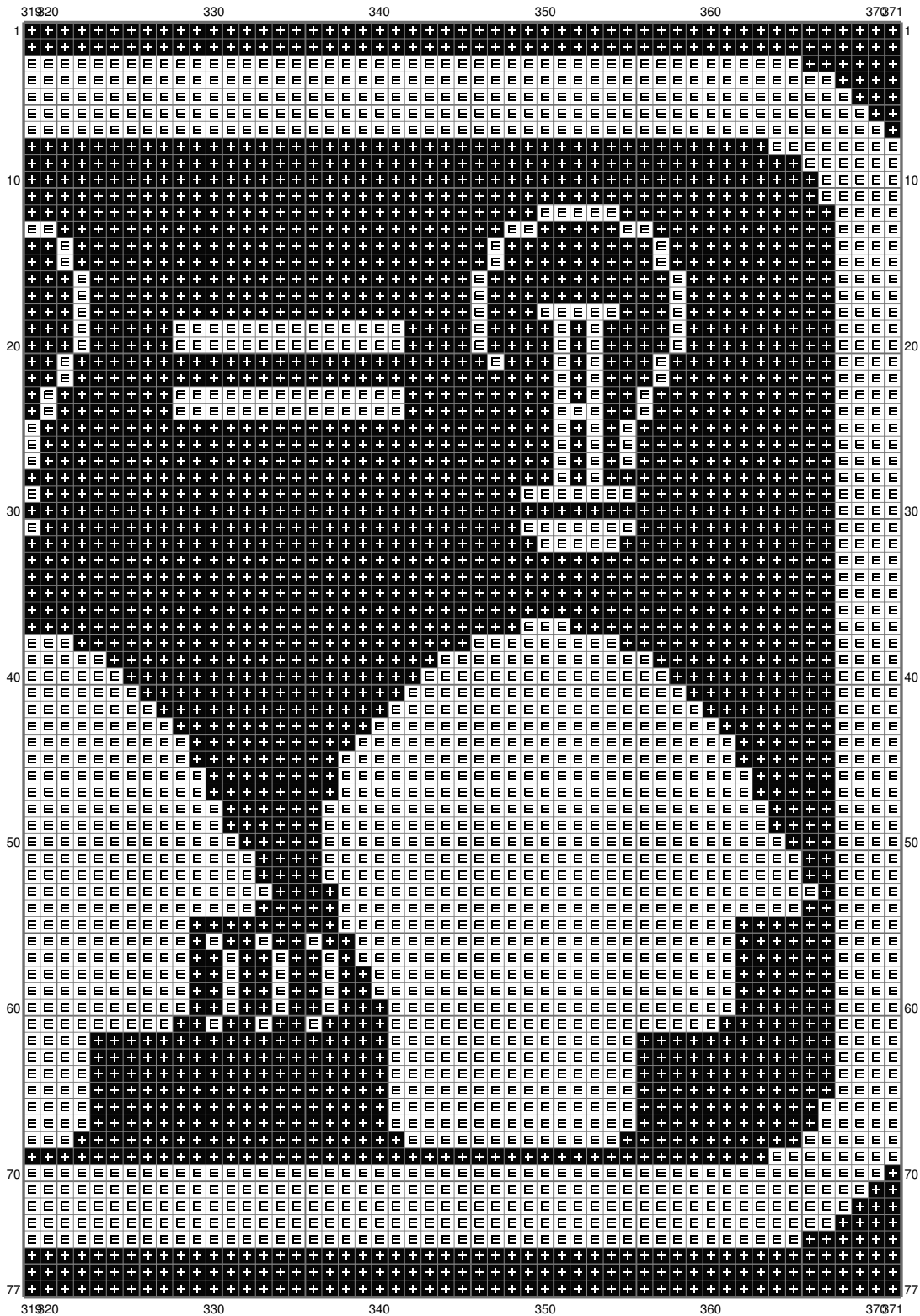
(This chart is printed using KG-Chart LE for Cross Stitch.)

Untitled

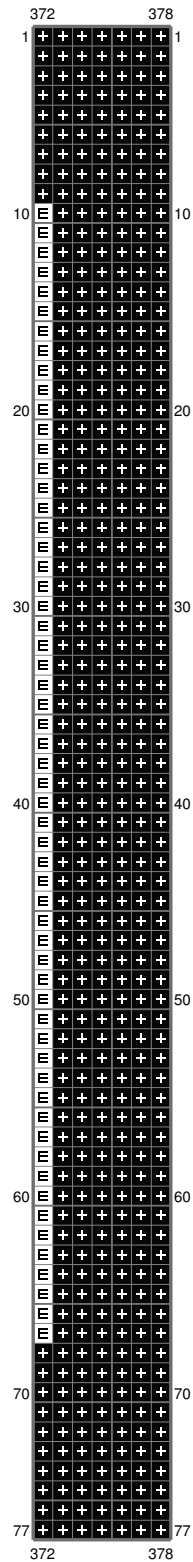


(This chart is printed using KG-Chart LE for Cross Stitch.)

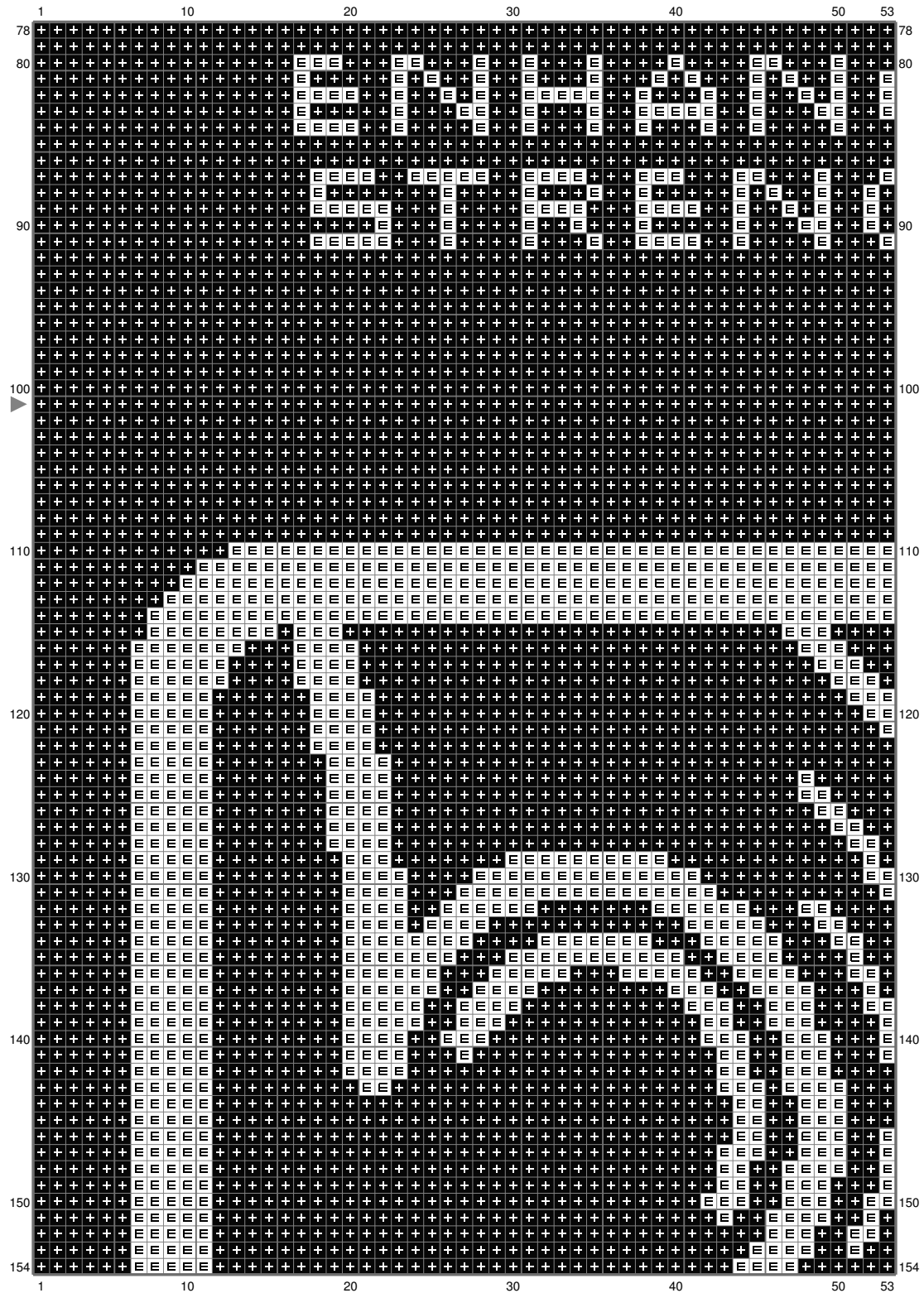
Untitled



Untitled

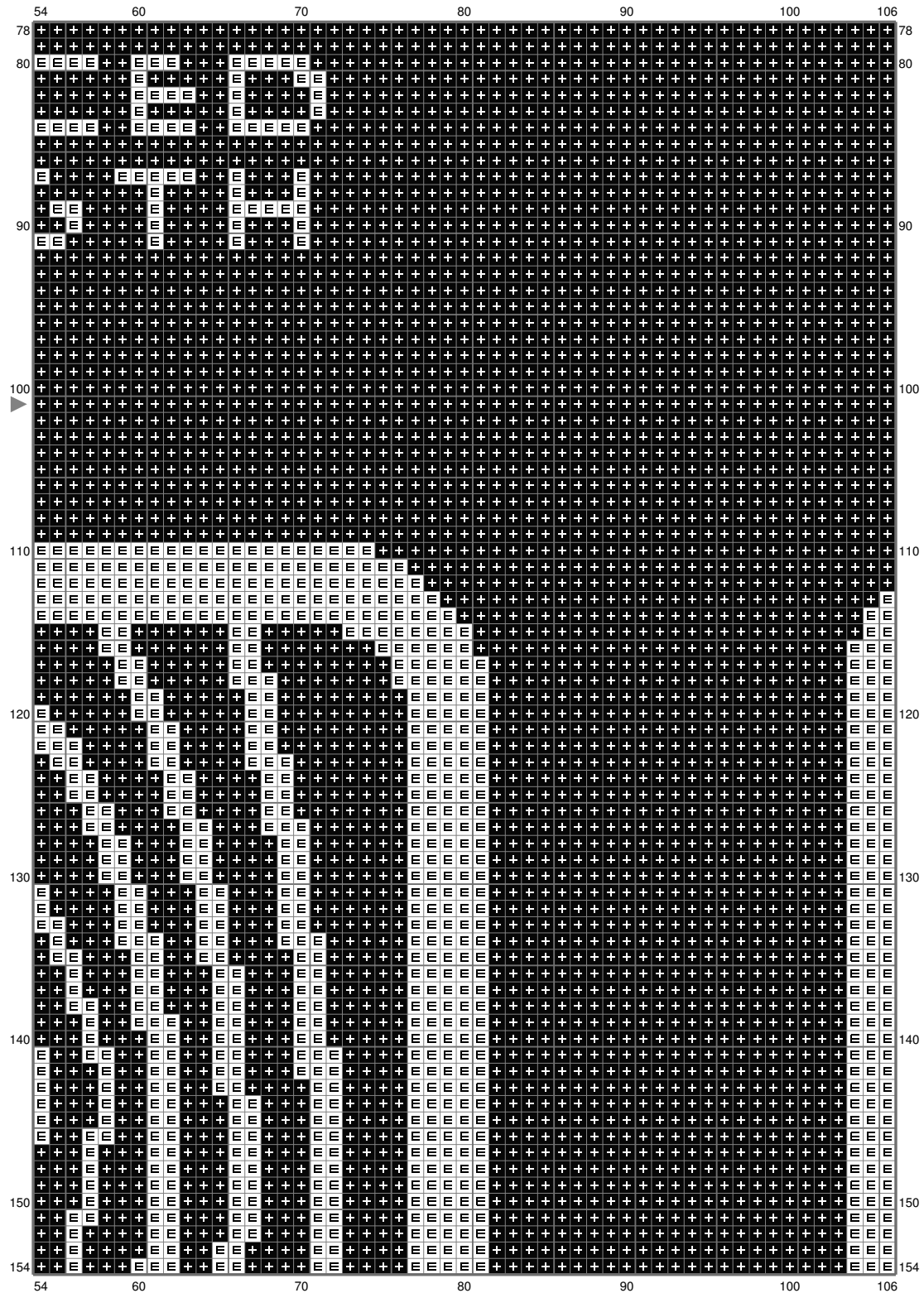


Untitled



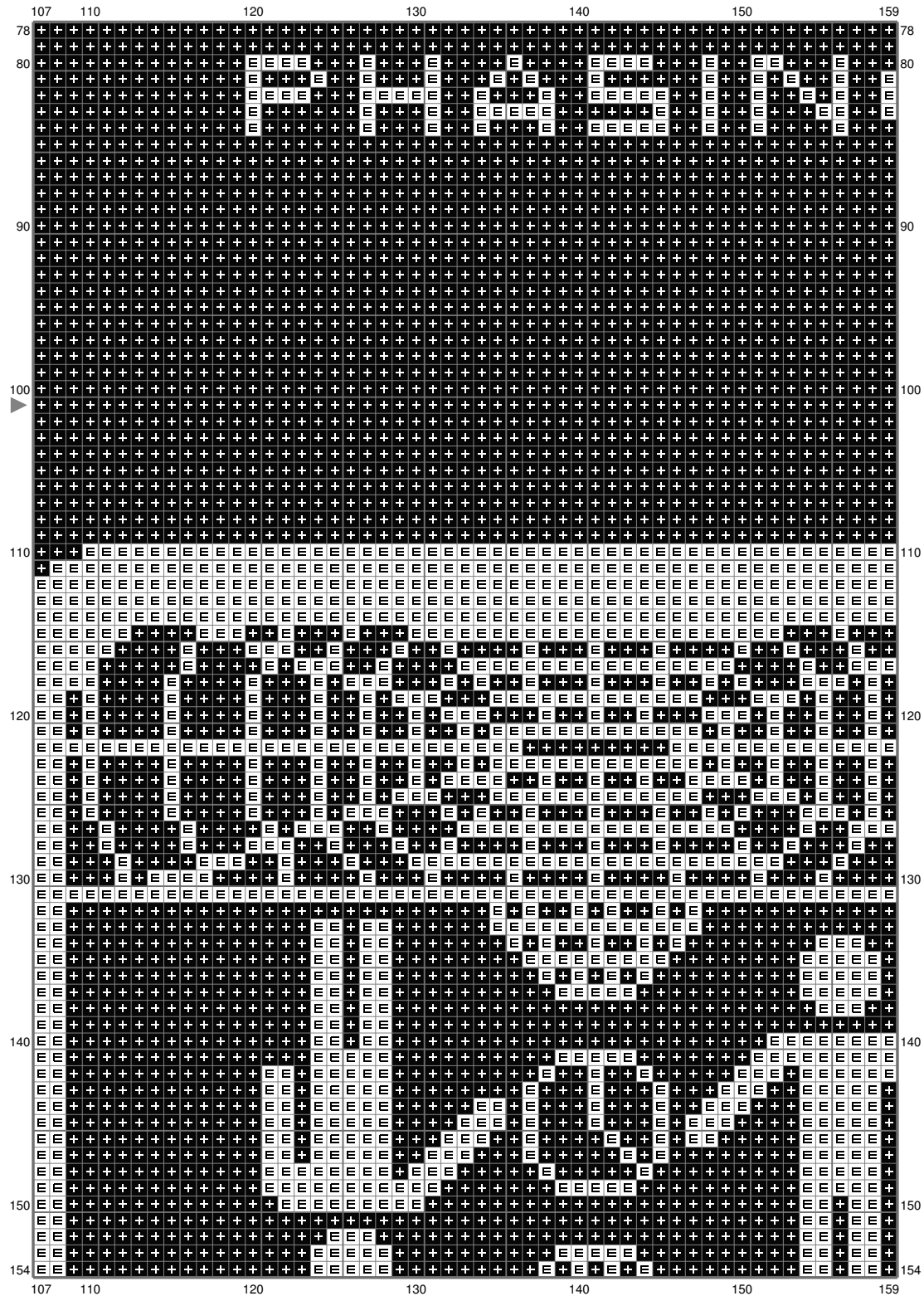
(This chart is printed using KG-Chart LE for Cross Stitch.)

Untitled



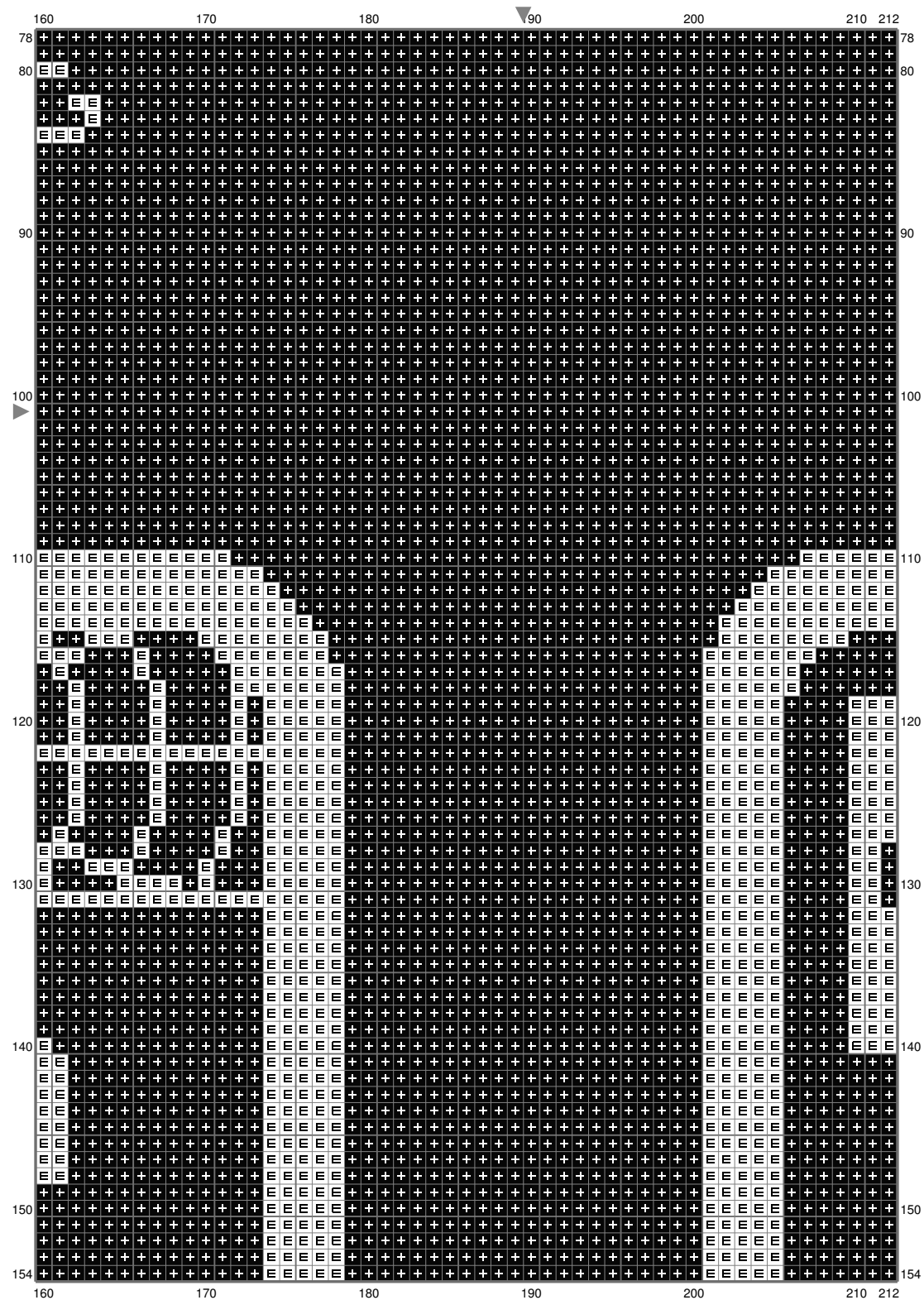
(This chart is printed using KG-Chart LE for Cross Stitch.)

Untitled

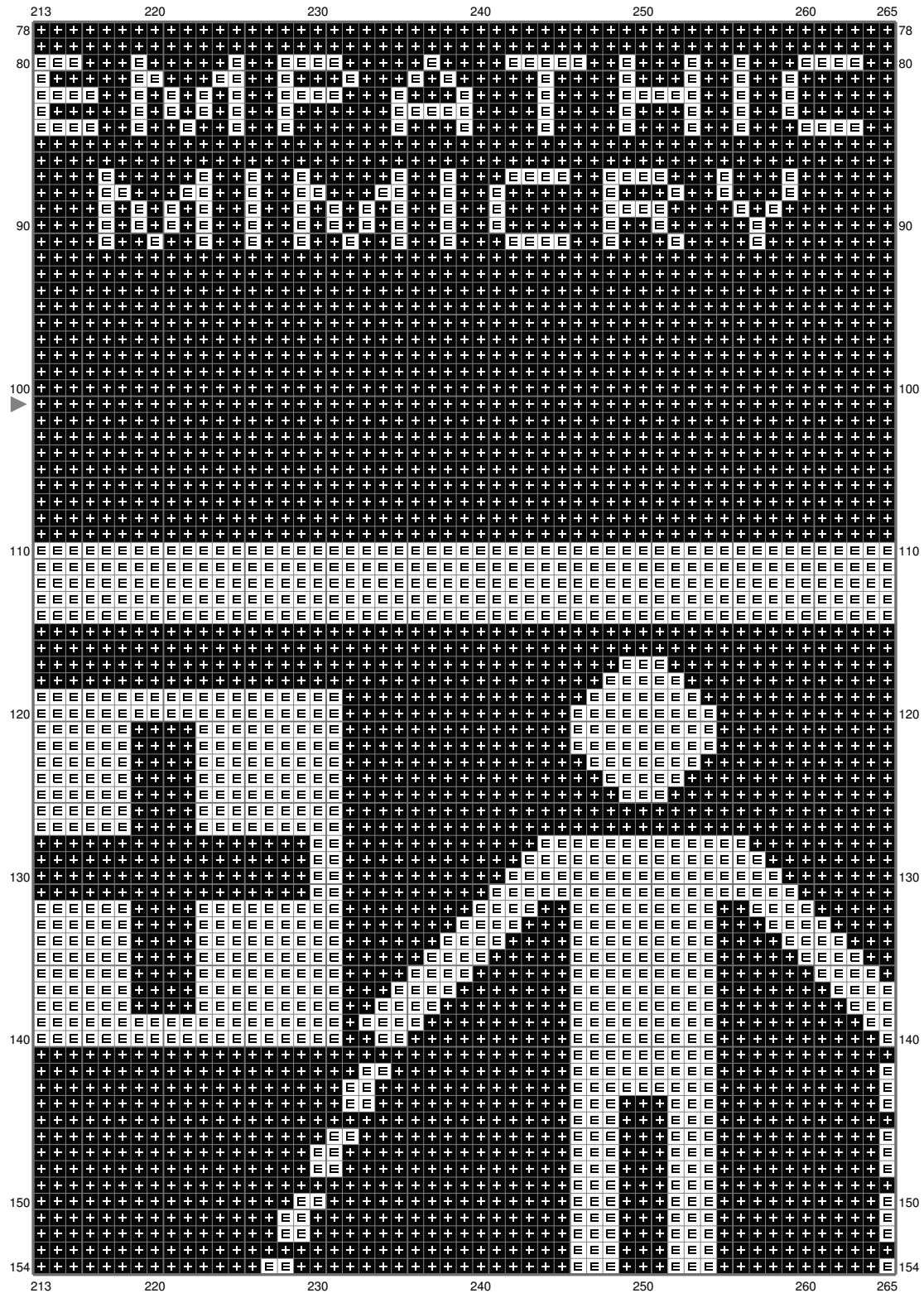


(This chart is printed using KG-Chart LE for Cross Stitch.)

Untitled

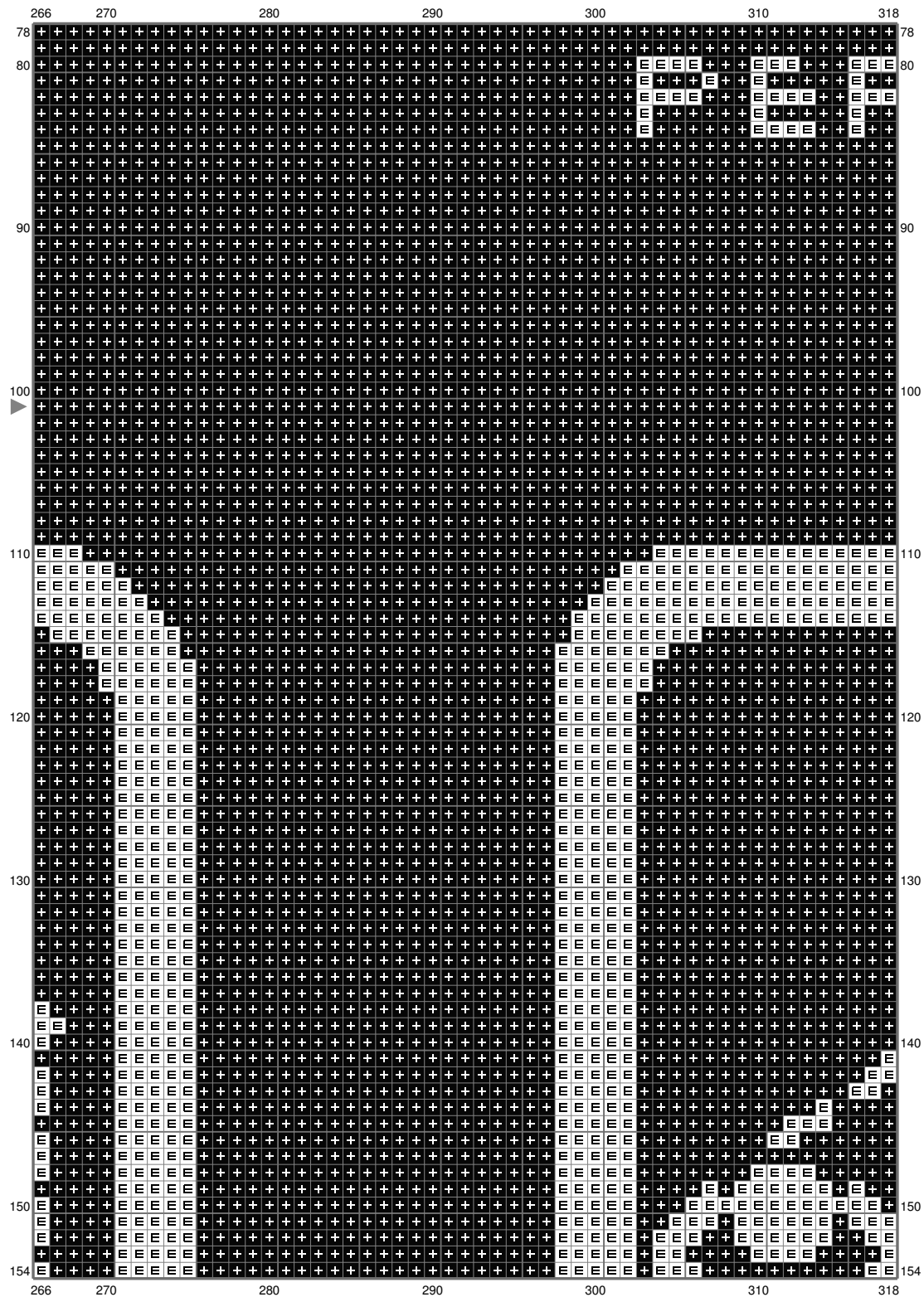


Untitled



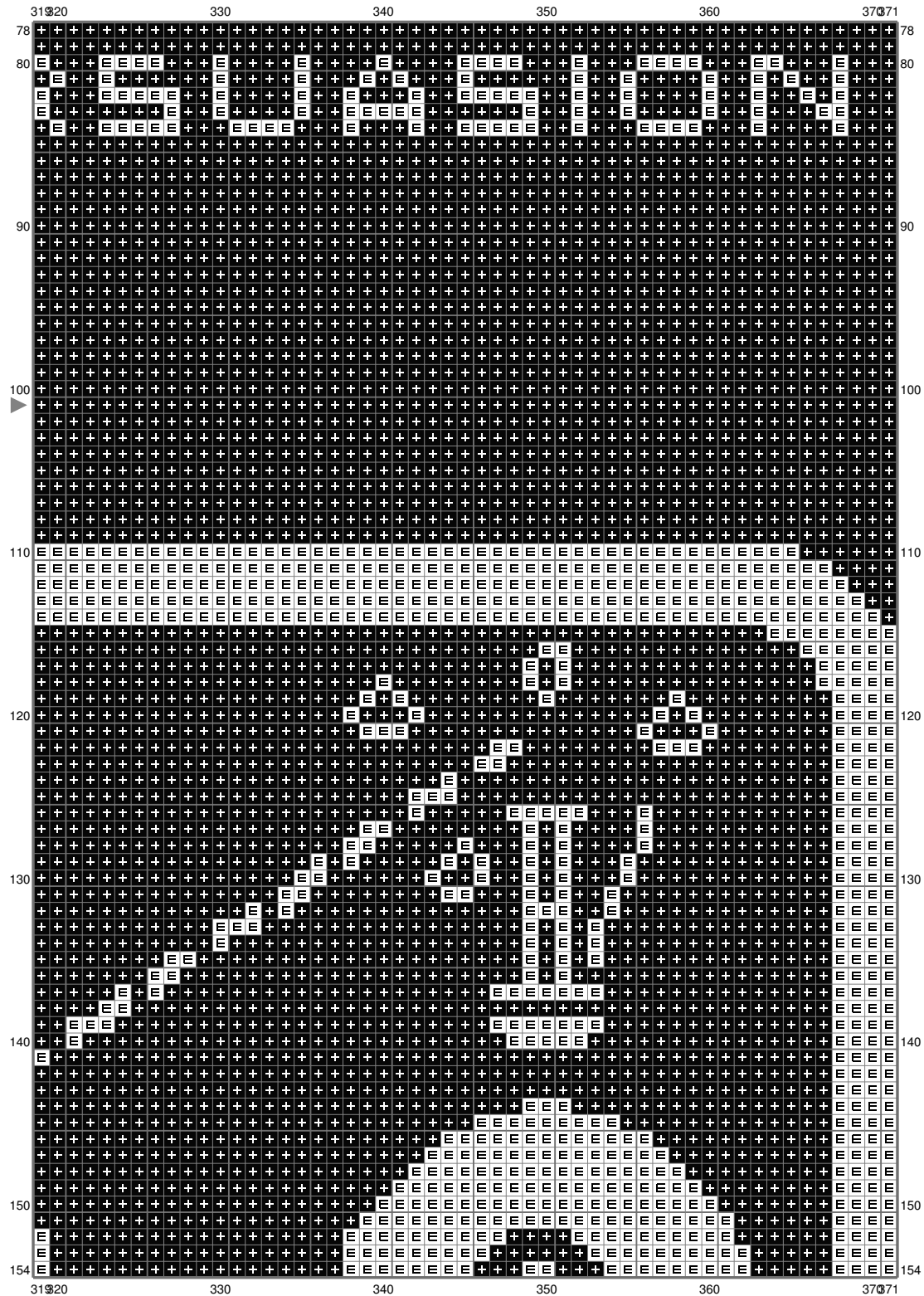
(This chart is printed using KG-Chart LE for Cross Stitch.)

Untitled



(This chart is printed using KG-Chart LE for Cross Stitch.)

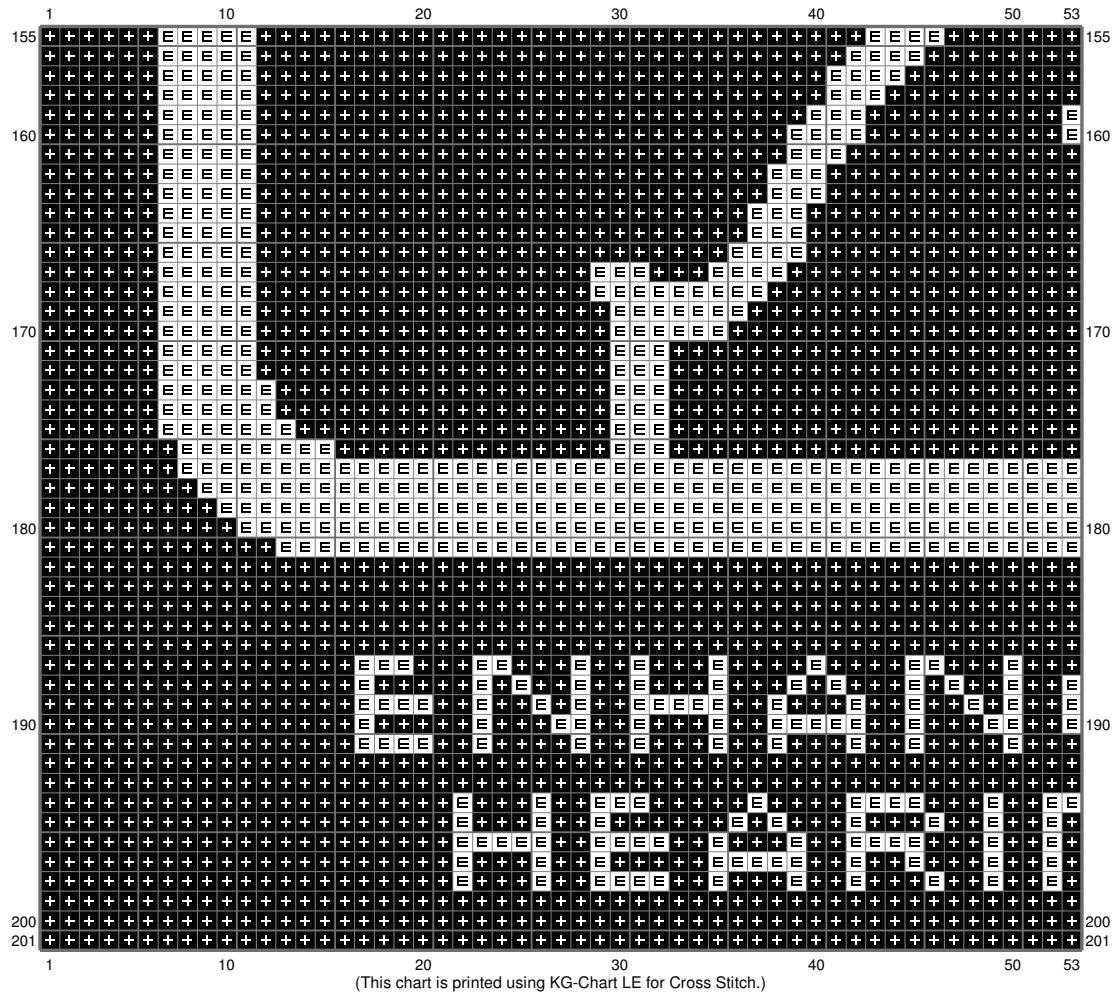
Untitled



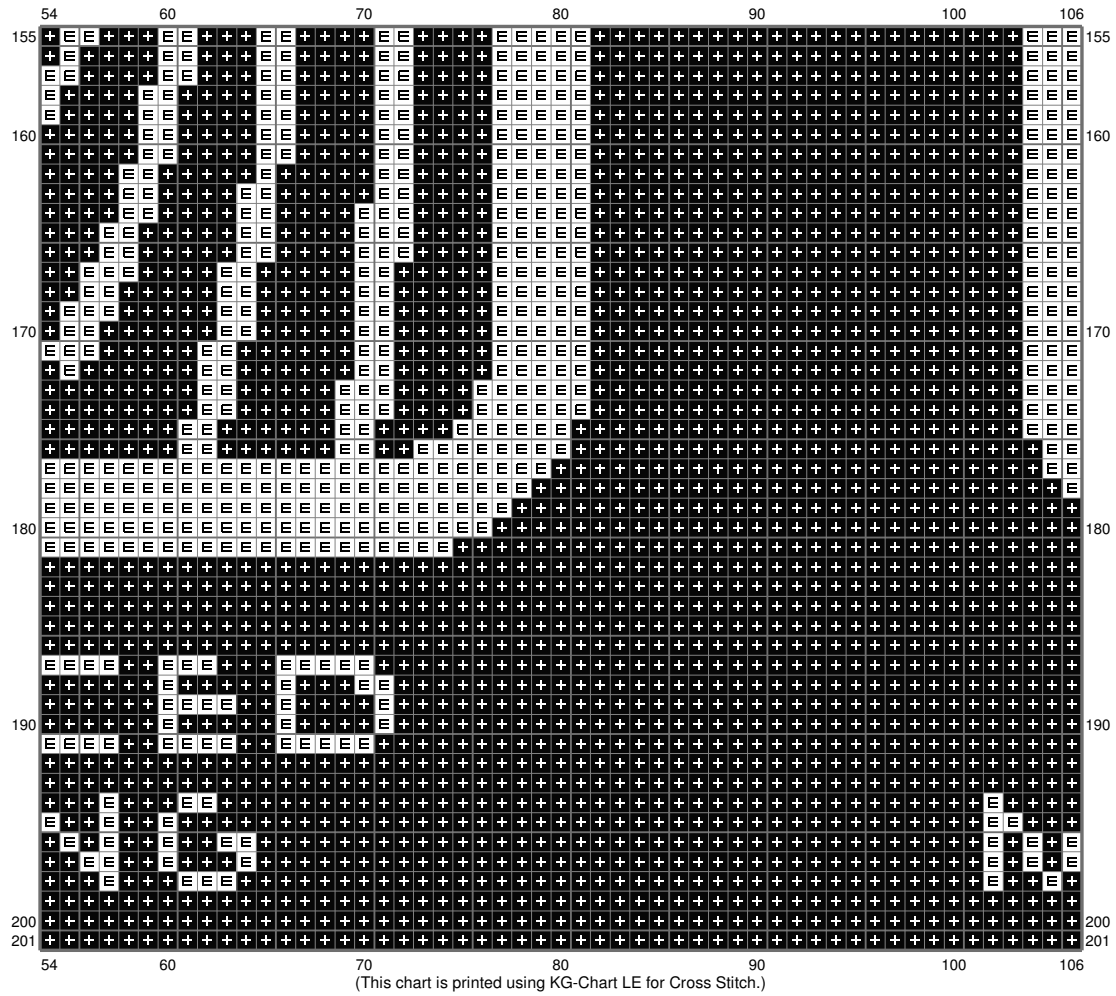
(This chart is printed using KG-Chart LE for Cross Stitch.)

16 / 24

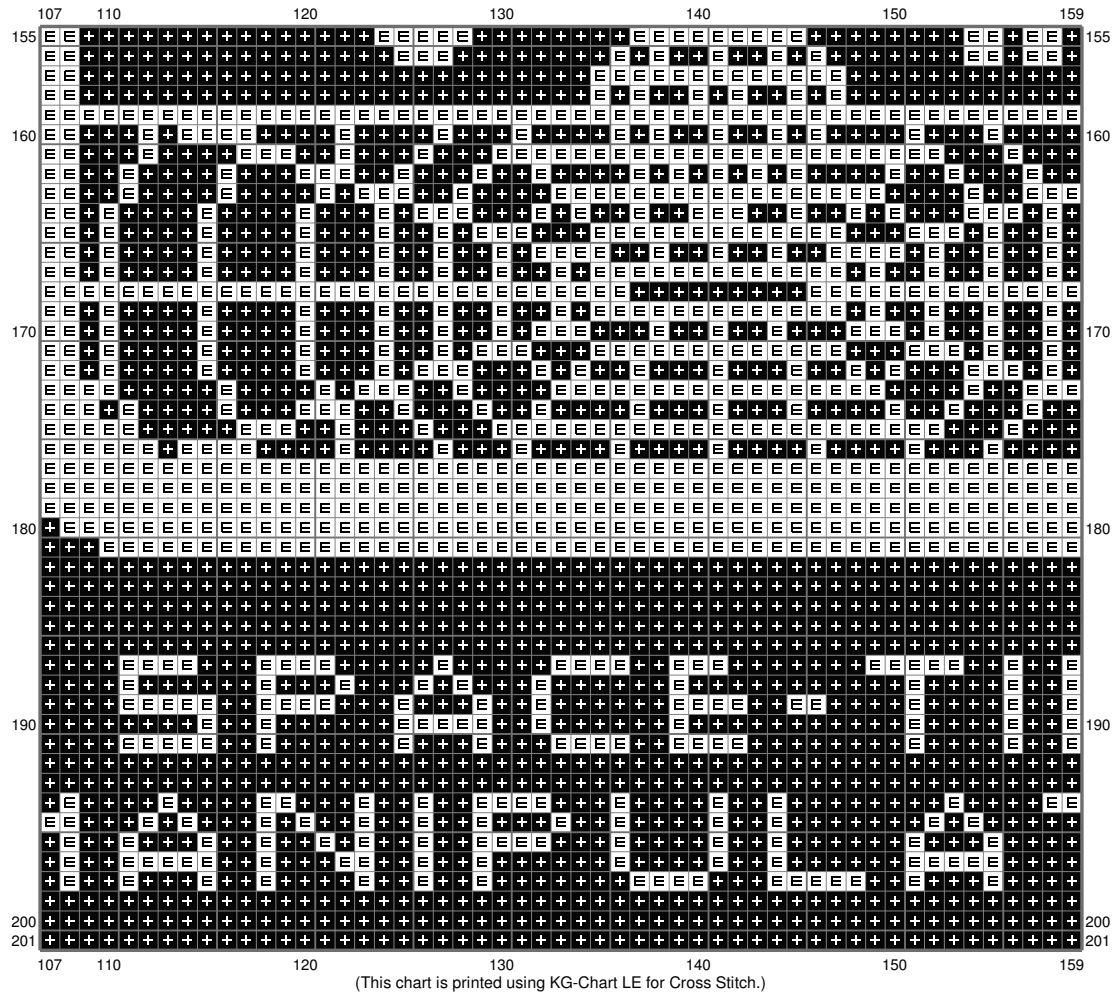
Untitled



Untitled



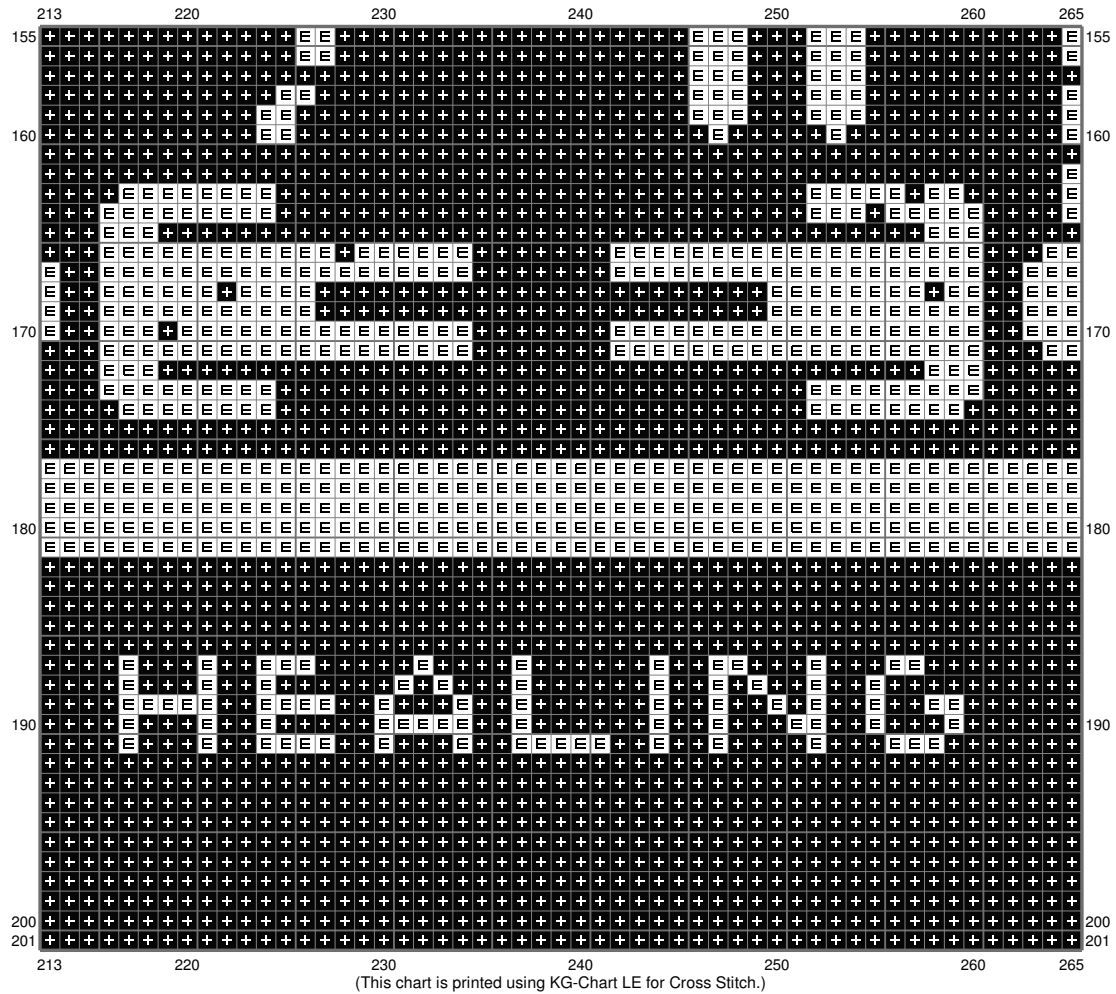
Untitled



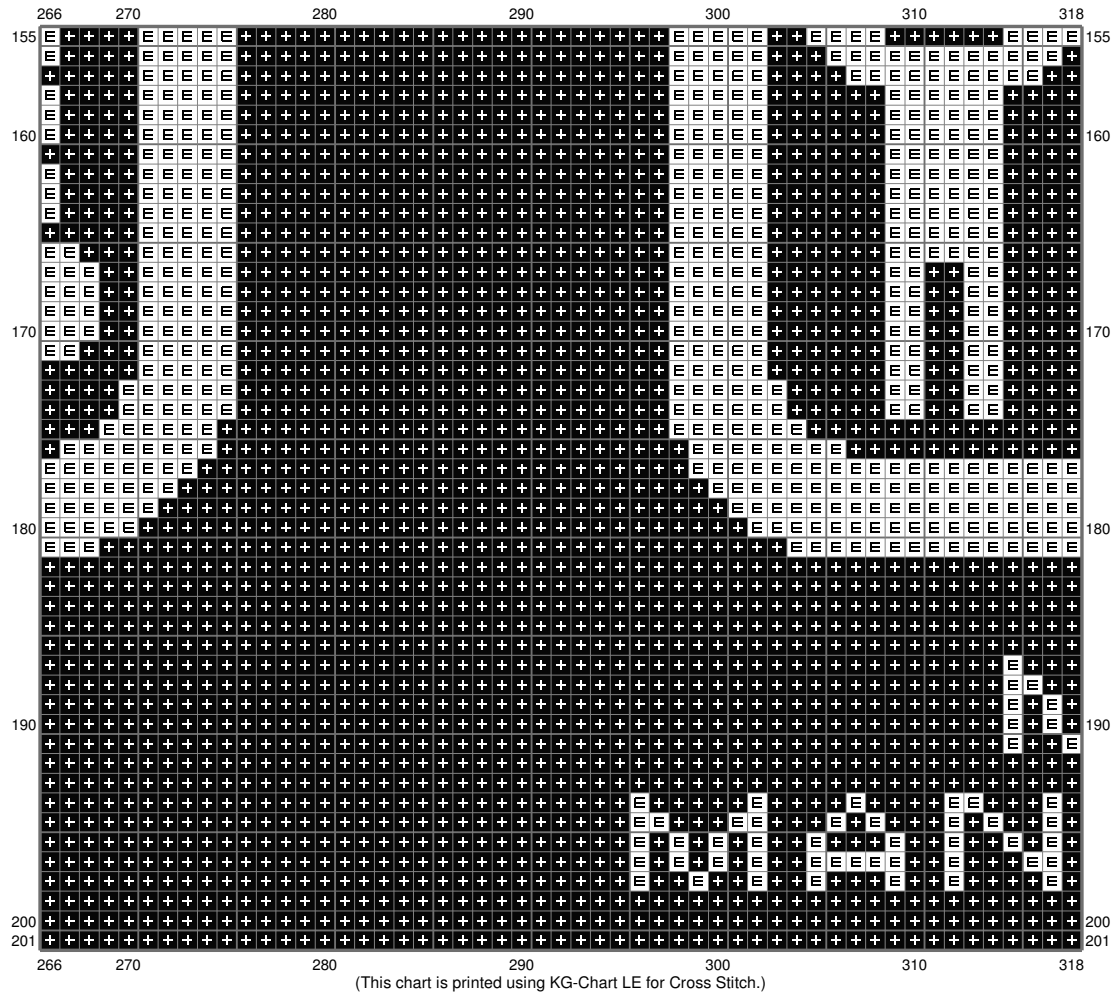
Untitled



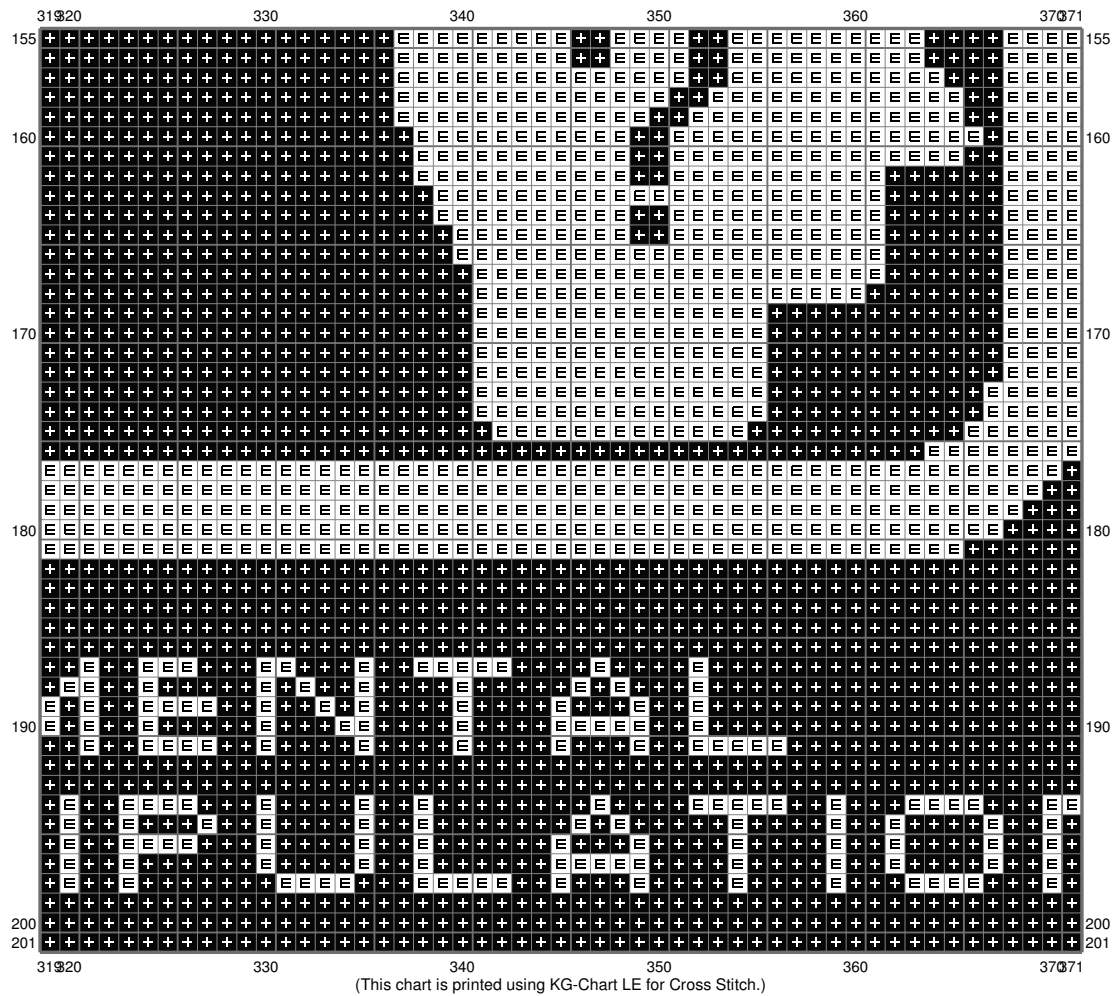
Untitled



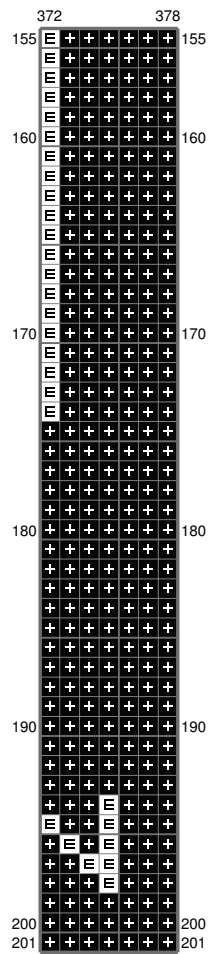
Untitled



Untitled



Untitled



(This chart is printed using KG-Chart LE for Cross Stitch.)

Stitch Count: 378w x 201h

Finished Size: 68.58 cm x 36.46 cm (28 ct./inch)

Cloth: Aida

Cloth's Color: White

of colors: 2 Colors

Color Table (DMC)

Cross Stitch

 310 (55639 ct)

 B5200 (20339 ct)