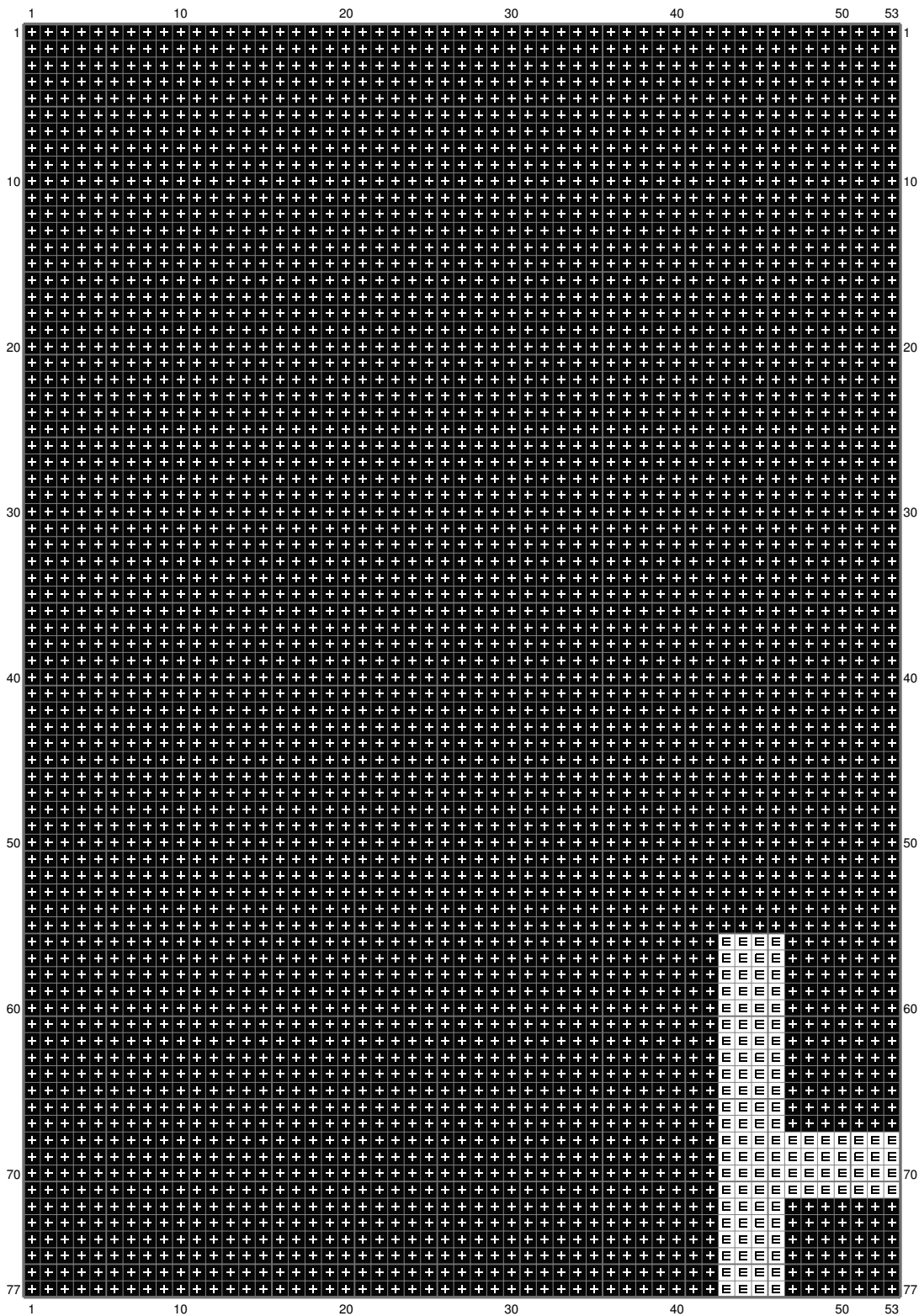
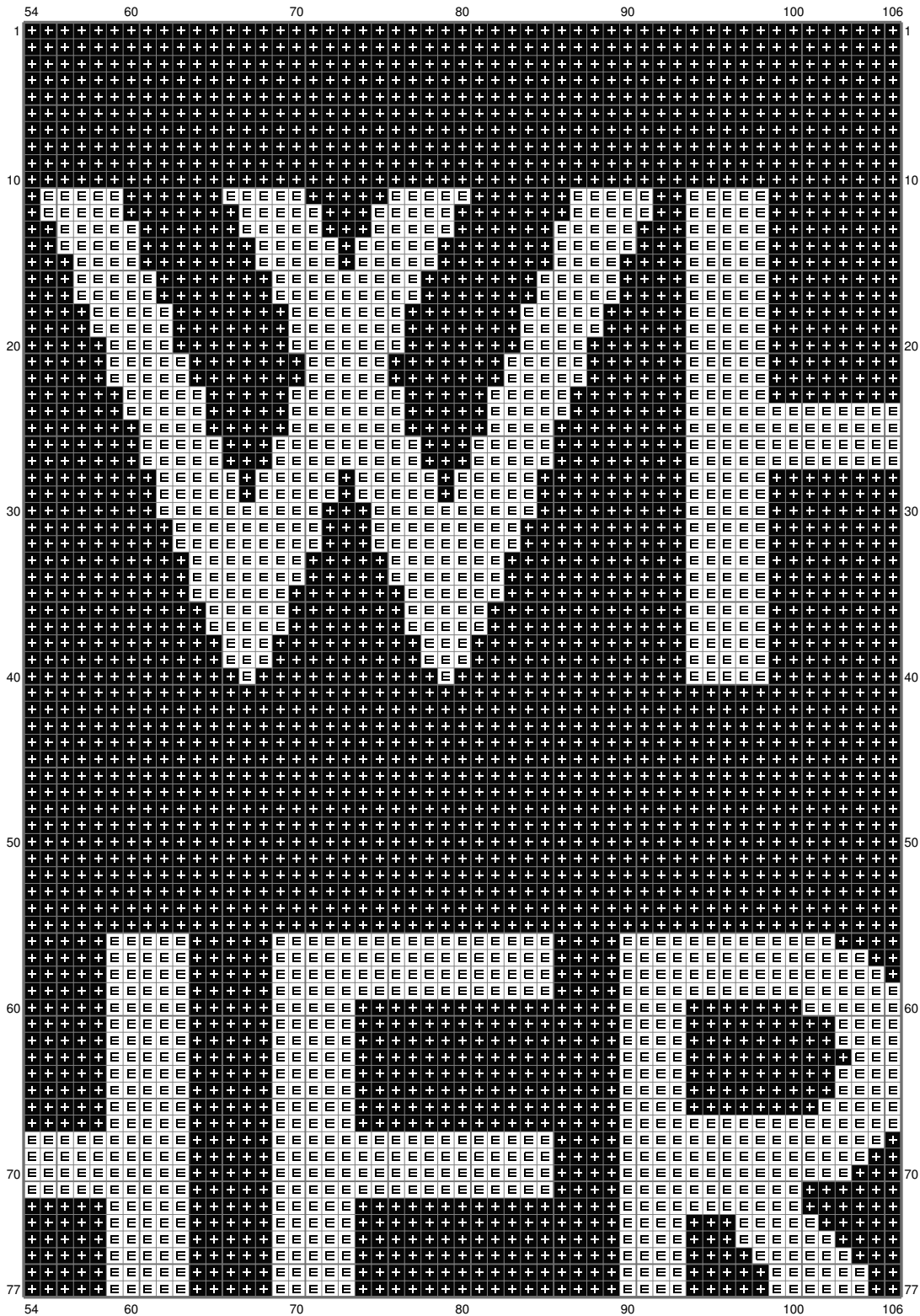


# Untitled



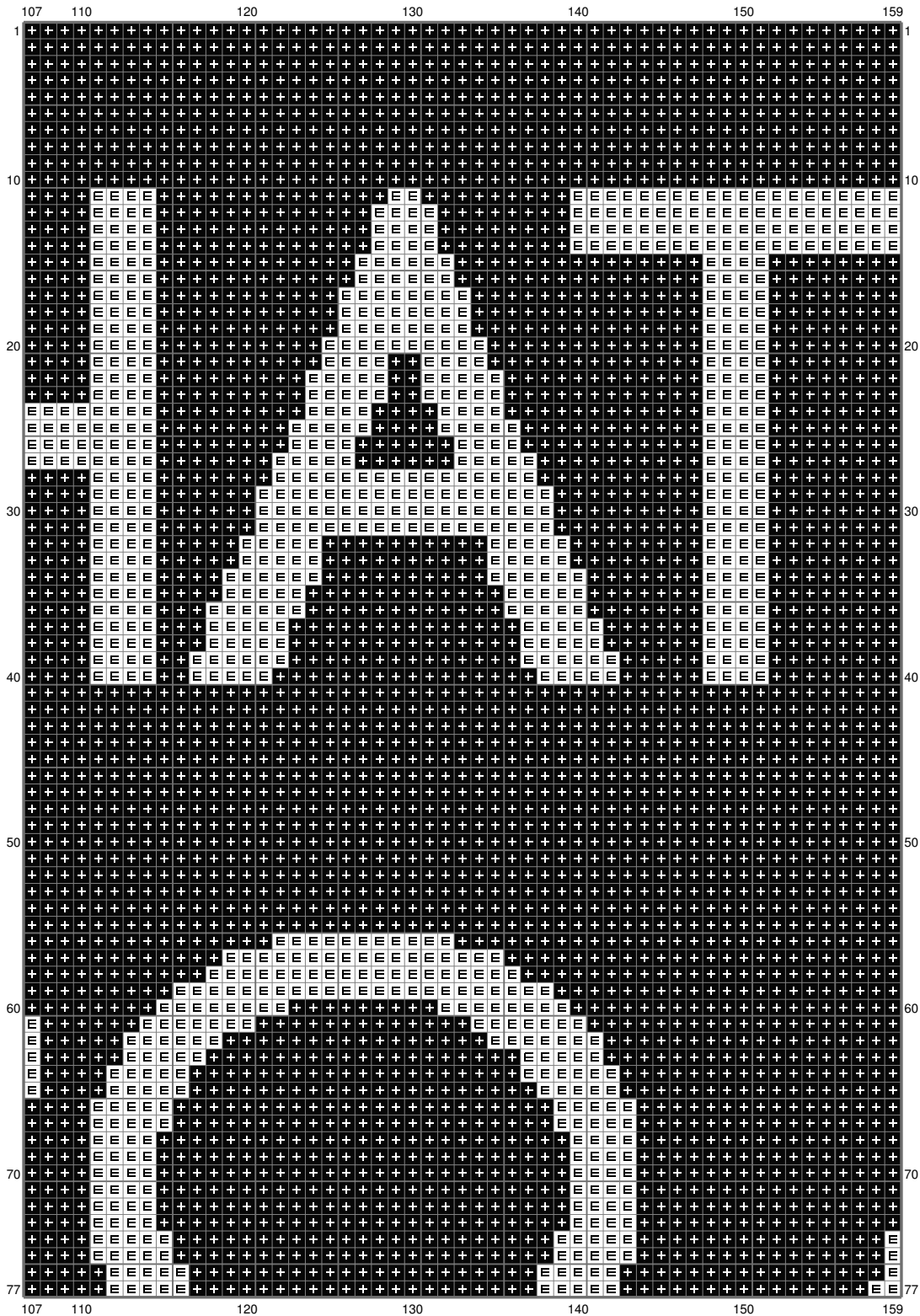
(This chart is printed using KG-Chart LE for Cross Stitch.)

# Untitled



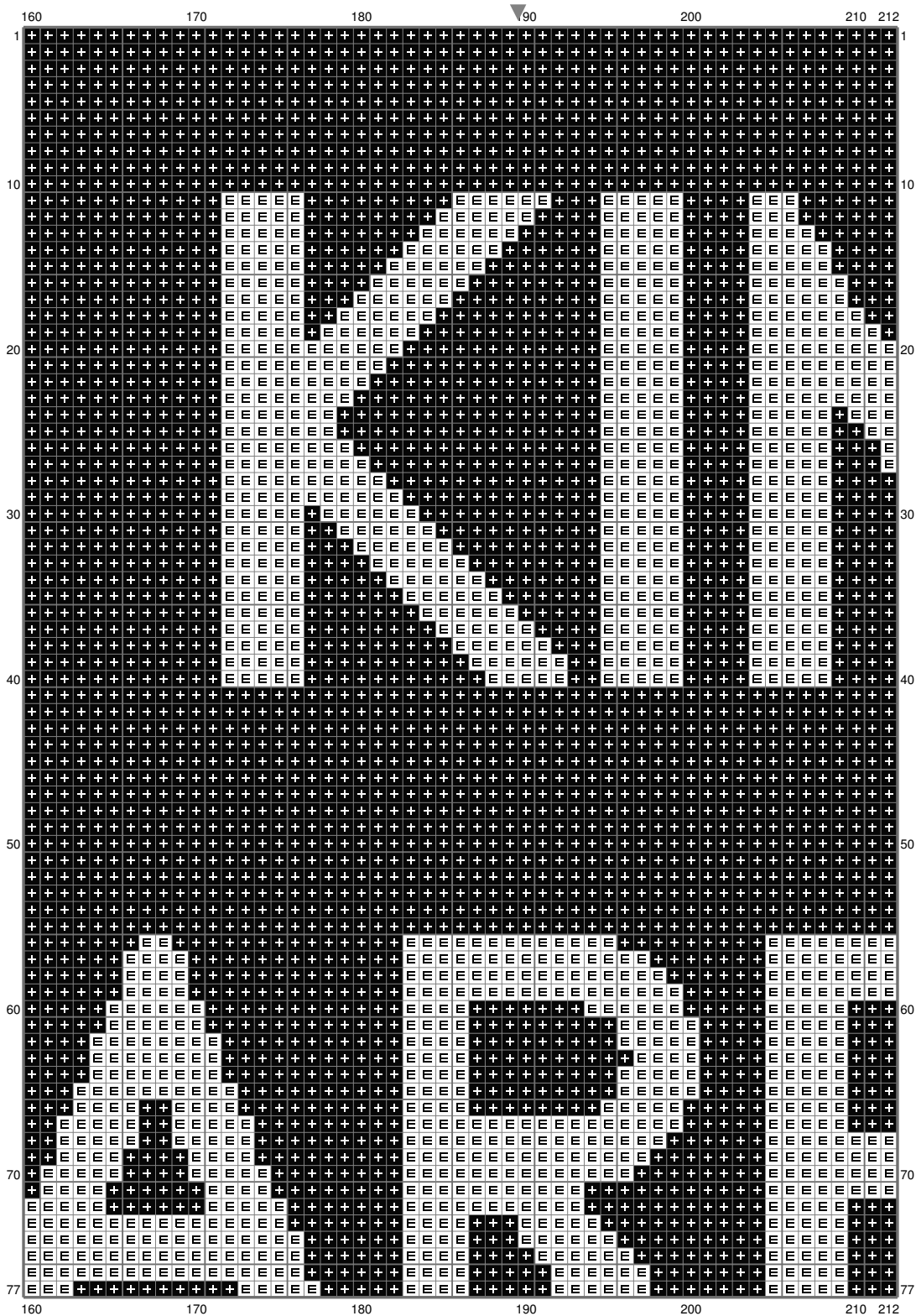
(This chart is printed using KG-Chart LE for Cross Stitch.)

# Untitled



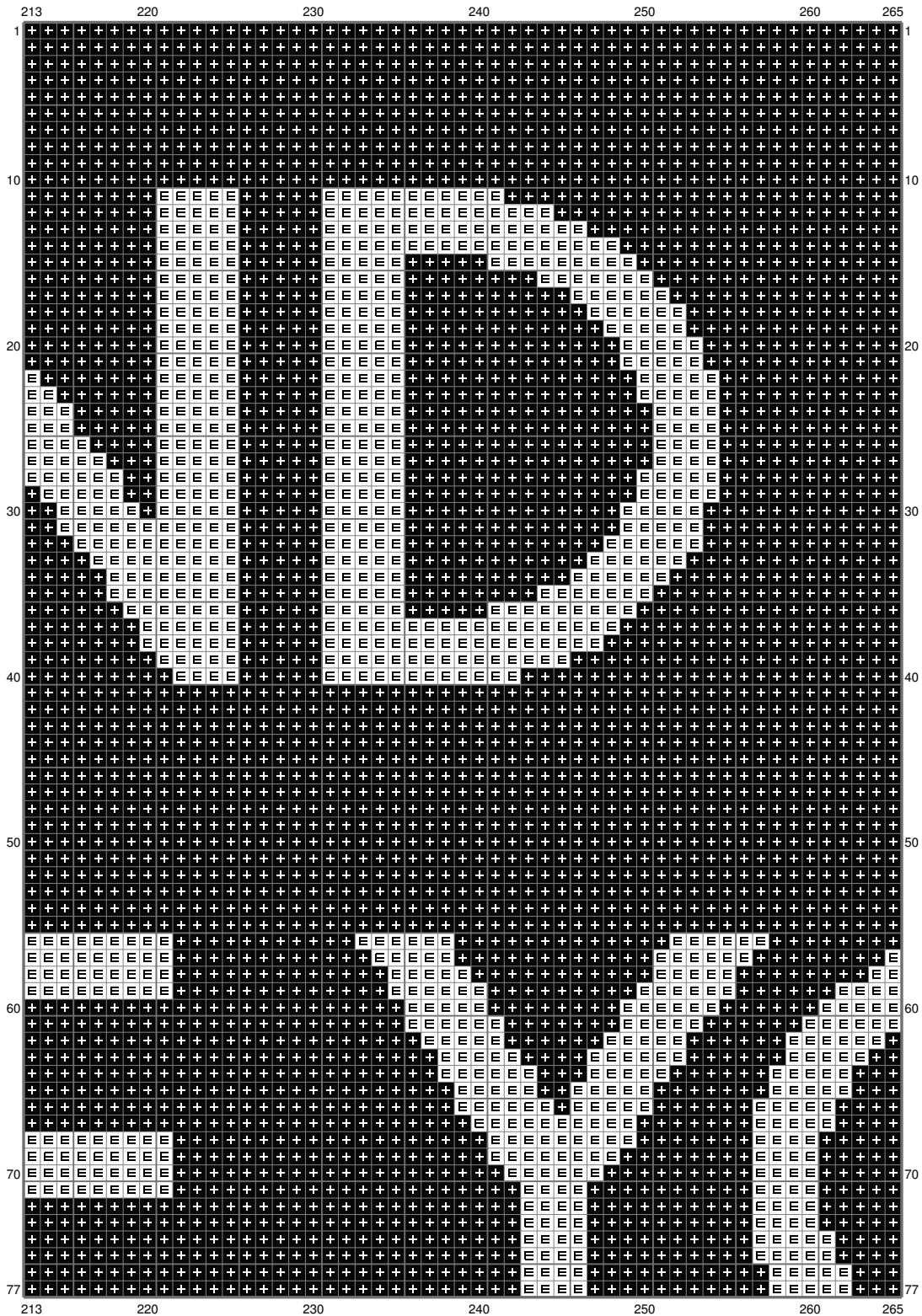
(This chart is printed using KG-Chart LE for Cross Stitch.)

# Untitled



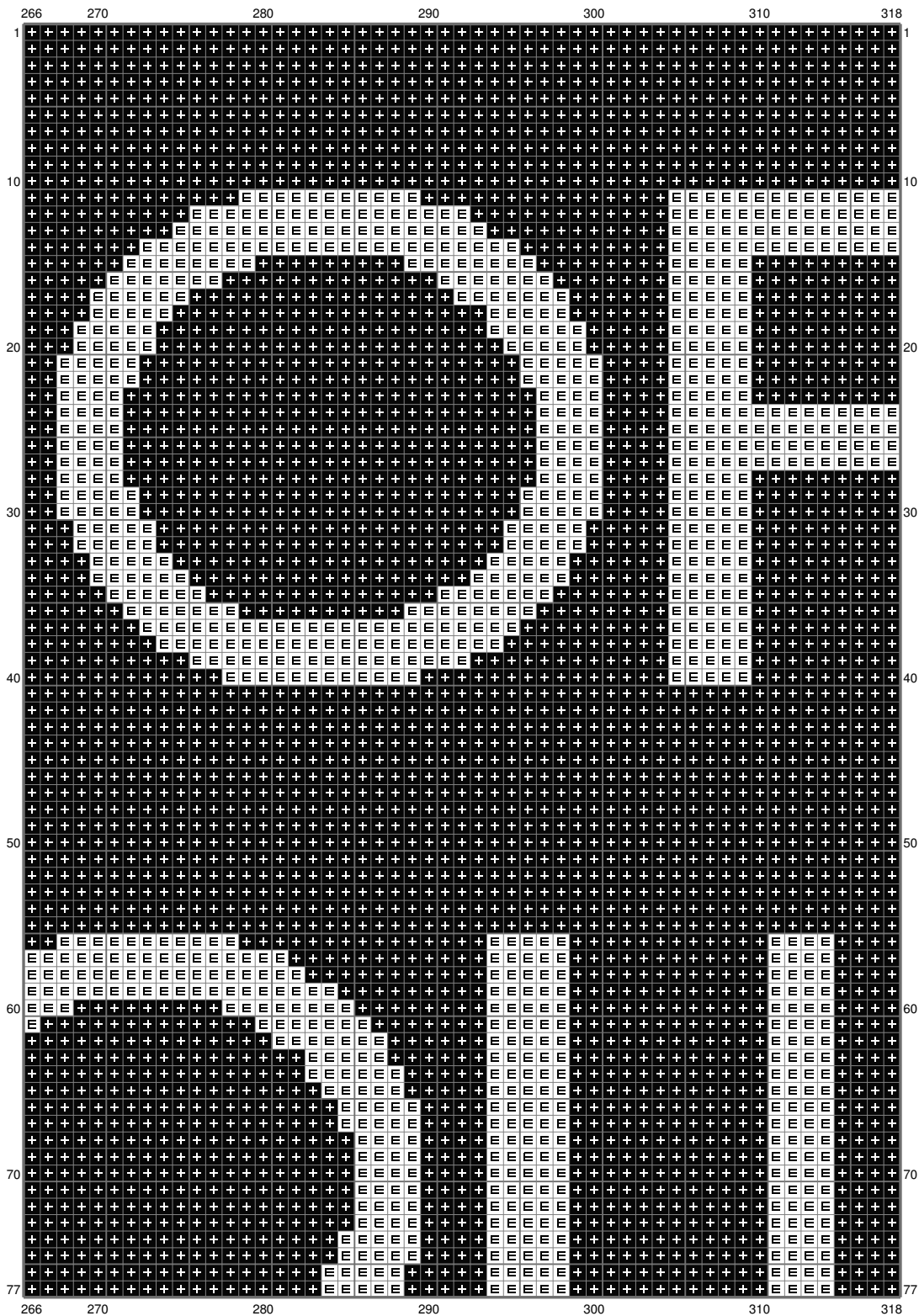
(This chart is printed using KG-Chart LE for Cross Stitch.)

# Untitled



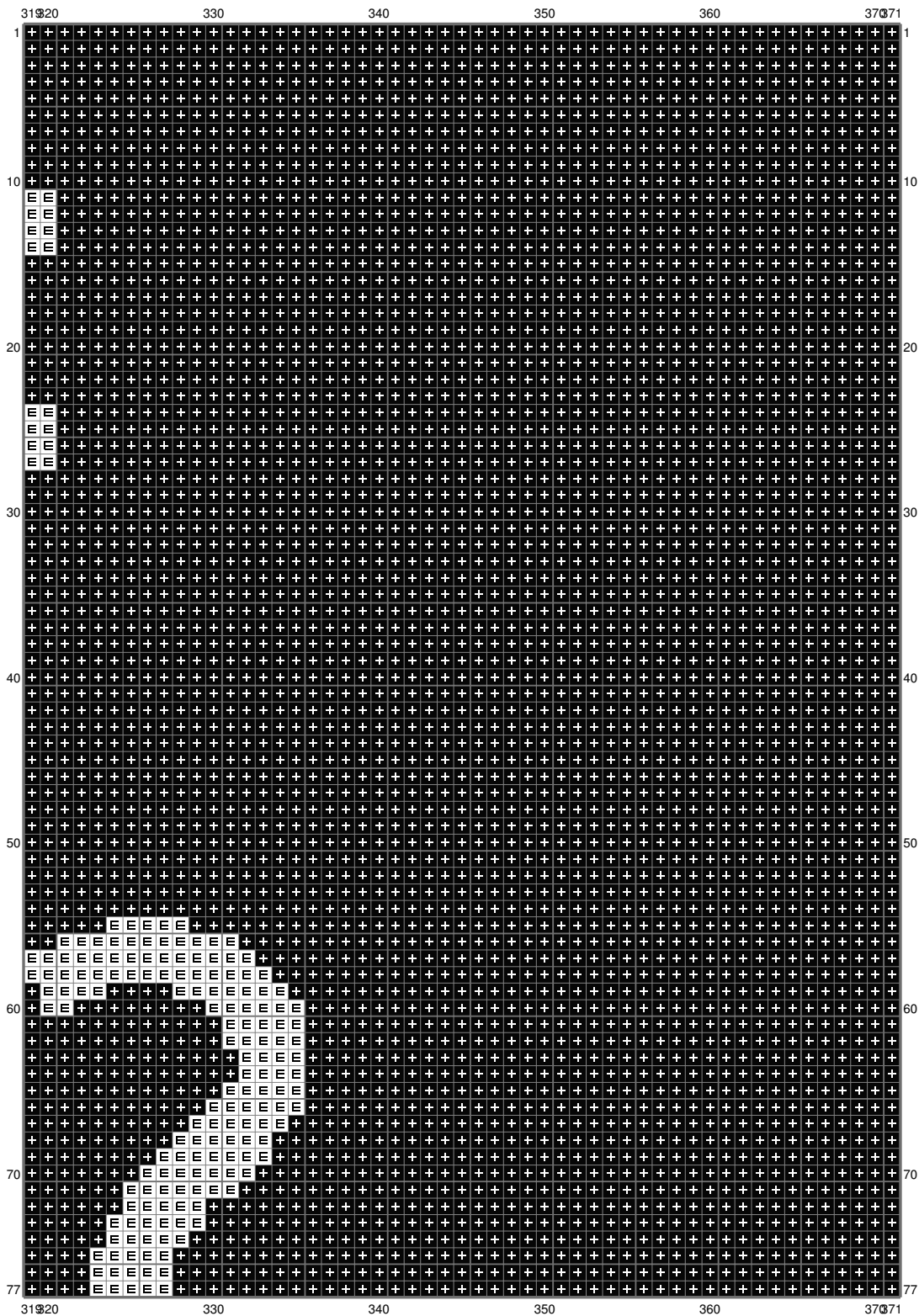
(This chart is printed using KG-Chart LE for Cross Stitch.)

# Untitled



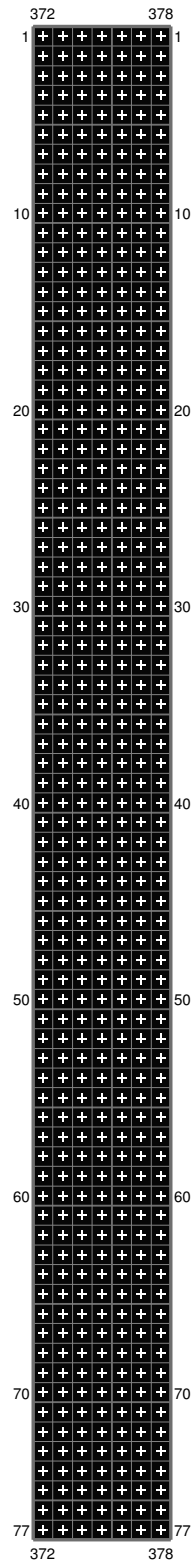
(This chart is printed using KG-Chart LE for Cross Stitch.)

# Untitled



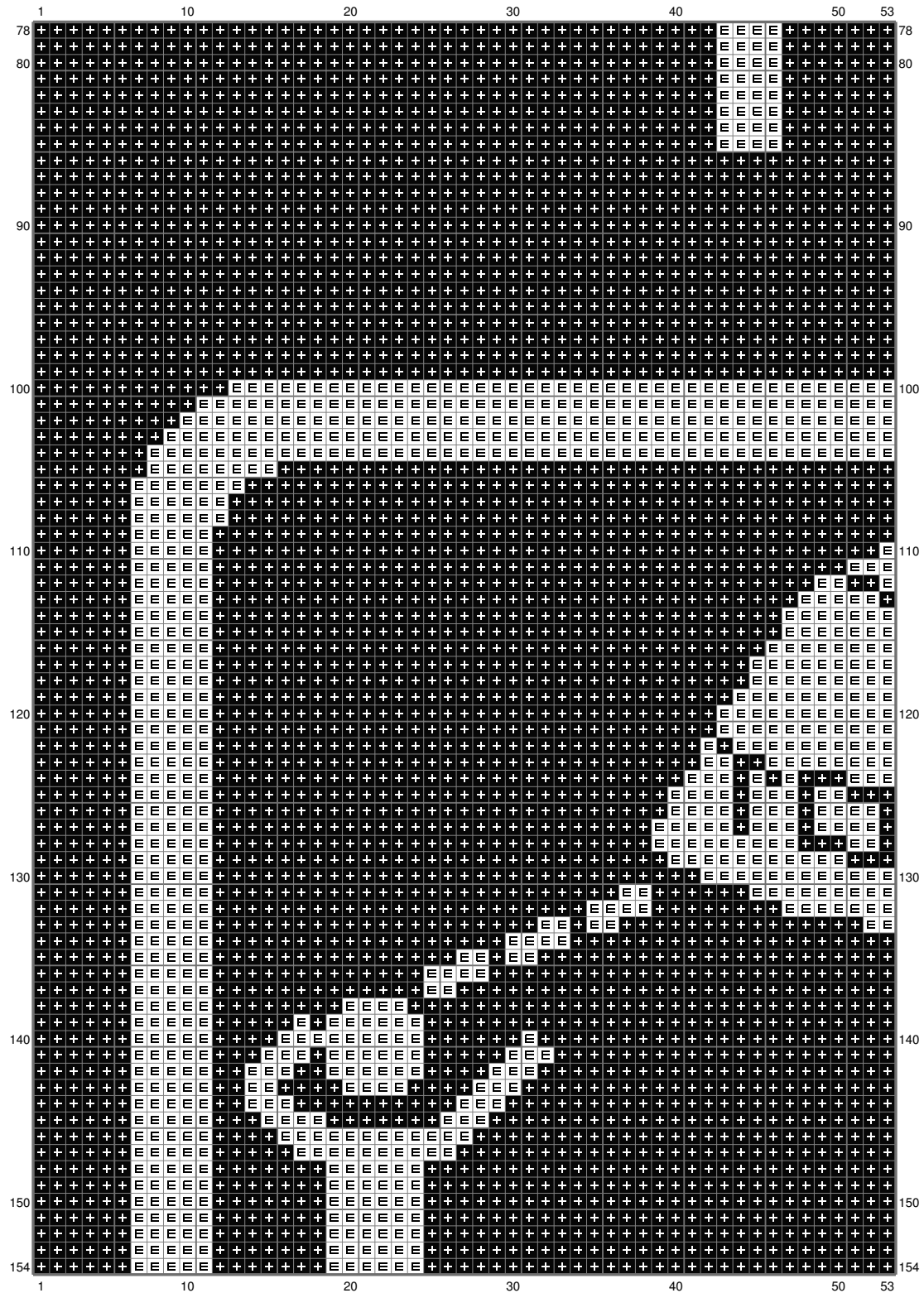
(This chart is printed using KG-Chart LE for Cross Stitch.)

# Untitled



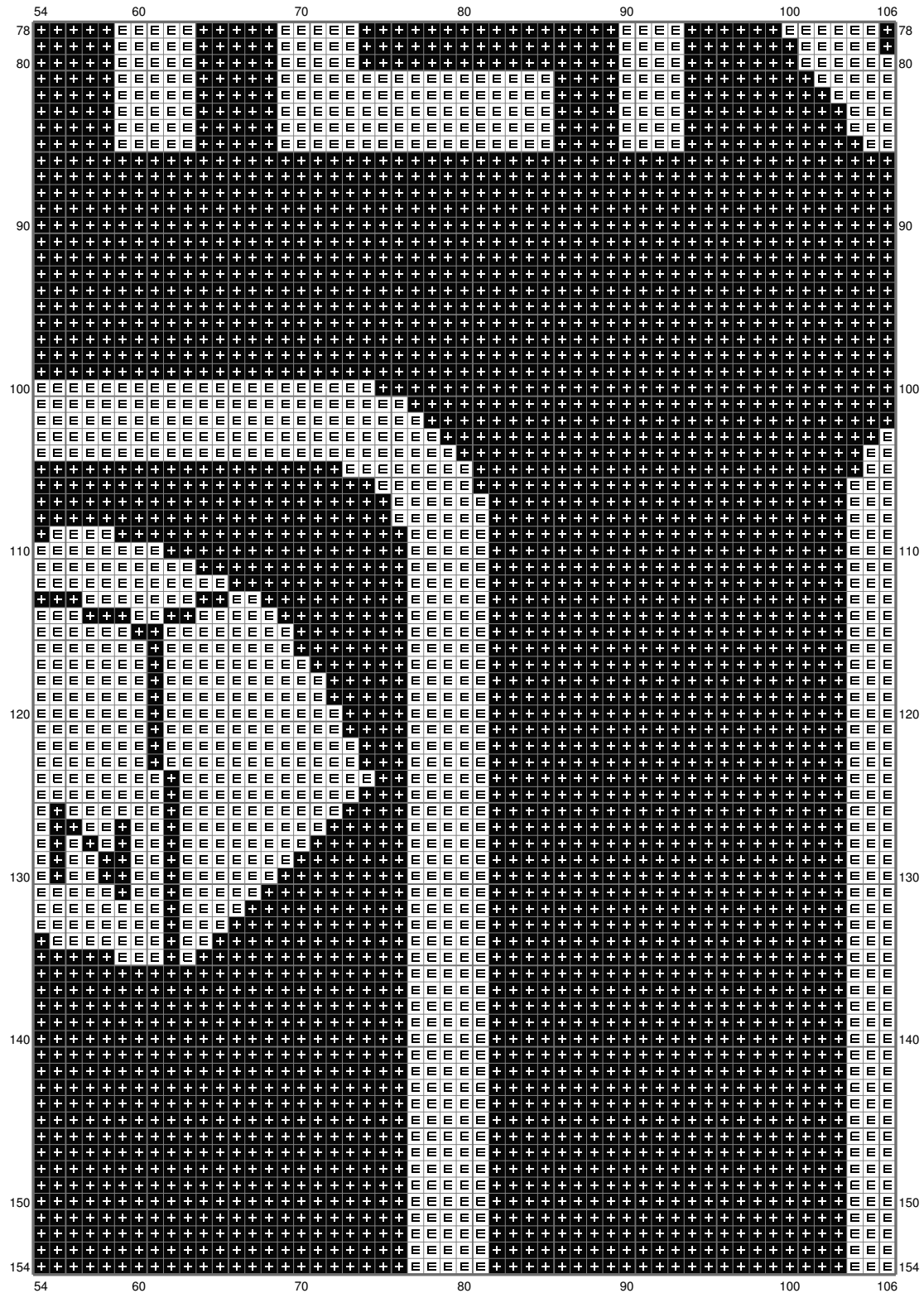


# Untitled



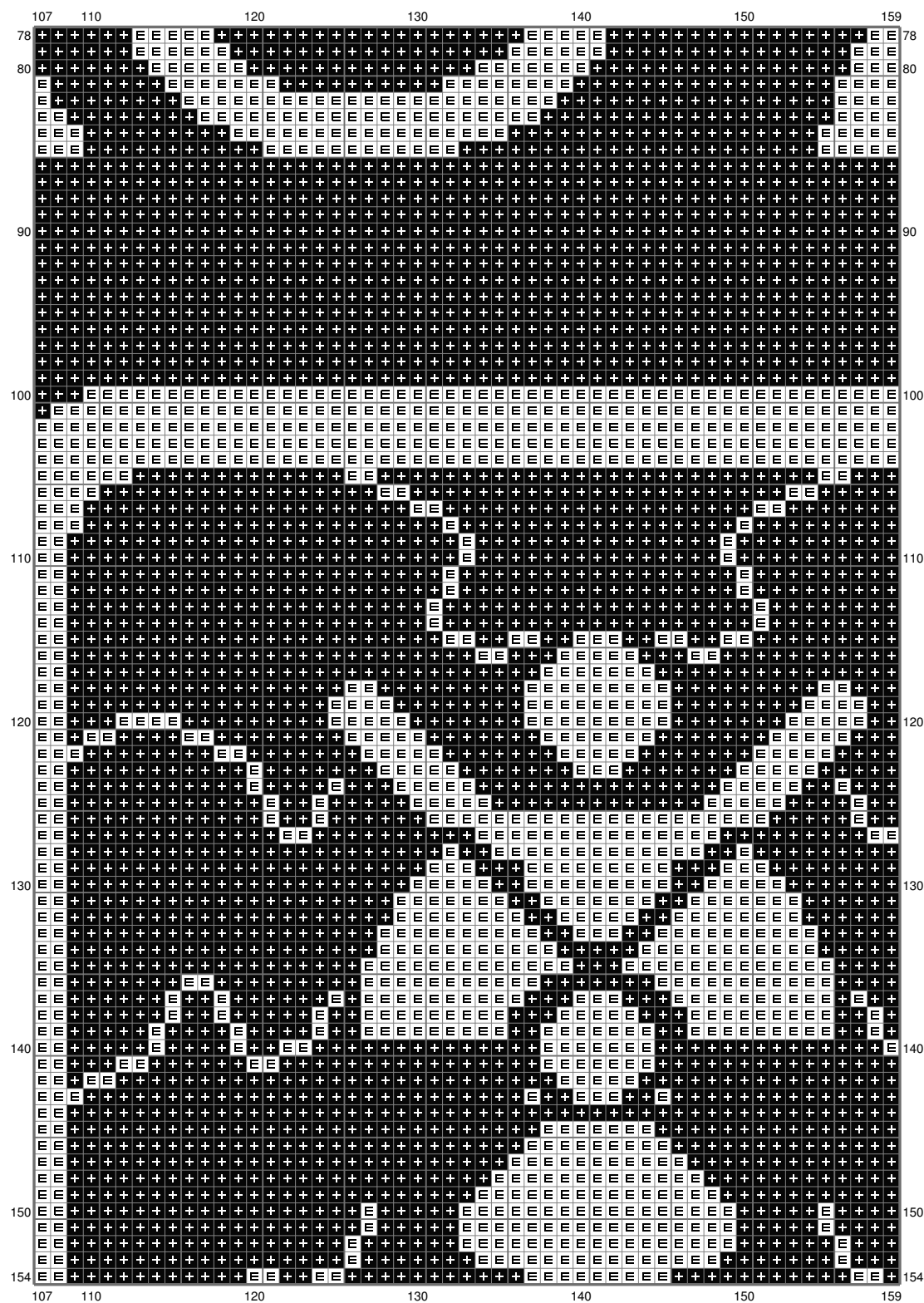
(This chart is printed using KG-Chart LE for Cross Stitch.)

# Untitled



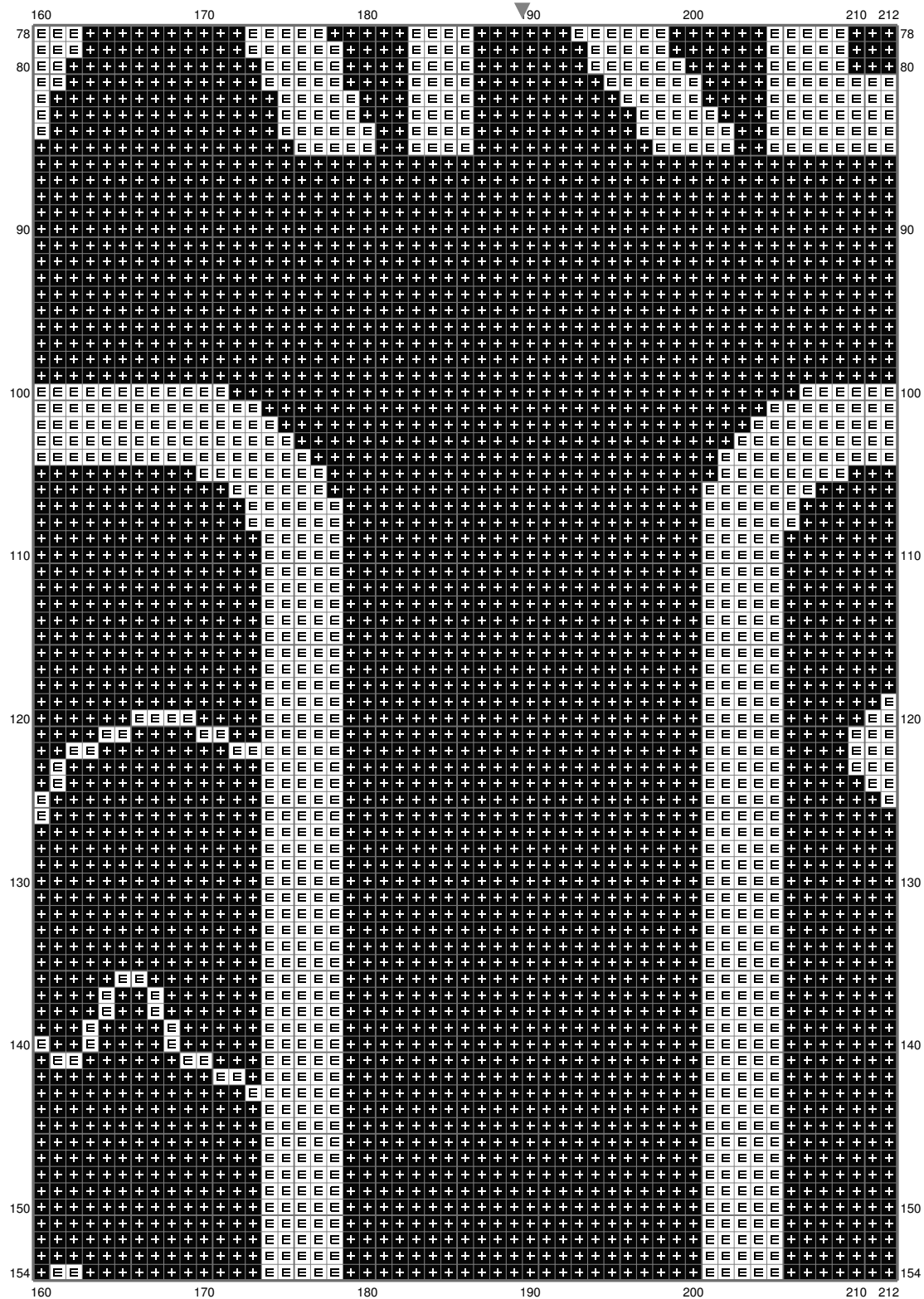
(This chart is printed using KG-Chart LE for Cross Stitch.)

# Untitled



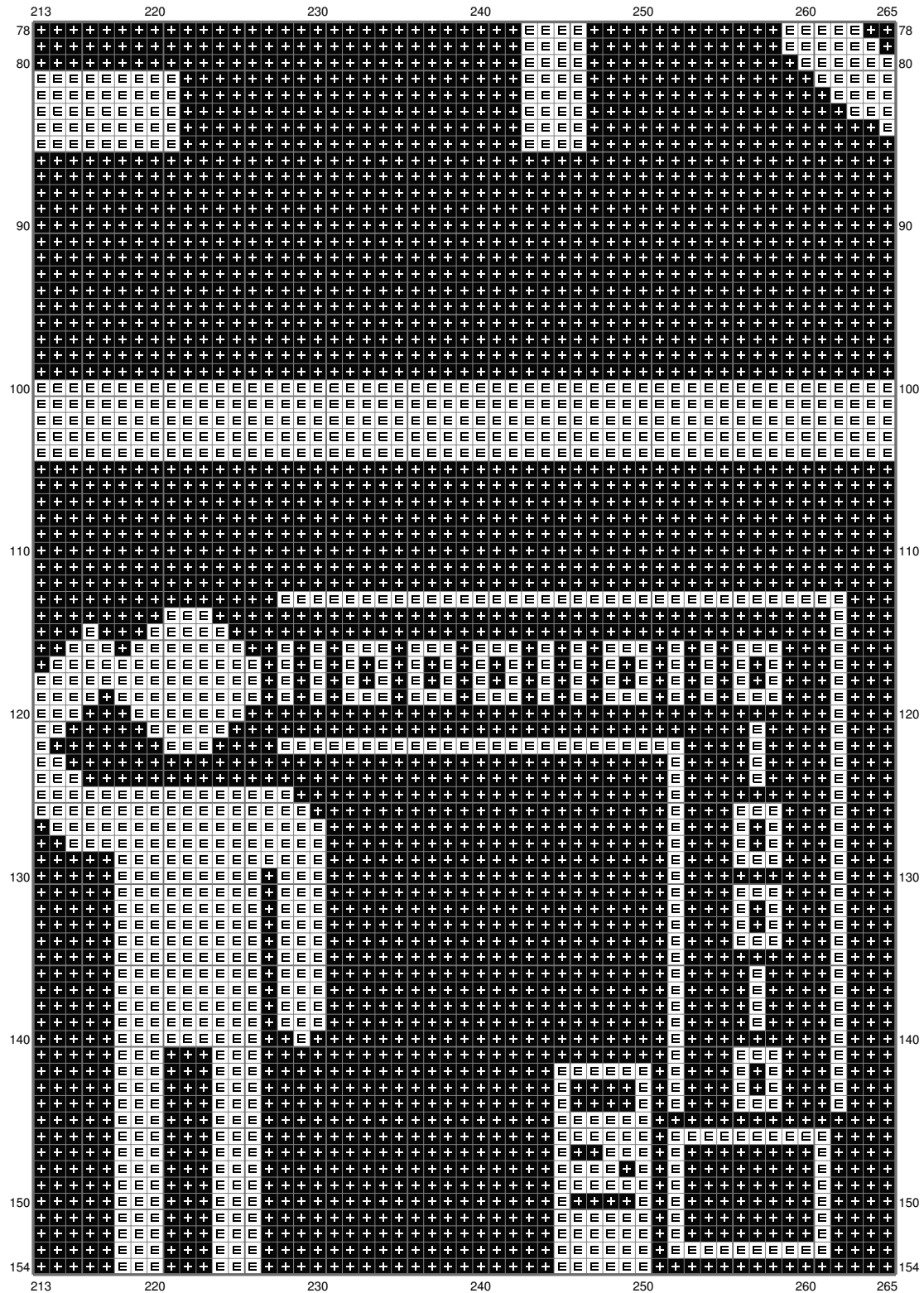
(This chart is printed using KG-Chart LE for Cross Stitch.)

# Untitled



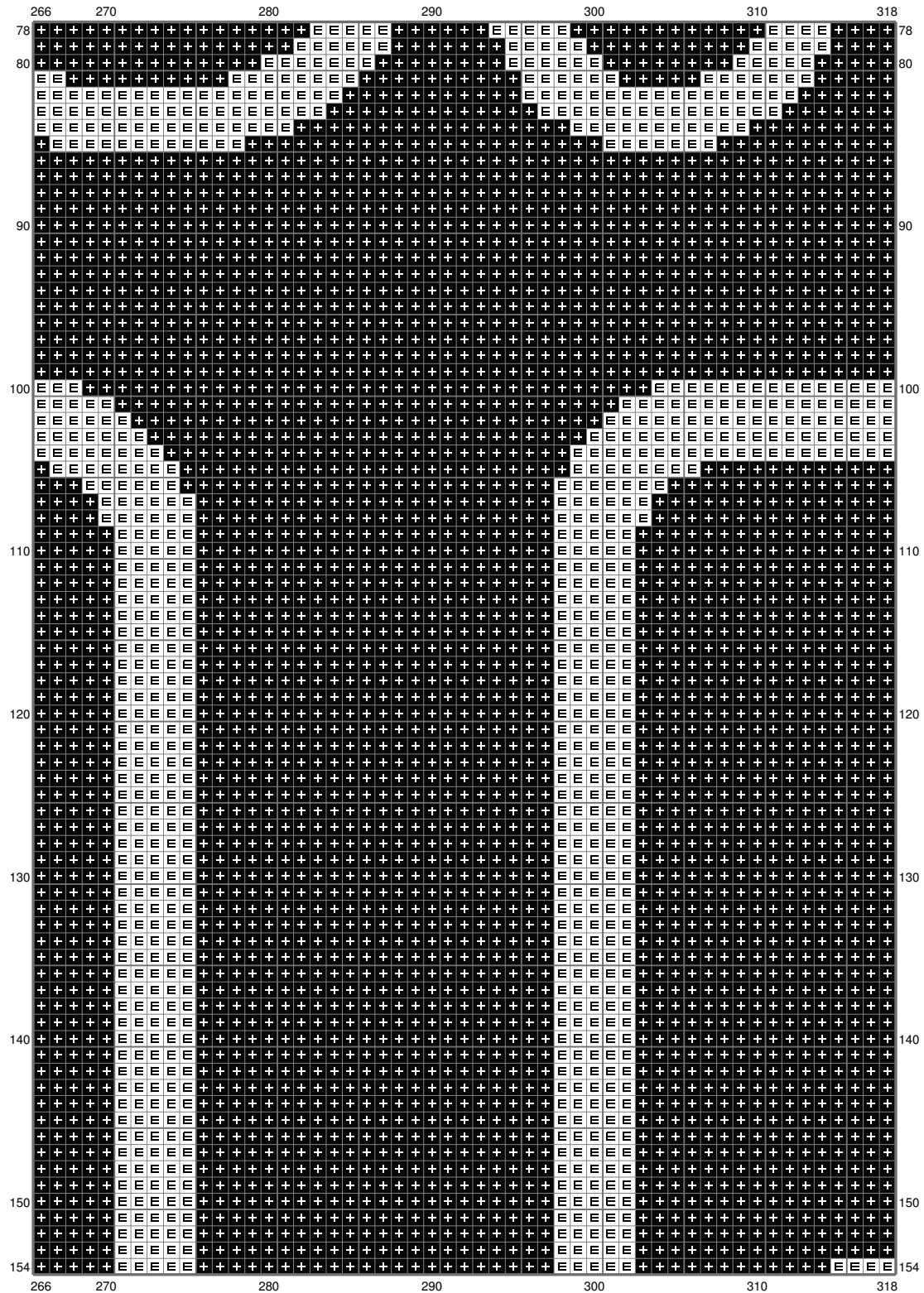
(This chart is printed using KG-Chart LE for Cross Stitch.)

# Untitled



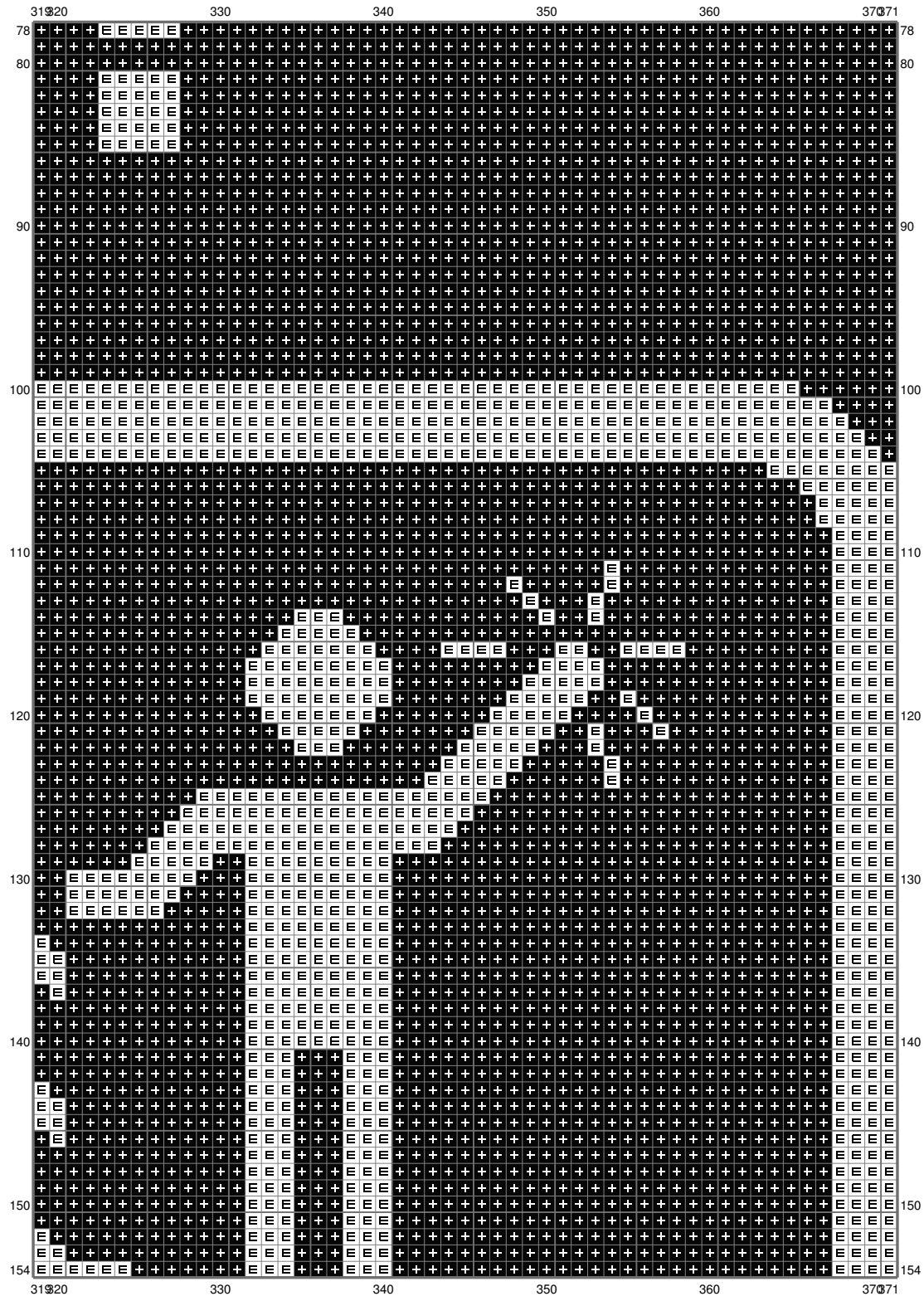
(This chart is printed using KG-Chart LE for Cross Stitch.)

# Untitled

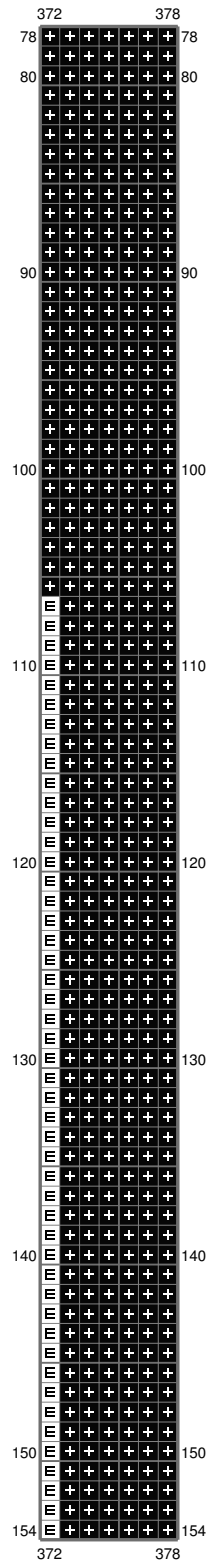


(This chart is printed using KG-Chart LE for Cross Stitch.)

# Untitled

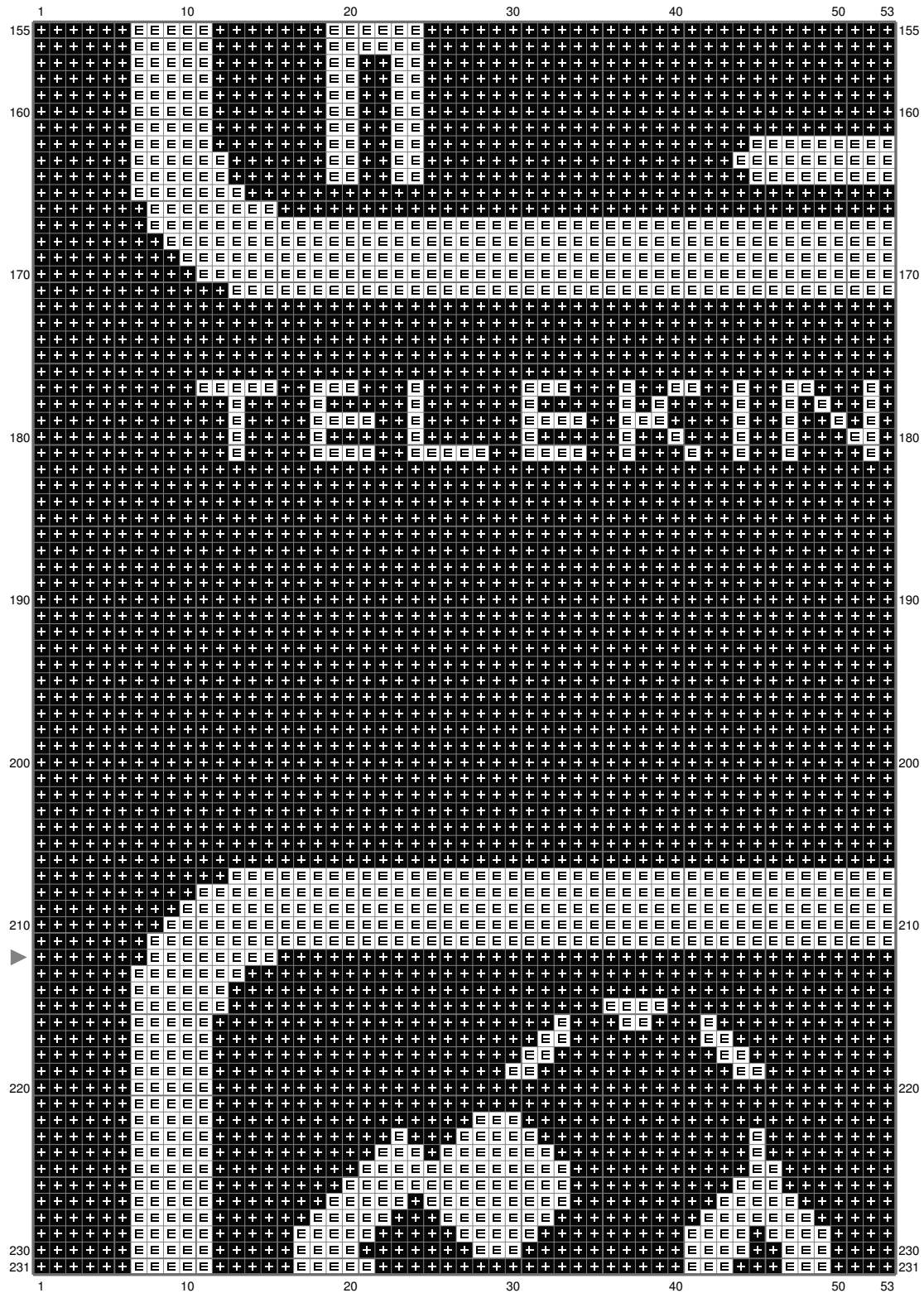


# Untitled



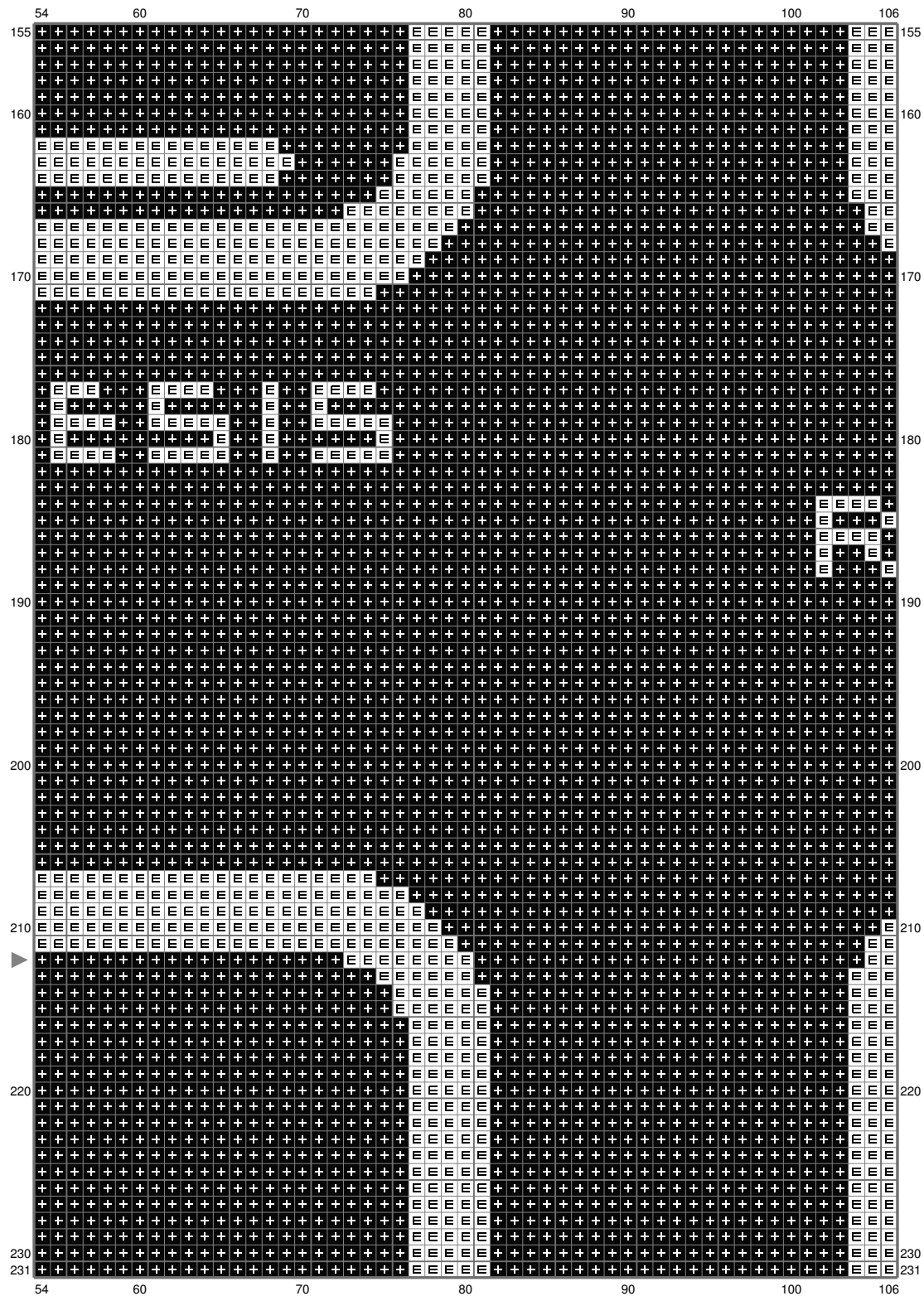


# Untitled



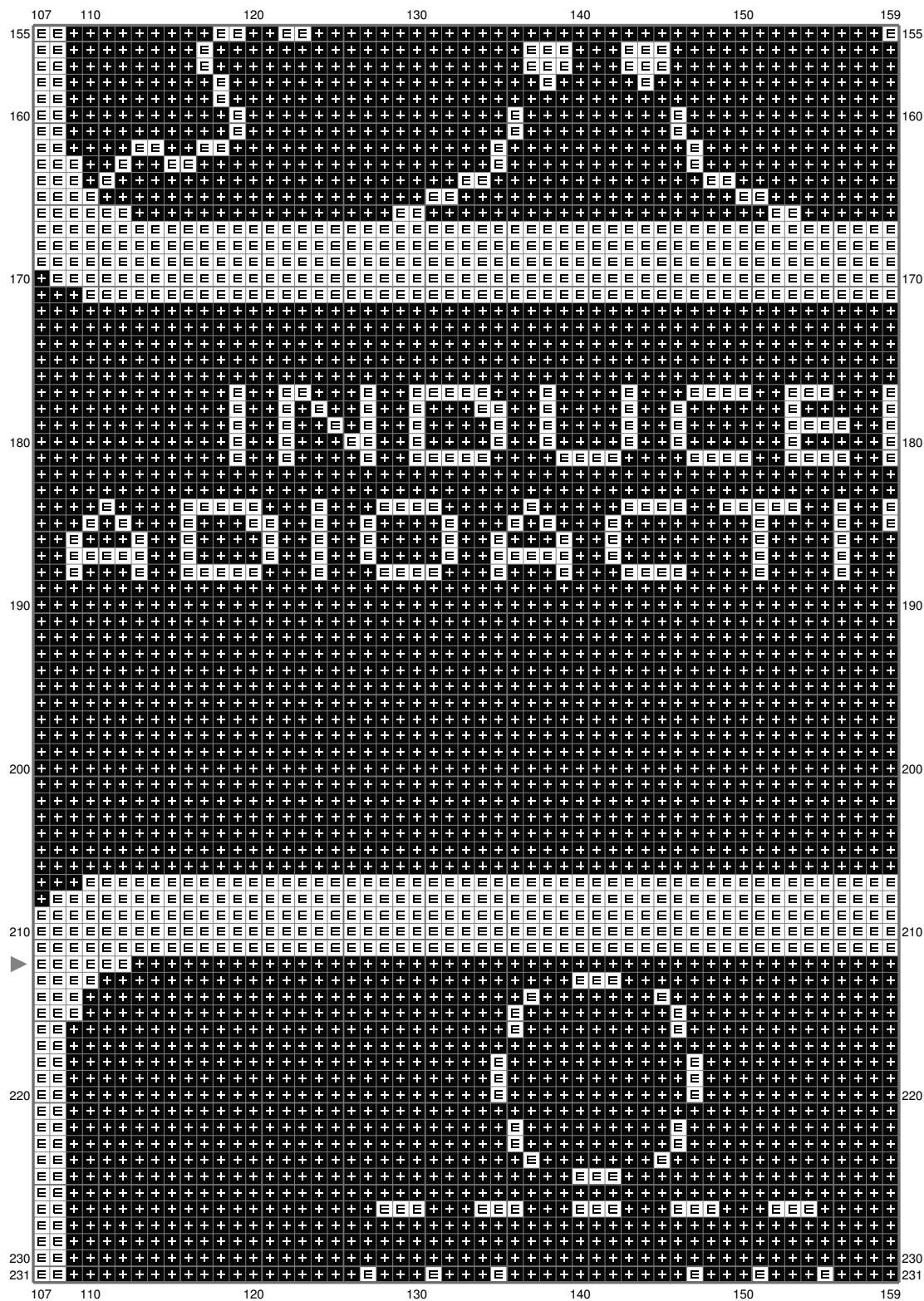
(This chart is printed using KG-Chart LE for Cross Stitch.)

# Untitled



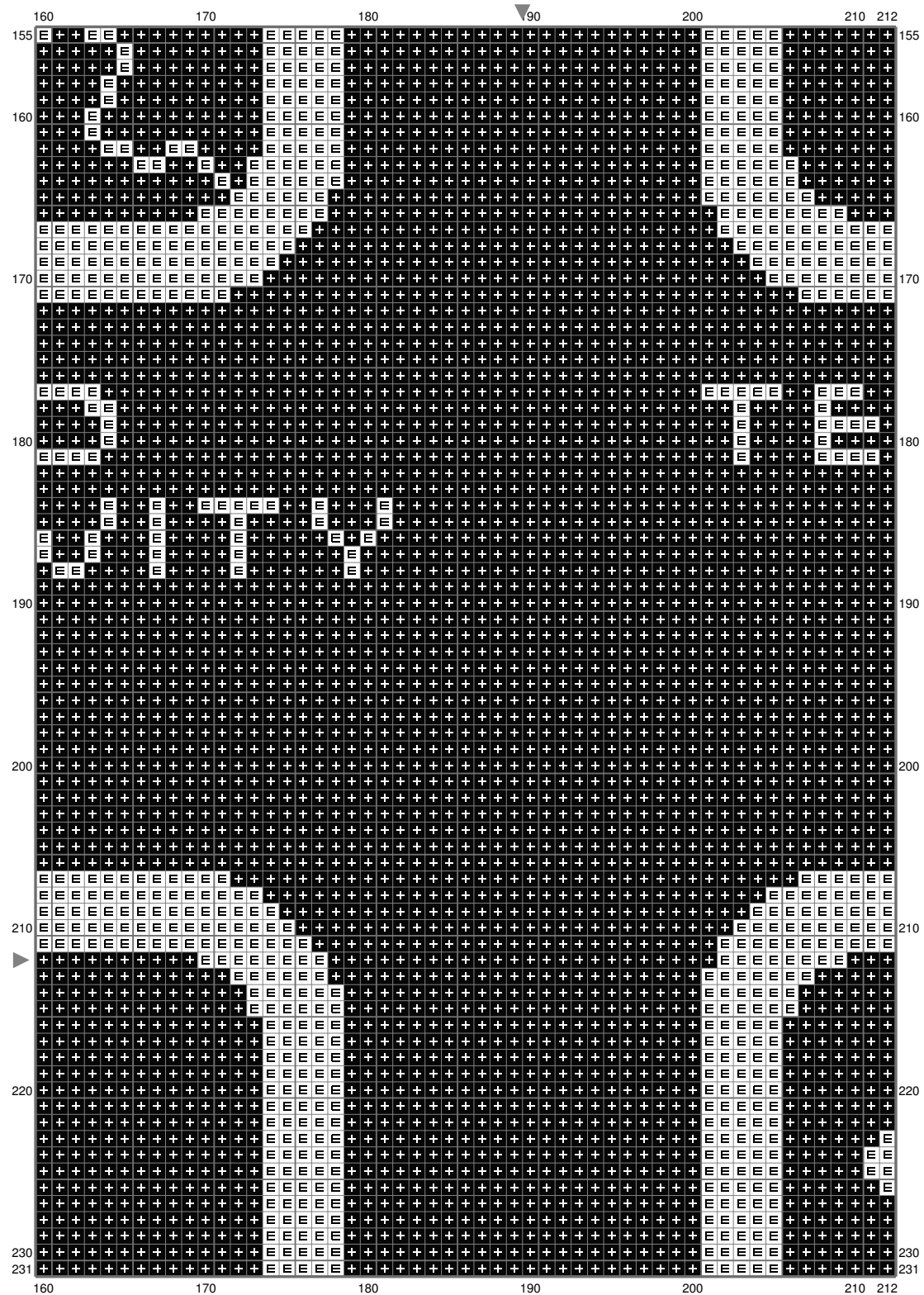
(This chart is printed using KG-Chart LE for Cross Stitch.)

# Untitled



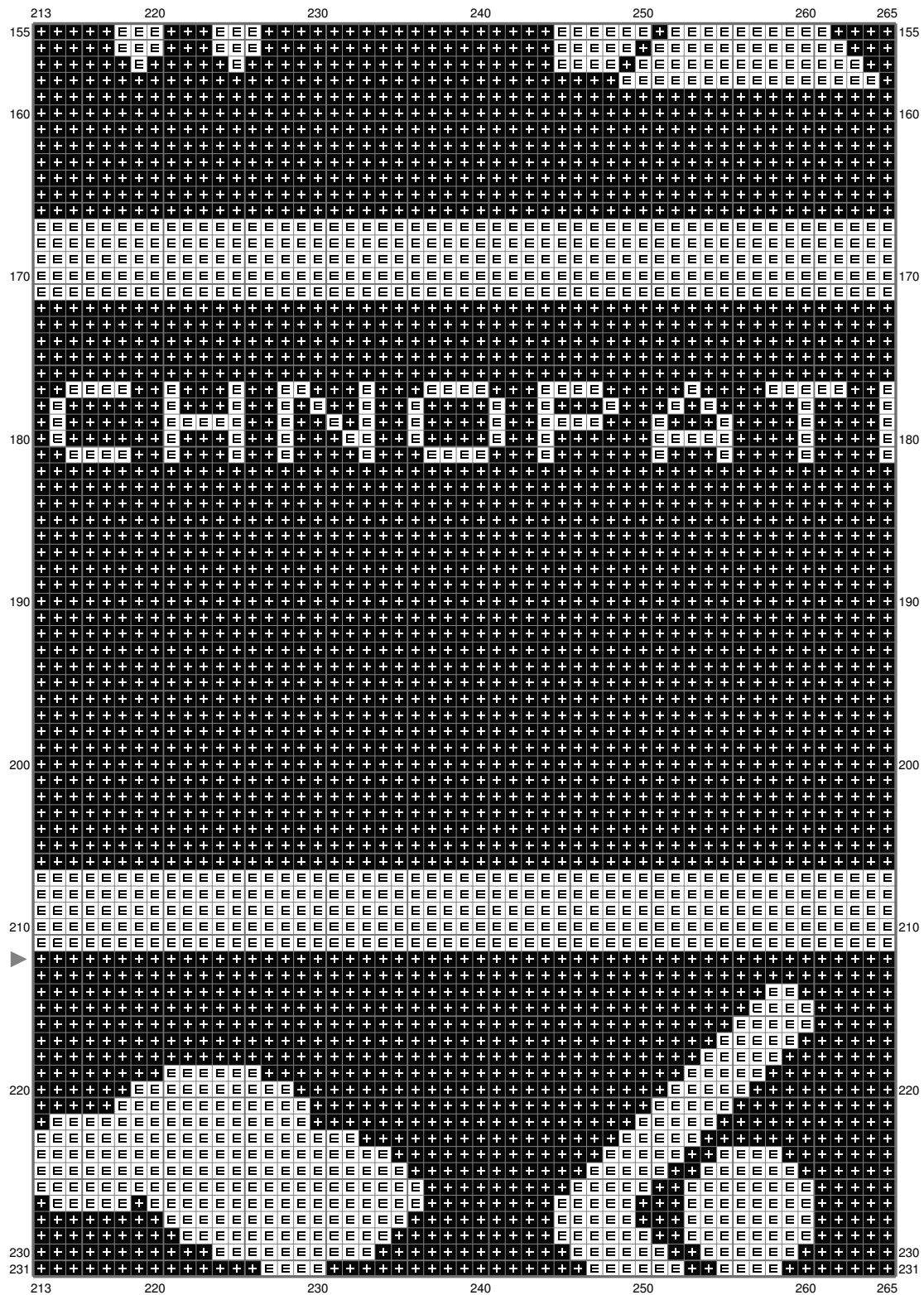
(This chart is printed using KG-Chart LE for Cross Stitch.)

# Untitled



(This chart is printed using KG-Chart LE for Cross Stitch.)

# Untitled



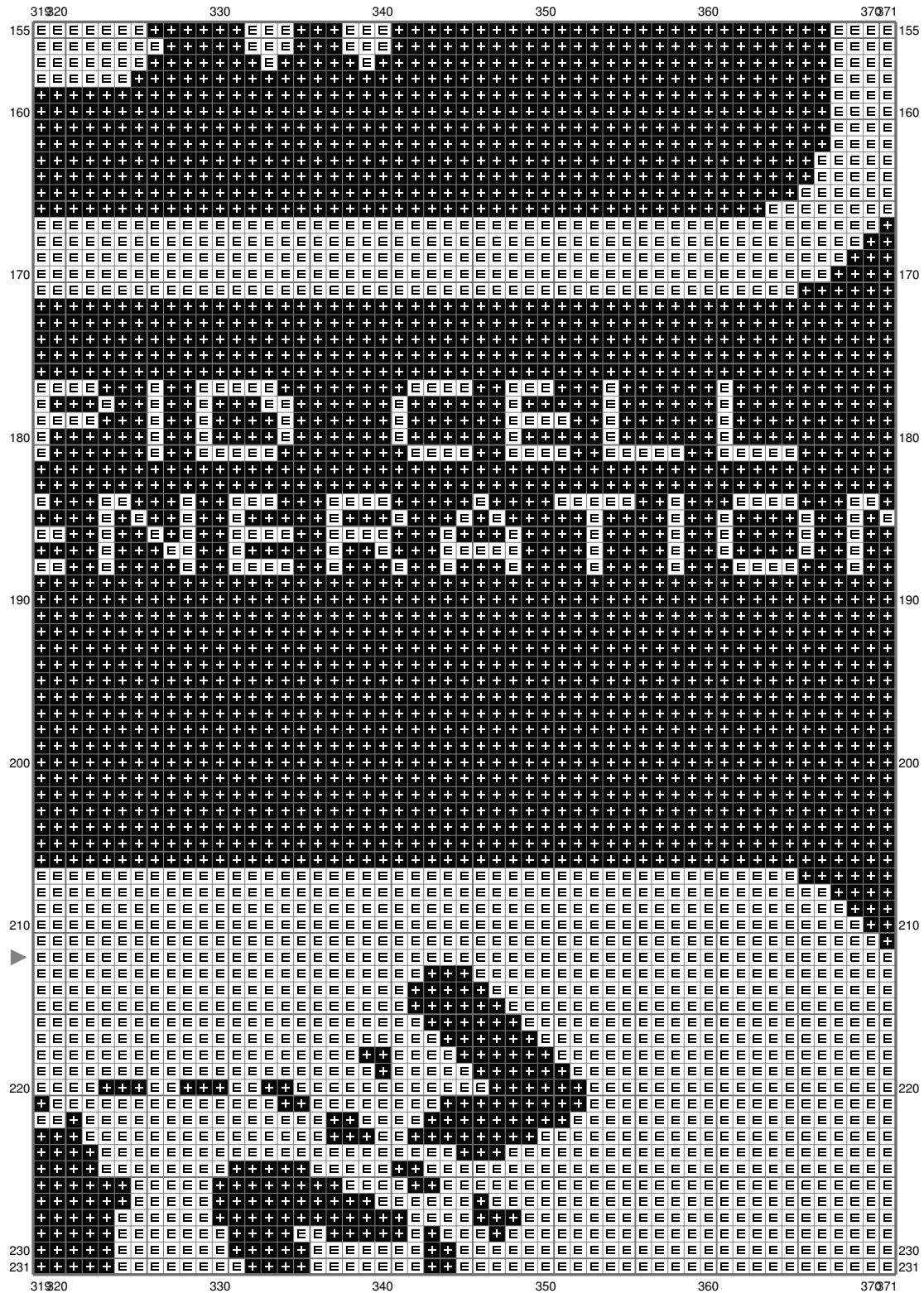
(This chart is printed using KG-Chart LE for Cross Stitch.)

# Untitled

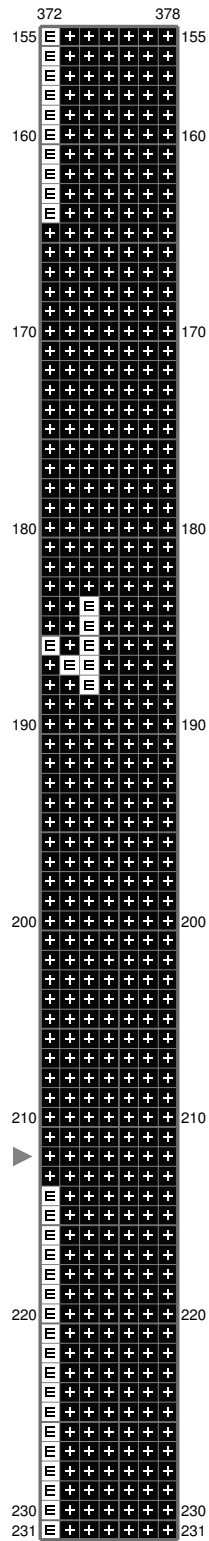


(This chart is printed using KG-Chart LE for Cross Stitch.)

# Untitled

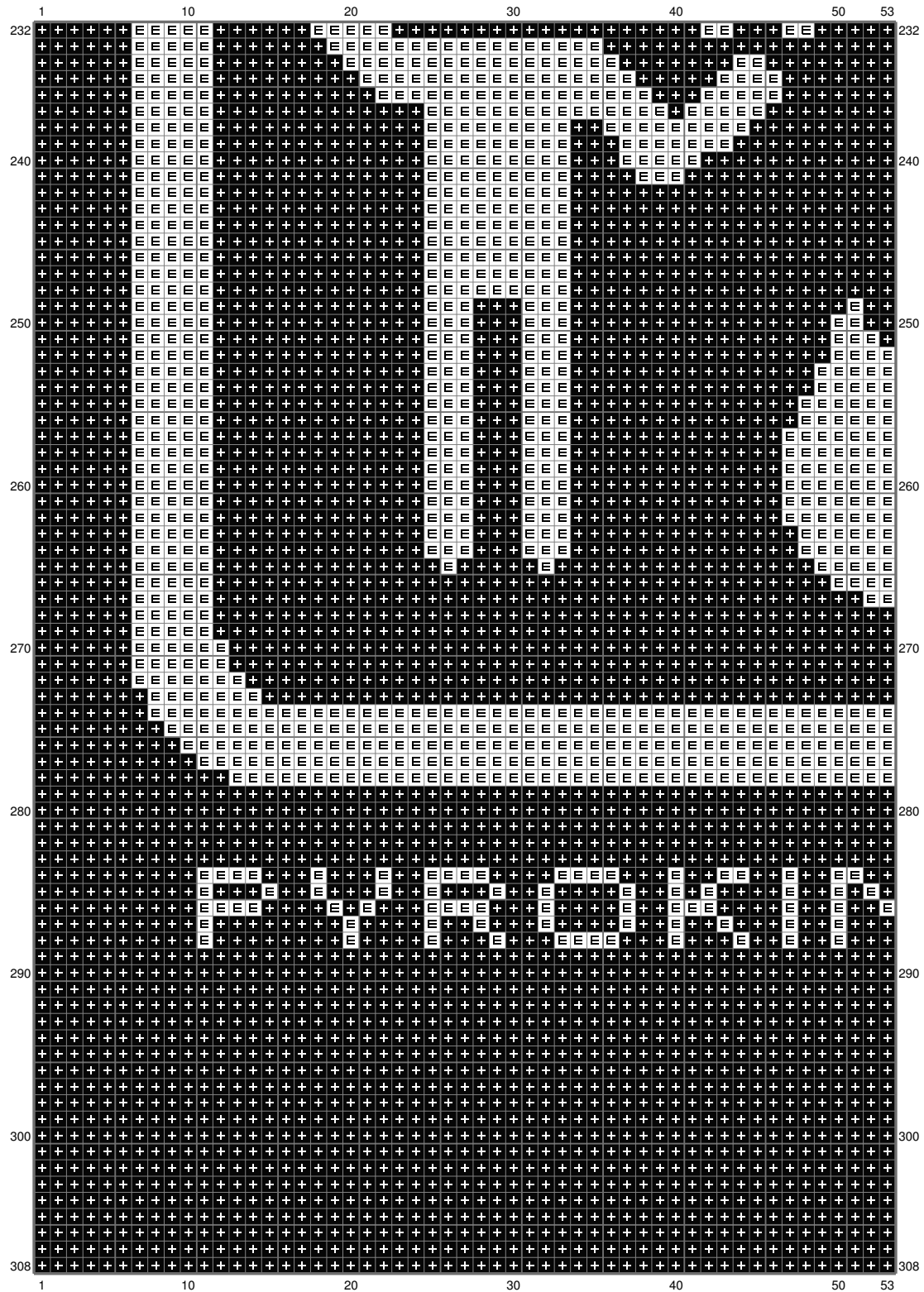


# Untitled



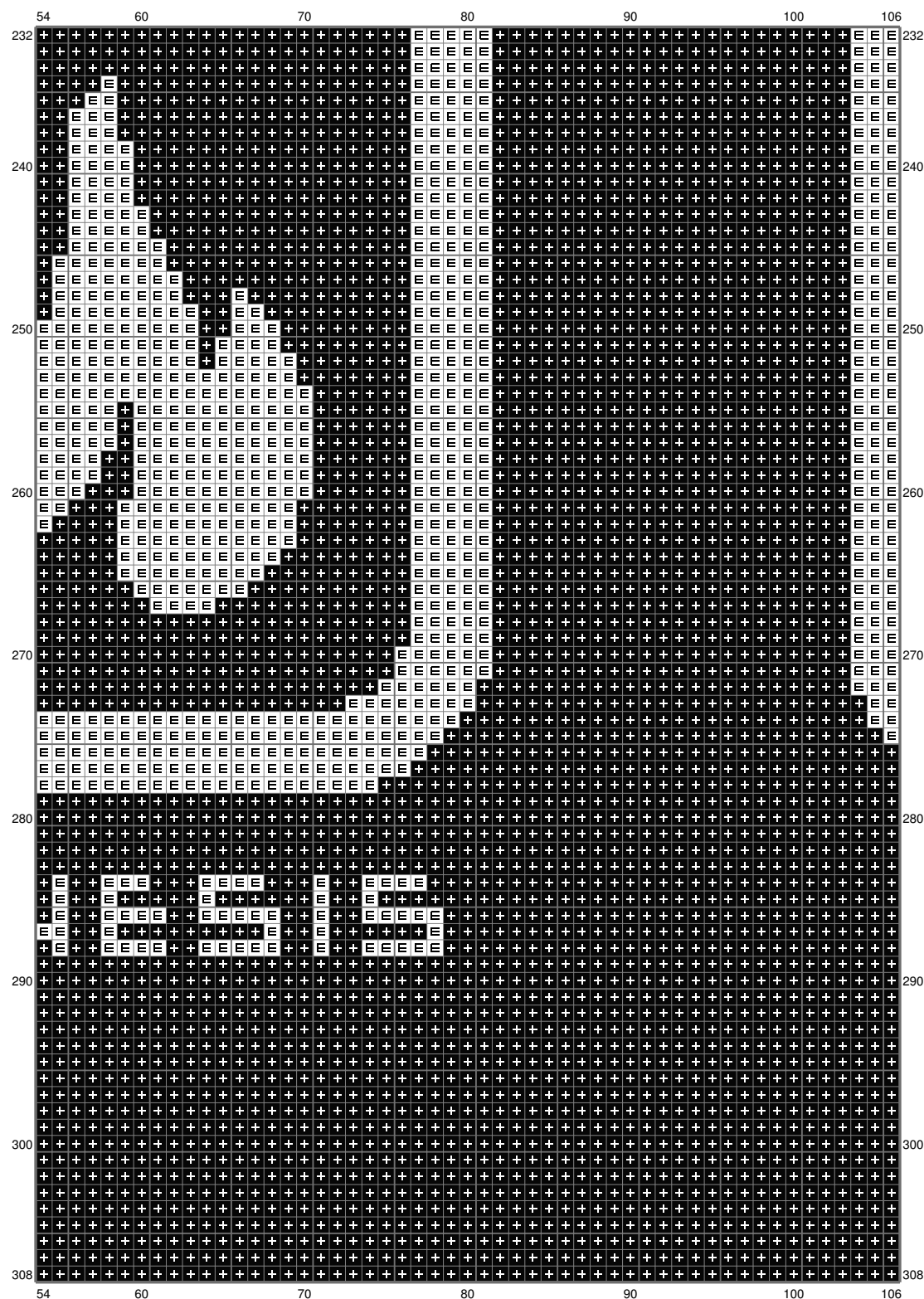


# Untitled



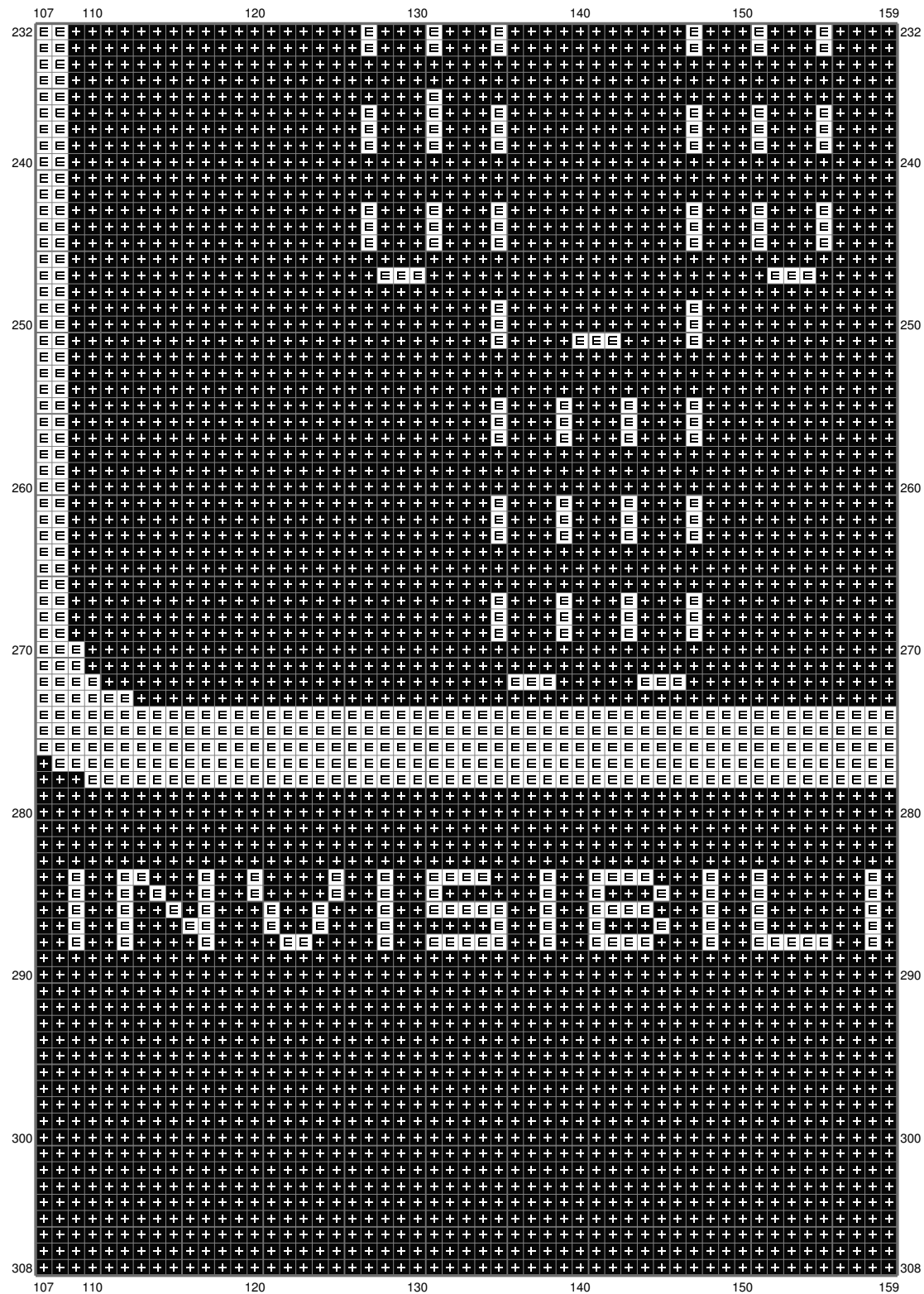
(This chart is printed using KG-Chart LE for Cross Stitch.)

# Untitled



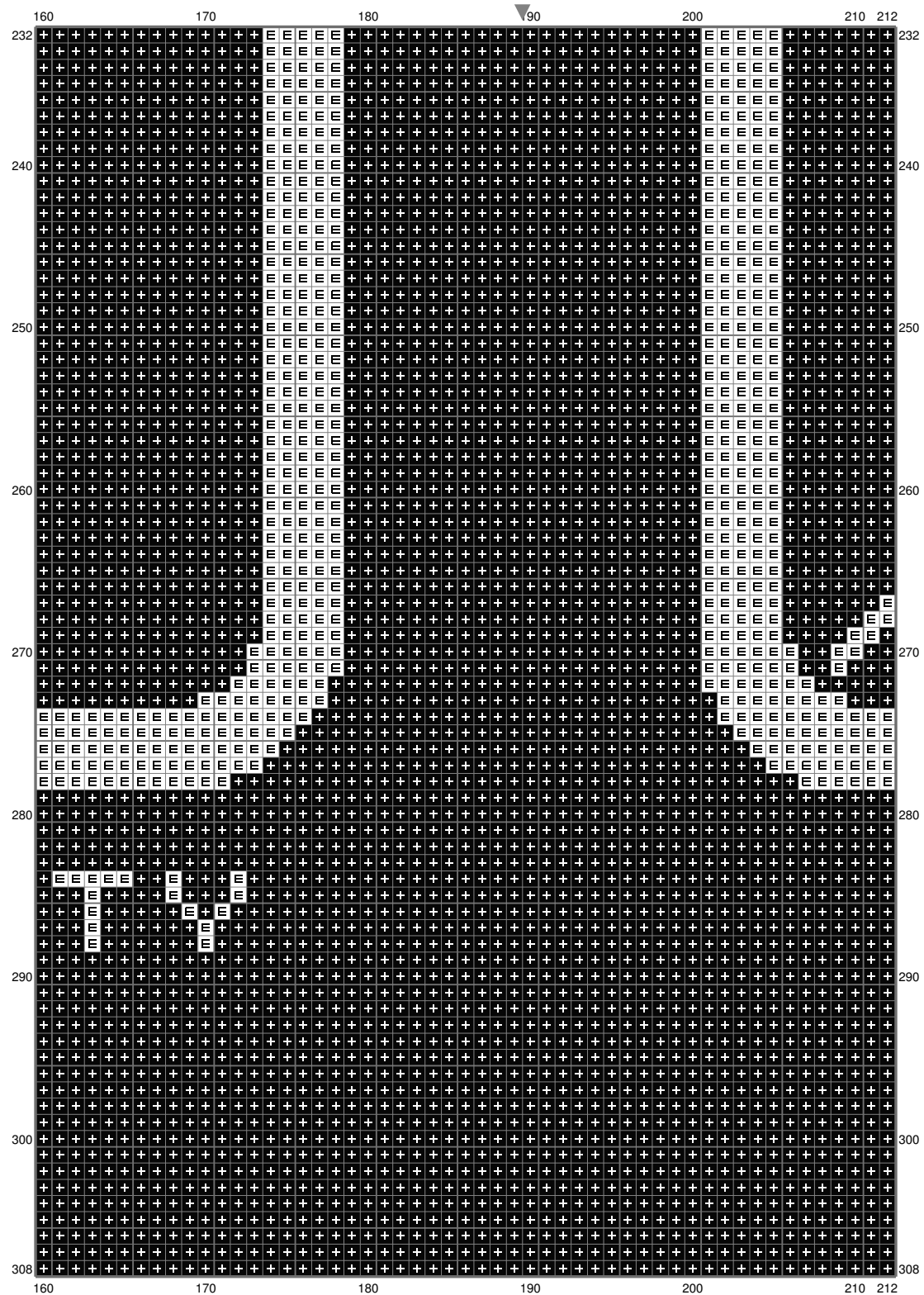
(This chart is printed using KG-Chart LE for Cross Stitch.)

# Untitled



(This chart is printed using KG-Chart LE for Cross Stitch.)

# Untitled



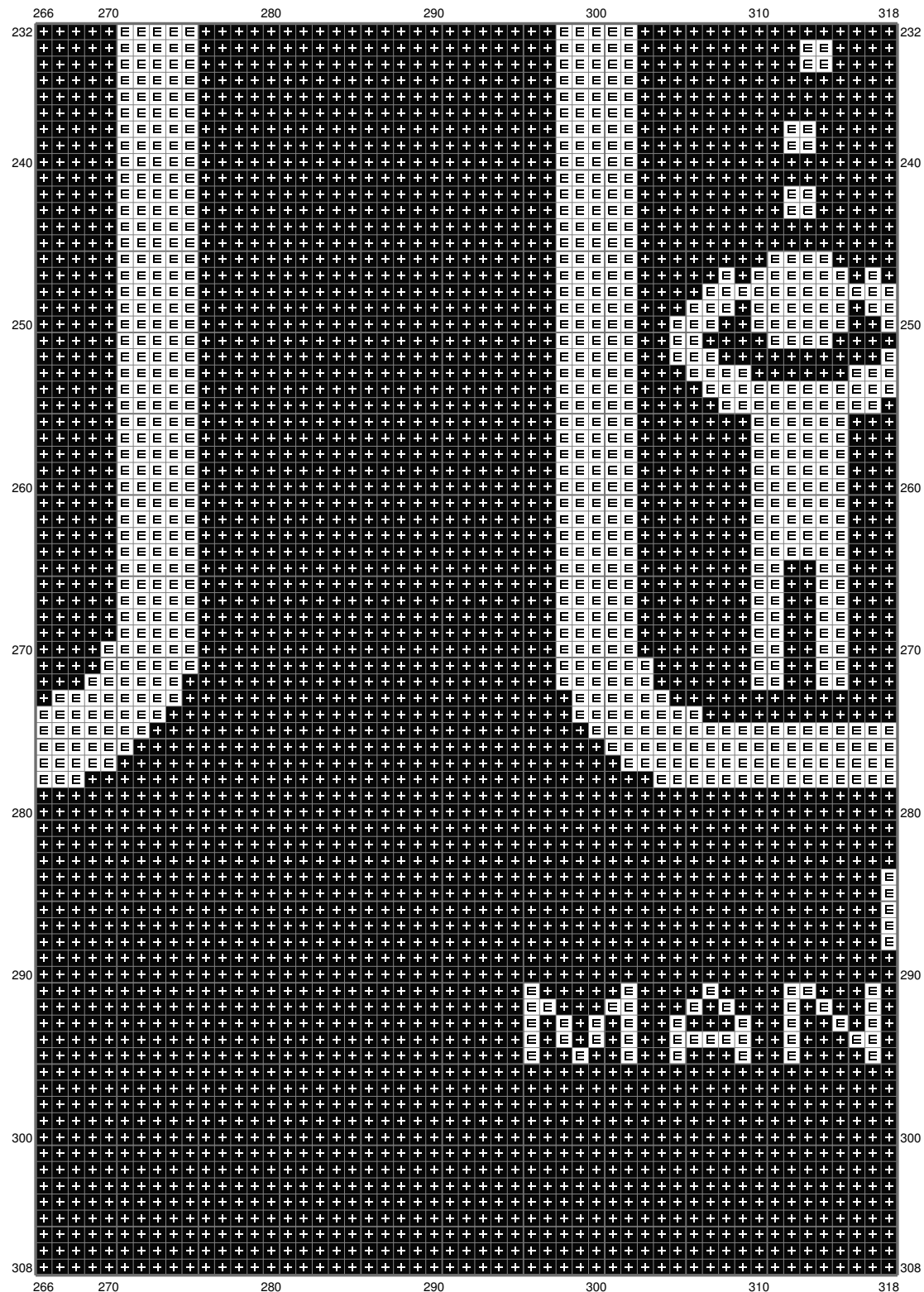
(This chart is printed using KG-Chart LE for Cross Stitch.)

# Untitled



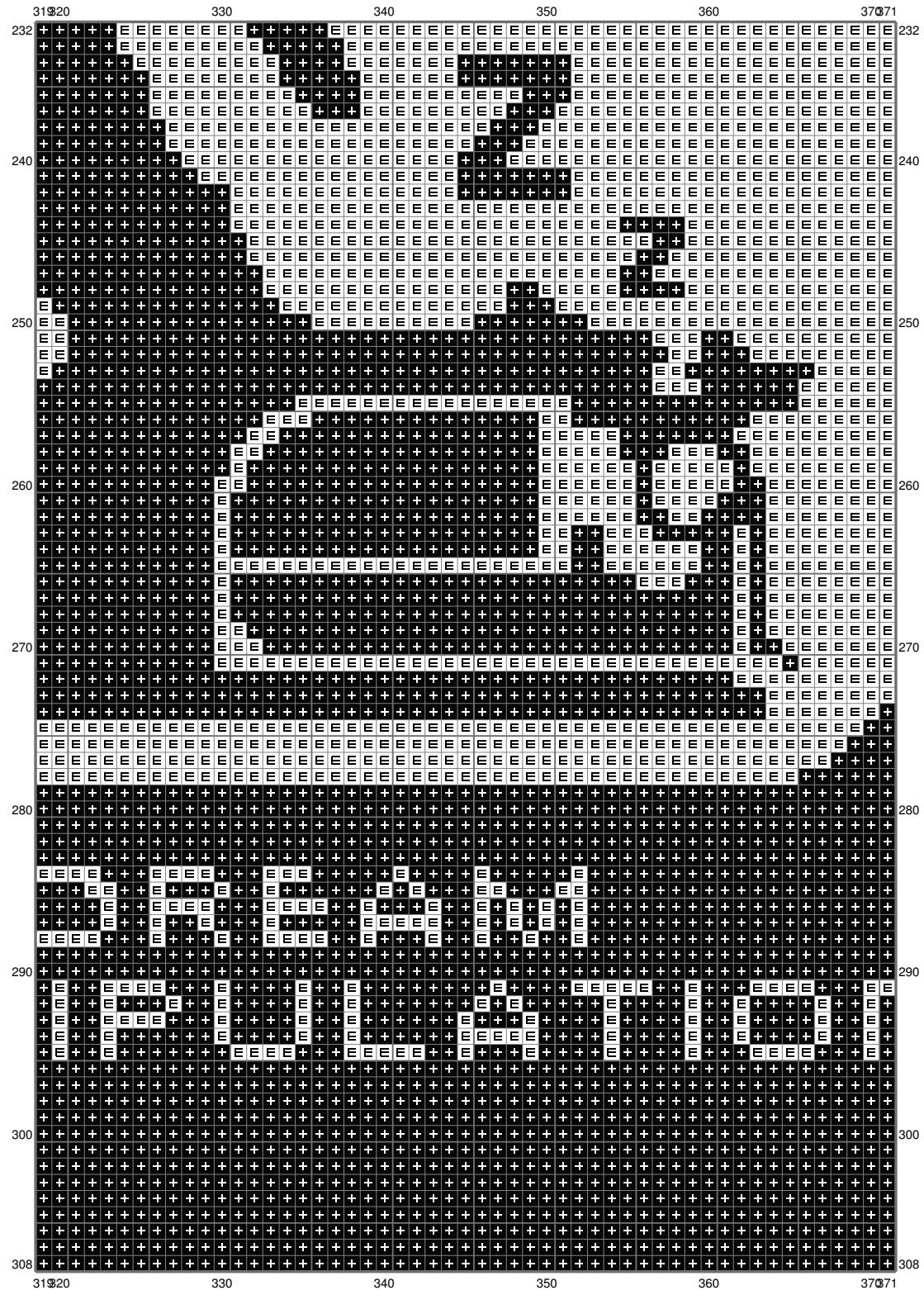
(This chart is printed using KG-Chart LE for Cross Stitch.)

# Untitled



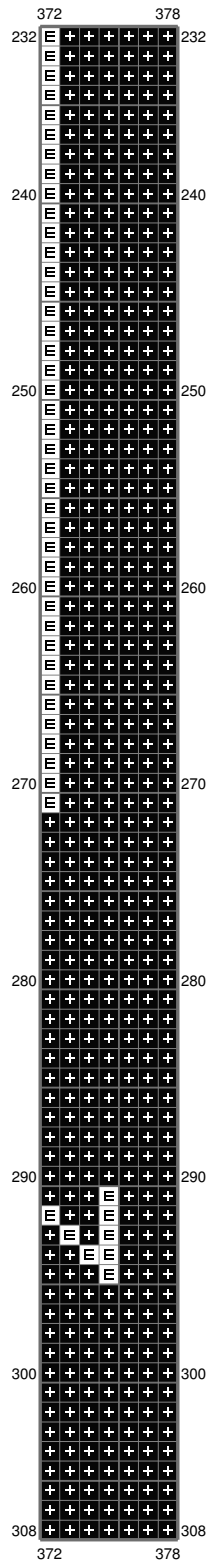
(This chart is printed using KG-Chart LE for Cross Stitch.)

# Untitled



(This chart is printed using KG-Chart LE for Cross Stitch.)

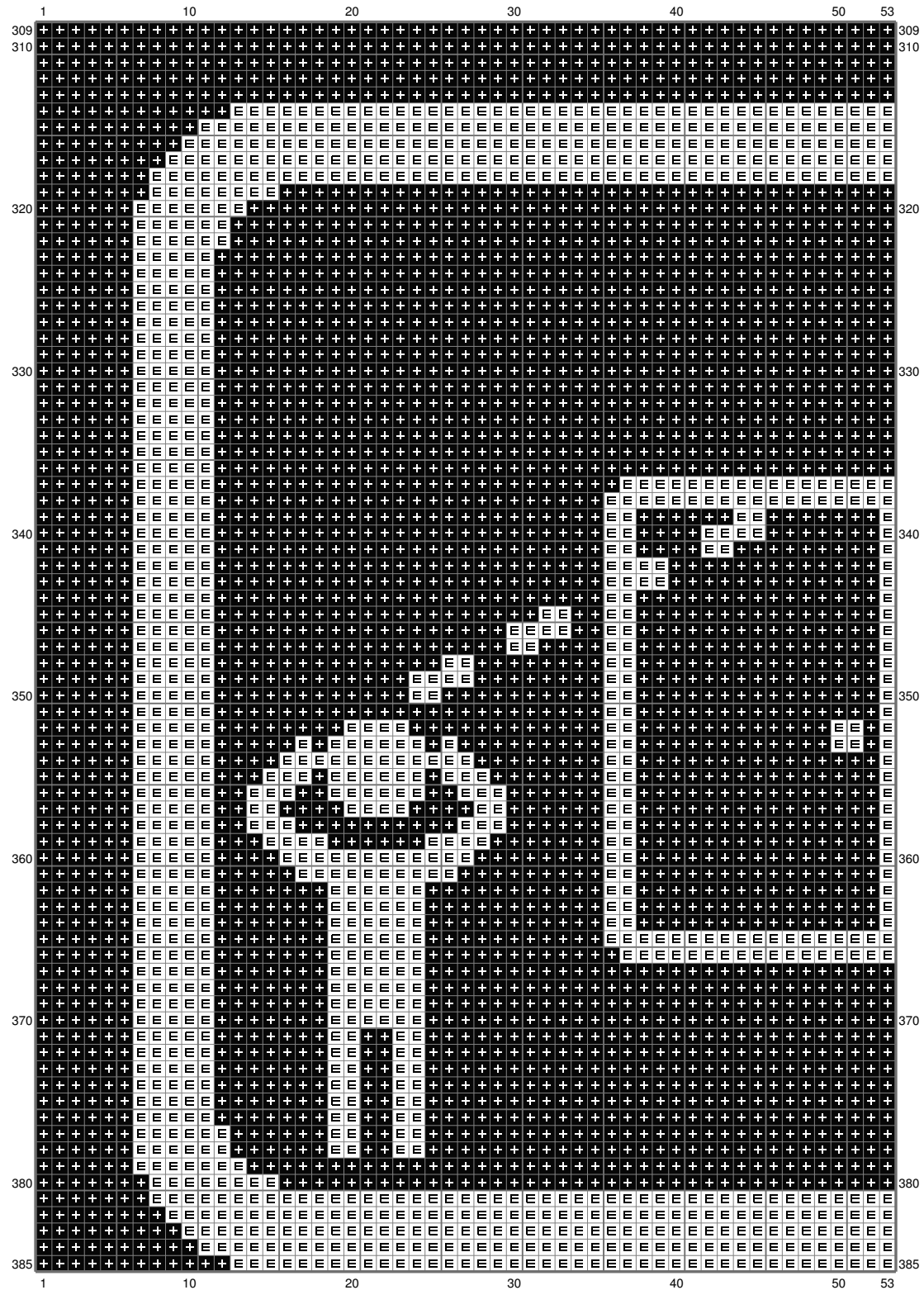
# Untitled



(This chart is printed using KG-Chart LE for Cross Stitch.)

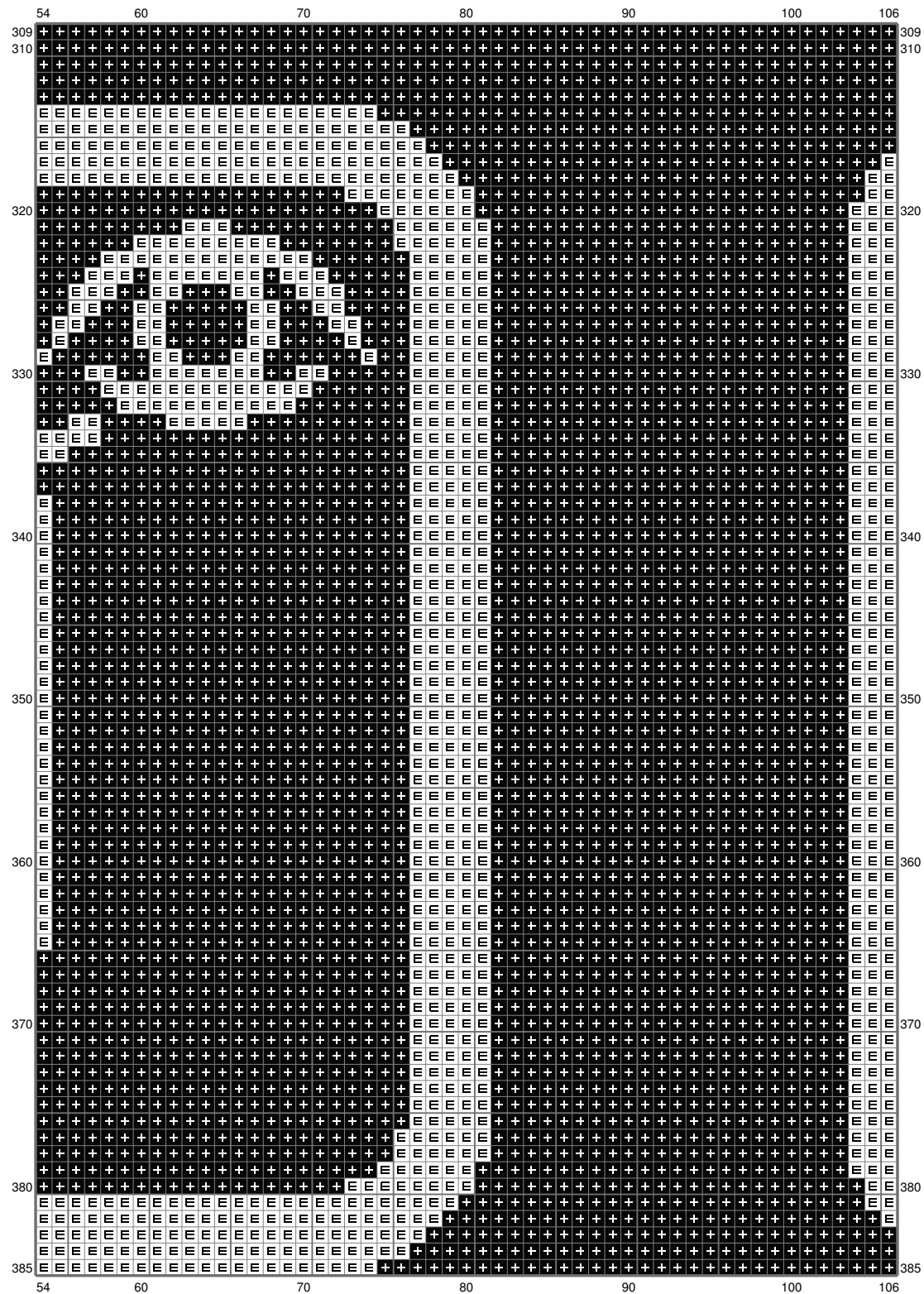


# Untitled



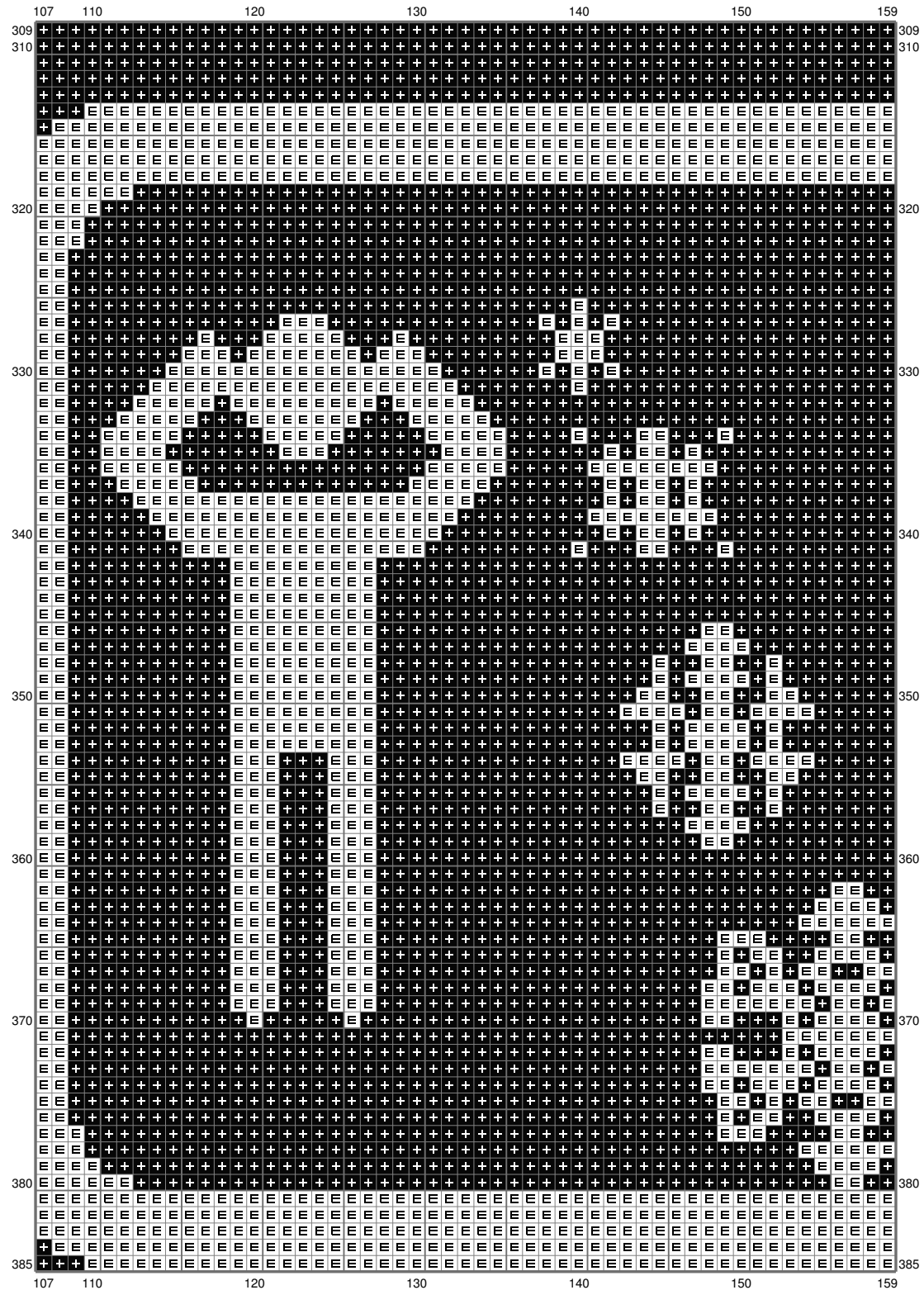
(This chart is printed using KG-Chart LE for Cross Stitch.)

# Untitled



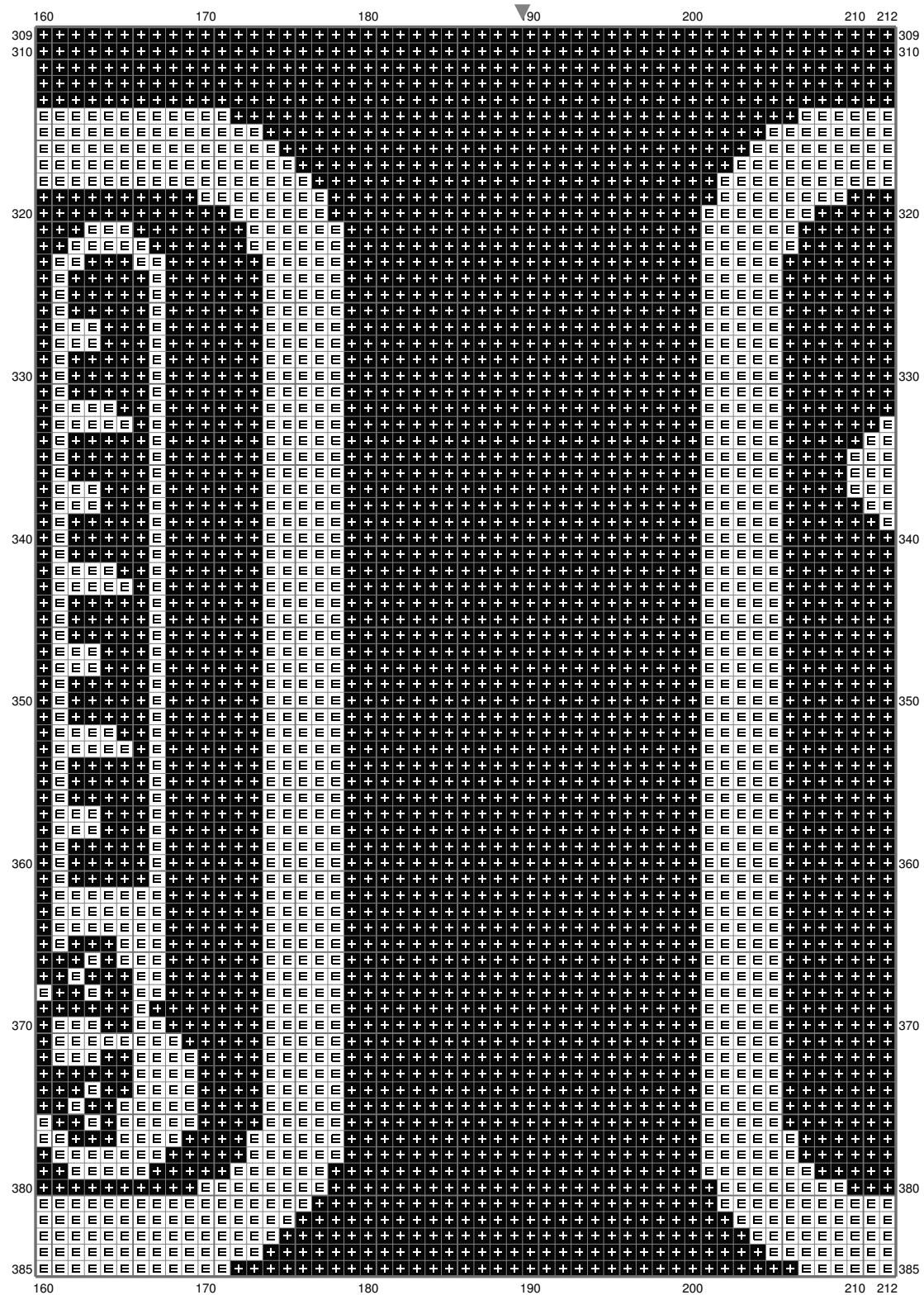
(This chart is printed using KG-Chart LE for Cross Stitch.)

# Untitled



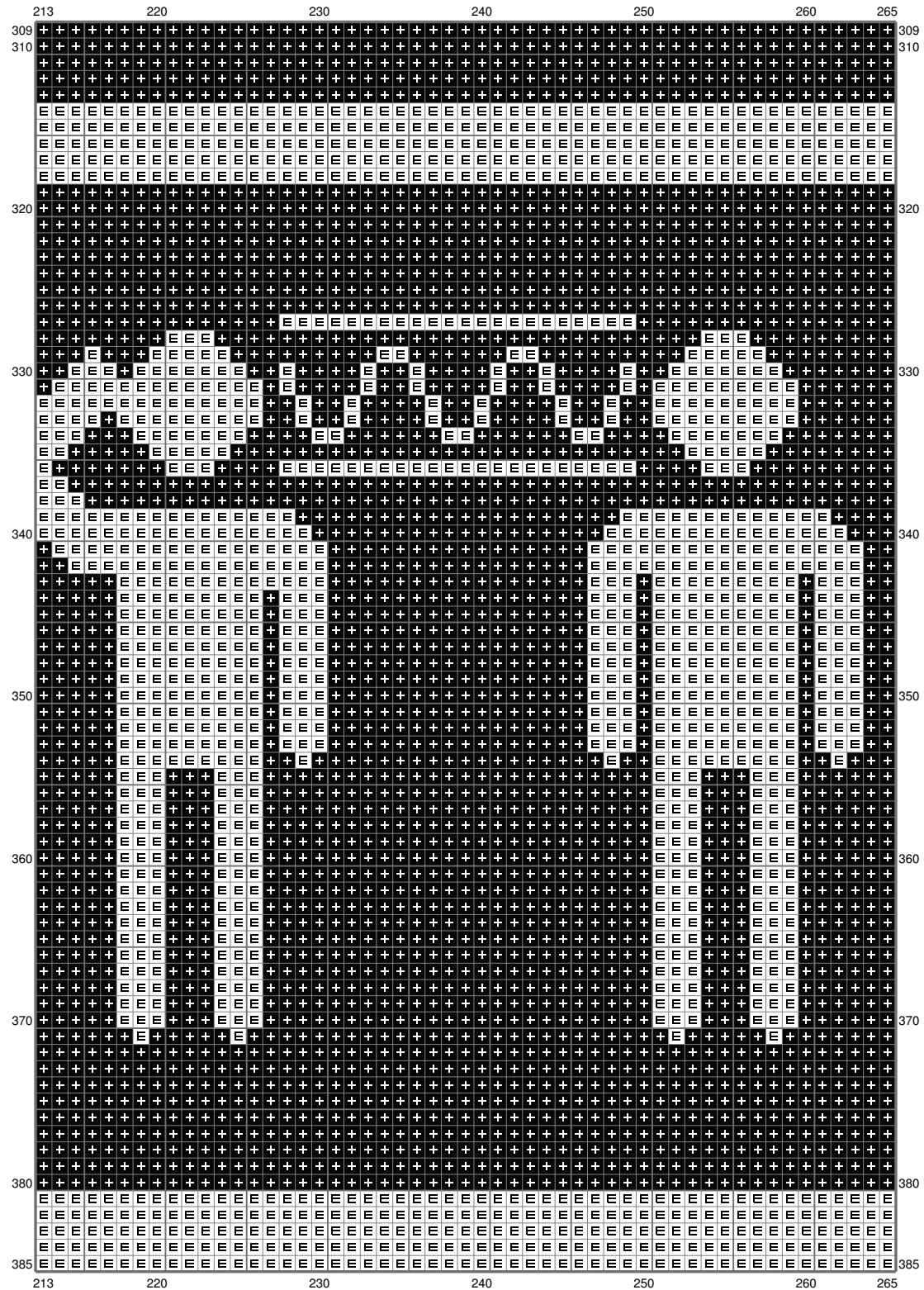
(This chart is printed using KG-Chart LE for Cross Stitch.)

# Untitled



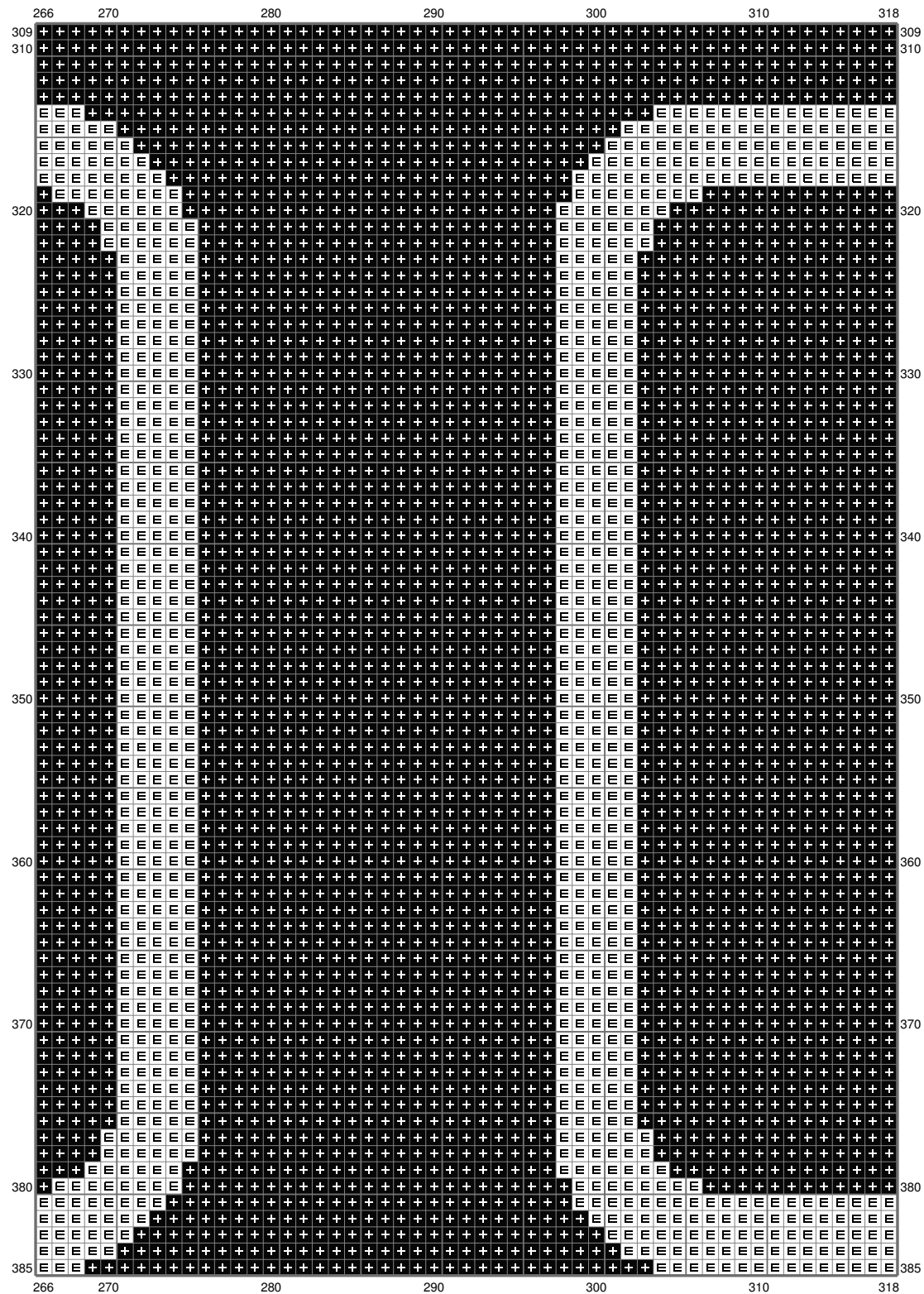
(This chart is printed using KG-Chart LE for Cross Stitch.)

# Untitled

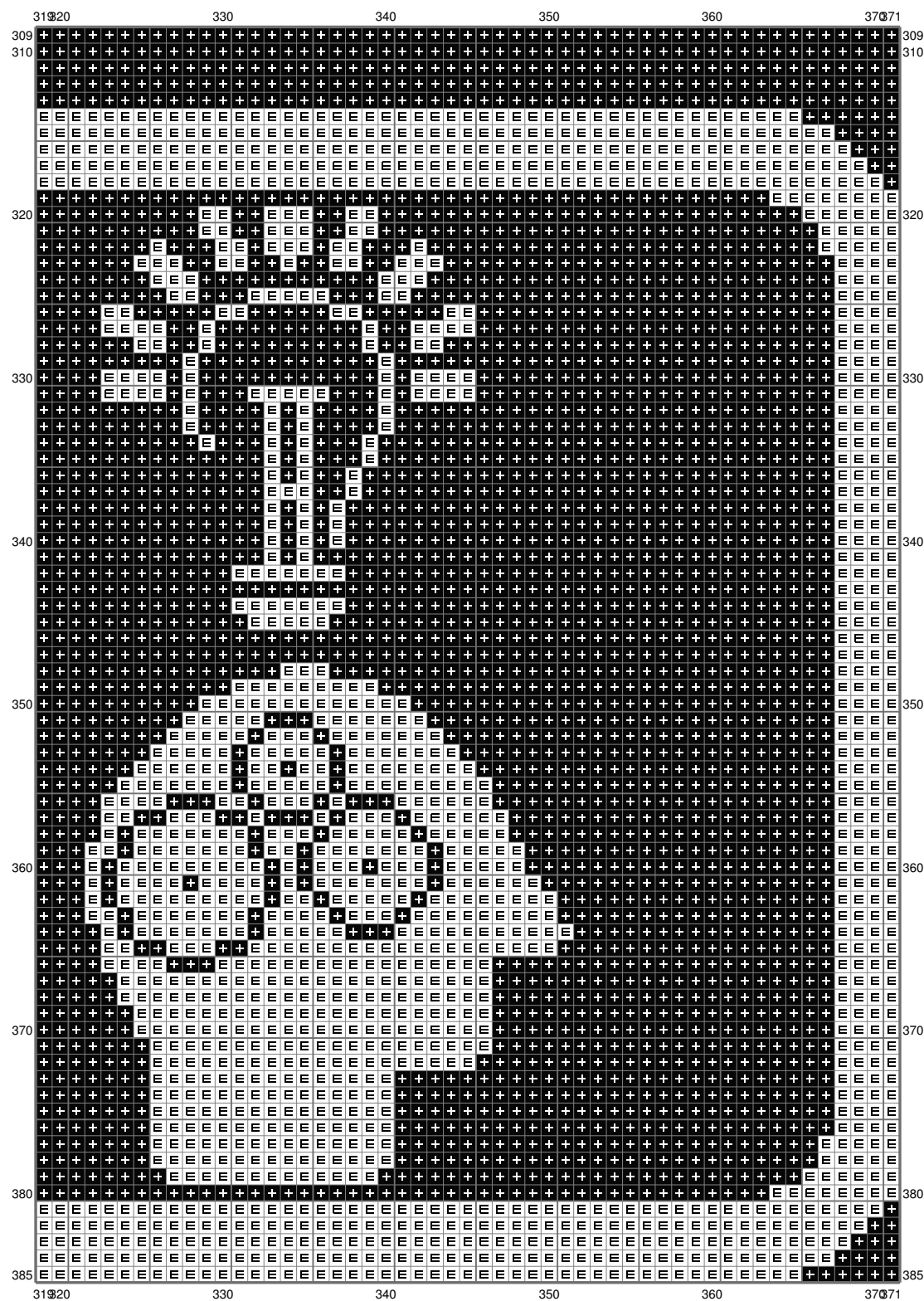


(This chart is printed using KG-Chart LE for Cross Stitch.)

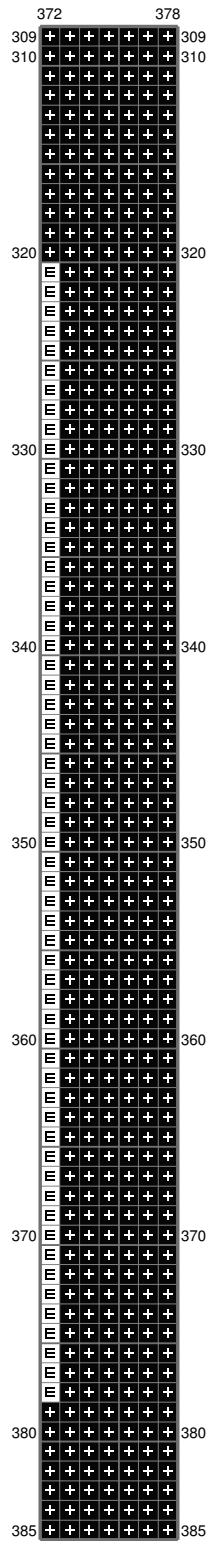
# Untitled



# Untitled



# Untitled



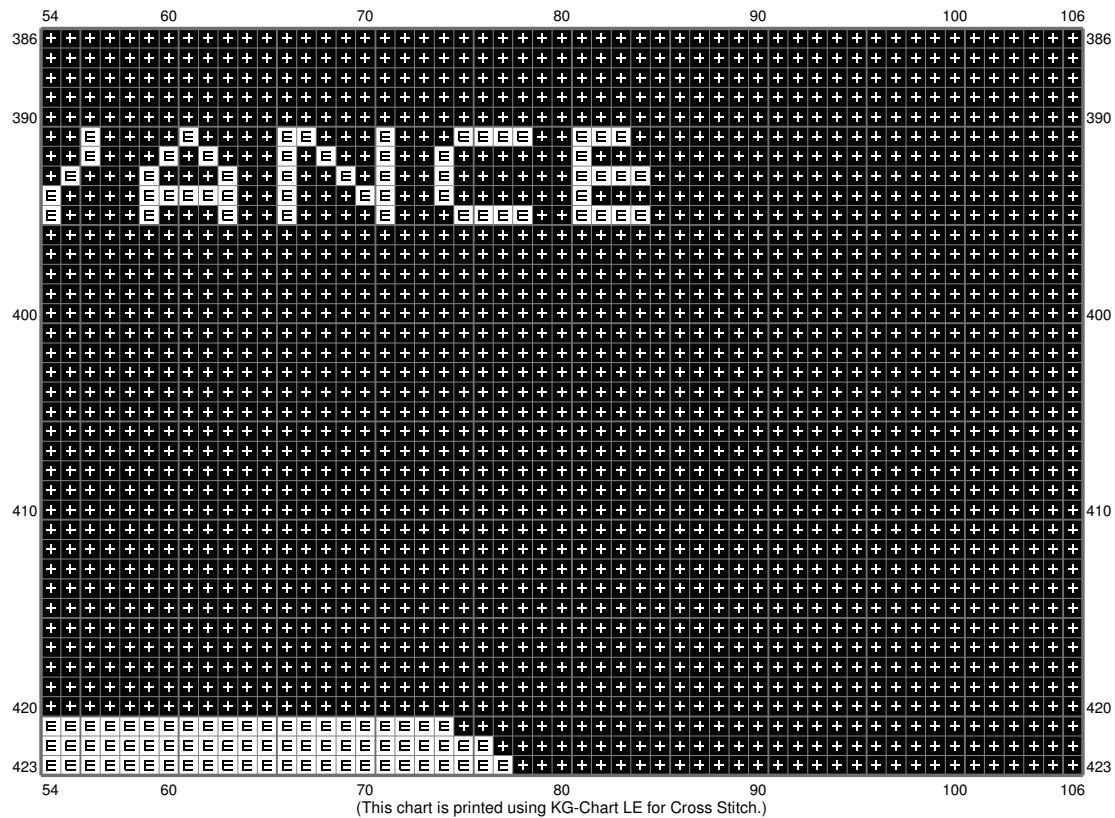
(This chart is printed using KG-Chart LE for Cross Stitch.)



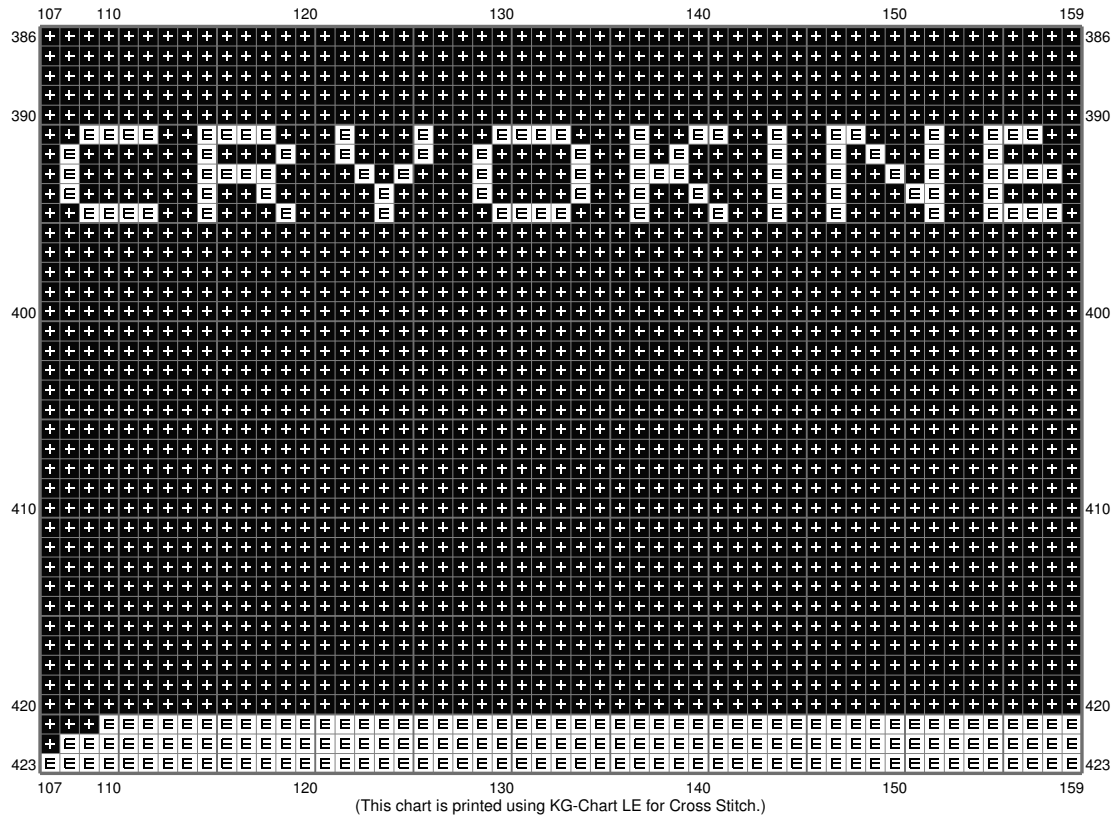
# Untitled



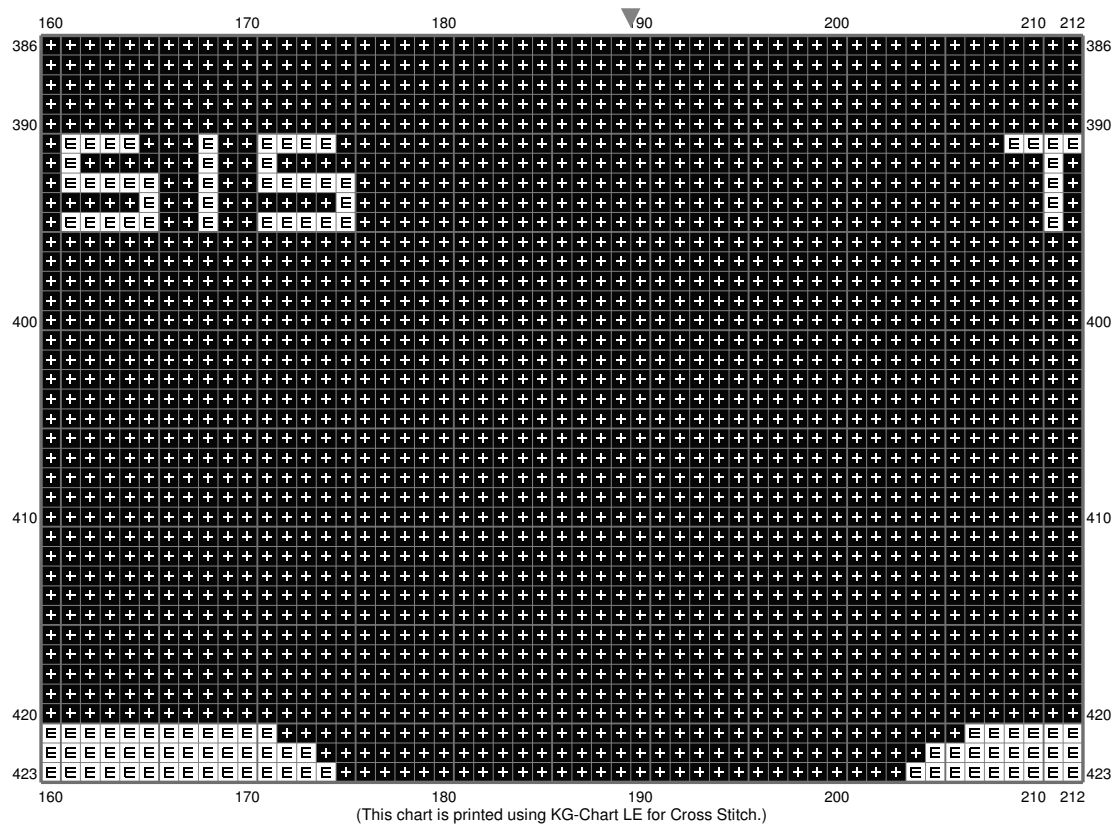
# Untitled



# Untitled



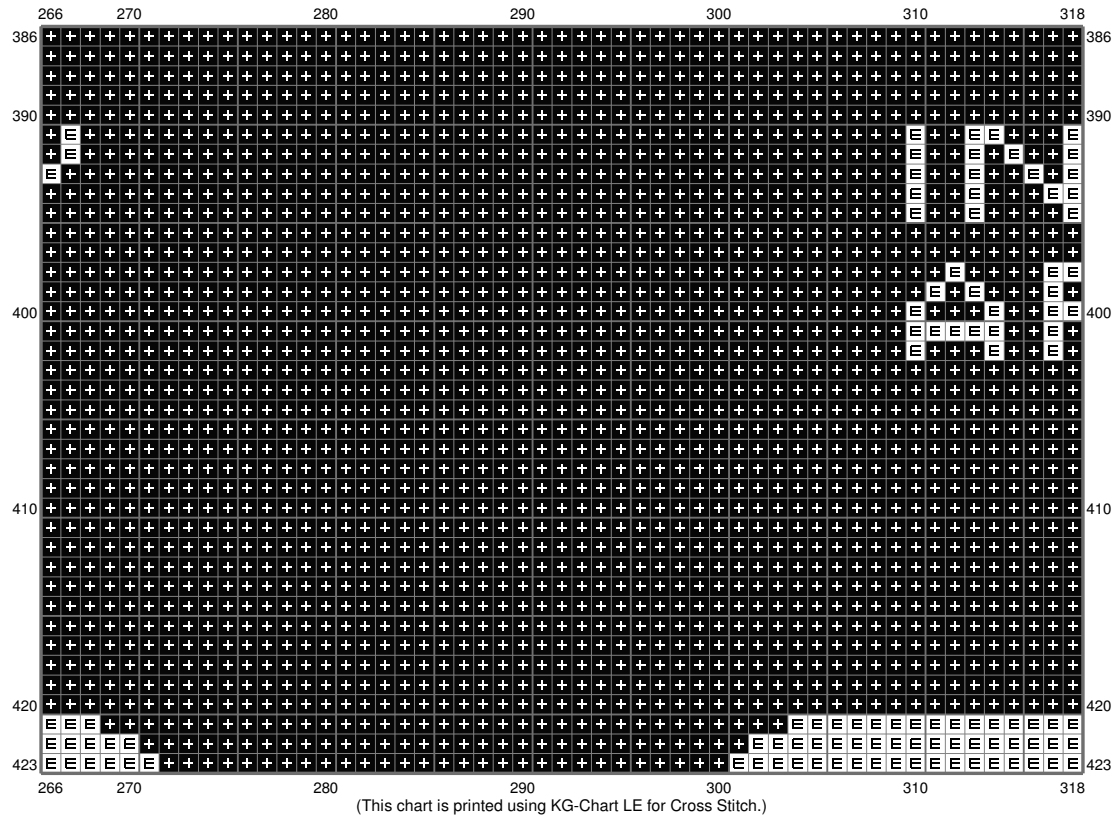
# Untitled



# Untitled



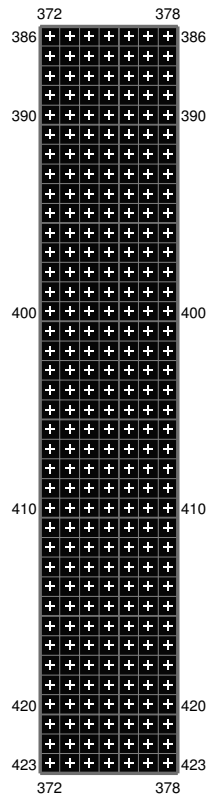
# Untitled



# Untitled



# Untitled



(This chart is printed using KG-Chart LE for Cross Stitch.)

Stitch Count: 378w x 423h

Finished Size: 68.58 cm x 76.74 cm (28 ct./inch)


Cloth: Aida

Cloth's Color: White

# of colors: 2 Colors

## Color Table (DMC)

### Cross Stitch

 310 (125351 ct)

 B5200 (34543 ct)