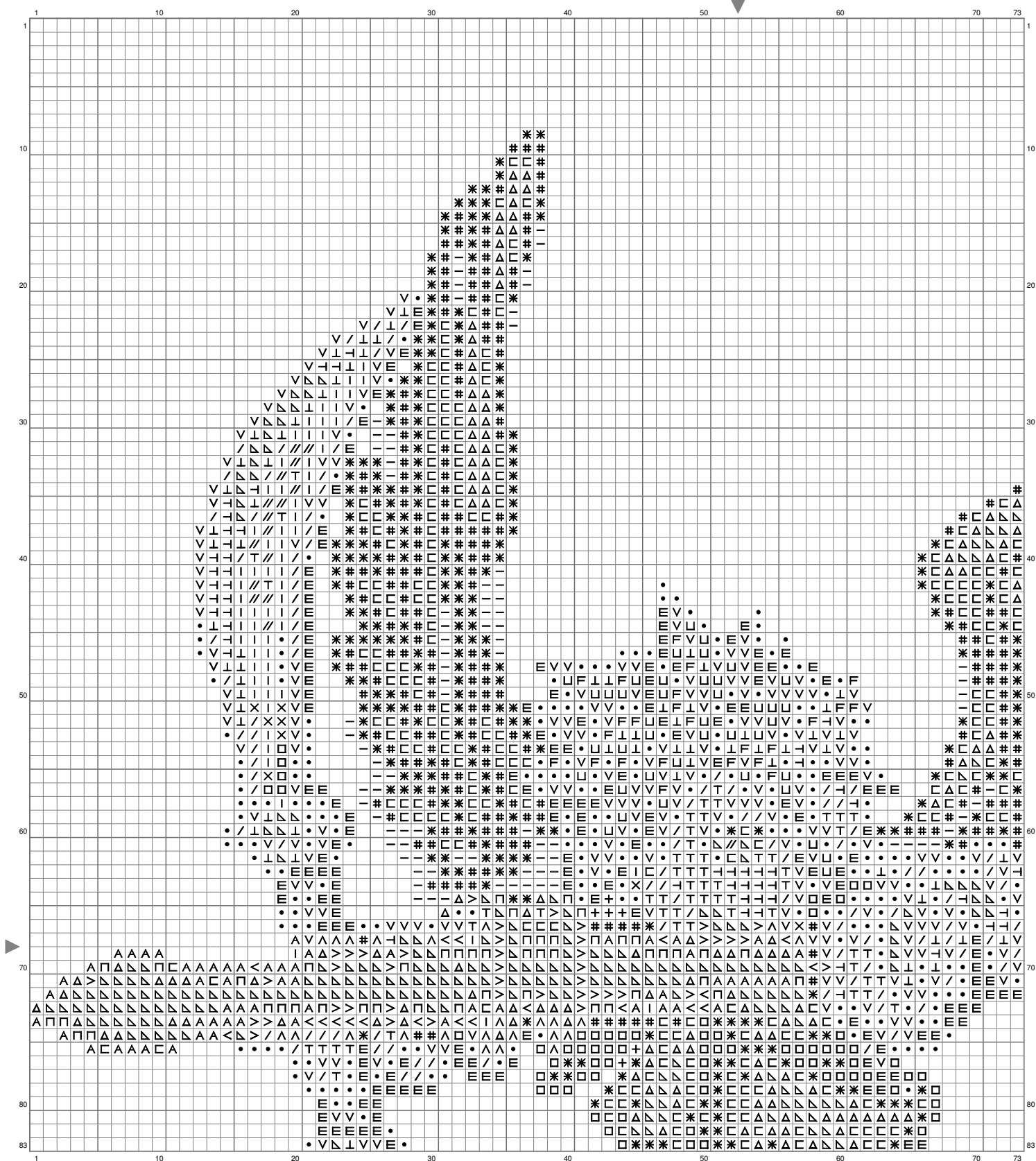
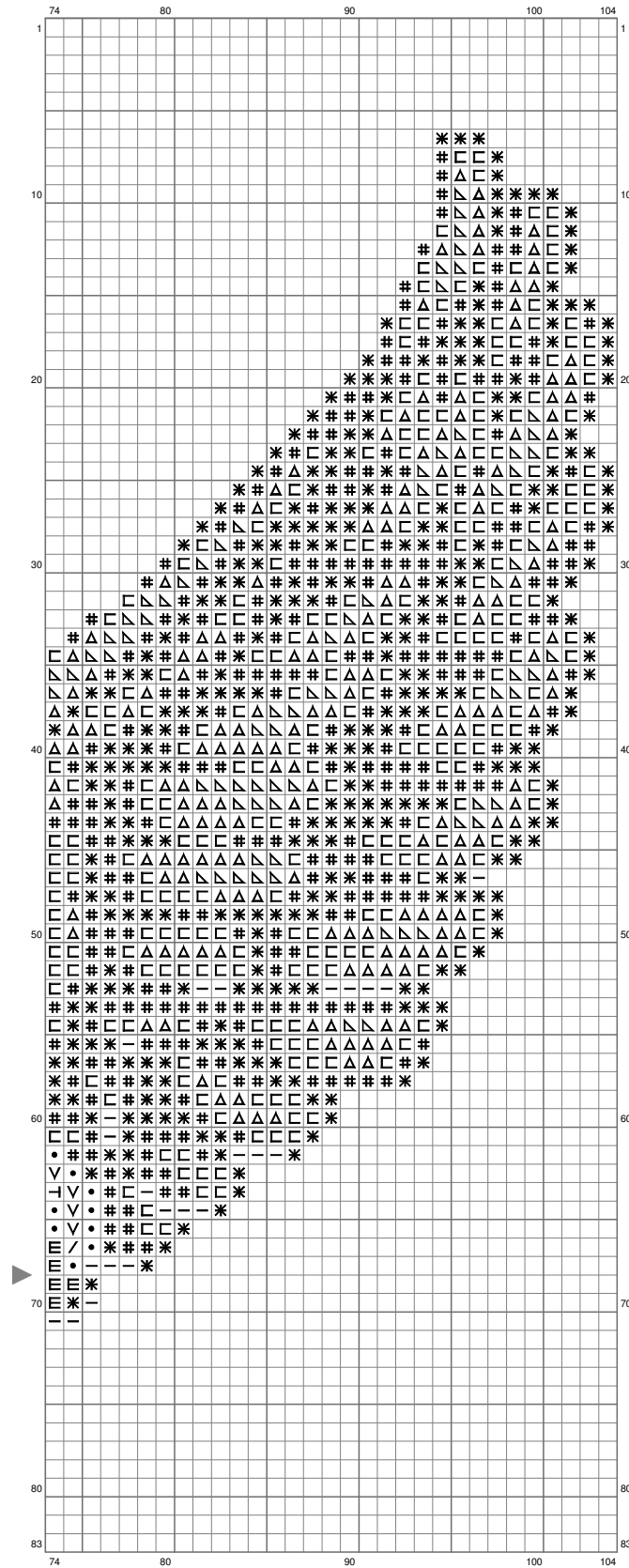


Pit

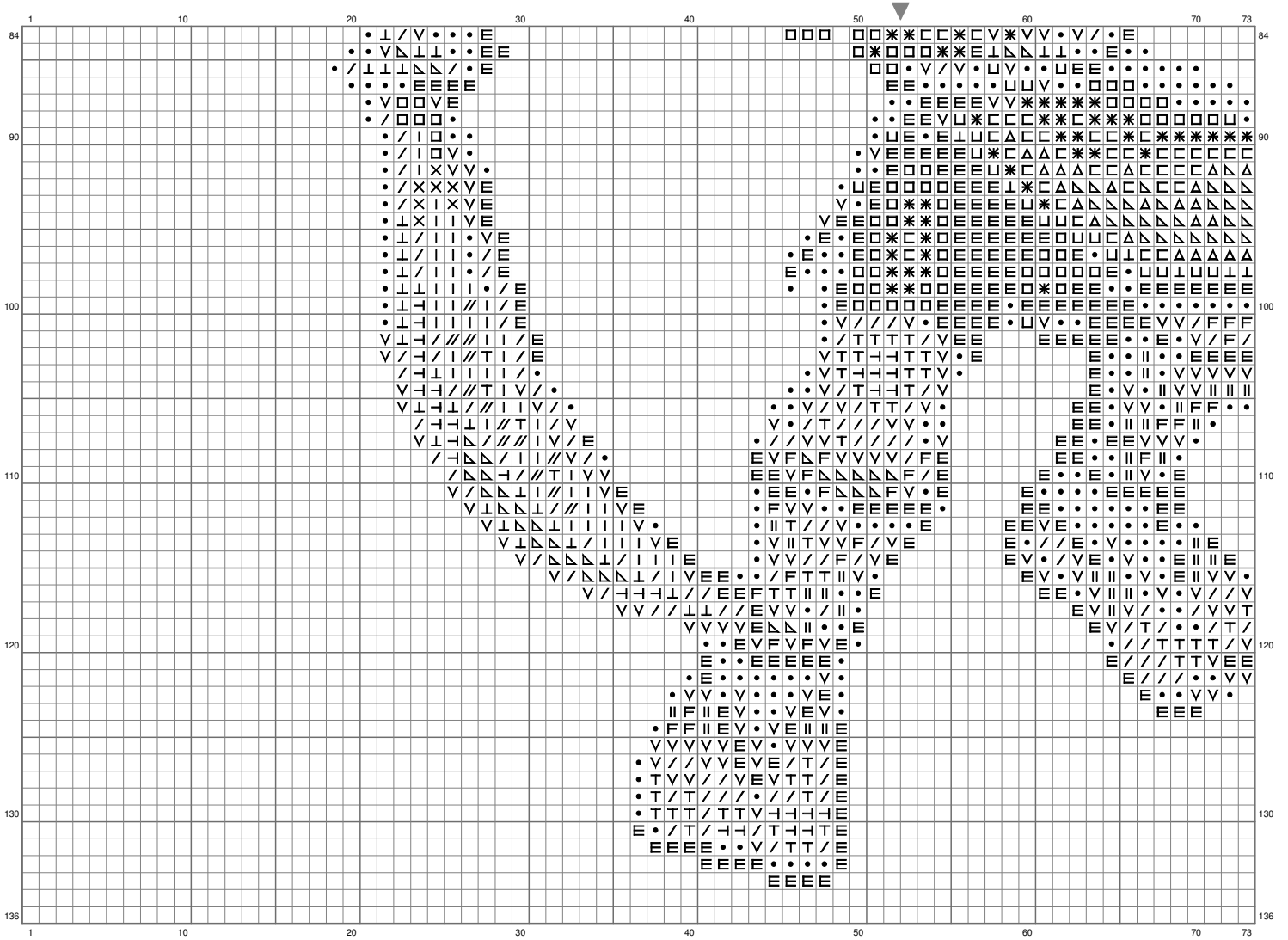


(This chart is printed using KG-Chart LE for Cross Stitch.)

Pit

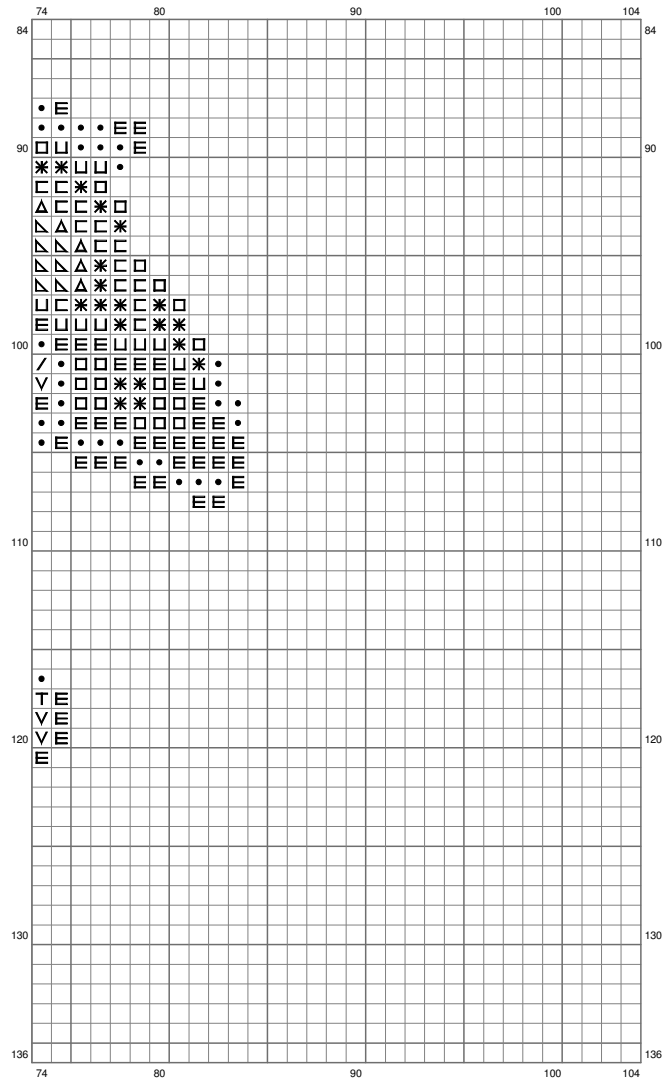


Pit



(This chart is printed using KG-Chart LE for Cross Stitch.)

Pit



(This chart is printed using KG-Chart LE for Cross Stitch.)

Stitch Count:104w x 136h

Cloth:Aida Cloth's Color:White

Finished Size:37.73 cm x 49.34 cm
(14 ct./inch)

Total 26 Colors

Color Table (DMC)

Cross Stitch

+	310	(6 ct)
E	939	(459 ct)
□	336	(155 ct)
—	3799	(108 ct)
X	3842	(15 ct)
*	413	(661 ct)
I	825	(120 ct)
#	3807	(517 ct)
●	550	(588 ct)
V	315	(390 ct)
^	3746	(24 ct)
	779	(34 ct)
<	340	(20 ct)
U	920	(75 ct)
/	356	(231 ct)
//	3845	(29 ct)
A	156	(60 ct)
C	794	(547 ct)
F	436	(50 ct)
T	3856	(111 ct)
L	3821	(110 ct)
H	744	(83 ct)
Π	160	(47 ct)
Δ	159	(347 ct)
>	819	(43 ct)
▢	BLANC	(371 ct)