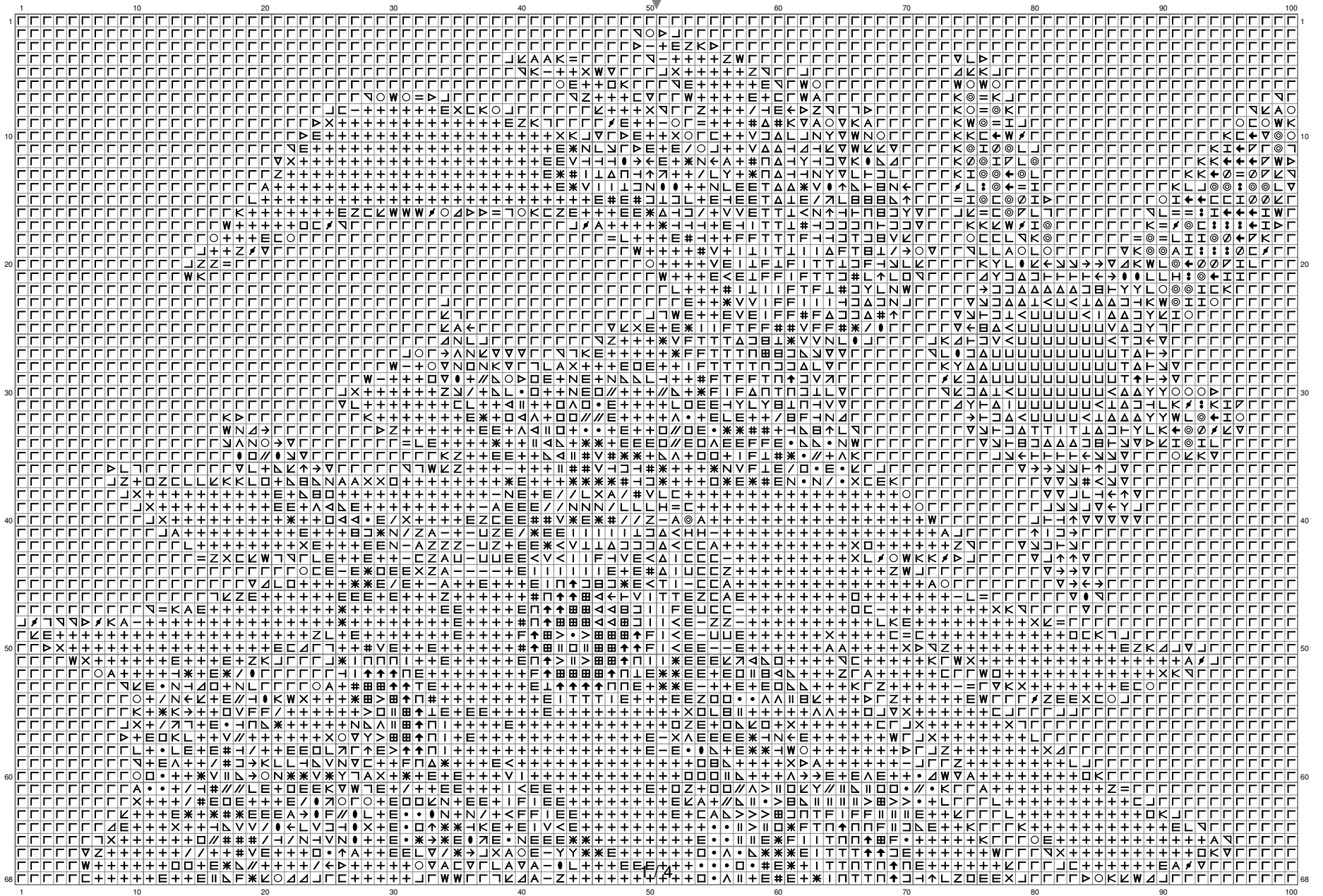
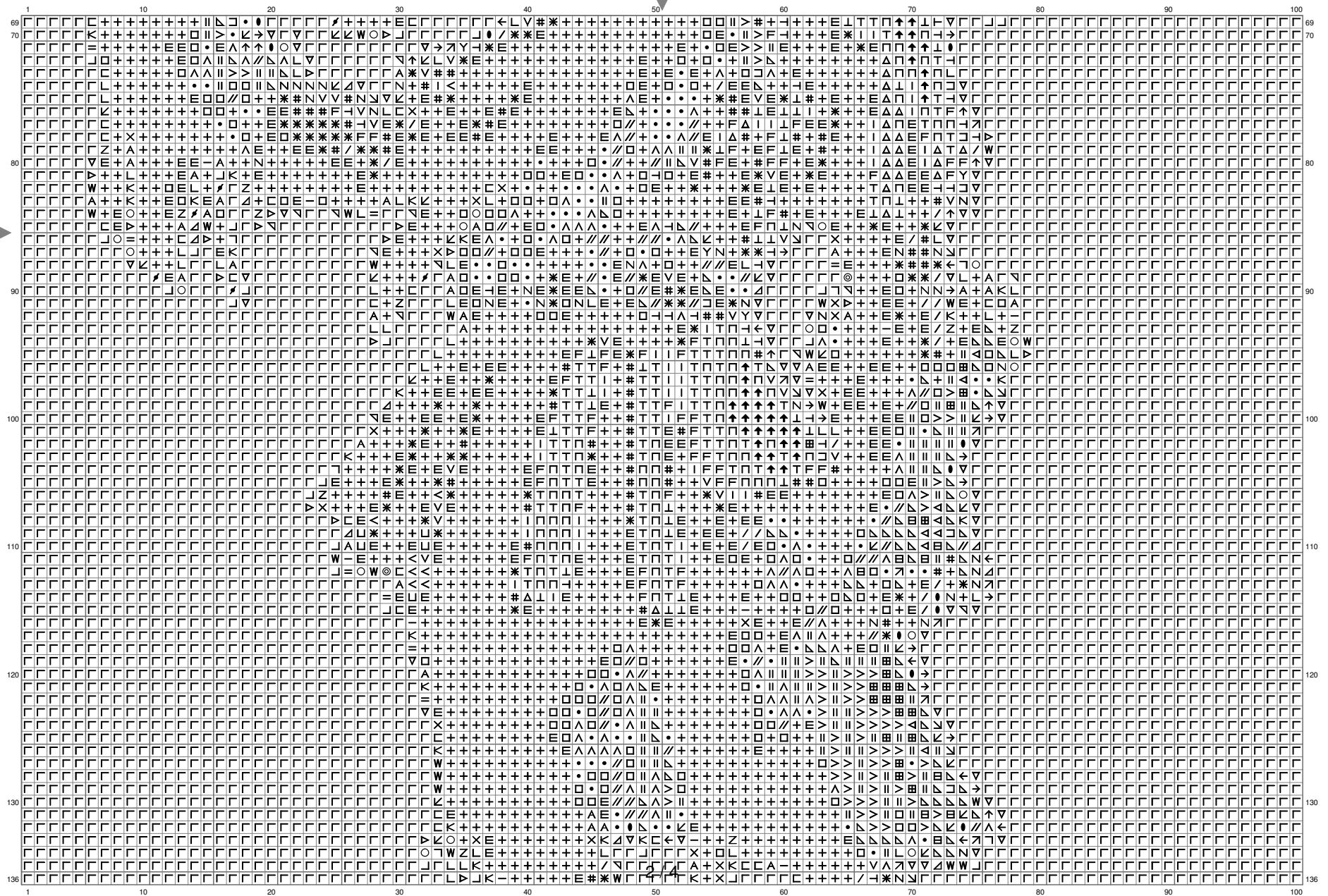


Skullkid



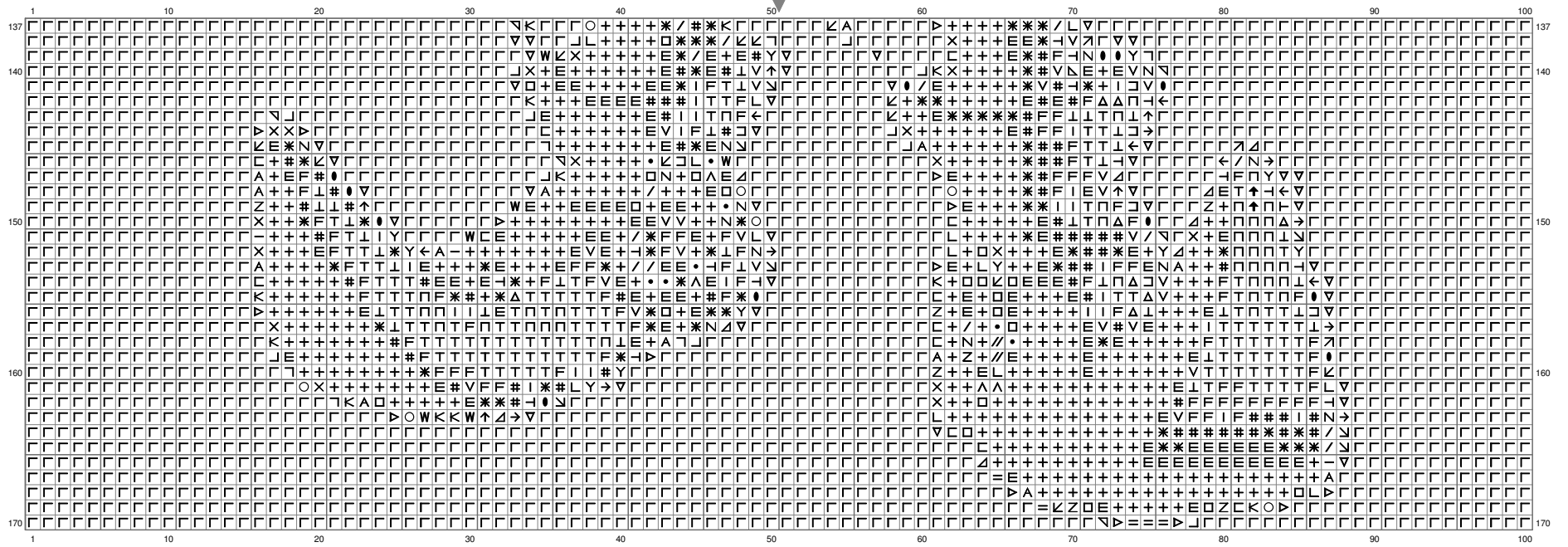
(This chart is printed using KG-Chart LE for Cross Stitch.)

Skullkid



(This chart is printed using KG-Chart LE for Cross Stitch.)

Skullkid



(This chart is printed using KG-Chart LE for Cross Stitch.)

Skullkid

Stitch Count:100w x 170h

Cloth:Aida Cloth's Color:White

Finished Size:36.28 cm x 61.68 cm (14 ct./inch)

Total 62 Colors

Color Table (DMC)

Cross Stitch

| | | |
|--|------|-----------|
| | 310 | (3202 ct) |
| | 939 | (676 ct) |
| | 934 | (256 ct) |
| | 823 | (56 ct) |
| | 3021 | (89 ct) |
| | 3371 | (253 ct) |
| | 815 | (142 ct) |
| | 938 | (195 ct) |
| | 936 | (168 ct) |
| | 898 | (94 ct) |
| | 937 | (103 ct) |
| | 730 | (128 ct) |
| | 814 | (37 ct) |
| | 550 | (80 ct) |
| | 3031 | (78 ct) |
| | 3799 | (73 ct) |
| | 3781 | (92 ct) |
| | 3011 | (75 ct) |
| | 535 | (101 ct) |
| | 317 | (96 ct) |

| | | |
|--|------|----------|
| | 300 | (189 ct) |
| | 918 | (258 ct) |
| | 780 | (103 ct) |
| | 610 | (96 ct) |
| | 975 | (161 ct) |
| | 400 | (91 ct) |
| | 732 | (82 ct) |
| | 3012 | (127 ct) |
| | 640 | (147 ct) |
| | 522 | (87 ct) |
| | 3853 | (76 ct) |
| | 3863 | (84 ct) |
| | 3820 | (52 ct) |
| | 422 | (35 ct) |
| | 414 | (4 ct) |
| | 503 | (28 ct) |
| | 3022 | (121 ct) |
| | 523 | (80 ct) |
| | 612 | (42 ct) |
| | 3782 | (51 ct) |
| | 931 | (11 ct) |

| | | |
|--|-------|-----------|
| | 3817 | (26 ct) |
| | 3023 | (87 ct) |
| | 927 | (38 ct) |
| | 3752 | (12 ct) |
| | 928 | (41 ct) |
| | 613 | (32 ct) |
| | 3779 | (30 ct) |
| | 165 | (24 ct) |
| | 3033 | (42 ct) |
| | 3024 | (35 ct) |
| | 644 | (21 ct) |
| | 543 | (35 ct) |
| | 3753 | (20 ct) |
| | 3072 | (66 ct) |
| | 762 | (61 ct) |
| | 3865 | (107 ct) |
| | 3774 | (40 ct) |
| | 712 | (52 ct) |
| | BLANC | (188 ct) |
| | 3756 | (8 ct) |
| | B5200 | (8116 ct) |