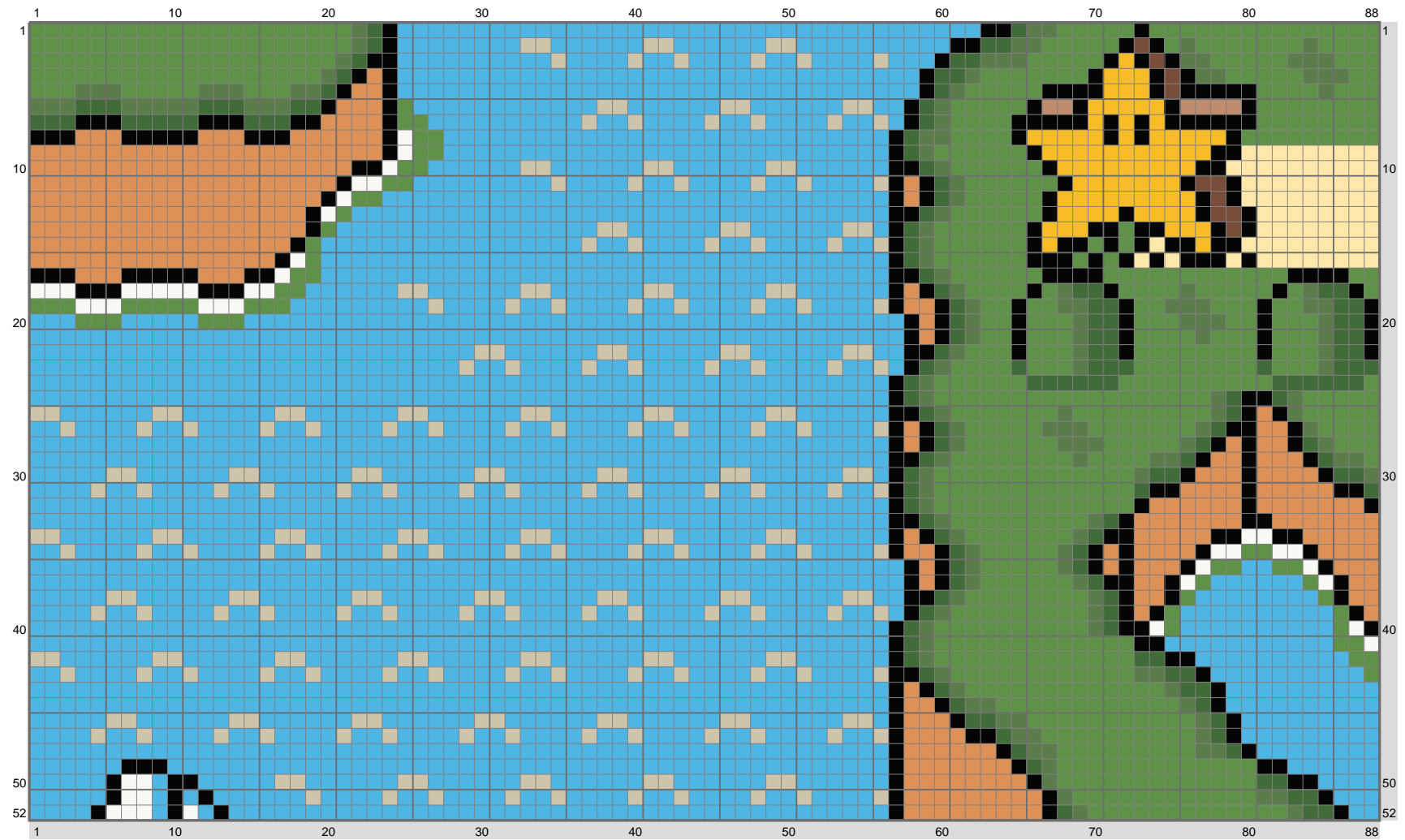
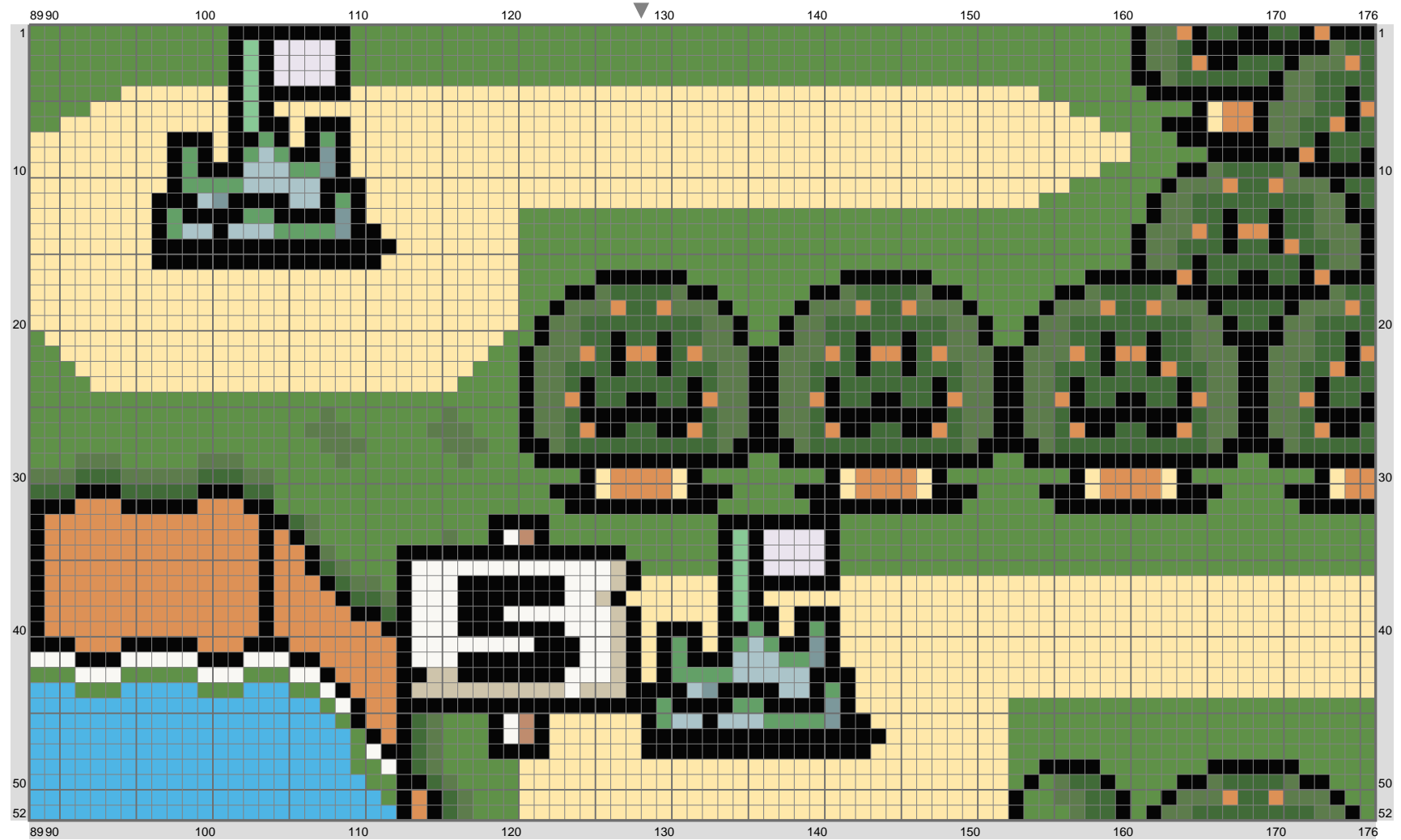


part4

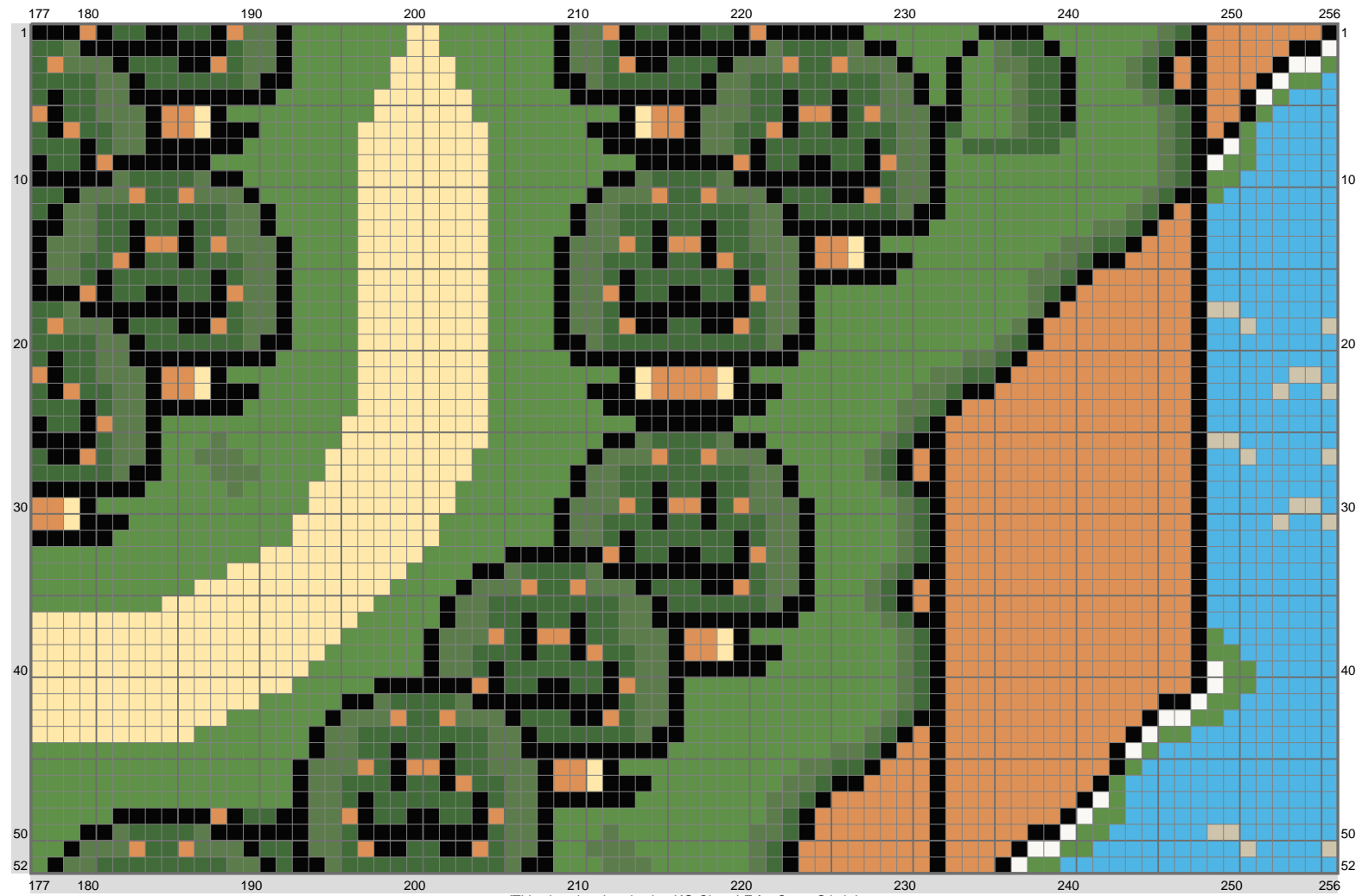


(This chart is printed using KG-Chart LE for Cross Stitch.)

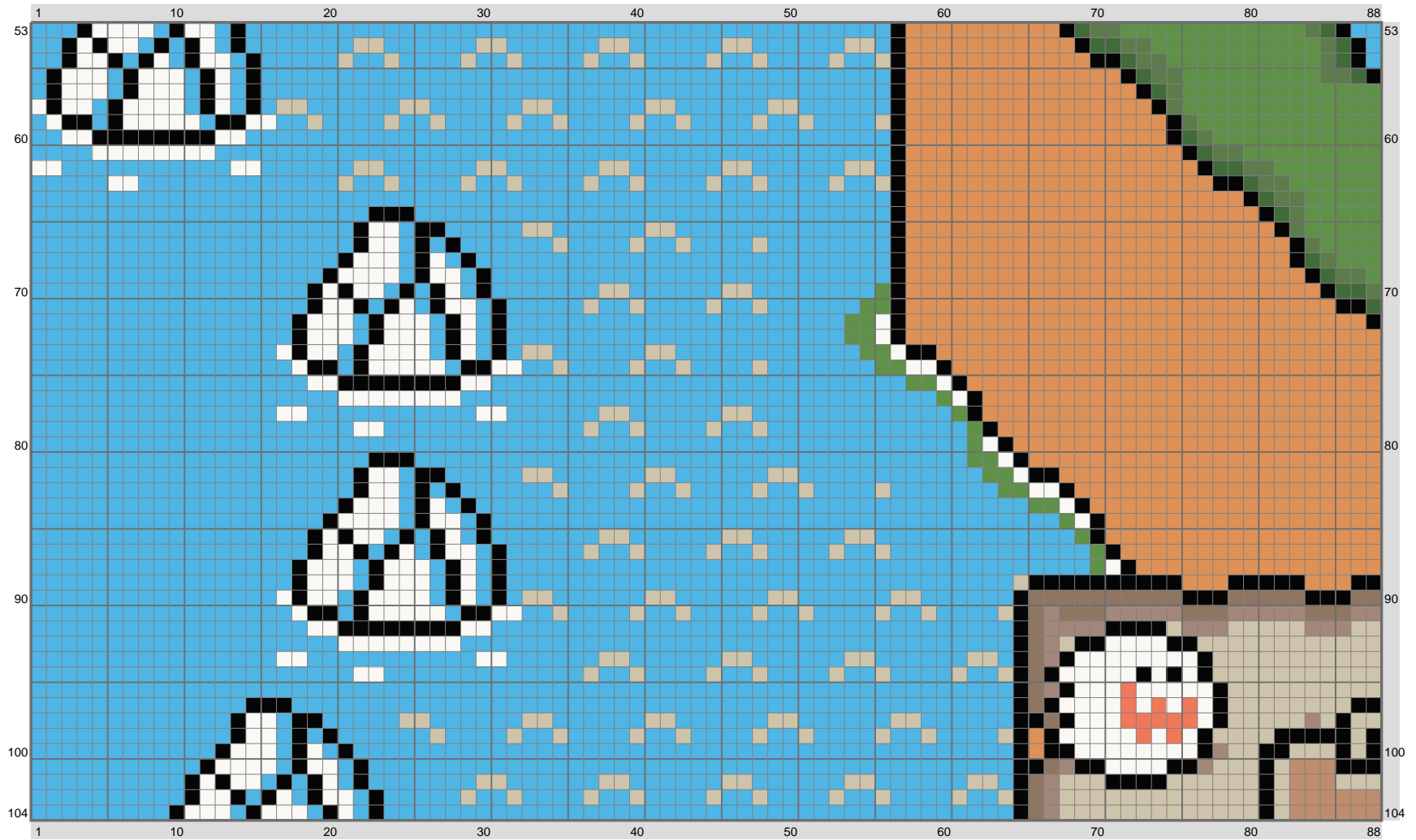
part4



part4

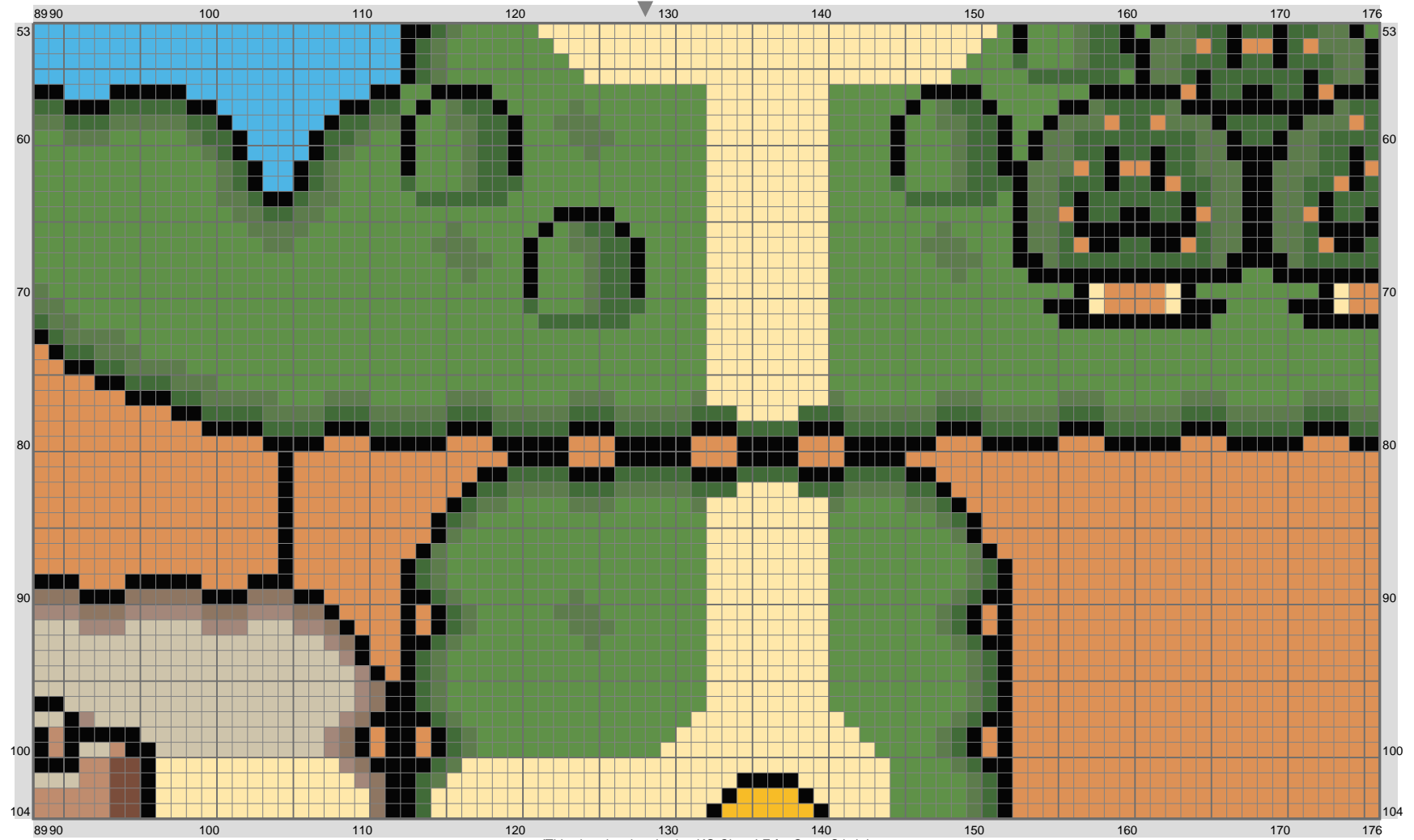


part4

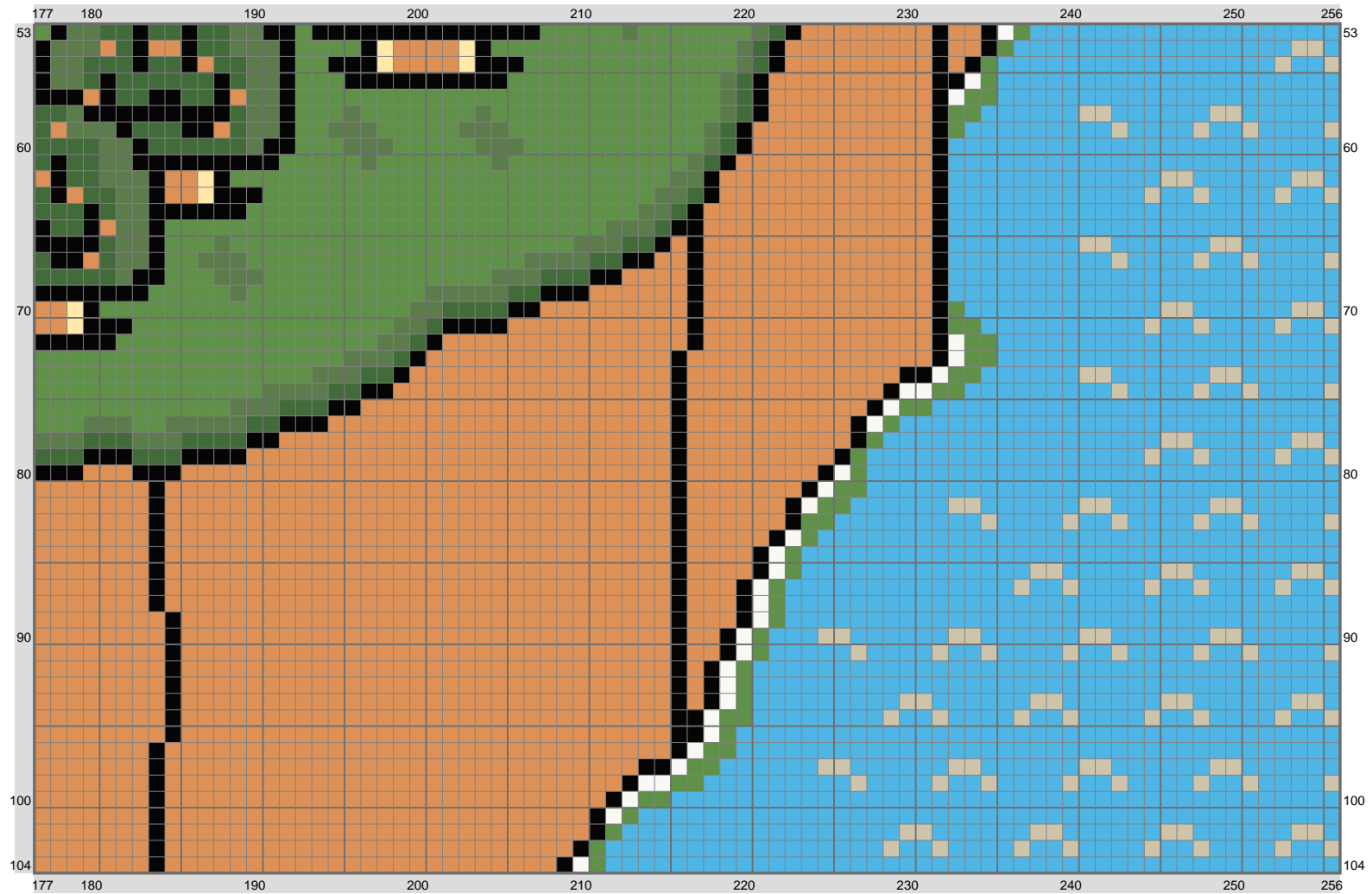


(This chart is printed using KG-Chart LE for Cross Stitch.)

part4



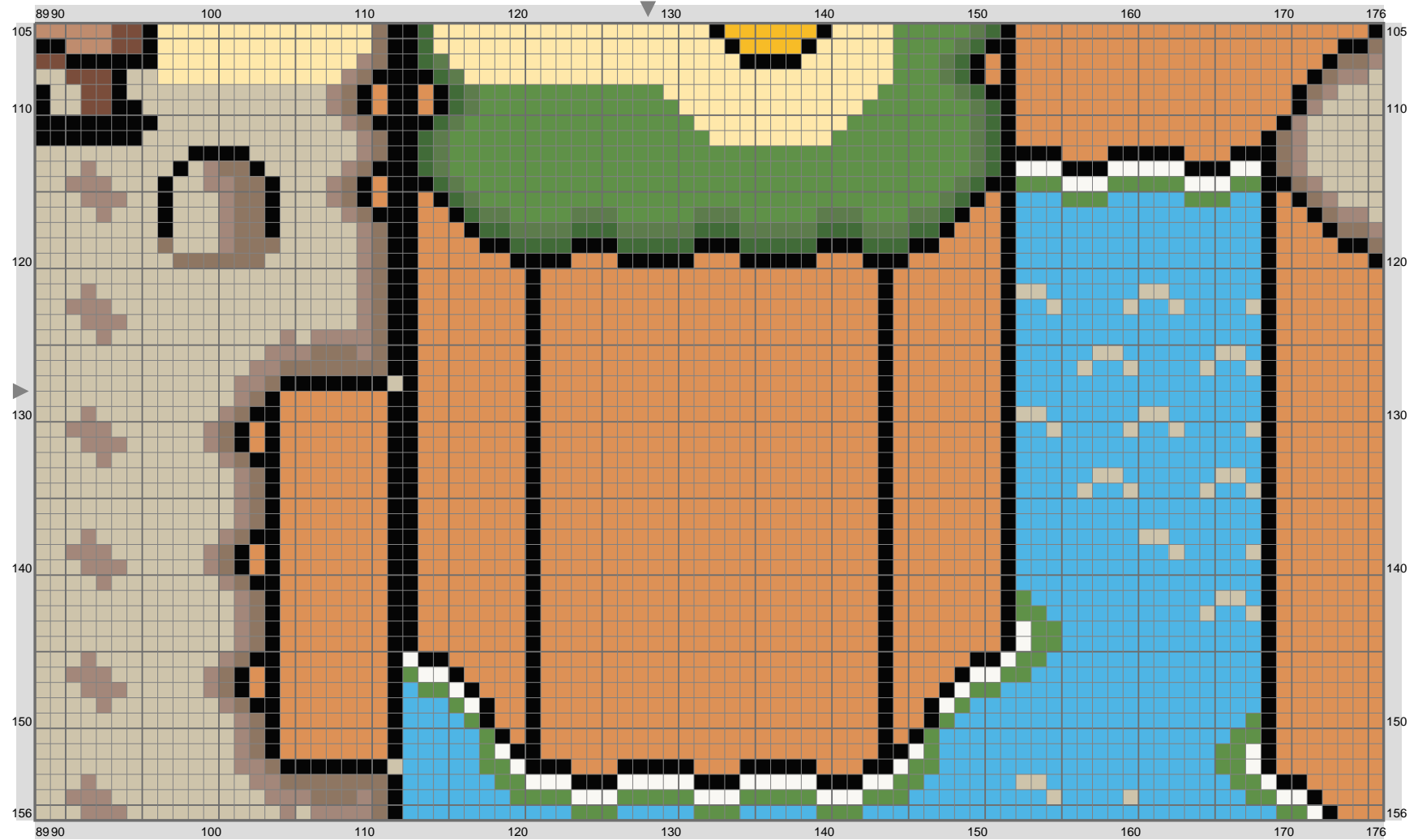
part4



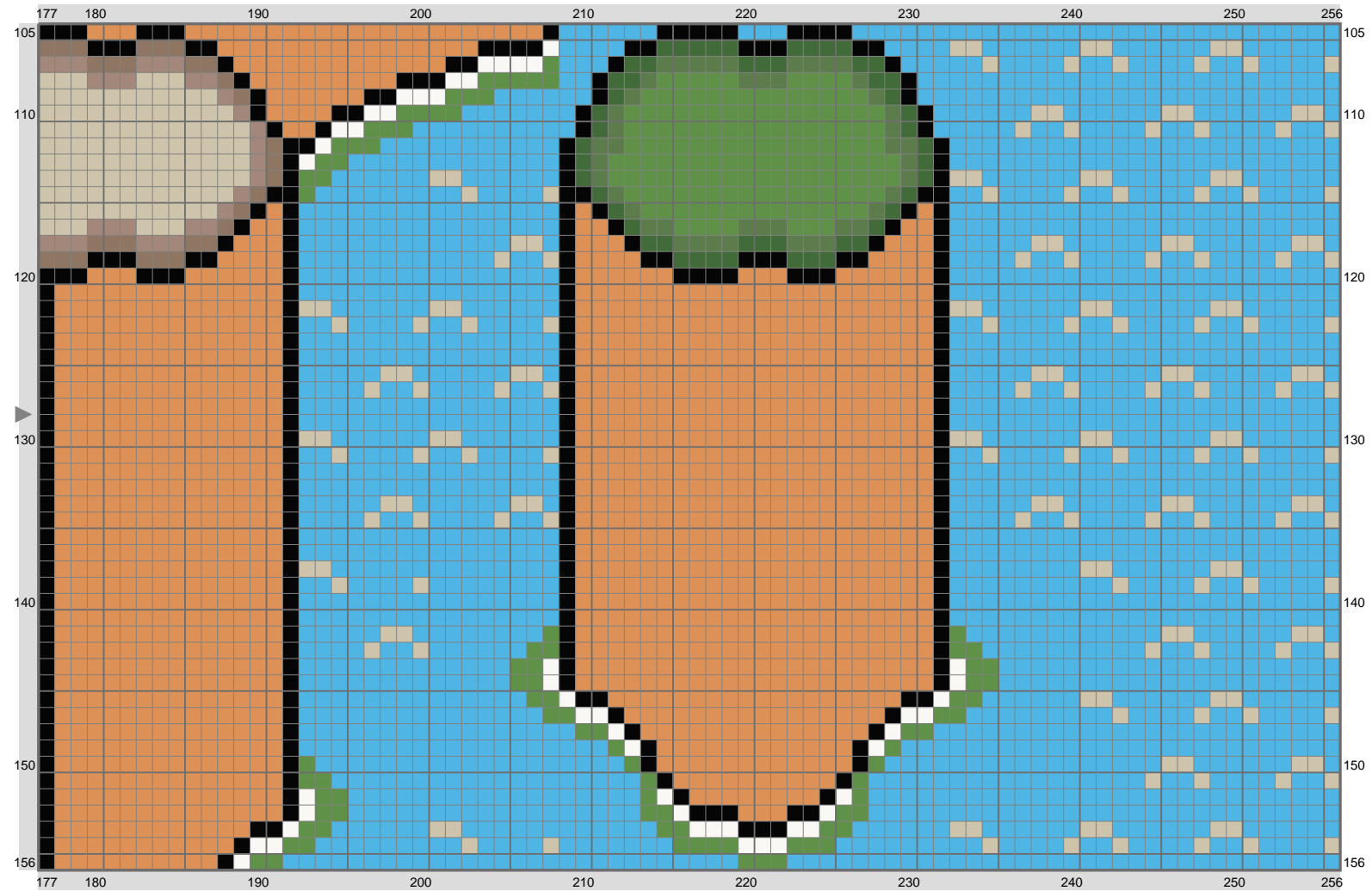
part4



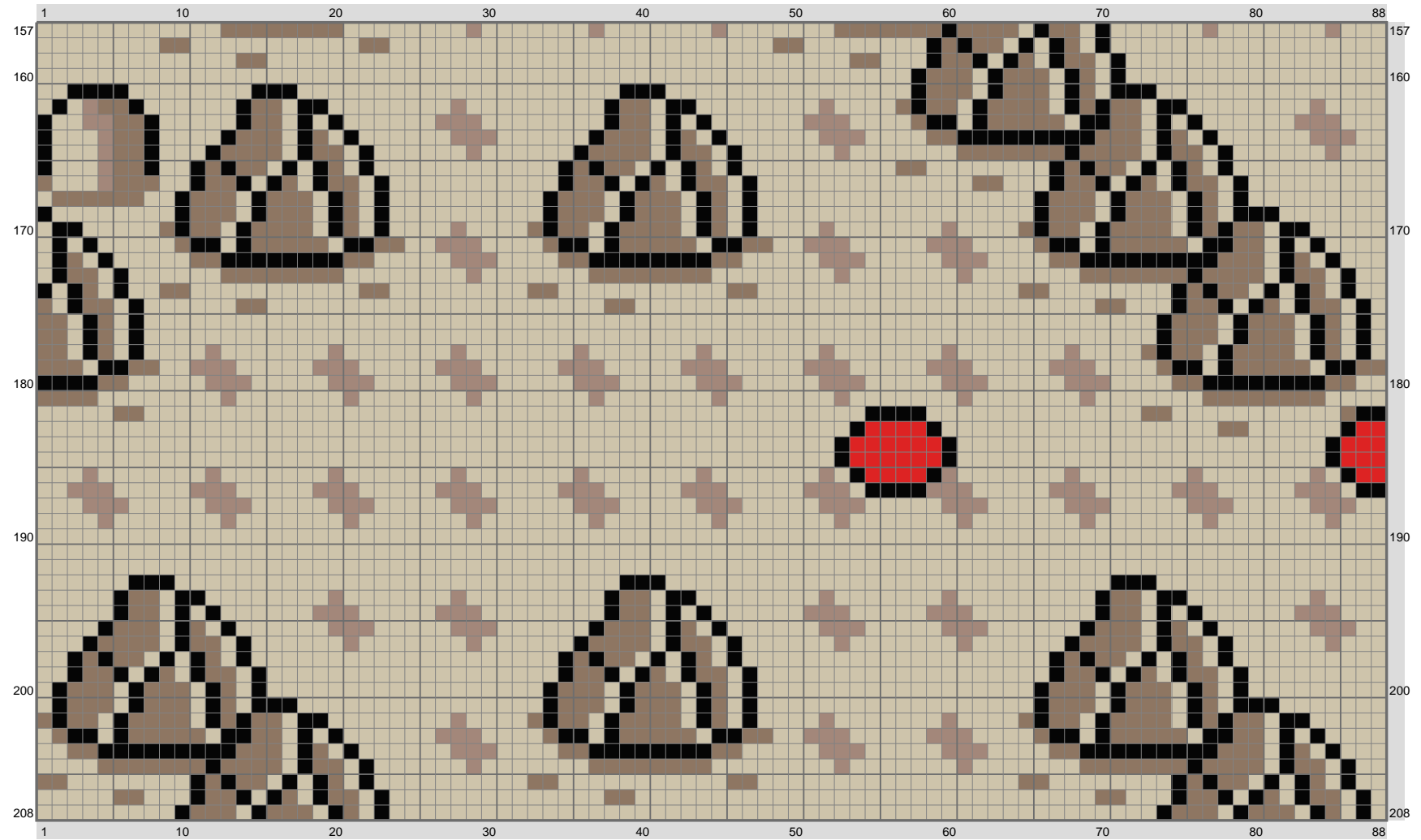
part4



part4

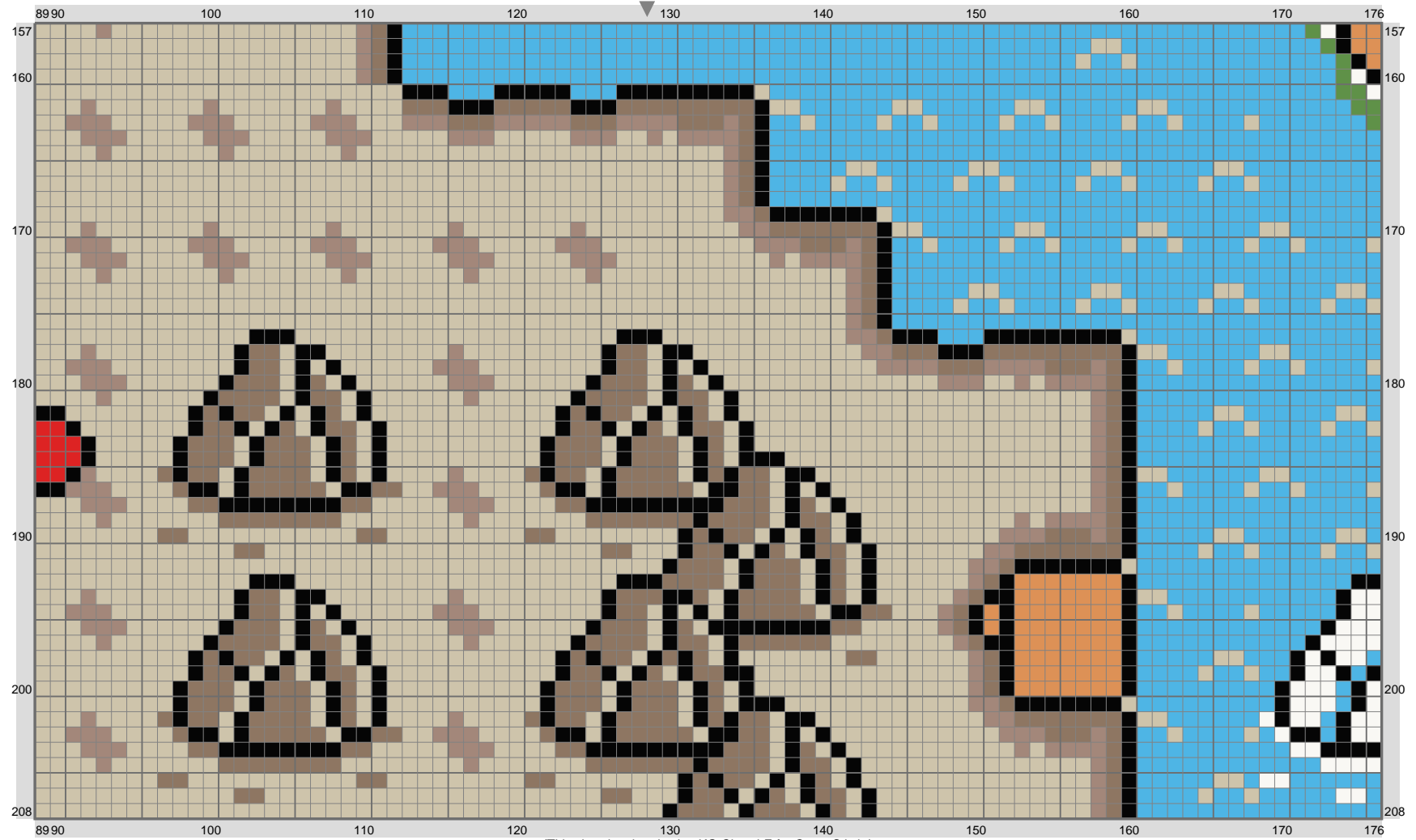


part4



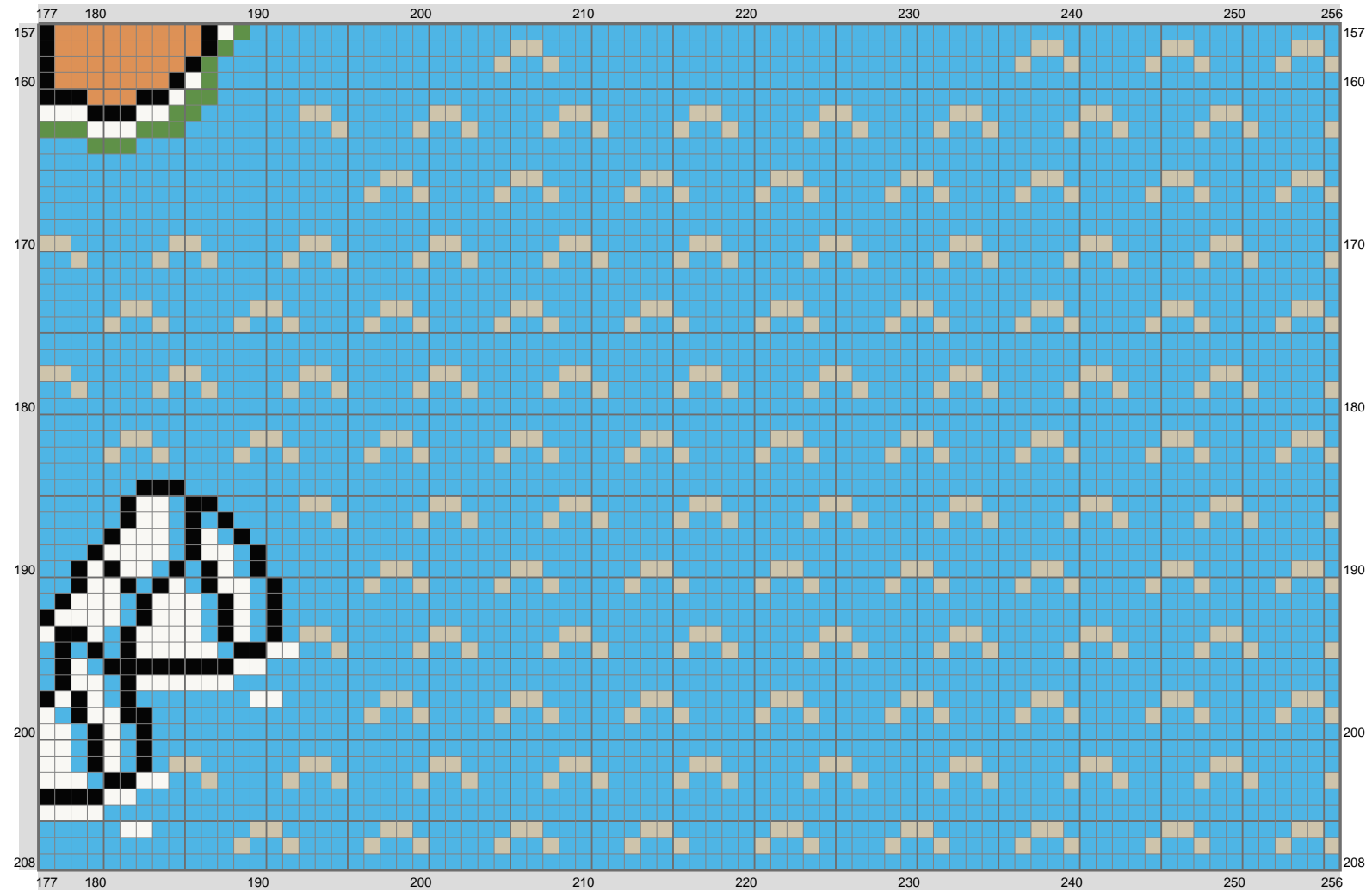
(This chart is printed using KG-Chart LE for Cross Stitch.)

part4



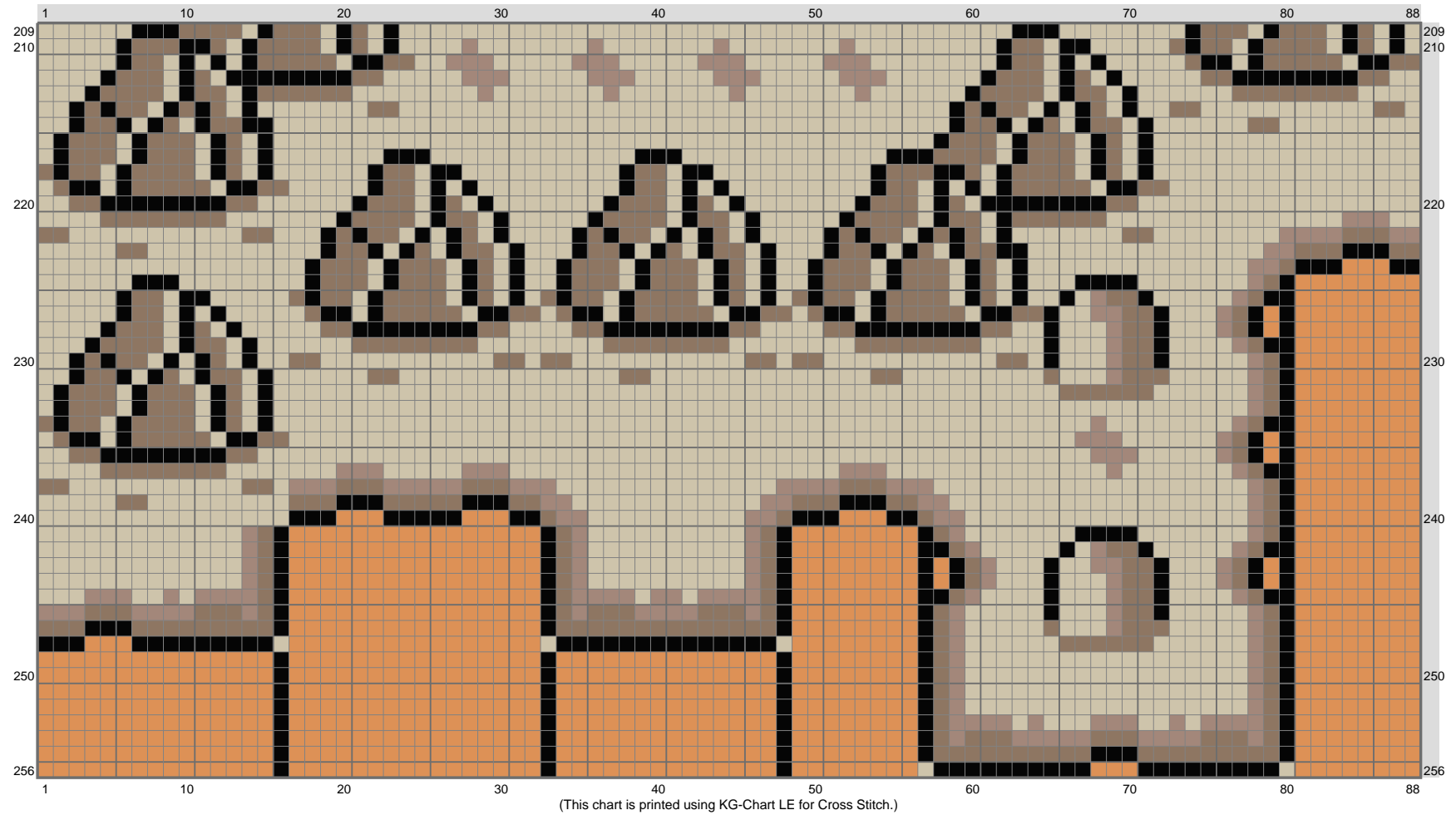
(This chart is printed using KG-Chart LE for Cross Stitch.)

part4

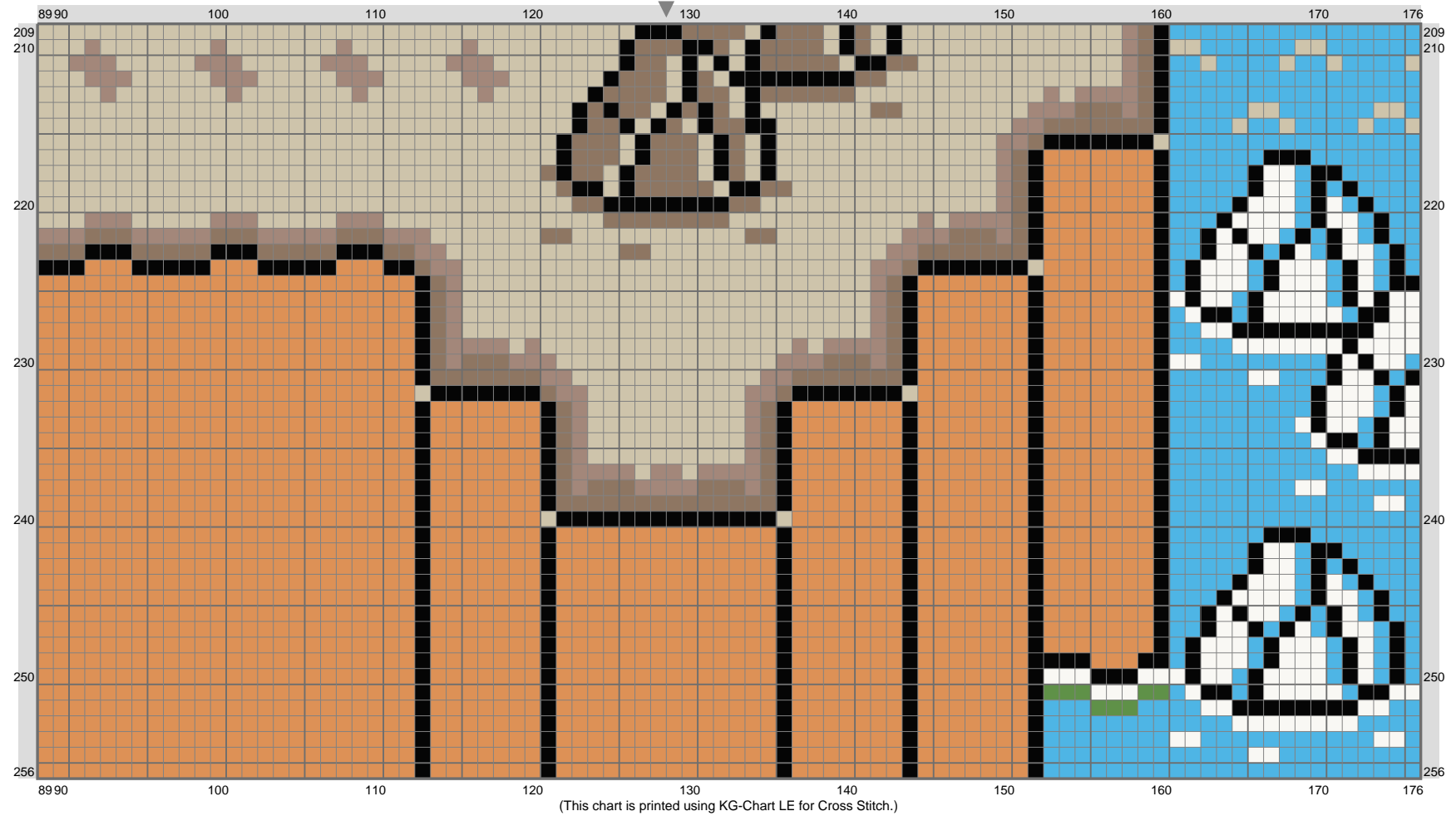


(This chart is printed using KG-Chart LE for Cross Stitch.)

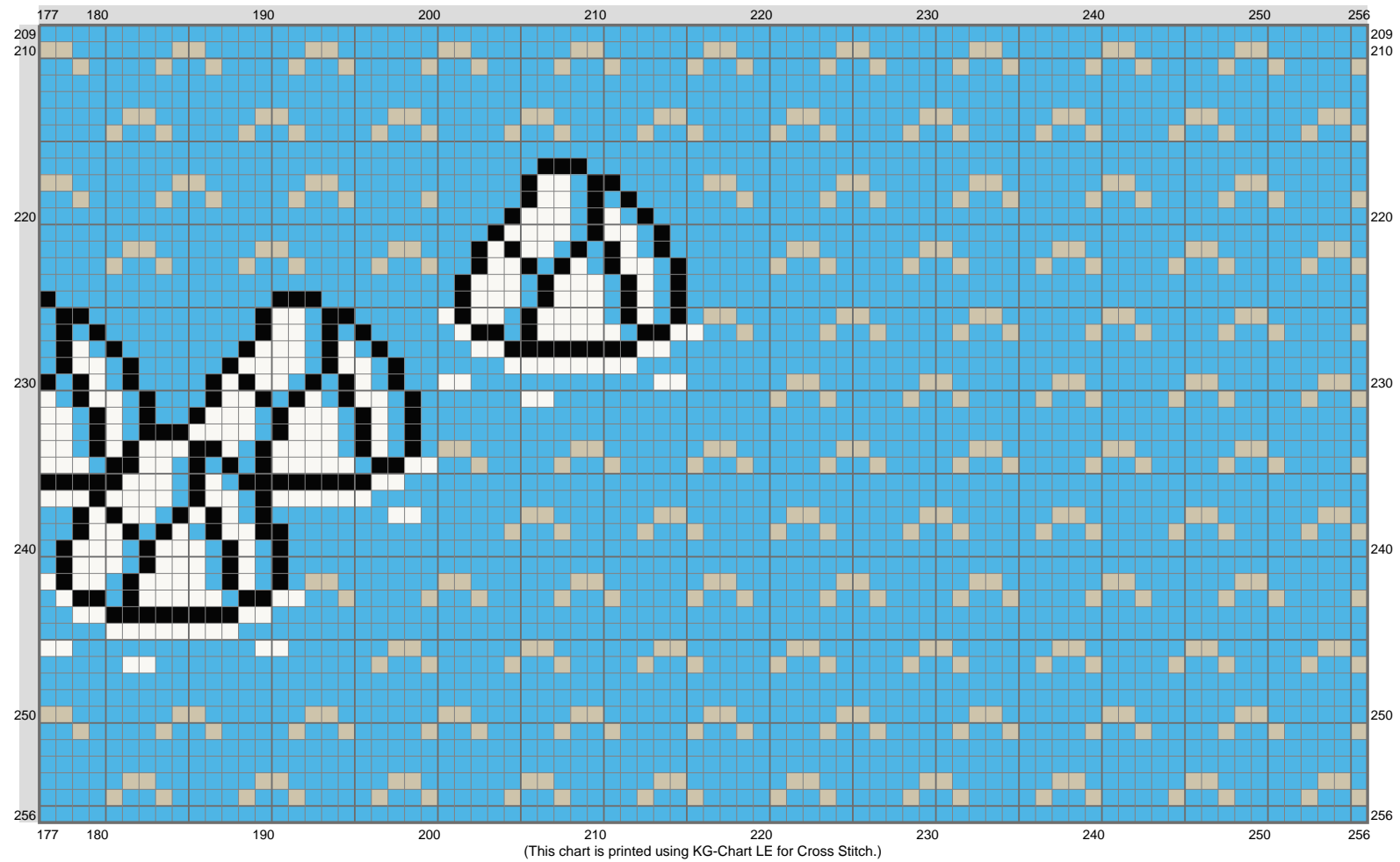
part4



part4



part4



part4

Stitch Count: 256w x 256h

Finished Size: 72.24 cm x 72.24 cm (18 ct./inch)












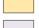
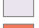









Cloth: Aida

Cloth's Color: White

of colors: 22 Colors

Color Table (DMC)

Cross Stitch

	167	(10328 ct)		3863	(74 ct)
	310	(6556 ct)		3865	(1229 ct)
	349	(40 ct)		702	(42 ct)
	433	(43 ct)			
	524	(12751 ct)			
	611	(1395 ct)			
	701	(34 ct)			
	744	(2569 ct)			
	762	(24 ct)			
	922	(11 ct)			
	926	(10 ct)			
	932	(34 ct)			
	954	(56 ct)			
	972	(98 ct)			
	986	(1631 ct)			
	987	(1410 ct)			
	988	(5814 ct)			
	3790	(2775 ct)			
	3845	(18612 ct)			