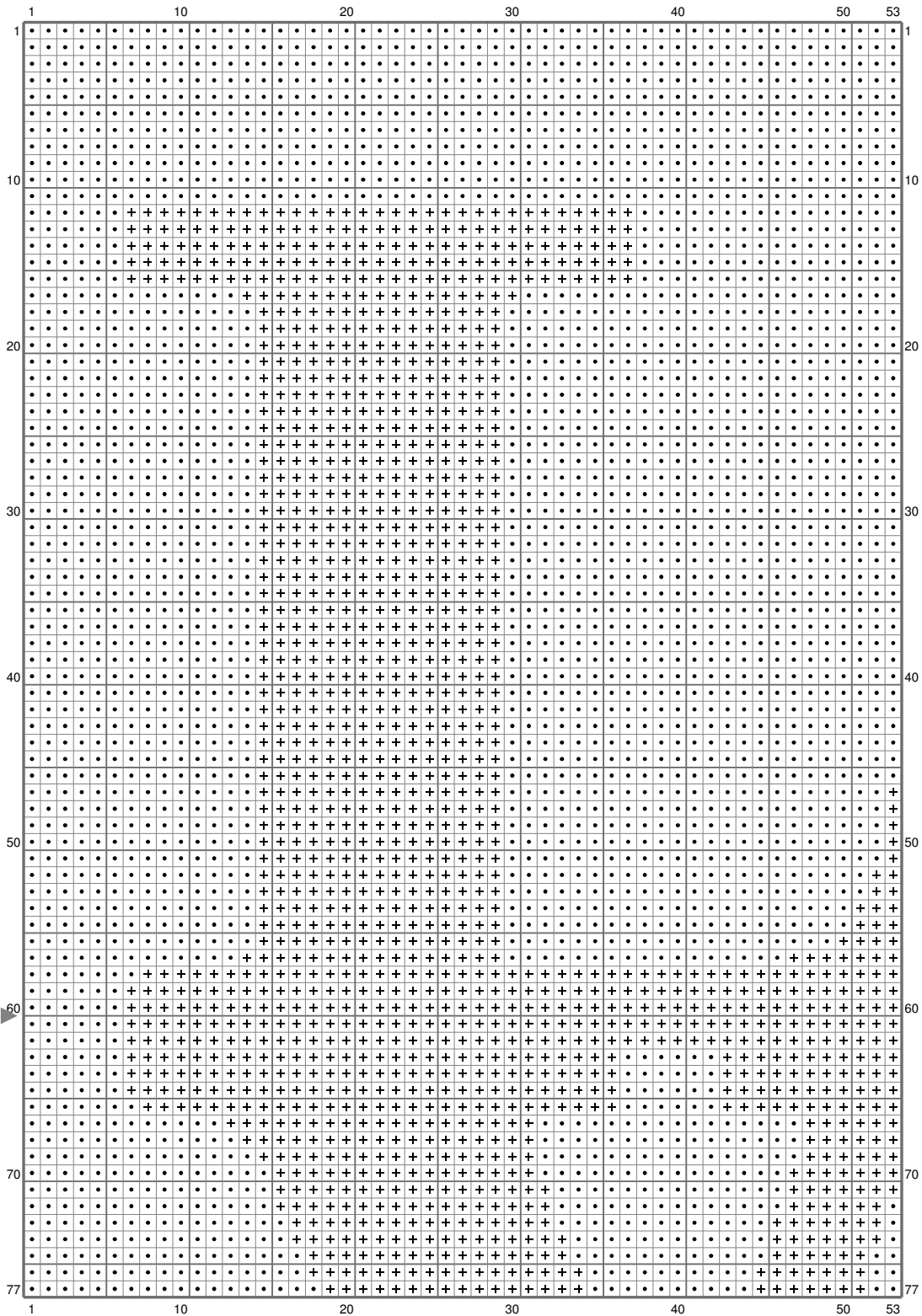
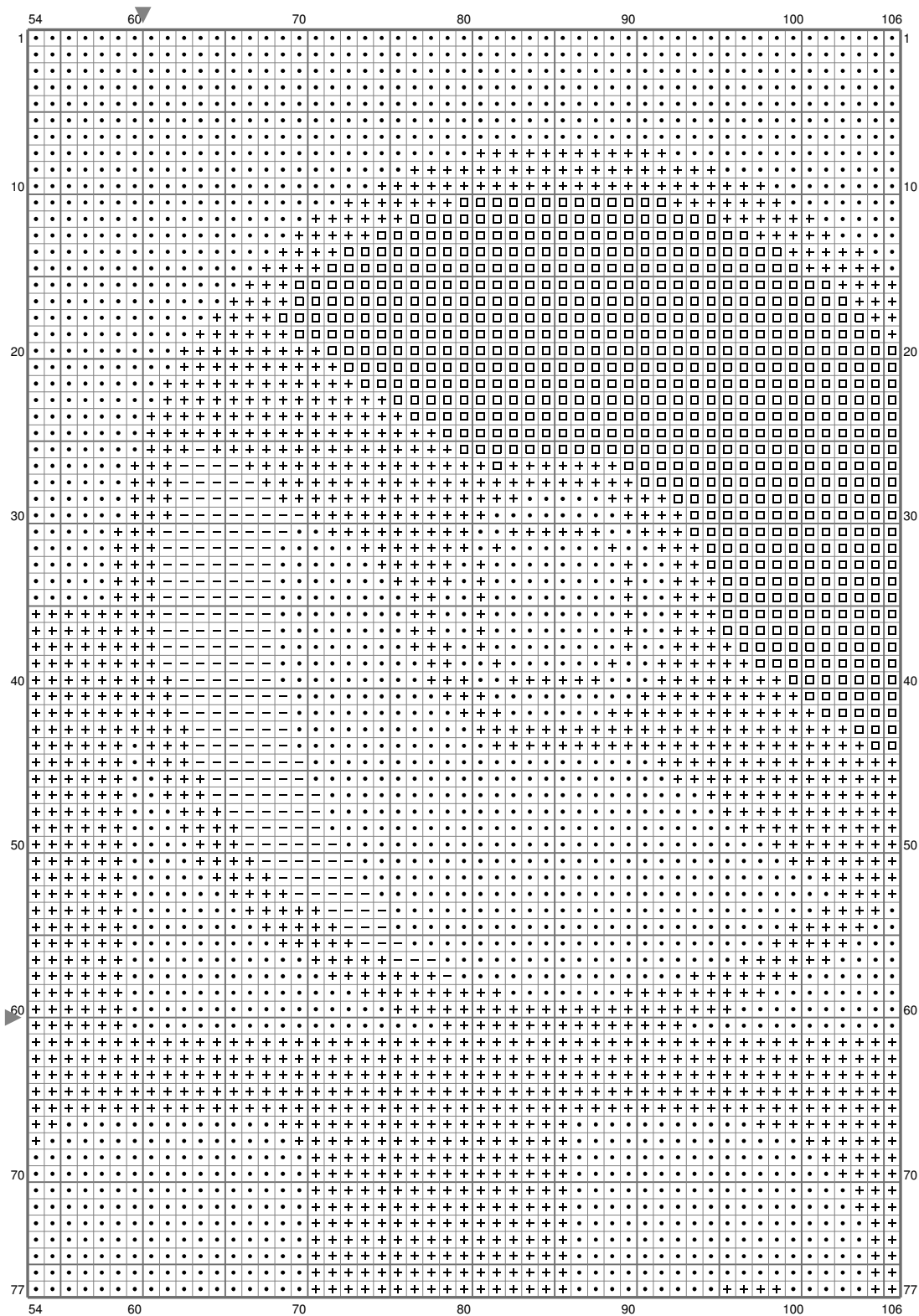


Untitled



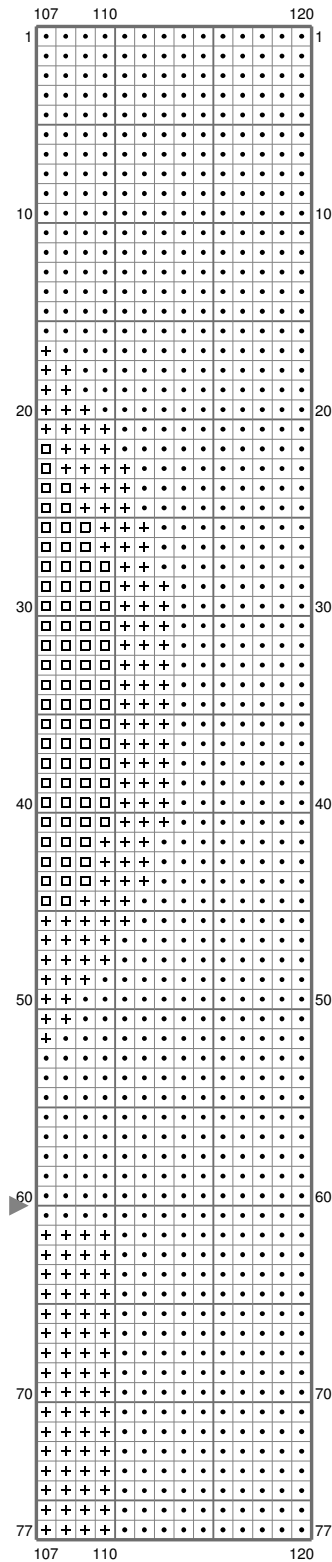
(This chart is printed using KG-Chart LE for Cross Stitch.)

Untitled



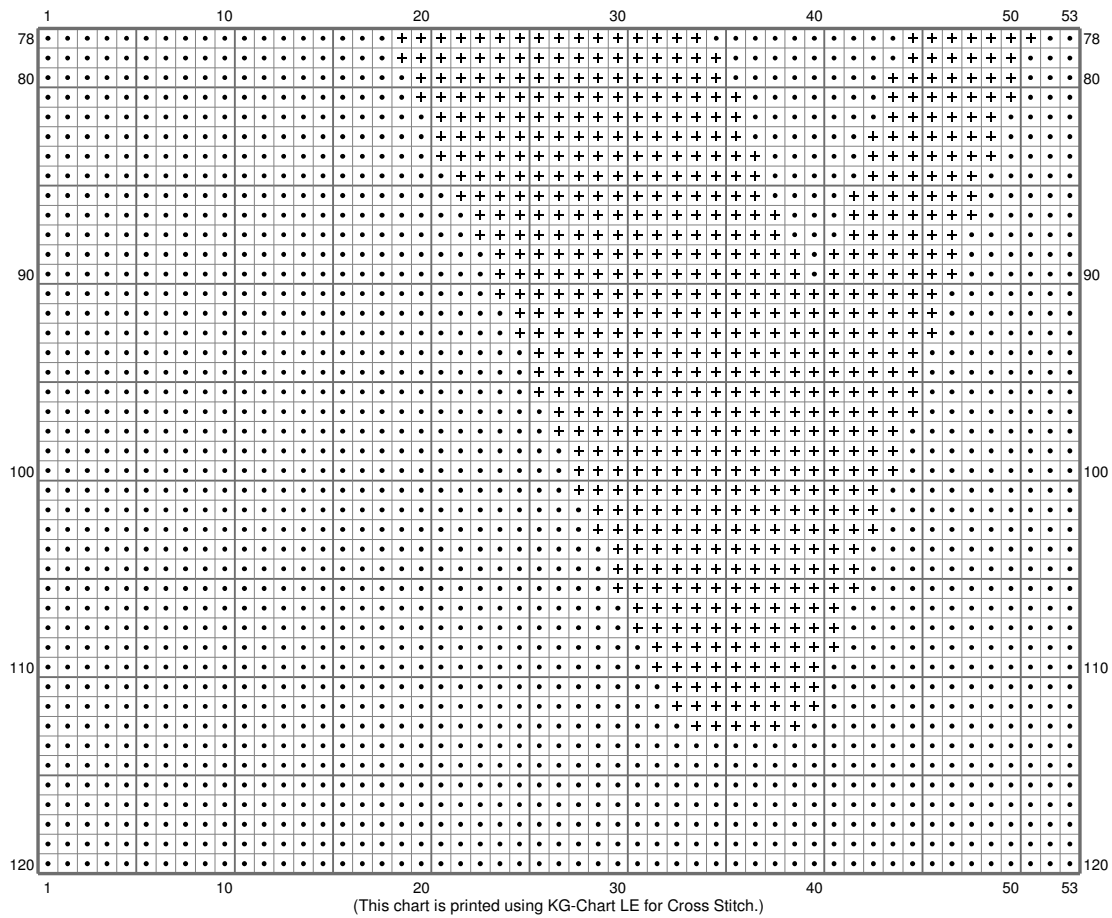
(This chart is printed using KG-Chart LE for Cross Stitch.)

Untitled

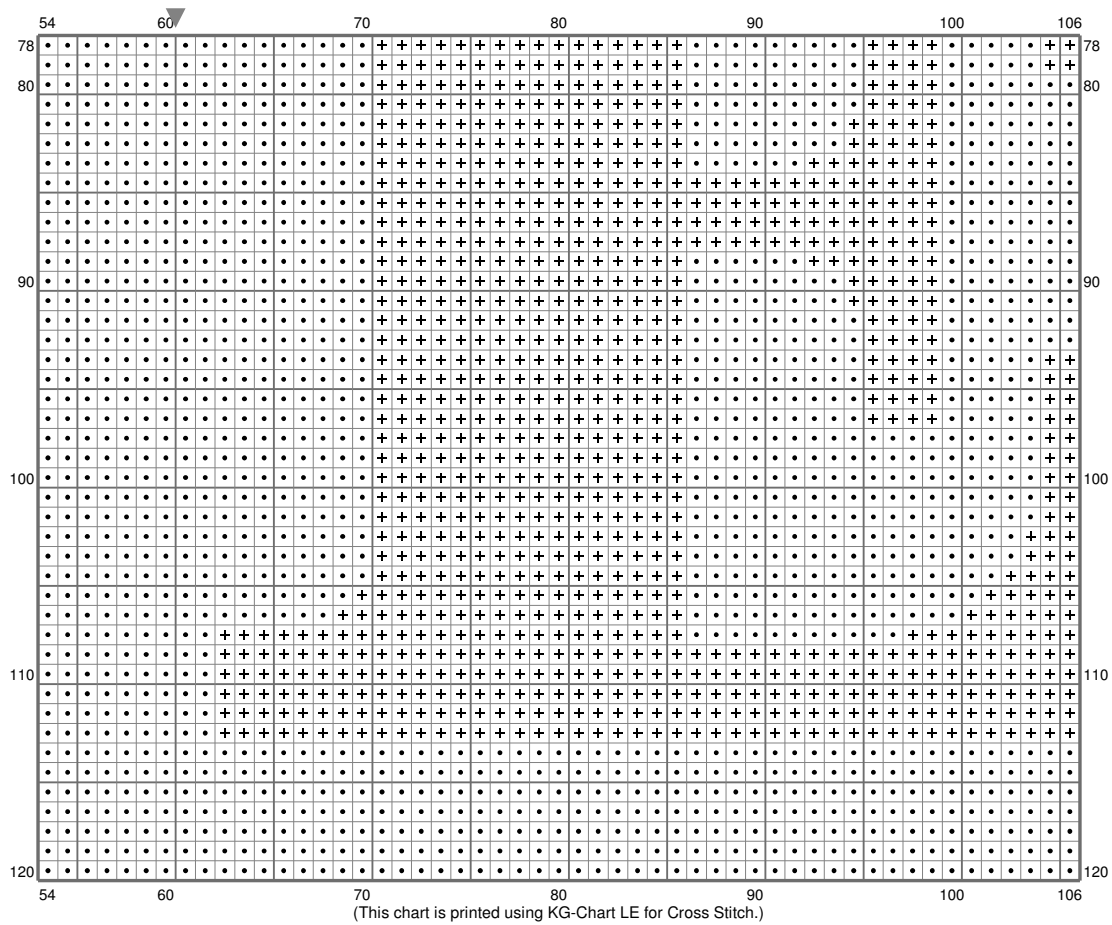


(This chart is printed using KG-Chart LE for Cross Stitch.)

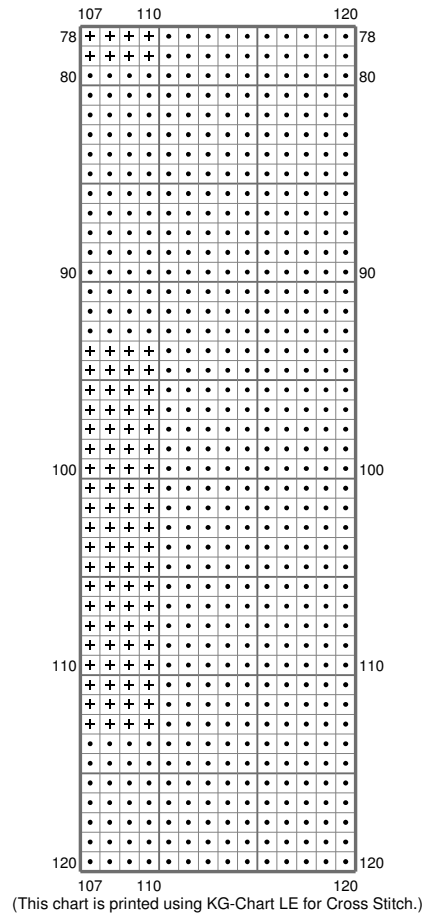
Untitled



Untitled



Untitled



Stitch Count: 120w x 120h
 Finished Size: 43.54 cm x 43.54 cm (14 ct./inch)
 Cloth: Linen
 Cloth's Color: White
 # of colors: 4 Colors

Color Table (DMC)

Cross Stitch

+	310	(4675 ct)
□	321	(731 ct)
—	3024	(187 ct)
•	B5200	(8807 ct)