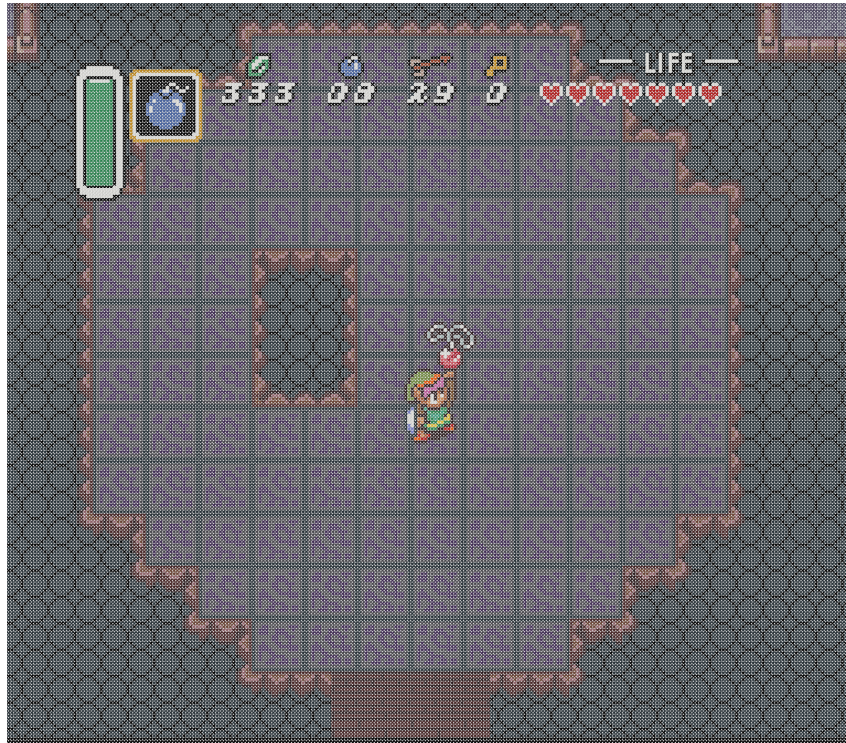
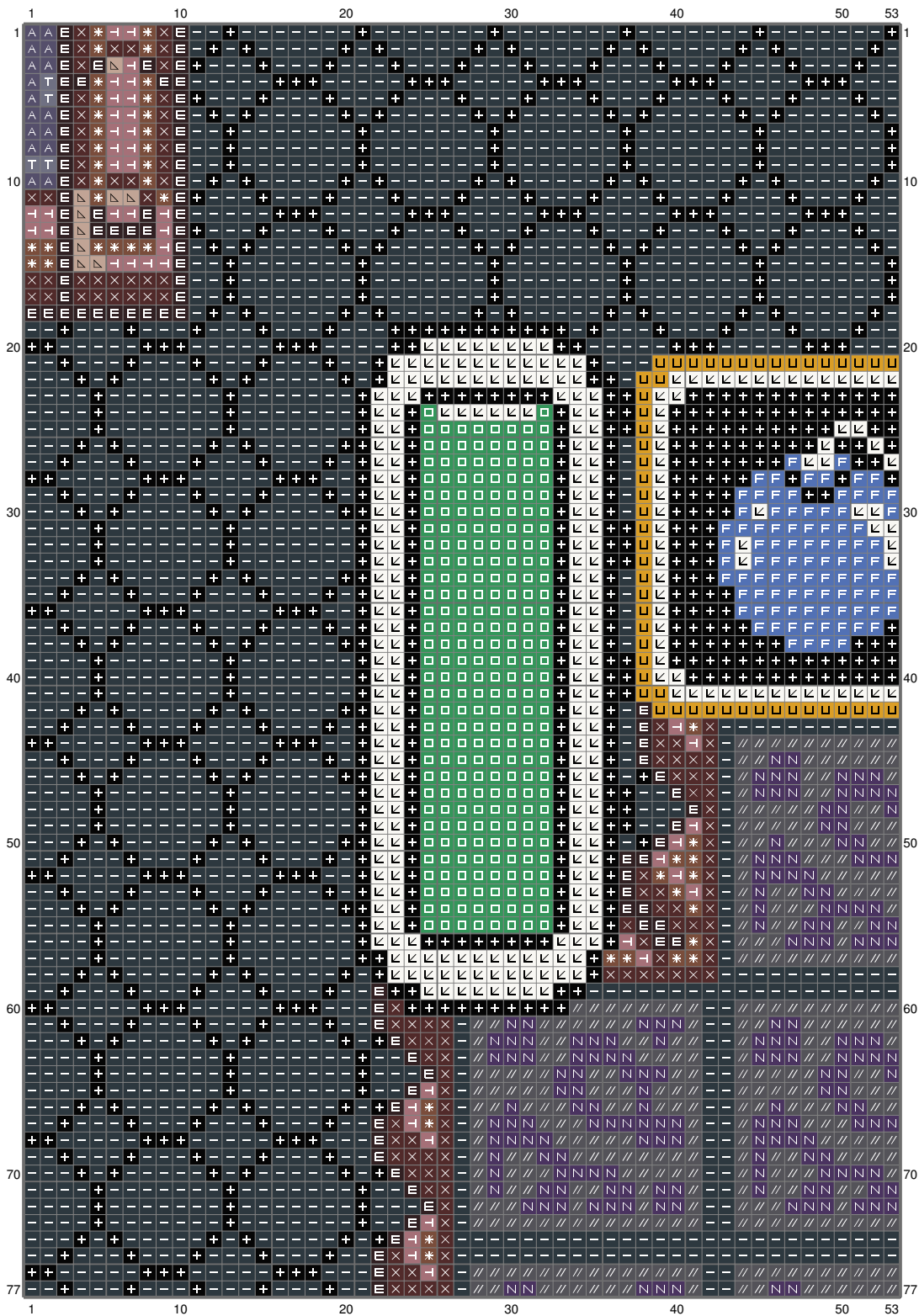


Untitled



Untitled



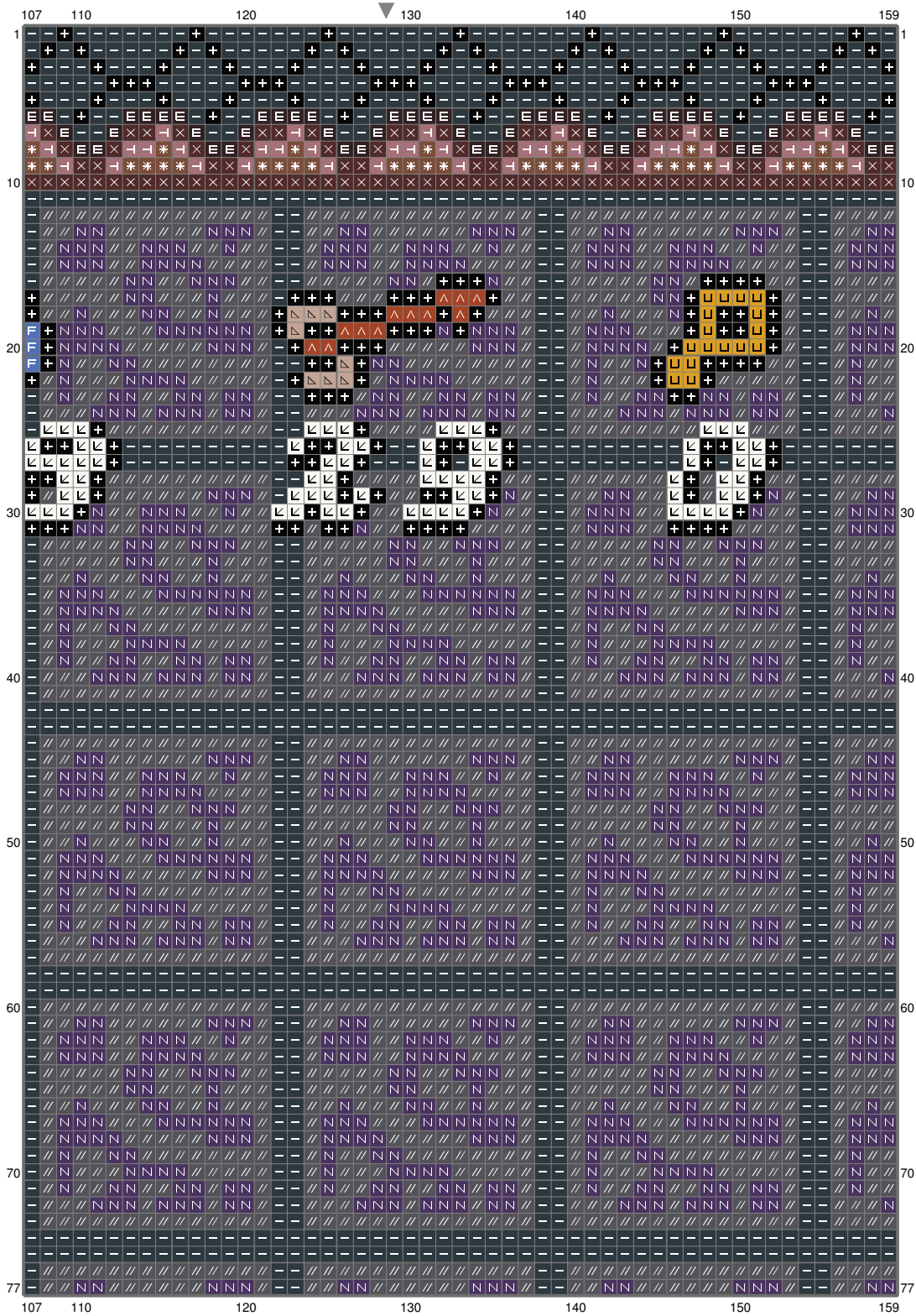
(This chart is printed using KG-Chart LE for Cross Stitch.)

Untitled

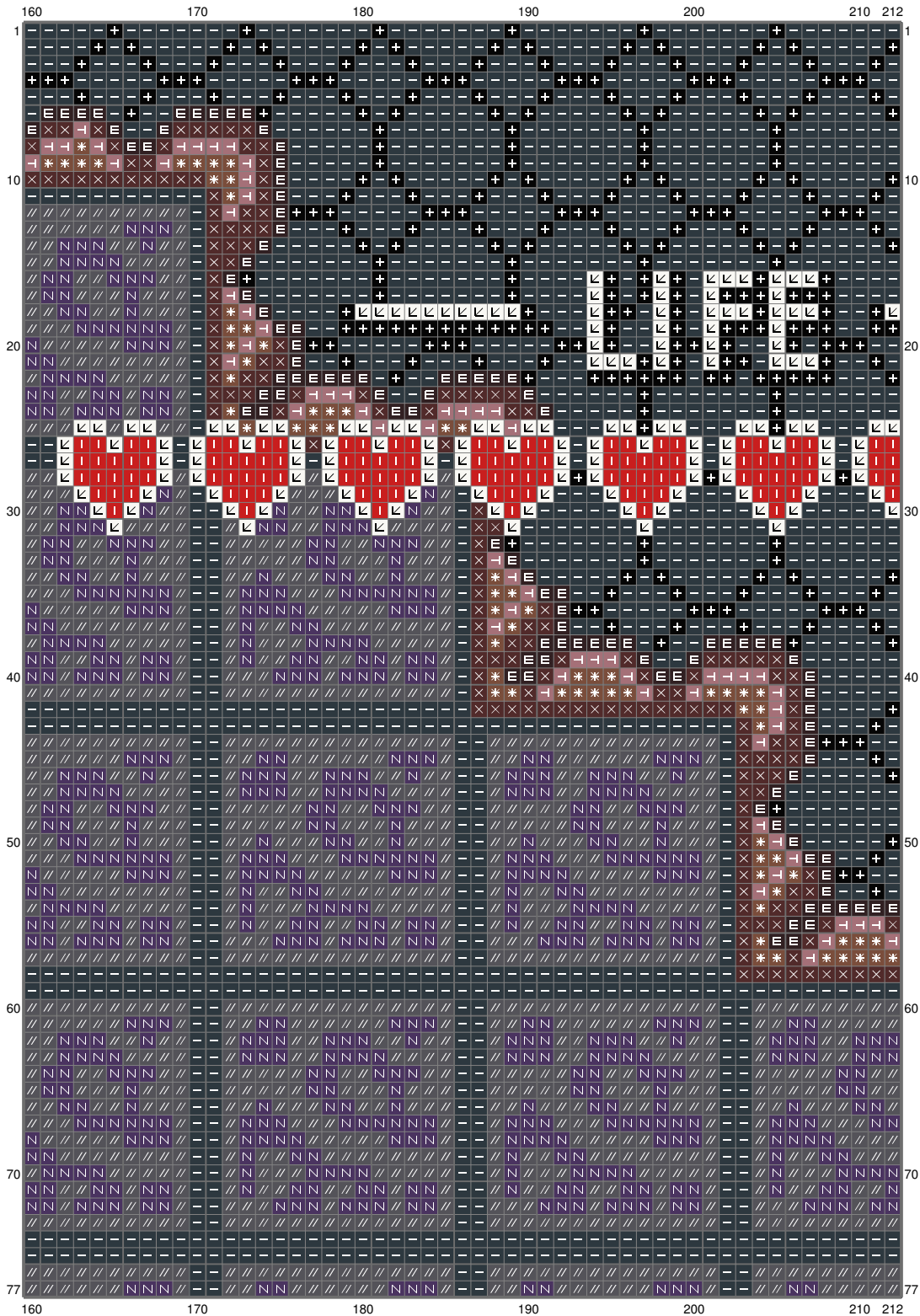


(This chart is printed using KG-Chart LE for Cross Stitch.)

Untitled

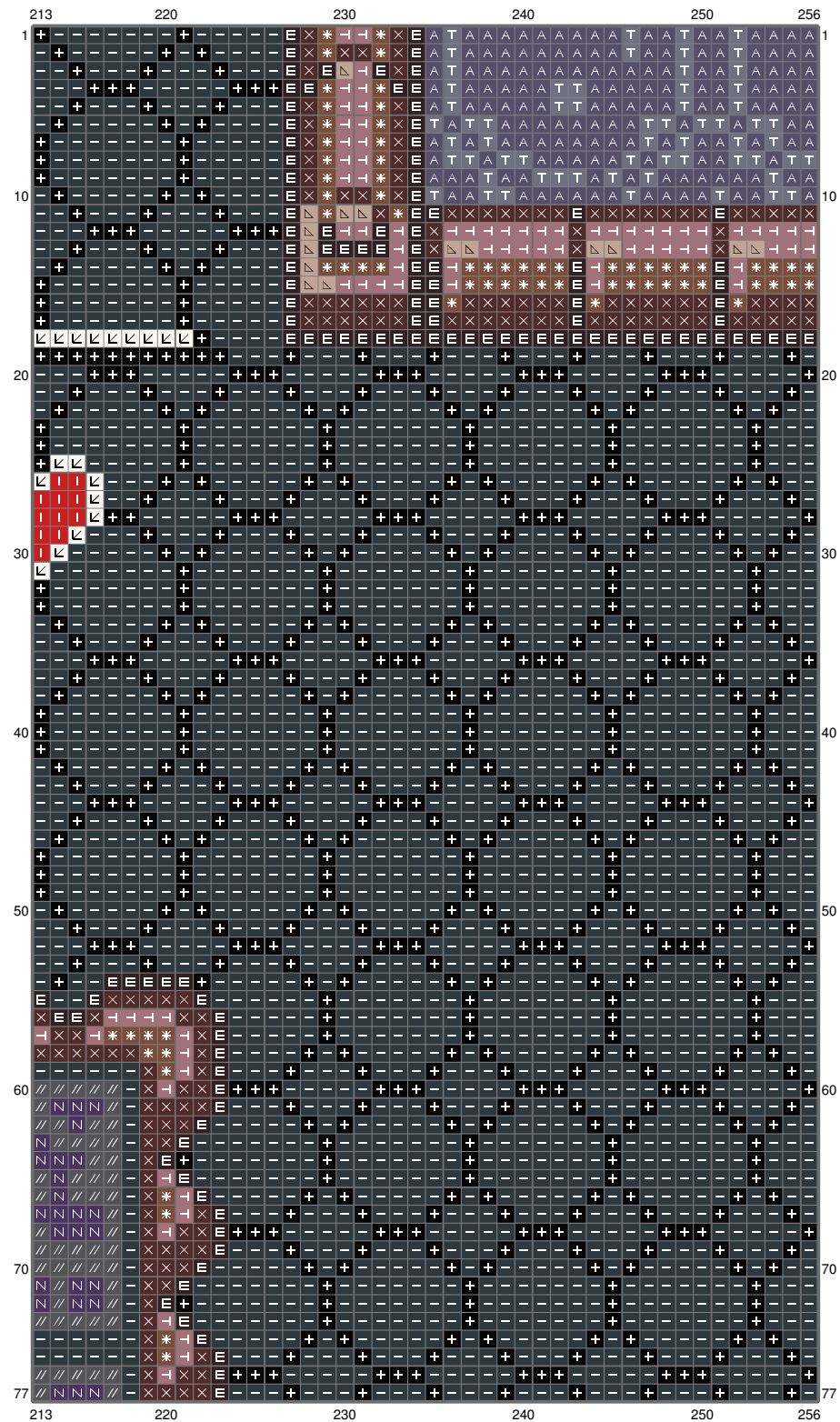


Untitled



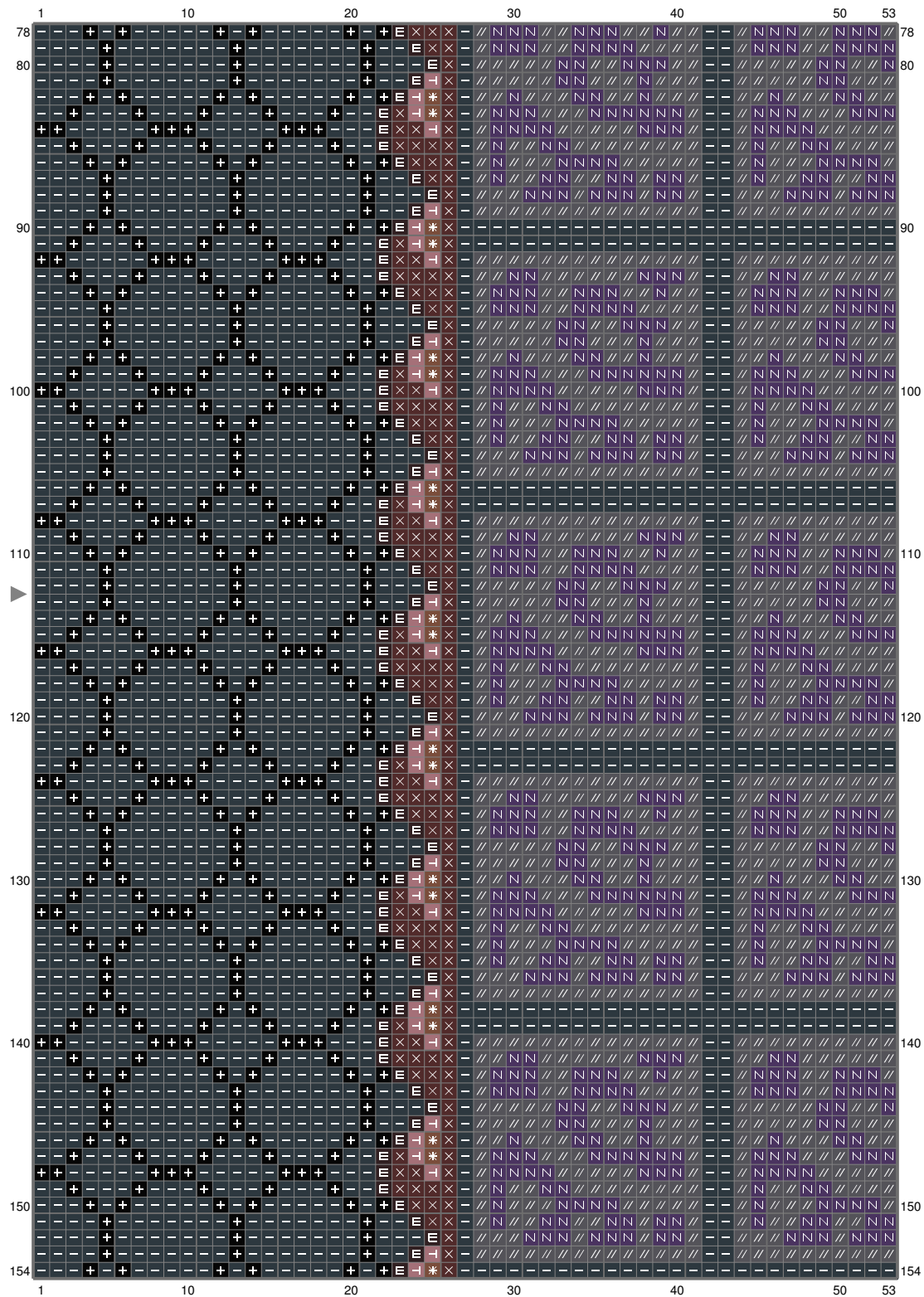
(This chart is printed using KG-Chart LE for Cross Stitch.)

Untitled



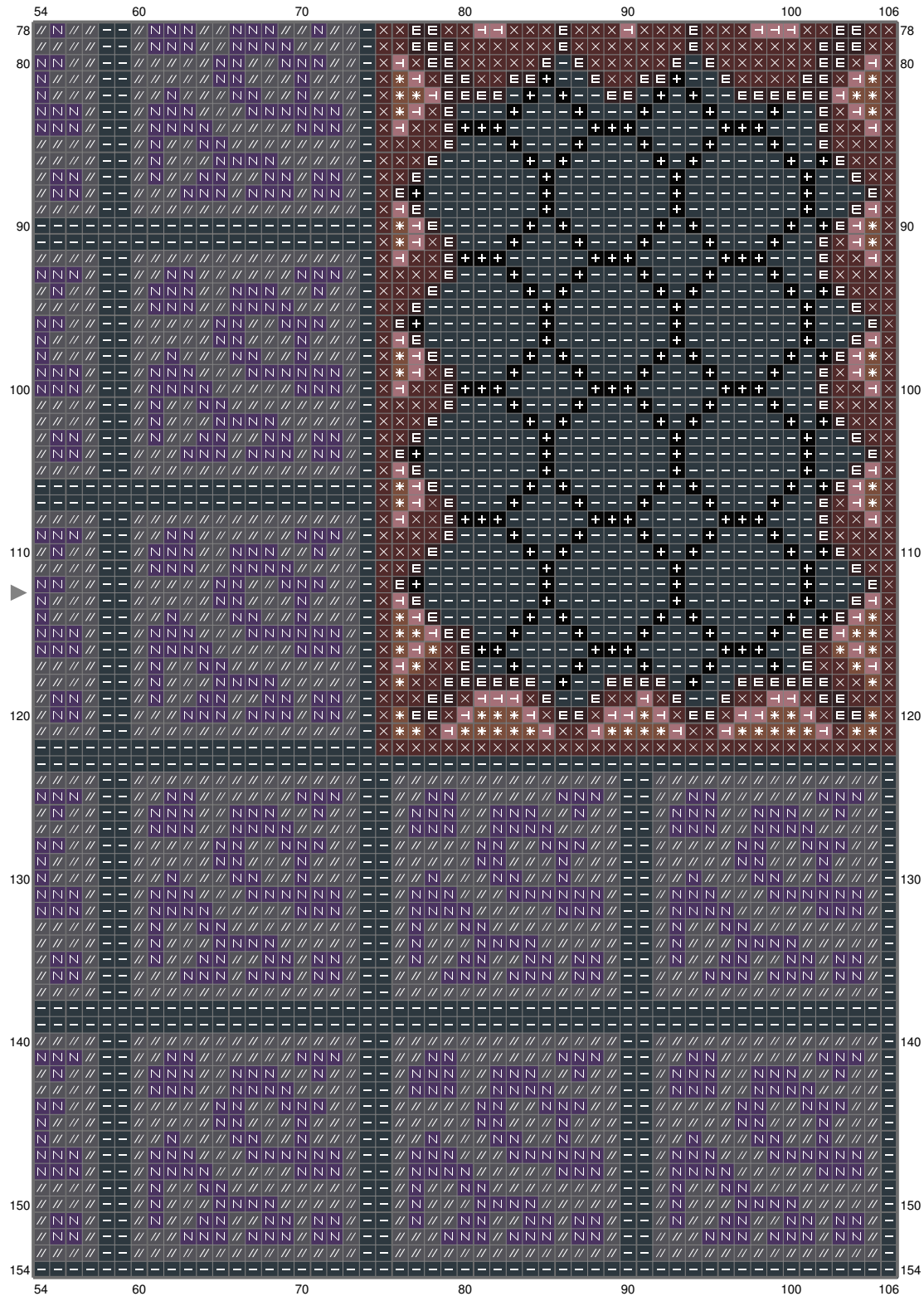
(This chart is printed using KG-Chart LE for Cross Stitch.)

Untitled



(This chart is printed using KG-Chart LE for Cross Stitch.)

Untitled



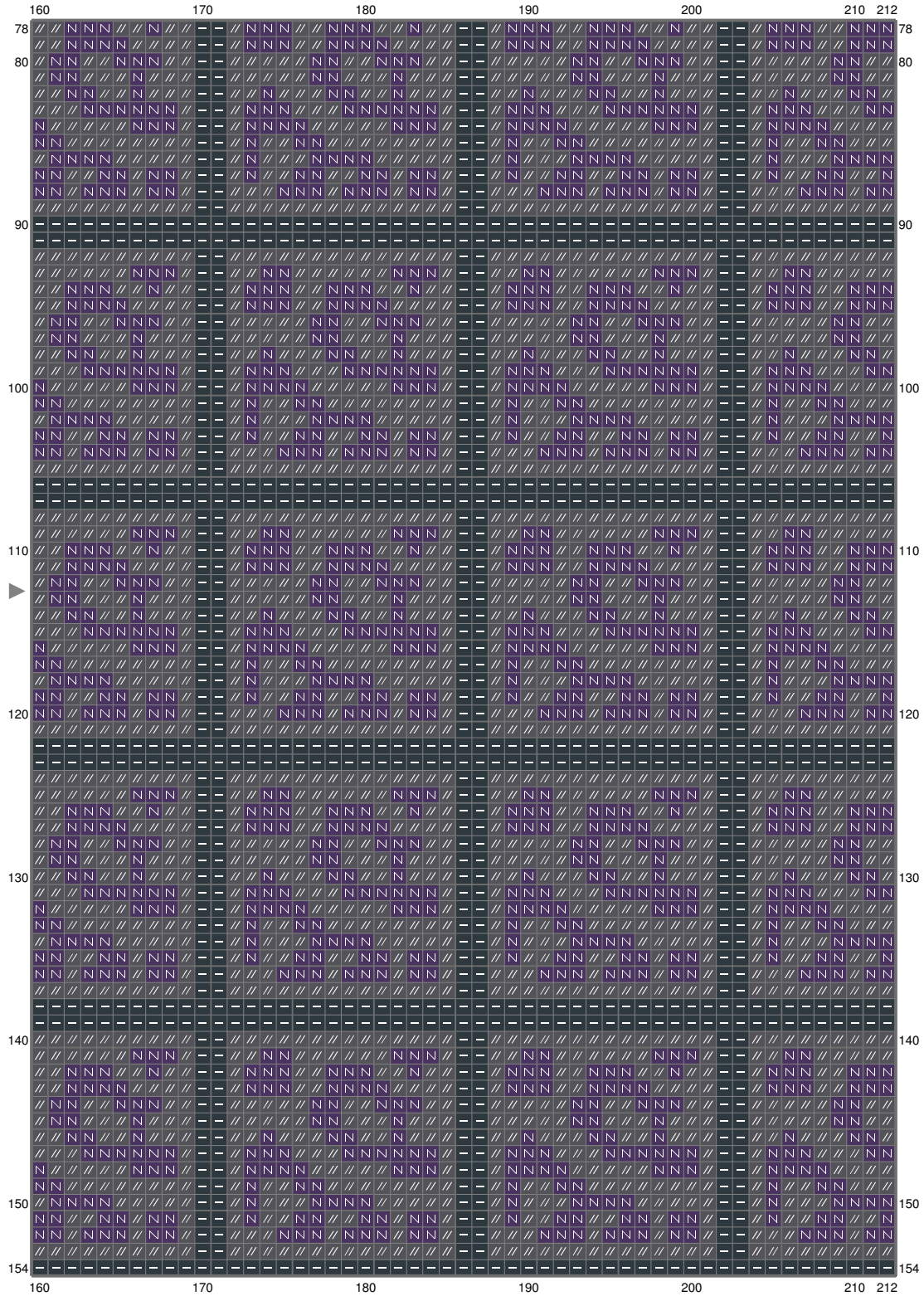
(This chart is printed using KG-Chart LE for Cross Stitch.)

Untitled



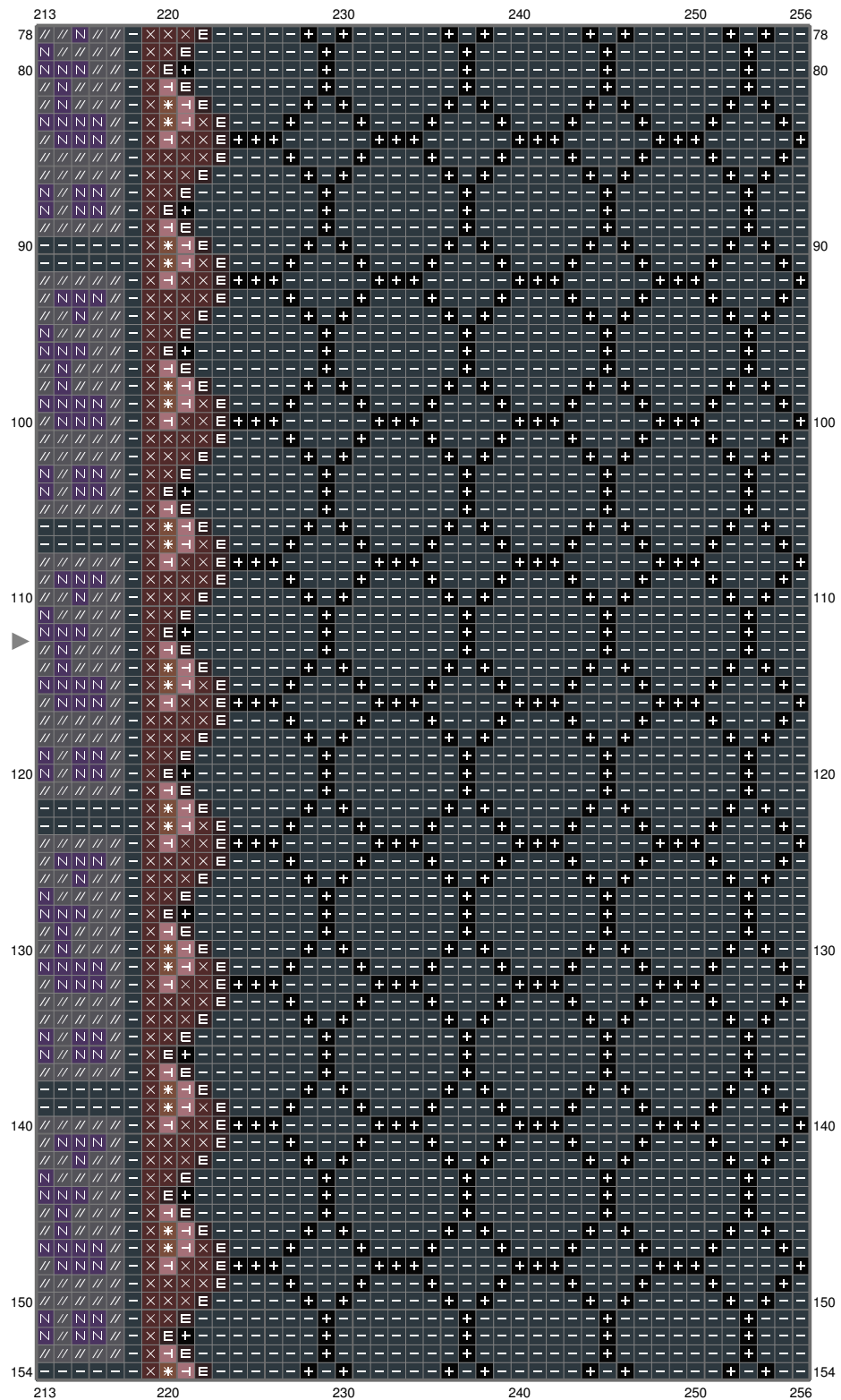
(This chart is printed using KG-Chart LE for Cross Stitch.)

Untitled



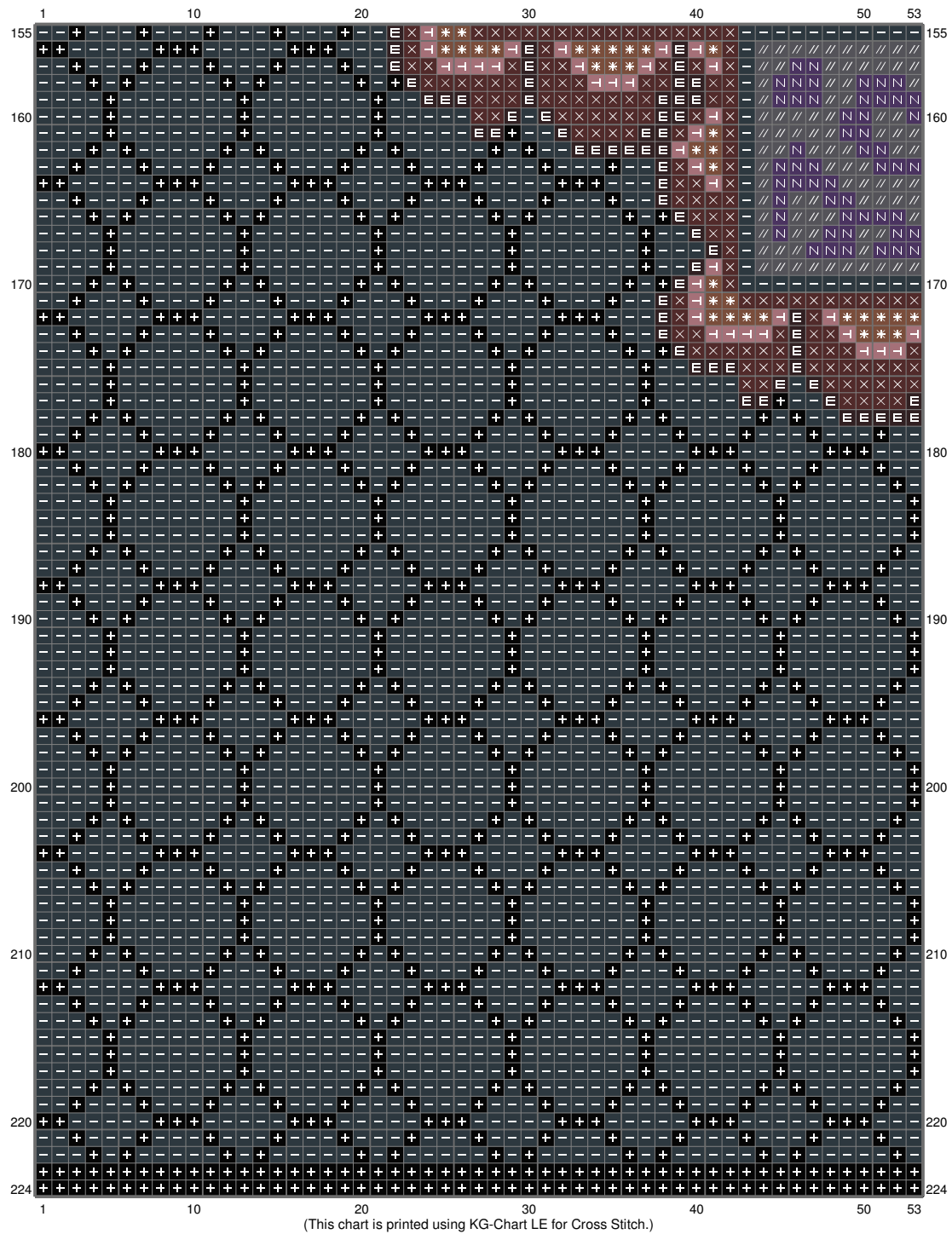
(This chart is printed using KG-Chart LE for Cross Stitch.)

Untitled

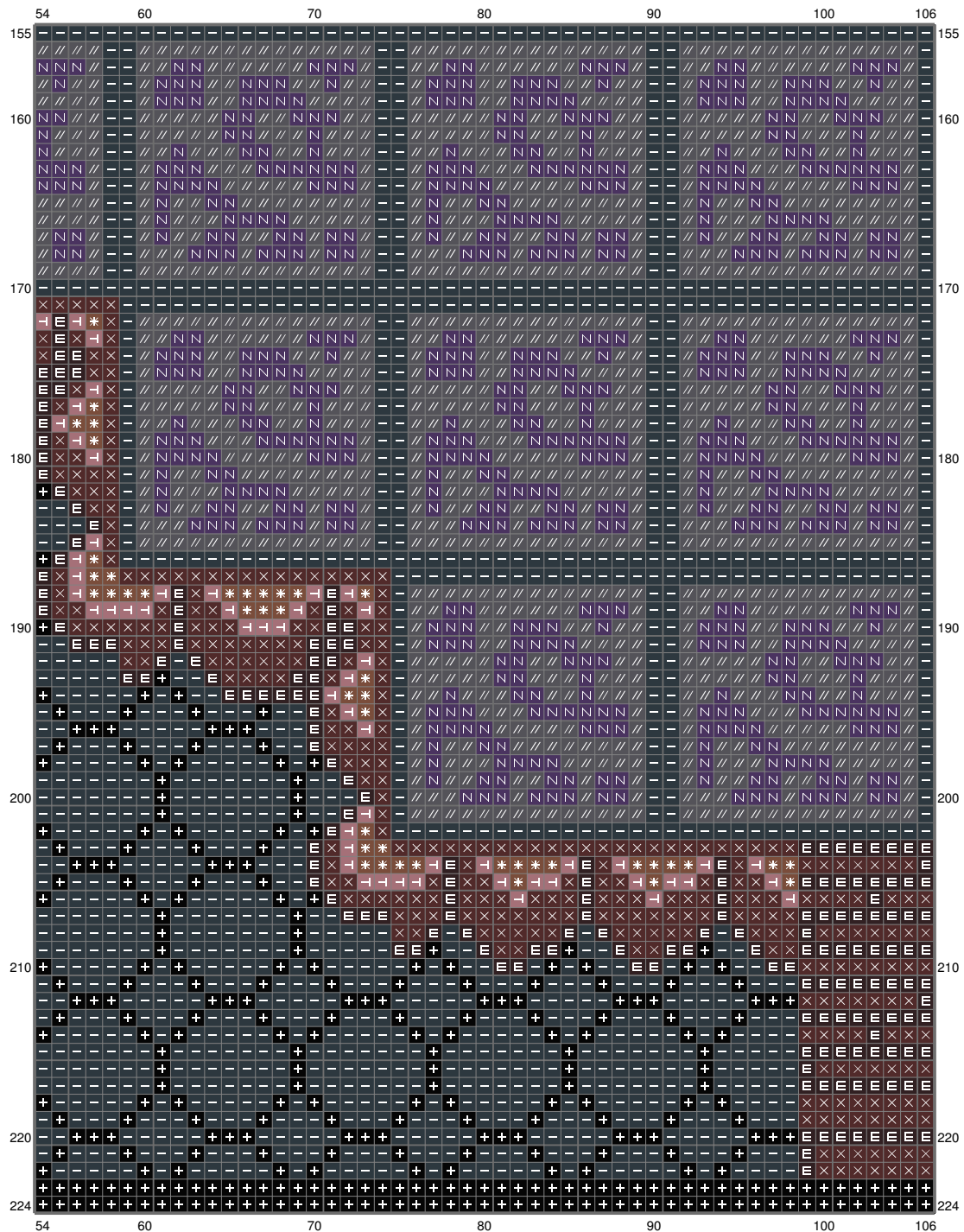


(This chart is printed using KG-Chart LE for Cross Stitch.)

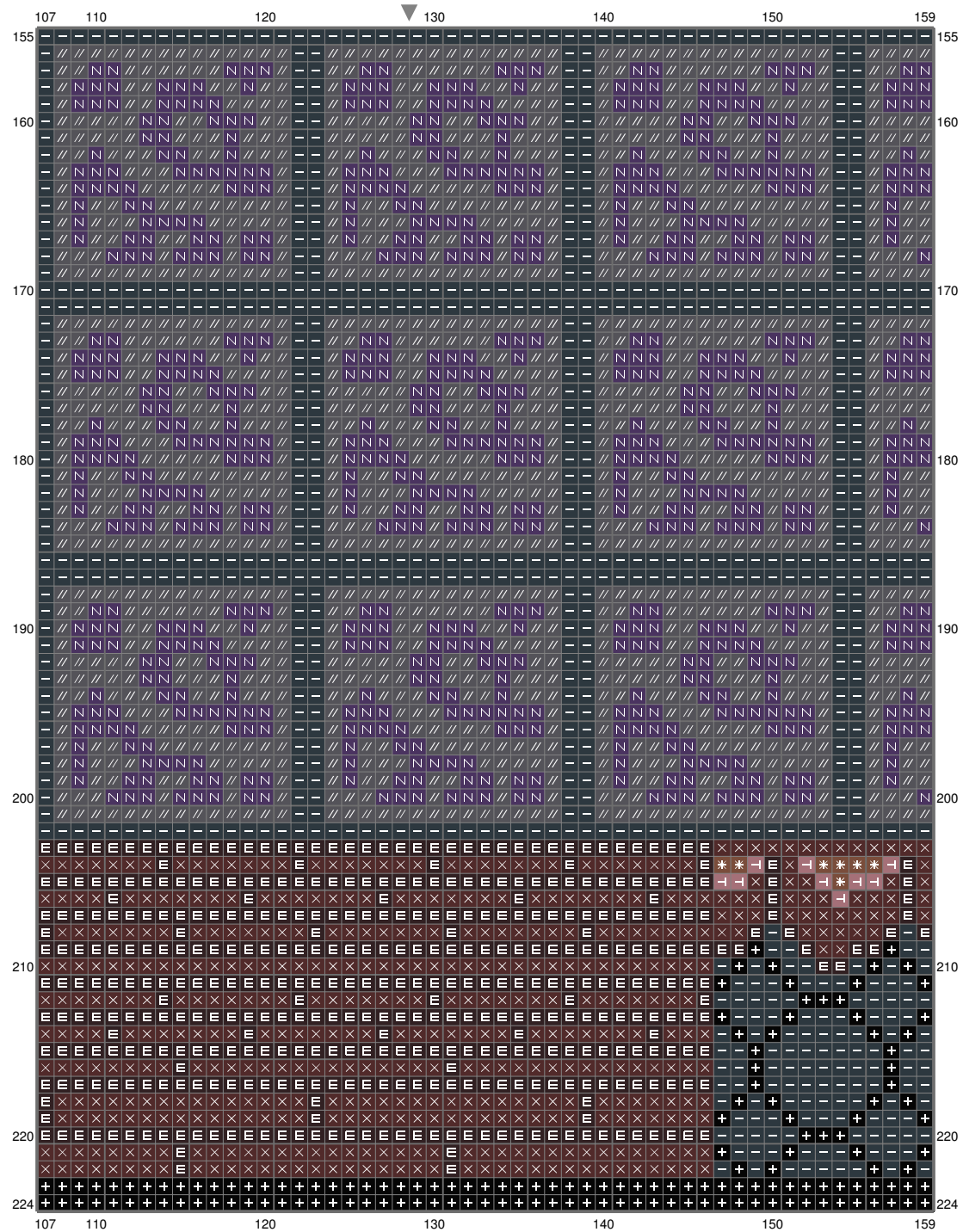
Untitled



Untitled

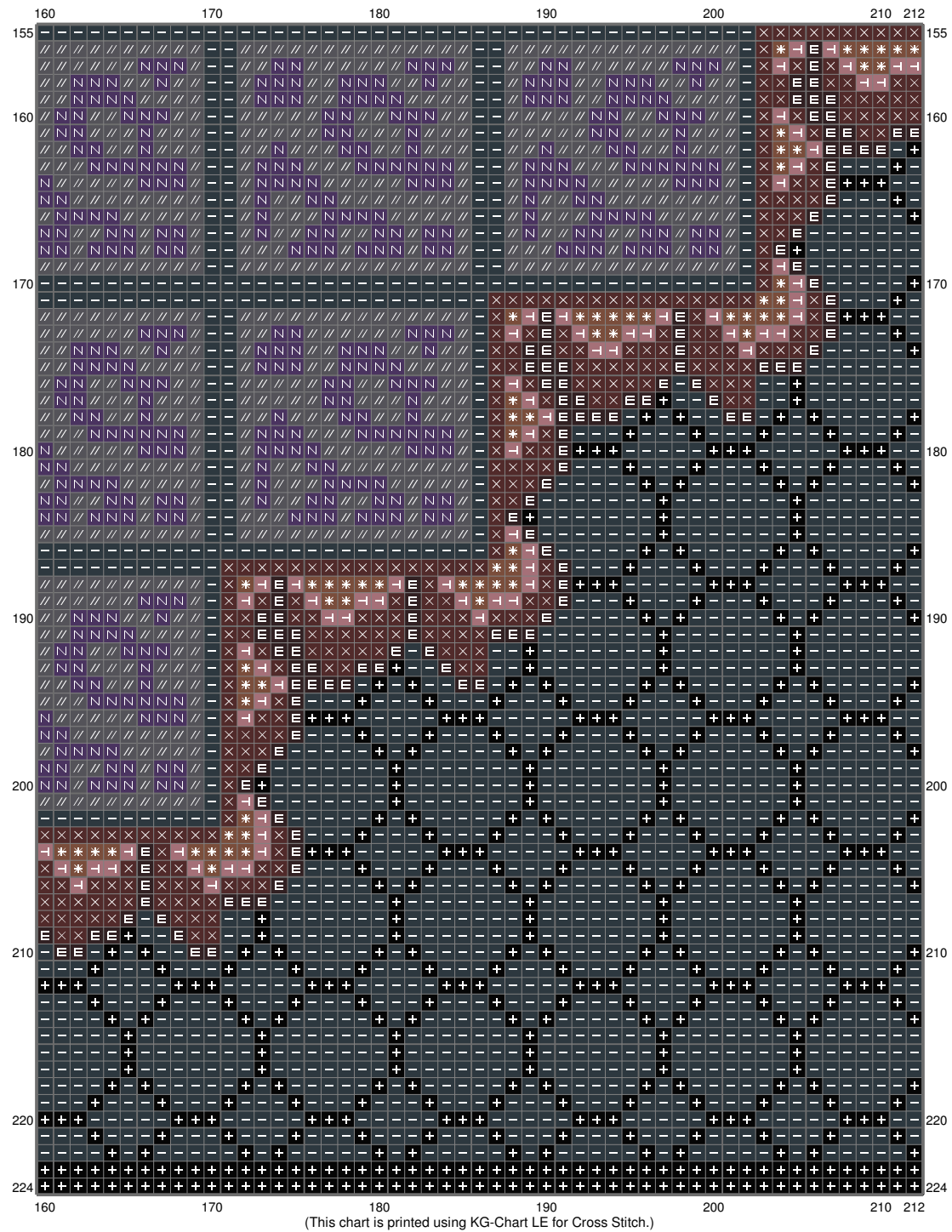


Untitled

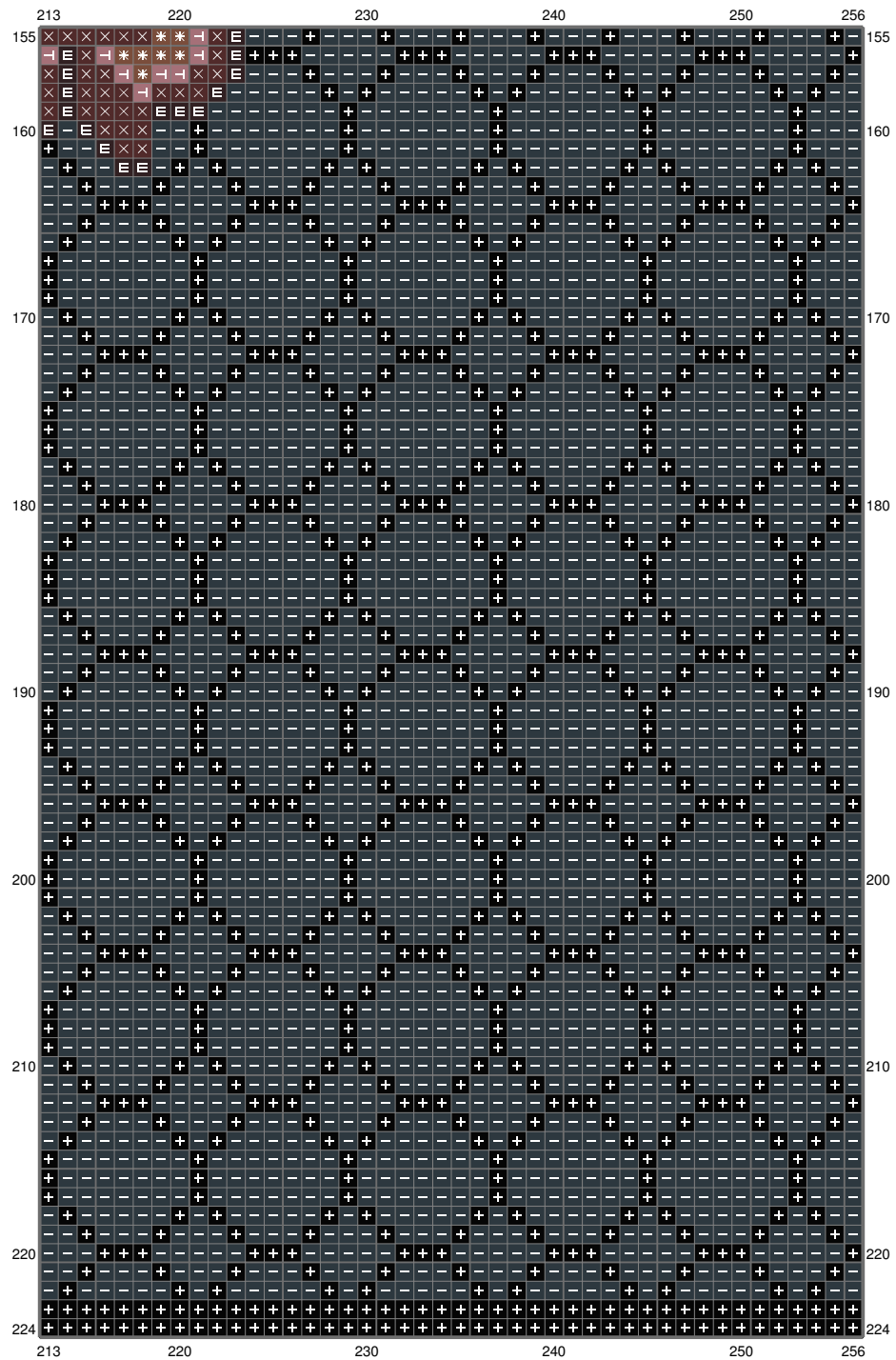


(This chart is printed using KG-Chart LE for Cross Stitch.)

Untitled



Untitled































(This chart is printed using KG-Chart LE for Cross Stitch.)

Untitled

Stitch Count: 256w x 224h
Finished Size: 72.24 cm x 63.21 cm (18 ct./inch)
Cloth: Aida
Cloth's Color: White
of colors: 29 Colors

Color Table (DMC)

Cross Stitch

	310	(5771 ct)
	939	(1749 ct)
	701	(288 ct)
	500	(22767 ct)
	3371	(2532 ct)
	433	(534 ct)
	817	(133 ct)
	321	(11 ct)
	869	(14 ct)
	975	(25 ct)
	918	(12 ct)
	740	(12 ct)
	470	(27 ct)
	3852	(101 ct)
	444	(8 ct)
	336	(7712 ct)
	3799	(13899 ct)
	413	(175 ct)
	3851	(7 ct)
	825	(118 ct)
	317	(65 ct)
	3839	(6 ct)
	3860	(616 ct)
	3328	(12 ct)
	3607	(13 ct)
	976	(14 ct)
	612	(32 ct)
	927	(21 ct)
	3865	(670 ct)