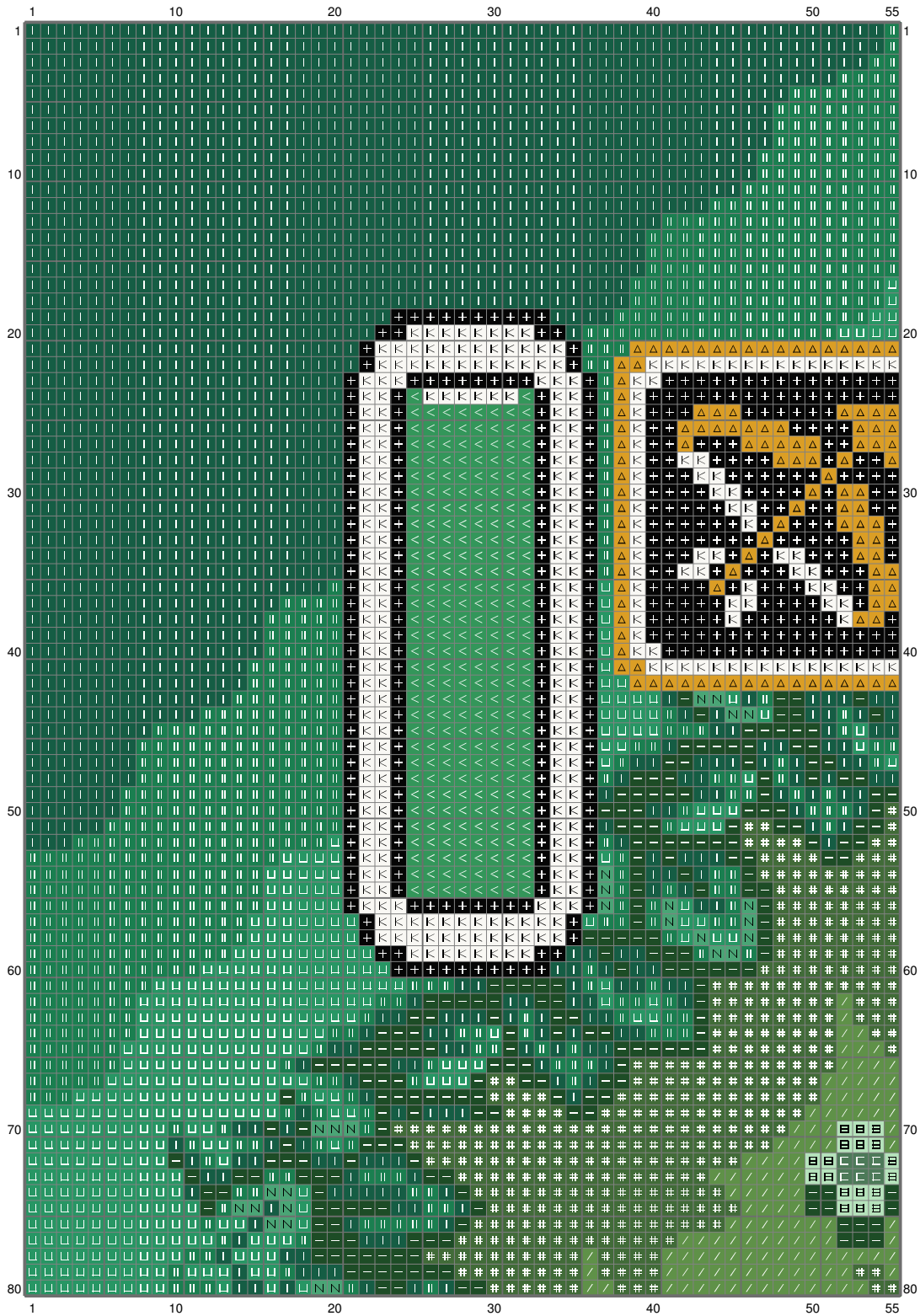


Untitled



Untitled



(This chart is printed using KG-Chart LE for Cross Stitch.)

Untitled



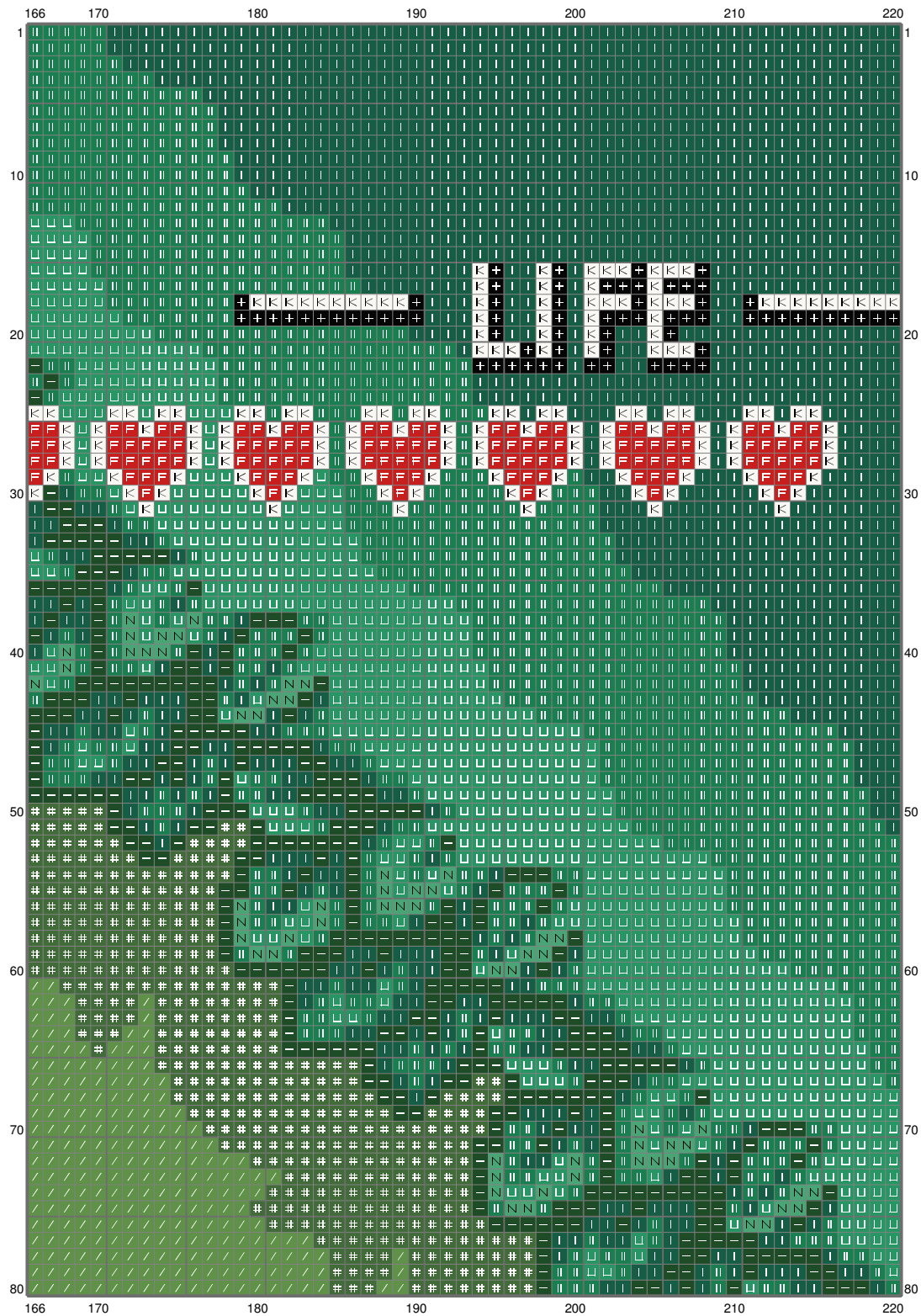
(This chart is printed using KG-Chart LE for Cross Stitch.

Untitled

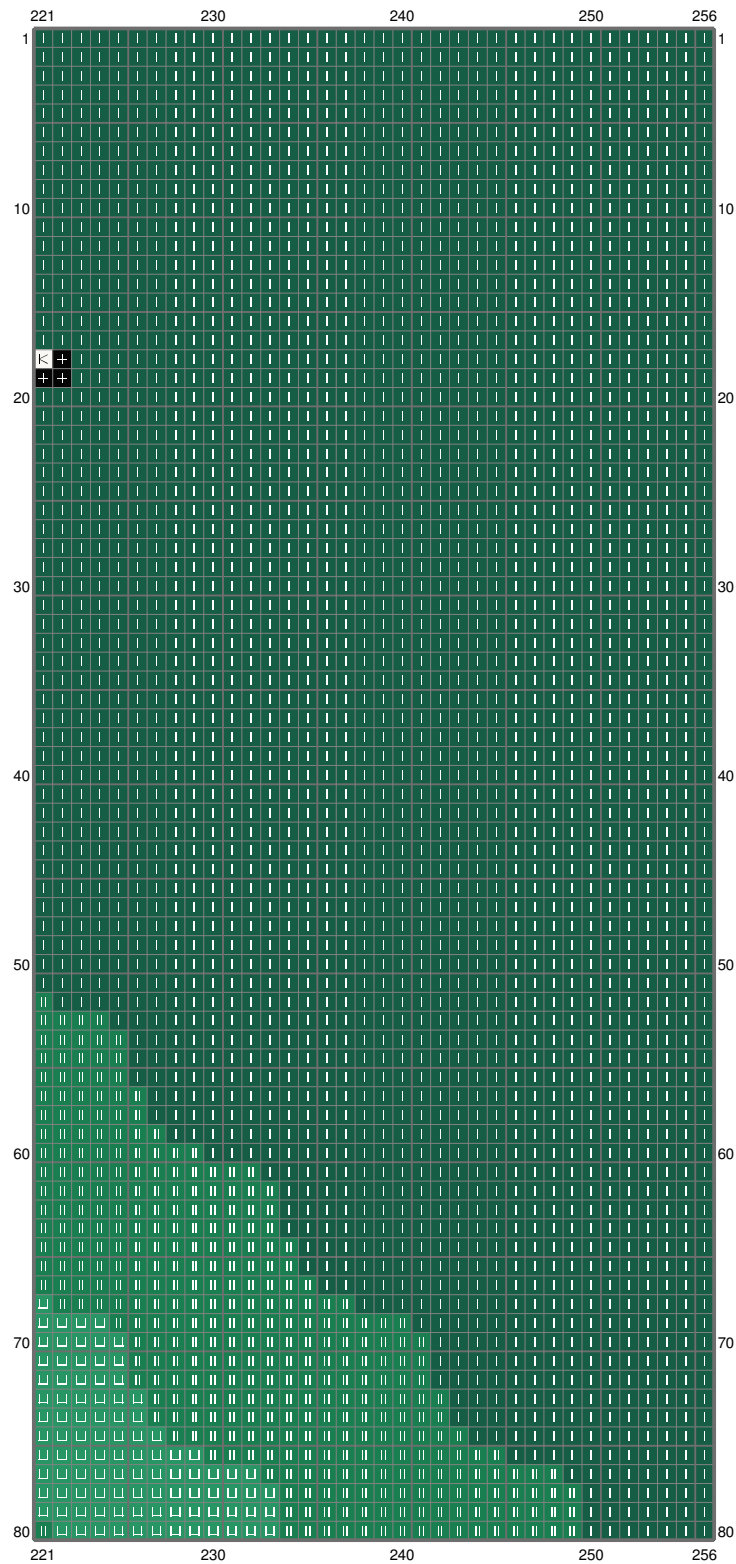


(This chart is printed using KG-Chart LE for Cross Stitch.)

Untitled

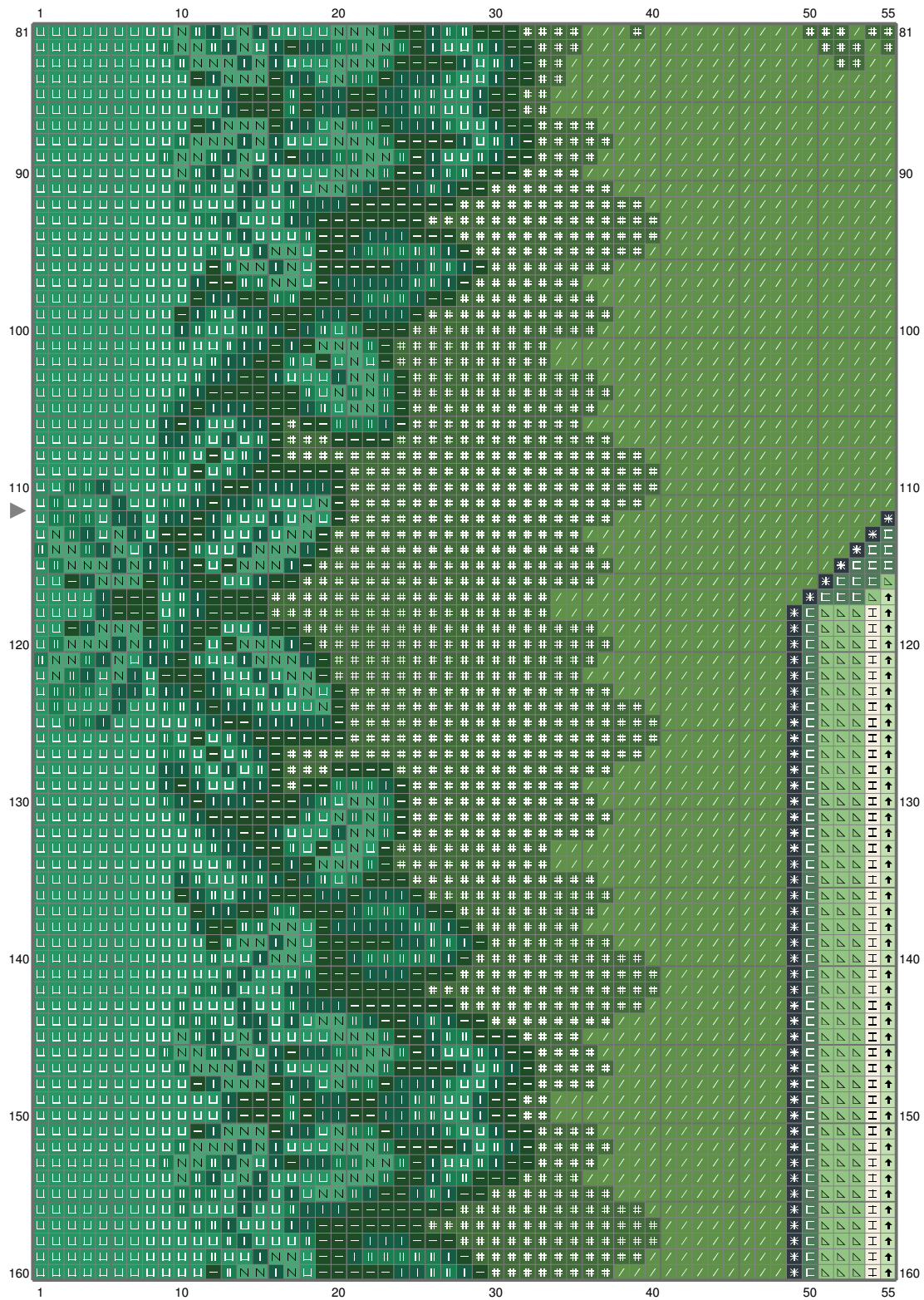


Untitled

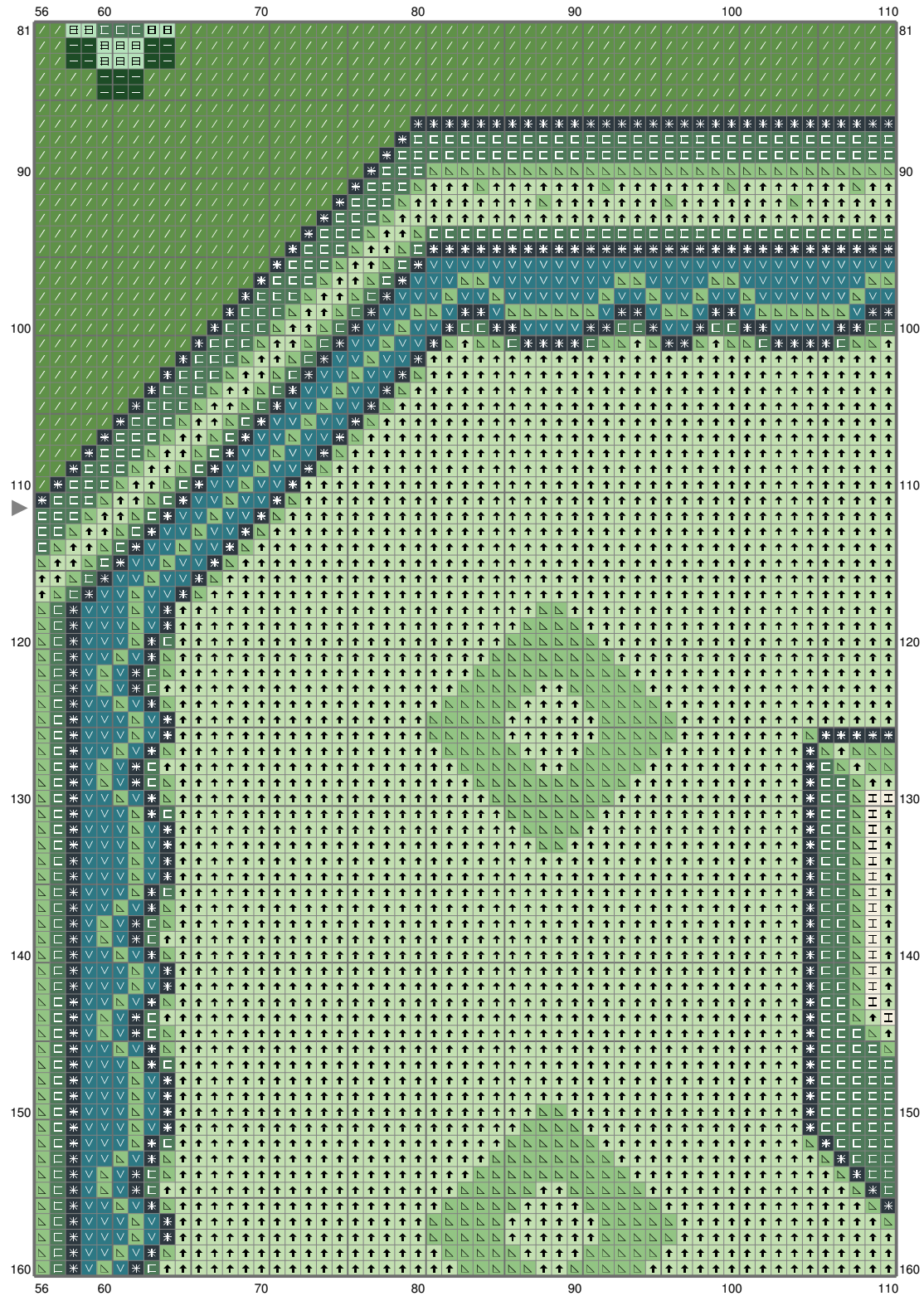


(This chart is printed using KG-Chart LE for Cross Stitch.)

Untitled

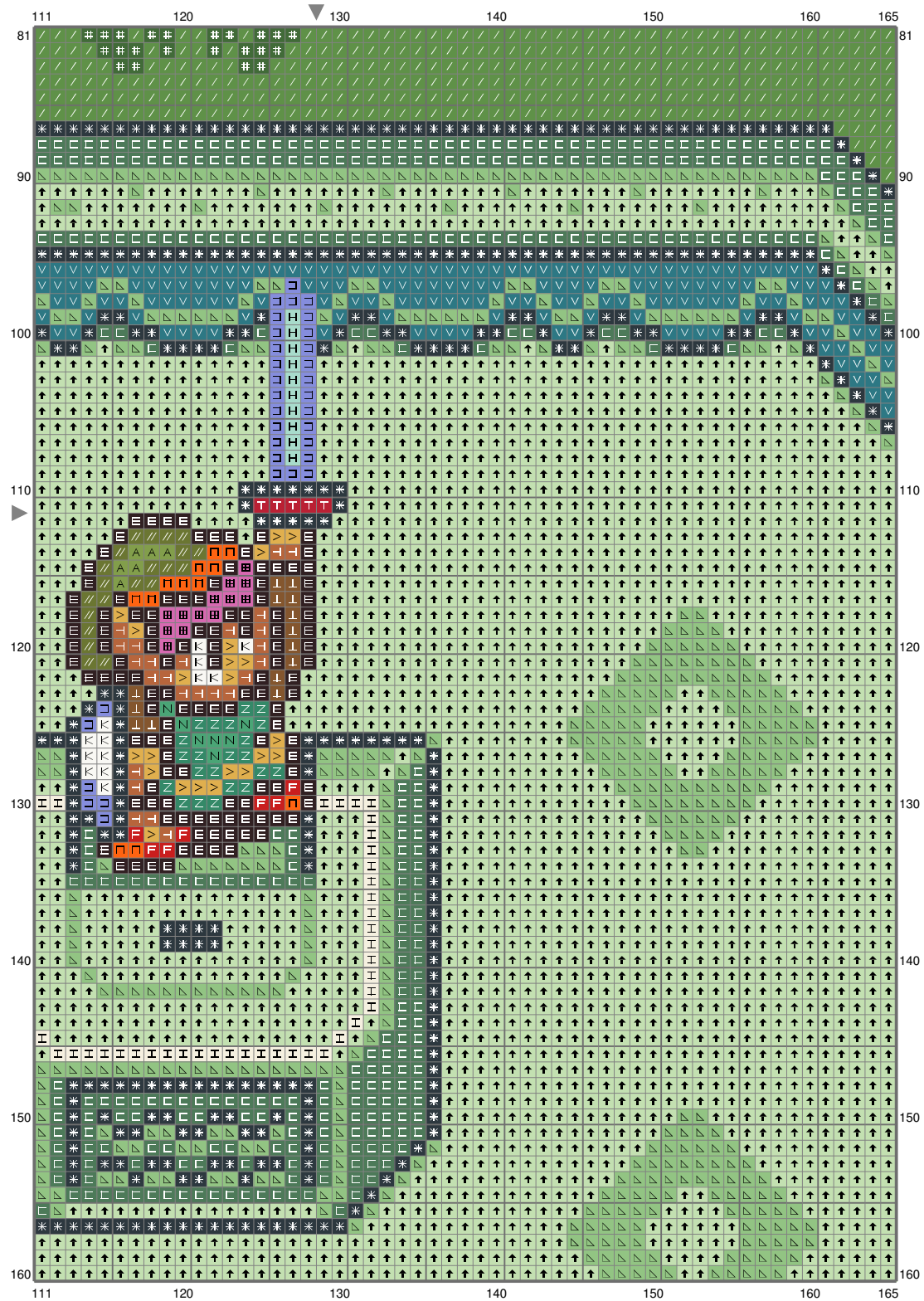


Untitled



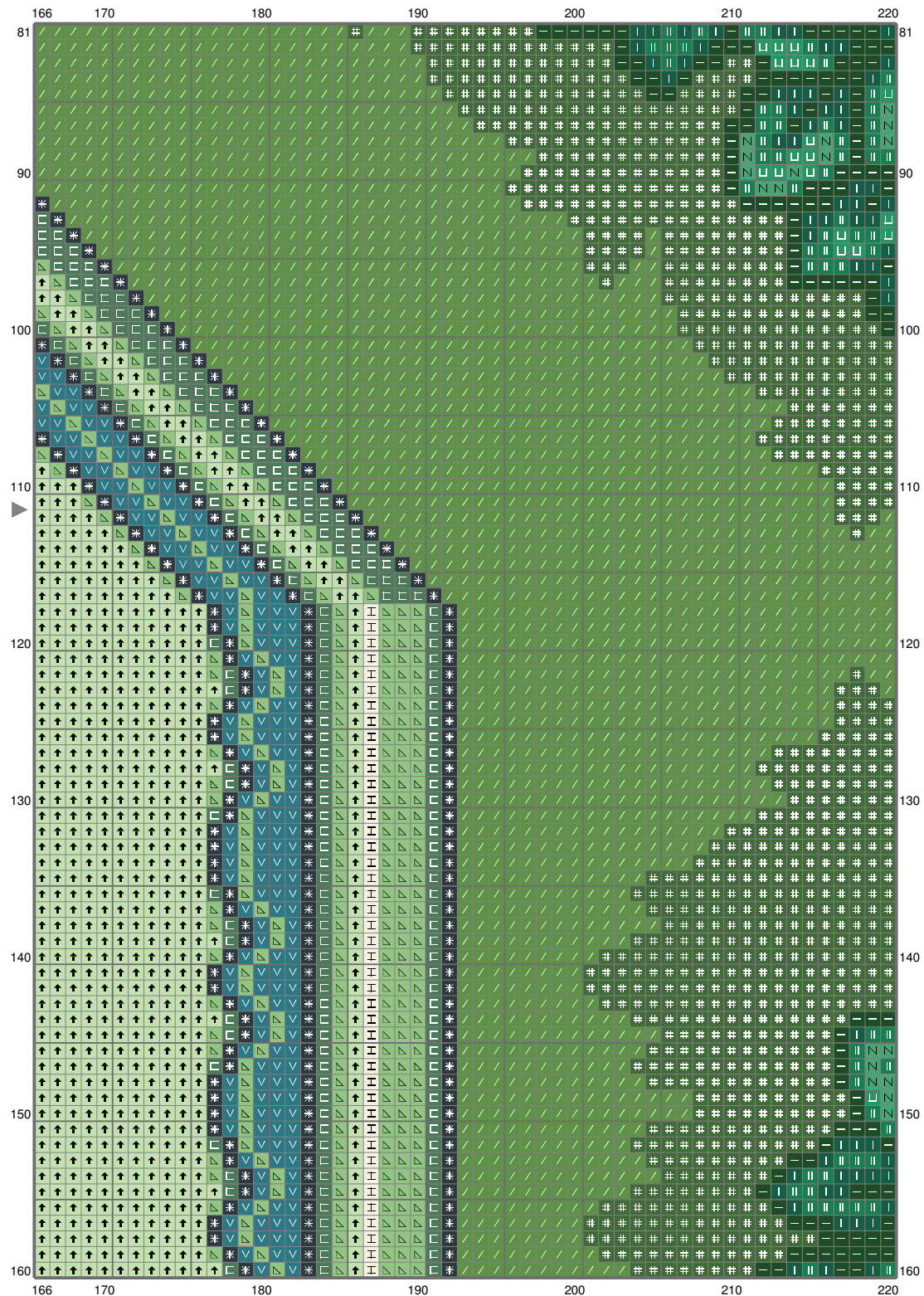
(This chart is printed using KG-Chart LE for Cross Stitch.)

Untitled



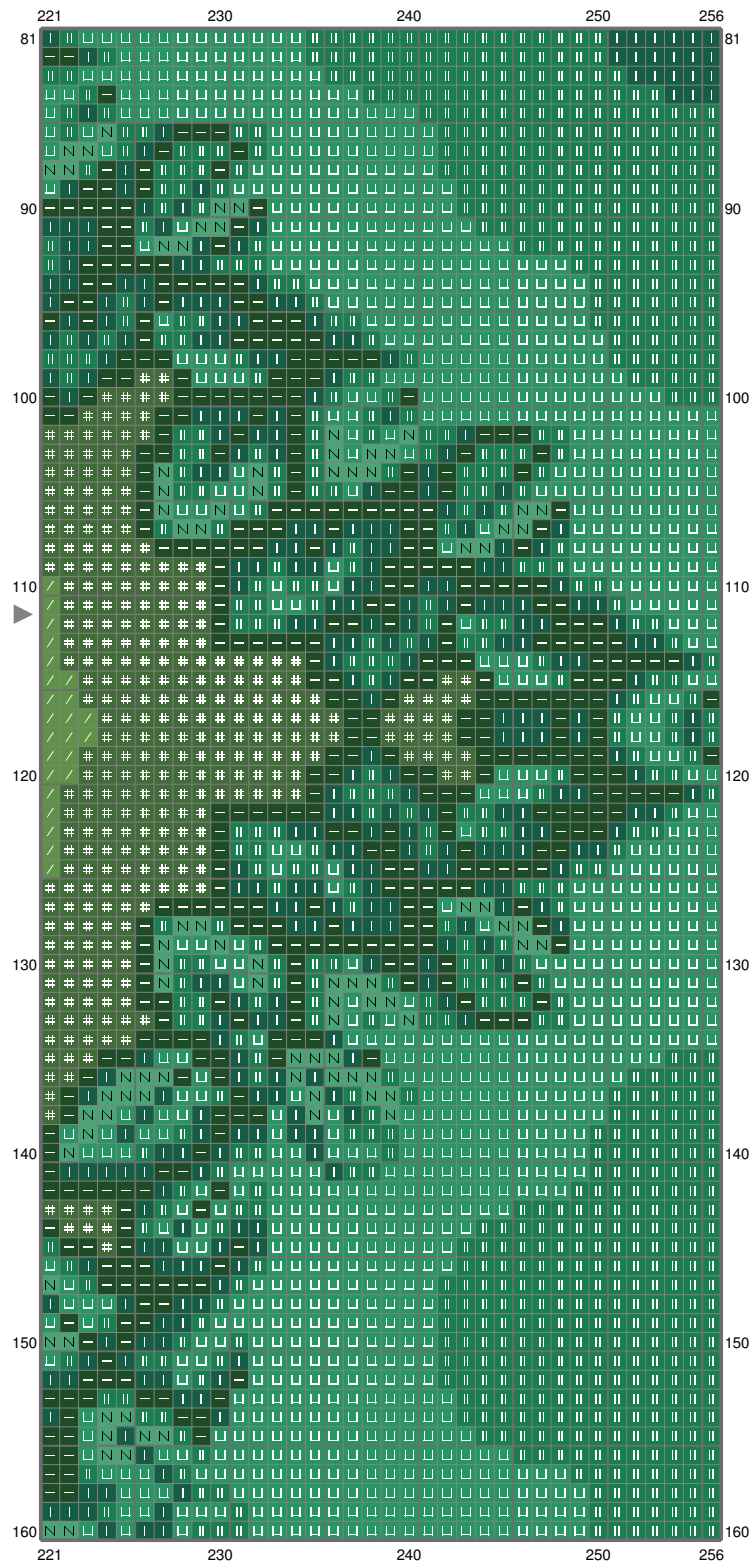
(This chart is printed using KG-Chart LE for Cross Stitch.)

Untitled

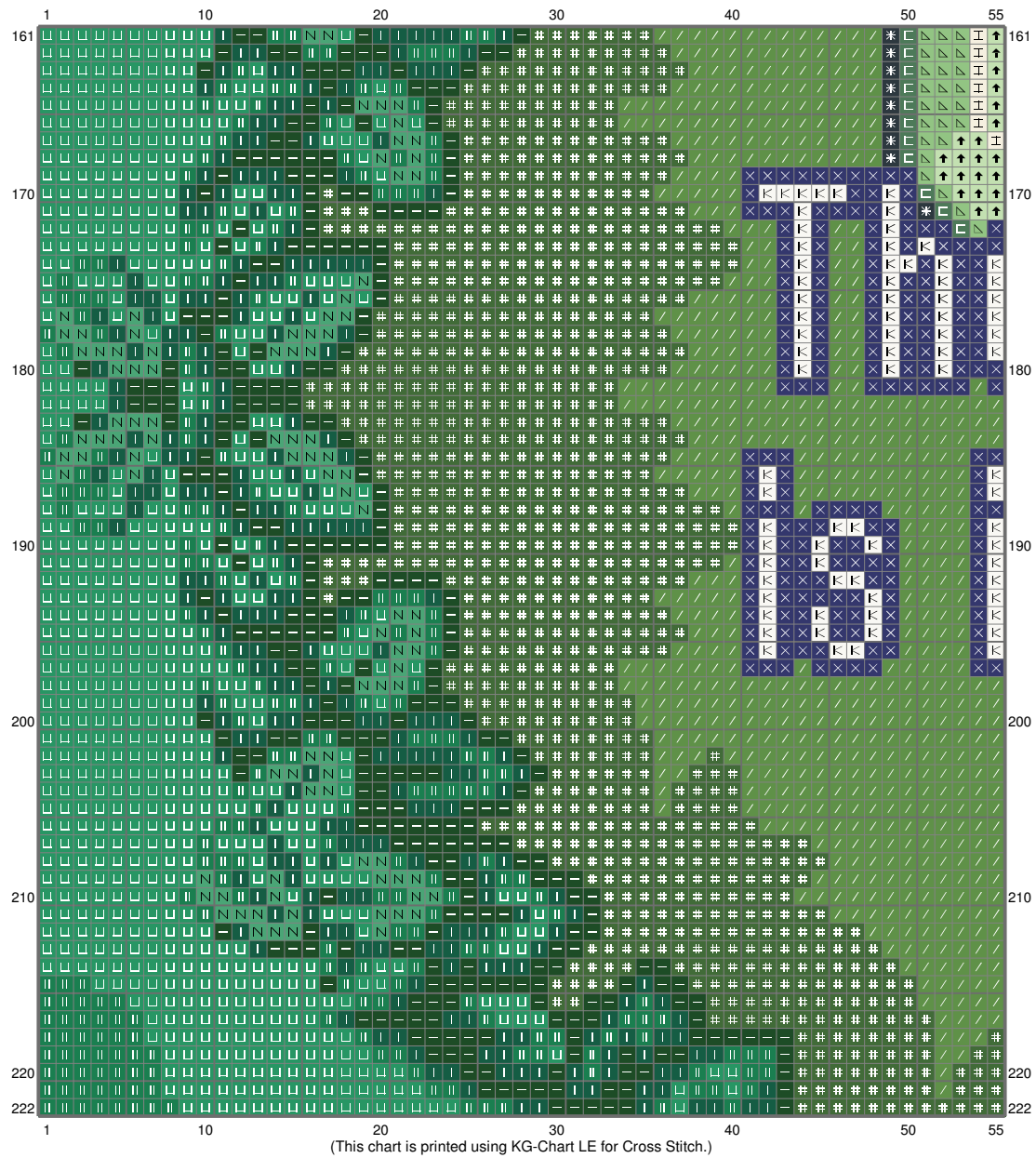


(This chart is printed using KG-Chart LE for Cross Stitch.)

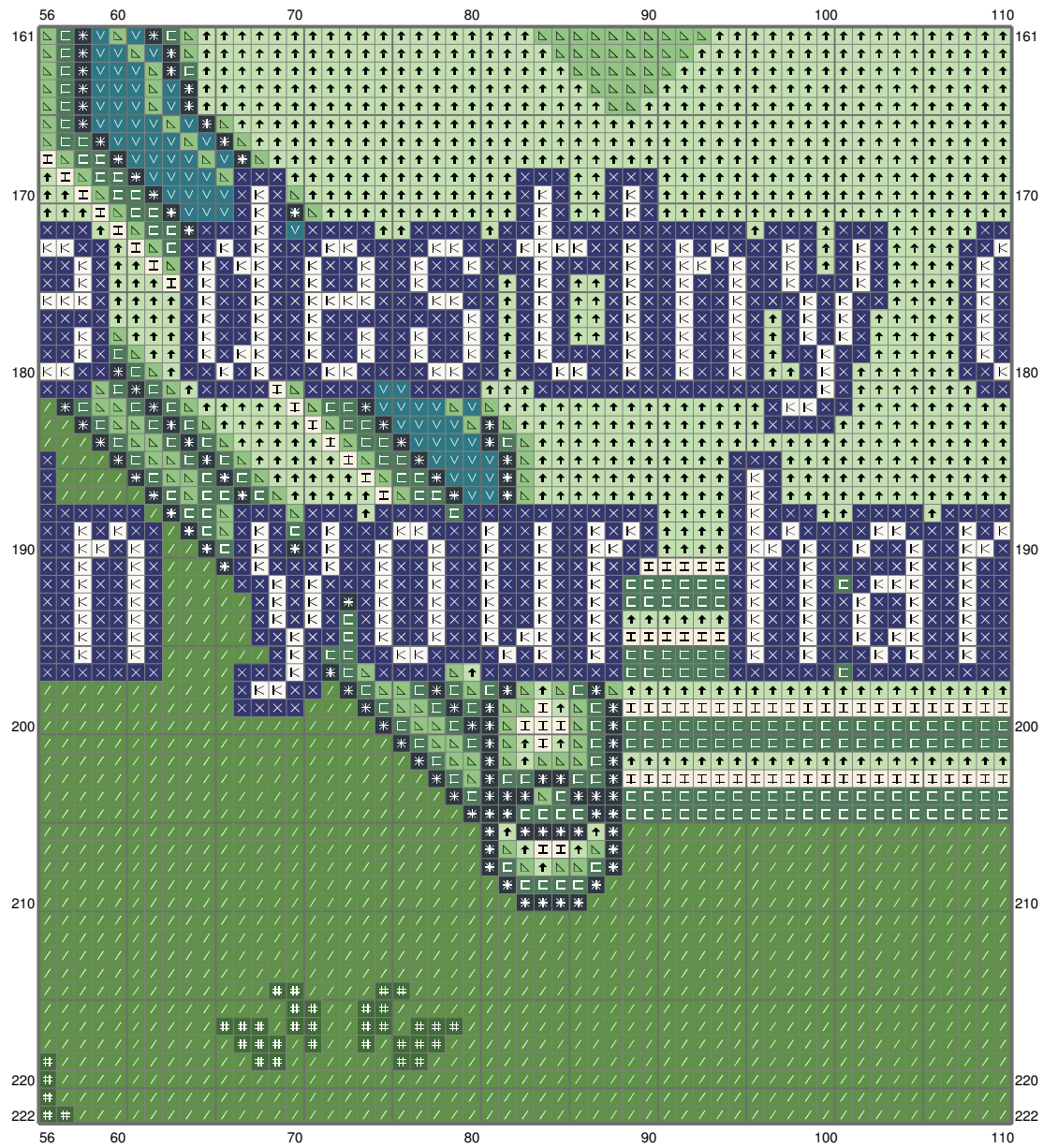
Untitled



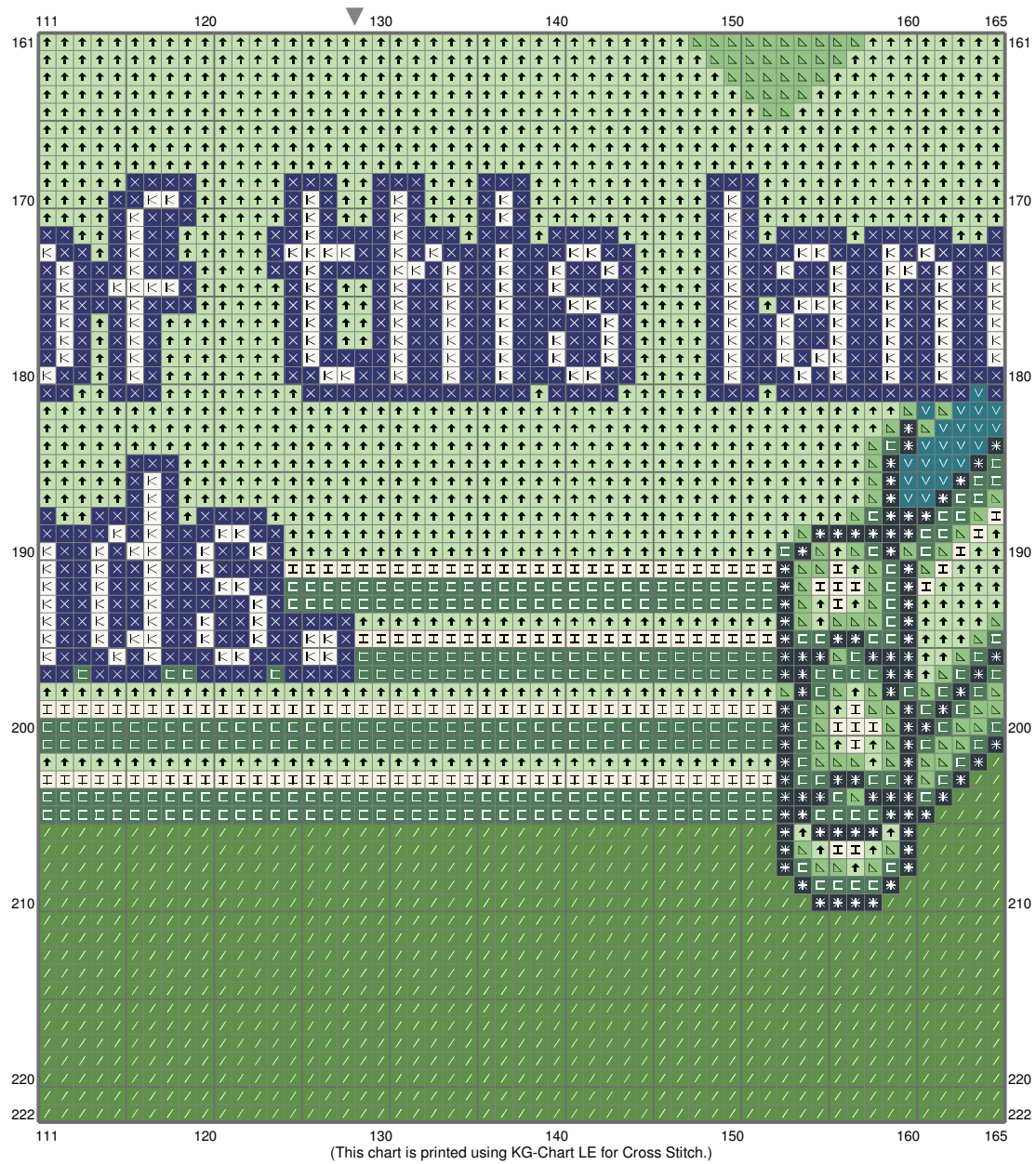
Untitled



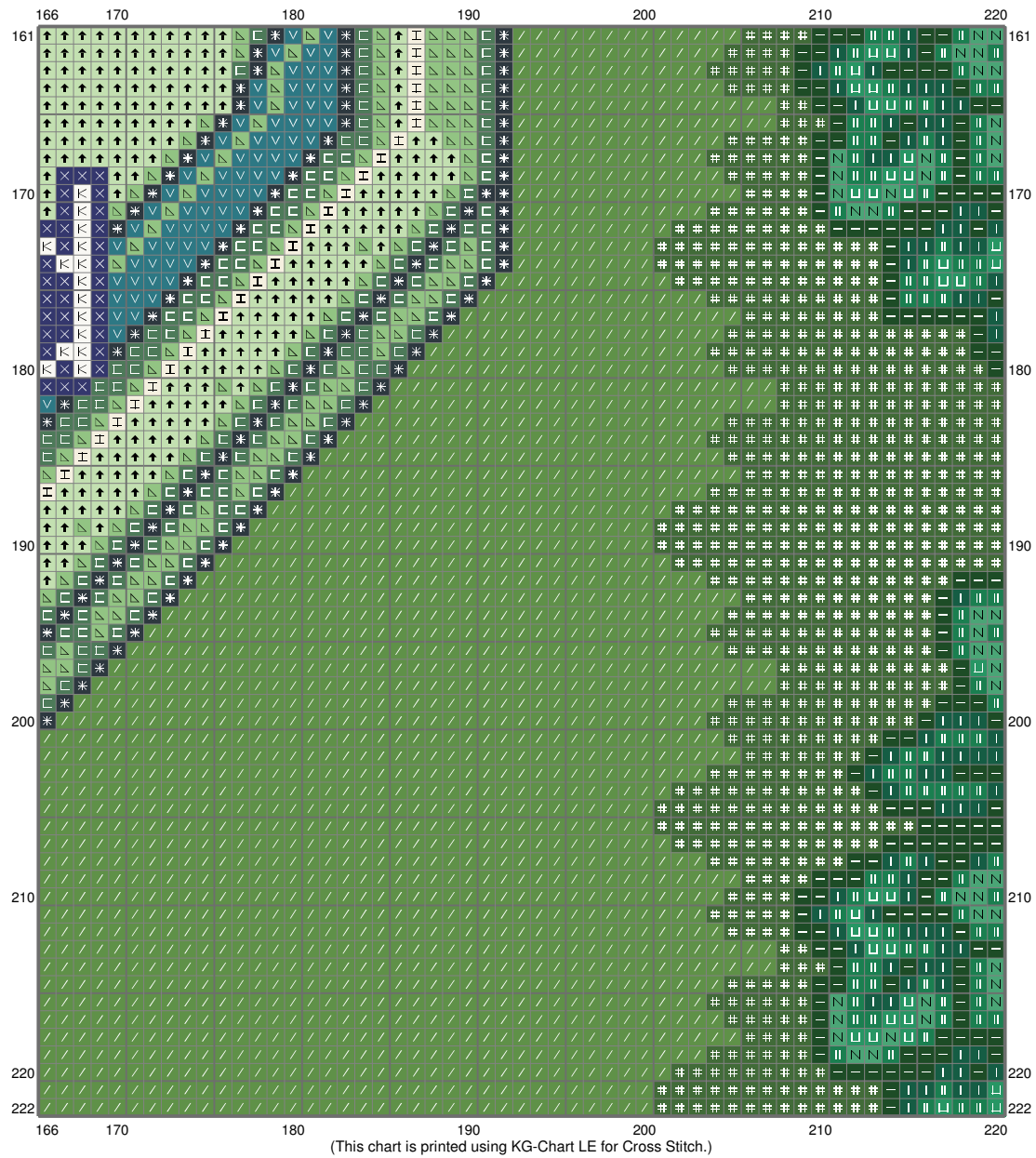
Untitled



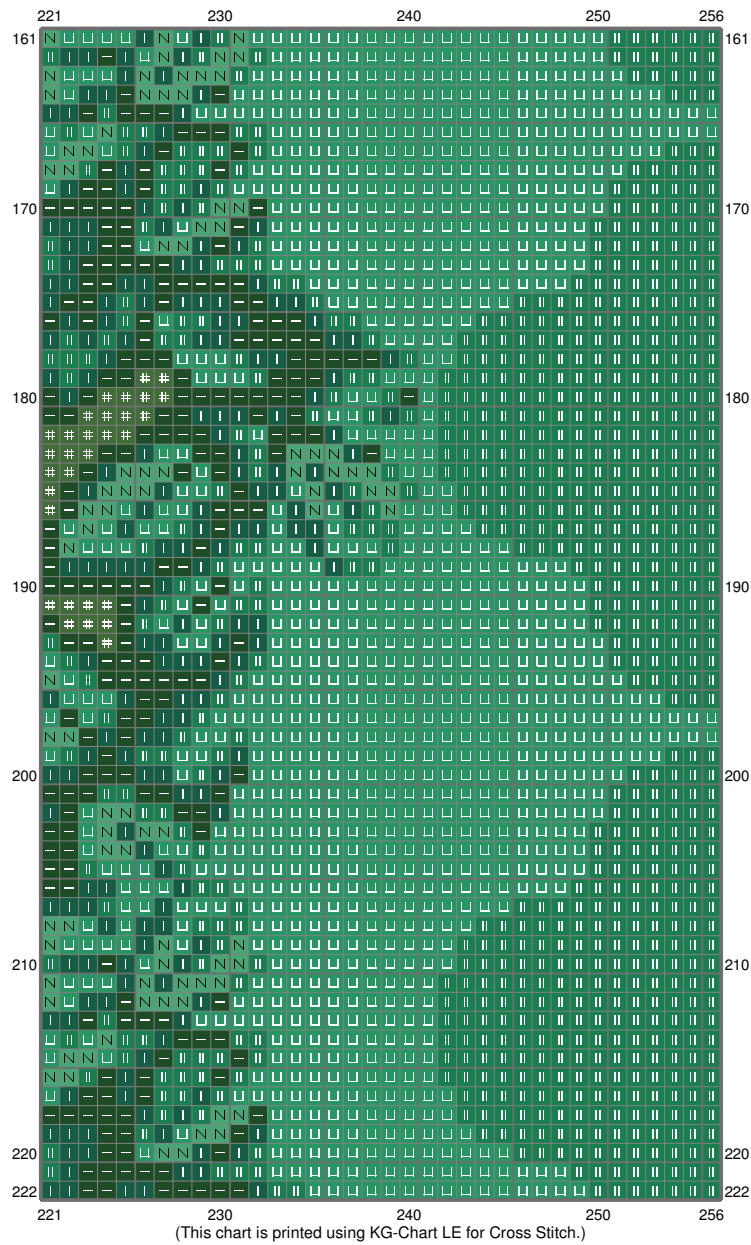
Untitled



Untitled



Untitled








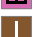




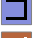























Untitled

Stitch Count: 256w x 222h
 Finished Size: 72.24 cm x 62.65 cm (18 ct./inch)
 Cloth: Aida
 Cloth's Color: White
 # of colors: 34 Colors

Color Table (DMC)

Cross Stitch

	321	(5 ct)		164	(7518 ct)
	470	(6 ct)		988	(11995 ct)
	3022	(8 ct)			
	964	(10 ct)			
	740	(12 ct)			
	3607	(13 ct)			
	869	(14 ct)			
	825	(21 ct)			
	469	(21 ct)			
	3820	(22 ct)			
	505	(22 ct)			
	3839	(33 ct)			
	975	(37 ct)			
	955	(60 ct)			
	939	(121 ct)			
	817	(133 ct)			
	3852	(142 ct)			
	701	(266 ct)			
	746	(406 ct)			
	310	(681 ct)			
	912	(727 ct)			
	3809	(825 ct)			
	500	(1136 ct)			
	3865	(1166 ct)			
	311	(1322 ct)			
	367	(1661 ct)			
	368	(1819 ct)			
	319	(2955 ct)			
	910	(4960 ct)			
	911	(5819 ct)			
	986	(5936 ct)			
	699	(6960 ct)			