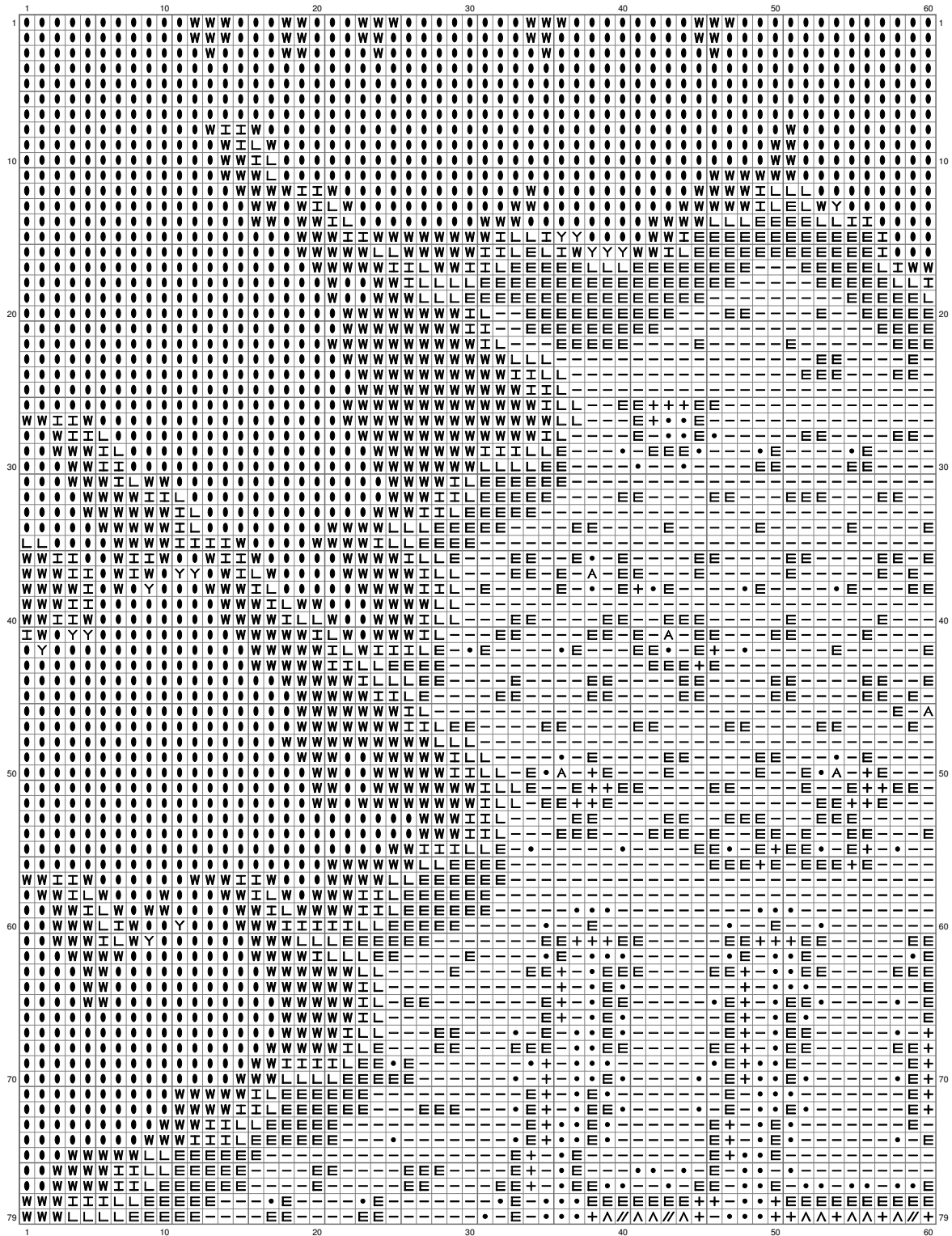
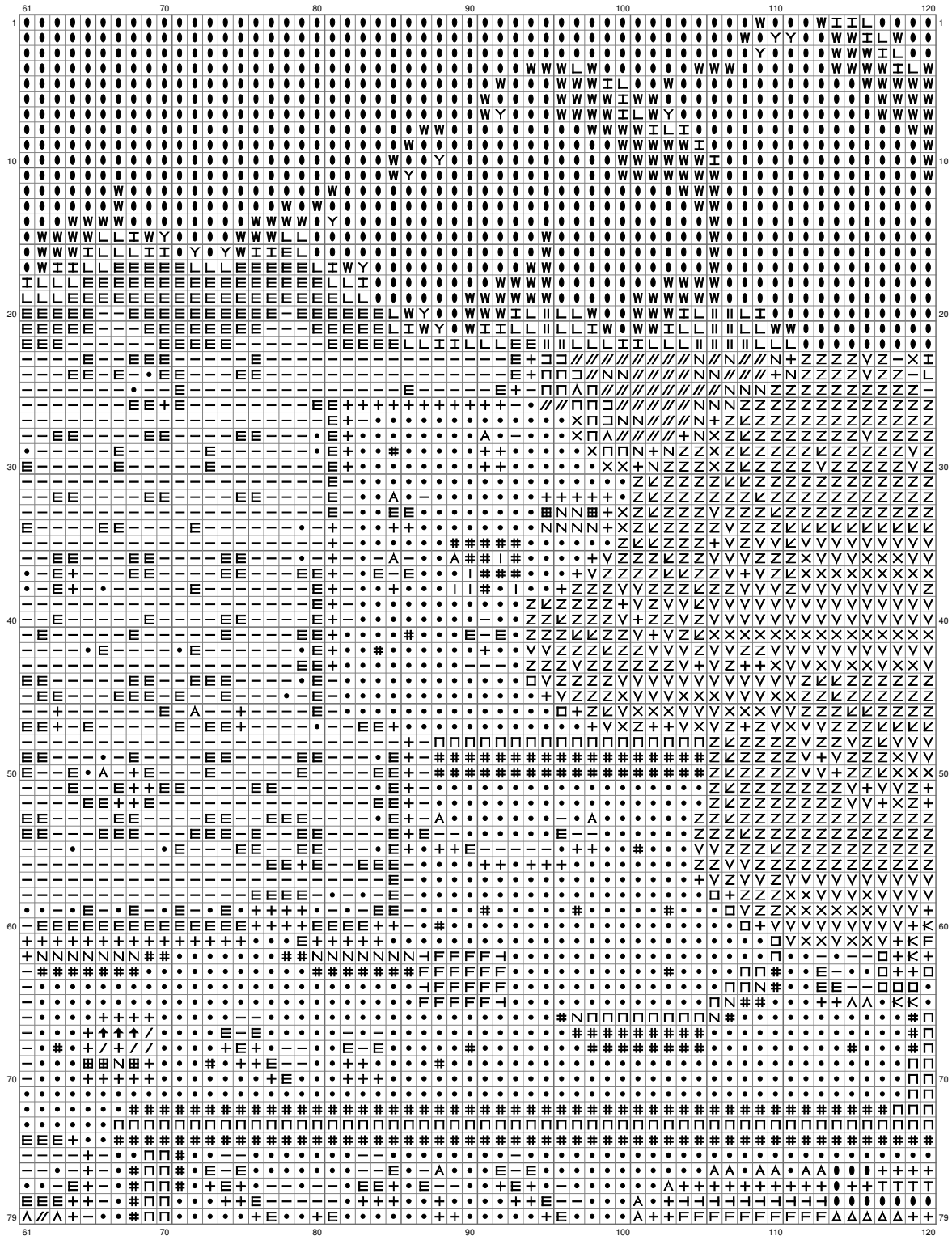


Untitled



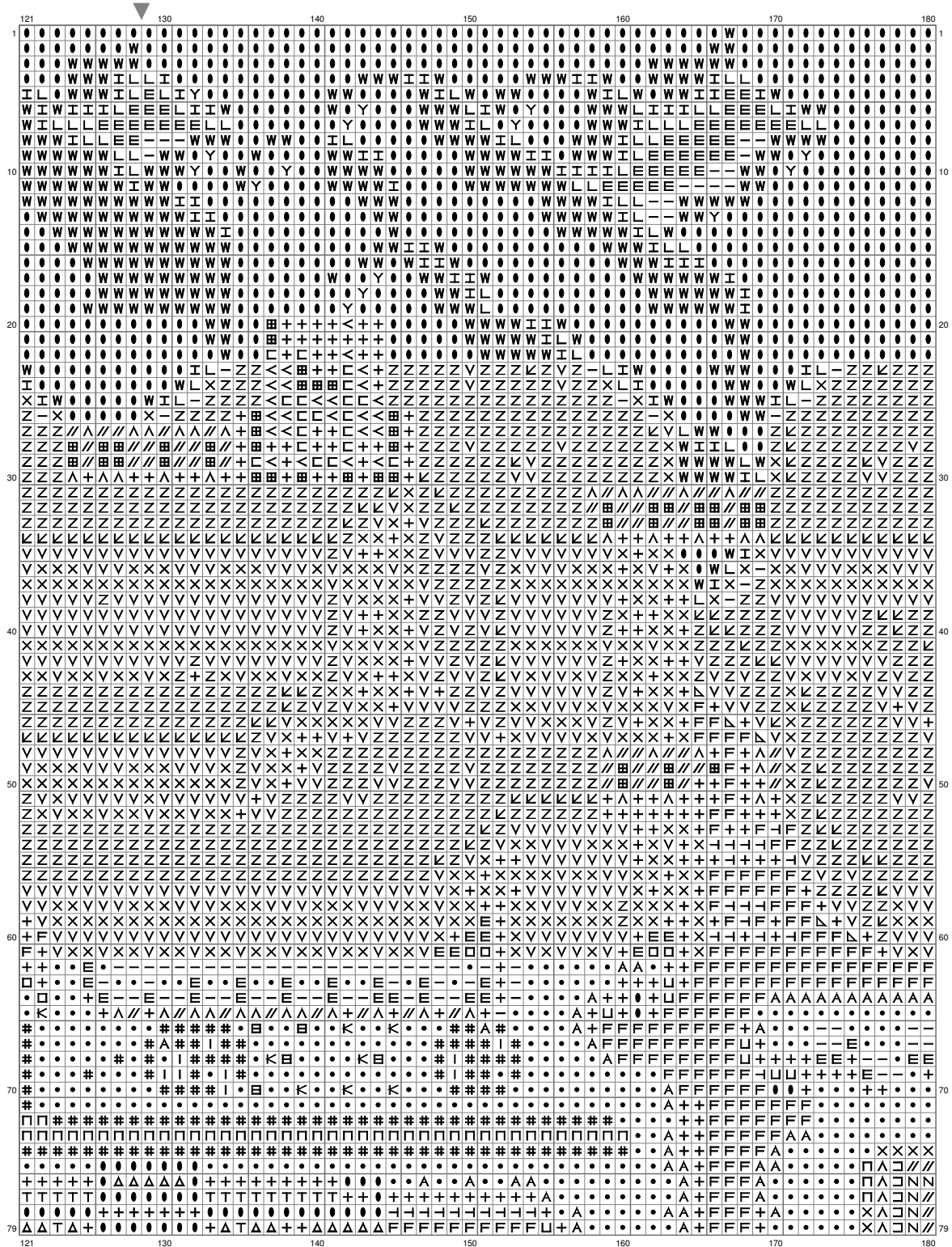
(This chart is printed using KG-Chart LE for Cross Stitch.)

Untitled



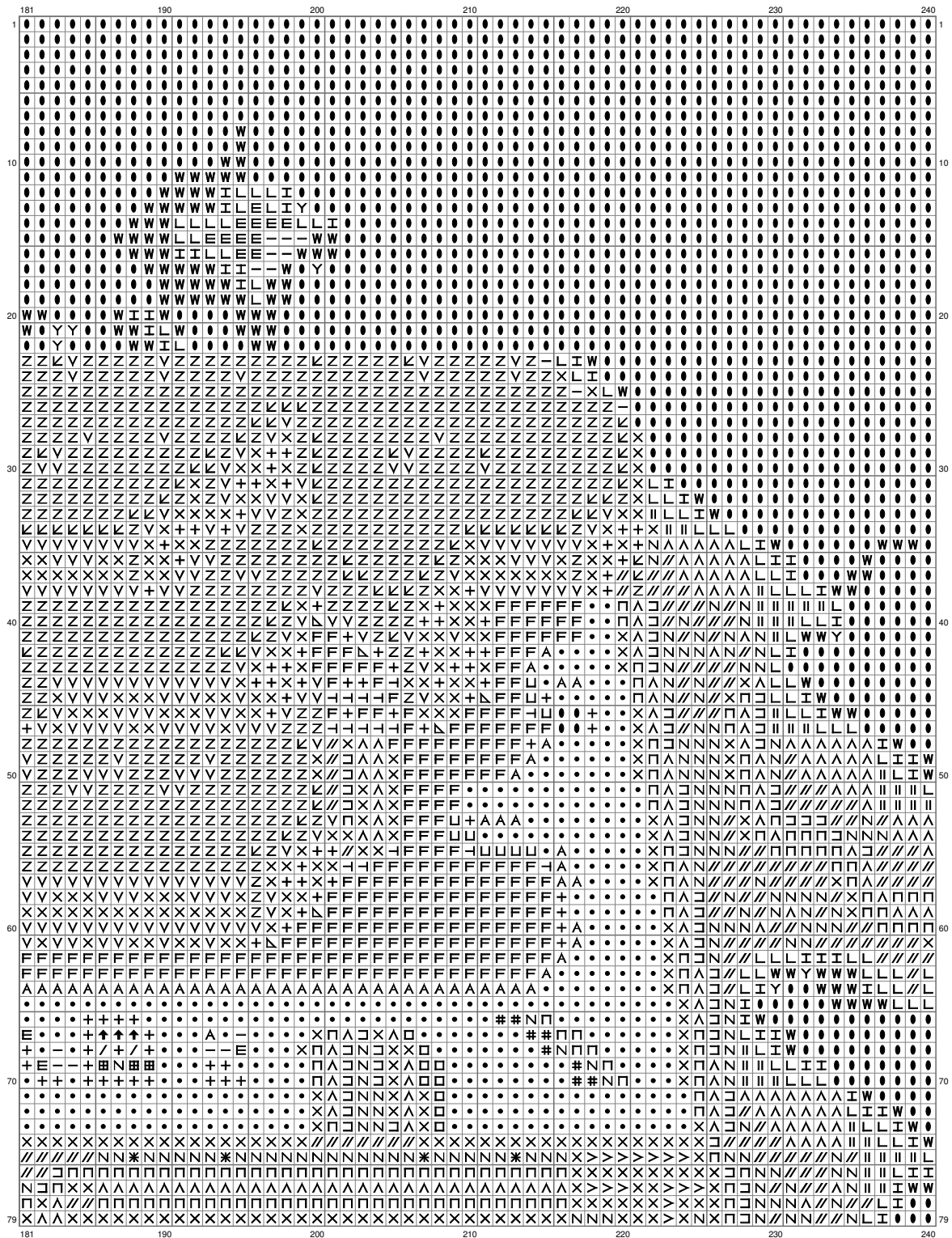
(This chart is printed using KG-Chart LE for Cross Stitch.)

Untitled



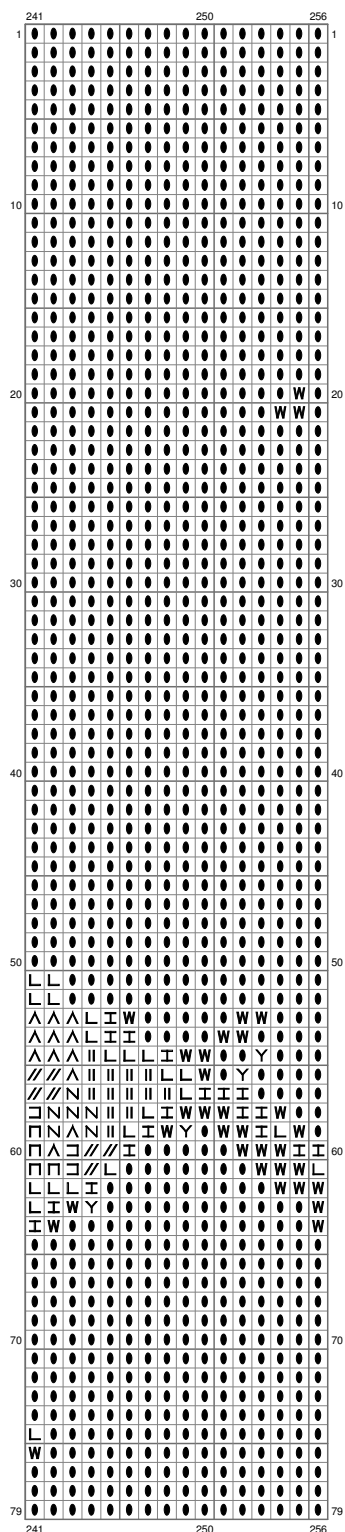
(This chart is printed using KG-Chart LE for Cross Stitch.)

Untitled



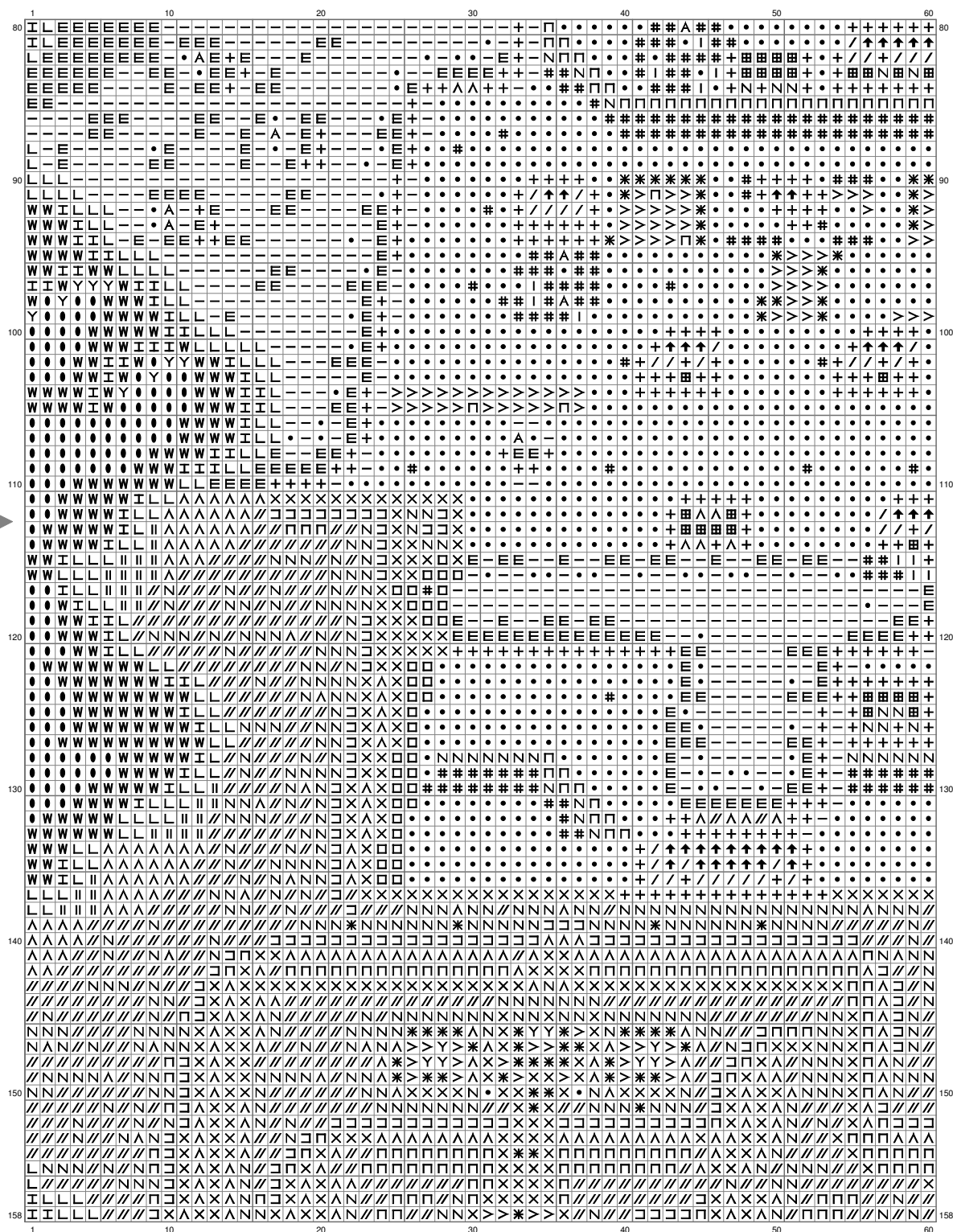
(This chart is printed using KG-Chart LE for Cross Stitch.)

Untitled



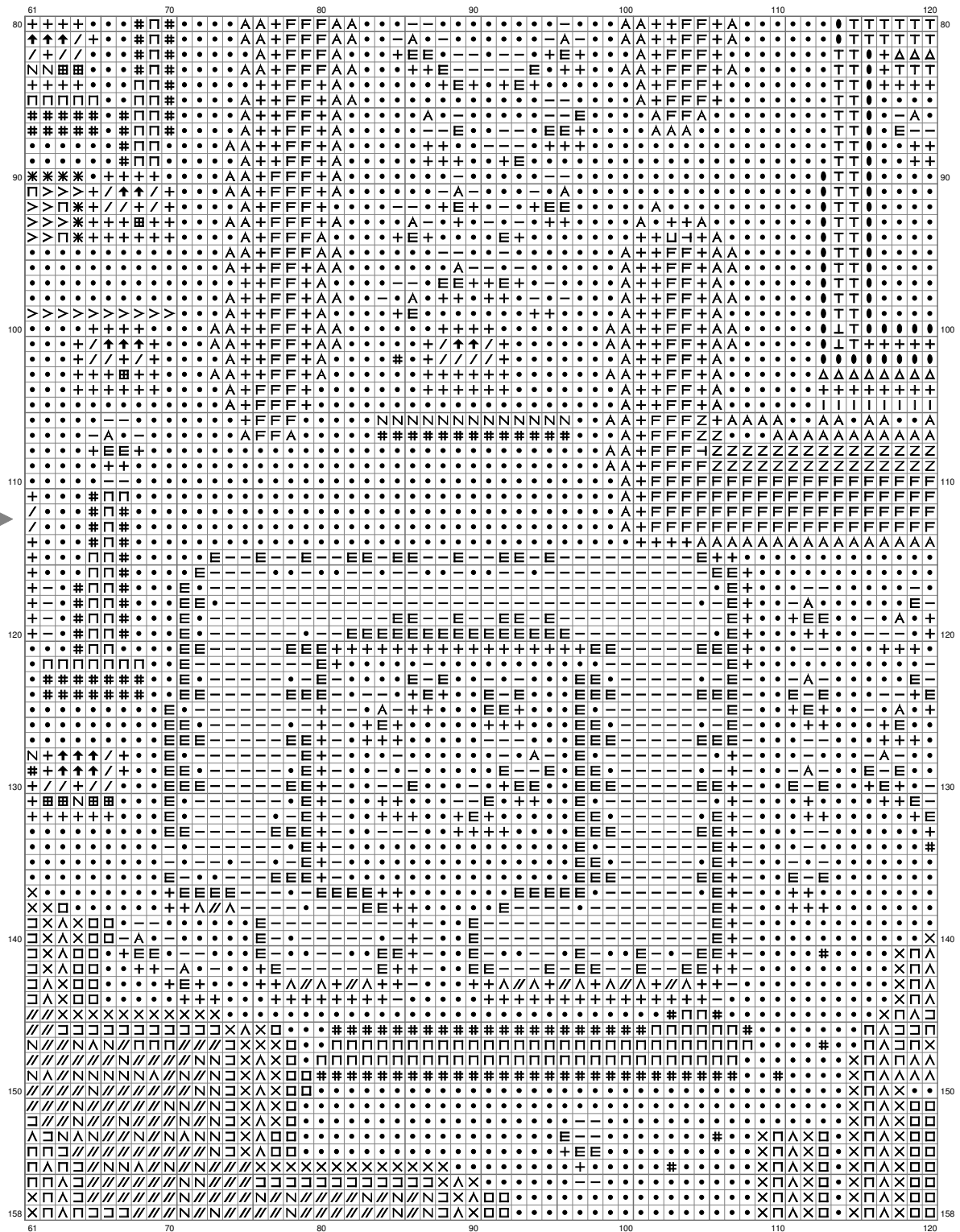
(This chart is printed using KG Chart LE for Cross Stitch.)

Untitled



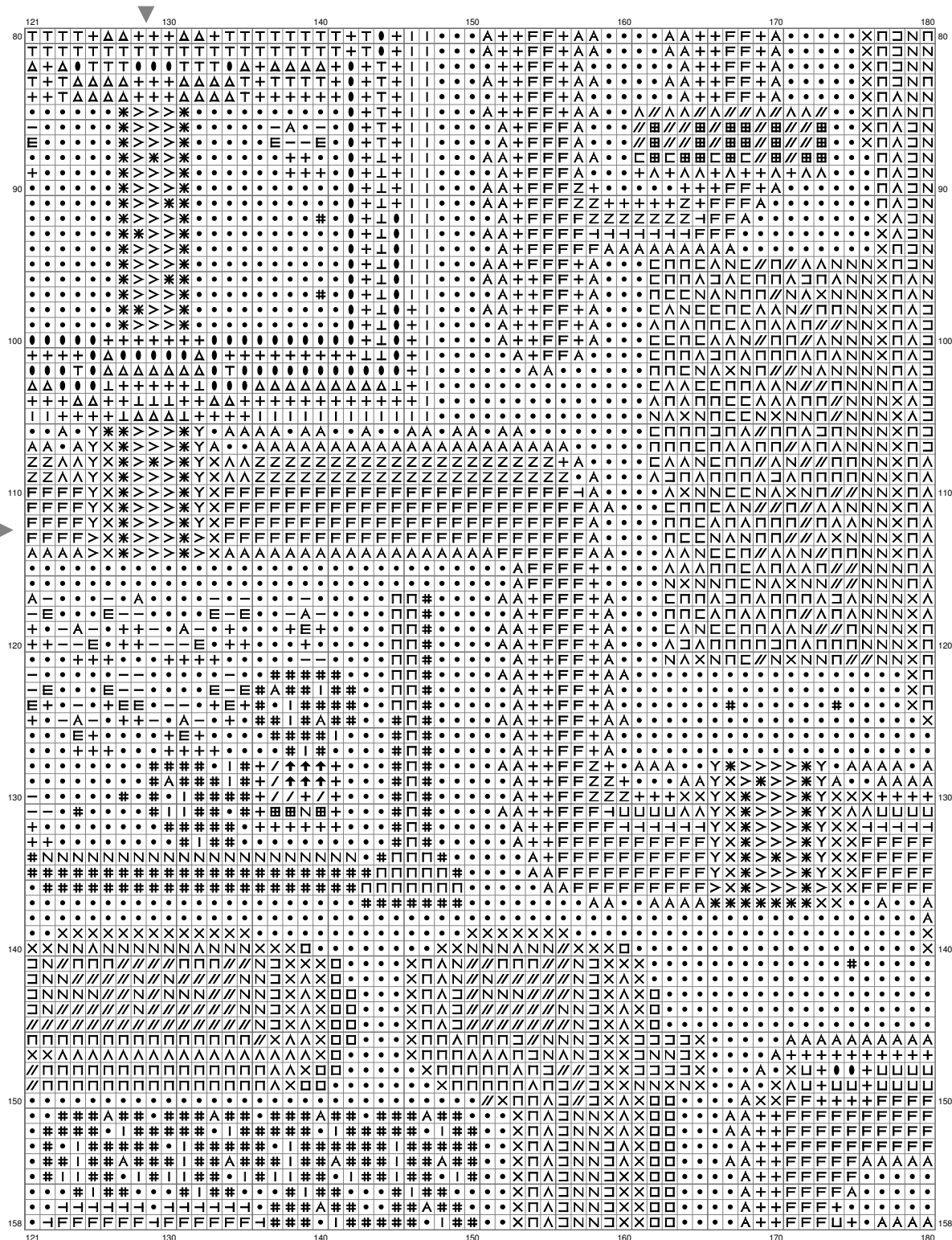
(This chart is printed using KG Chart LE for Cross Stitch.)

Untitled



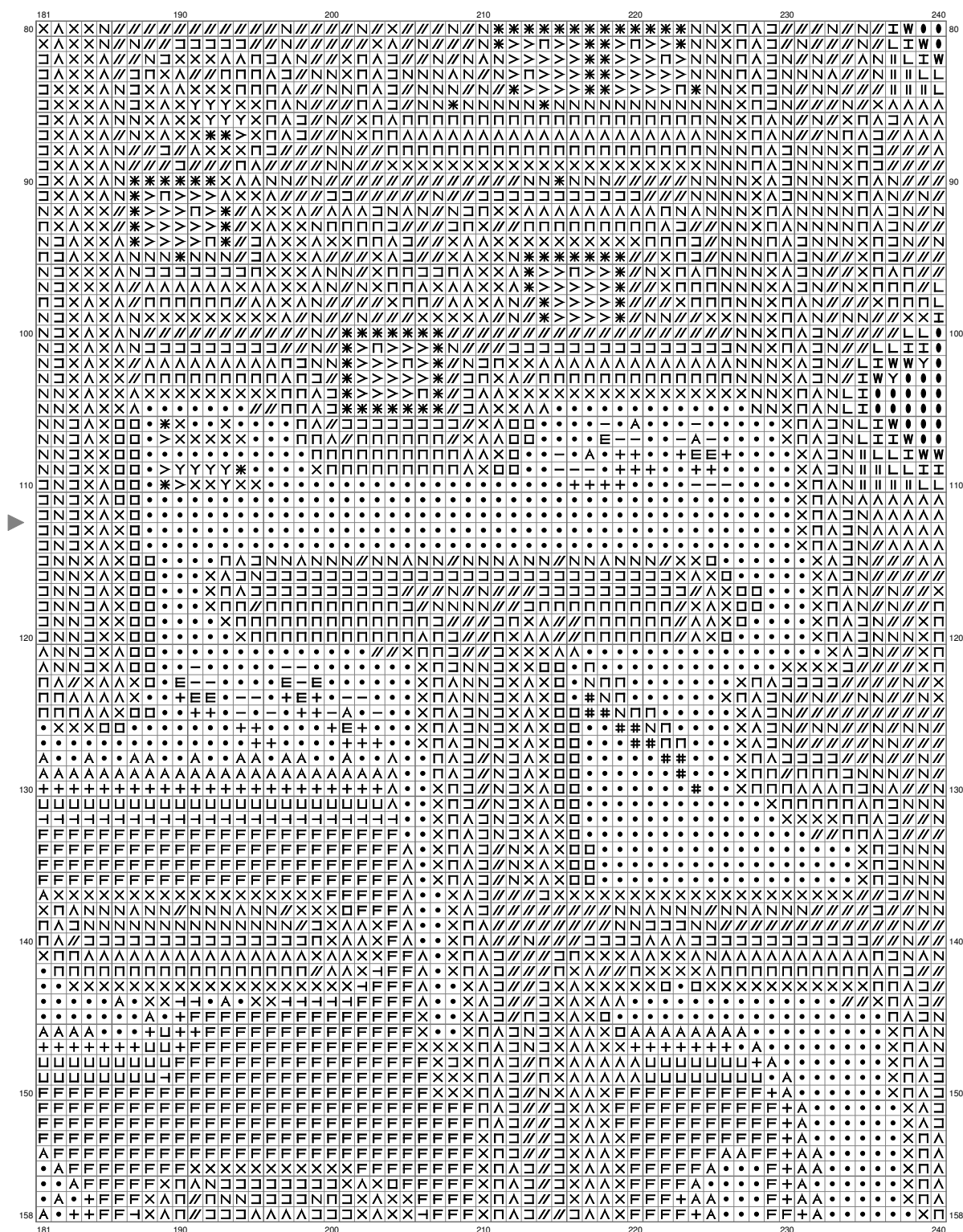
(This chart is printed using KG-Chart LE for Cross Stitch.)

Untitled



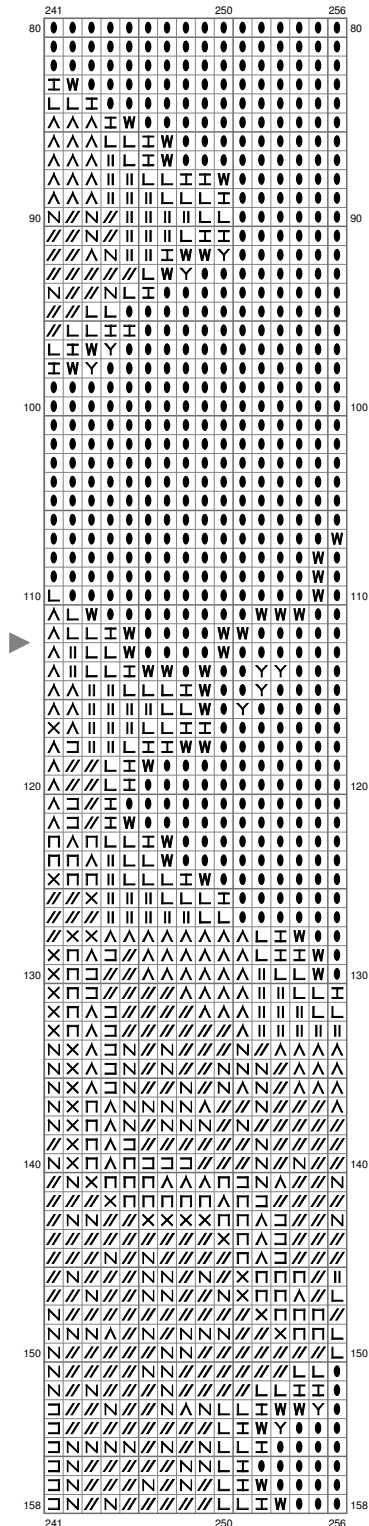
(This chart is printed using KG Chart LE for Cross Stitch.)

Untitled



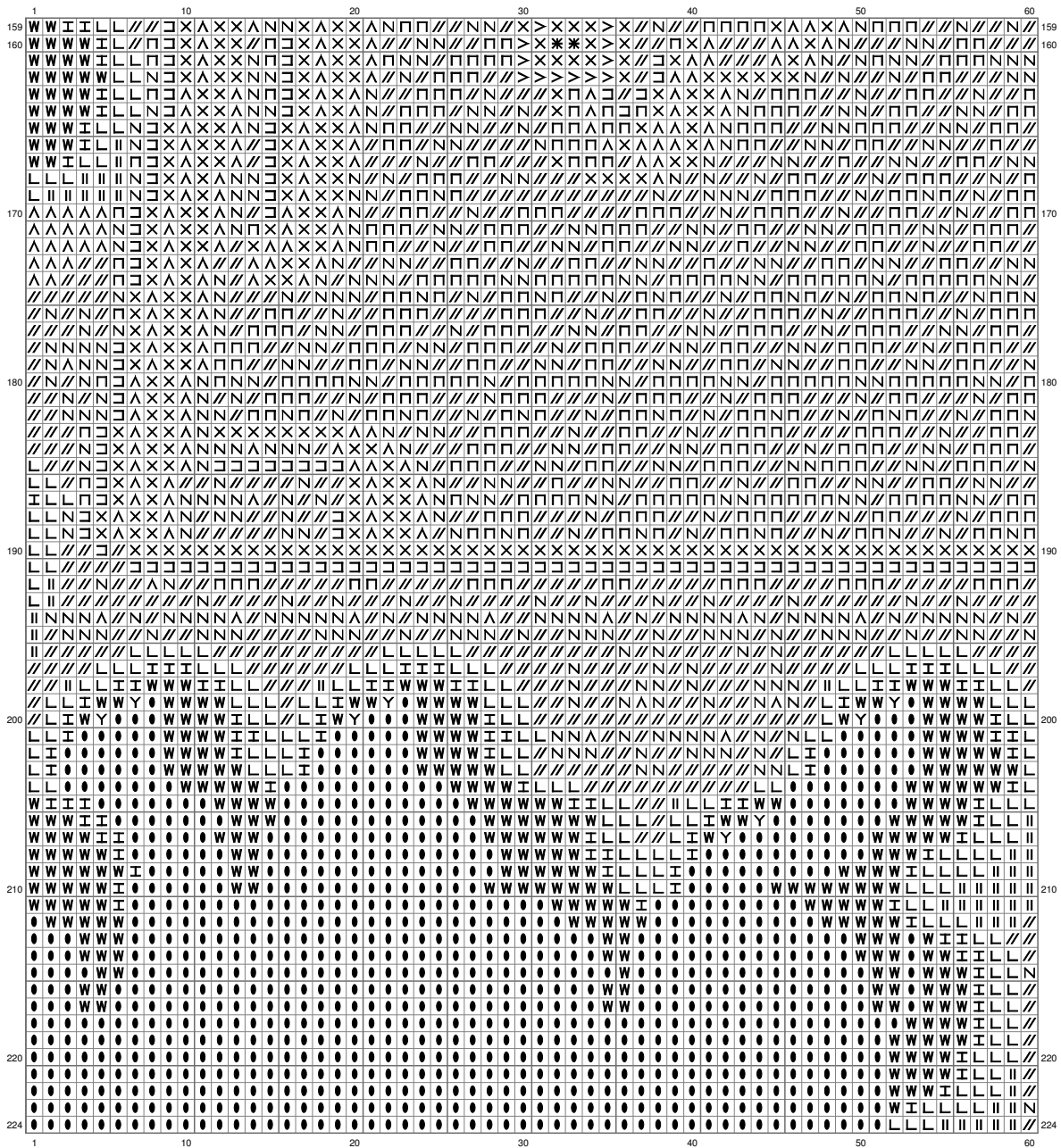
(This chart is printed using KG Chart LE for Cross Stitch.)

Untitled



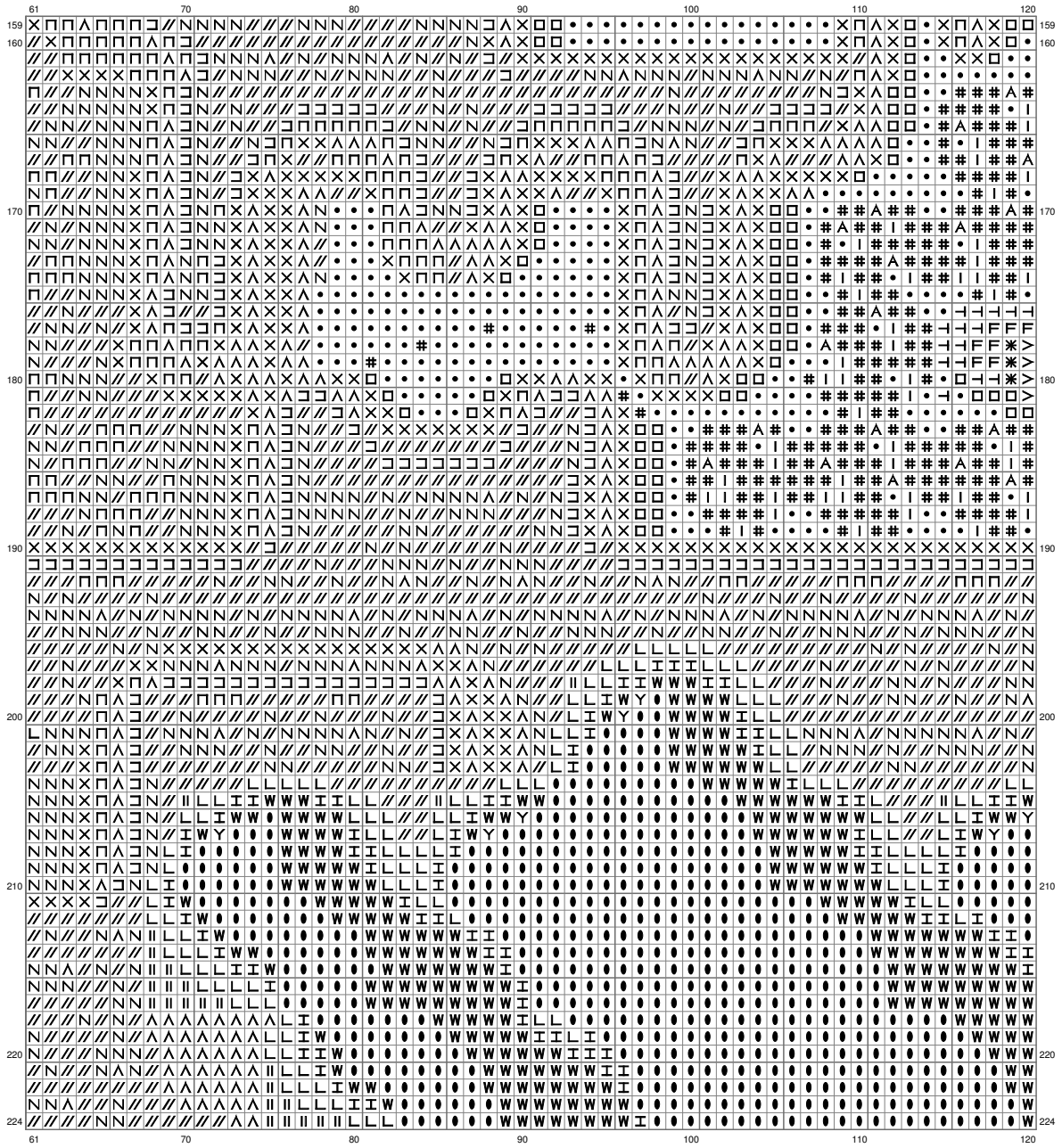
(This chart is printed using KG-Chart LE for Cross Stitch.)

Untitled



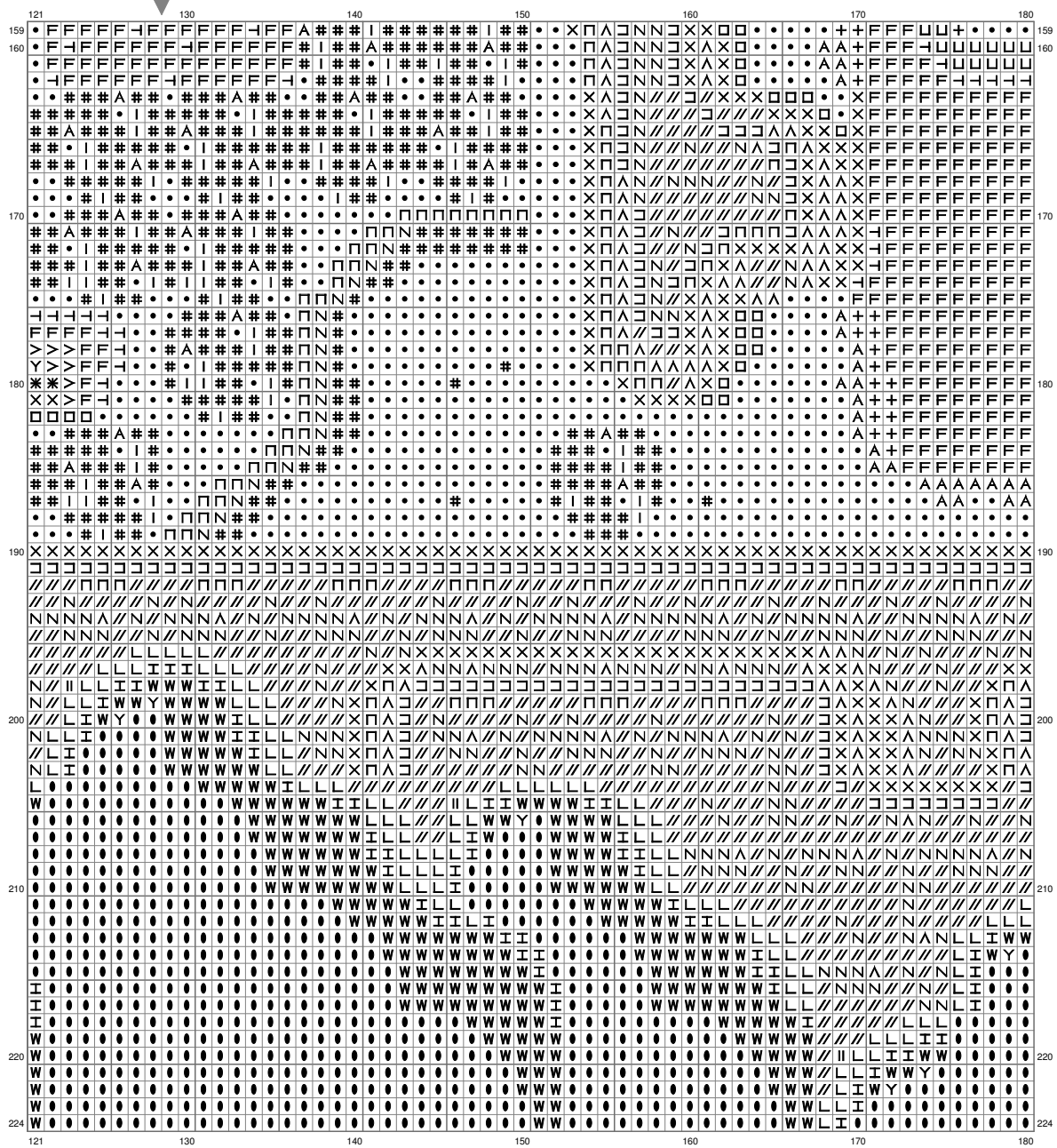
(This chart is printed using KG-Chart LE for Cross Stitch.)

Untitled

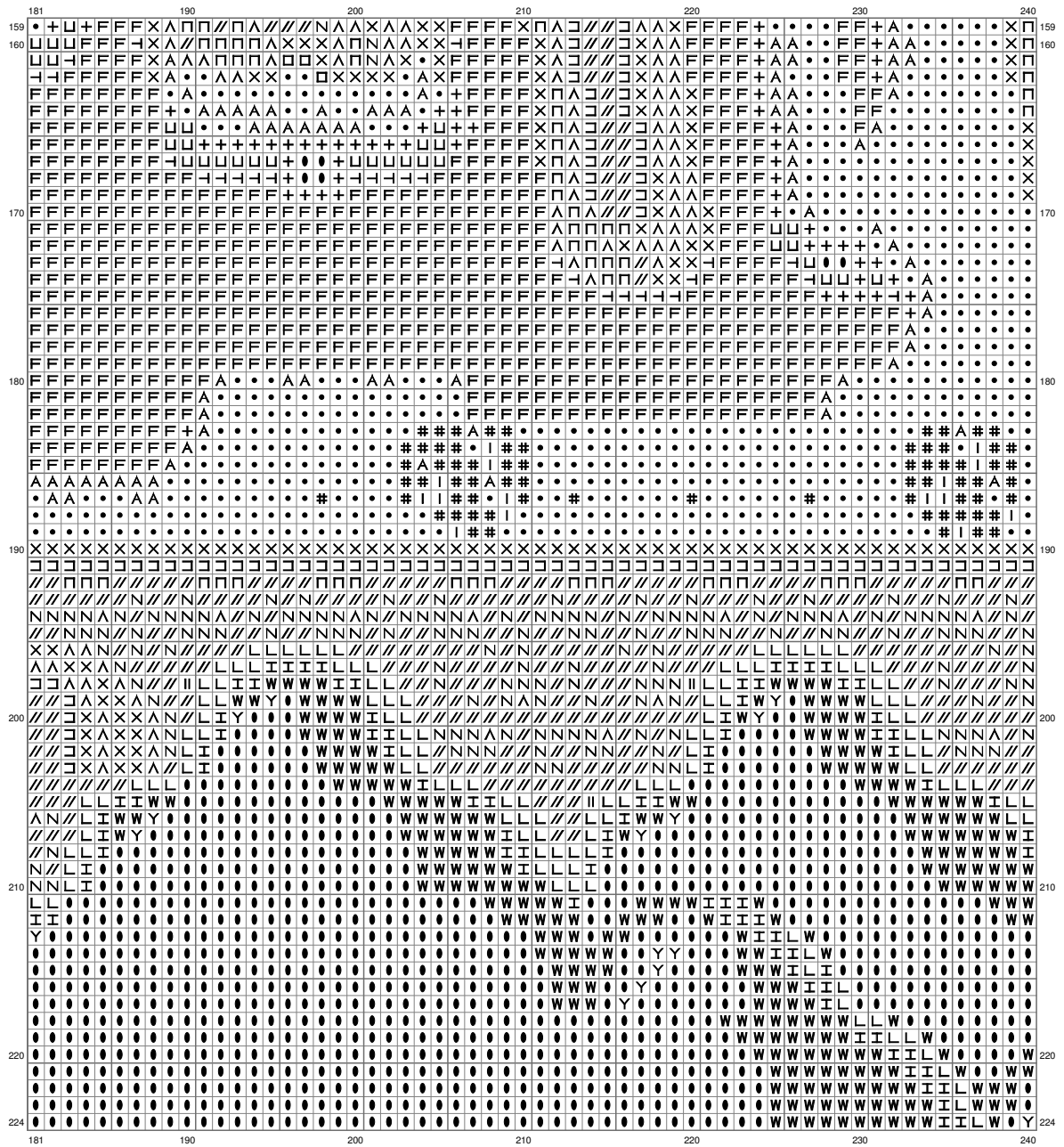


(This chart is printed using KG-Chart LE for Cross Stitch.)

Untitled

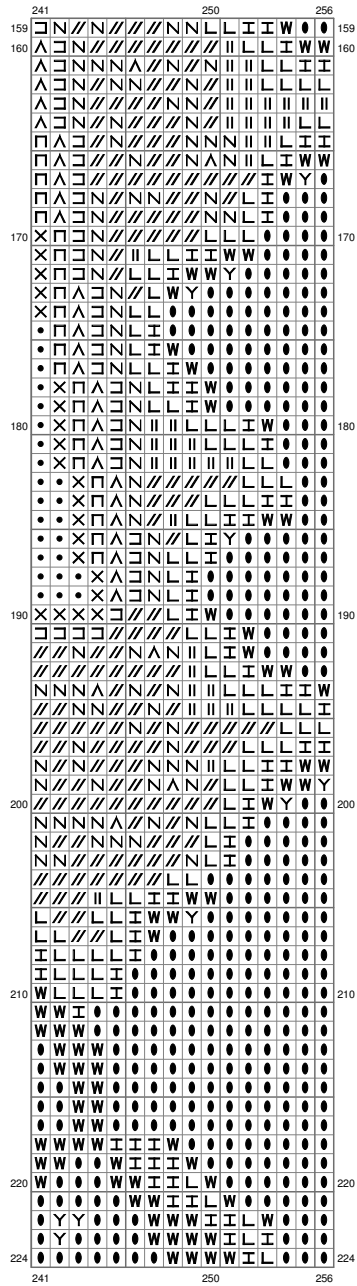


Untitled



(This chart is printed using KG-Chart LE for Cross Stitch.)

Untitled



(This chart is printed using KG-Chart LE for Cross Stitch.)

Untitled

Stitch Count: 256w x 224h

Finished Size: 29.55 cm x 25.86 cm (44 ct./inch)
































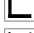





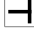

Cloth: Aida

Cloth's Color: Black

of colors: 39 Colors

Color Table (DMC)

Cross Stitch

| | | | | | |
|-------------------------------------------------------------------------------------|-----|-----------|-------------------------------------------------------------------------------------|------|------------|
|  | 150 | (74 ct) |  | 906 | (826 ct) |
|  | 156 | (11 ct) |  | 910 | (3372 ct) |
|  | 168 | (13 ct) |  | 924 | (131 ct) |
|  | 300 | (906 ct) |  | 931 | (86 ct) |
|  | 319 | (1541 ct) |  | 938 | (2905 ct) |
|  | 367 | (247 ct) |  | 966 | (337 ct) |
|  | 370 | (2244 ct) |  | 975 | (25 ct) |
|  | 415 | (2736 ct) |  | 986 | (260 ct) |
|  | 420 | (4378 ct) |  | 988 | (8876 ct) |
|  | 434 | (1903 ct) |  | 3607 | (5 ct) |
|  | 610 | (278 ct) |  | 3712 | (62 ct) |
|  | 699 | (339 ct) |  | 3752 | (1325 ct) |
|  | 701 | (1575 ct) |  | 3753 | (10423 ct) |
|  | 762 | (172 ct) |  | 3768 | (25 ct) |
|  | 775 | (899 ct) |  | 3828 | (68 ct) |
|  | 780 | (144 ct) |  | 3829 | (2873 ct) |
|  | 834 | (1315 ct) |  | 3843 | (2518 ct) |
|  | 869 | (2016 ct) |  | 3845 | (202 ct) |
|  | 890 | (1876 ct) |  | 3855 | (111 ct) |
| | | |  | 3863 | (247 ct) |