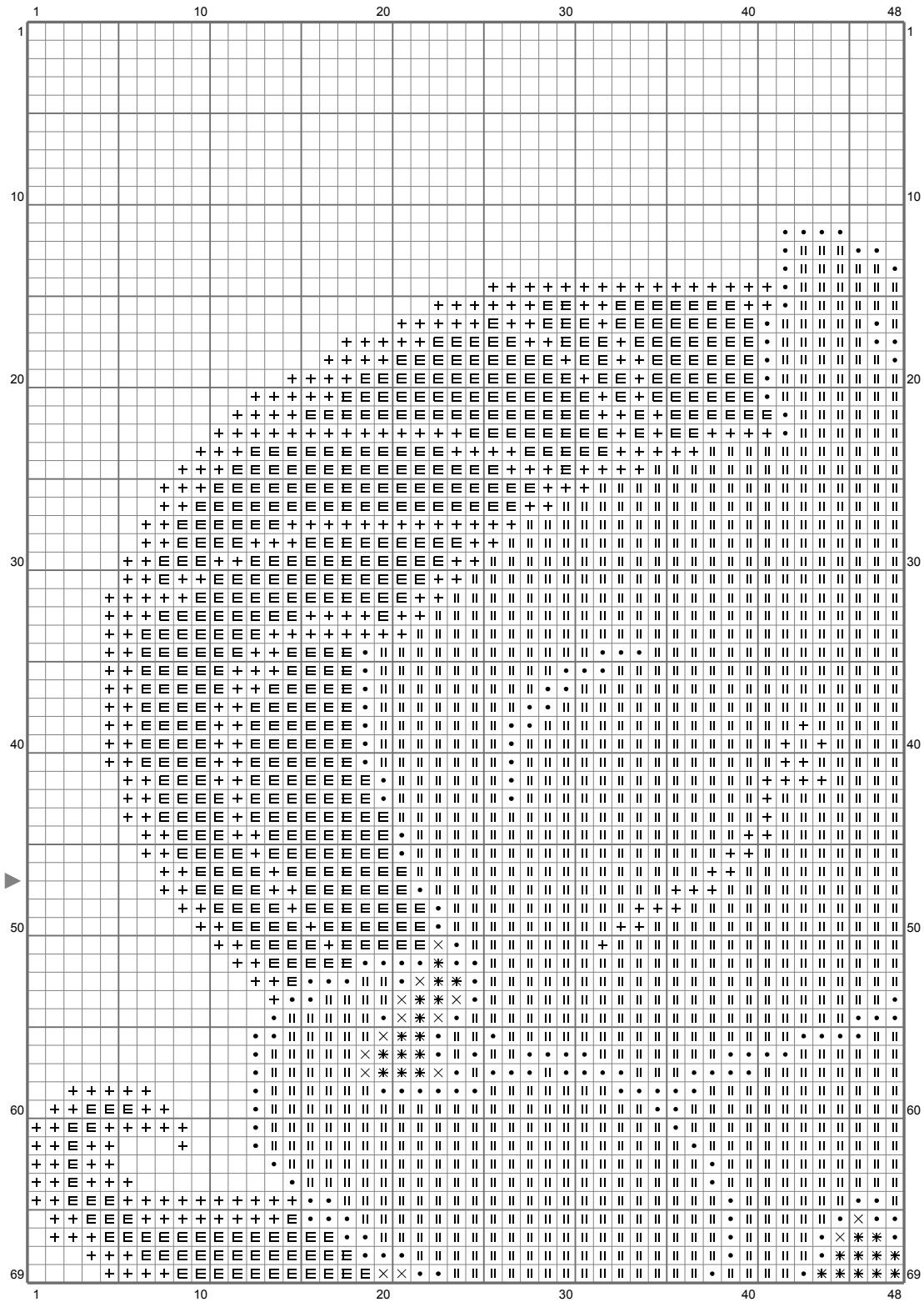
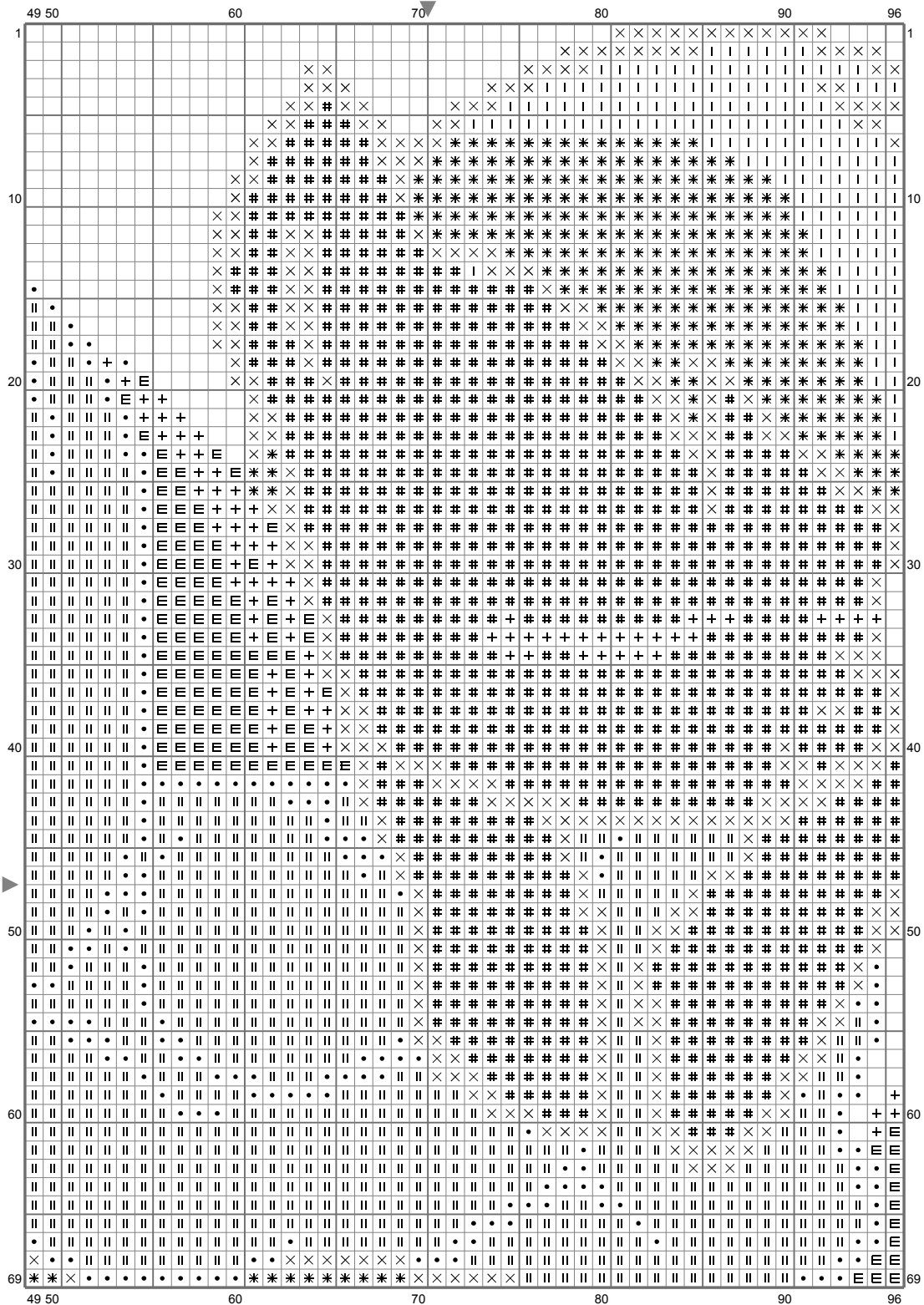


MLP ~Recolour Request~

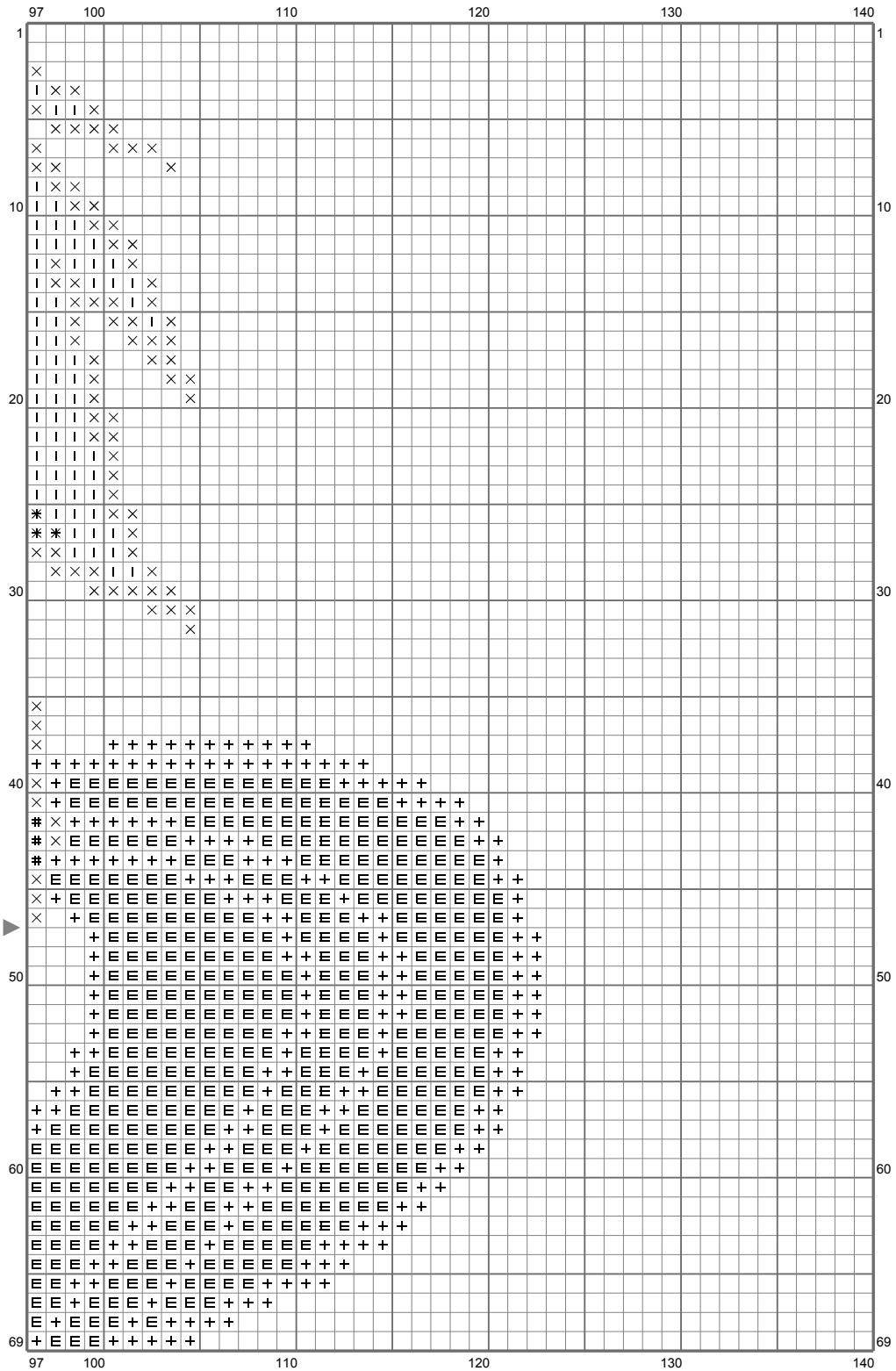


(This chart is printed using KG-Chart LE for Cross Stitch.)

MLP ~Recolour Request~

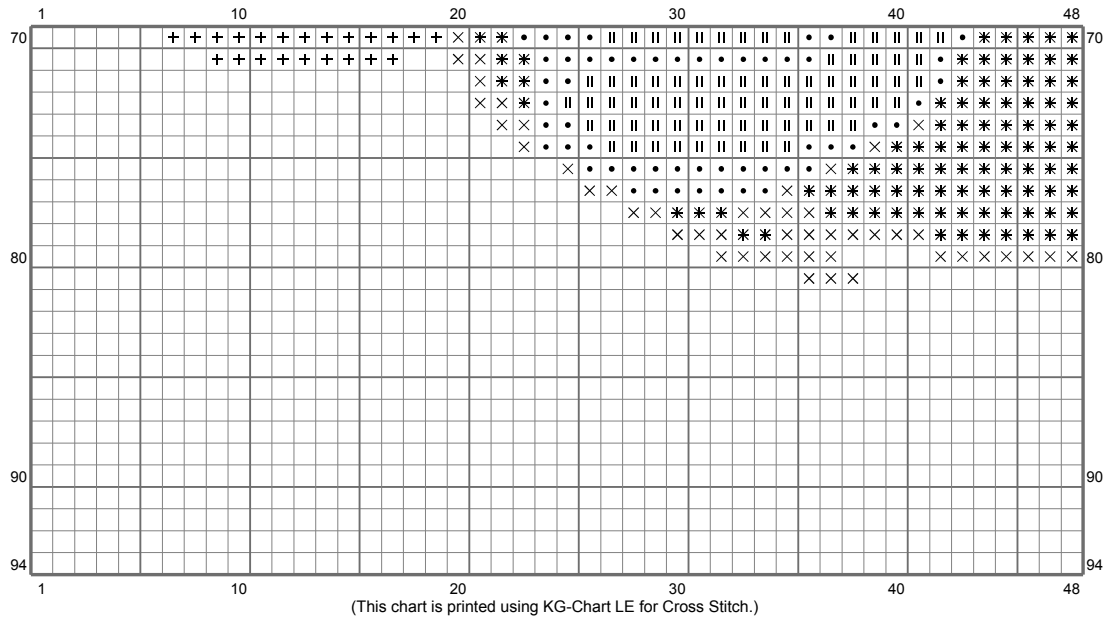


MLP ~Recolour Request~

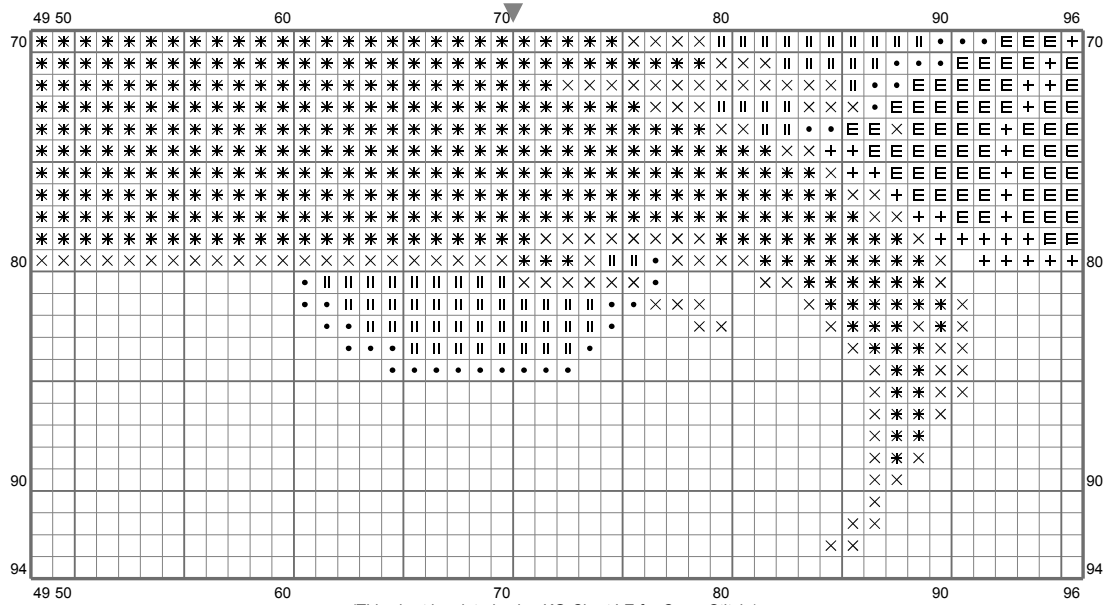


(This chart is printed using KG-Chart LE for Cross Stitch.)

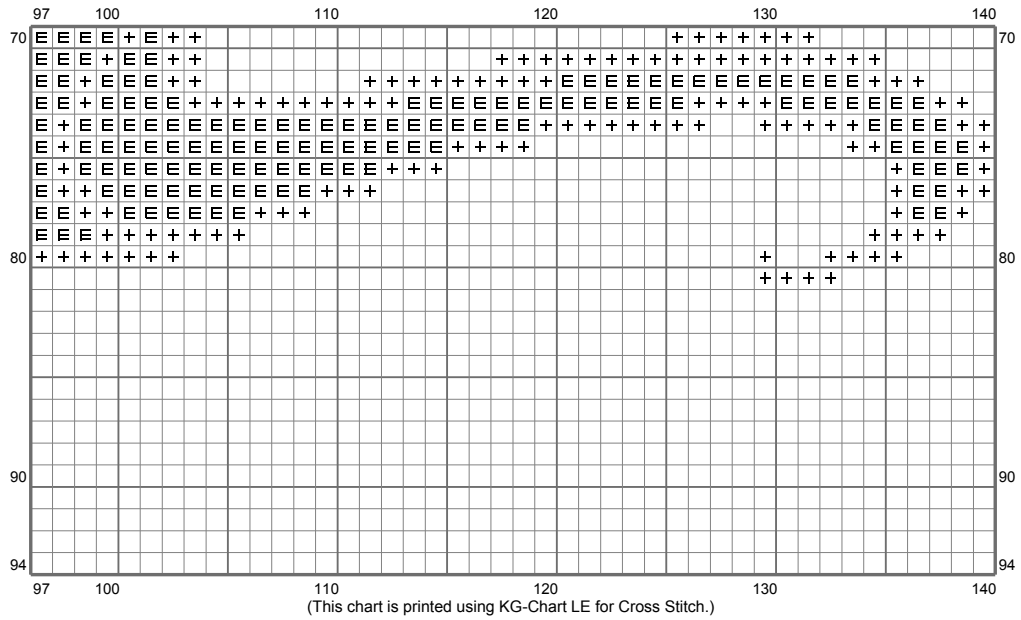
MLP ~Recolour Request~



MLP ~Recolour Request~



MLP ~Recolour Request~



MLP ~Recolour Request~

Stitch Count: 140w x 94h

Finished Size: 25.4 cm x 17.05 cm (14 ct./inch)









Cloth: Aida

Cloth's Color: White

of colors: 8 Colors

Color Table (DMC)

Cross Stitch

| | | |
|---|------|-----------|
|  | 310 | (818 ct) |
|  | 3371 | (1289 ct) |
|  | 355 | (619 ct) |
|  | 349 | (746 ct) |
|  | 356 | (217 ct) |
|  | 3712 | (1037 ct) |
|  | 793 | (433 ct) |
|  | 157 | (2136 ct) |