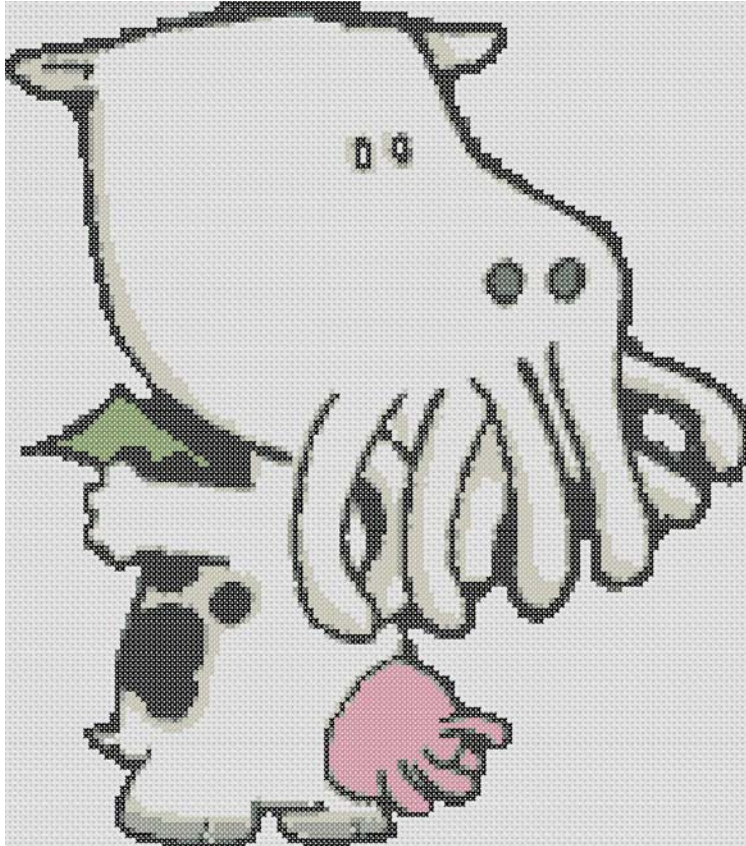
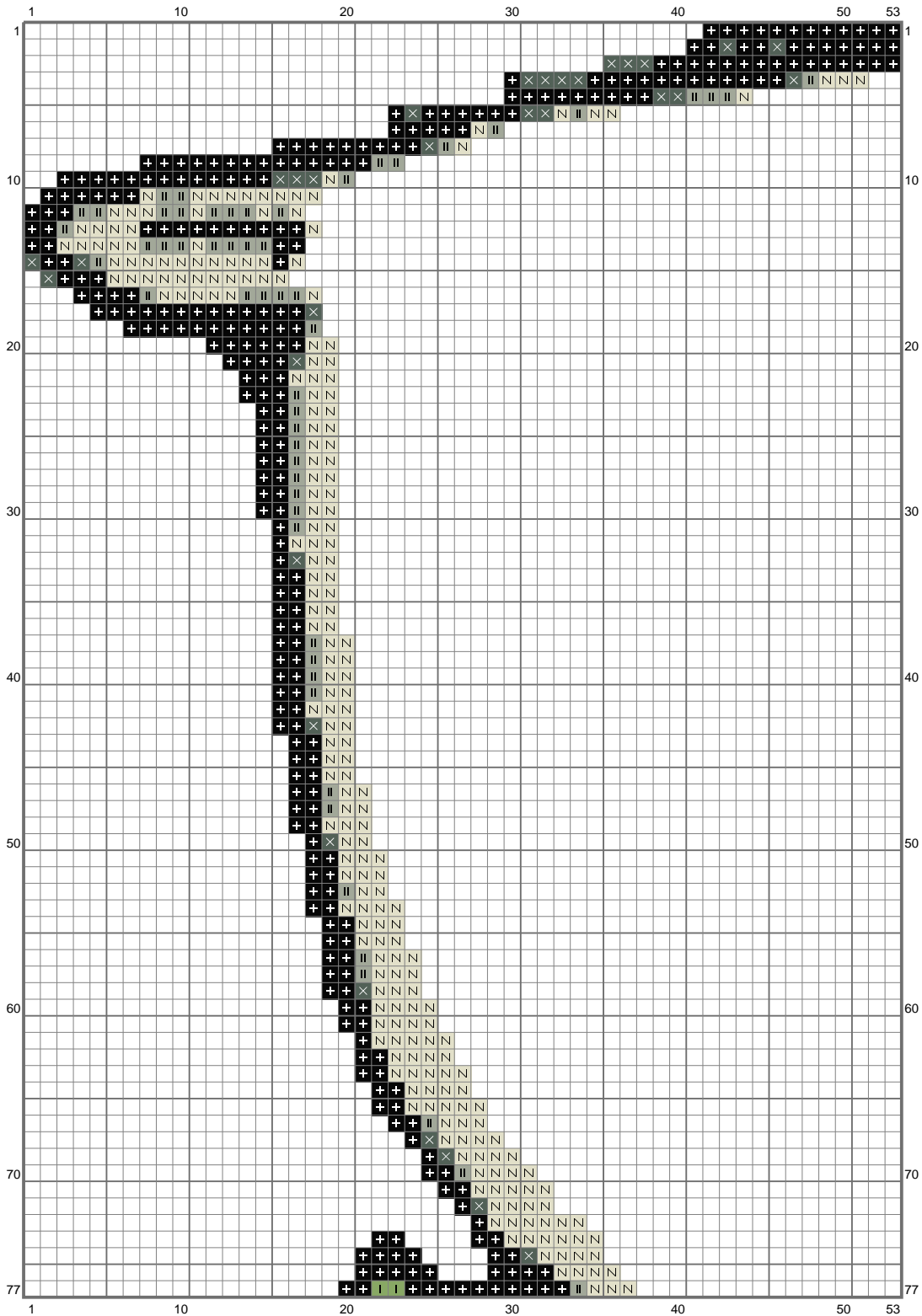


Untitled

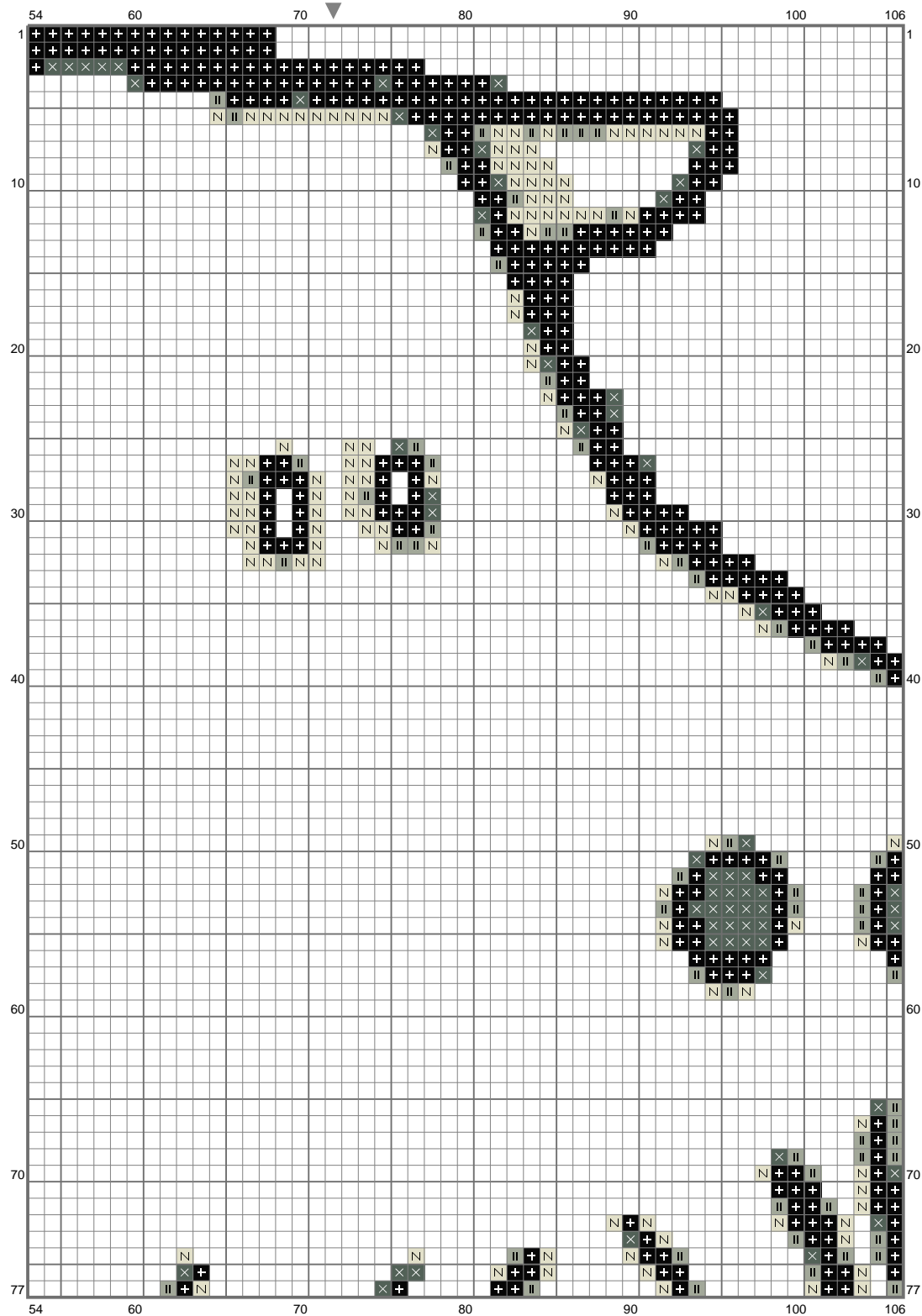


Untitled



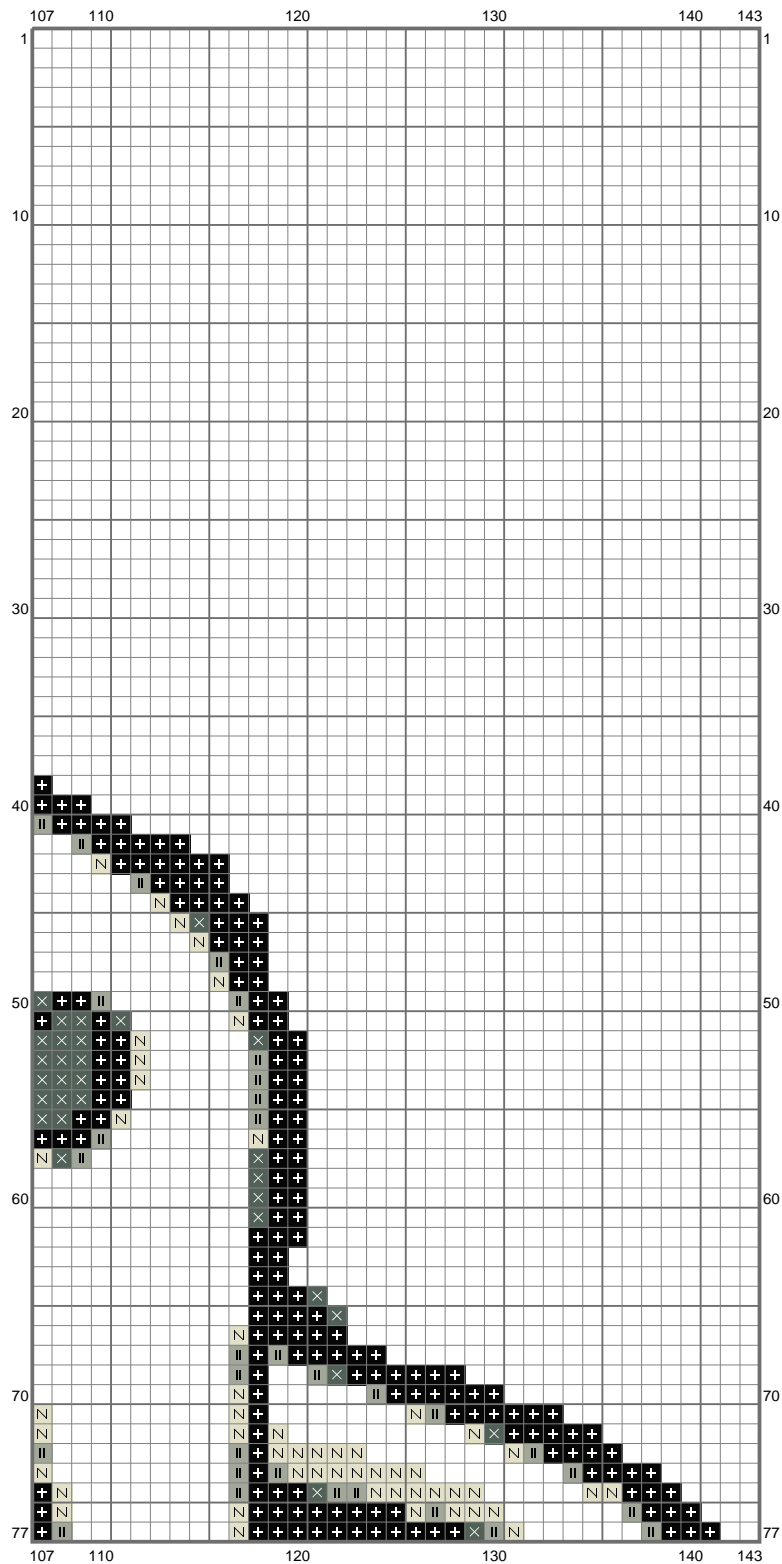
(This chart is printed using KG-Chart LE for Cross Stitch.)

Untitled



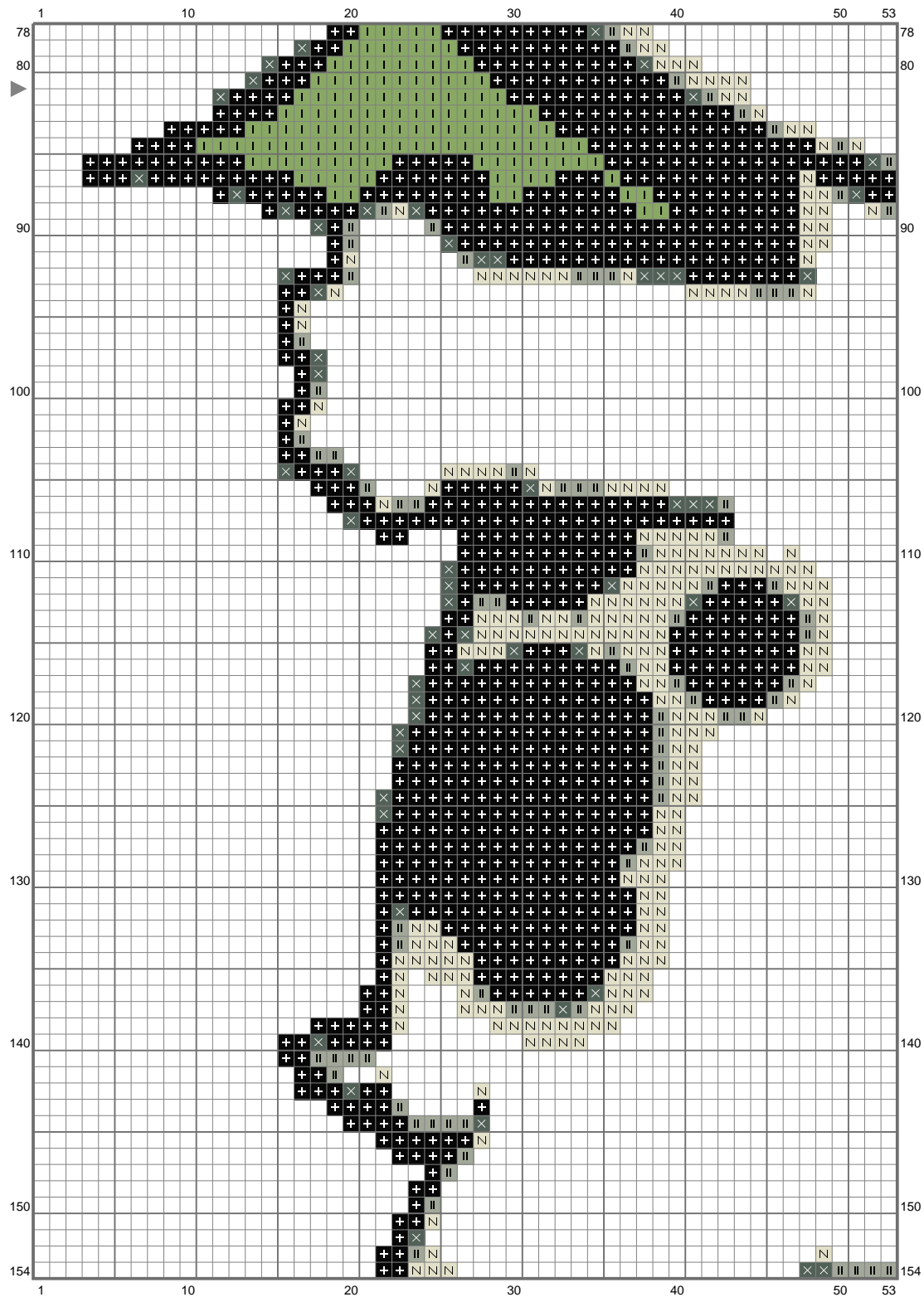
(This chart is printed using KG-Chart LE for Cross Stitch.)

Untitled



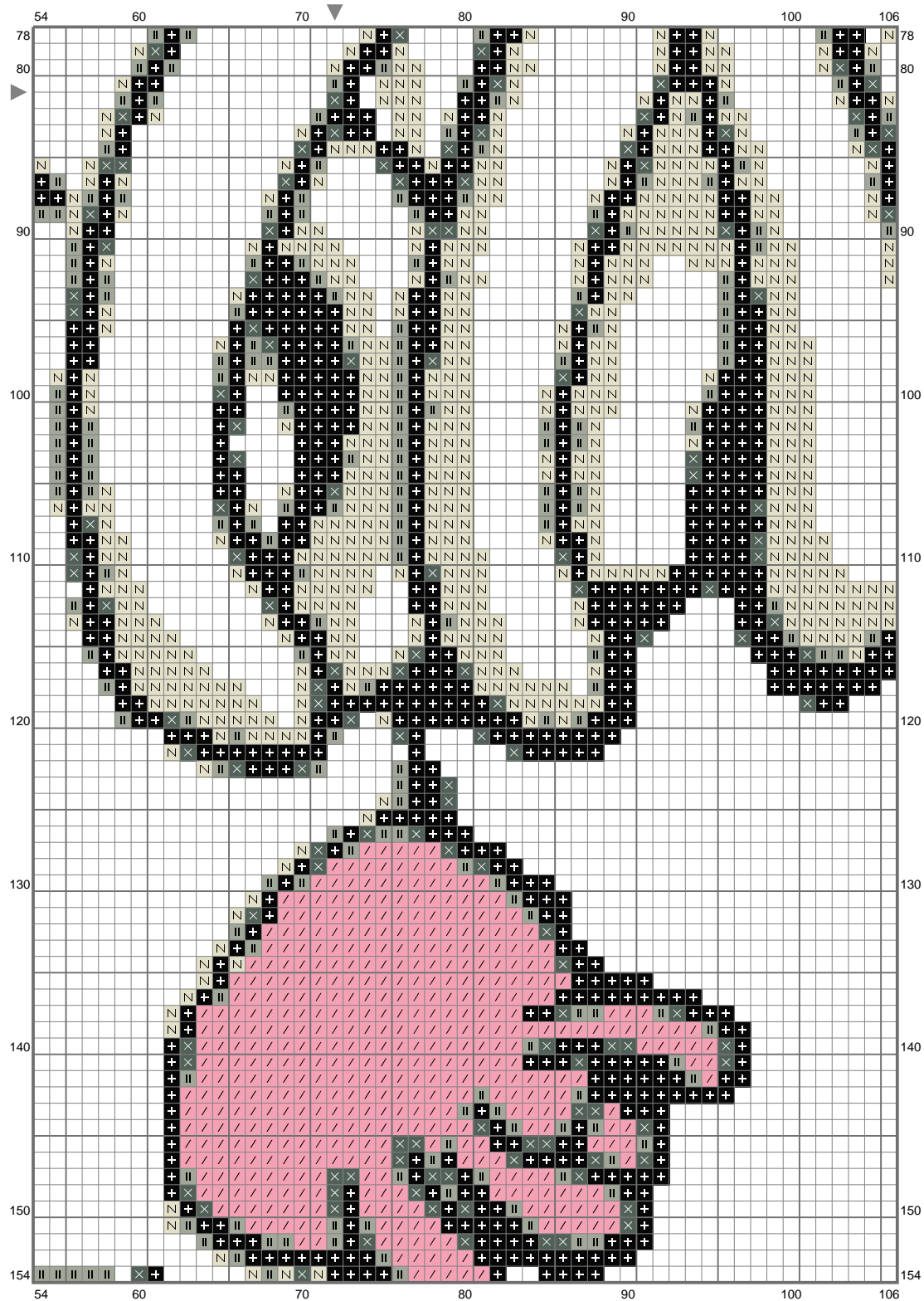
(This chart is printed using KG-Chart LE for Cross Stitch.)

Untitled

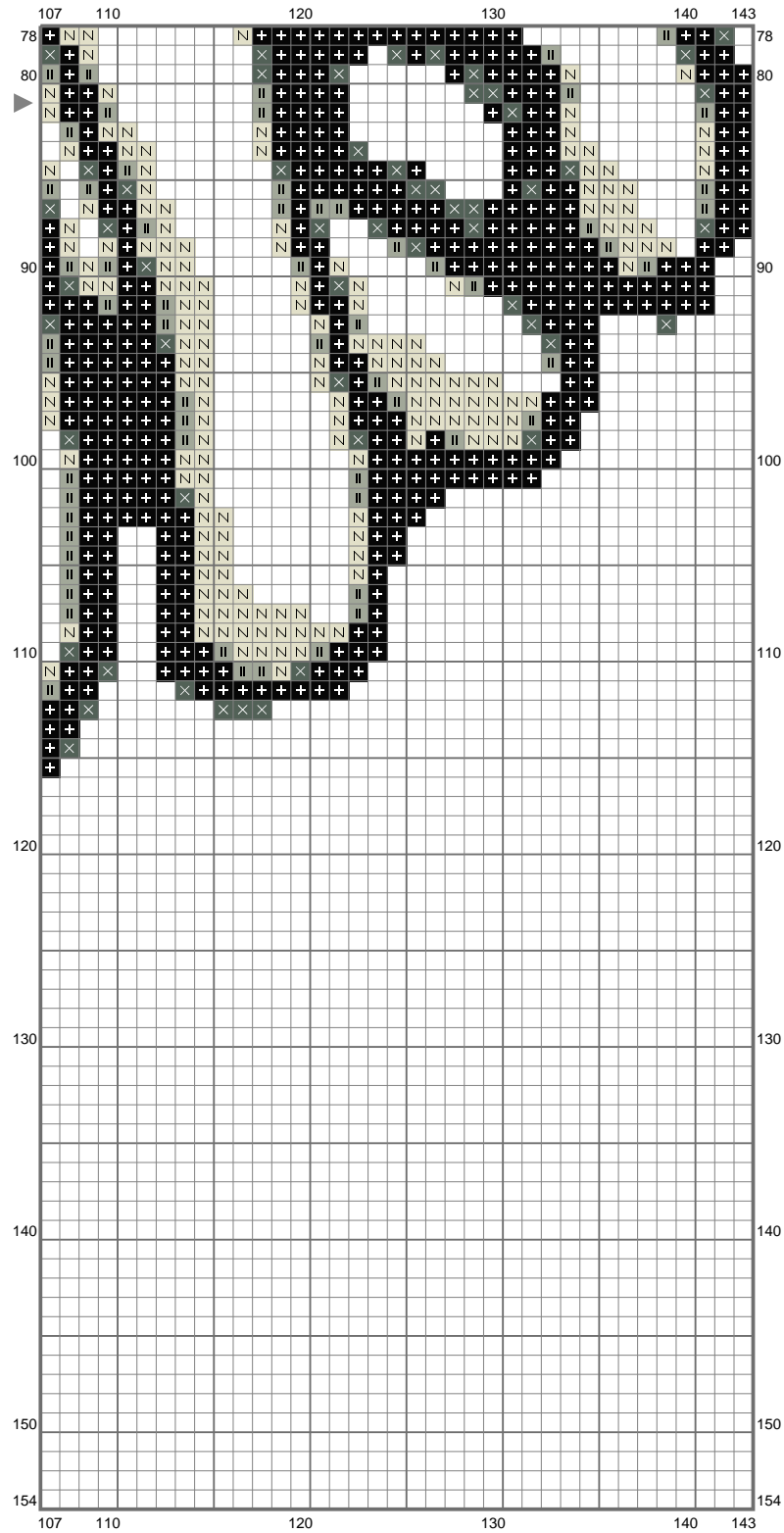


(This chart is printed using KG-Chart LE for Cross Stitch.)

Untitled

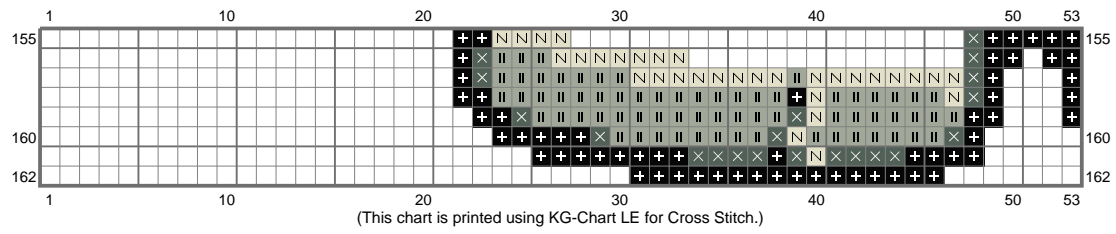


Untitled

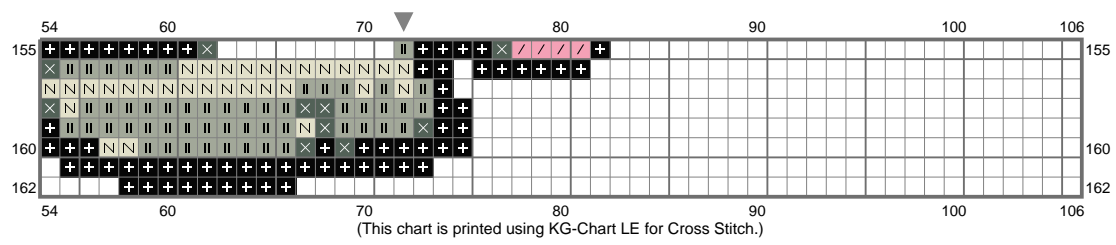


(This chart is printed using KG-Chart LE for Cross Stitch.)

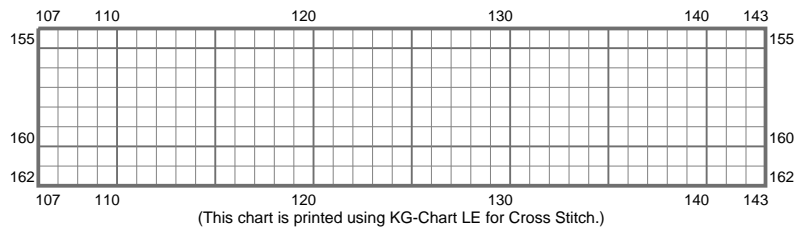
Untitled



Untitled









Untitled



Stitch Count: 143w x 162h
Finished Size: 51.88 cm x 58.78 cm (14 ct./inch)
Cloth: Aida
Cloth's Color: White
of colors: 6 Colors

Color Table (DMC)

Cross Stitch

	310	(2849 ct)
	520	(408 ct)
	3022	(625 ct)
	3733	(461 ct)
	644	(1439 ct)
	3347	(141 ct)