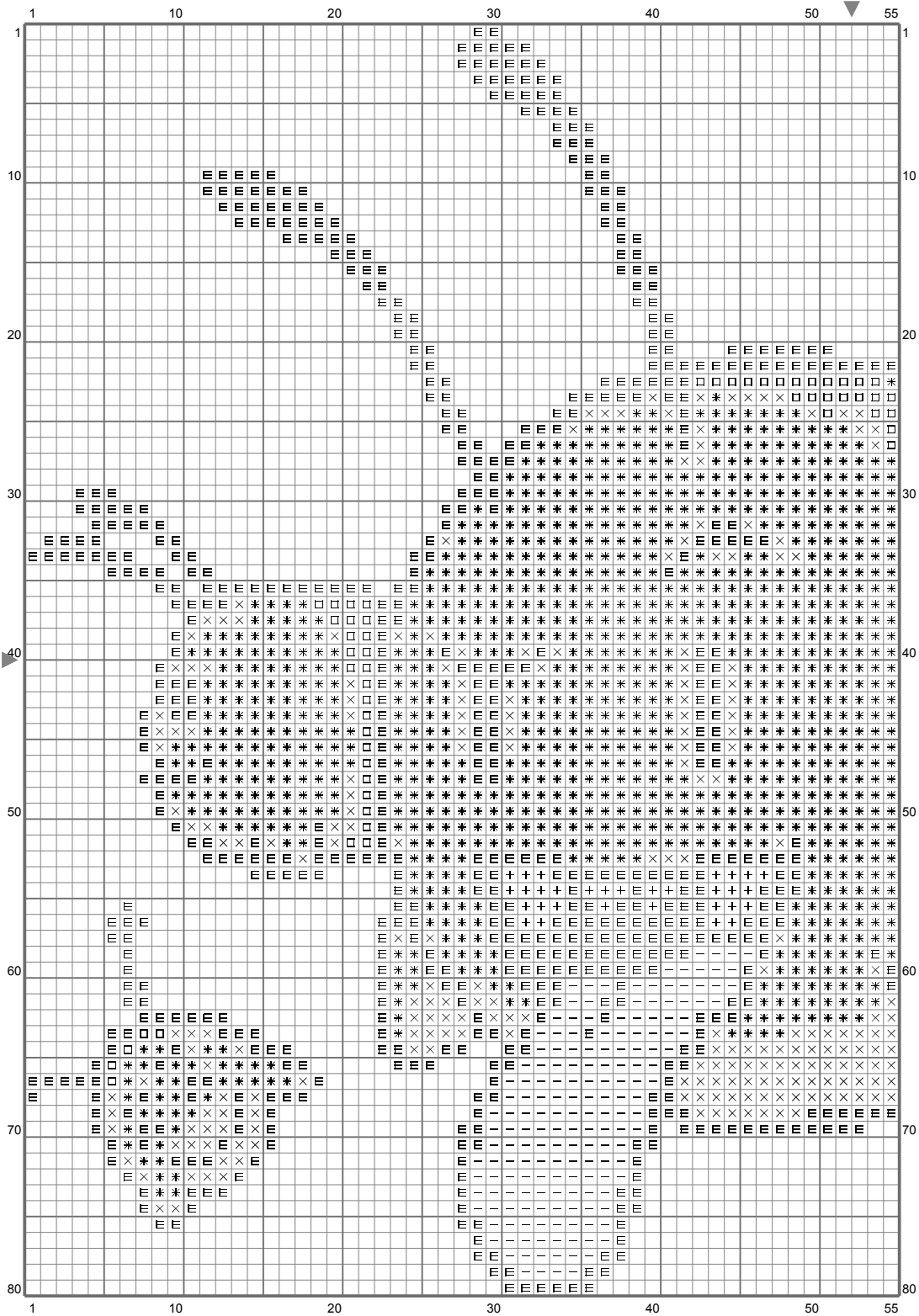
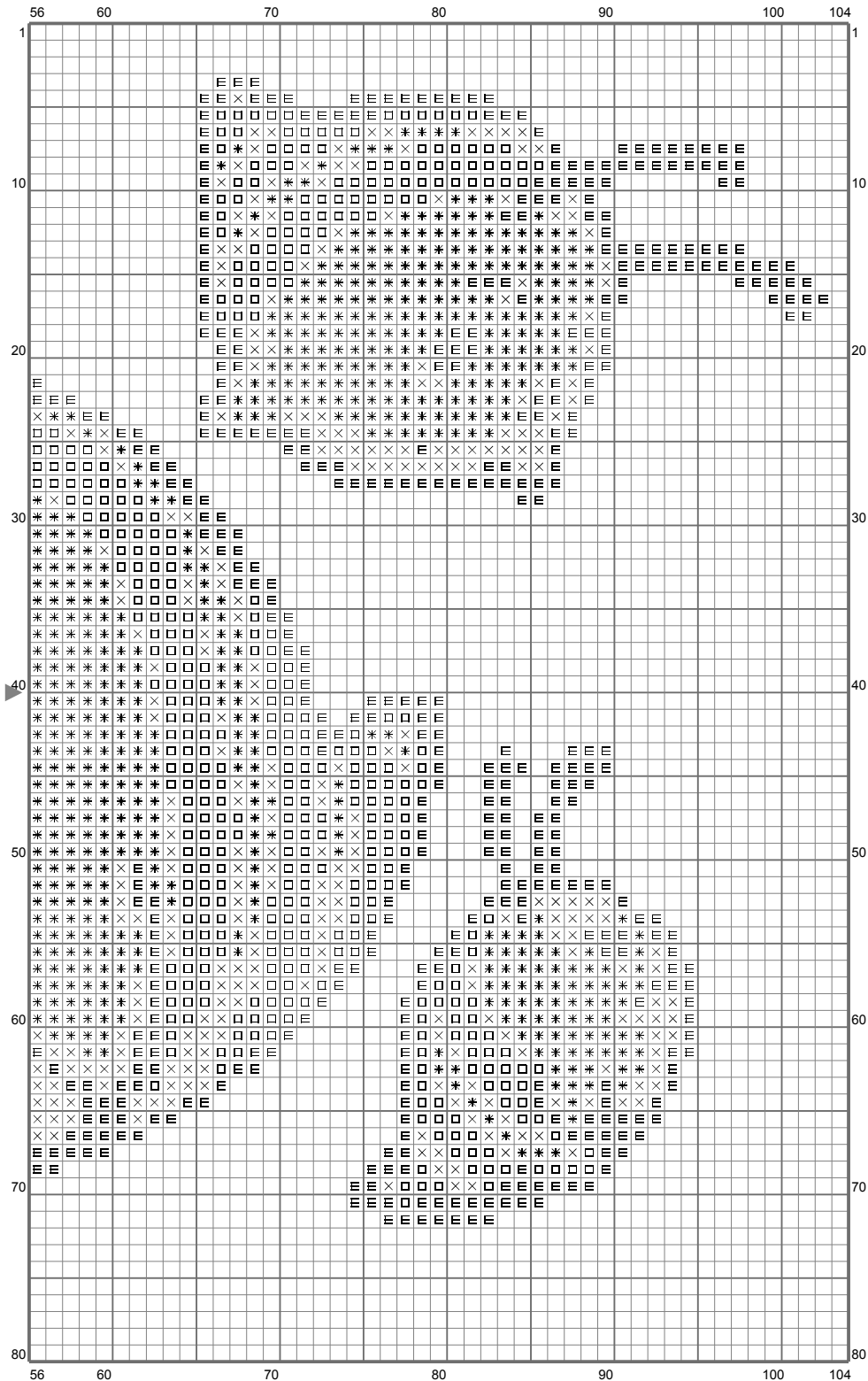


# Untitled



(This chart is printed using KG-Chart LE for Cross Stitch.)

# Untitled



(This chart is printed using KG-Chart LE for Cross Stitch.)

## Untitled

Stitch Count: 104w x 80h

Finished Size: 16.51 cm x 12.7 cm (16 ct./inch)







Cloth: Aida

Cloth's Color: White

# of colors: 6 Colors

### Color Table (DMC)

#### **Cross Stitch**

	300	(457 ct)
	310	(1094 ct)
	603	(174 ct)
	725	(1580 ct)
	762	(31 ct)
	3820	(509 ct)