

Untitled



# Untitled

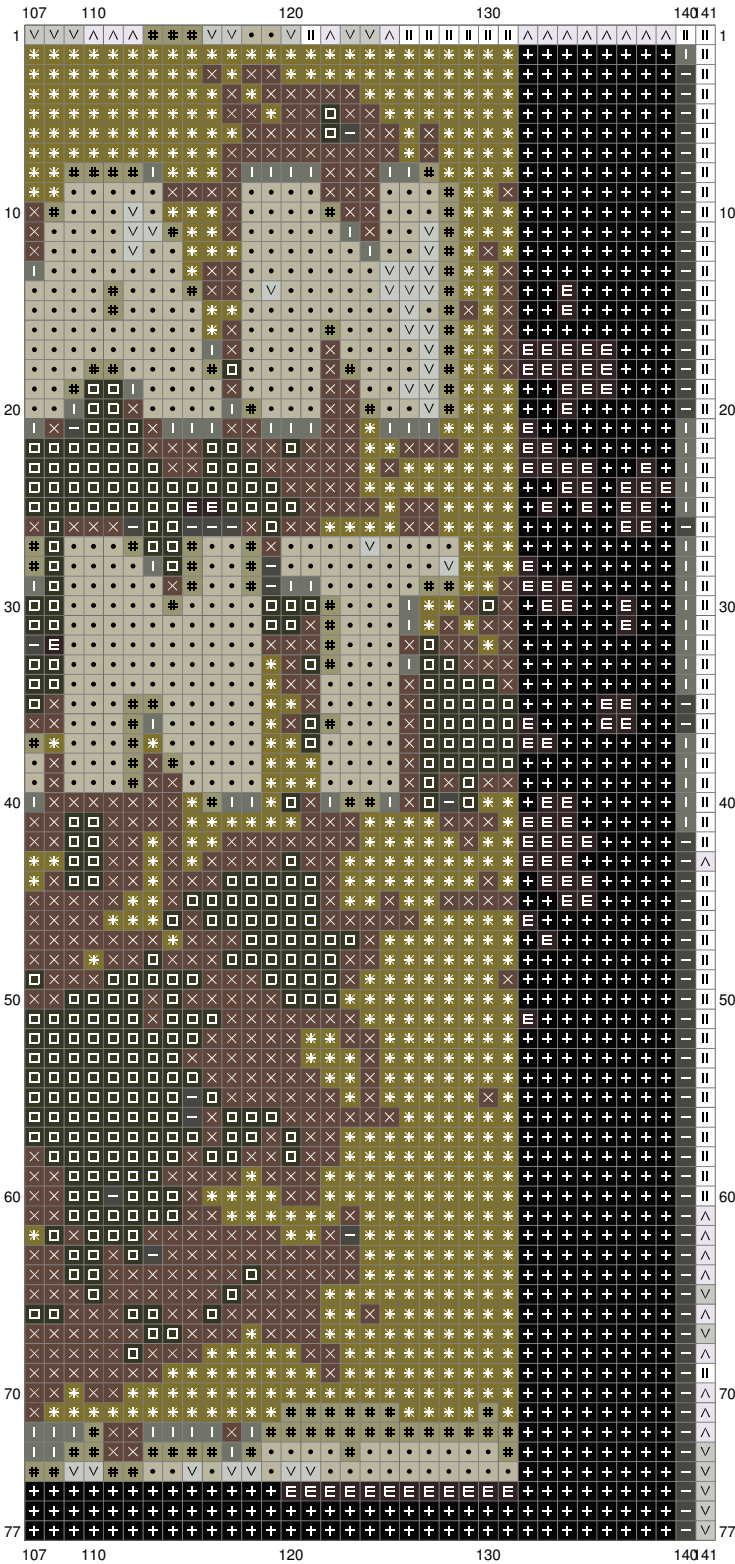


(This chart is printed using KG-Chart LE for Cross Stitch.)

# Untitled

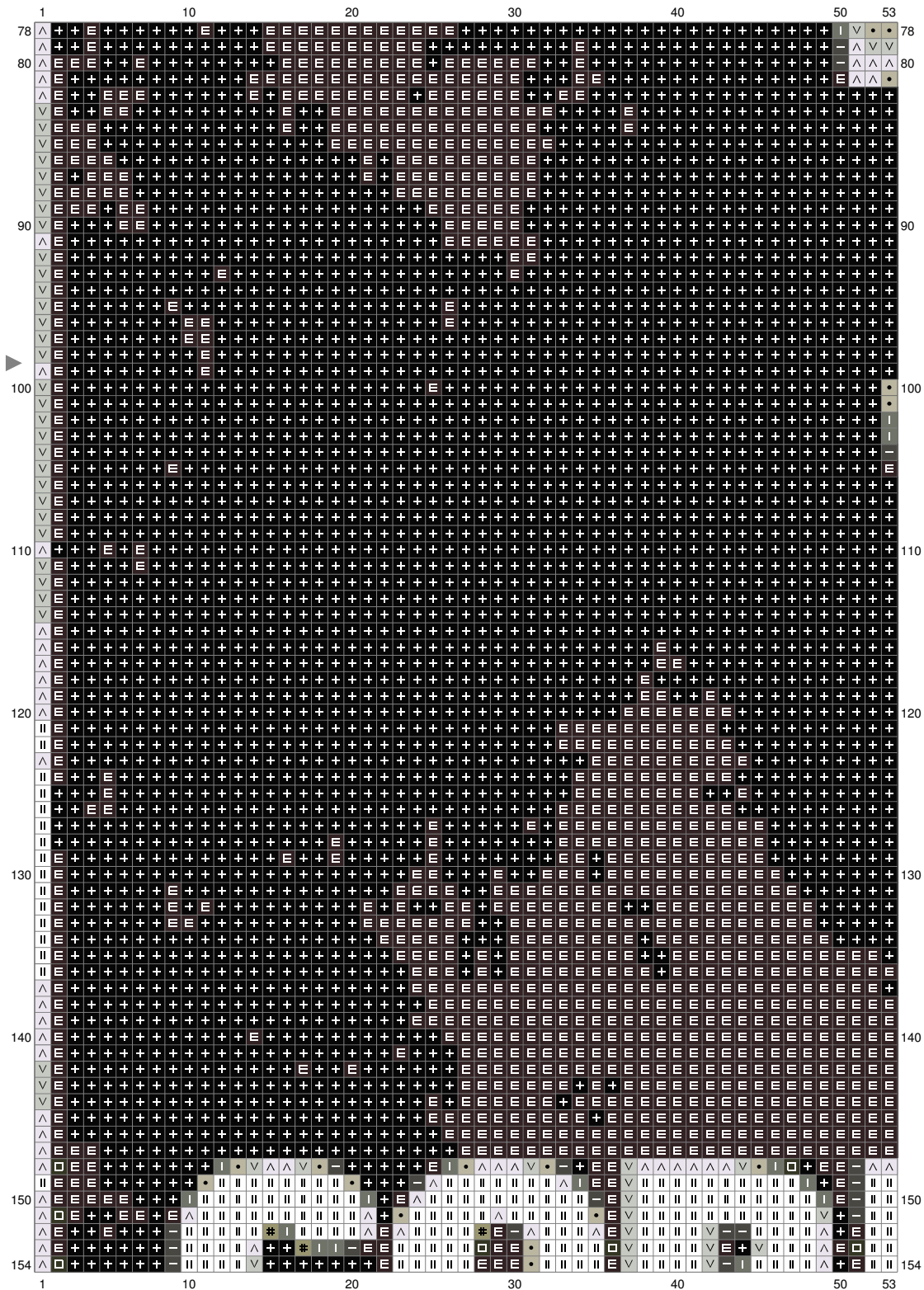


# Untitled

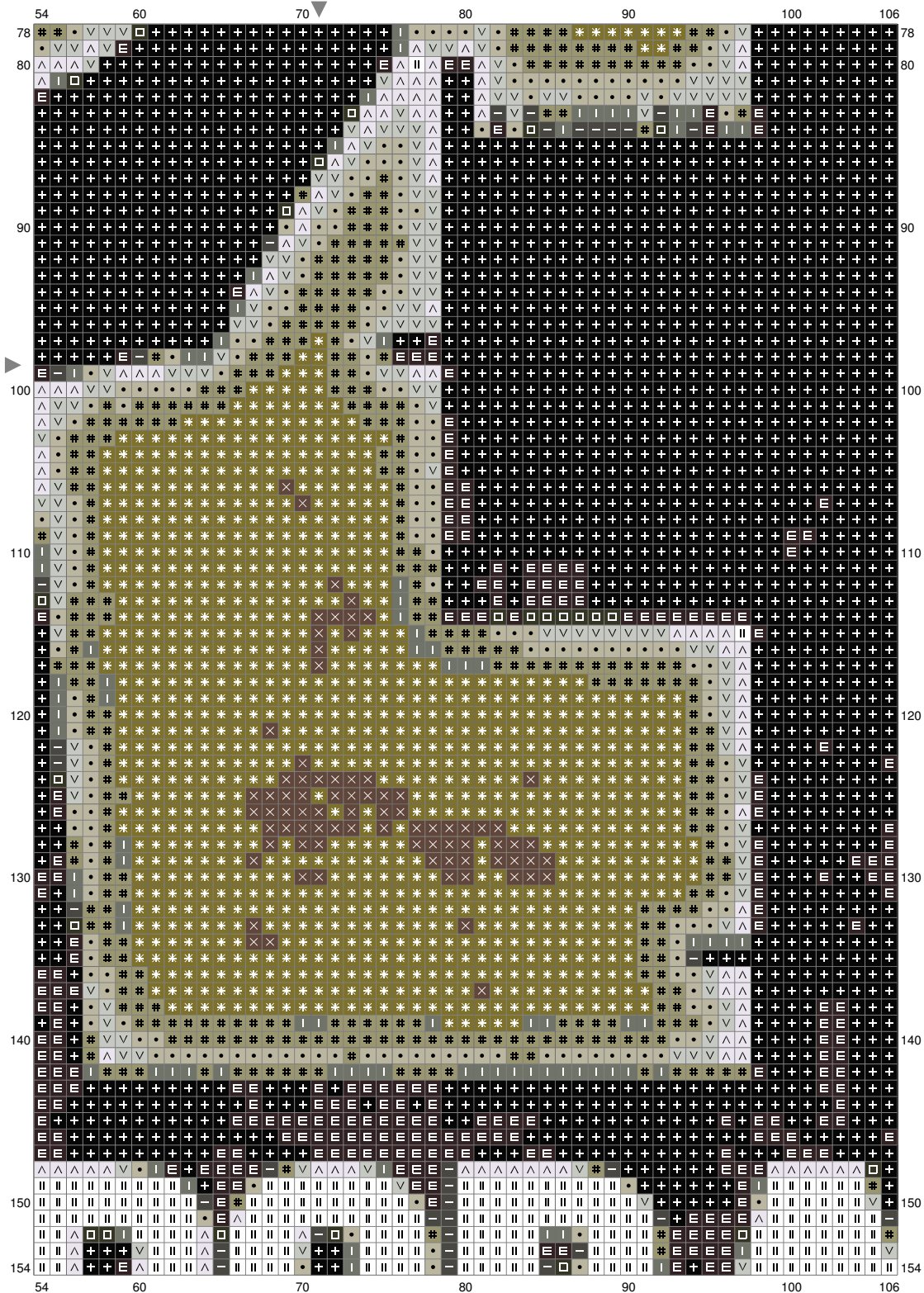


(This chart is printed using KG-Chart LE for Cross Stitch.)

# Untitled

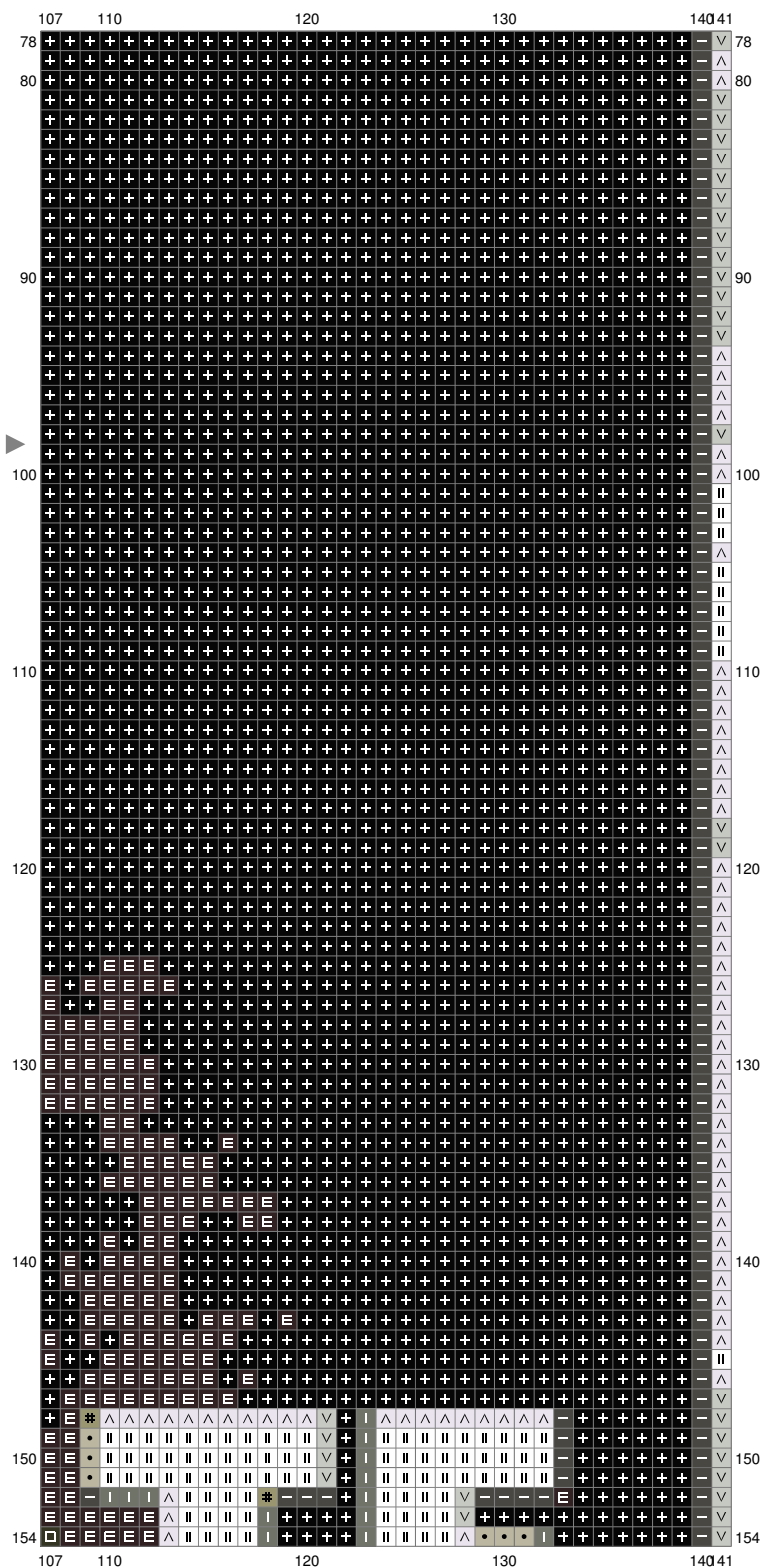


# Untitled



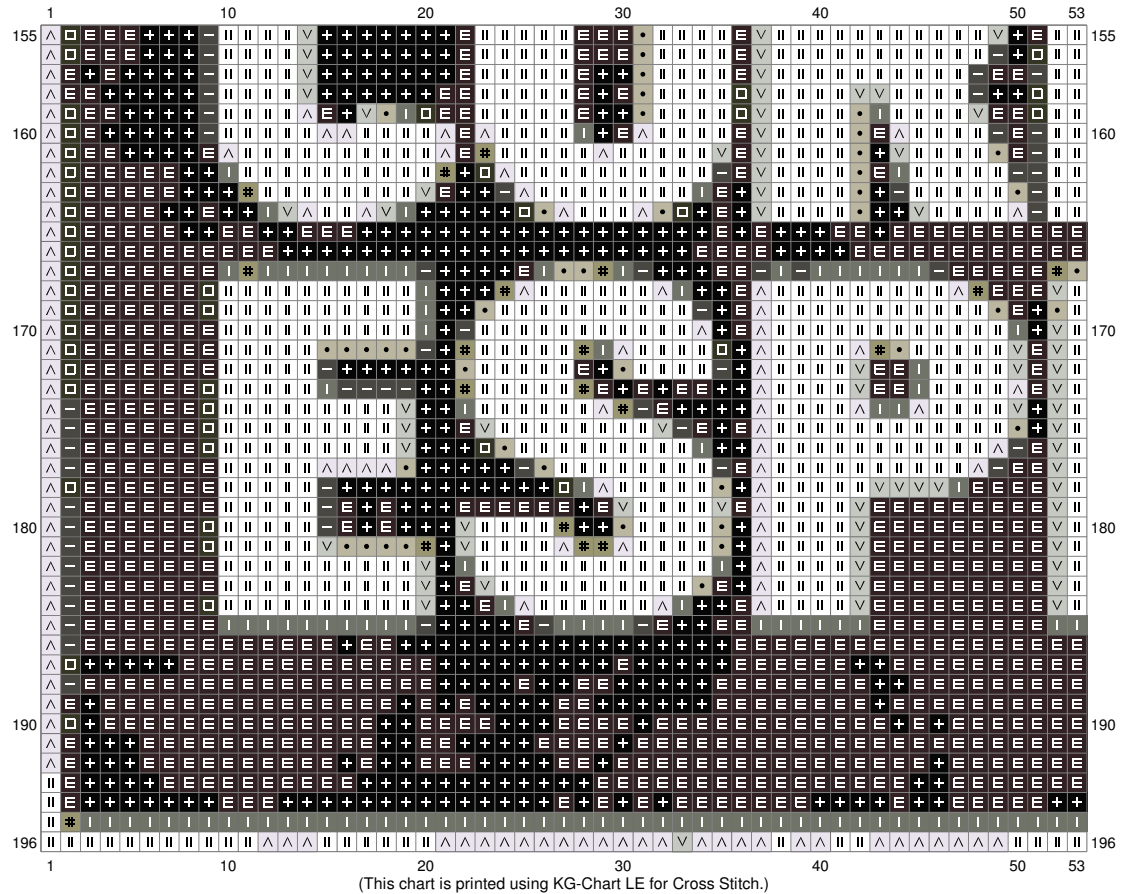
(This chart is printed using KG-Chart LE for Cross Stitch.)

# Untitled



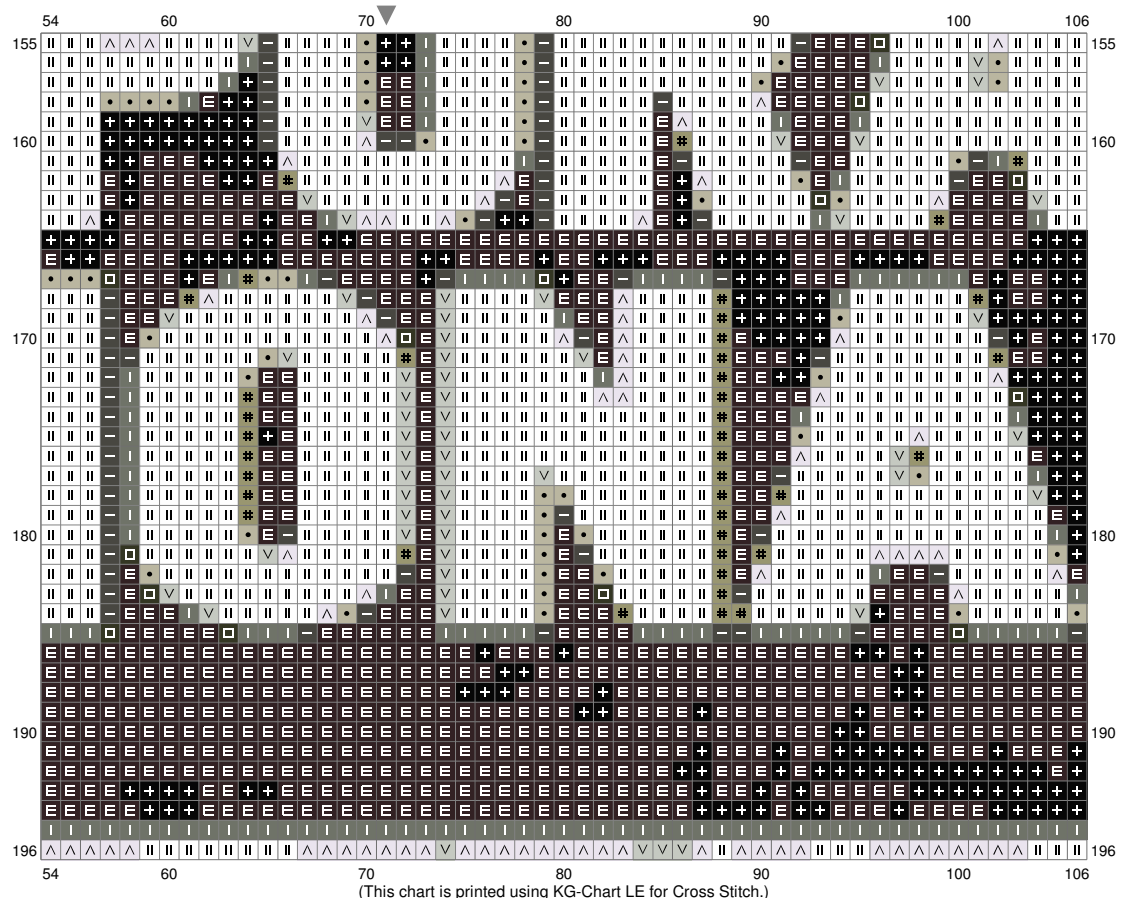
(This chart is printed using KG-Chart LE for Cross Stitch.)

# Untitled





# Untitled



## Untitled



## Untitled

Stitch Count: 141w x 196h

Finished Size: 51.16 cm x 71.12 cm (14 ct./inch)













Cloth: Linen

Cloth's Color: White

# of colors: 12 Colors

### Color Table (DMC)

#### **Cross Stitch**

	310	(10124 ct)
	939	(3362 ct)
	934	(1673 ct)
	3021	(591 ct)
	3031	(2090 ct)
	730	(2229 ct)
	645	(919 ct)
	3052	(1021 ct)
	642	(1889 ct)
	3023	(585 ct)
	762	(622 ct)
	B5200	(2531 ct)