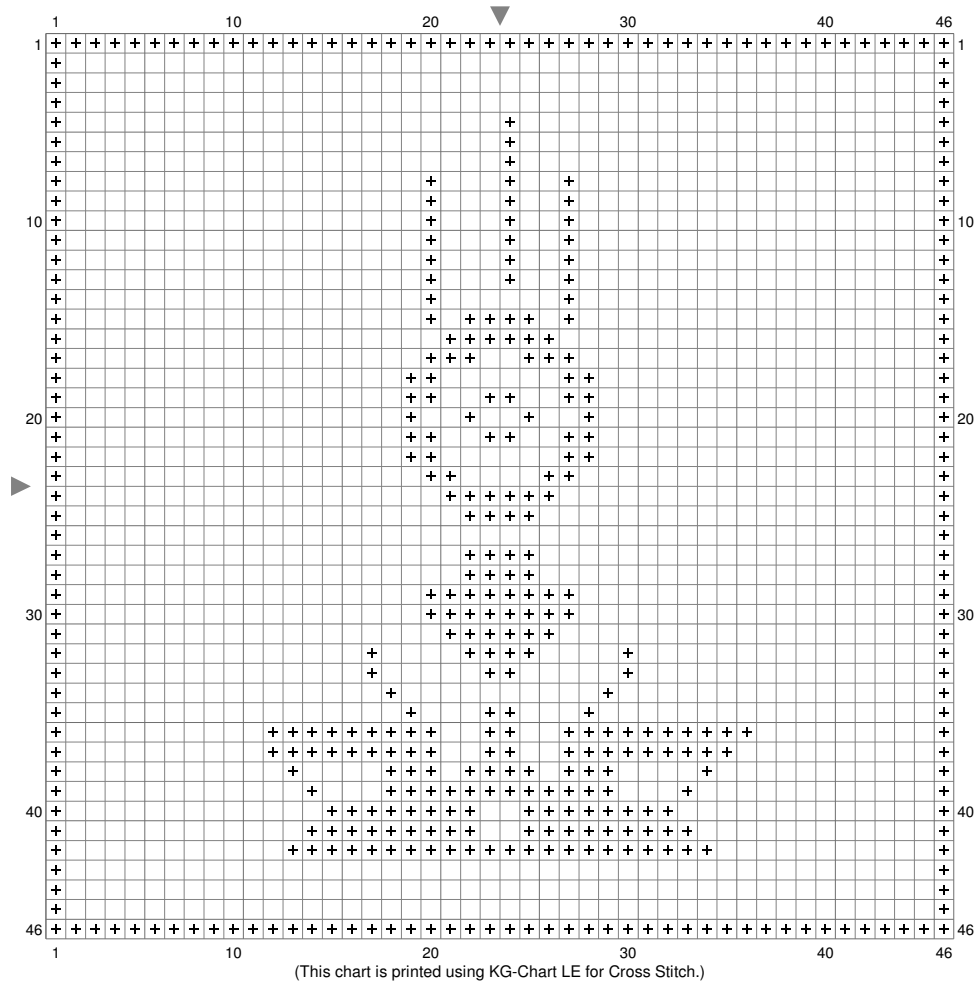


Smash



Stitch Count: 46w x 46h

Finished Size: 7.30 cm x 7.30 cm (16 ct./inch)

Cloth: Aida

Cloth's Color: White

of colors: 1 Colors

Color Table (DMC)

Cross Stitch

+ 310 (428 ct)

Comment

Patterned by Bikyclist -- <http://bikyclist.blogspot.com>