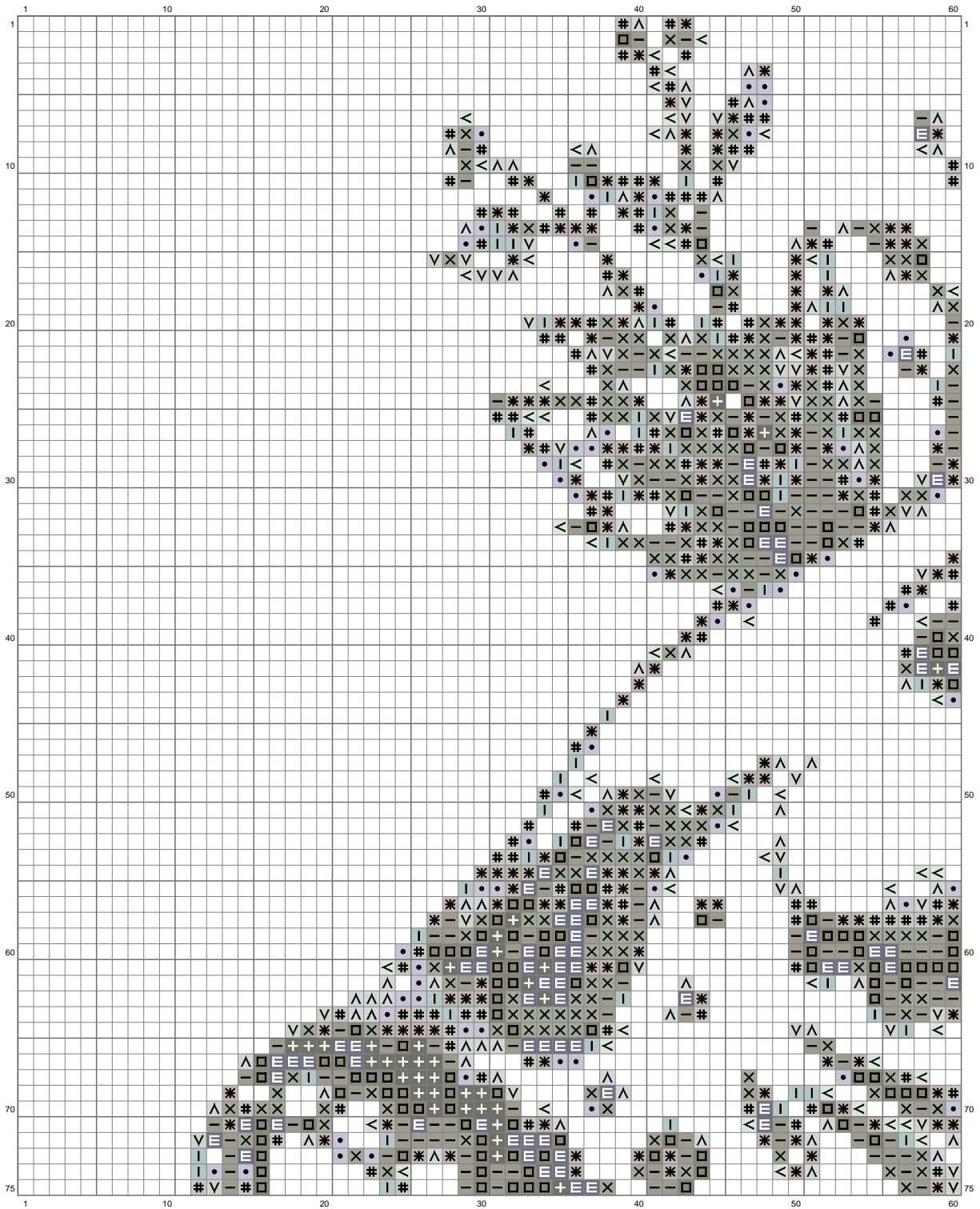


# Untitled





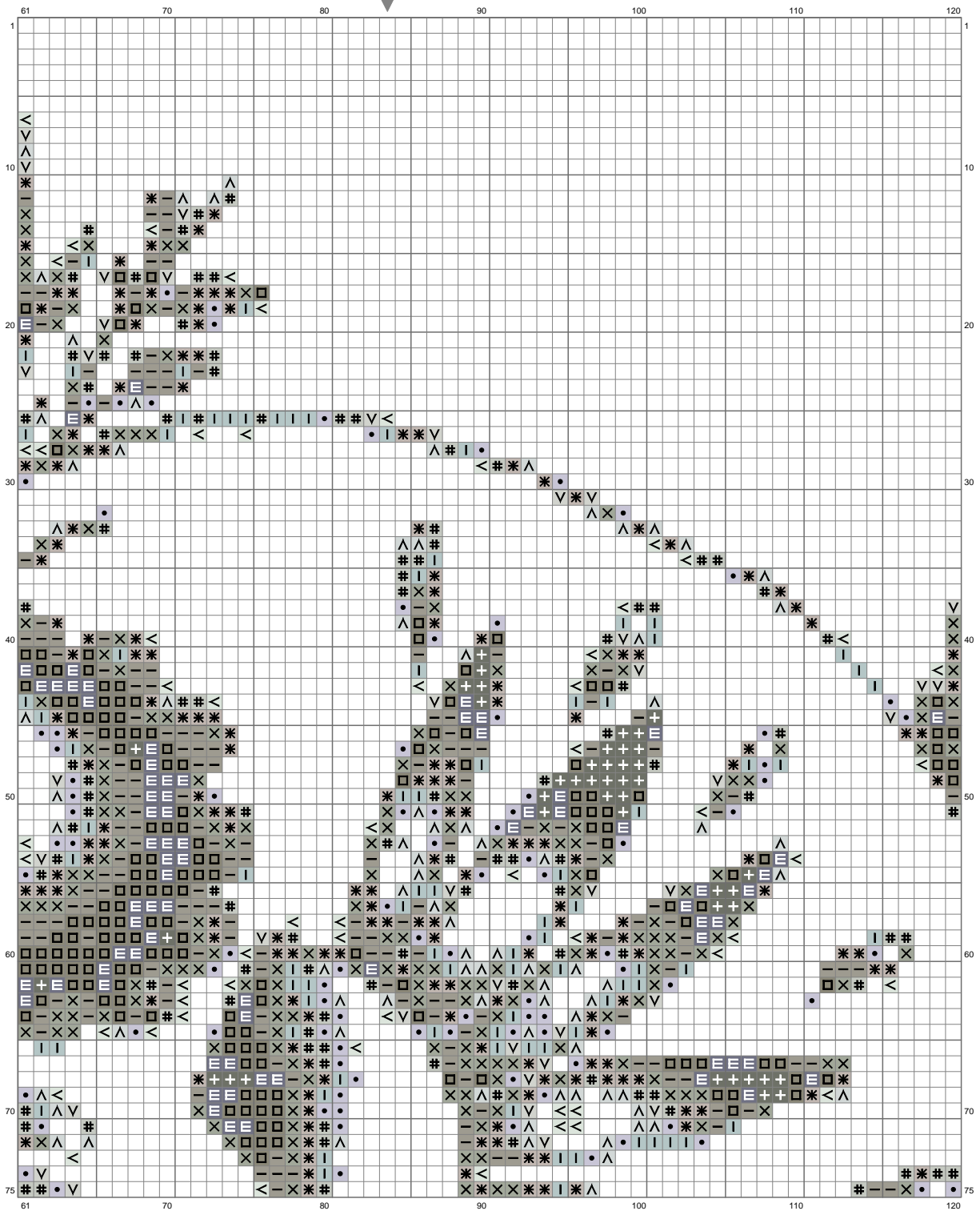
# Untitled



(This chart is printed using KG-Chart LE for Cross Stitch.)



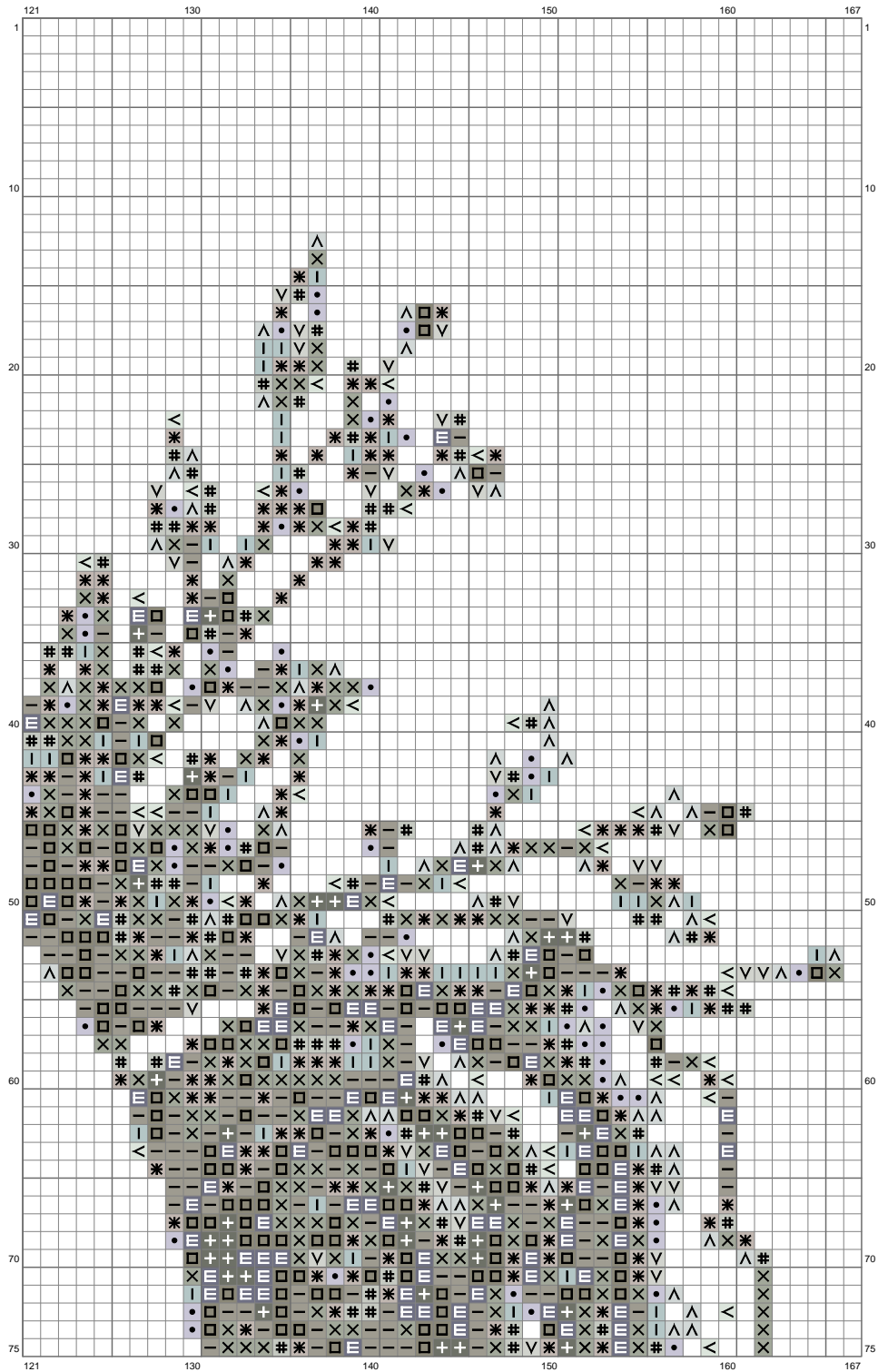
# Untitled



(This chart is printed using KG-Chart LE for Cross Stitch.)



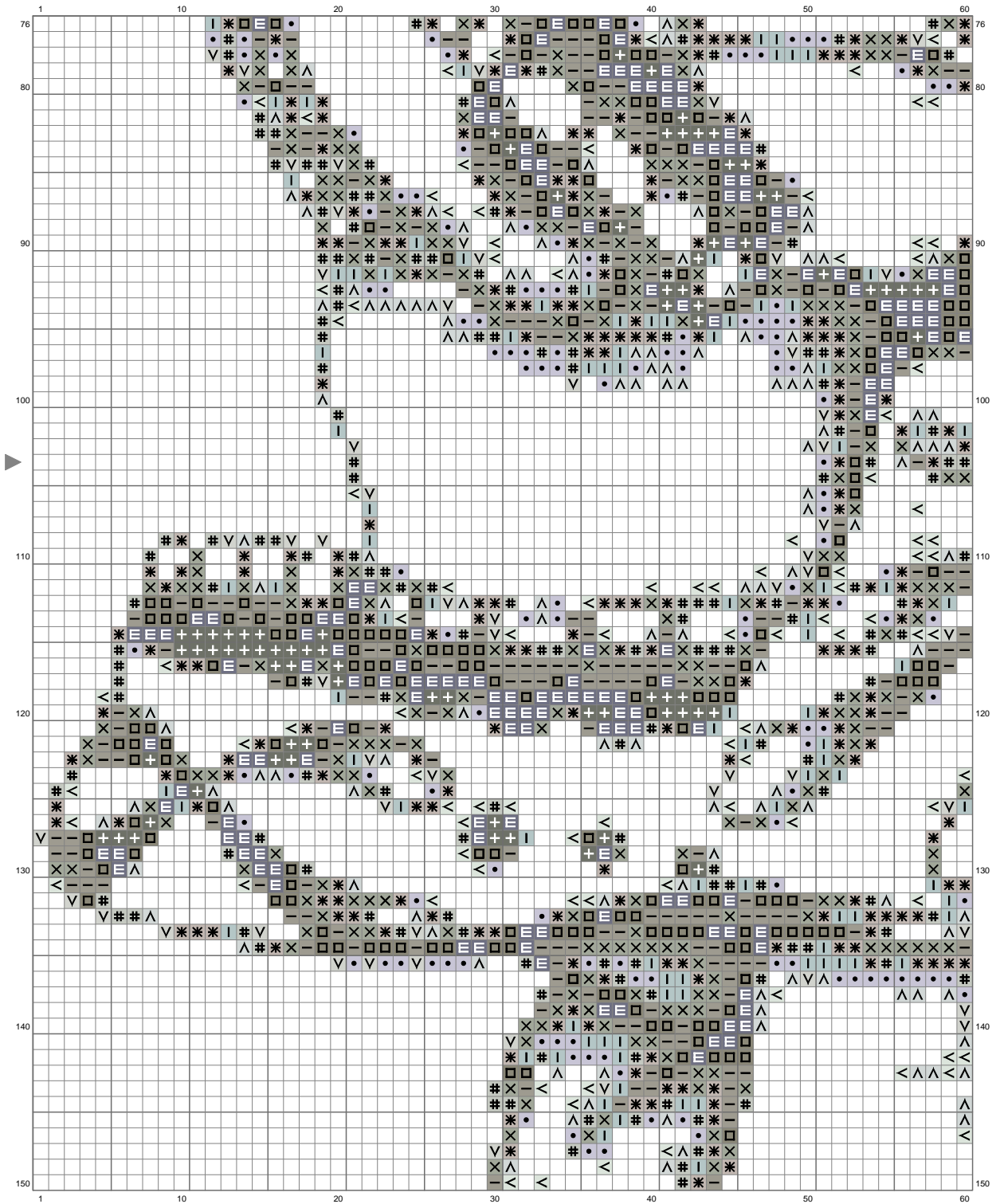
# Untitled



(This chart is printed using KG-Chart LE for Cross Stitch.)

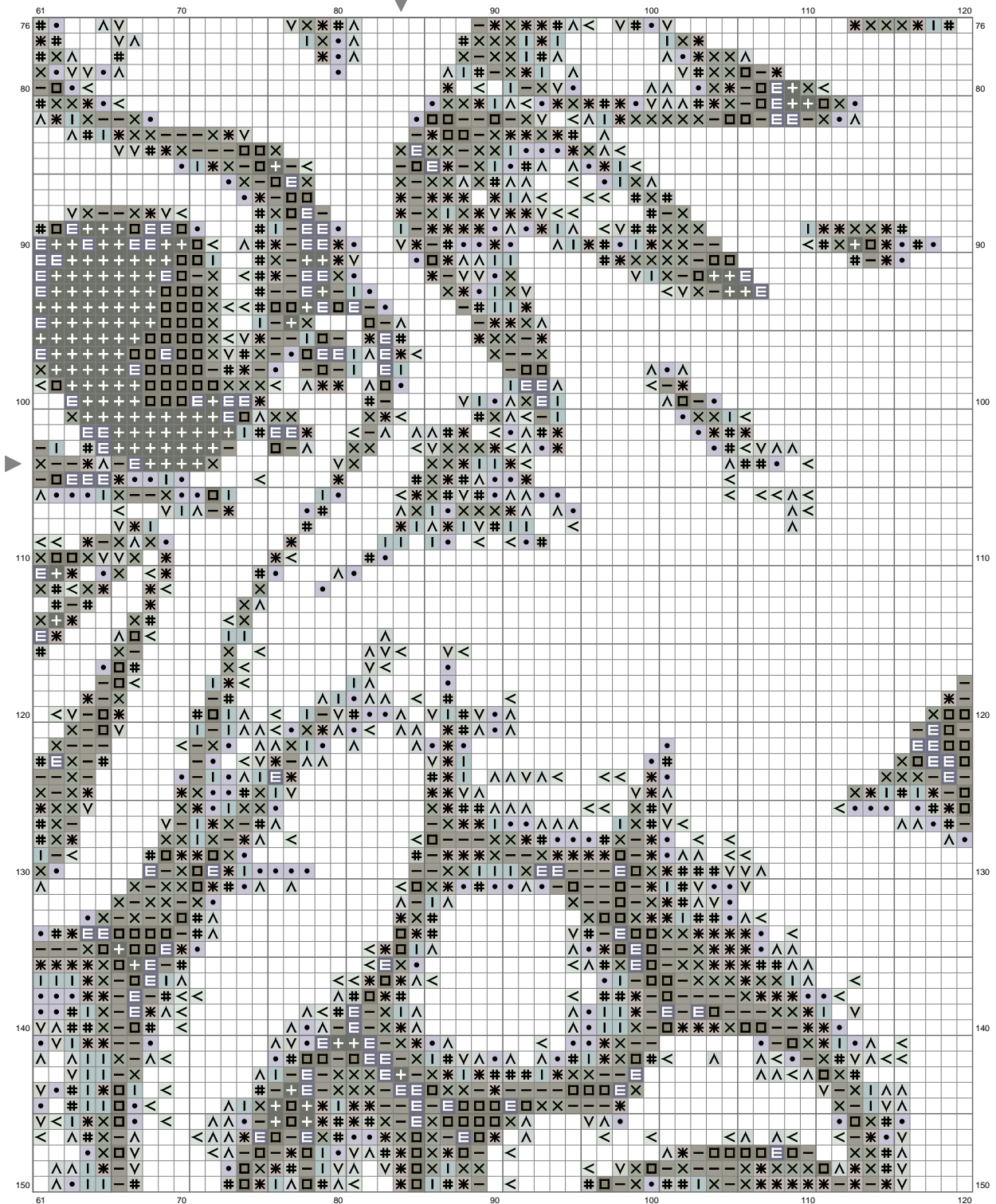


# Untitled



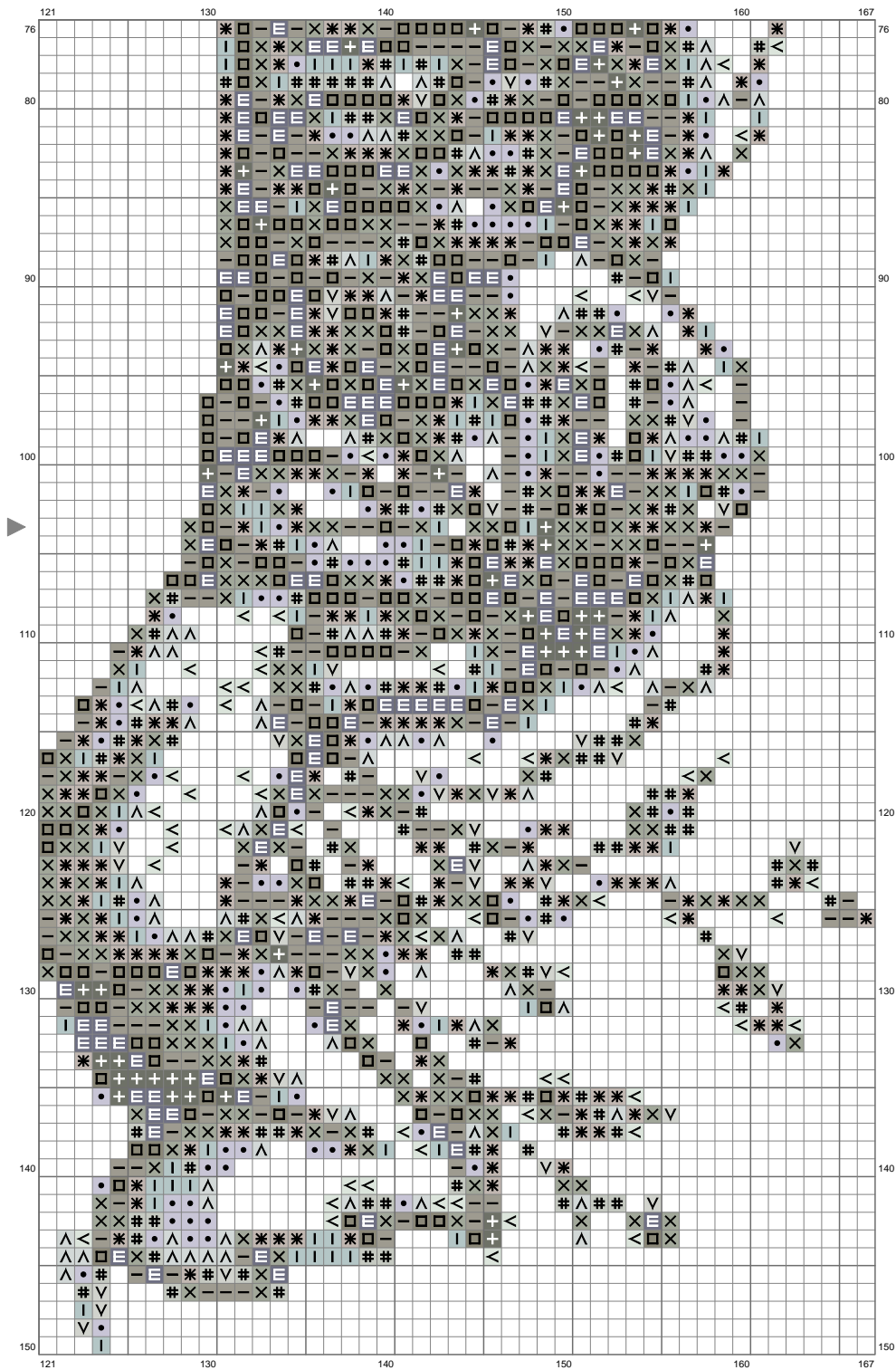


# Untitled





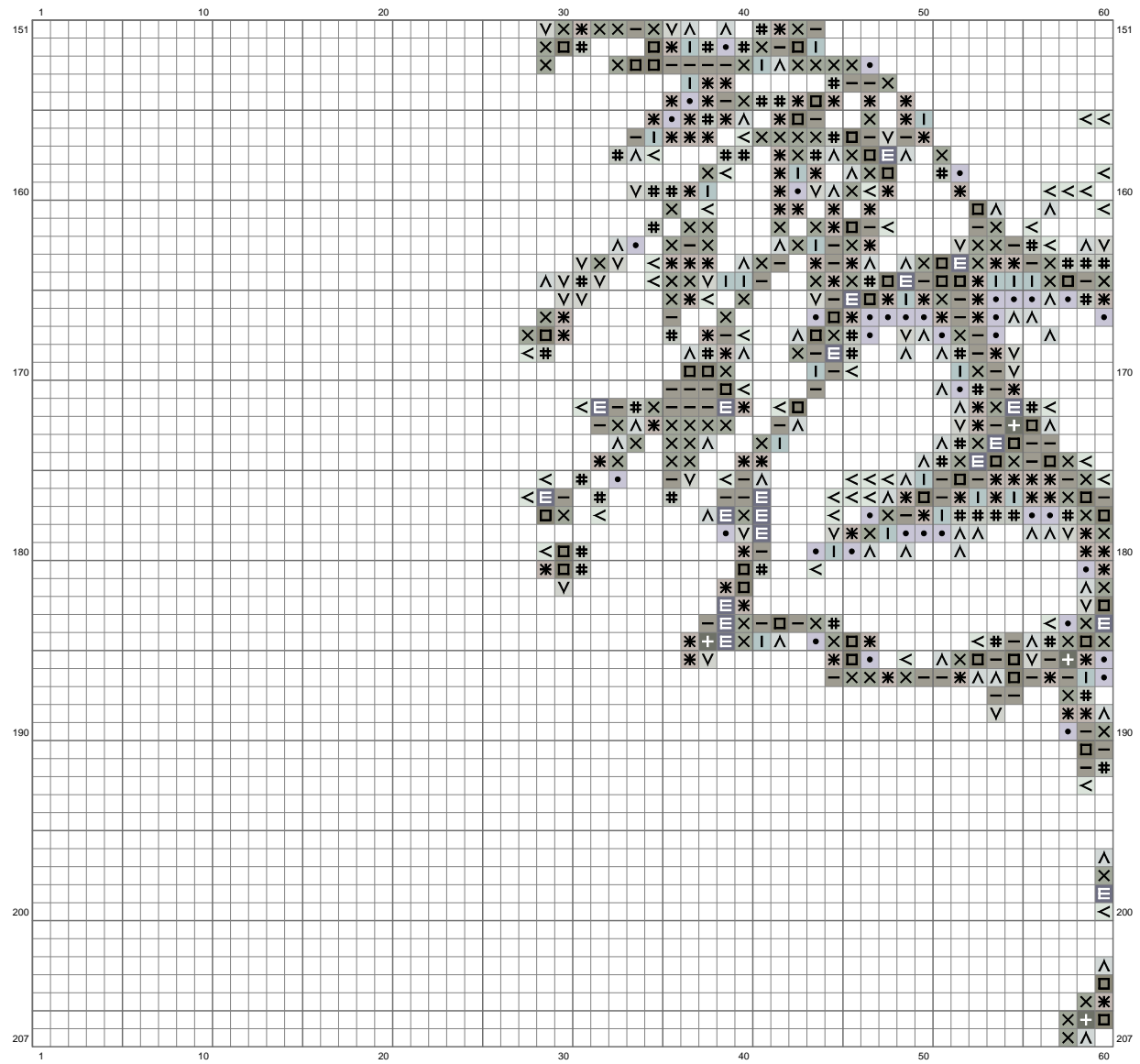
# Untitled



(This chart is printed using KG-Chart LE for Cross Stitch.)



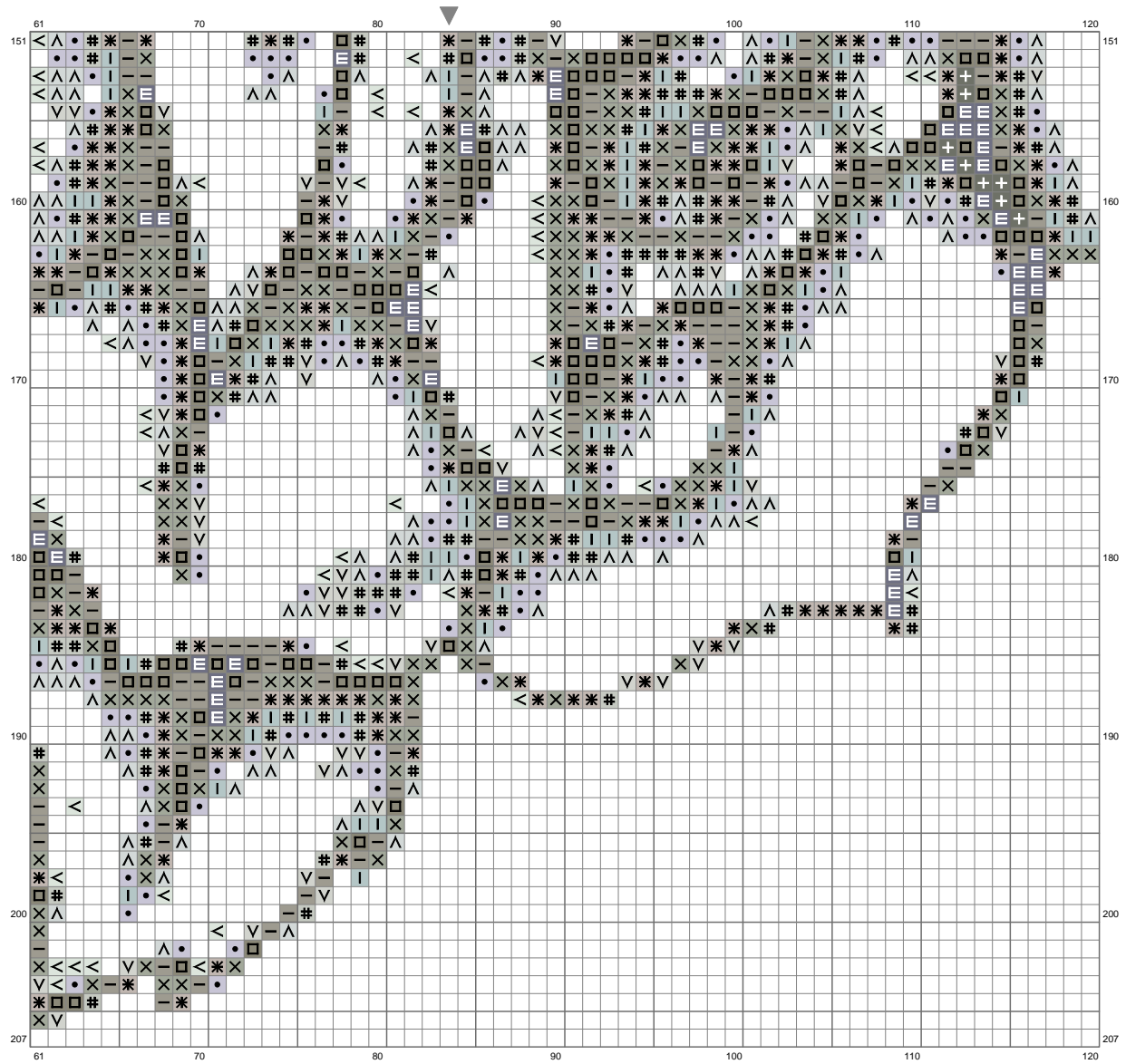
# Untitled



(This chart is printed using KG-Chart LE for Cross Stitch.)

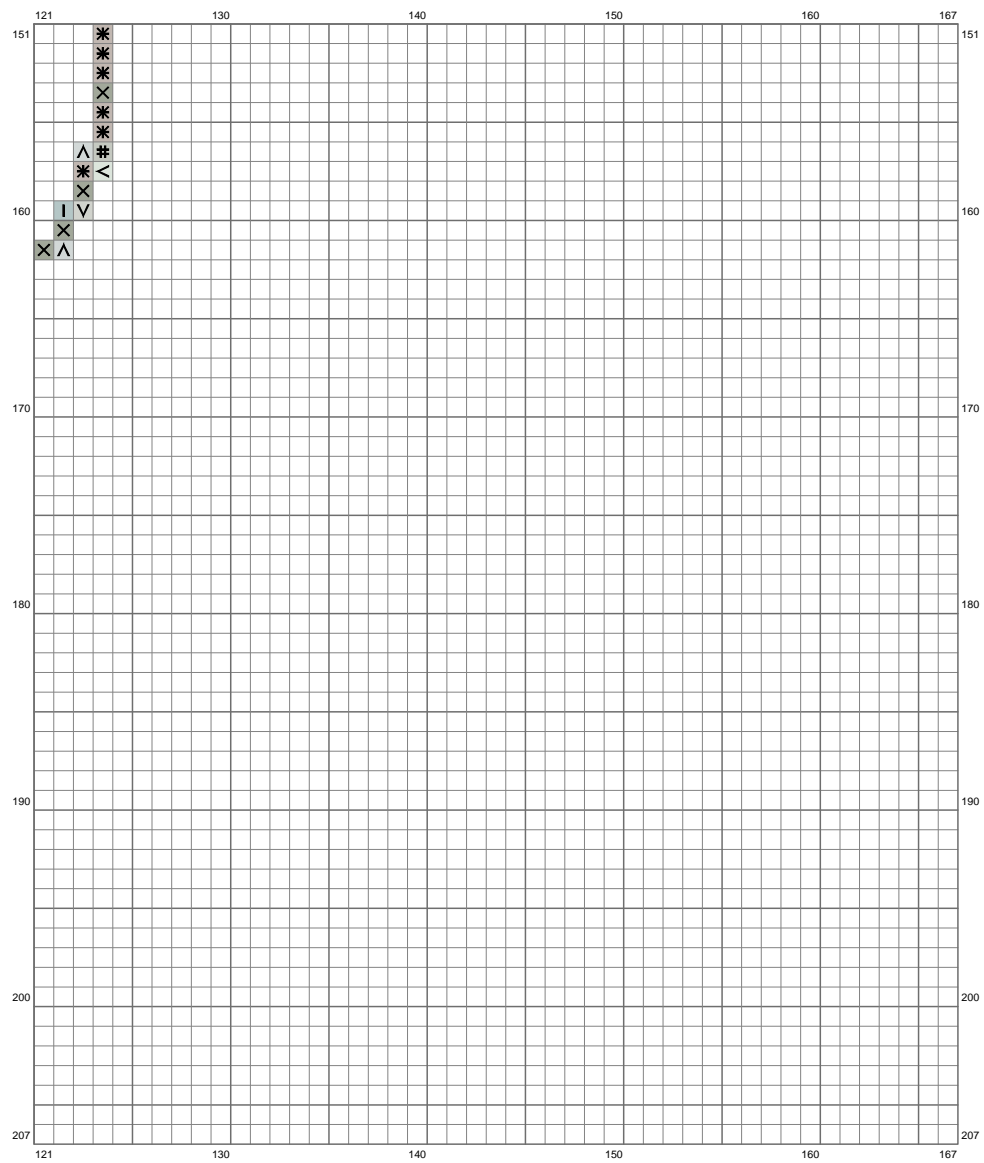


# Untitled





# Untitled



(This chart is printed using KG-Chart LE for Cross Stitch.)



# Untitled

Stitch Count: 167w x 207h

Finished Size: 60.59 cm x 75.11 cm (14 ct./inch)













Cloth: Aida

Cloth's Color: White

# of colors: 12 Colors

## Color Table (DMC)

### **Cross Stitch**

	645	(386 ct)
	317	(712 ct)
	640	(1322 ct)
	646	(1489 ct)
	3022	(1724 ct)
	647	(1561 ct)
	927	(653 ct)
	3023	(961 ct)
	318	(857 ct)
	648	(379 ct)
	928	(873 ct)
	3072	(544 ct)