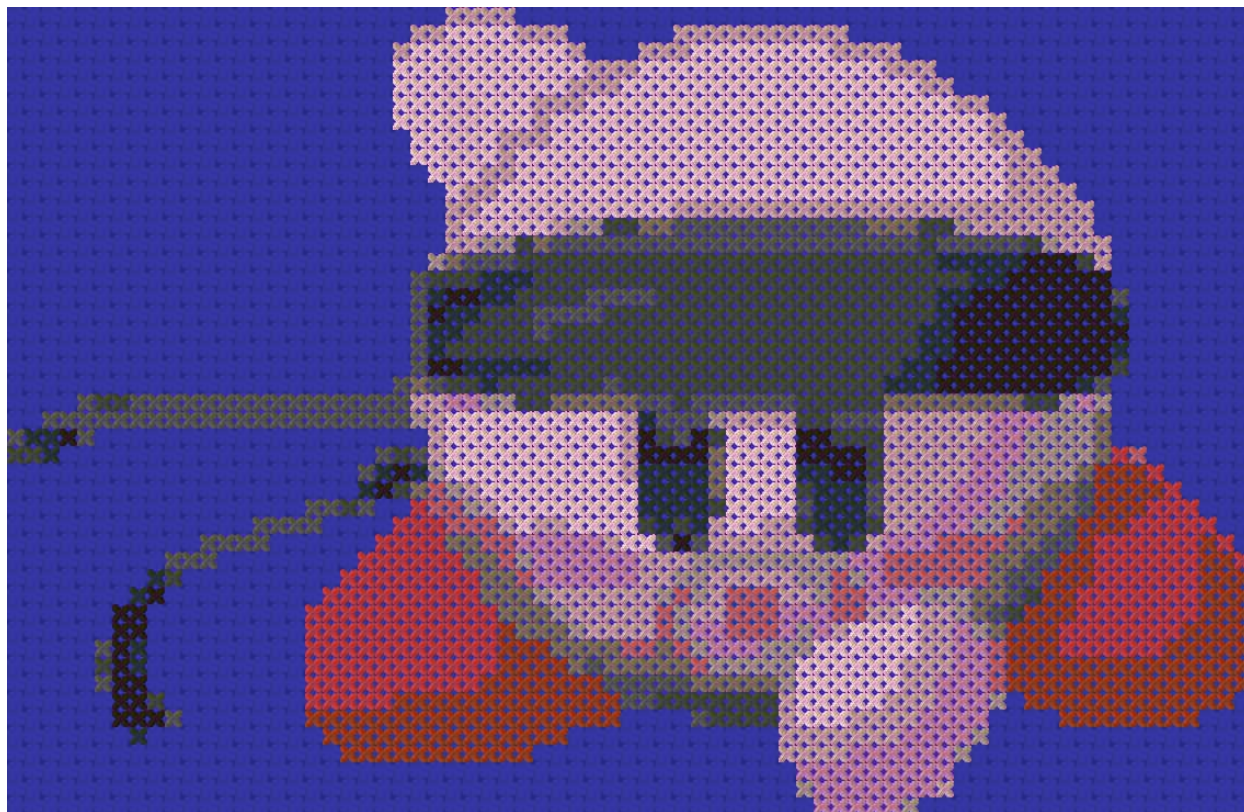
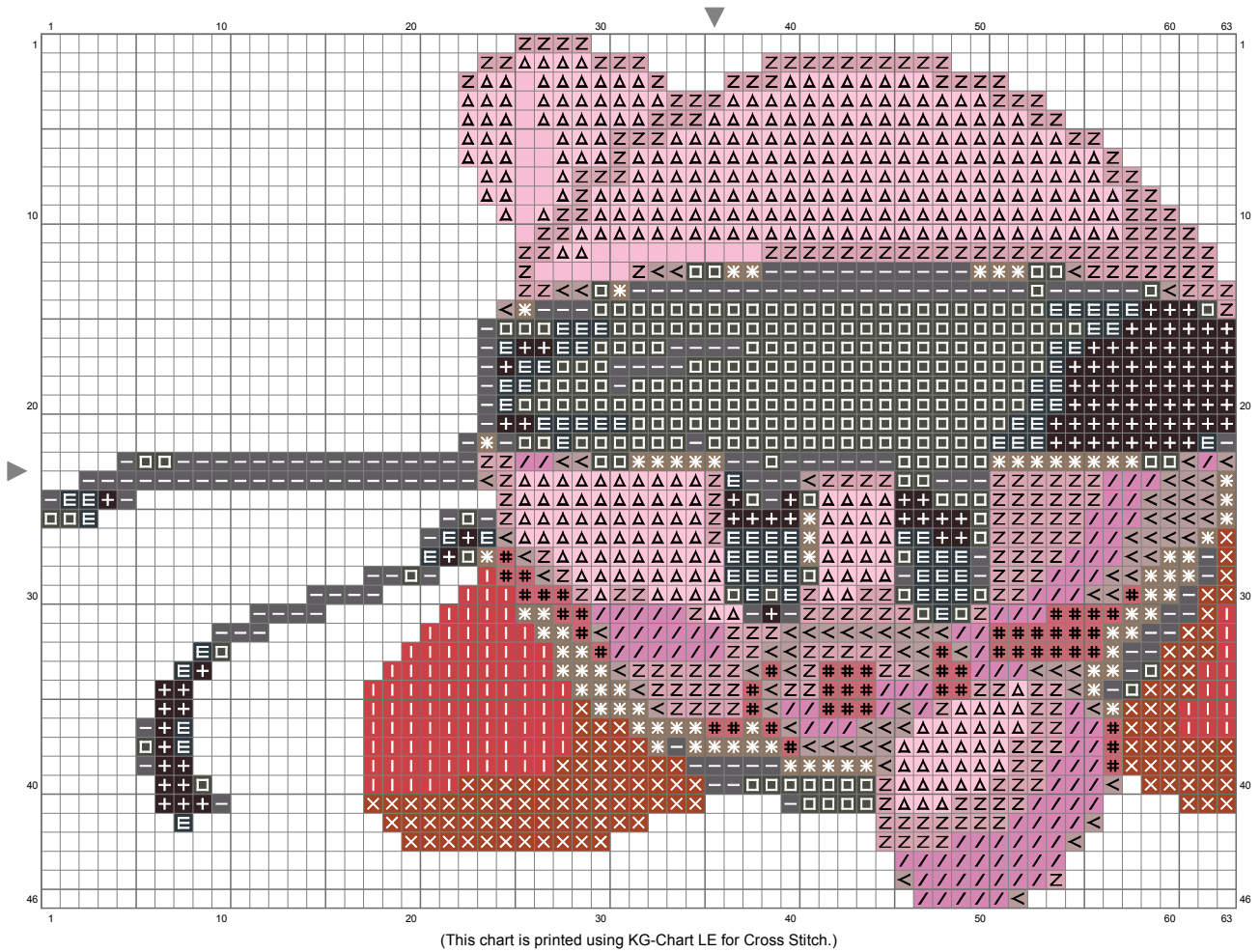


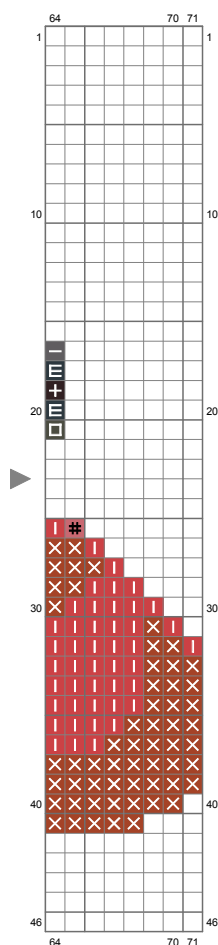
## Untitled



# Untitled



# Untitled



(This chart is printed using KG-Chart LE for Cross Stitch.)

Stitch Count: 71w x 46h

Finished Size: 25.76 cm x 16.69 cm (14 ct./inch)

Cloth: Aida

Cloth's Color: Navy Blue

# of colors: 12 Colors

## Color Table (DMC)

### Cross Stitch

	939	(100 ct)
	500	(77 ct)
	935	(248 ct)
	535	(160 ct)
	918	(170 ct)
	3790	(76 ct)
	347	(148 ct)
	3722	(52 ct)
	840	(81 ct)
	3835	(104 ct)
	778	(231 ct)
	3716	(365 ct)