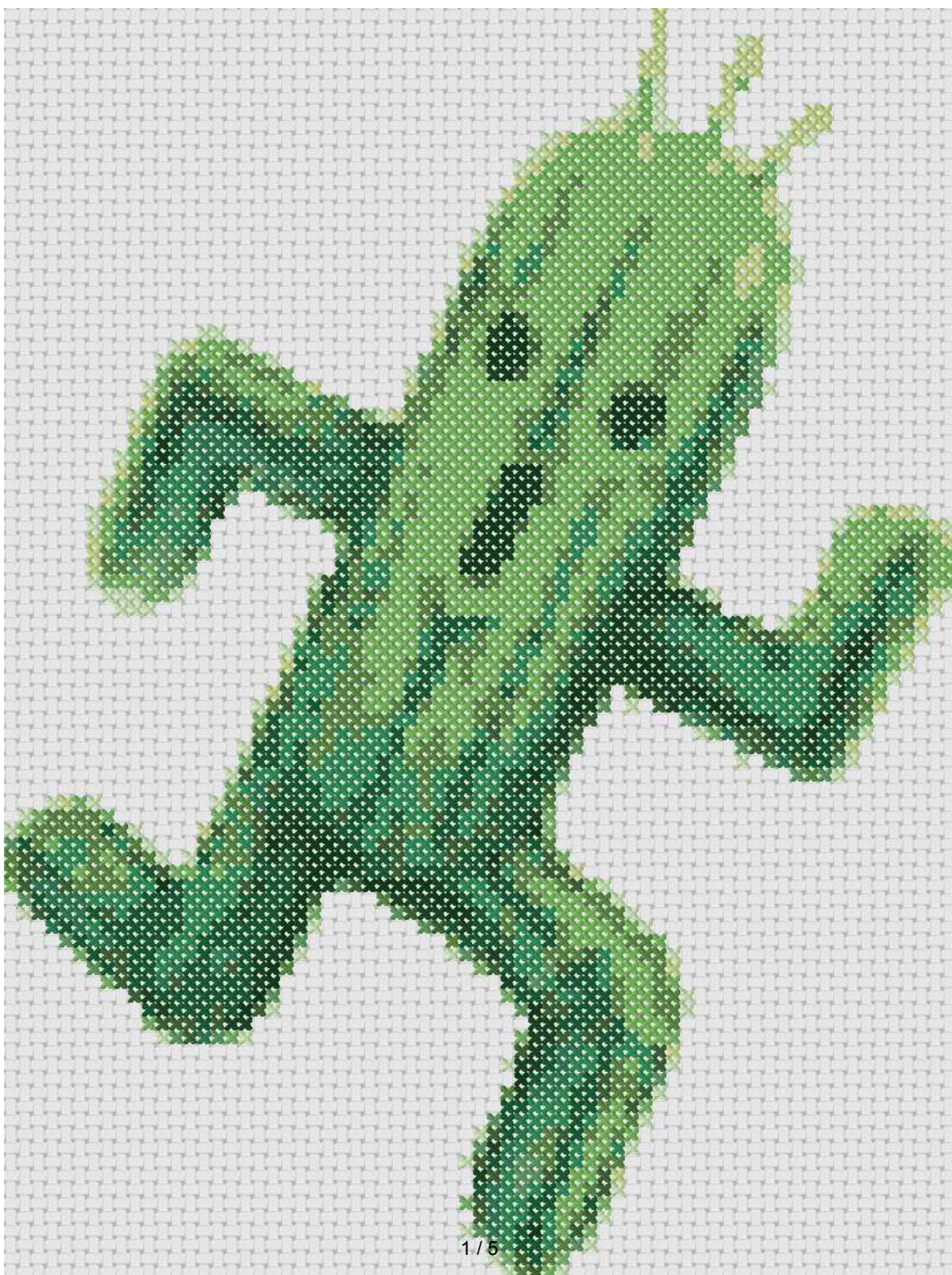
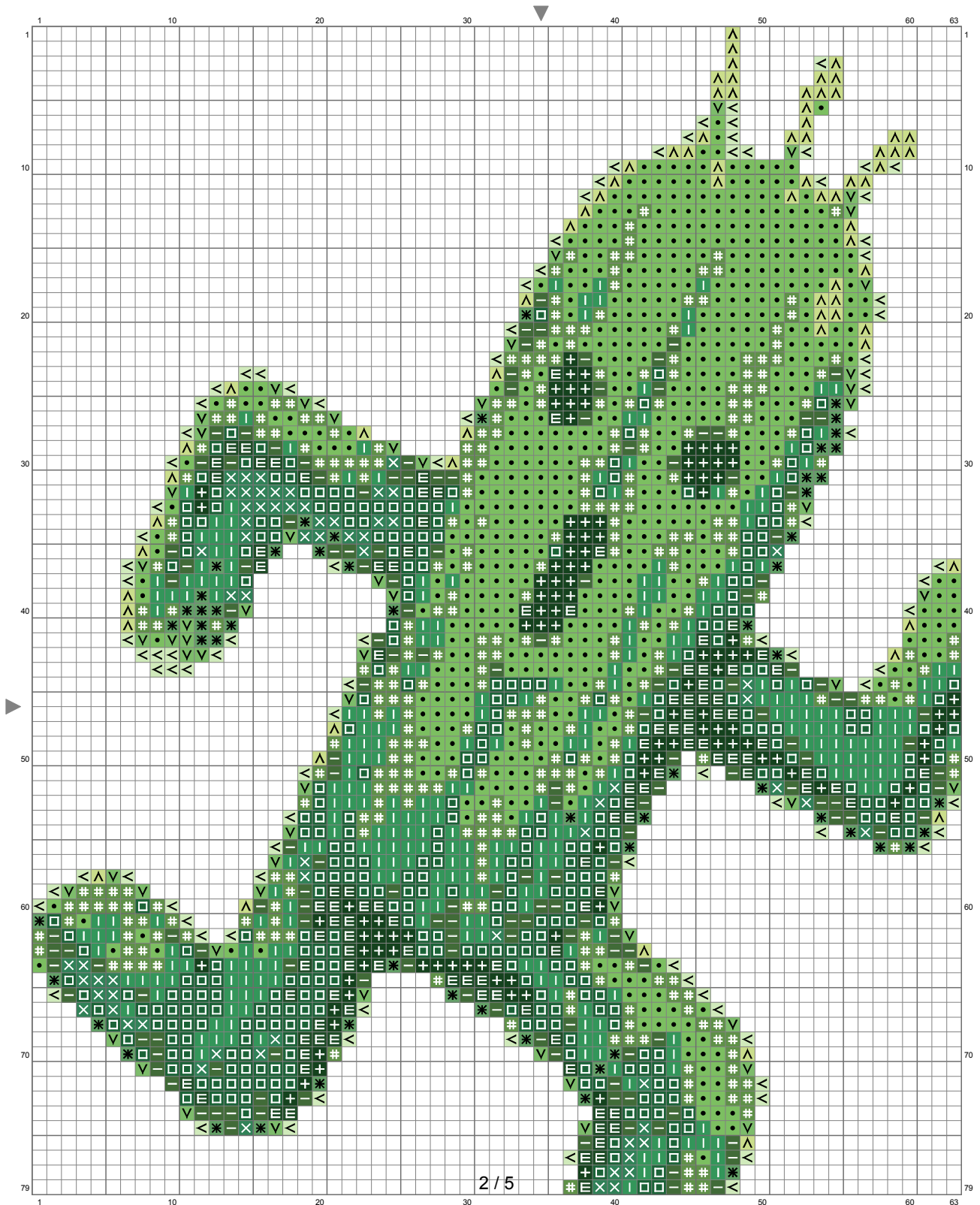


Untitled

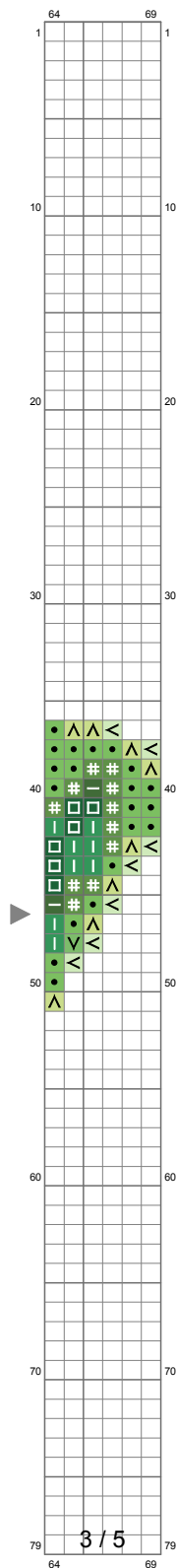


Untitled



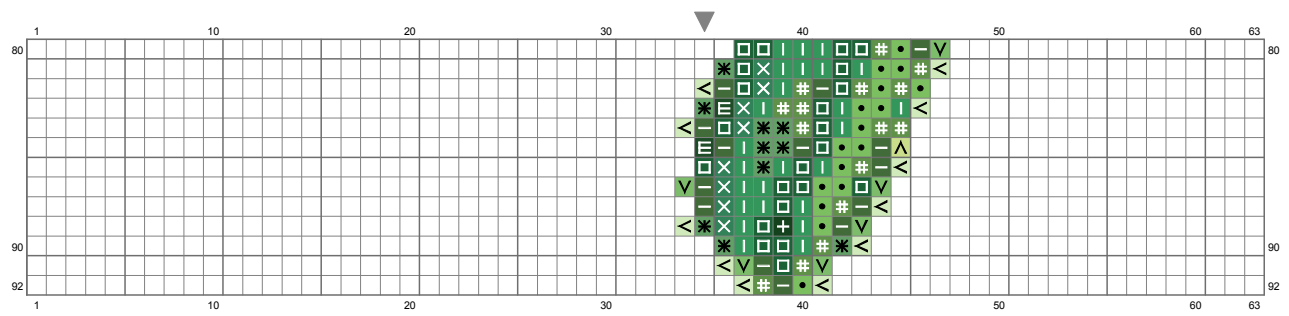
(This chart is printed using KG-Chart LE for Cross Stitch.)

Untitled

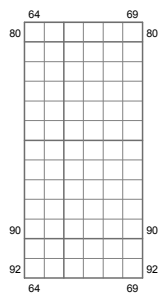


(This chart is printed using KG-Chart LE for Cross Stitch.)

Untitled



Untitled



(This chart is printed using KG-Chart LE for Cross Stitch.)

Stitch Count: 69w x 92h

Finished Size: 25.03 cm x 33.38 cm (14 ct./inch)

Cloth: Aida

Cloth's Color: White

of colors: 12 Colors

Color Table (DMC)

Cross Stitch

+	890	(114 ct)
≡	319	(112 ct)
□	909	(388 ct)
—	986	(176 ct)
×	700	(75 ct)
✱	702	(67 ct)
I	701	(335 ct)
#	988	(354 ct)
●	906	(624 ct)
V	703	(66 ct)
^	3348	(83 ct)
<	772	(119 ct)