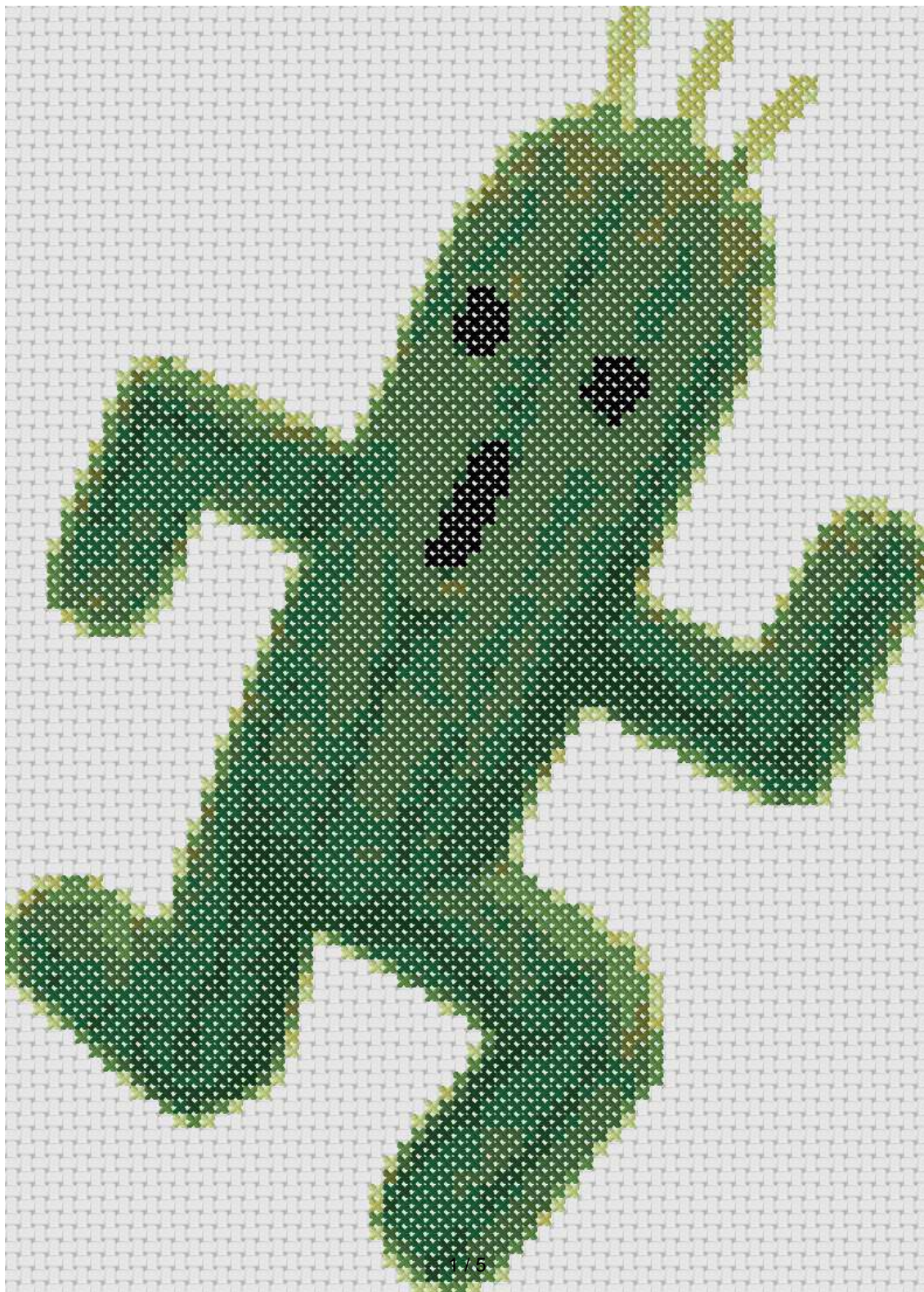
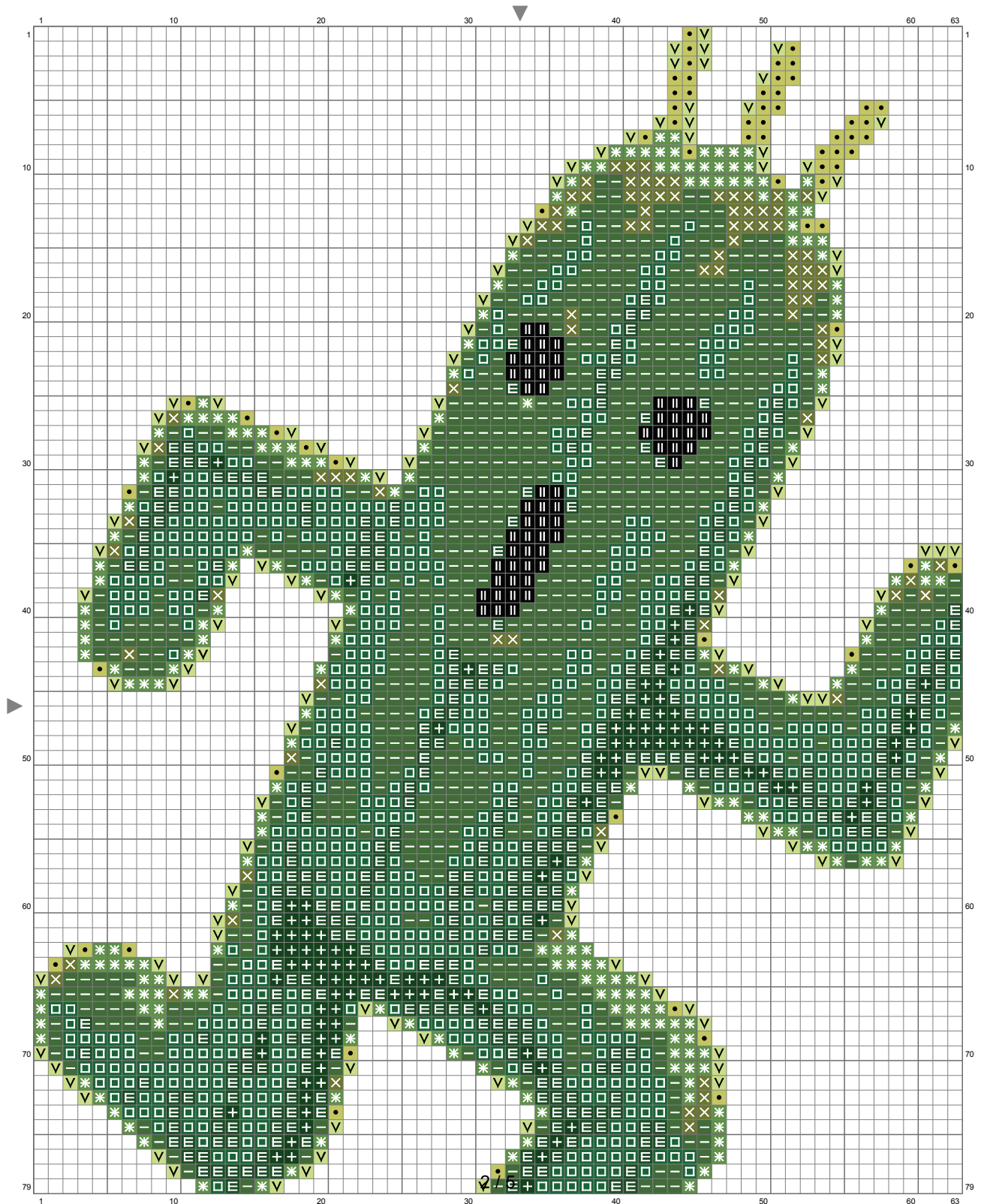


Untitled

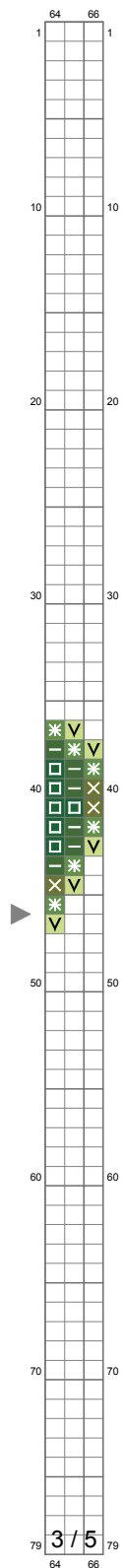


Untitled



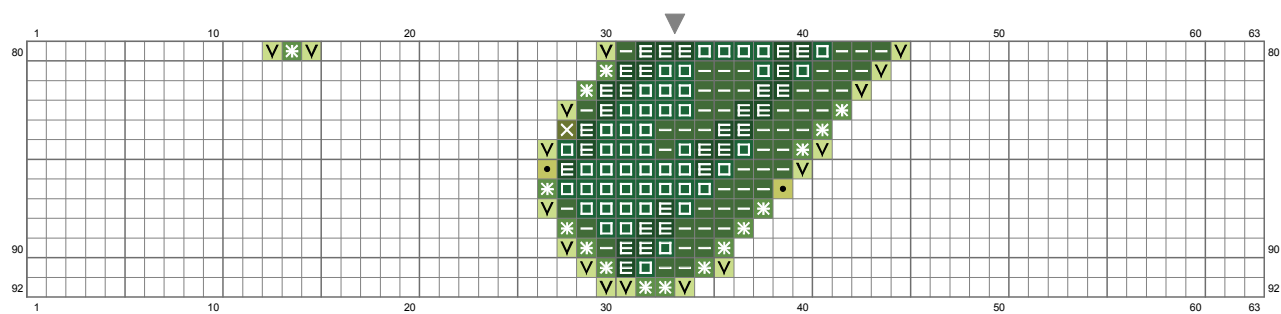
(This chart is printed using KG-Chart LE for Cross Stitch.)

Untitled



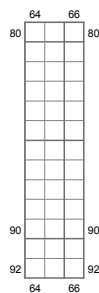
(This chart is printed using KG-Chart LE for Cross Stitch.)

Untitled



(This chart is printed using KG-Chart LE for Cross Stitch.)

Untitled



(This chart is printed using KG-Chart LE for Cross Stitch.)

Stitch Count: 66w x 92h

Finished Size: 23.94 cm x 33.38 cm (14 ct./inch)










Cloth: Aida

Cloth's Color: White

of colors: 9 Colors

Color Table (DMC)

Cross Stitch

	890	(117 ct)
	319	(387 ct)
	909	(728 ct)
	986	(820 ct)
	469	(95 ct)
	988	(248 ct)
	166	(66 ct)
	3348	(148 ct)
	310	(60 ct)