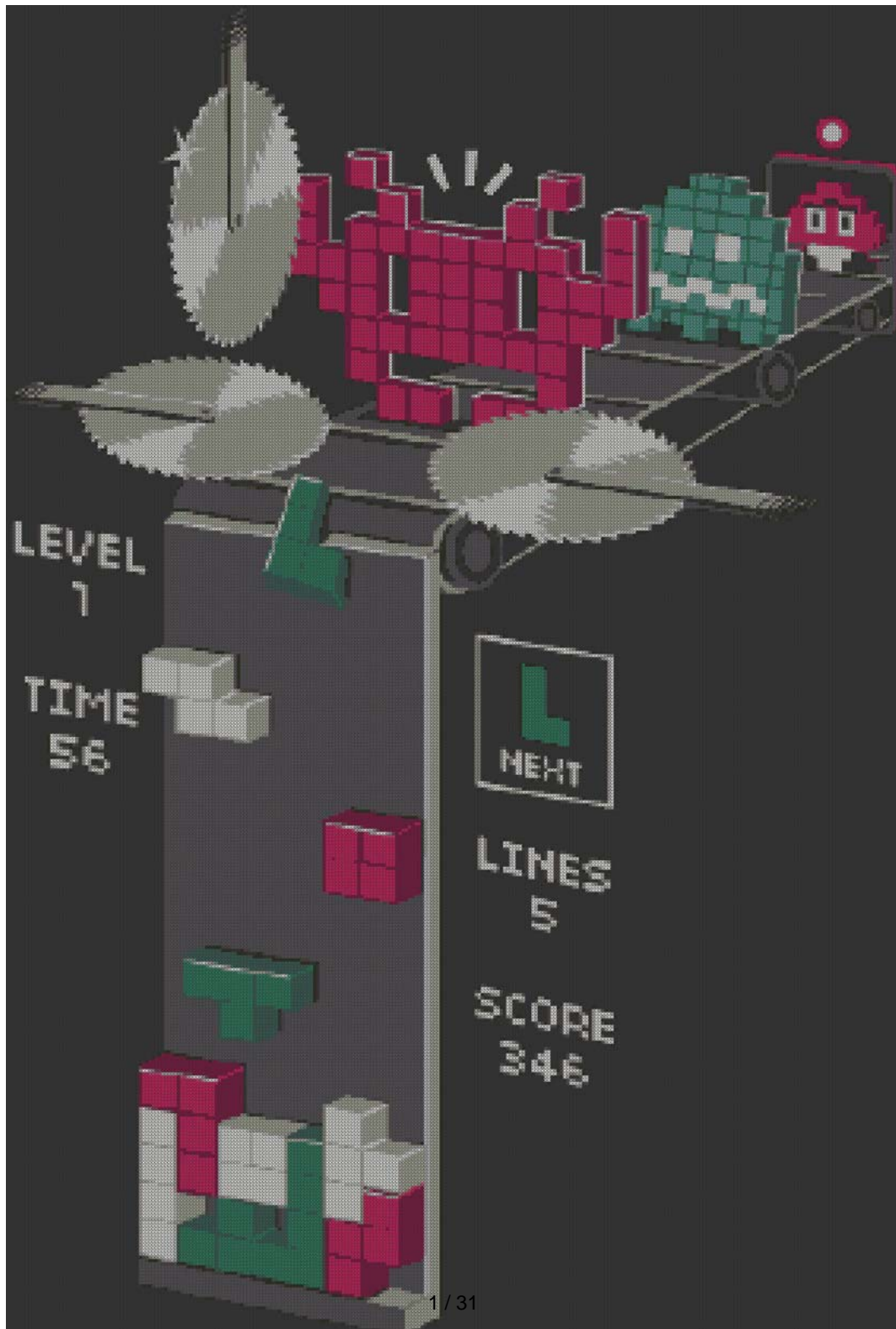
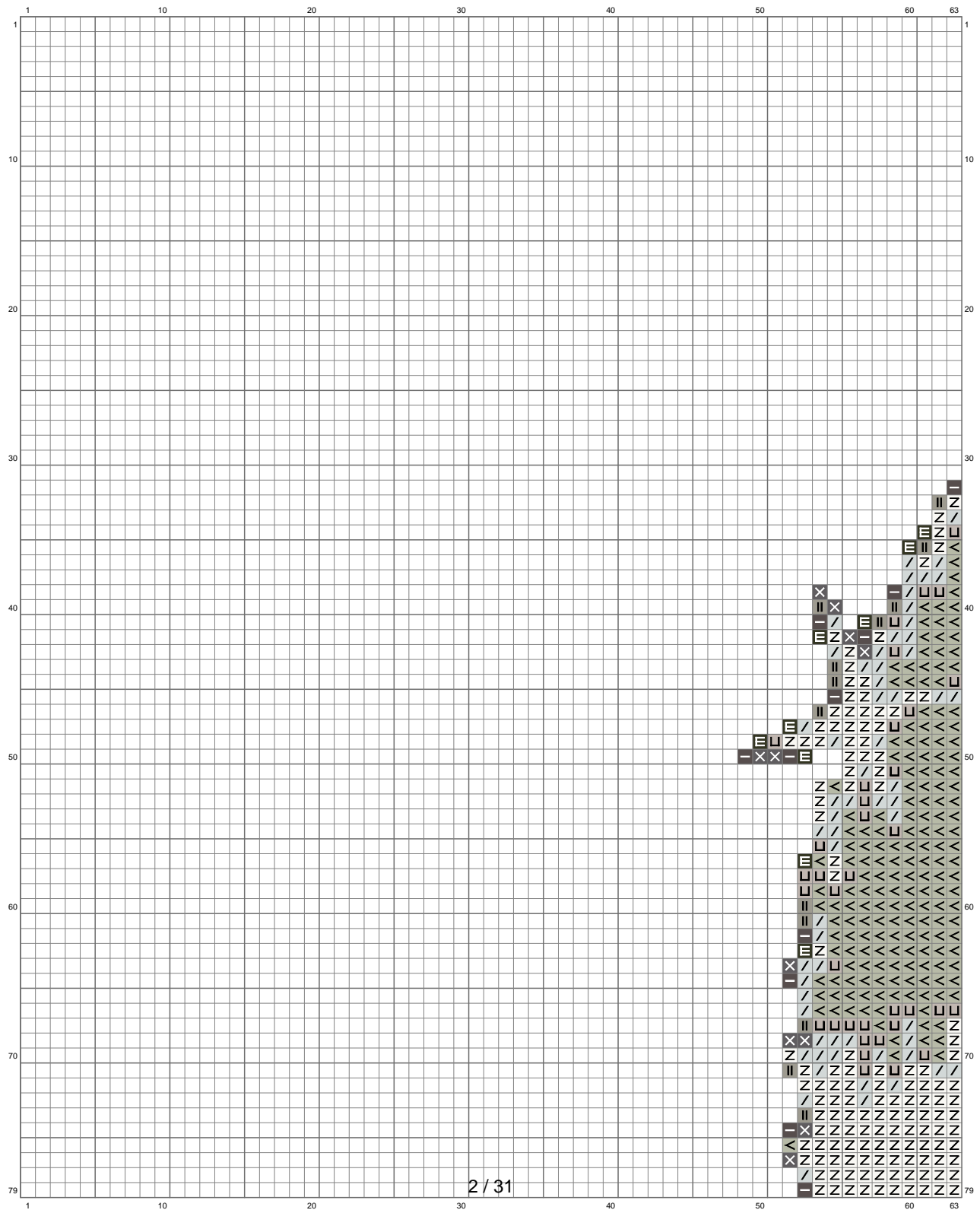


# Untitled

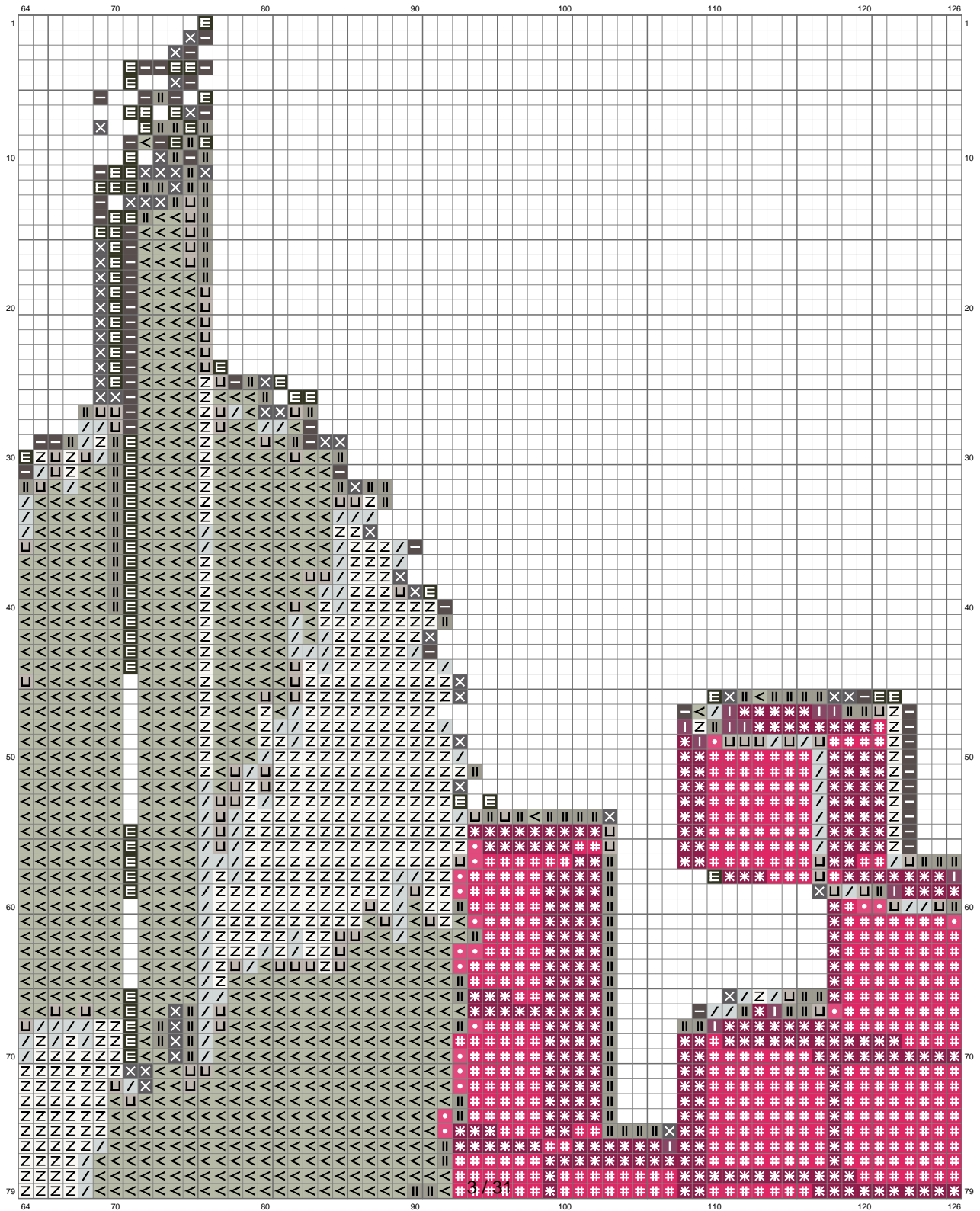


# Untitled



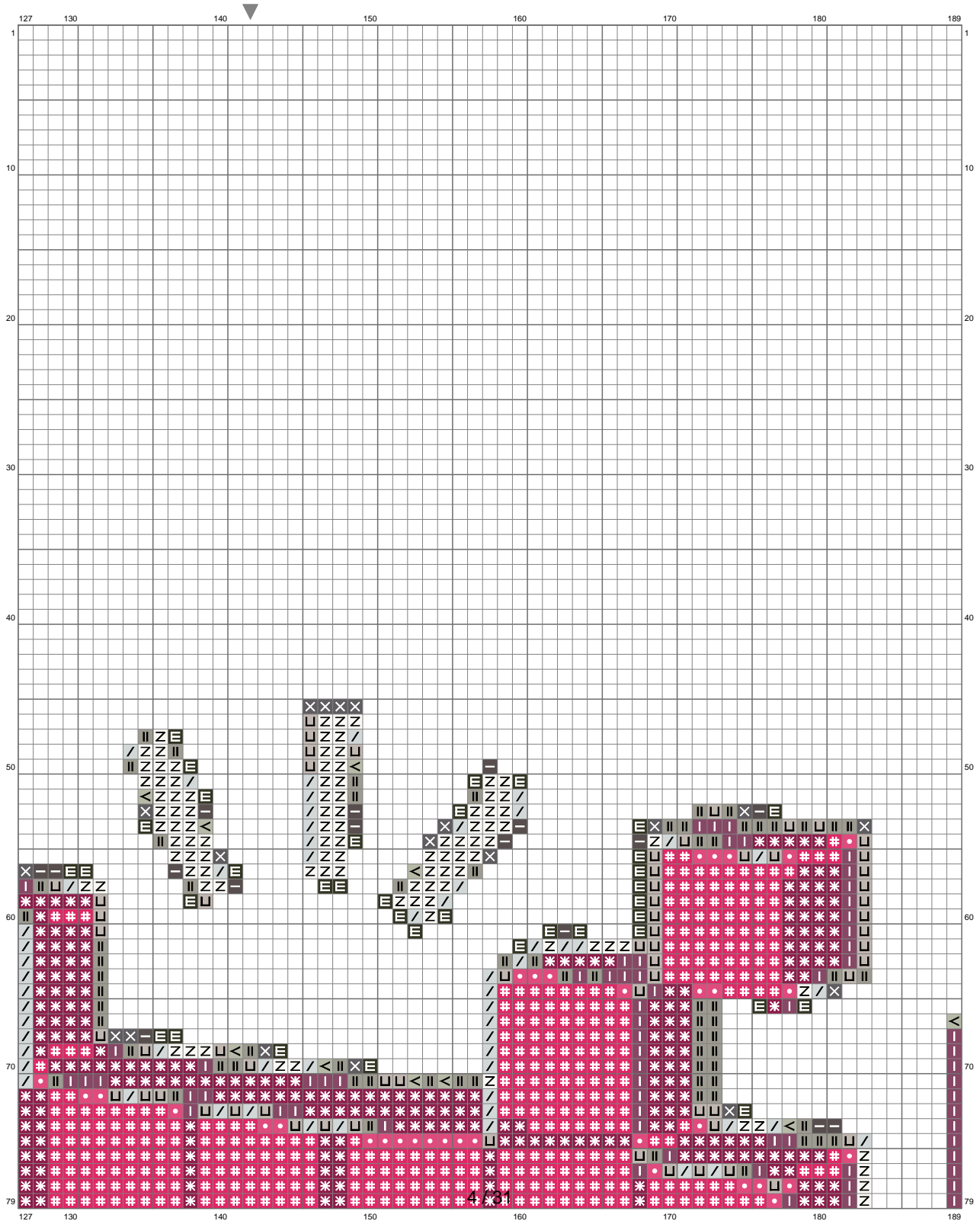
(This chart is printed using KG-Chart LE for Cross Stitch.)

# Untitled



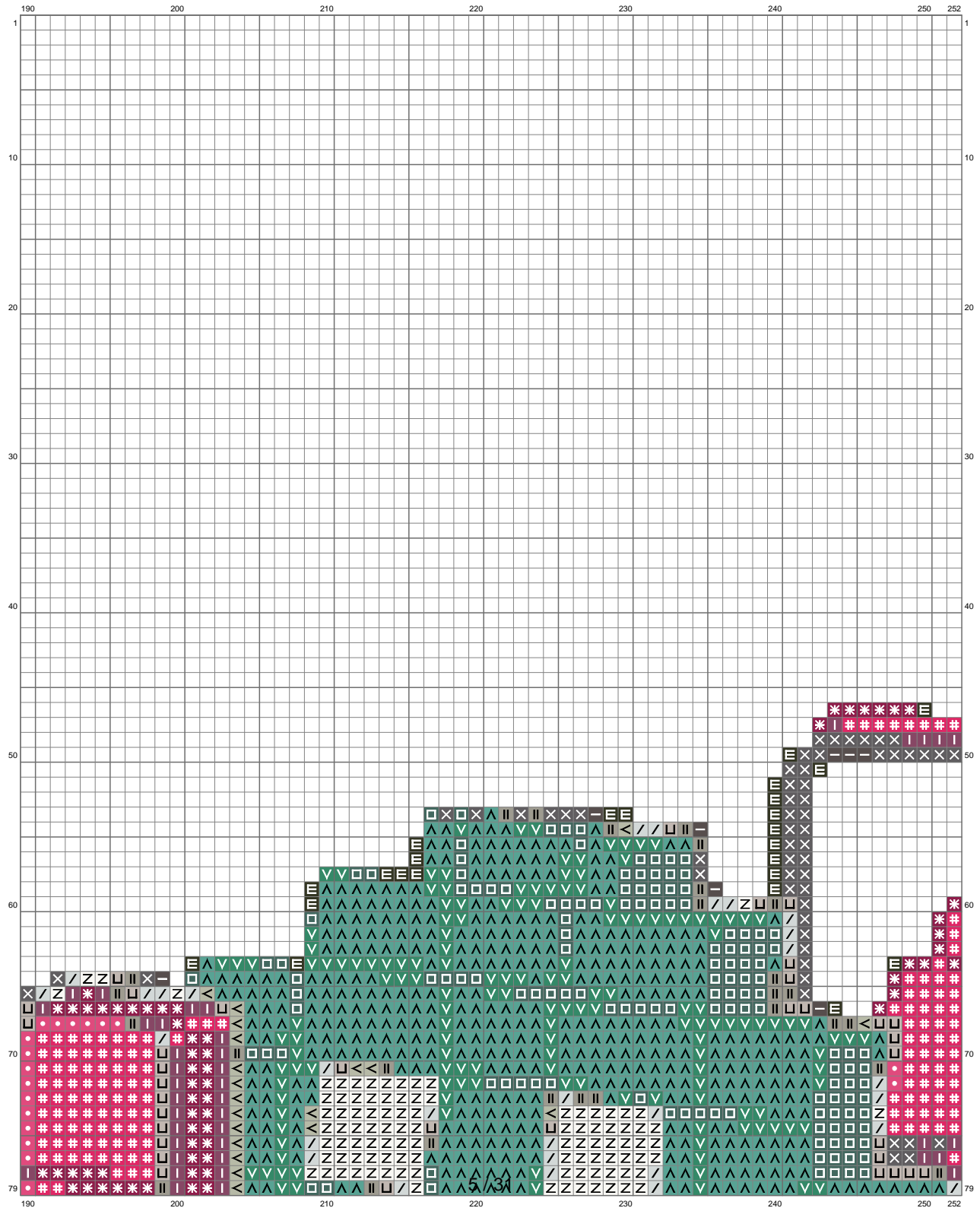
(This chart is printed using KG-Chart LE for Cross Stitch.)

# Untitled



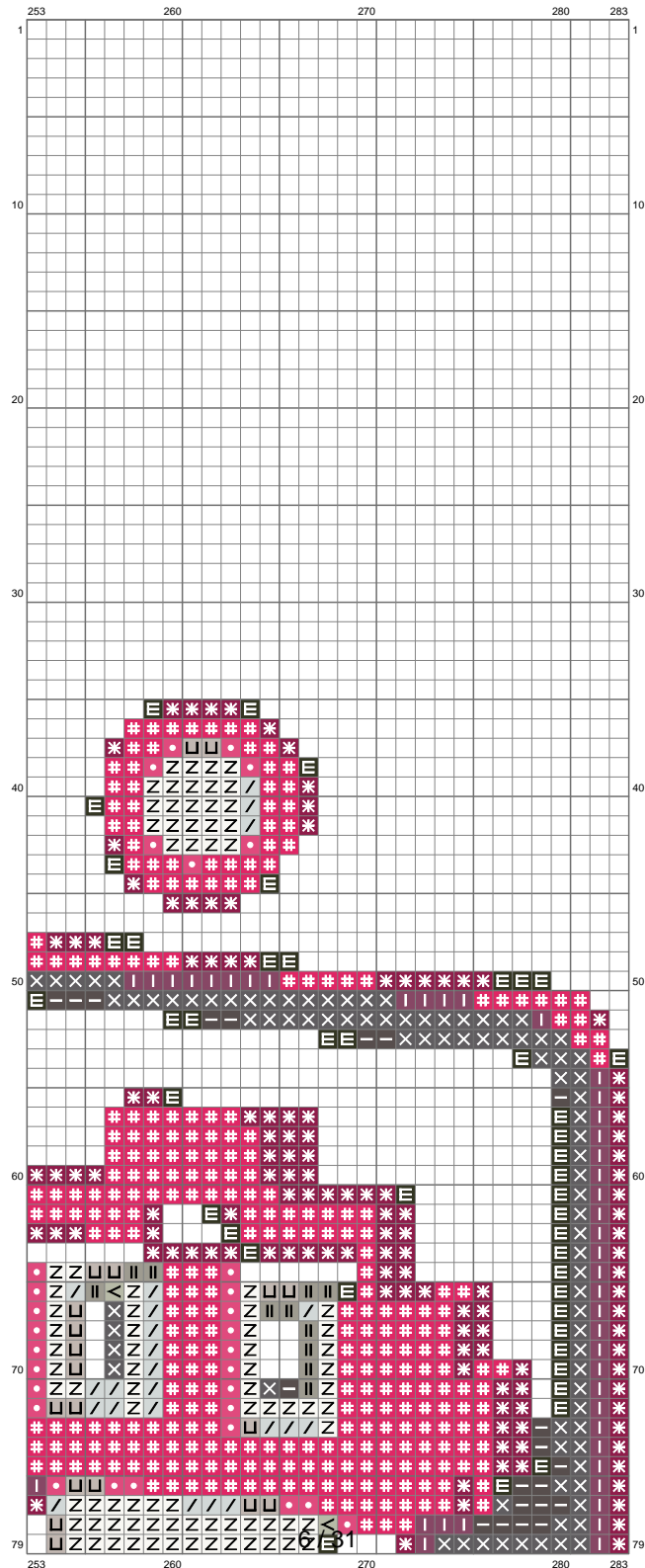
(This chart is printed using KG-Chart LE for Cross Stitch.)

# Untitled



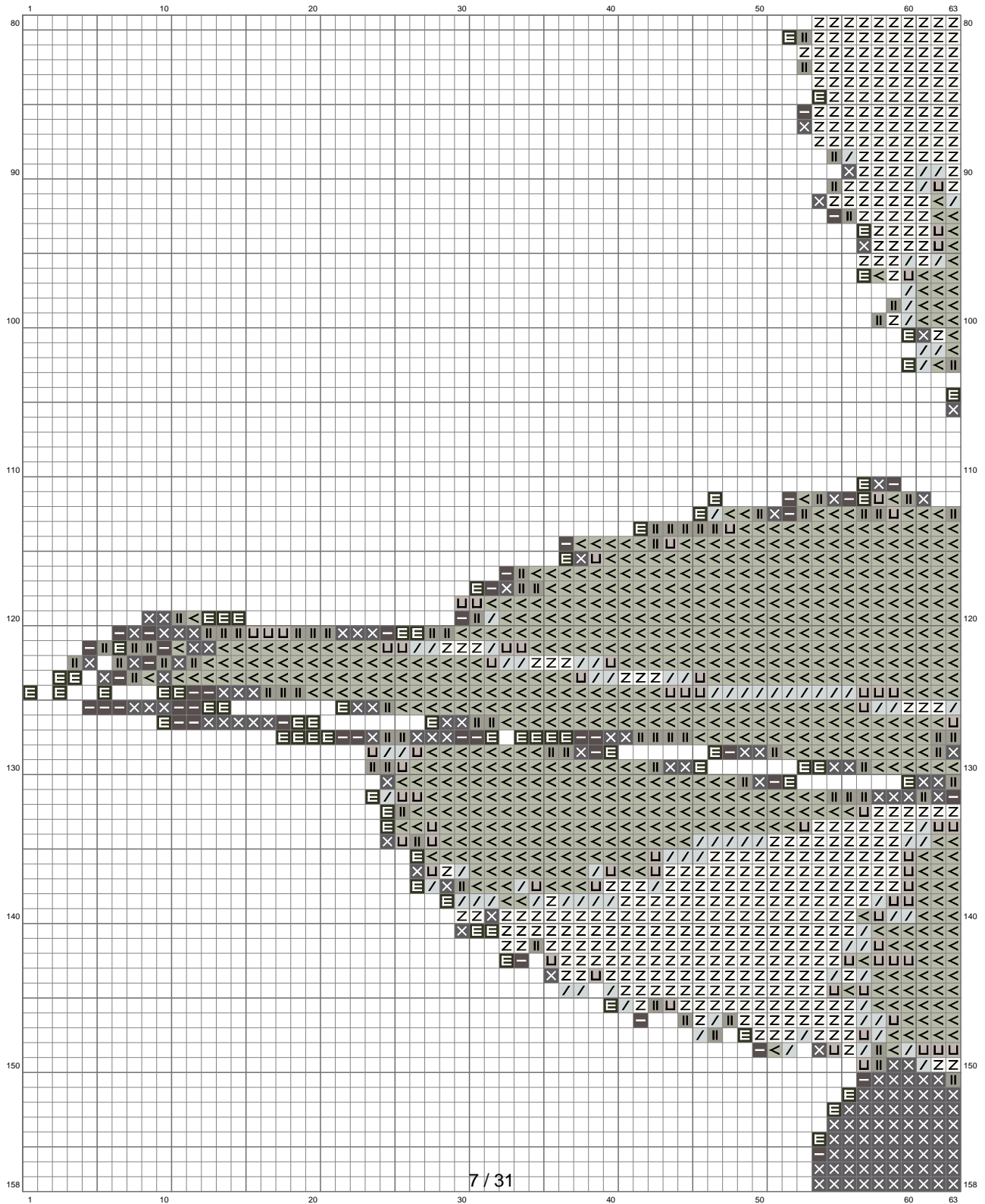
(This chart is printed using KG-Chart LE for Cross Stitch.)

# Untitled



(This chart is printed using KG-Chart LE for Cross Stitch.)

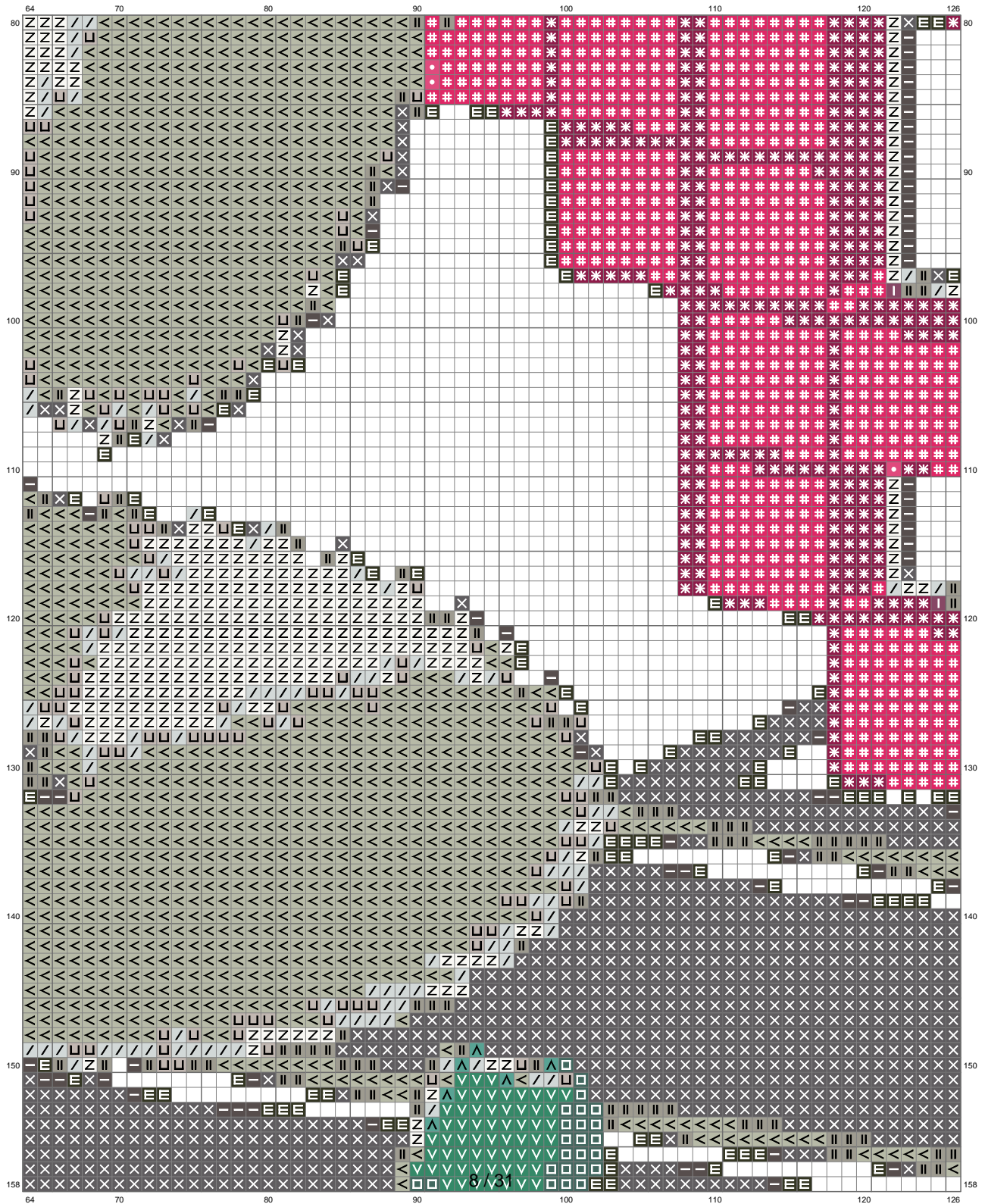
# Untitled



(This chart is printed using KG-Chart LE for Cross Stitch.)



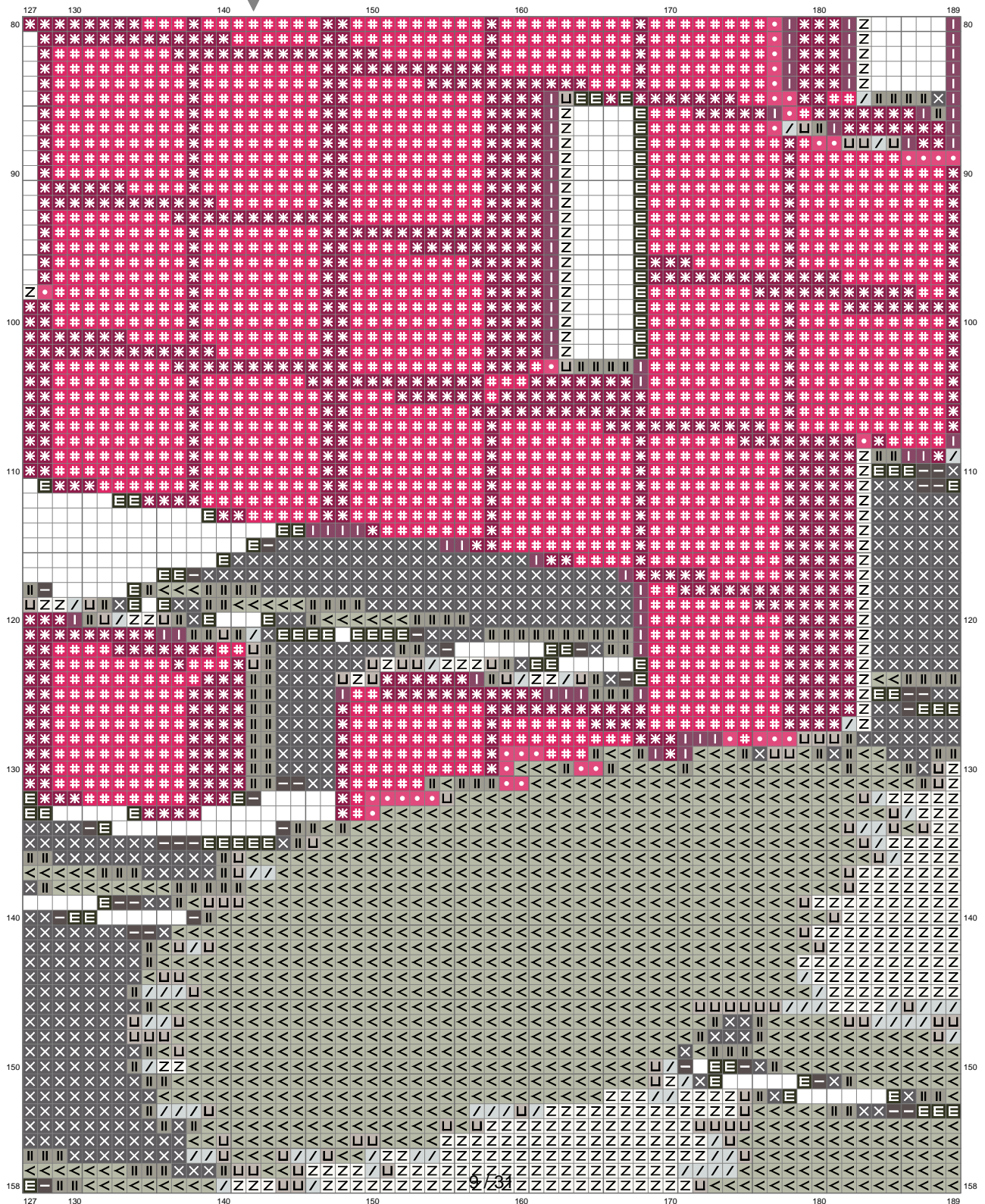
# Untitled



(This chart is printed using KG-Chart LE for Cross Stitch.)

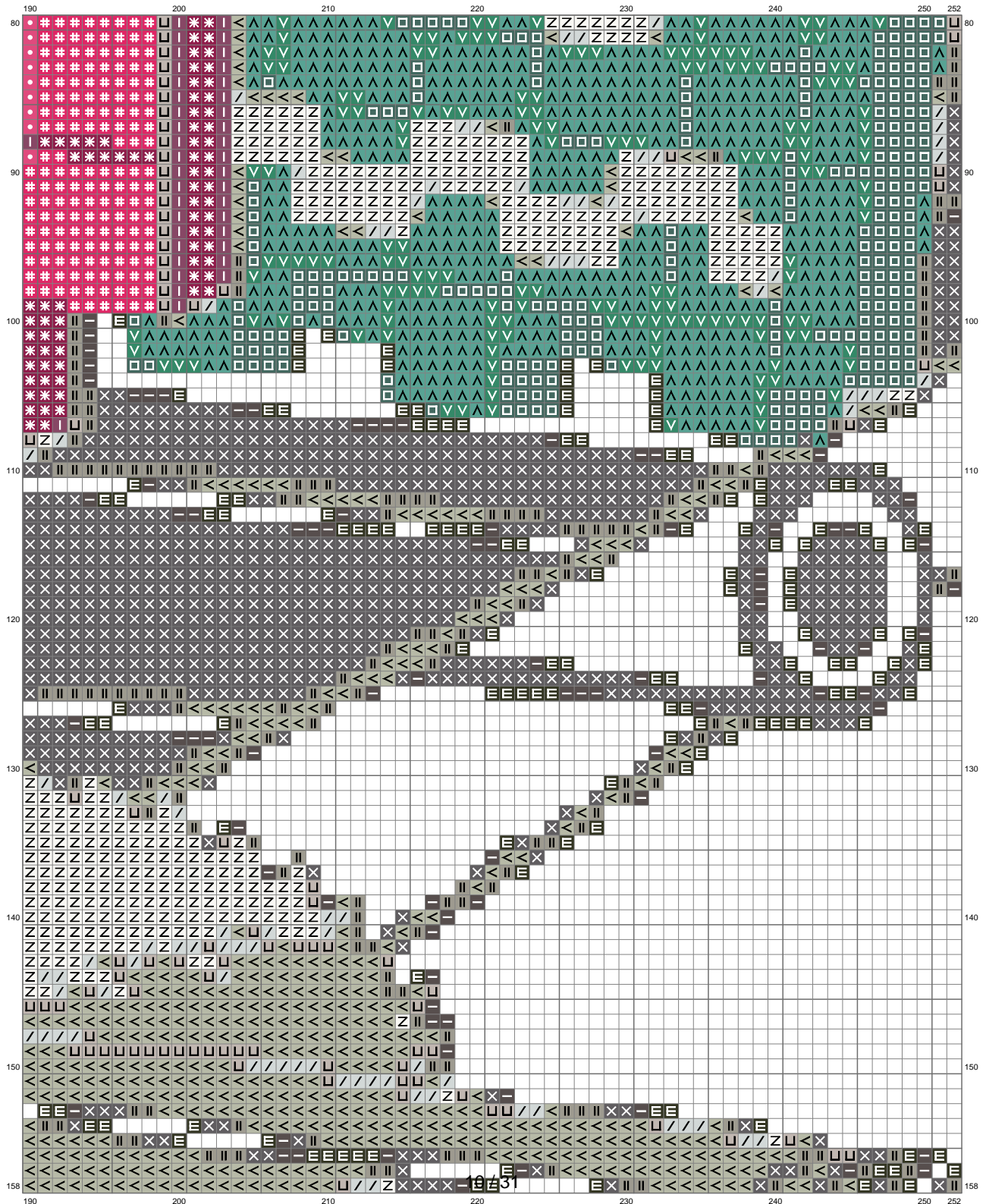


# Untitled



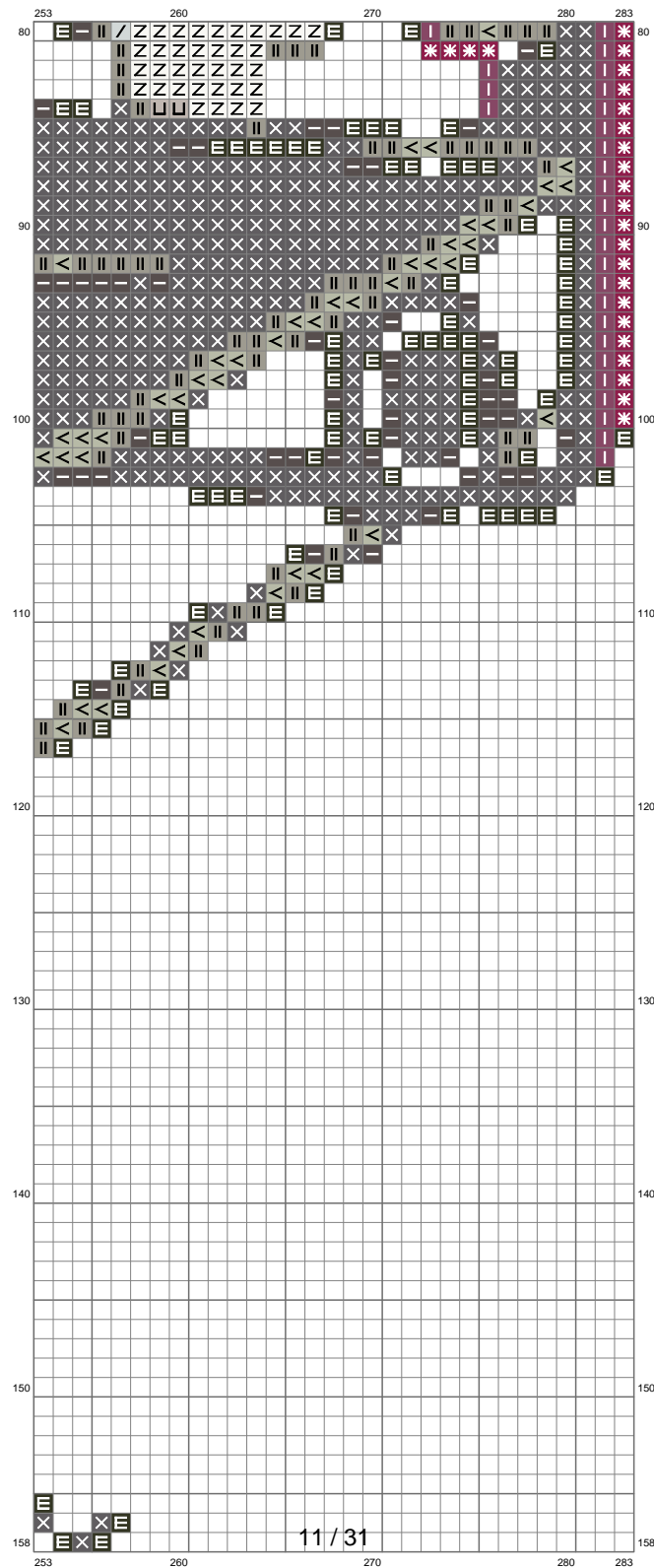
(This chart is printed using KG-Chart LE for Cross Stitch.)

# Untitled

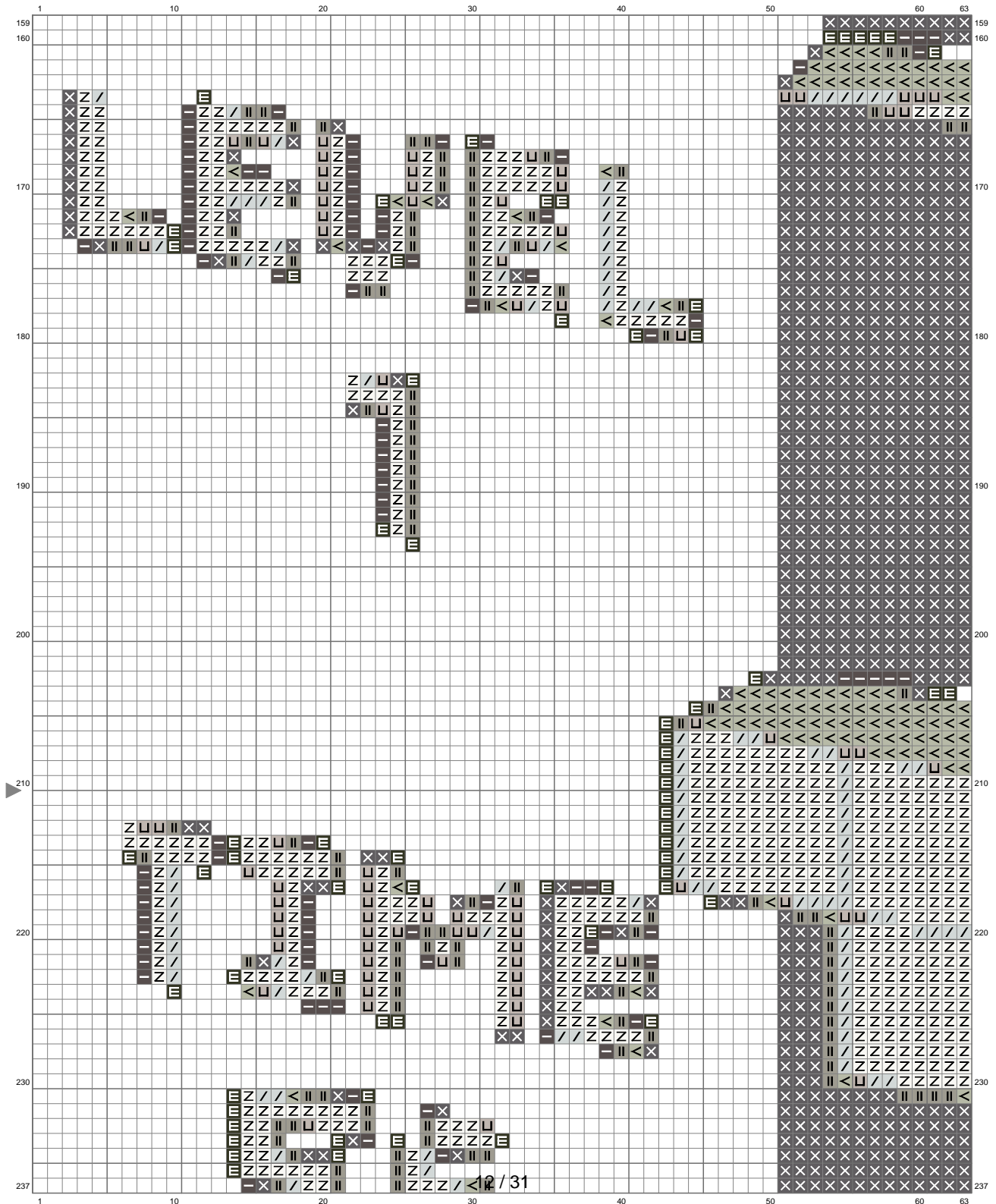


(This chart is printed using KG-Chart LE for Cross Stitch.)

# Untitled

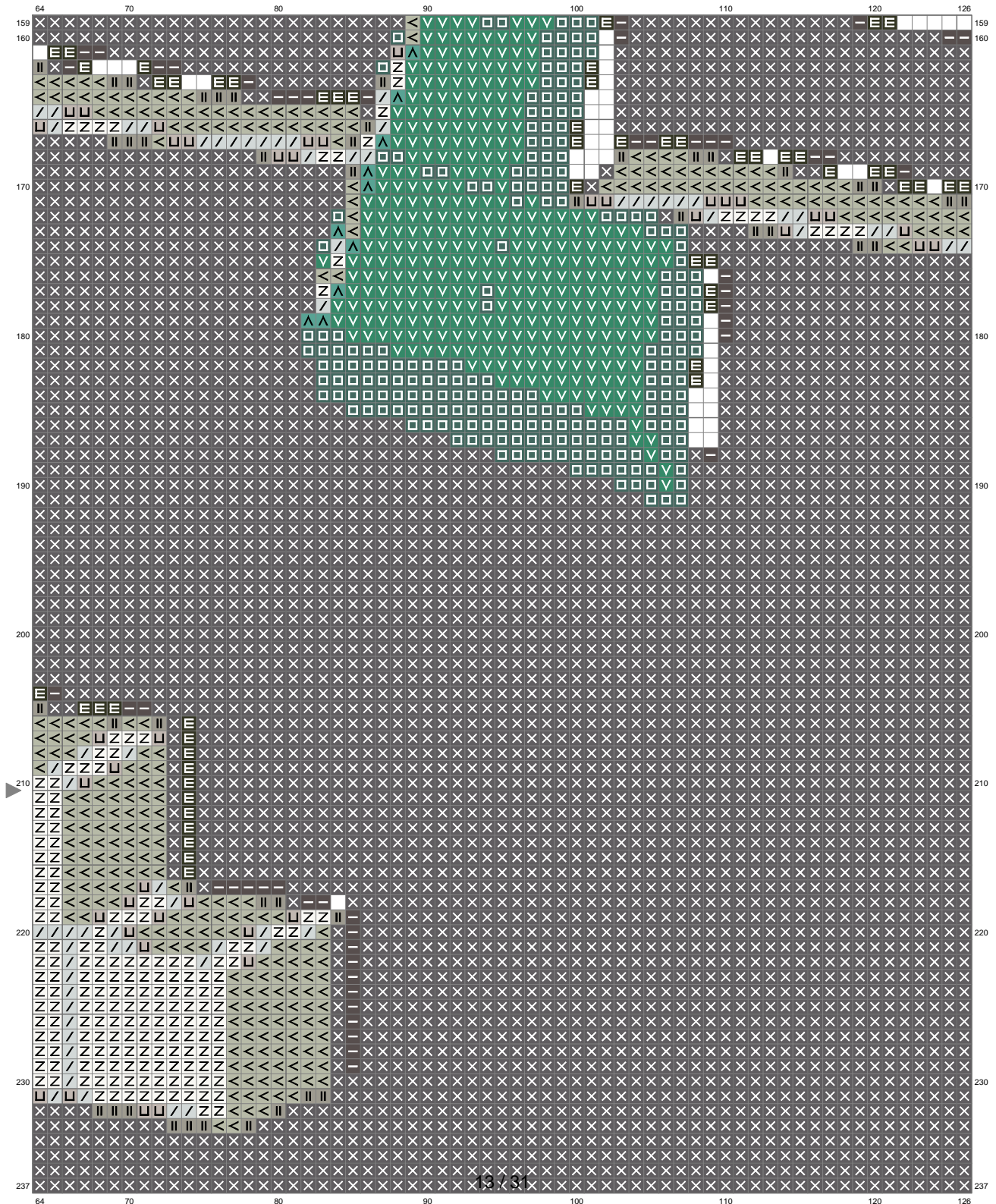


# Untitled



(This chart is printed using KG-Chart LE for Cross Stitch.)

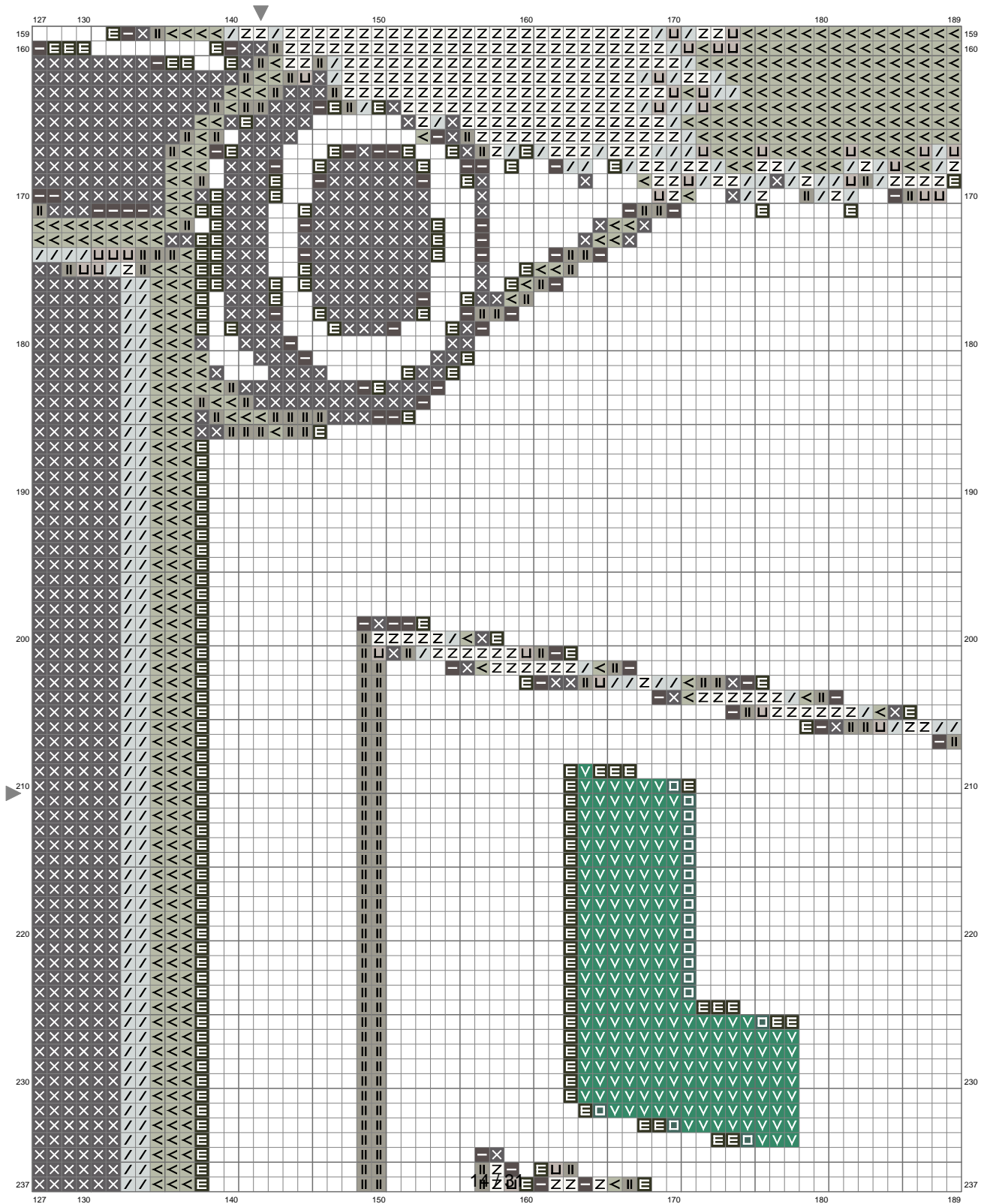
# Untitled



(This chart is printed using KG-Chart LE for Cross Stitch.)



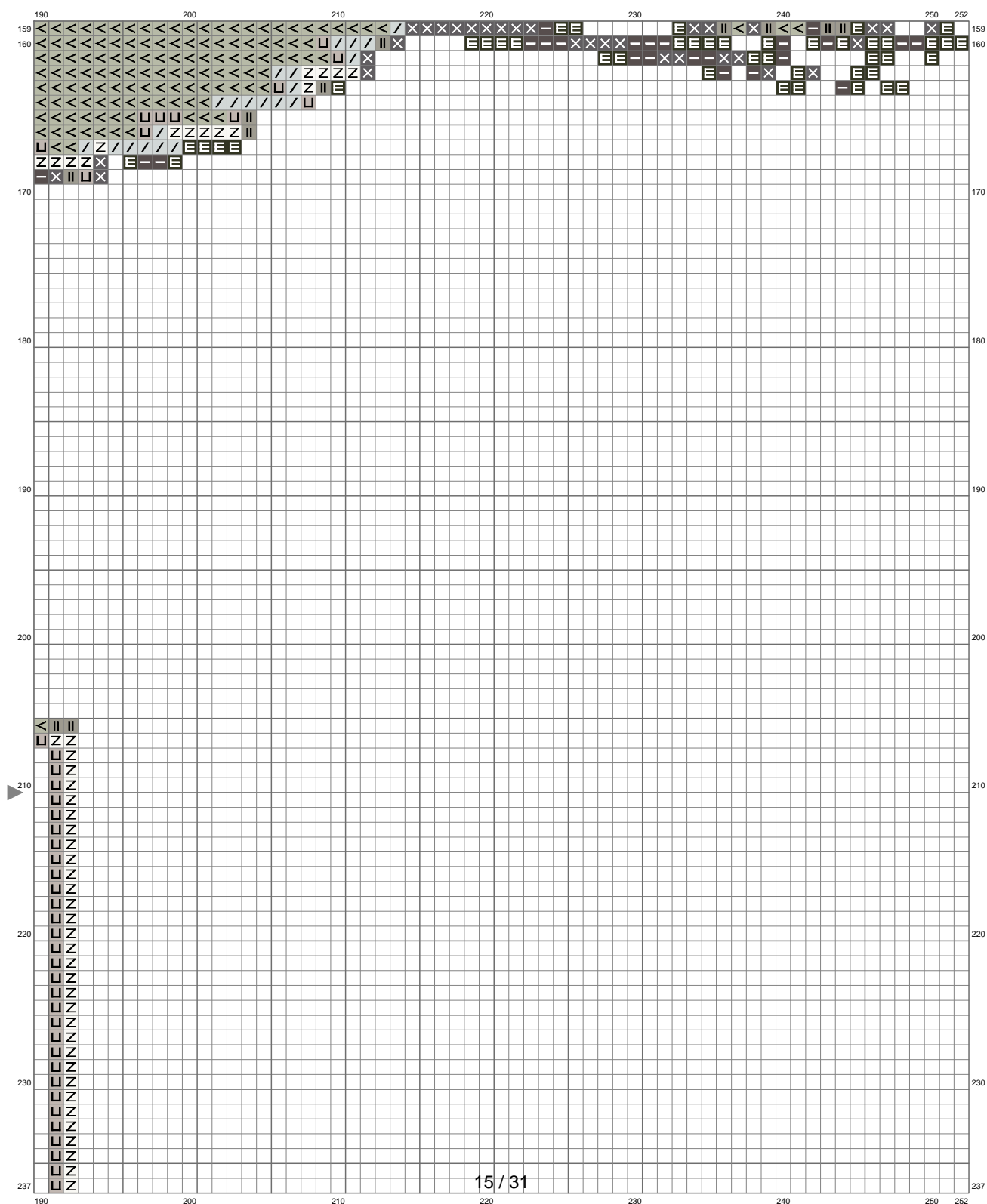
# Untitled



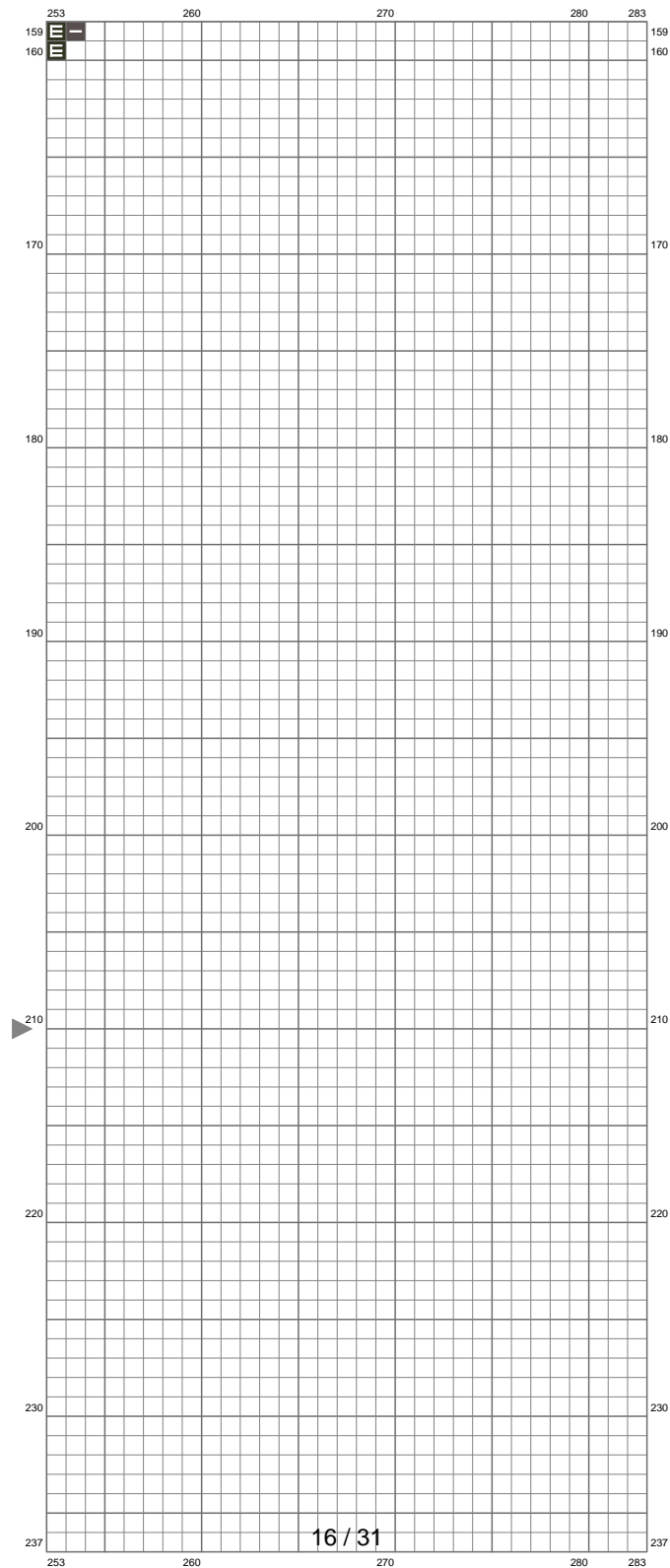
(This chart is printed using KG-Chart LE for Cross Stitch.)



# Untitled

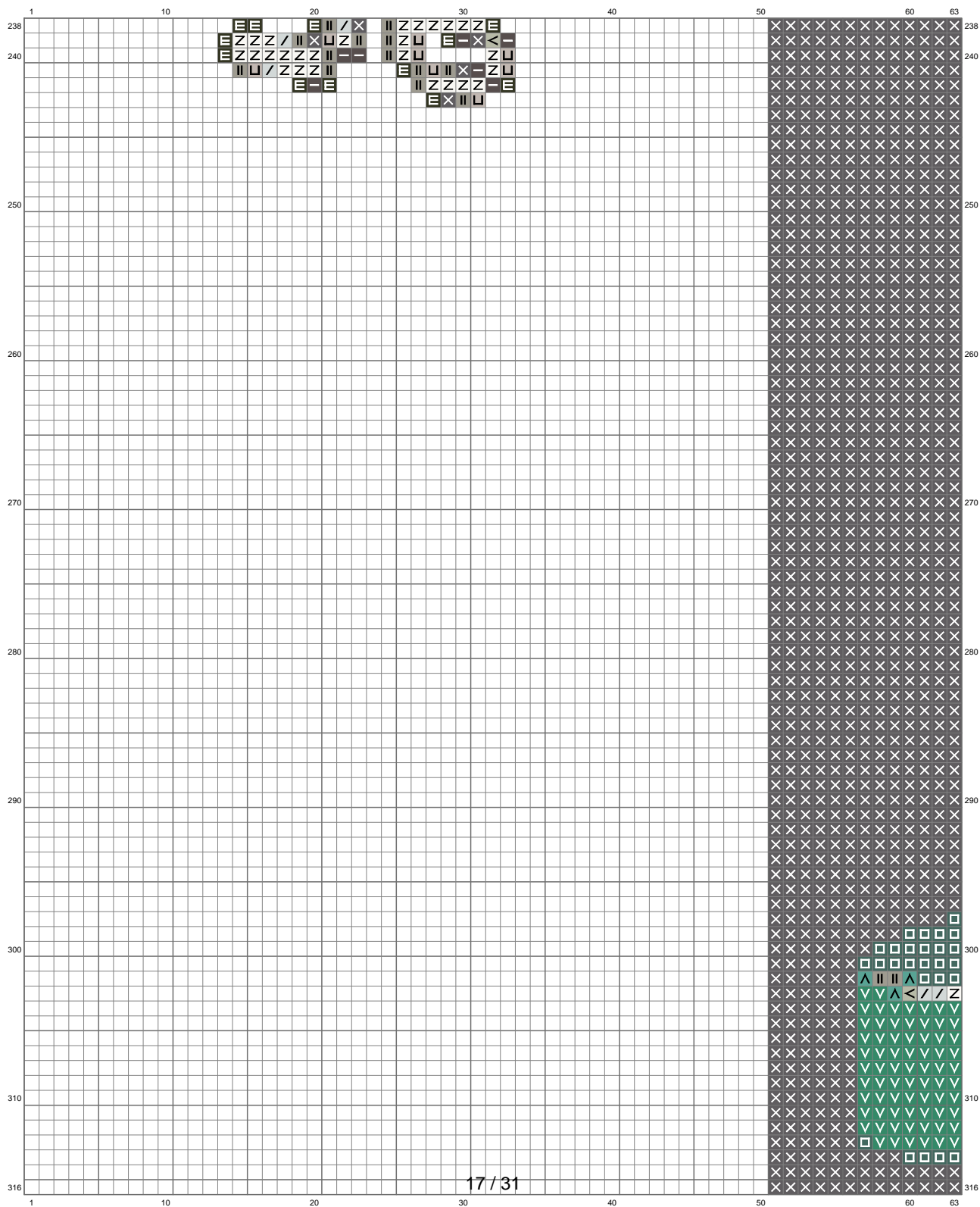


# Untitled

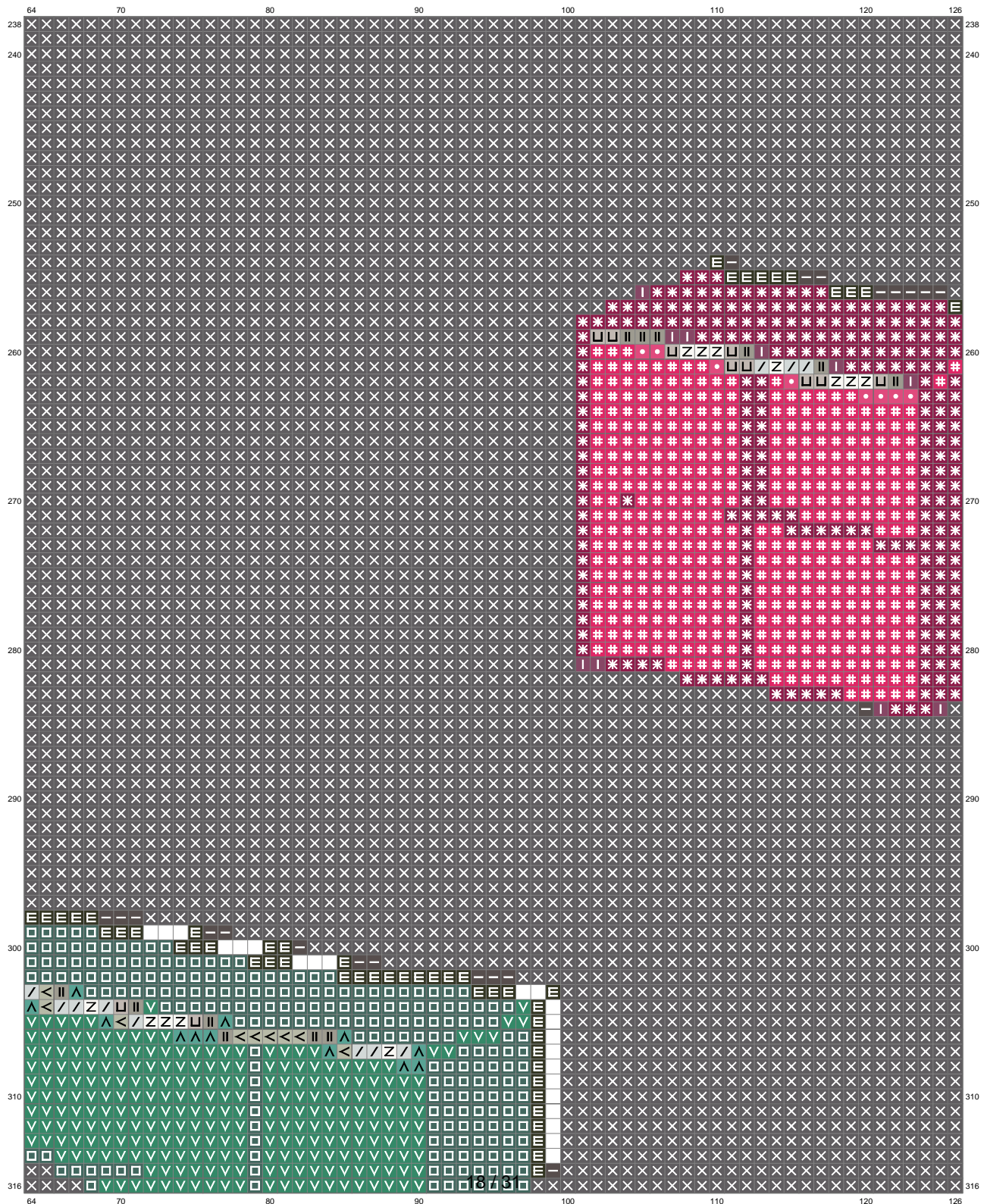


(This chart is printed using KG-Chart LE for Cross Stitch.)

# Untitled

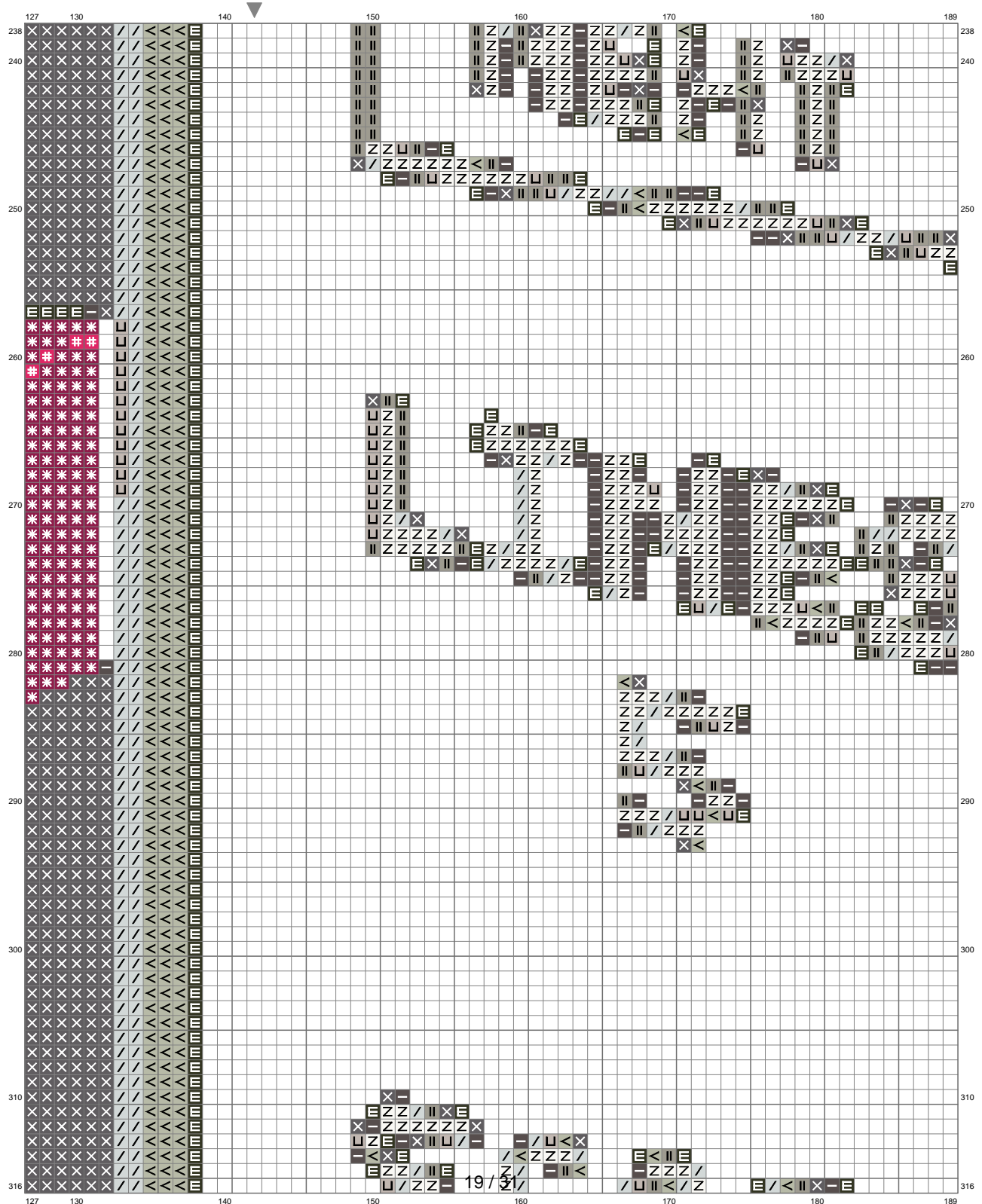


# Untitled



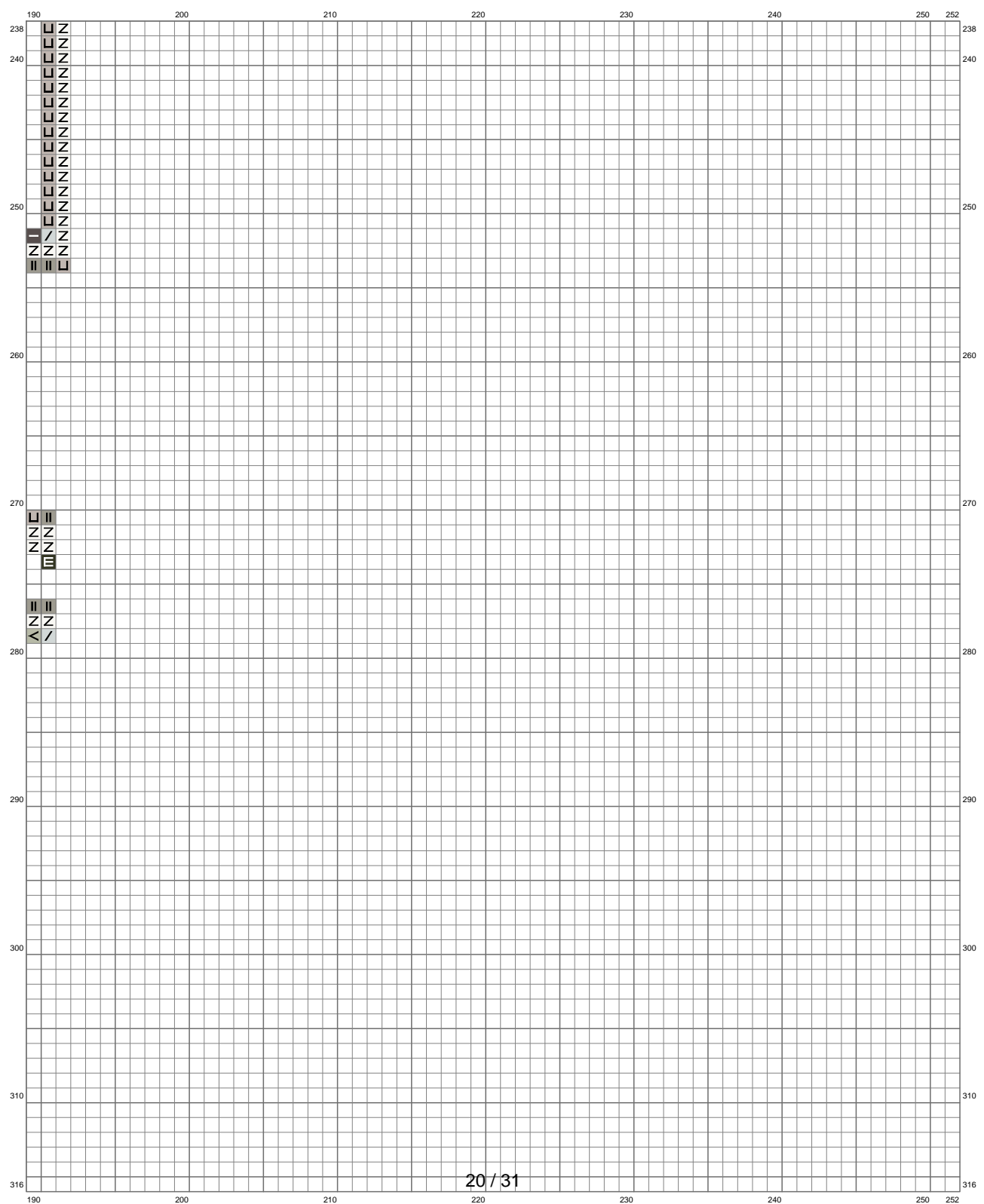
(This chart is printed using KG-Chart LE for Cross Stitch.)

# Untitled



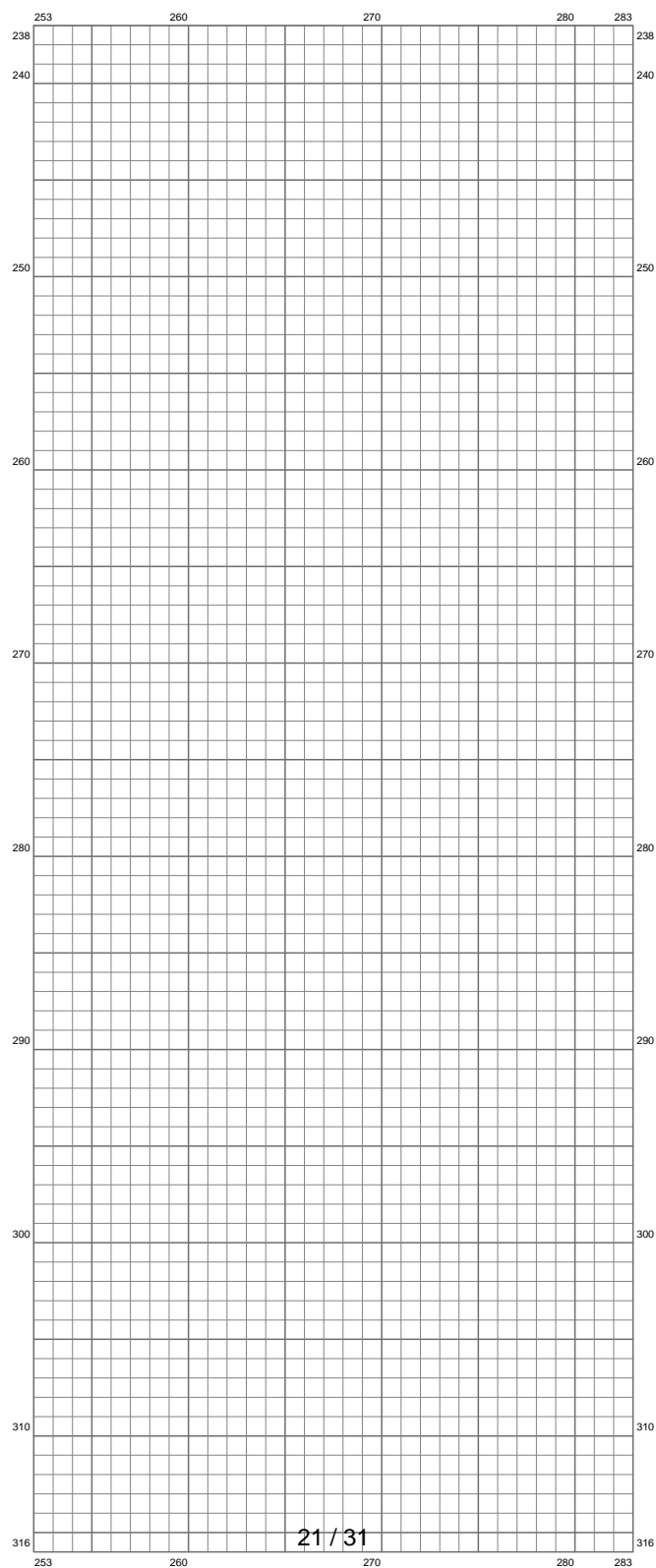
(This chart is printed using KG-Chart LE for Cross Stitch.)

Untitled



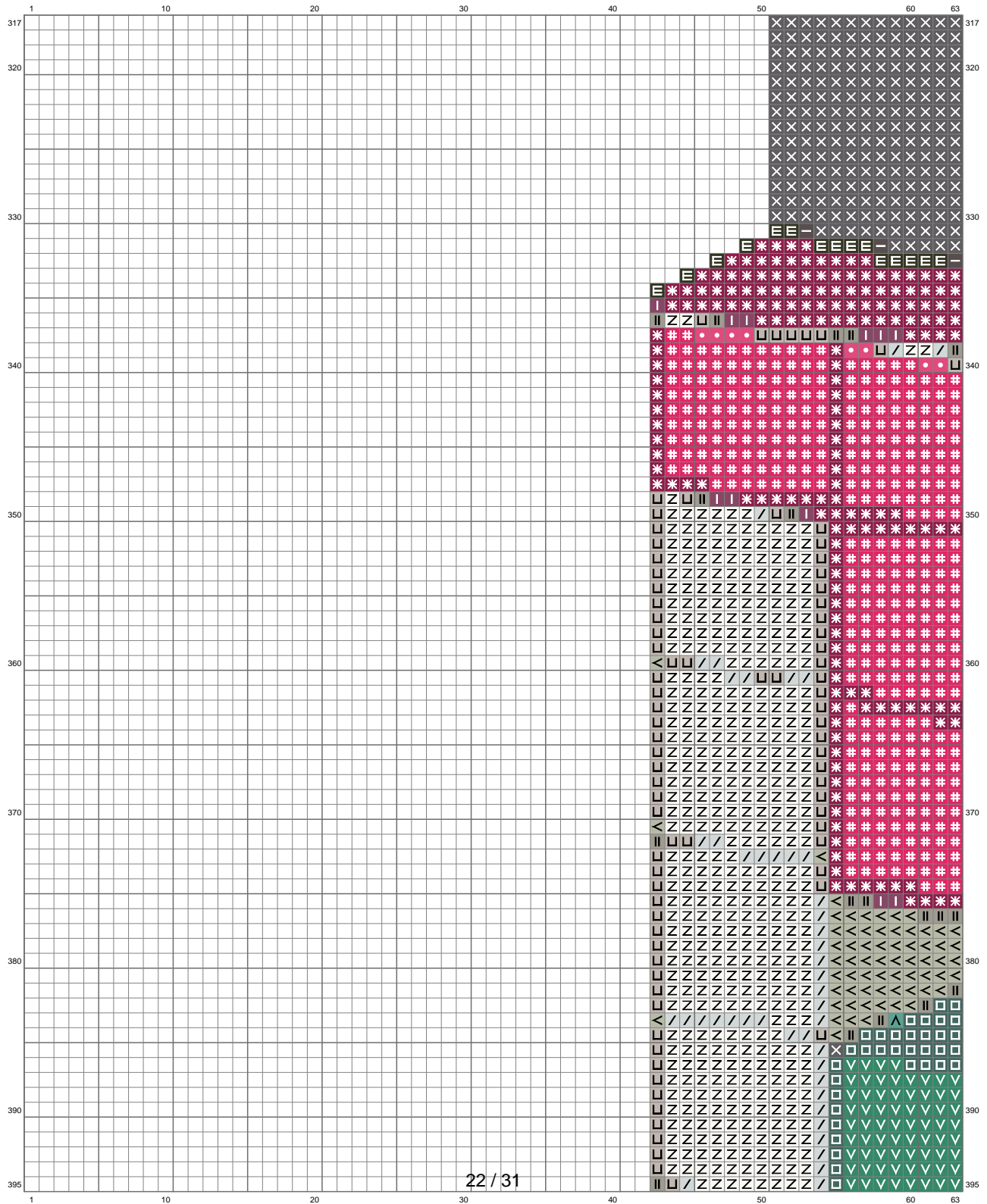


# Untitled



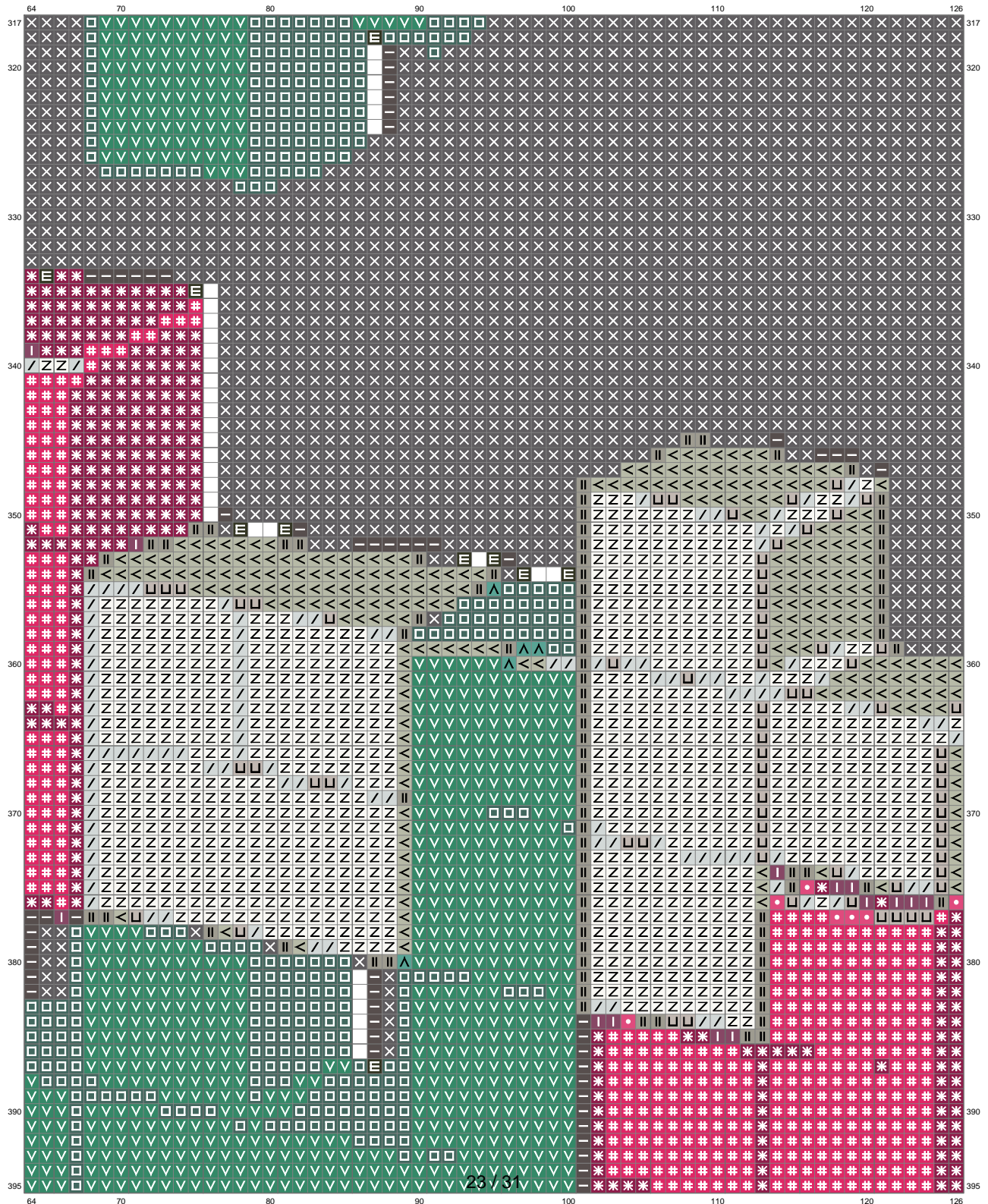
(This chart is printed using KG-Chart LE for Cross Stitch.)

# Untitled



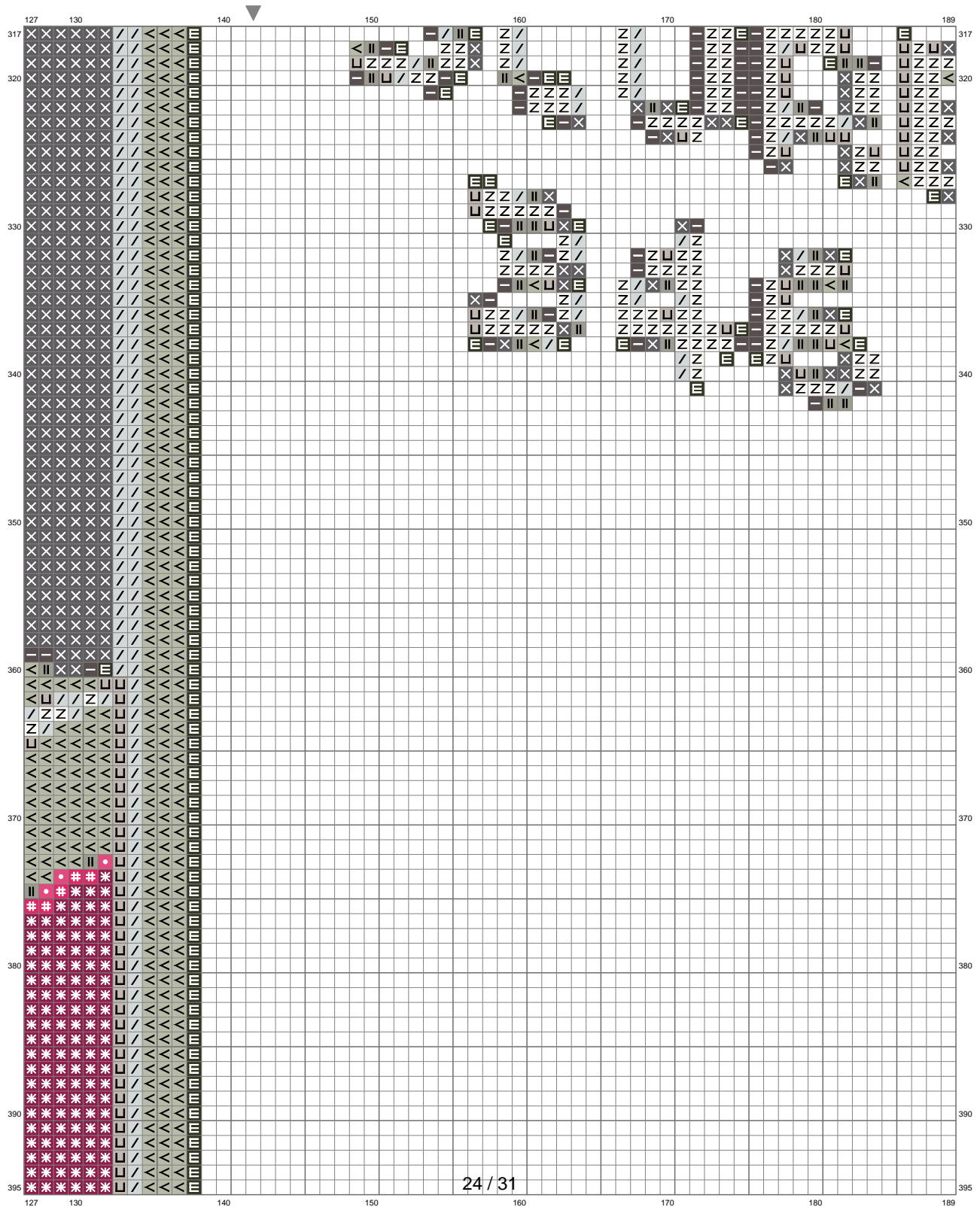
(This chart is printed using KG-Chart LE for Cross Stitch.)

# Untitled



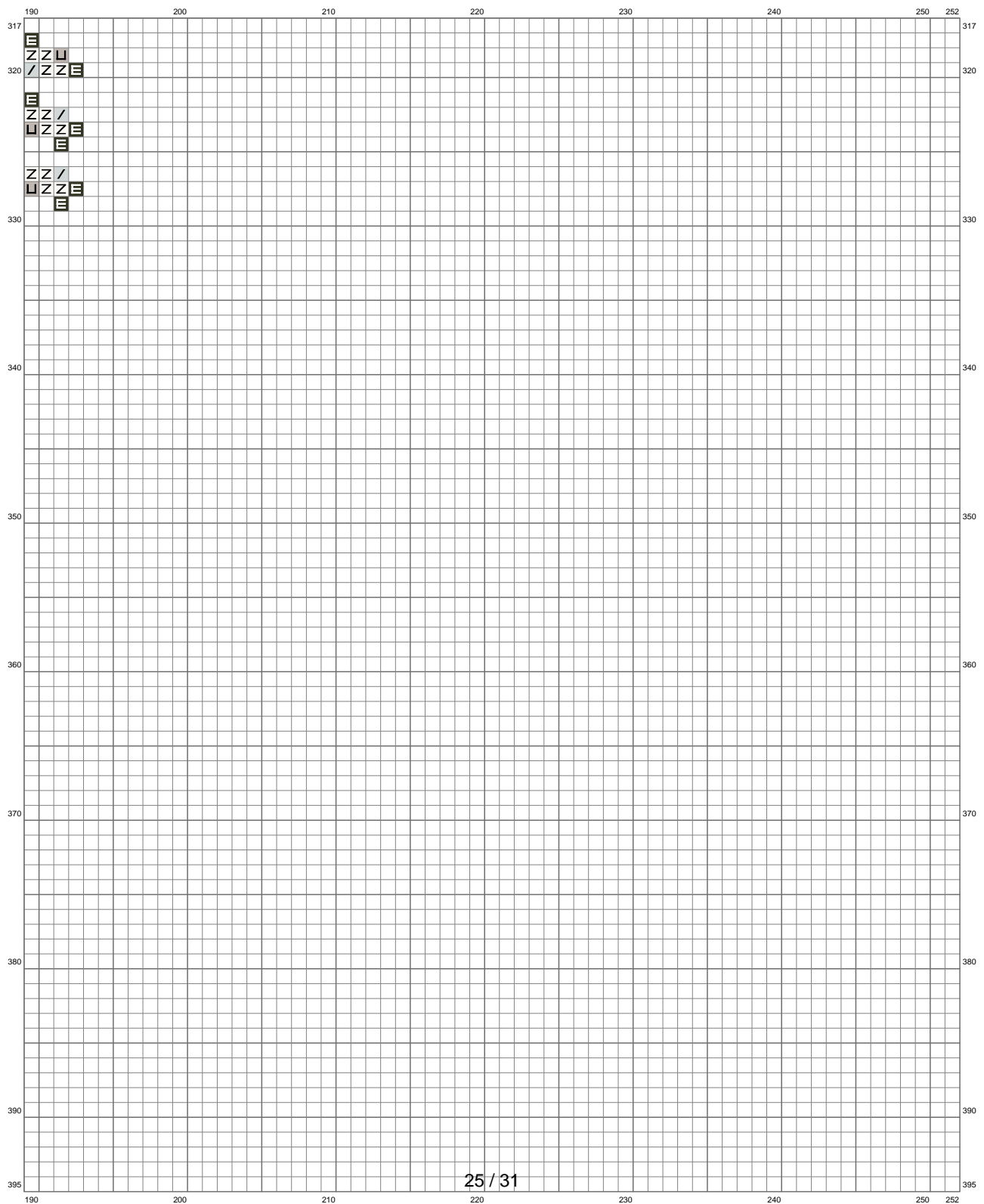
(This chart is printed using KG-Chart LE for Cross Stitch.)

# Untitled



(This chart is printed using KG-Chart LE for Cross Stitch.)

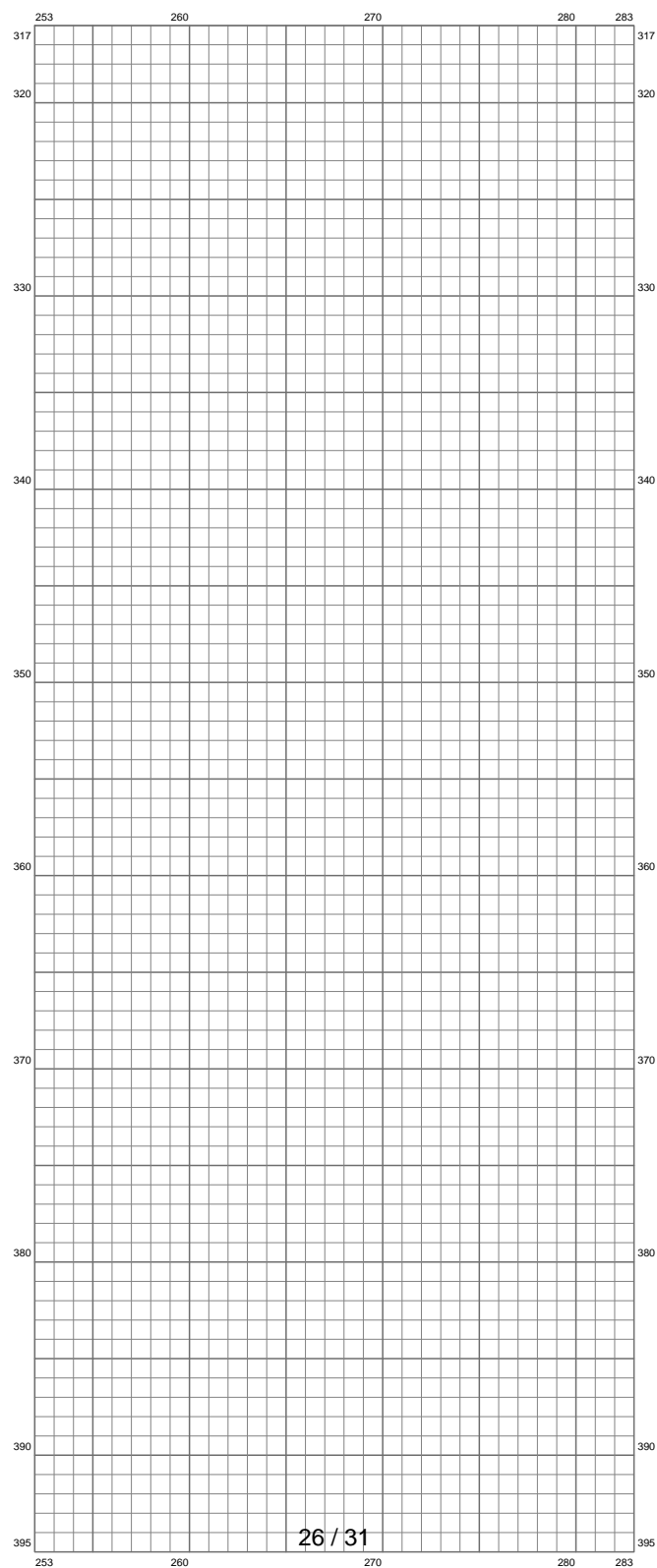
# Untitled



25 / 31

(This chart is printed using KG-Chart LE for Cross Stitch.)

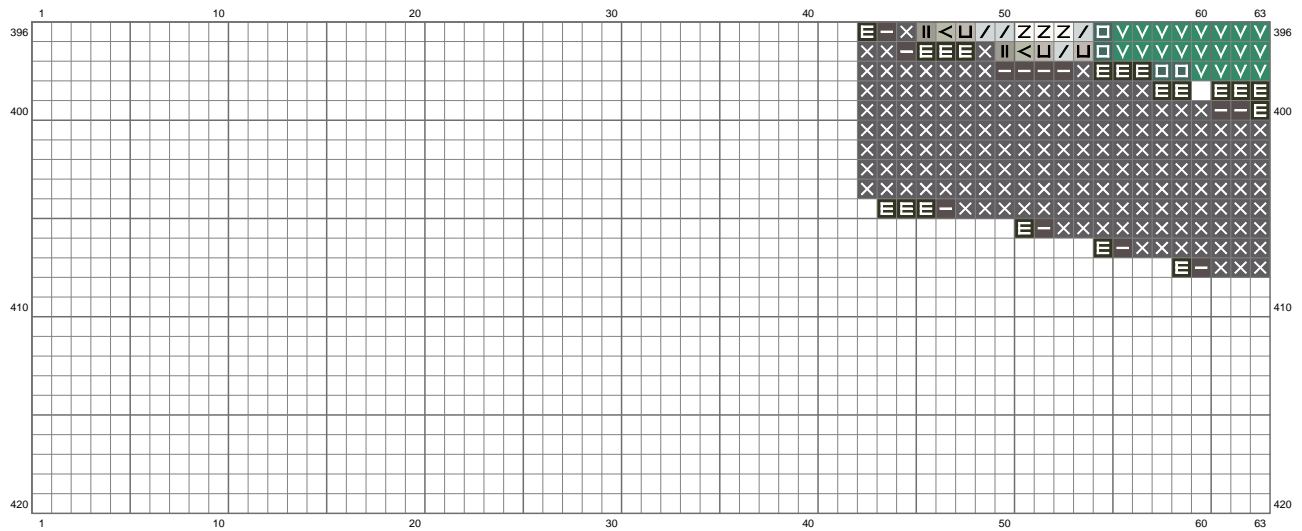
# Untitled



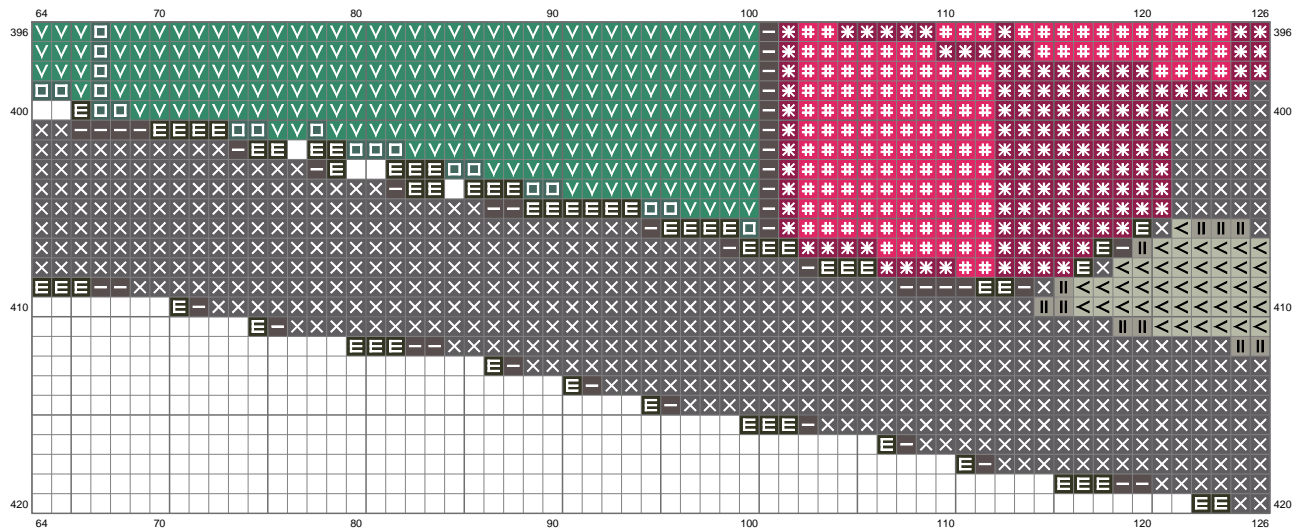
(This chart is printed using KG-Chart LE for Cross Stitch.)



# Untitled

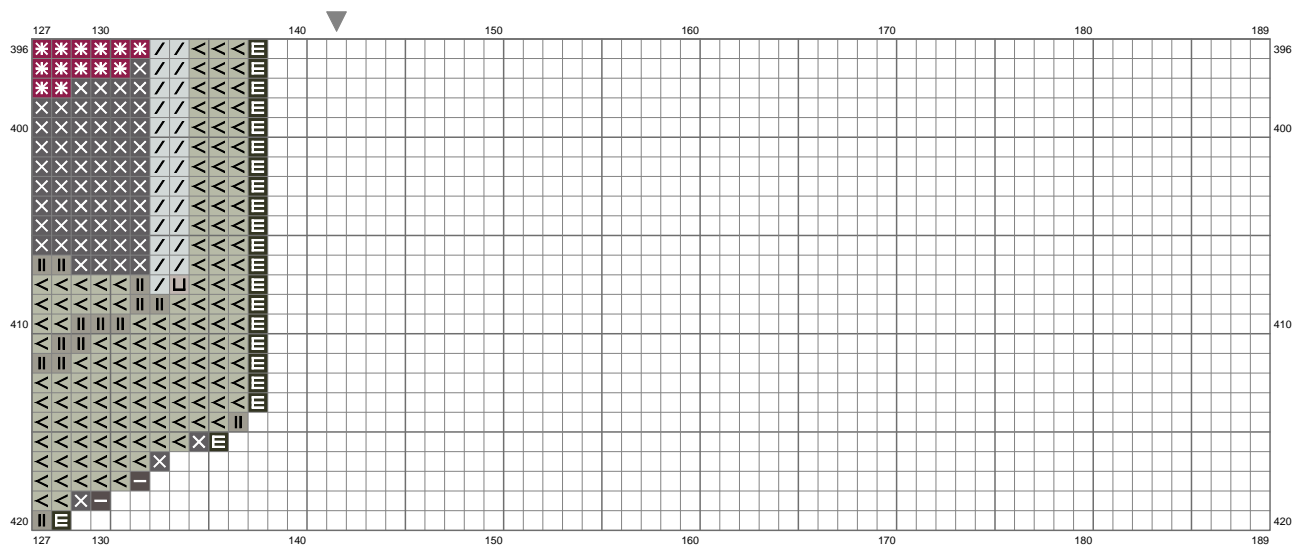


# Untitled

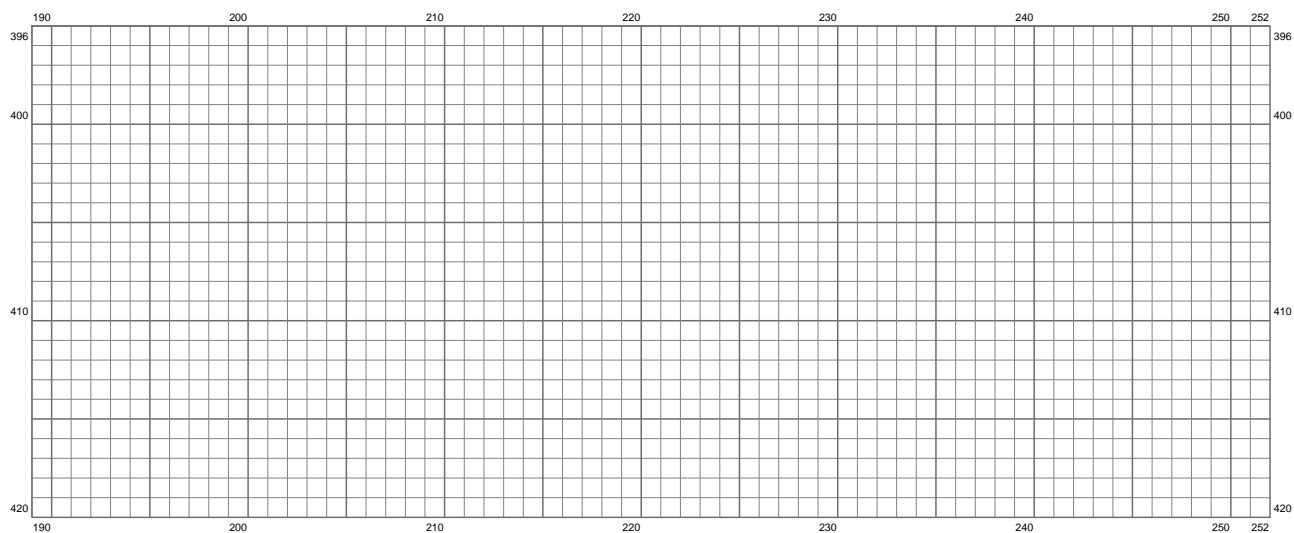


(This chart is printed using KG-Chart LE for Cross Stitch.)

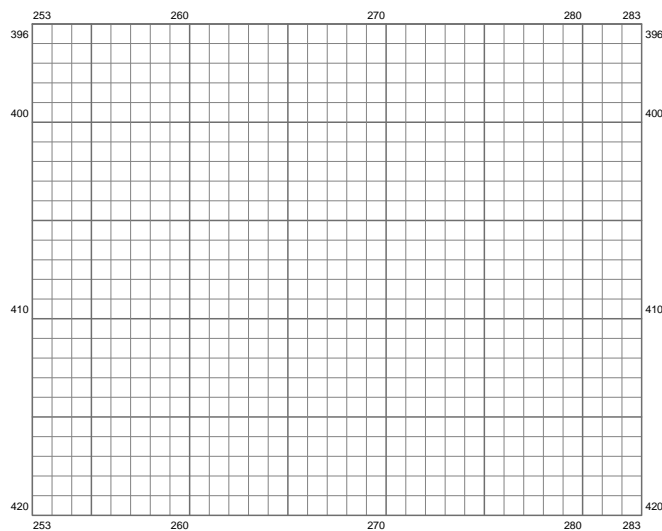
# Untitled



# Untitled



# Untitled



(This chart is printed using KG-Chart LE for Cross Stitch.)

Stitch Count: 283w x 420h

Finished Size: 51.34 cm x 76.2 cm (28 ct./inch)

Cloth: Linen

Cloth's Color: Black

# of colors: 15 Colors

## Color Table (DMC)

### Cross Stitch

	934	(1451 ct)
	501	(1269 ct)
	844	(927 ct)
	535	(15685 ct)
	3685	(2990 ct)
	315	(338 ct)
	601	(4898 ct)
	602	(175 ct)
	505	(2348 ct)
	992	(1064 ct)
	646	(1461 ct)
	523	(6872 ct)
	647	(1143 ct)
	928	(1578 ct)
	3865	(5015 ct)