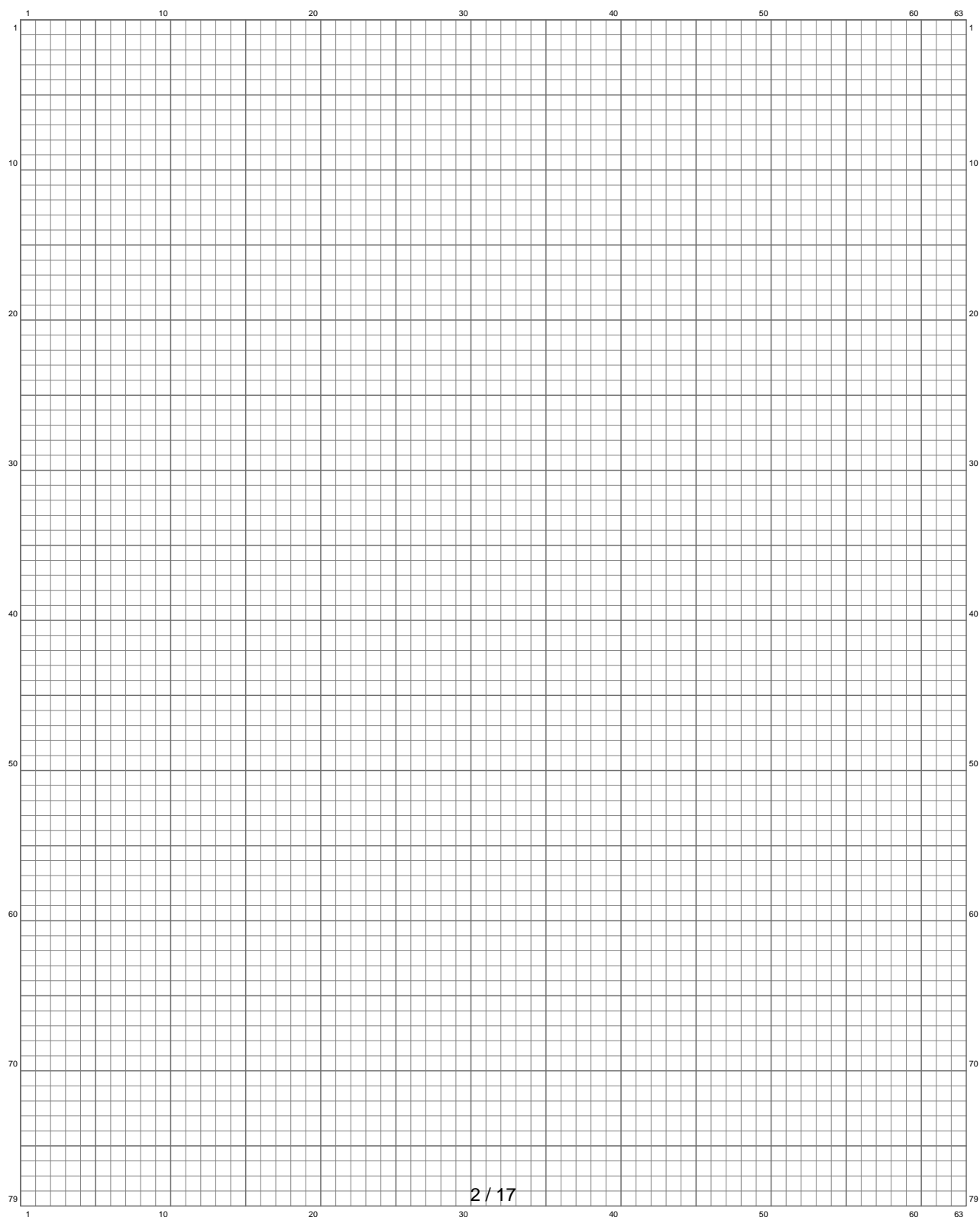


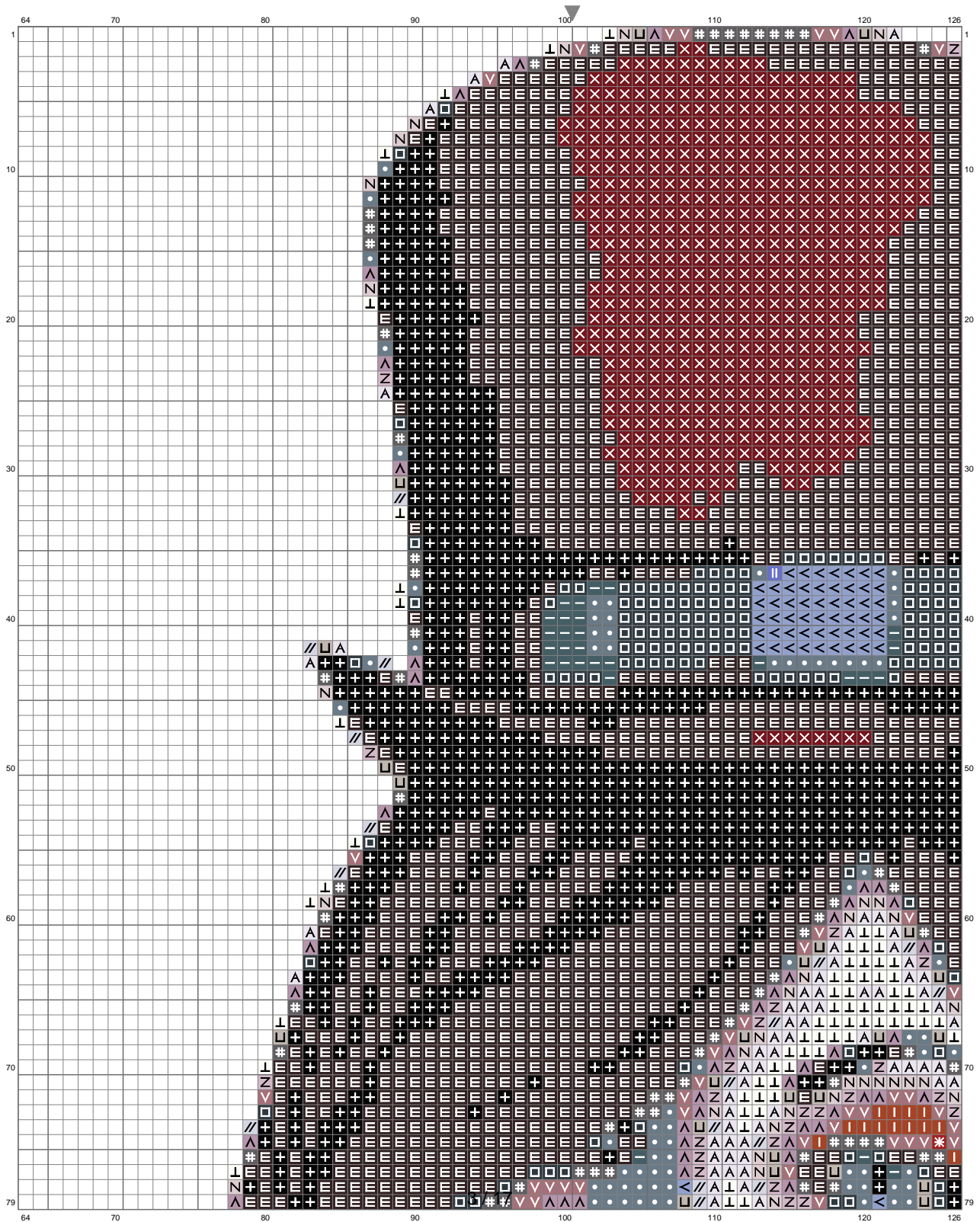
Untitled



Untitled

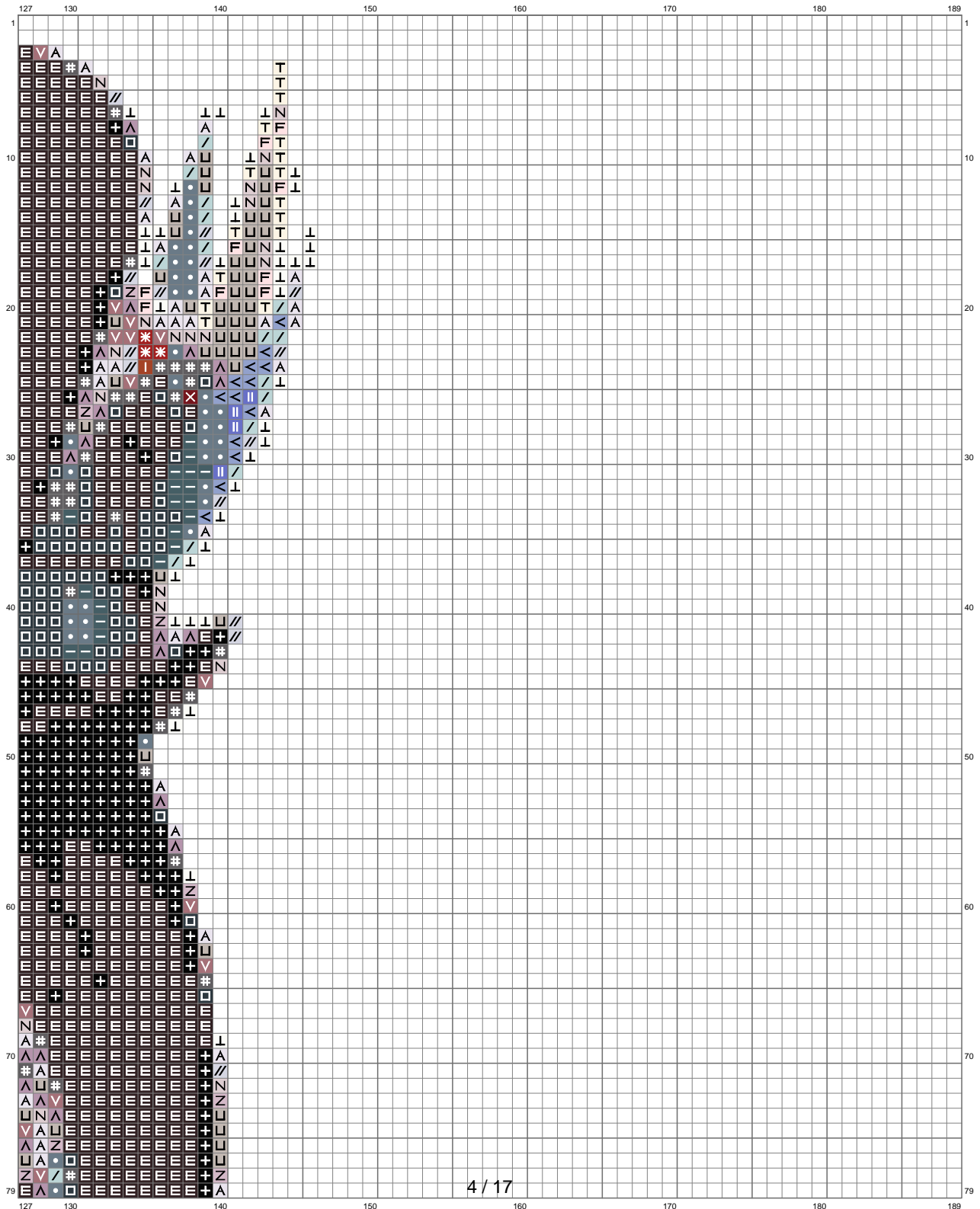


Untitled



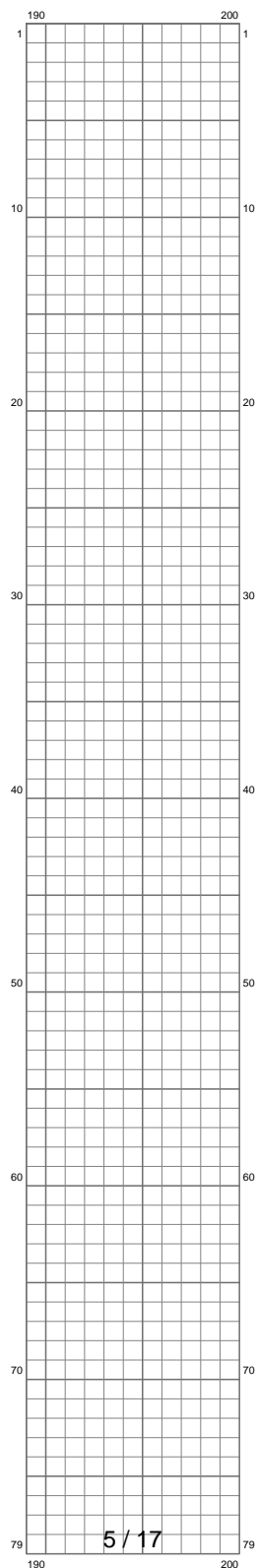
(This chart is printed using KG-Chart LE for Cross Stitch.)

Untitled



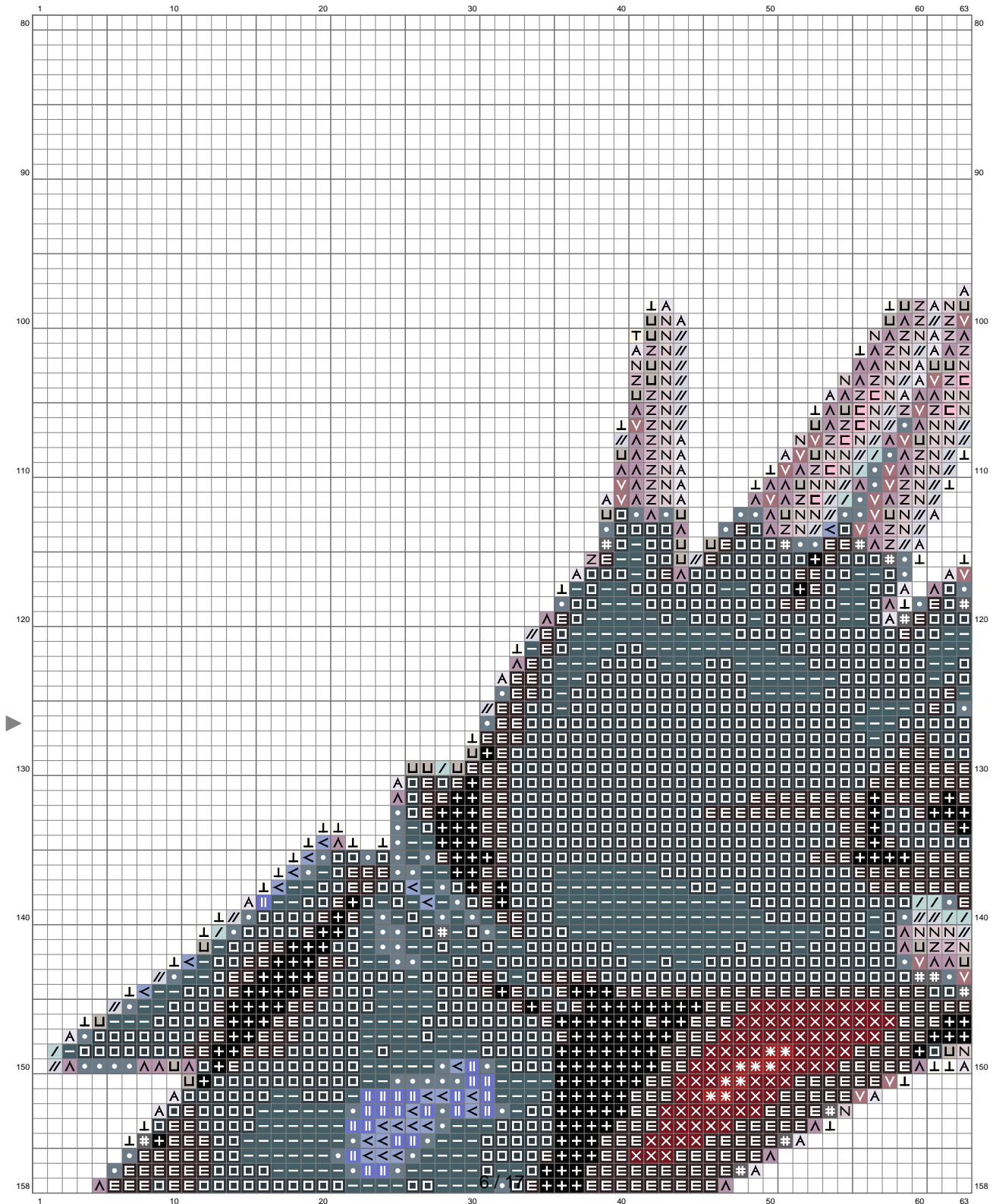
(This chart is printed using KG-Chart LE for Cross Stitch.)

Untitled



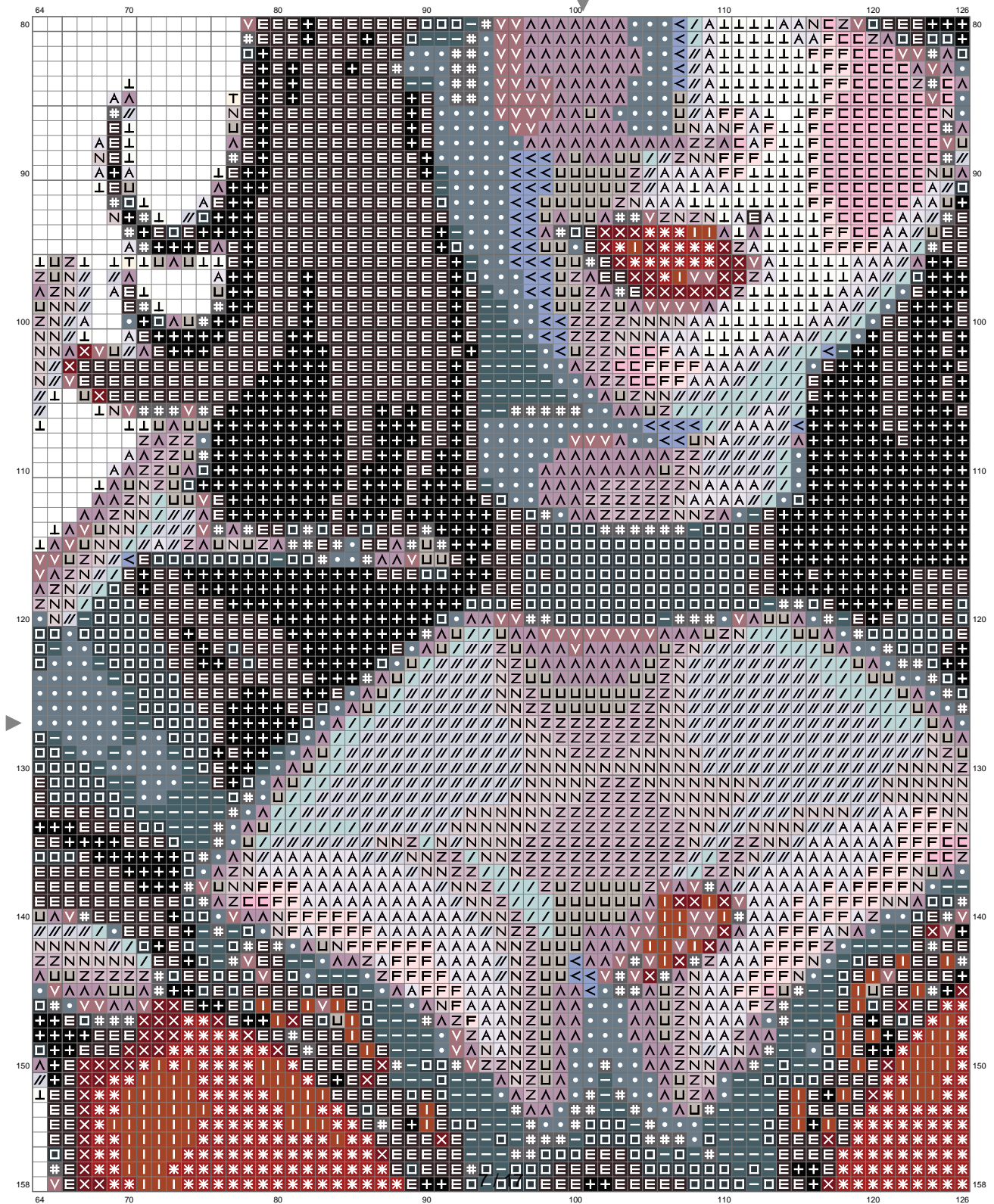
(This chart is printed using KG-Chart LE for Cross Stitch.)

Untitled



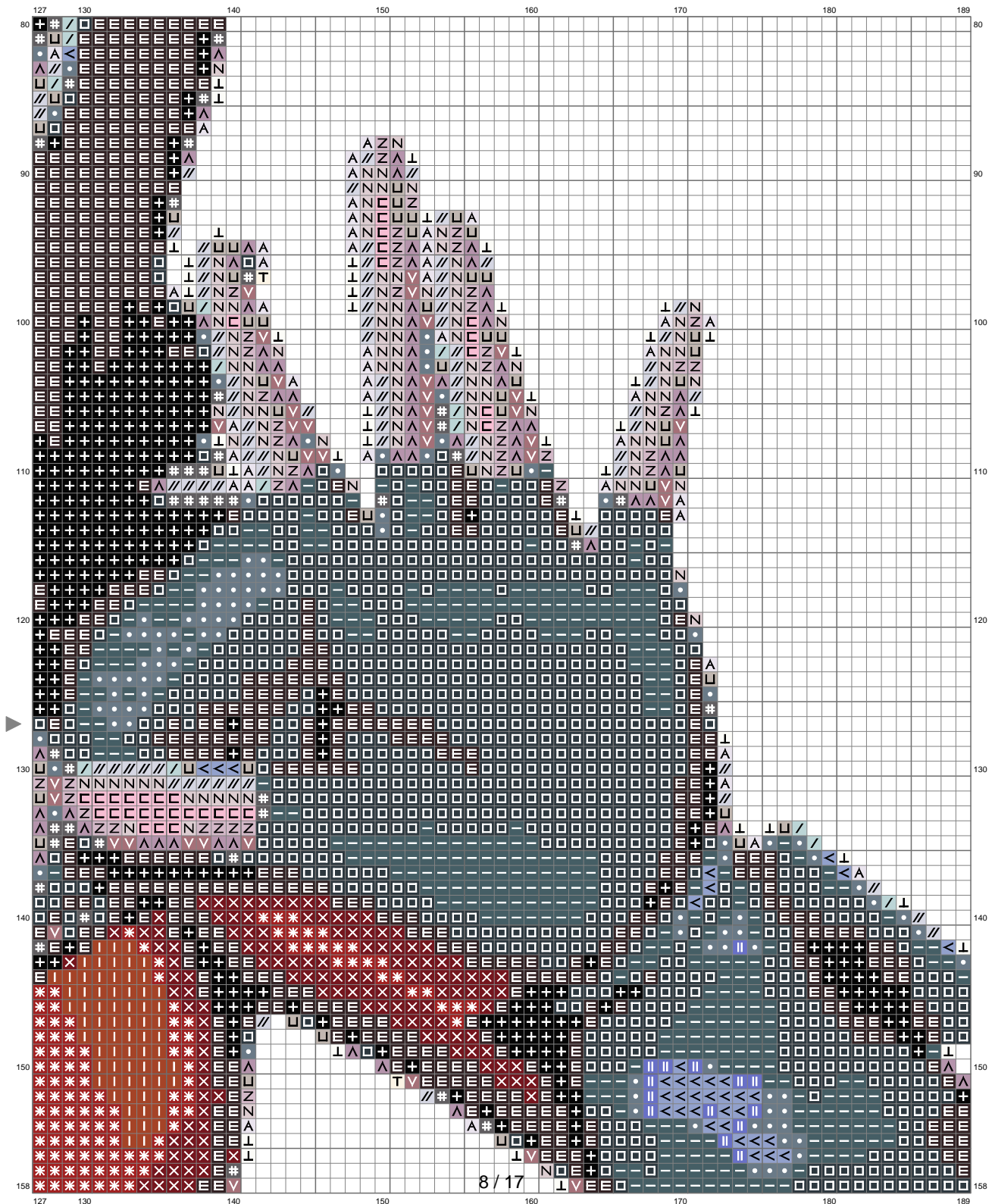
(This chart is printed using KG-Chart LE for Cross Stitch.)

Untitled



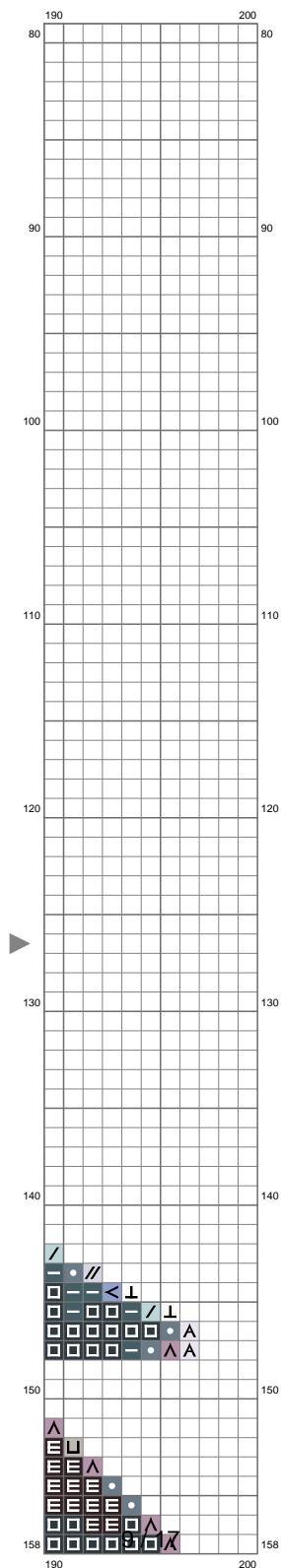
(This chart is printed using KG-Chart LE for Cross Stitch.)

Untitled



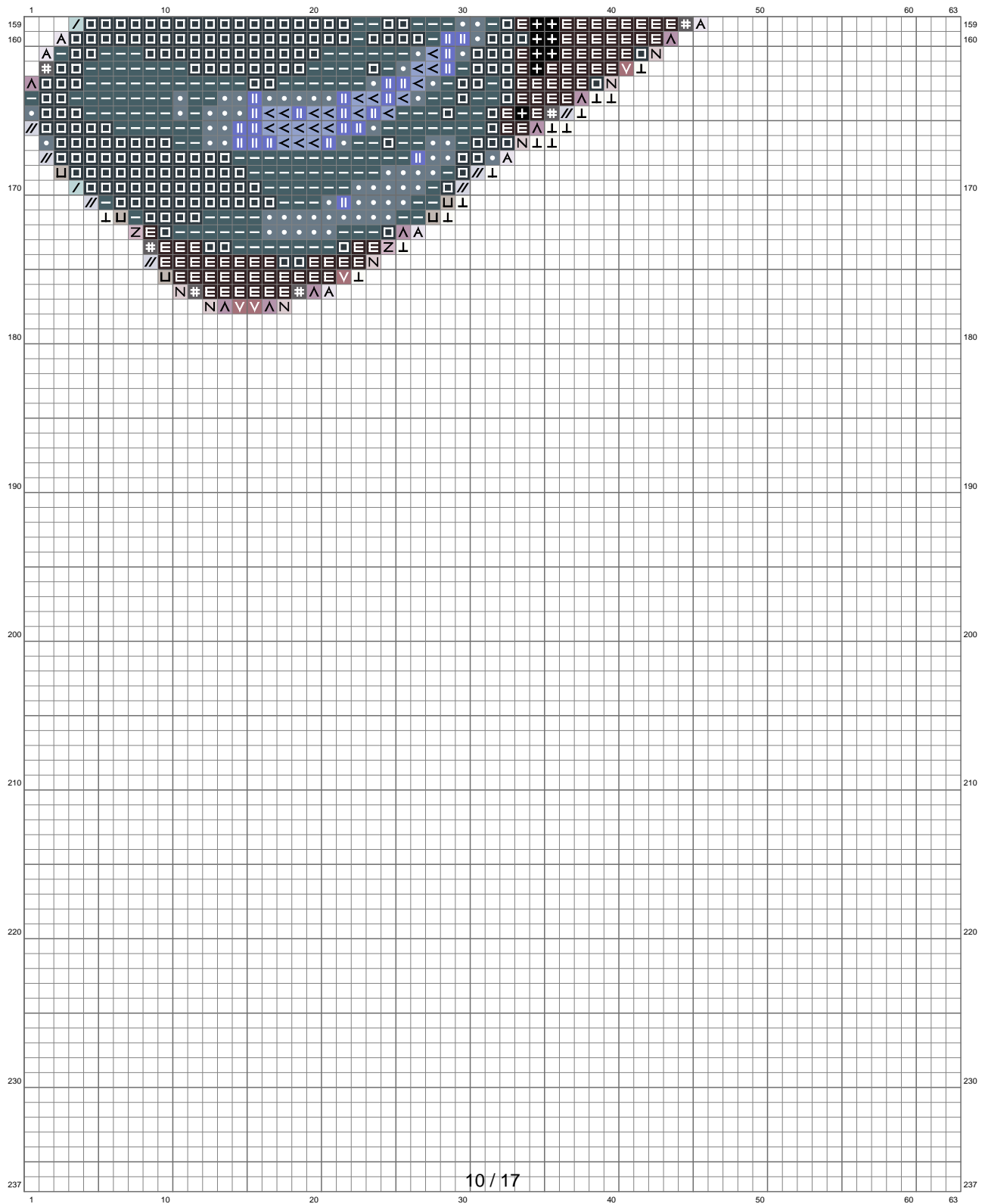
(This chart is printed using KG-Chart LE for Cross Stitch.)

Untitled

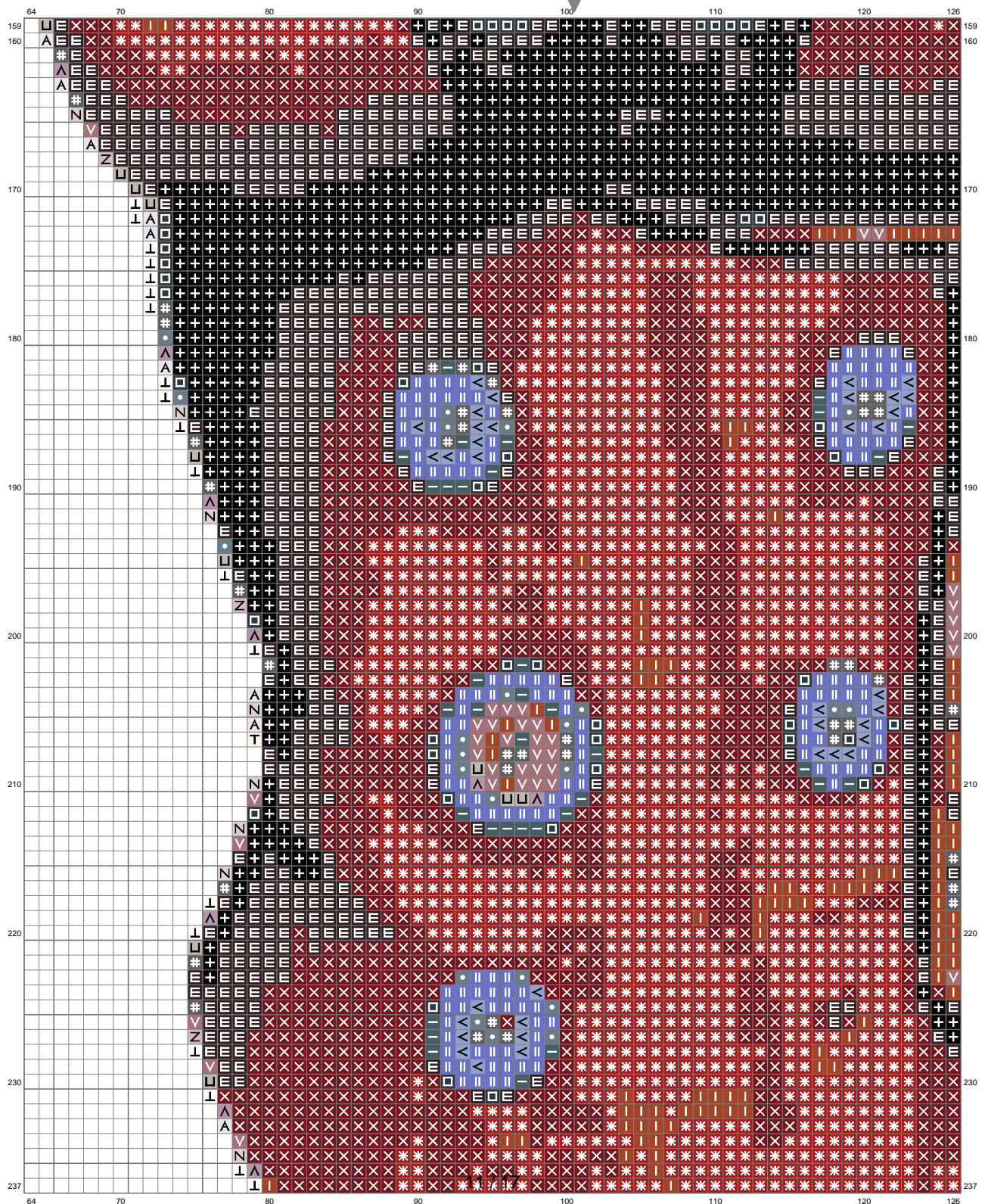


(This chart is printed using KG-Chart LE for Cross Stitch.)

Untitled

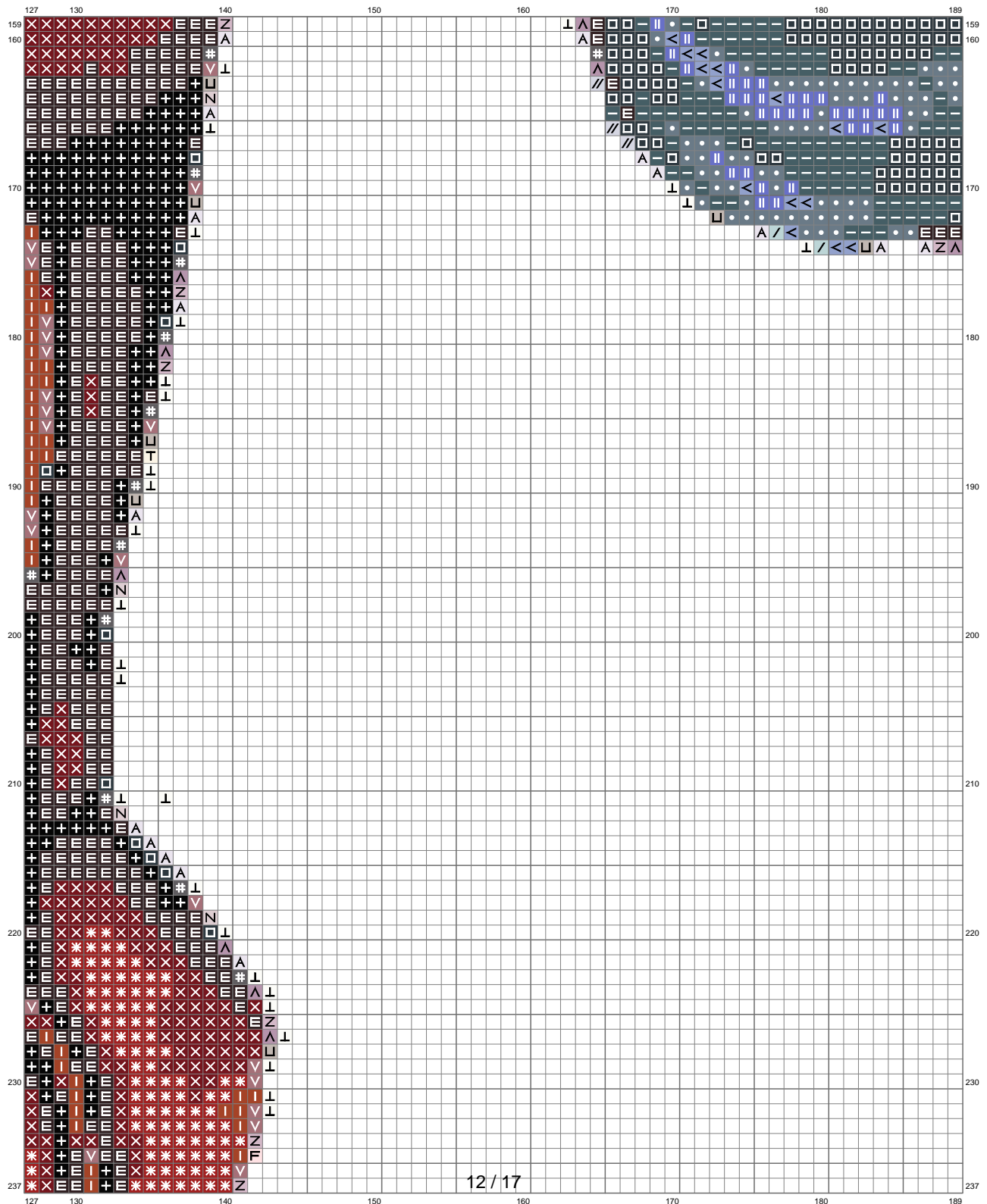


Untitled



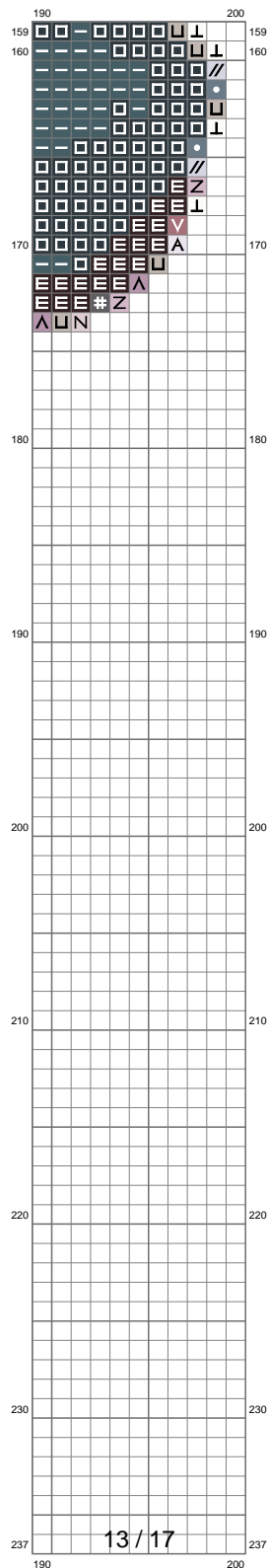
(This chart is printed using KG-Chart LE for Cross Stitch.)

Untitled



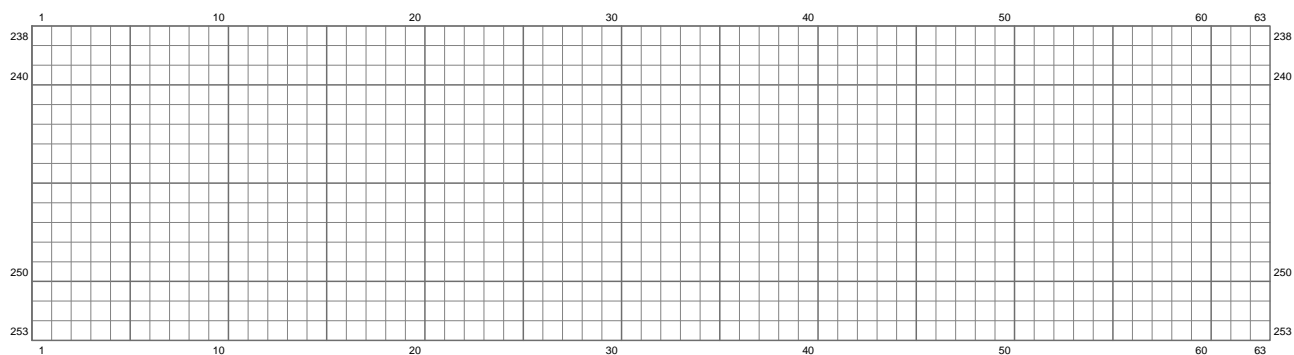
(This chart is printed using KG-Chart LE for Cross Stitch.)

Untitled



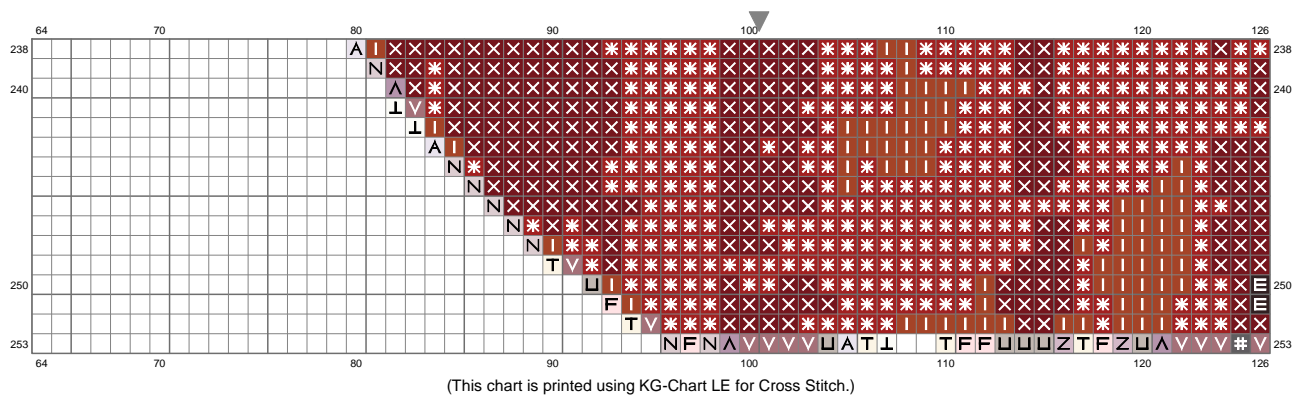
(This chart is printed using KG-Chart LE for Cross Stitch.)

Untitled

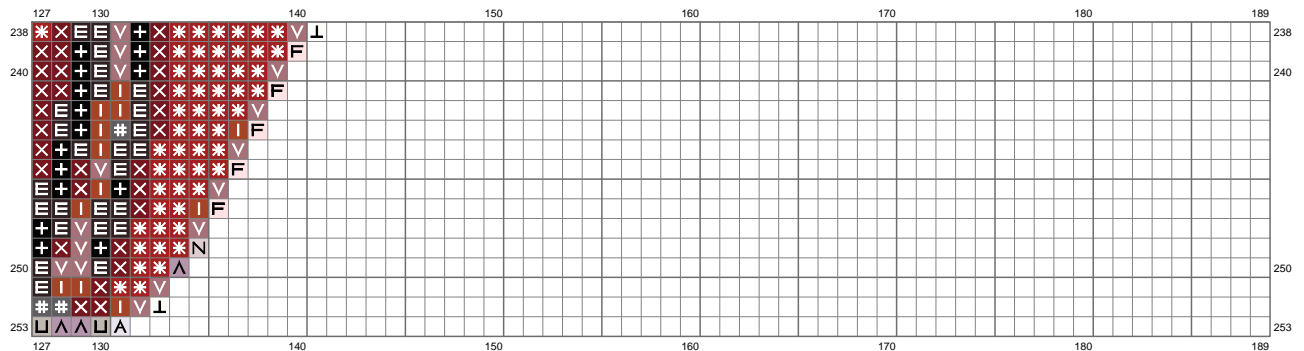


(This chart is printed using KG-Chart LE for Cross Stitch.)

Untitled

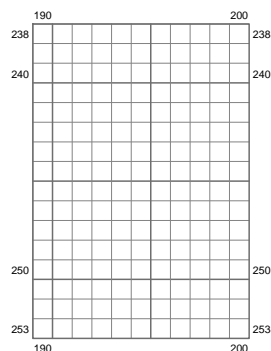


Untitled



(This chart is printed using KG-Chart LE for Cross Stitch.)

Untitled



(This chart is printed using KG-Chart LE for Cross Stitch.)

Stitch Count: 200w x 253h
Finished Size: 72.57 cm x 91.80 cm (14 ct./inch)
Cloth: Aida
Cloth's Color: Light Pink
of colors: 23 Colors

Color Table (DMC)

Cross Stitch

	310	(2787 ct)
	939	(4403 ct)
	500	(2521 ct)
	924	(1259 ct)
	815	(2297 ct)
	3777	(2035 ct)
	918	(420 ct)
	535	(359 ct)
	3768	(756 ct)
	3860	(297 ct)
	451	(509 ct)
	798	(249 ct)
	799	(248 ct)
	647	(369 ct)
	3752	(156 ct)
	452	(354 ct)
	453	(489 ct)
	415	(505 ct)
	762	(450 ct)
	3689	(132 ct)
	819	(139 ct)
	3866	(172 ct)
	BLANC	(396 ct)