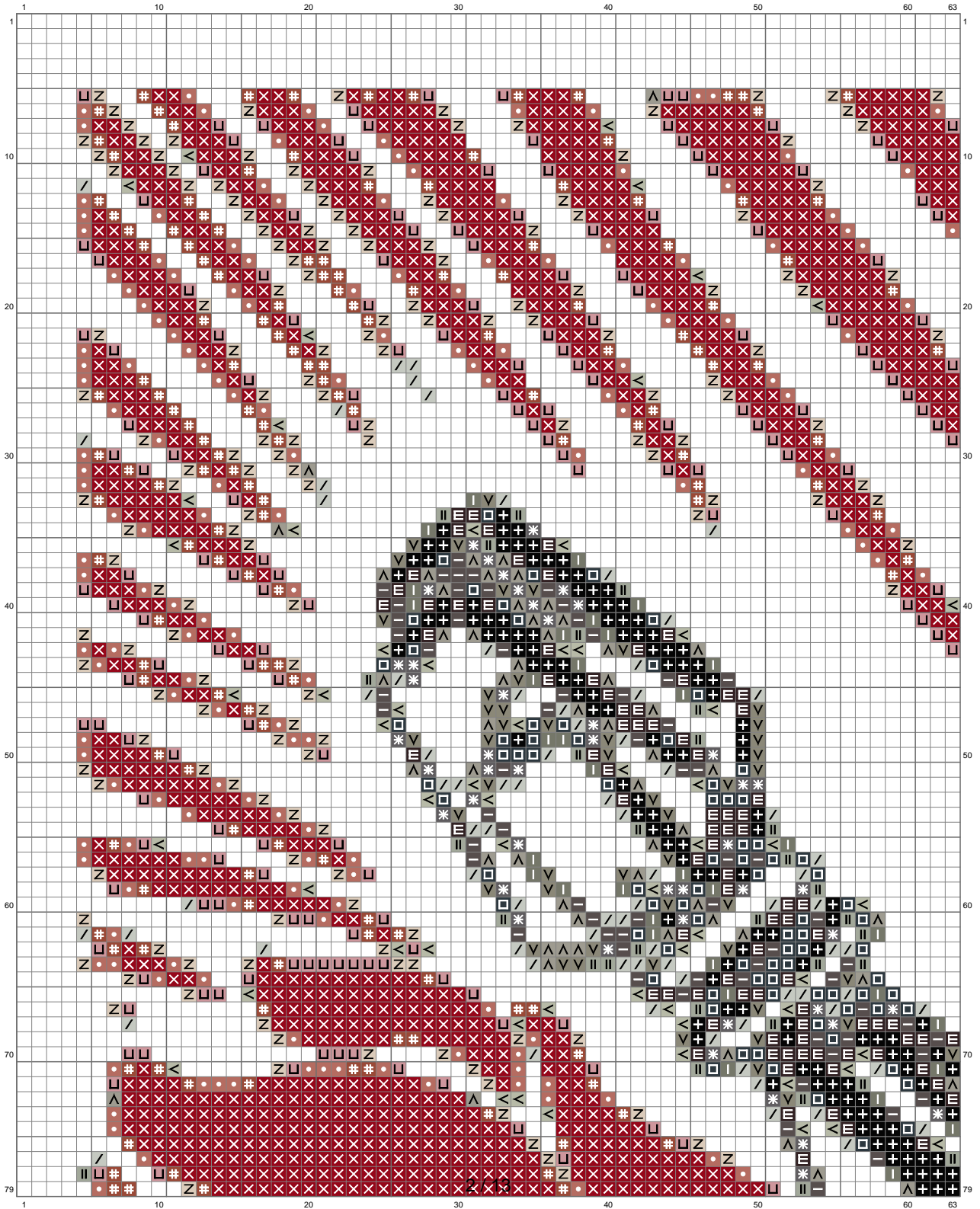


Untitled

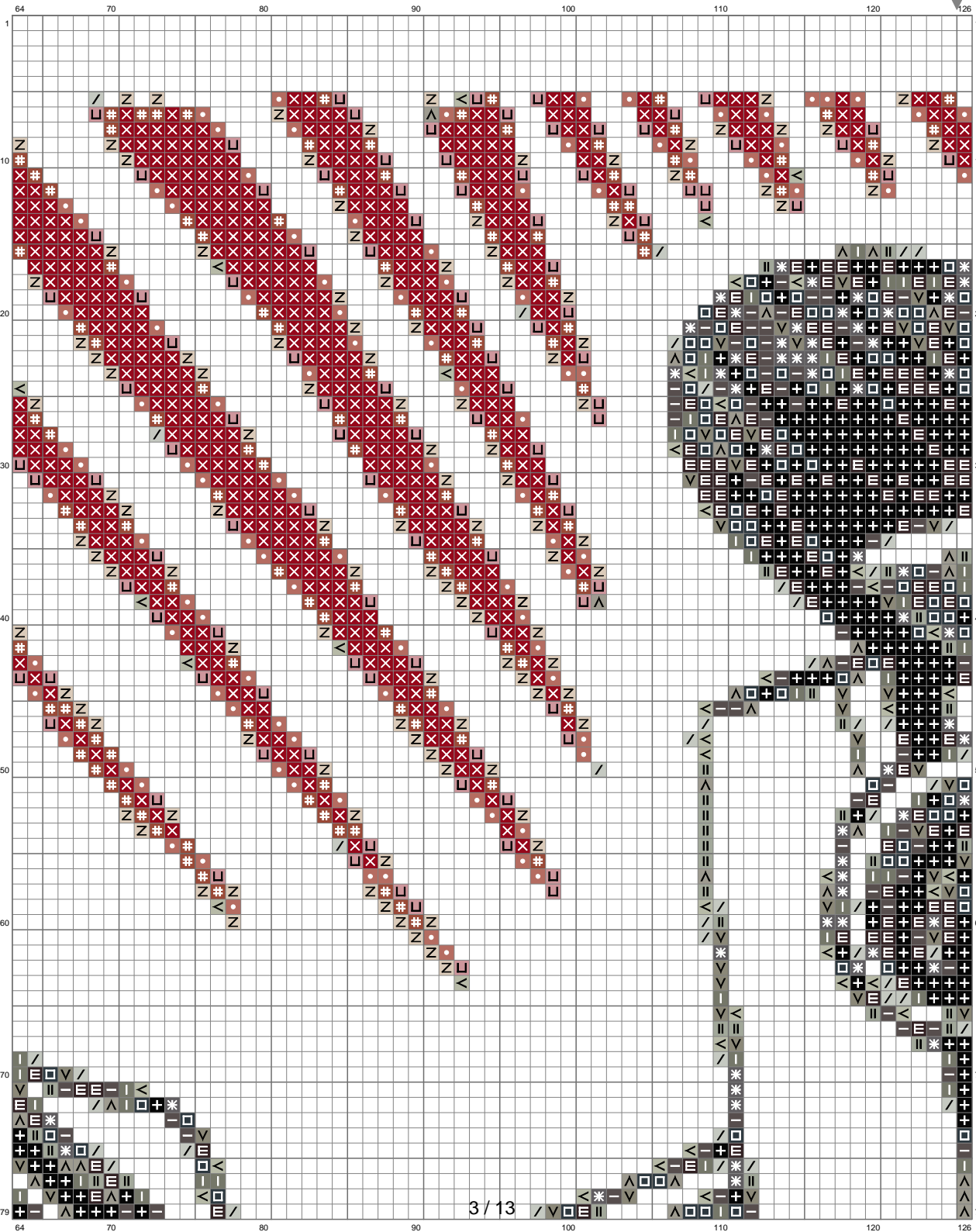


# Untitled



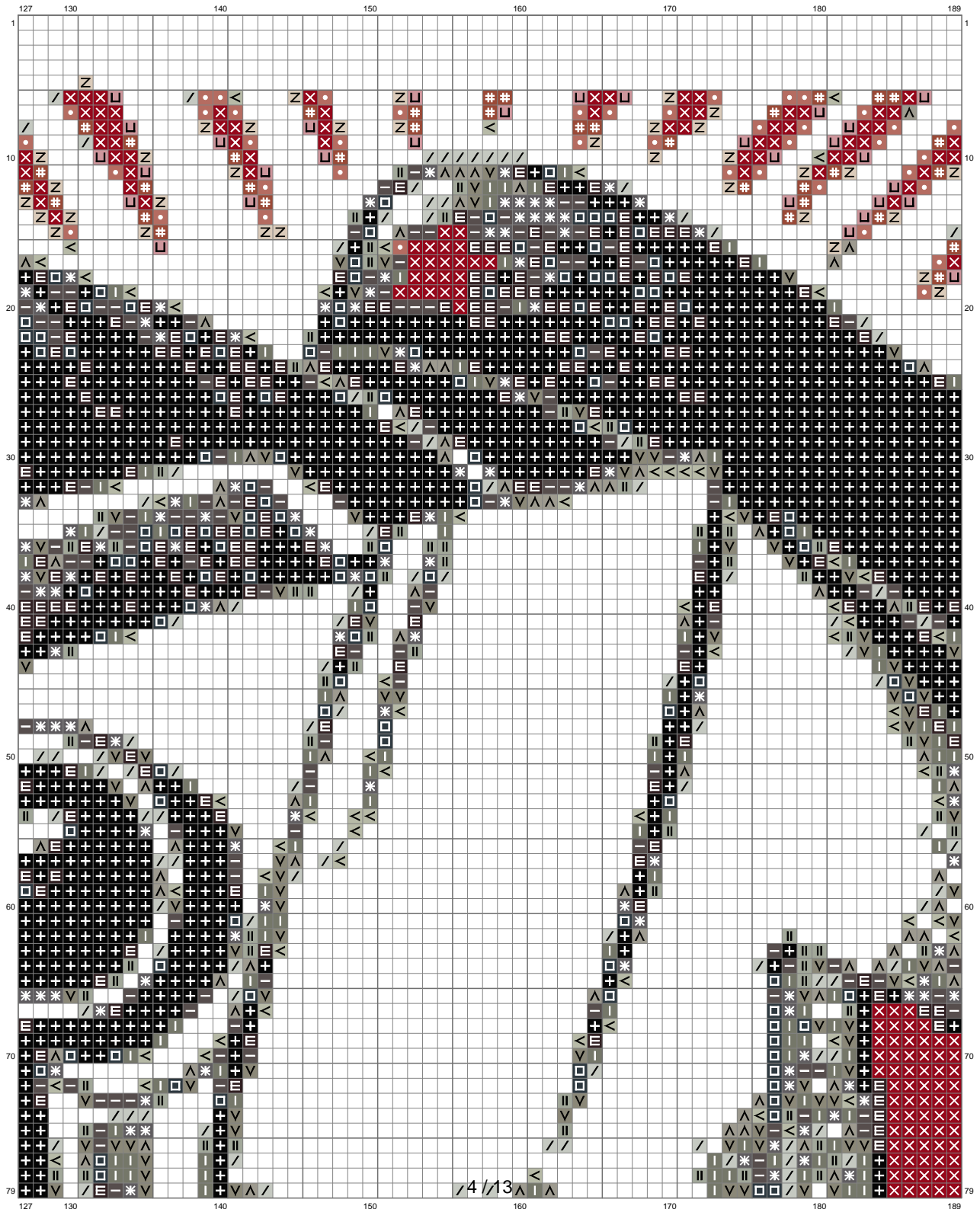
(This chart is printed using KG-Chart LE for Cross Stitch.)

# Untitled



(This chart is printed using KG-Chart LE for Cross Stitch.)

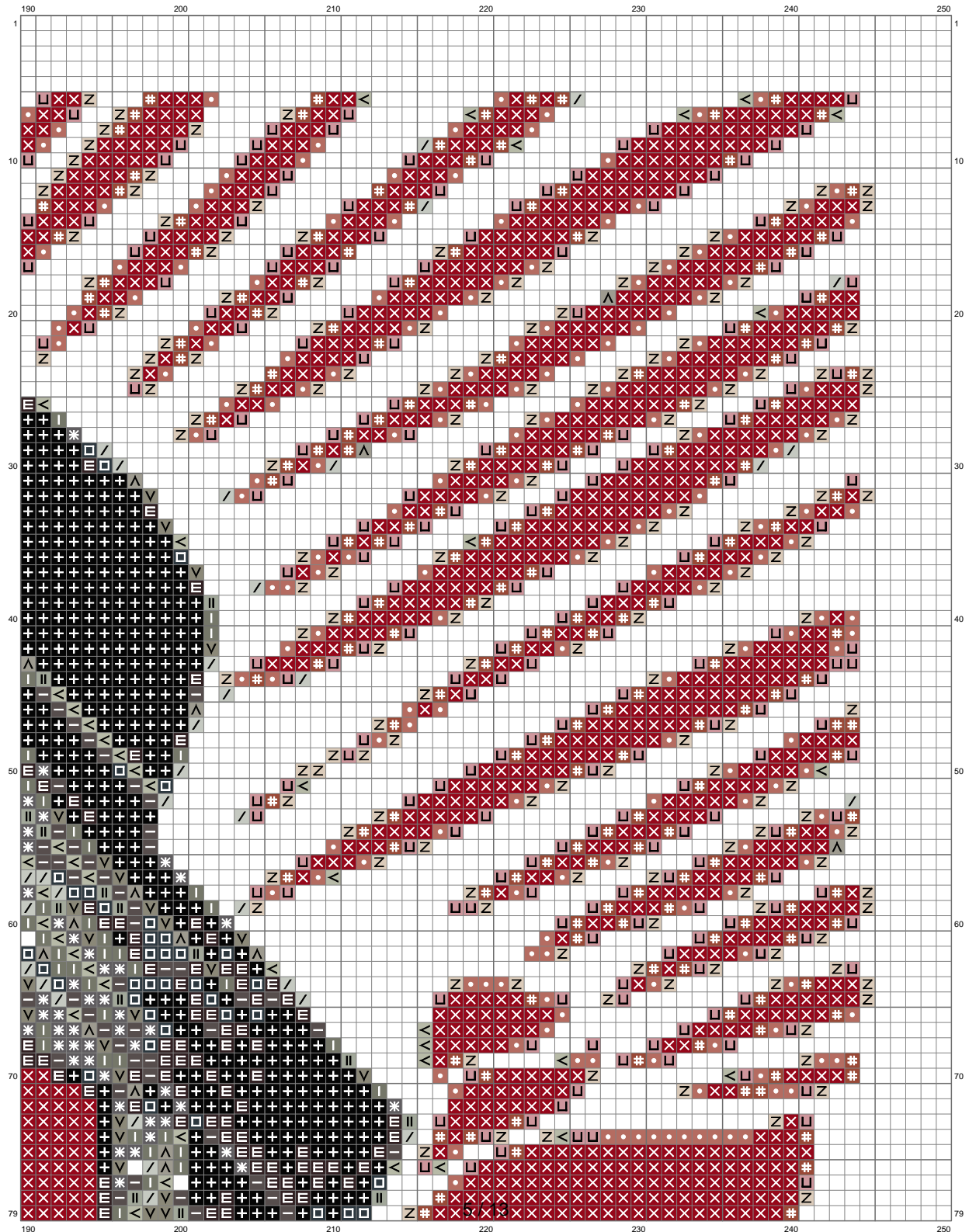
# Untitled



(This chart is printed using KG-Chart LE for Cross Stitch.)



# Untitled



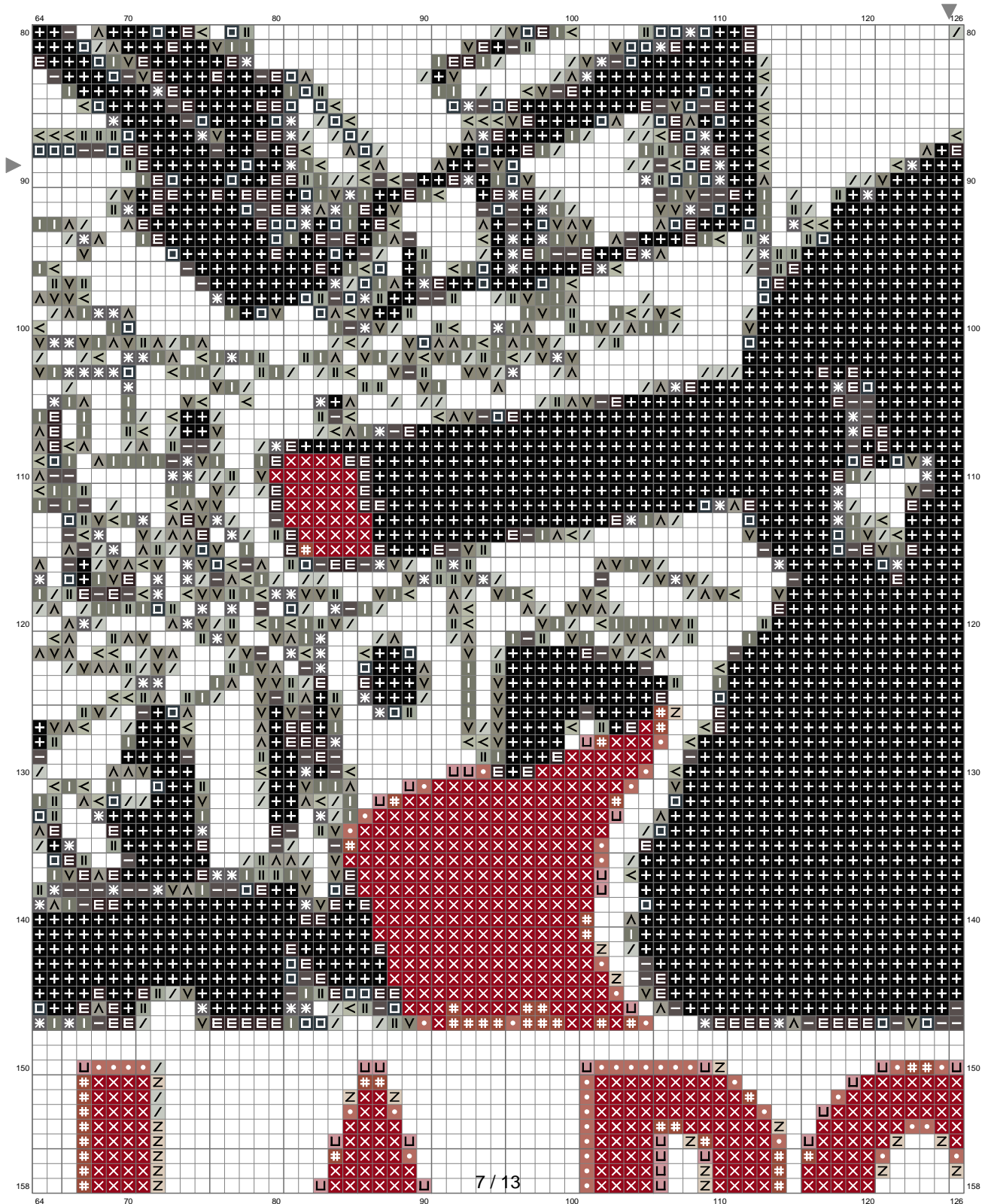
(This chart is printed using KG-Chart LE for Cross Stitch.)

# Untitled



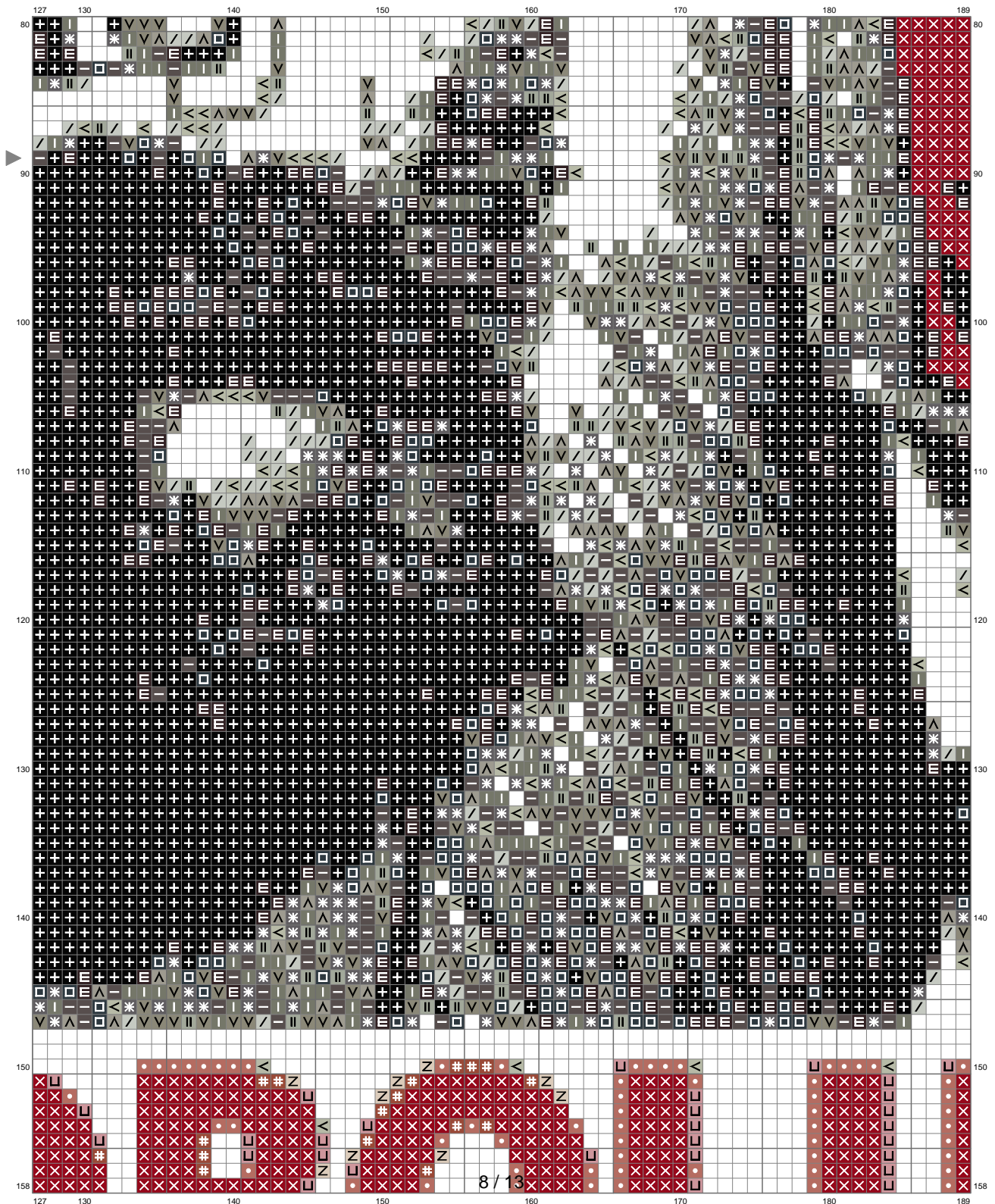
(This chart is printed using KG-Chart LE for Cross Stitch

# Untitled



(This chart is printed using KG-Chart LE for Cross Stitch.)

# Untitled



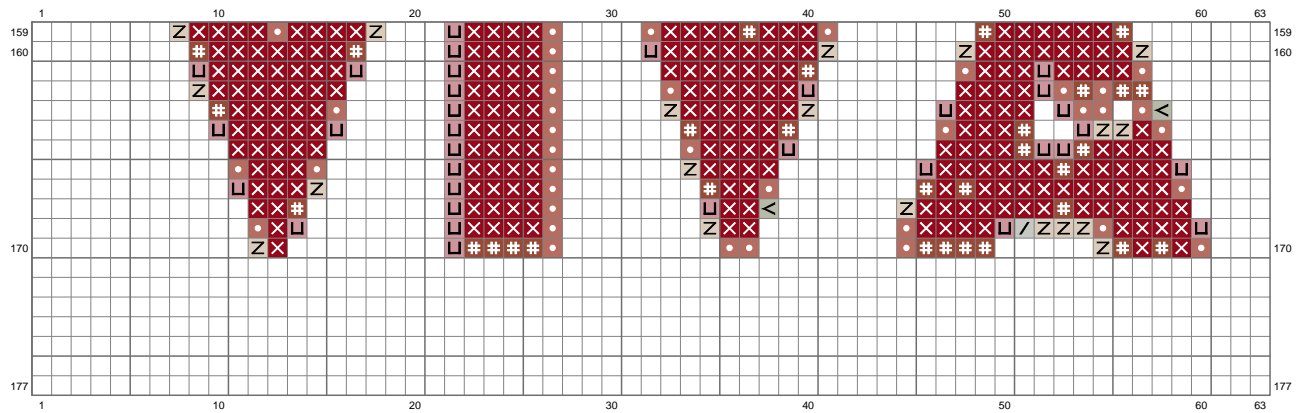


# Untitled

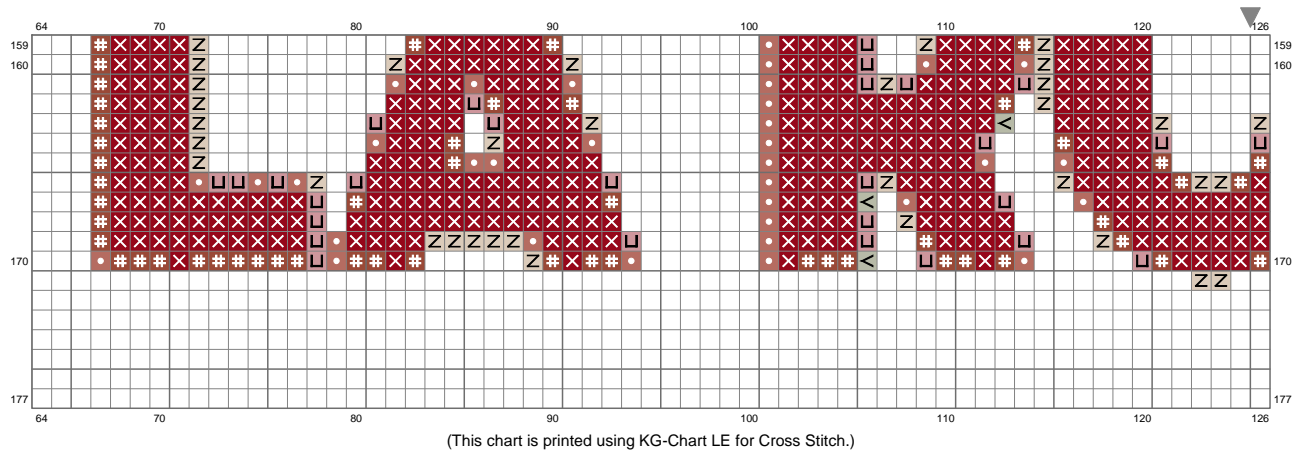


(This chart is printed using KG-Chart LE for Cross Stitch.)

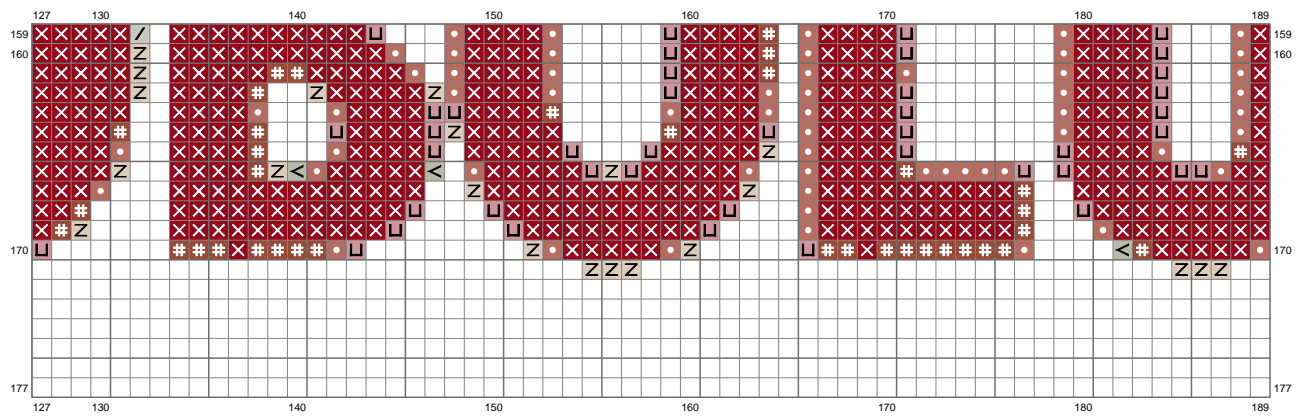
# Untitled



# Untitled



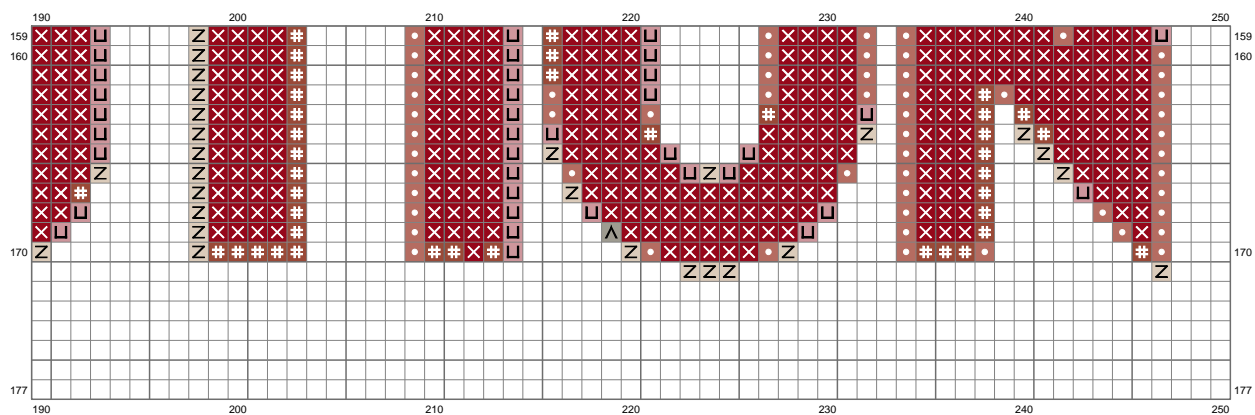
# Untitled



(This chart is printed using KG-Chart LE for Cross Stitch.)



# Untitled



Stitch Count: 250w x 177h

Finished Size: 90.71 cm x 64.22 cm (14 ct./inch)

Cloth: Aida

Cloth's Color: White

# of colors: 16 Colors

## Color Table (DMC)

### Cross Stitch

	310	(5995 ct)
	939	(1230 ct)
	500	(852 ct)
	844	(836 ct)
	498	(6987 ct)
	535	(813 ct)
	3787	(834 ct)
	780	(875 ct)
	632	(1040 ct)
	640	(794 ct)
	646	(569 ct)
	3022	(493 ct)
	523	(641 ct)
	223	(905 ct)
	3023	(789 ct)
	613	(759 ct)