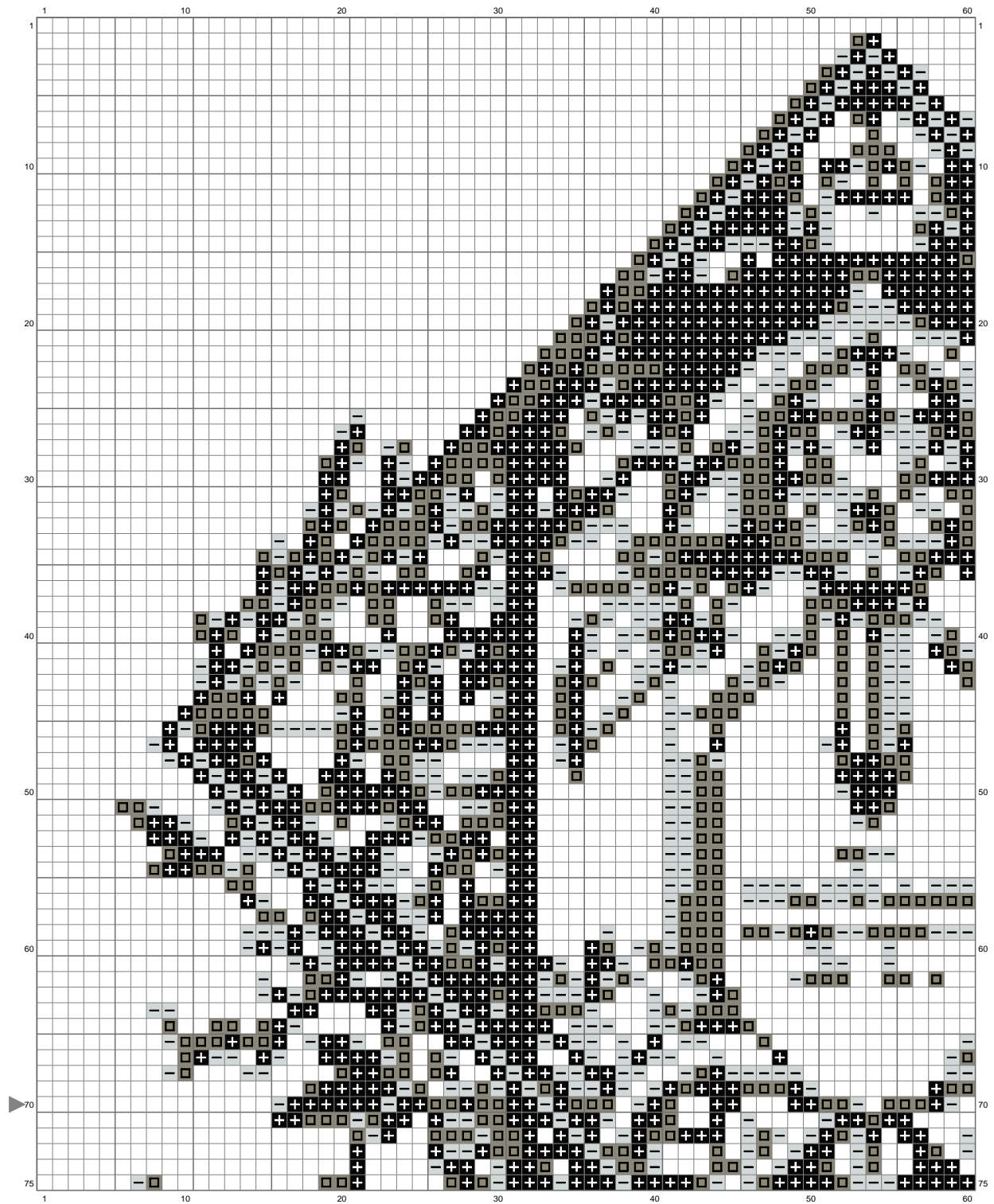
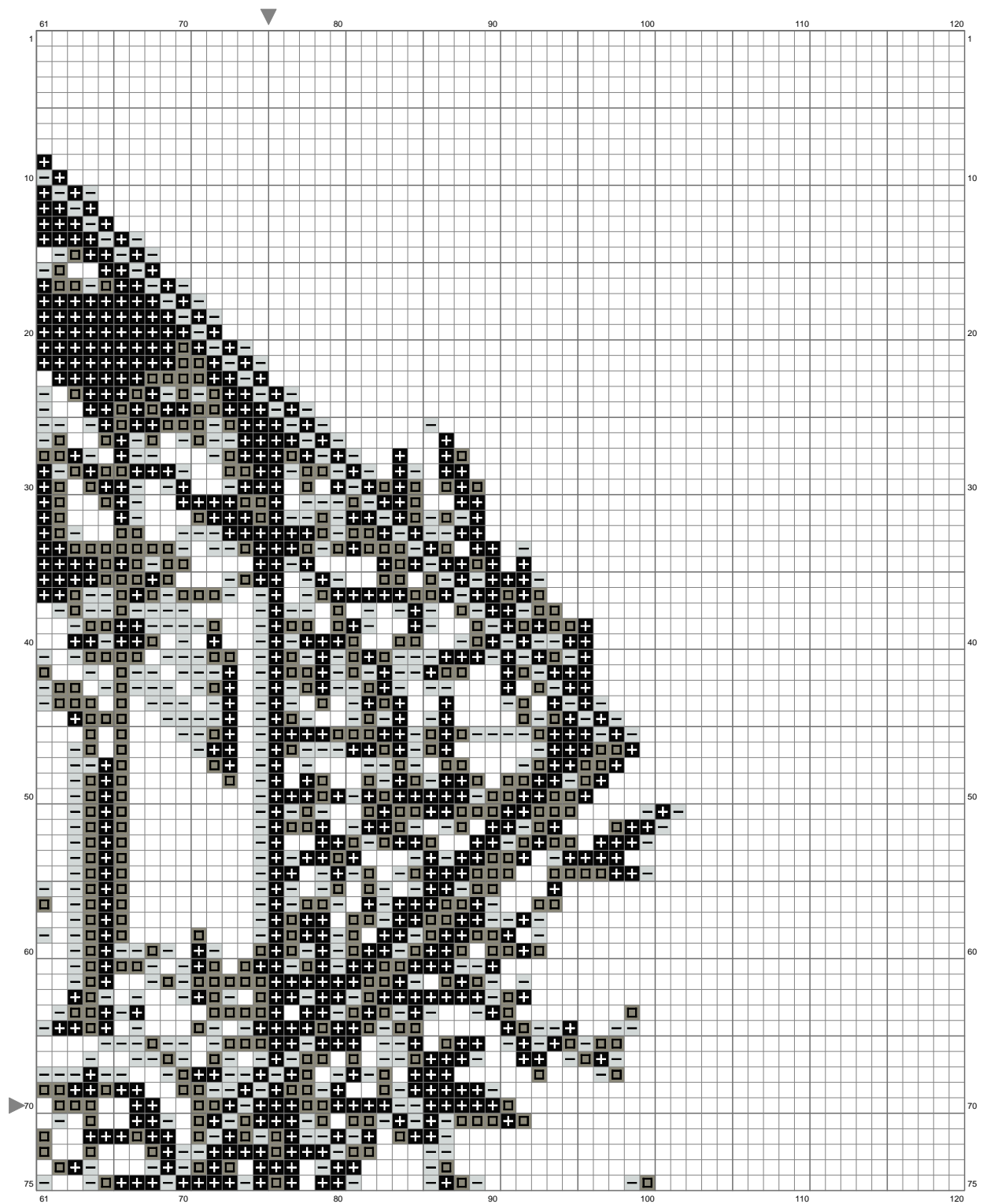


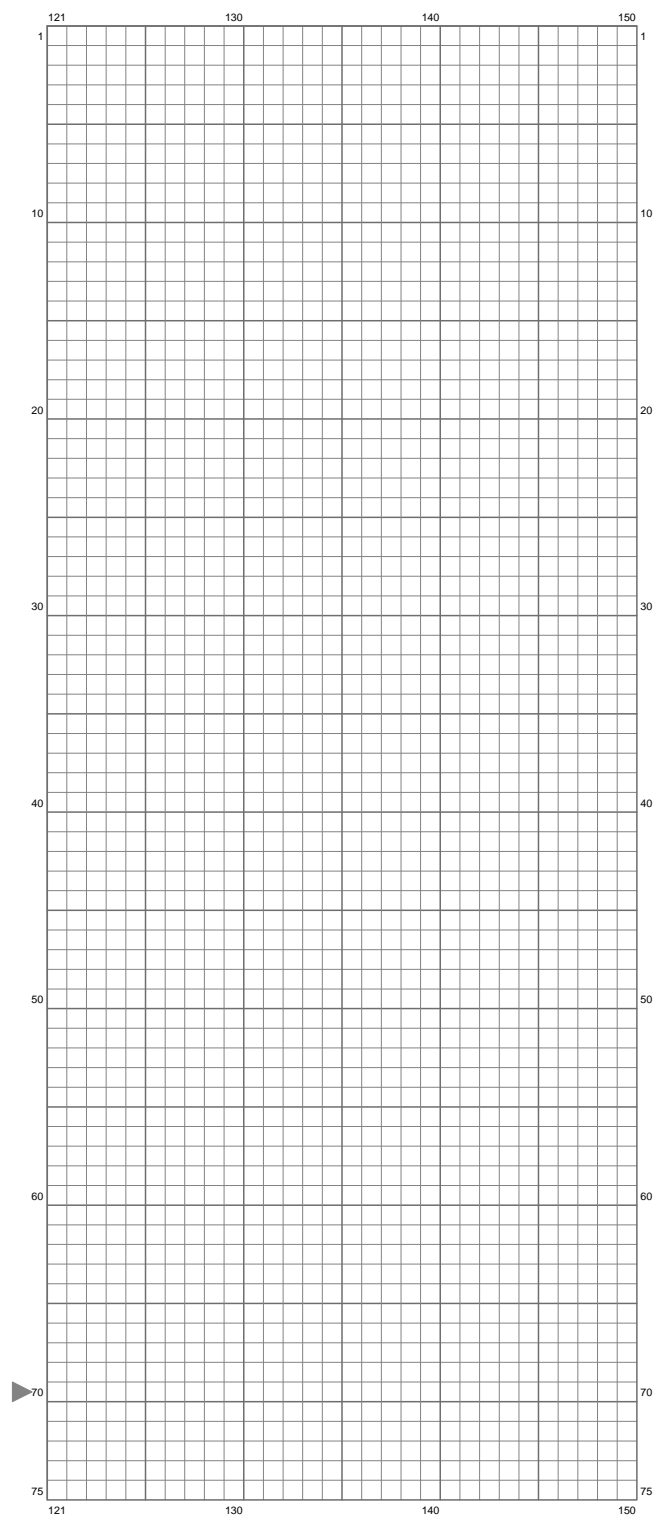
Untitled



Untitled

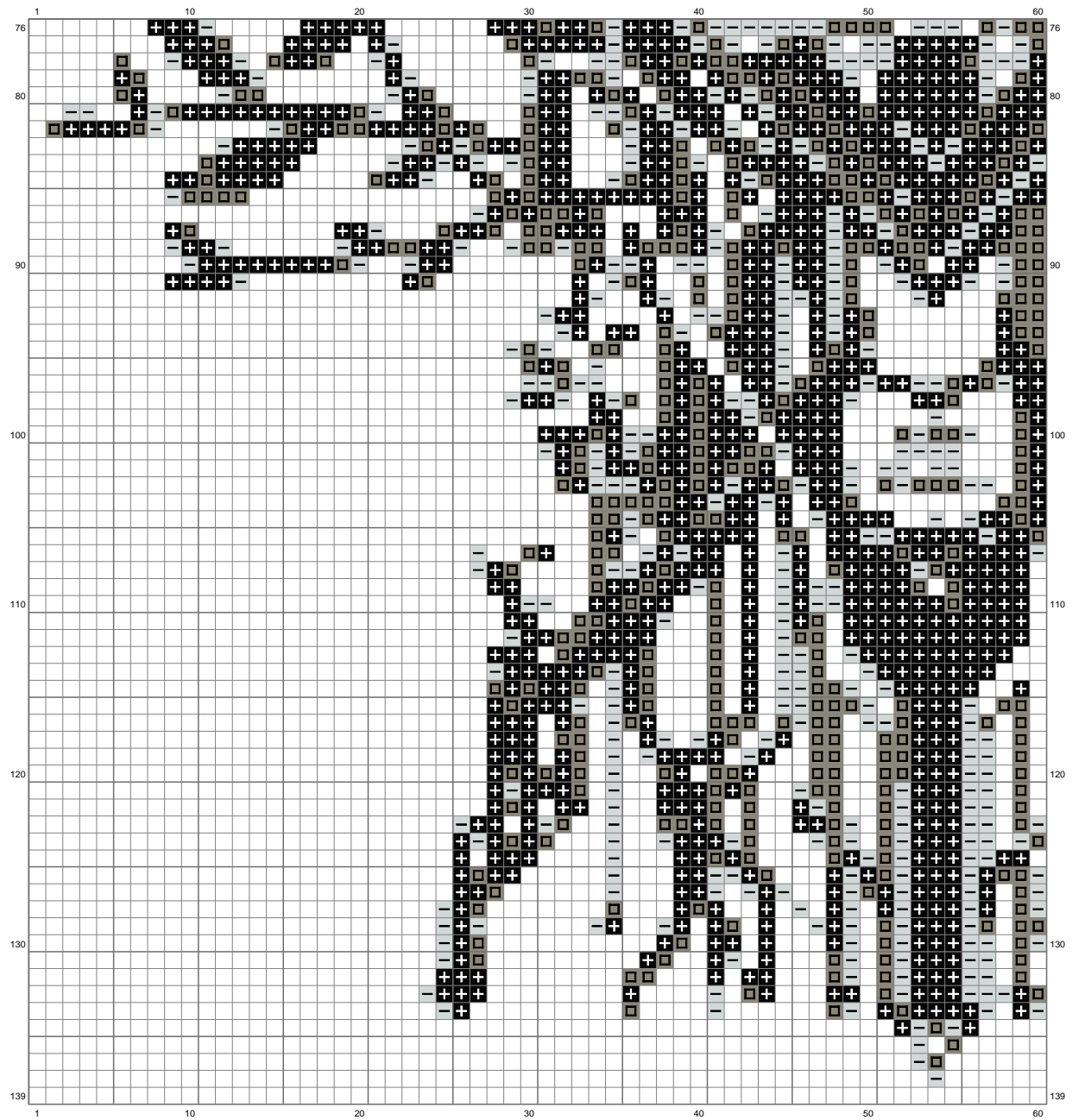


Untitled



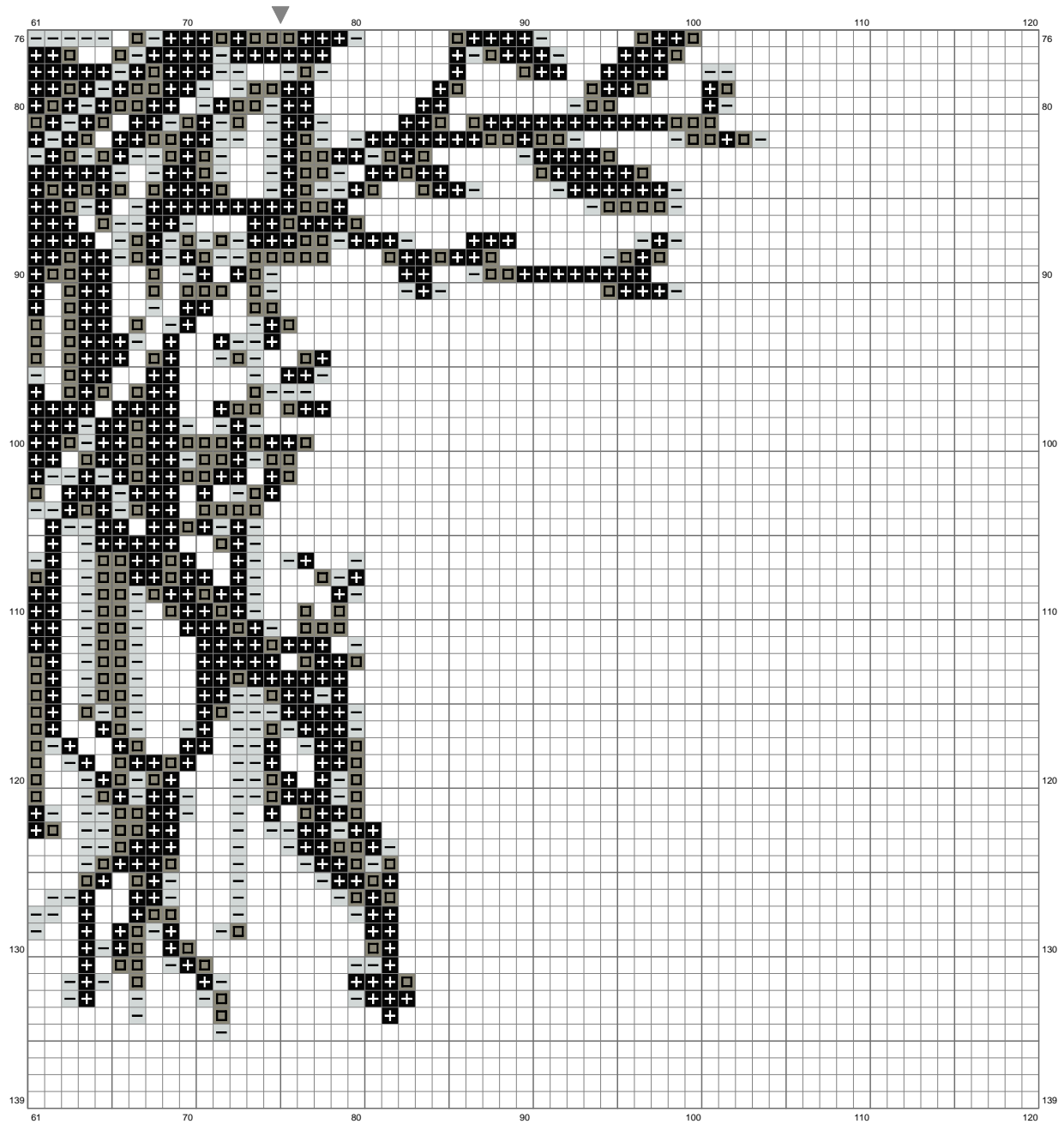
(This chart is printed using KG-Chart LE for Cross Stitch.)

Untitled



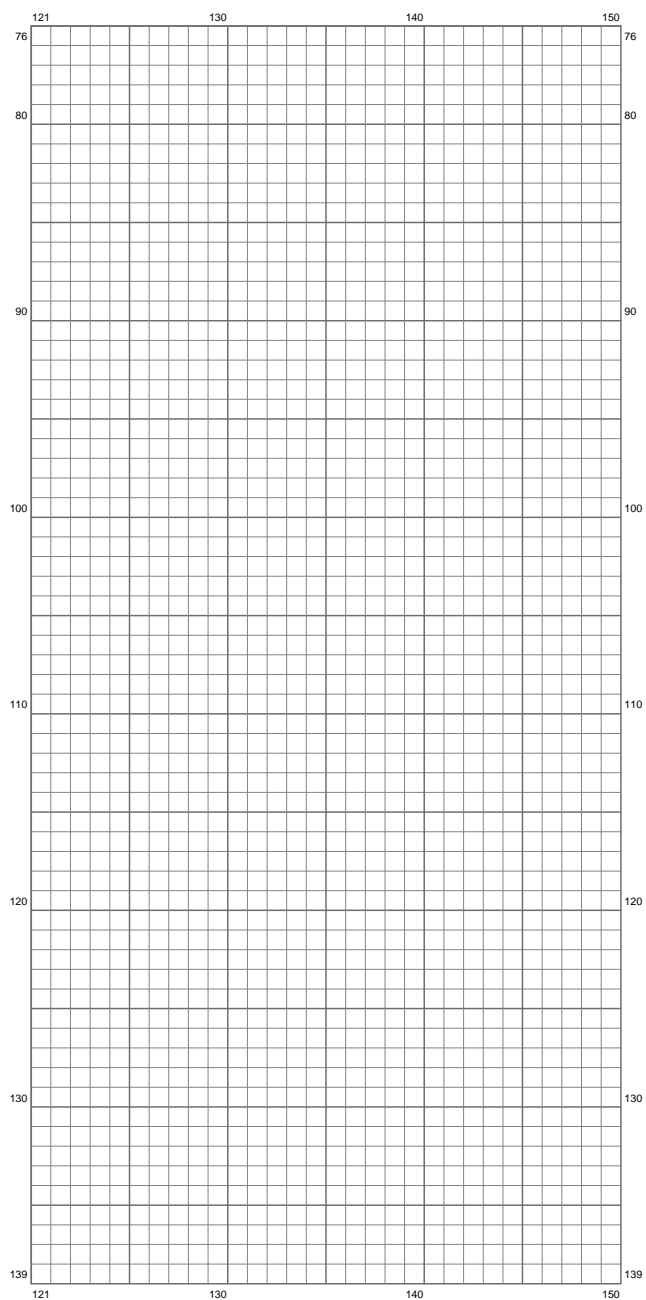
(This chart is printed using KG-Chart LE for Cross Stitch.)

Untitled



(This chart is printed using KG-Chart LE for Cross Stitch.)

Untitled



(This chart is printed using KG-Chart LE for Cross Stitch.)

Untitled

Stitch Count: 150w x 139h

Finished Size: 27.21 cm x 25.21 cm (28 ct./inch)




Cloth: Aida

Cloth's Color: White

of colors: 3 Colors

Color Table (DMC)

Cross Stitch

| | | |
|---|-----|-----------|
|  | 310 | (2734 ct) |
|  | 640 | (1614 ct) |
|  | 928 | (1545 ct) |