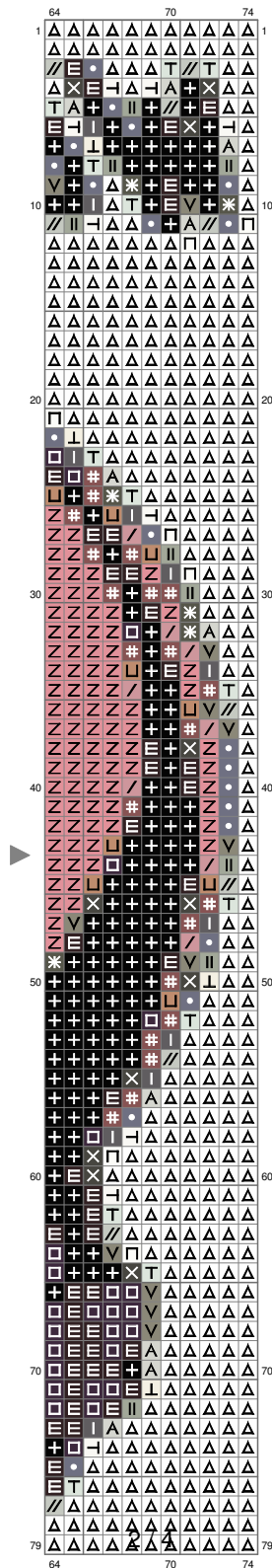


Untitled



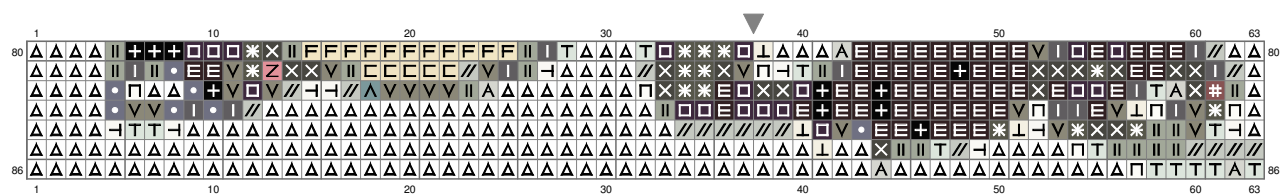
(This chart is printed using KG-Chart LE for Cross Stitch.)

Untitled



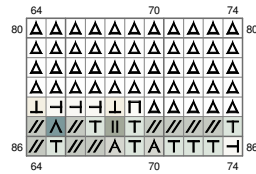
(This chart is printed using KG-Chart LE for Cross Stitch.)

Untitled



(This chart is printed using KG-Chart LE for Cross Stitch.)

Untitled



(This chart is printed using KG-Chart LE for Cross Stitch.)

Stitch Count: 74w x 86h

Finished Size: 13.42 cm x 15.60 cm (28 ct./inch)

Cloth: aida cloth

Cloth's Color: White

of colors: 26 Colors

Color Table (DMC)

Cross Stitch

	310	(731 ct)
	939	(606 ct)
	823	(404 ct)
	814	(37 ct)
	3021	(222 ct)
	3362	(192 ct)
	535	(188 ct)
	779	(114 ct)
	317	(128 ct)
	640	(129 ct)
	926	(171 ct)
	3022	(128 ct)
	347	(30 ct)
	3863	(53 ct)
	223	(30 ct)
	3859	(456 ct)
	437	(2 ct)
	3023	(128 ct)
	3024	(61 ct)
	677	(27 ct)
	745	(260 ct)
	3072	(83 ct)
	ECRU	(51 ct)
	3865	(66 ct)
	BLANC	(48 ct)
	B5200	(2019 ct)