

Portal Party



(This chart is printed using KG-Chart LE for Cross Stitch.)

Portal Party



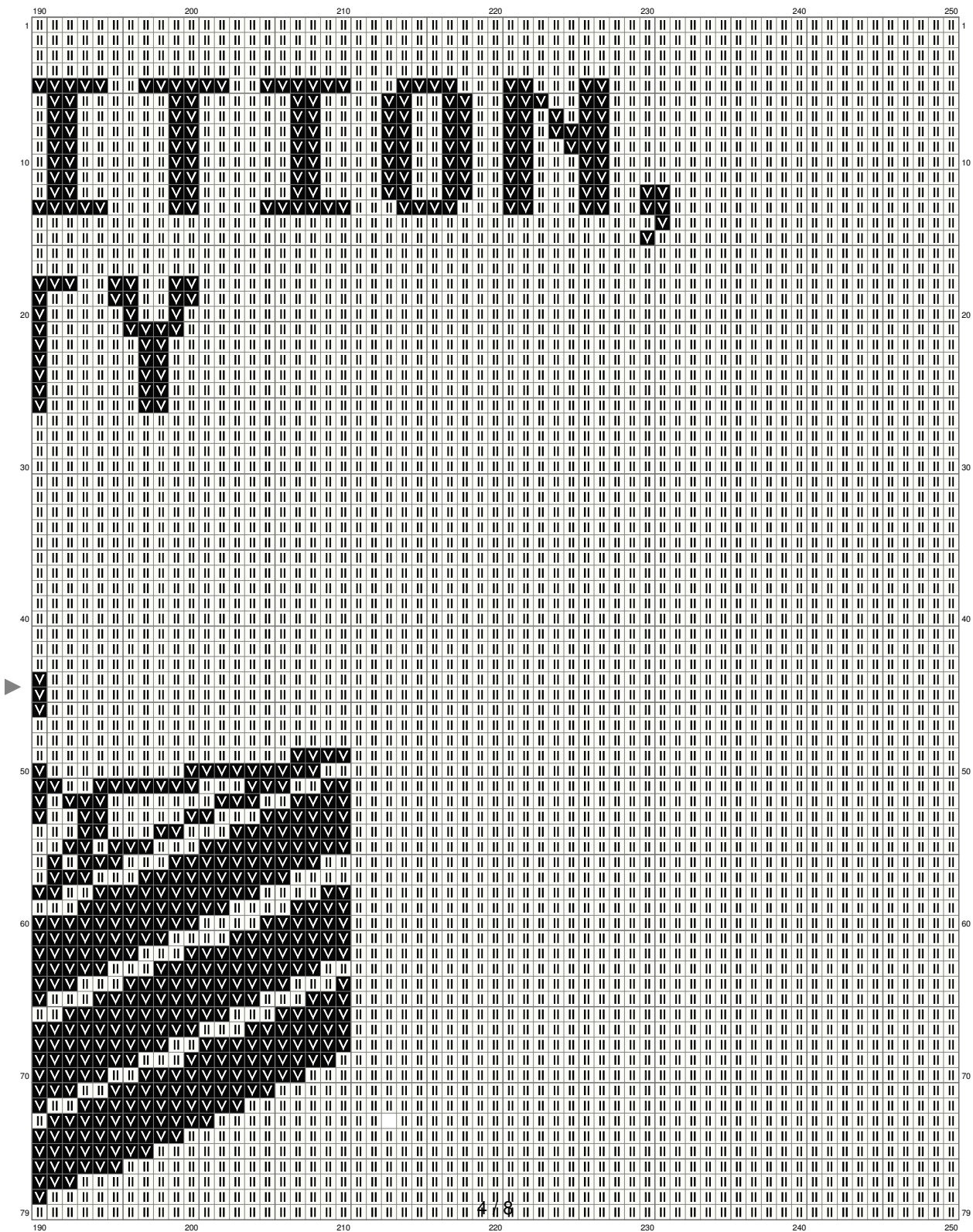
(This chart is printed using KG-Chart LE for Cross Stitch.)

Portal Party



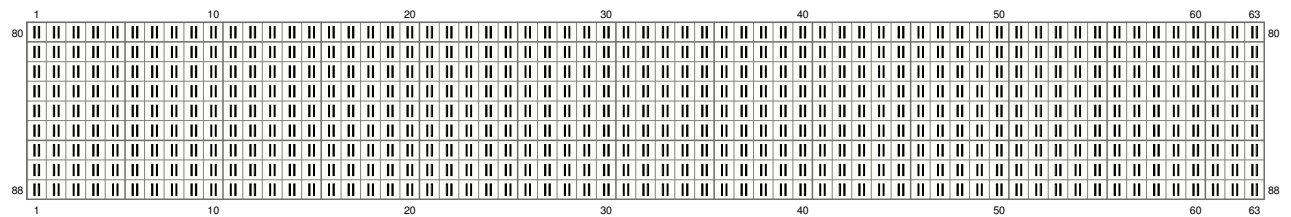
(This chart is printed using KG-Chart LE for Cross Stitch.)

Portal Party



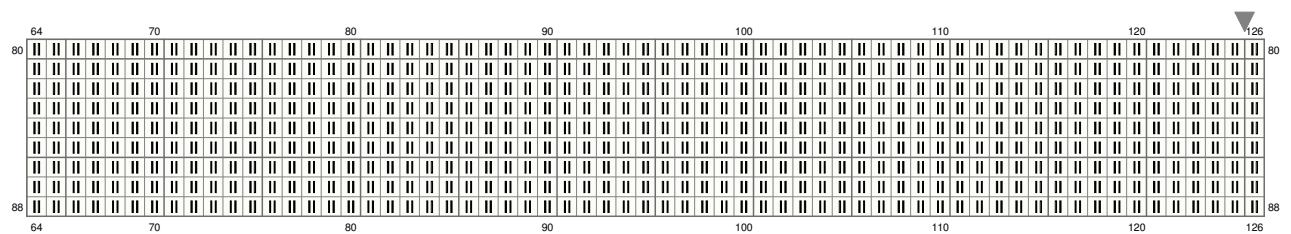
(This chart is printed using KG-Chart LE for Cross Stitch.)

Portal Party



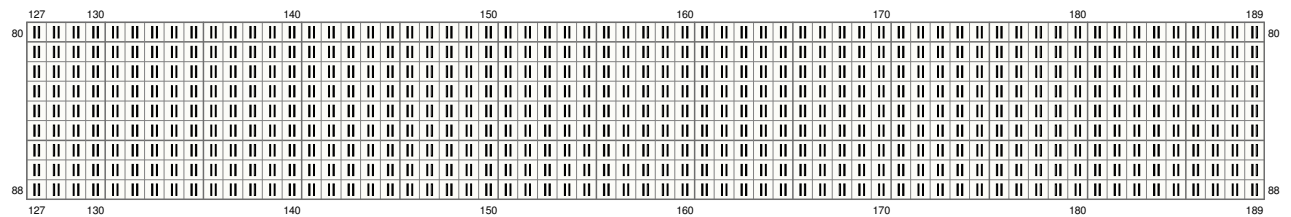
(This chart is printed using KG-Chart LE for Cross Stitch.)

Portal Party



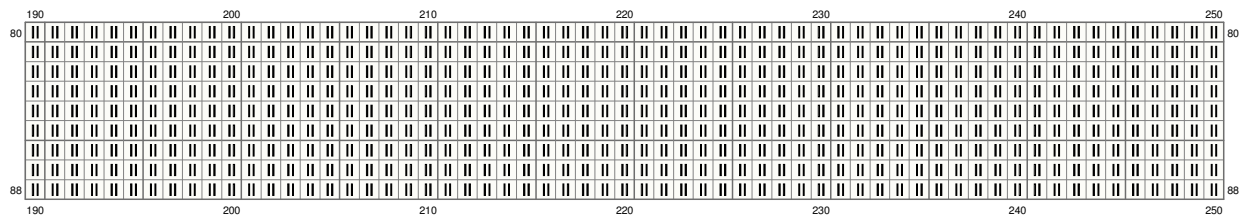
(This chart is printed using KG-Chart LE for Cross Stitch.)

Portal Party



(This chart is printed using KG-Chart LE for Cross Stitch.)

Portal Party





(This chart is printed using KG-Chart LE for Cross Stitch.)

Stitch Count: 250w x 88h
Finished Size: 45.35 cm x 15.96 cm (28 ct./inch)
Cloth: Aida
Cloth's Color: White
of colors: 2 Colors

Color Table (DMC)

Cross Stitch

	310	(3862 ct)
	BLANC	(18128 ct)