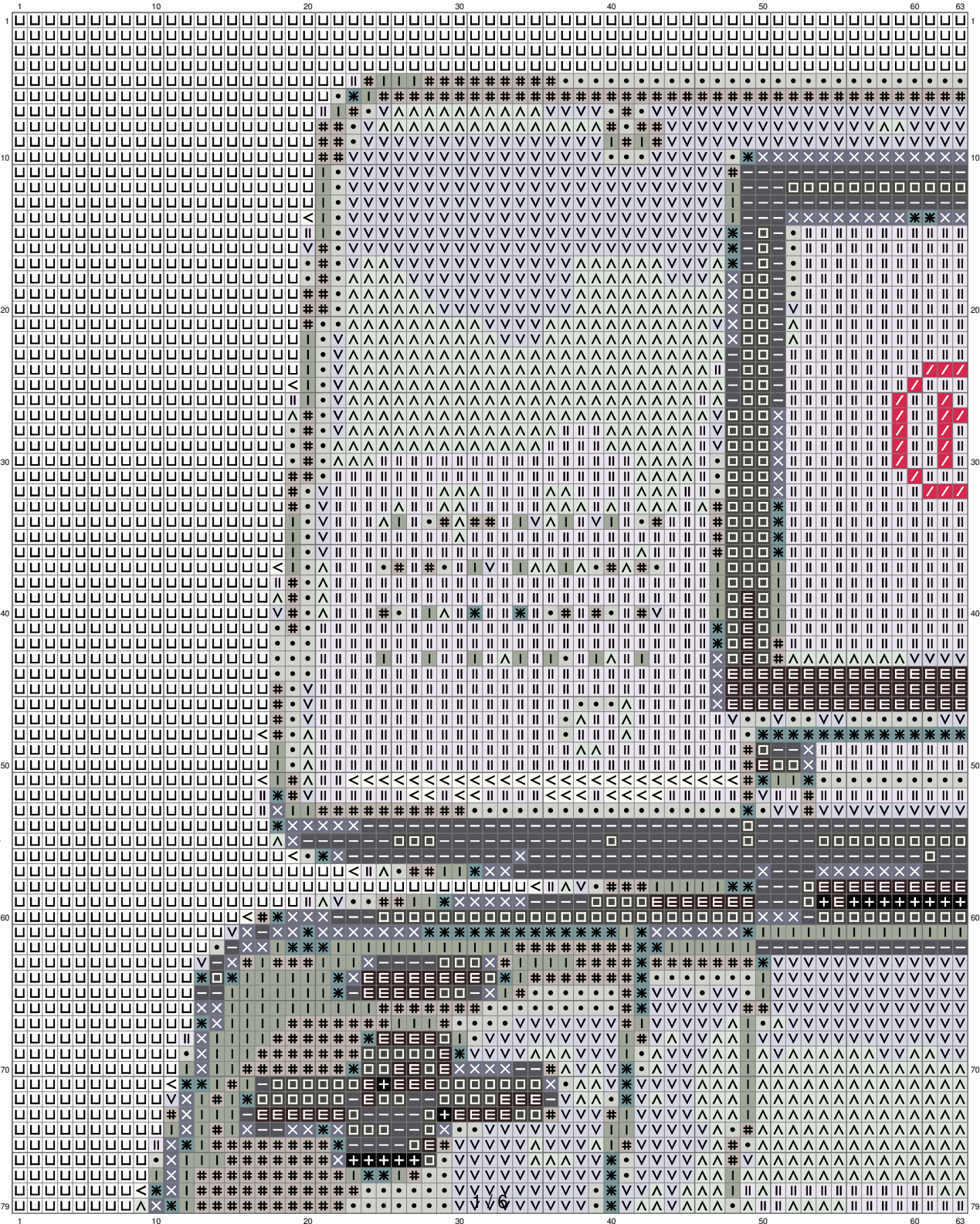
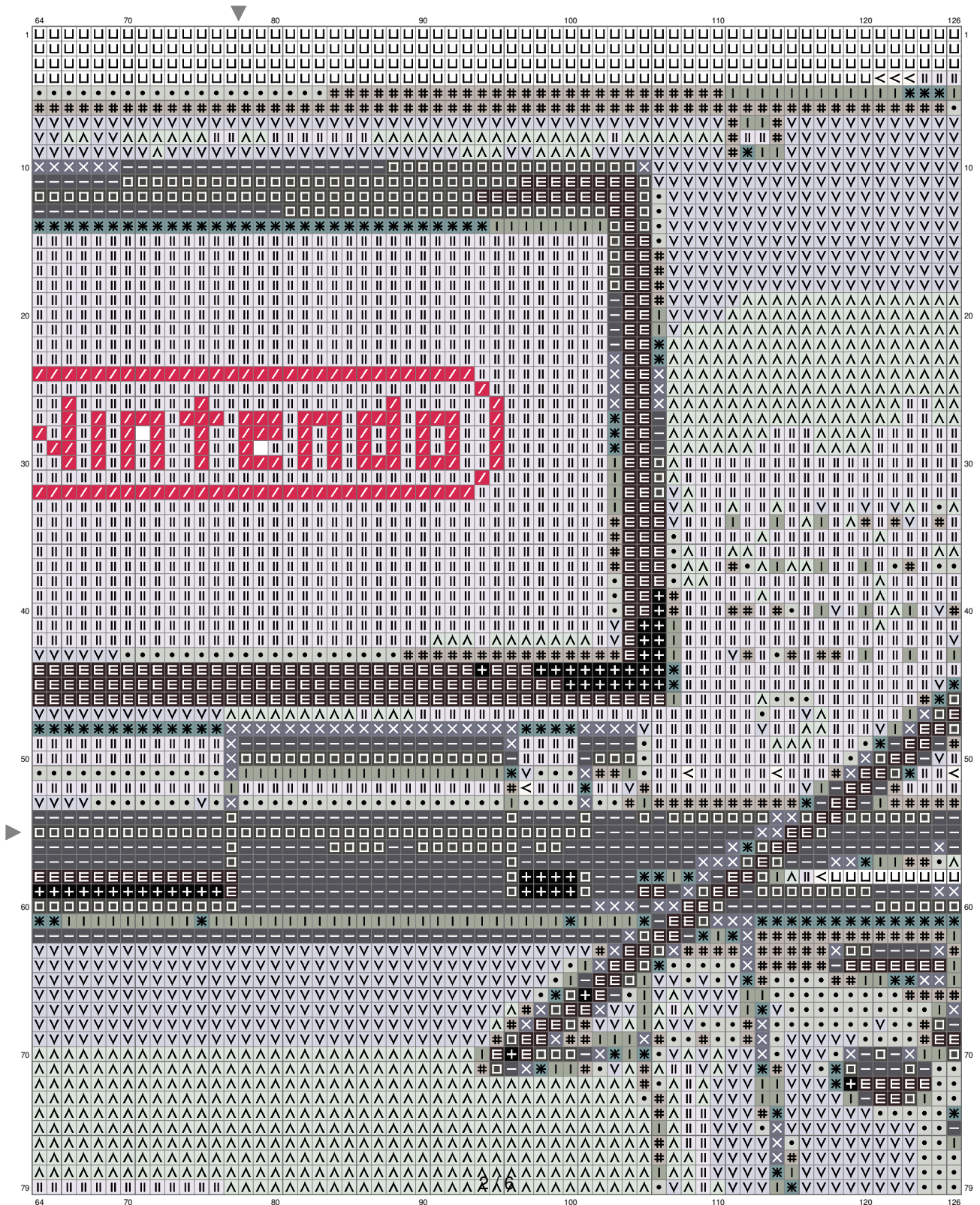


Untitled

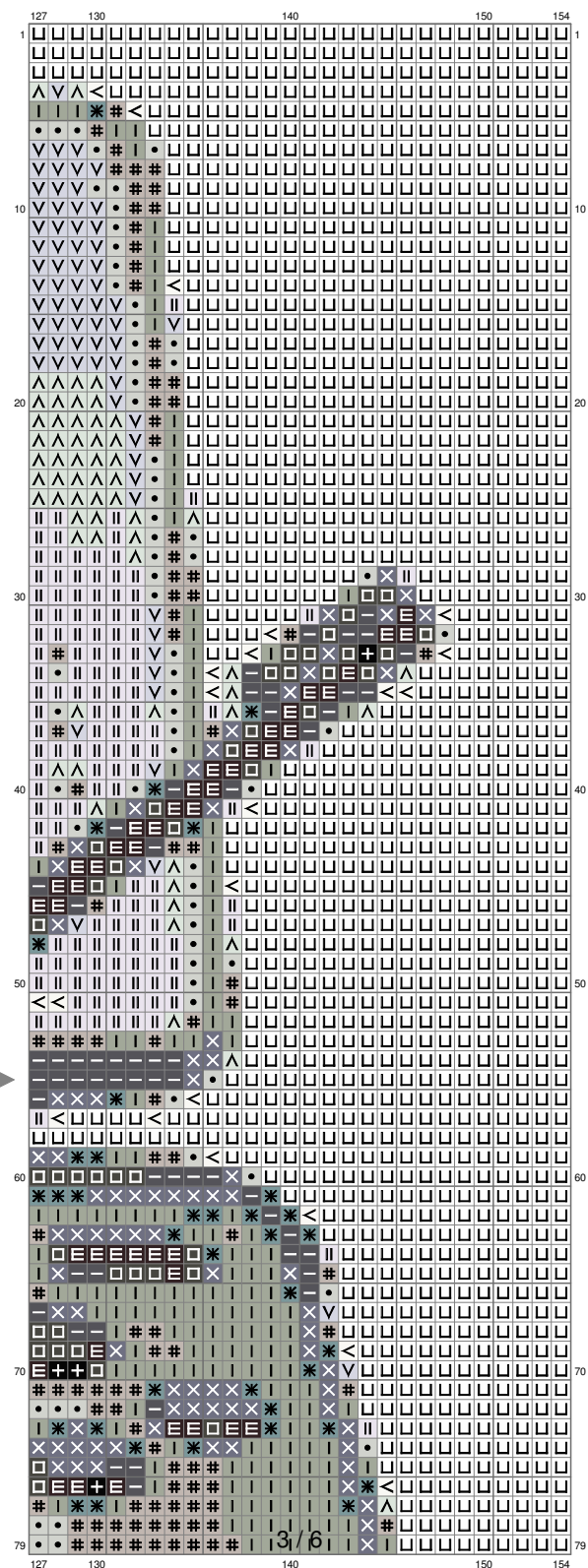


(This chart is printed using KG-Chart LE for Cross Stitch.)

Untitled

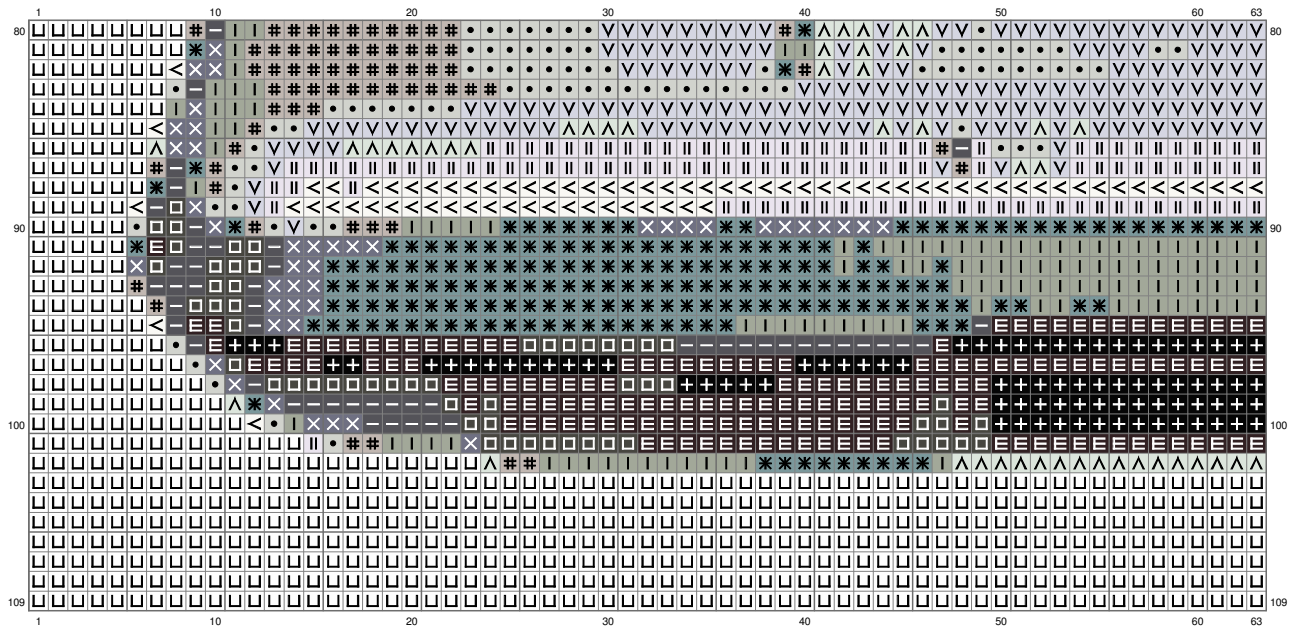


Untitled

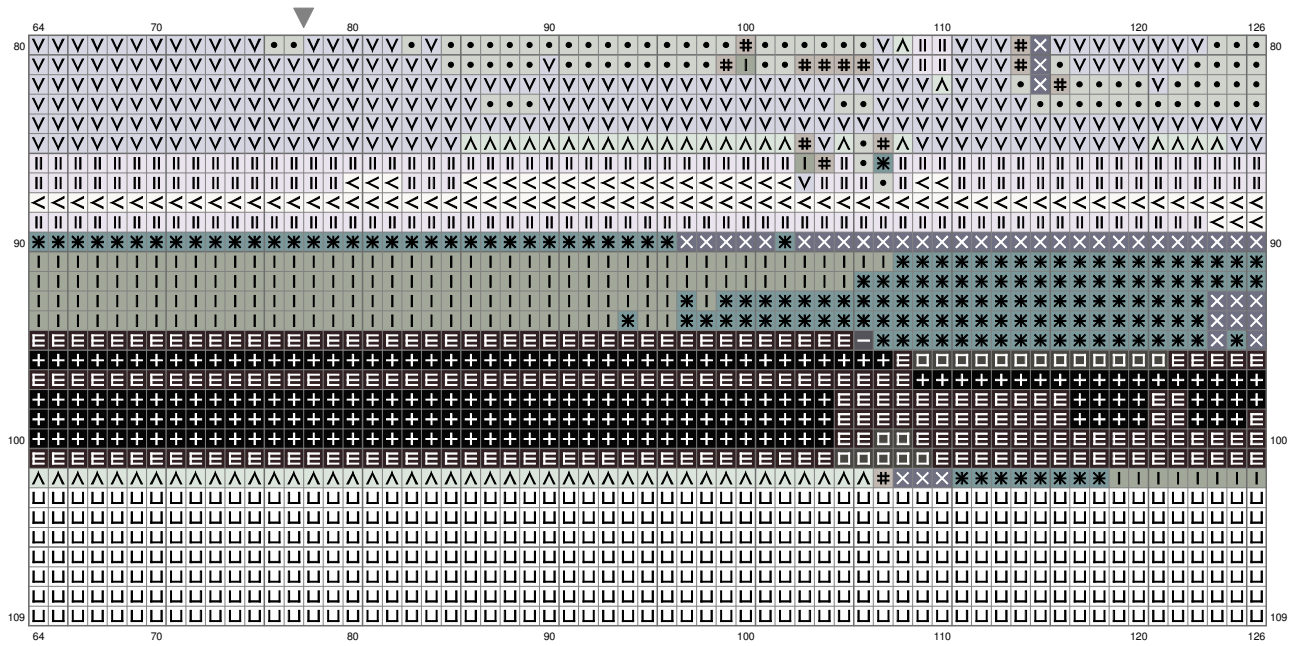


(This chart is printed using KG-Chart LE for Cross Stitch.)

Untitled

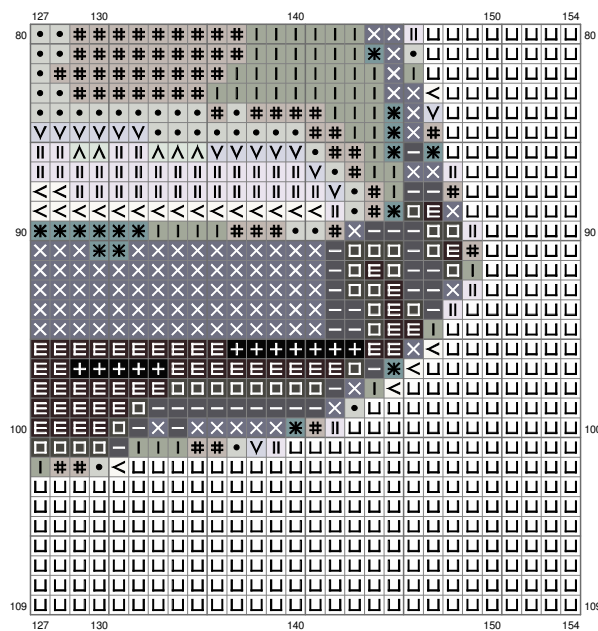


Untitled



(This chart is printed using KG-Chart LE for Cross Stitch.)

Untitled



Stitch Count: 154w x 109h

Finished Size: 27.94 cm x 19.77 cm (28 ct./inch)

Cloth: Linen

Cloth's Color: White

of colors: 15 Colors

Color Table (DMC)

Cross Stitch

	310	(365 ct)
	939	(833 ct)
	3021	(609 ct)
	3799	(758 ct)
	317	(483 ct)
	926	(600 ct)
	3022	(840 ct)
	647	(719 ct)
	648	(692 ct)
	415	(1834 ct)
	3072	(1410 ct)
	762	(2723 ct)
	3865	(263 ct)
	B5200	(4502 ct)
	3831	6156 ct)