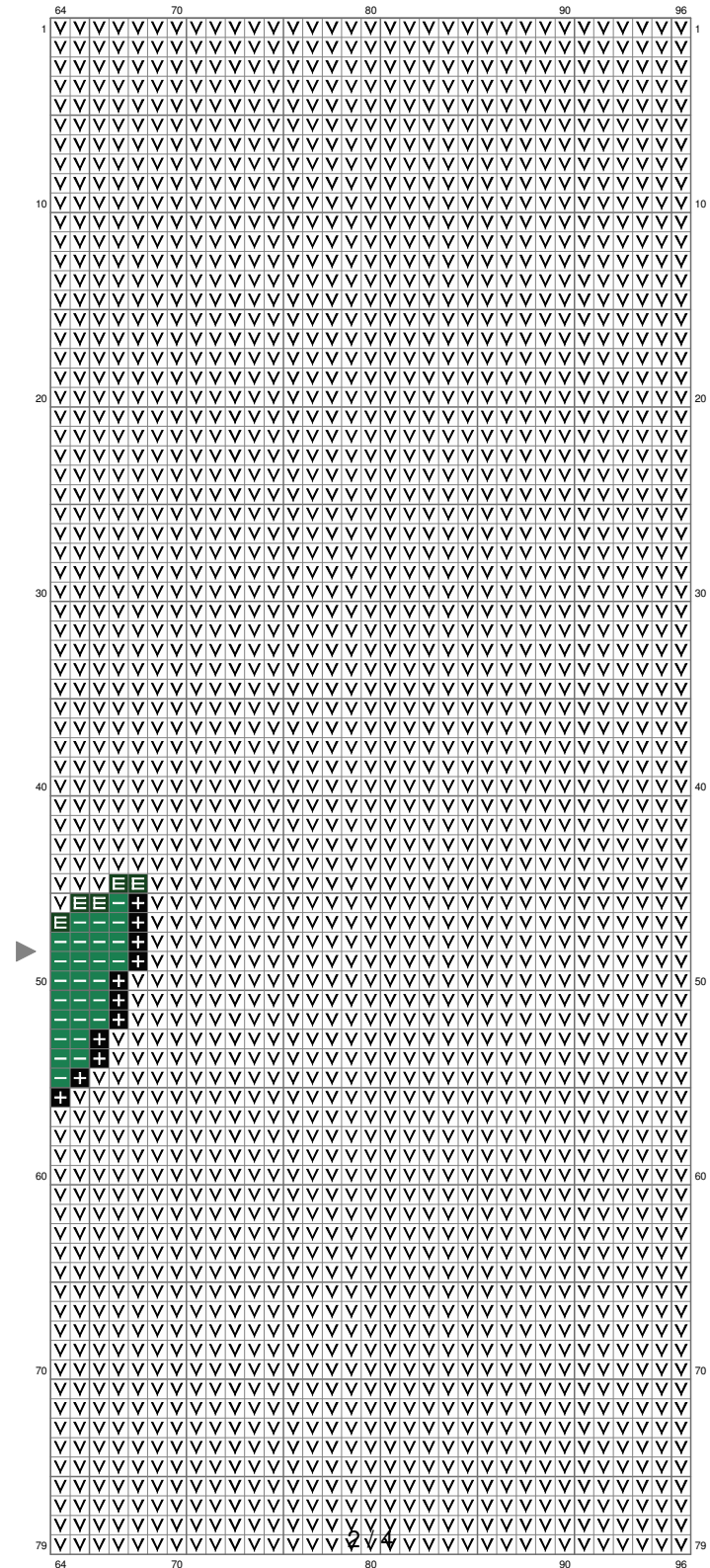


snivy



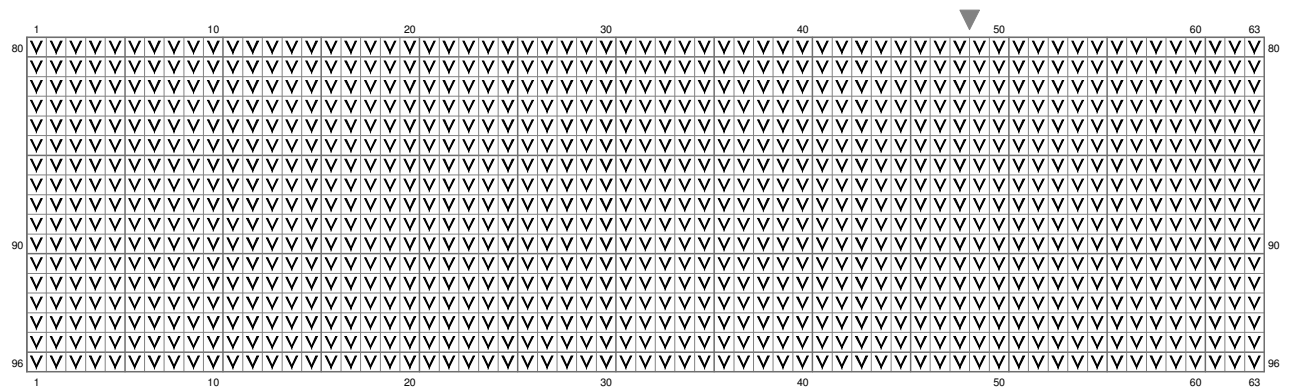
(This chart is printed using KG-Chart LE for Cross Stitch.)

# snivy

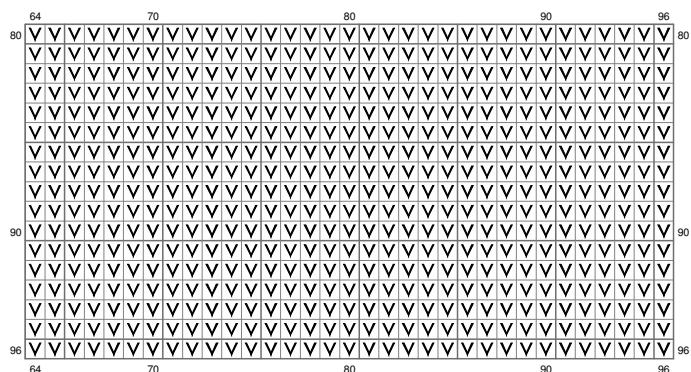


(This chart is printed using KG-Chart LE for Cross Stitch.)

# snivy



# snivy



(This chart is printed using KG-Chart LE for Cross Stitch.)

Stitch Count: 96w x 96h

Finished Size: 34.83 cm x 34.83 cm (14 ct./inch)

Cloth: Aida

Cloth's Color: White

# of colors: 10 Colors

## Color Table (DMC)

### Cross Stitch

	310	(130 ct)
	890	(74 ct)
	909	(22 ct)
	910	(234 ct)
	815	(12 ct)
	732	(50 ct)
	166	(39 ct)
	444	(51 ct)
	3078	(113 ct)
	B5200	(8491 ct)