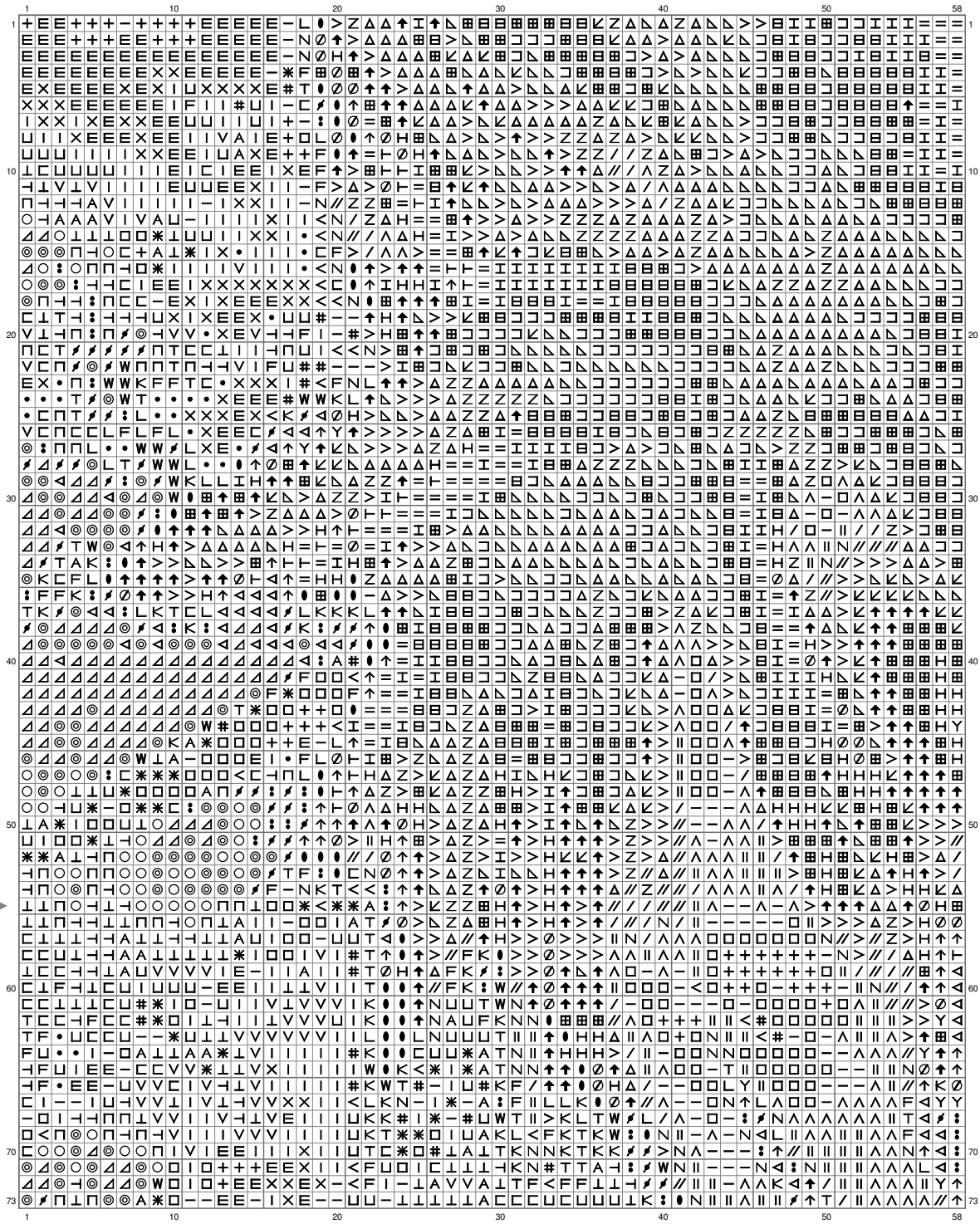
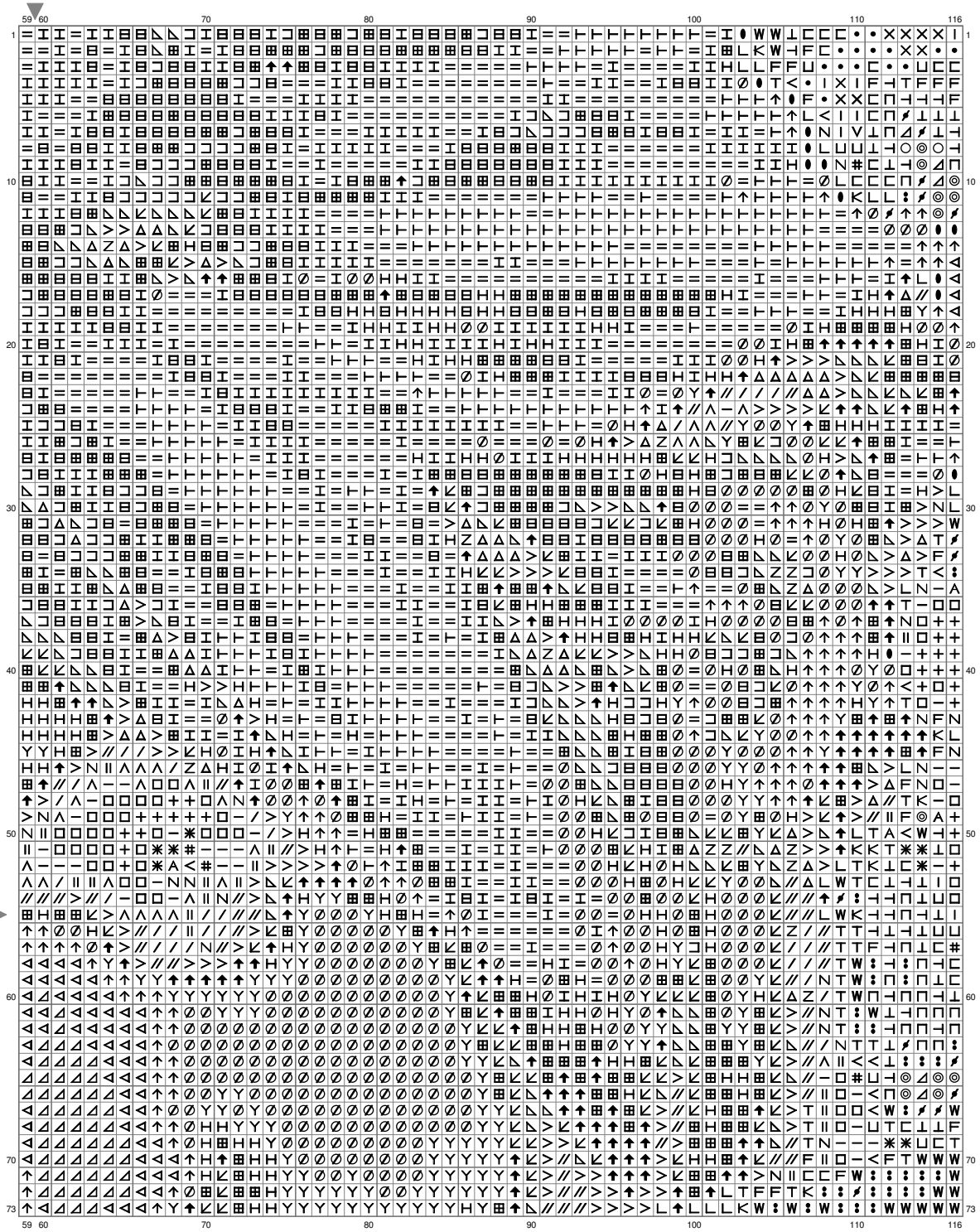


# Untitled



(This chart is printed using KG-Chart LE for Cross Stitch.)

# Untitled



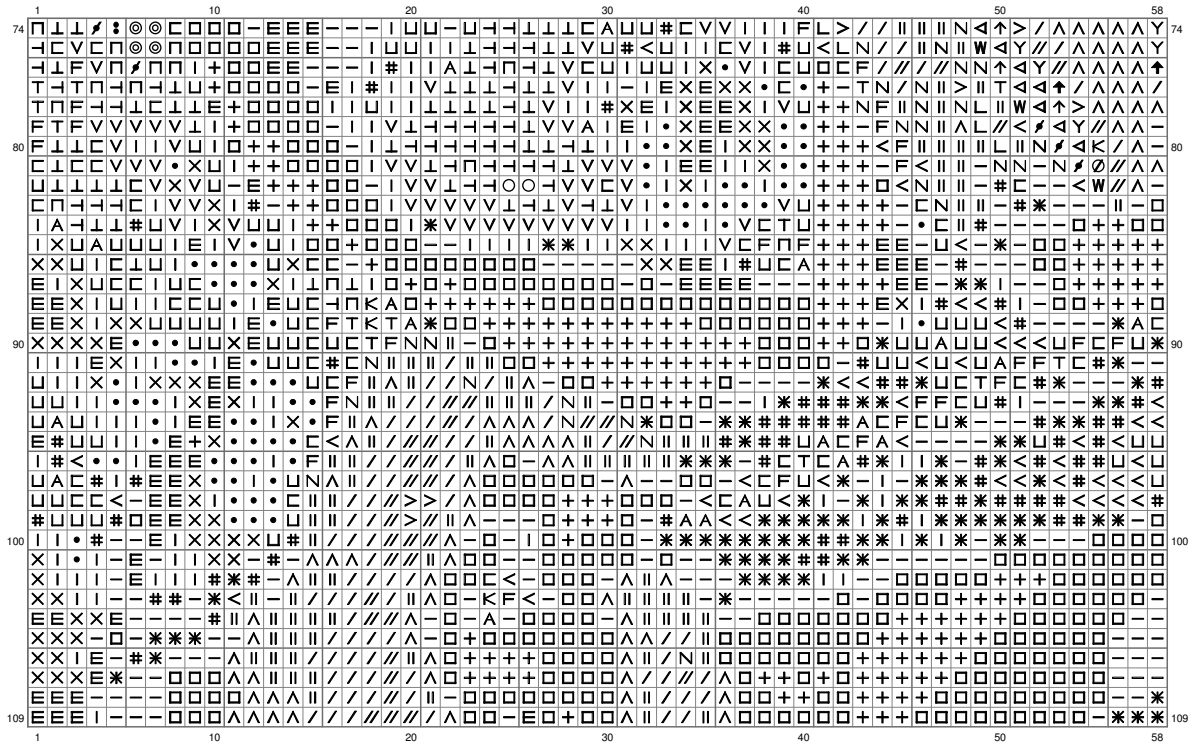
(This chart is printed using KG-Chart LE for Cross Stitch.)

# Untitled



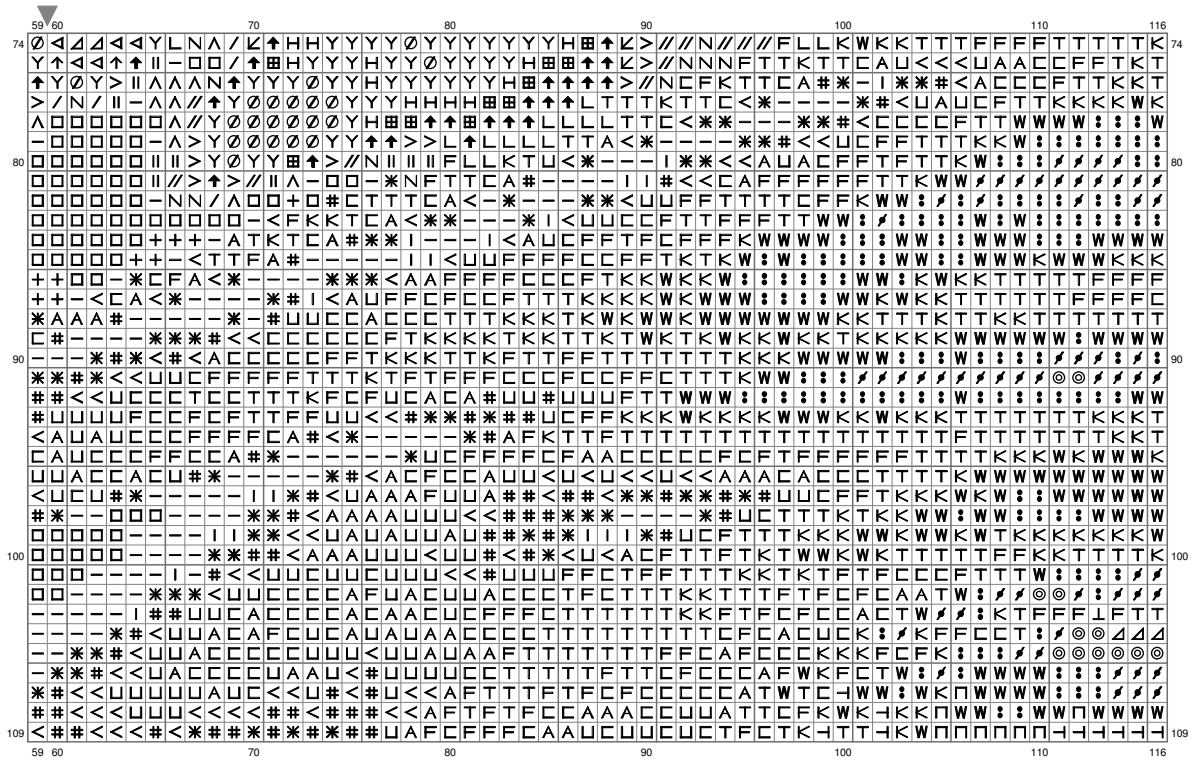
(This chart is printed using KG-Chart LE for Cross Stitch.)

# Untitled



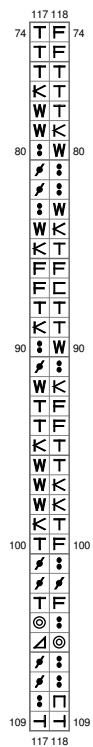
(This chart is printed using KG-Chart LE for Cross Stitch.)

# Untitled



(This chart is printed using KG-Chart LE for Cross Stitch.)

# Untitled



(This chart is printed using KG-Chart LE for Cross Stitch.)

# Untitled

Stitch Count: 118w x 109h

Finished Size: 42.81 cm x 39.55 cm (14 ct./inch)










































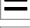

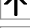

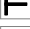




Cloth: Aida

Cloth's Color: White

# of colors: 50 Colors

## Color Table (DMC)

### Cross Stitch

	310	(297 ct)		830	(361 ct)
	890	(196 ct)		831	(341 ct)
	939	(593 ct)		420	(393 ct)
	934	(481 ct)		3052	(77 ct)
	319	(146 ct)		3862	(206 ct)
	3021	(227 ct)		370	(360 ct)
	895	(338 ct)		435	(324 ct)
	935	(193 ct)		729	(574 ct)
	3345	(126 ct)		3045	(445 ct)
	501	(119 ct)		422	(288 ct)
	938	(217 ct)		834	(548 ct)
	3031	(202 ct)		646	(228 ct)
	3362	(184 ct)		3022	(229 ct)
	520	(302 ct)		3864	(197 ct)
	433	(158 ct)		3013	(67 ct)
	869	(118 ct)		523	(215 ct)
	3781	(110 ct)		3023	(154 ct)
	610	(146 ct)		3747	(53 ct)
	535	(161 ct)		928	(122 ct)
	645	(332 ct)		437	(478 ct)
	3787	(277 ct)		3855	(679 ct)
	640	(367 ct)		738	(170 ct)
	3768	(159 ct)		744	(330 ct)
	926	(144 ct)		739	(135 ct)
	503	(98 ct)		3865	(197 ct)