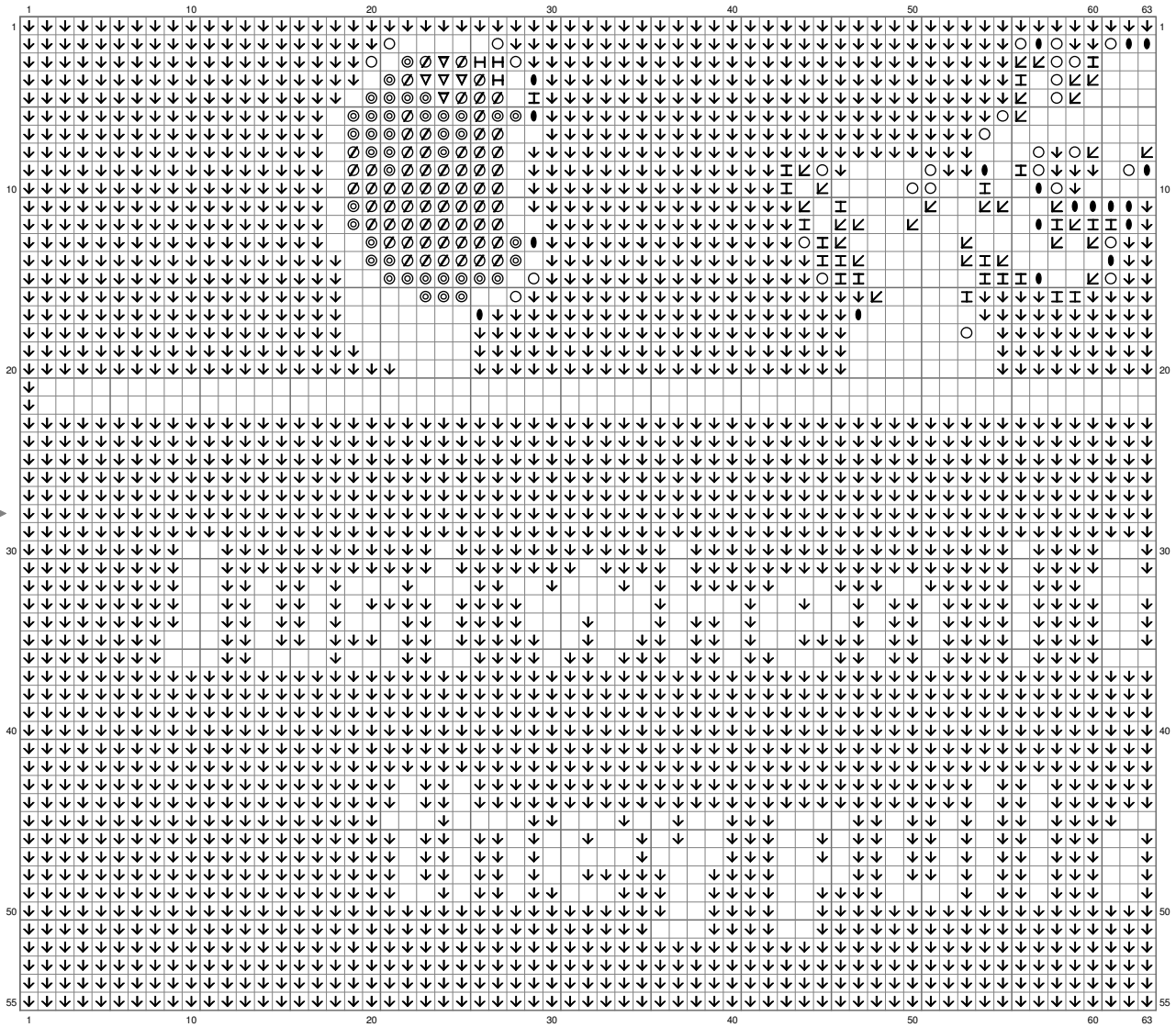
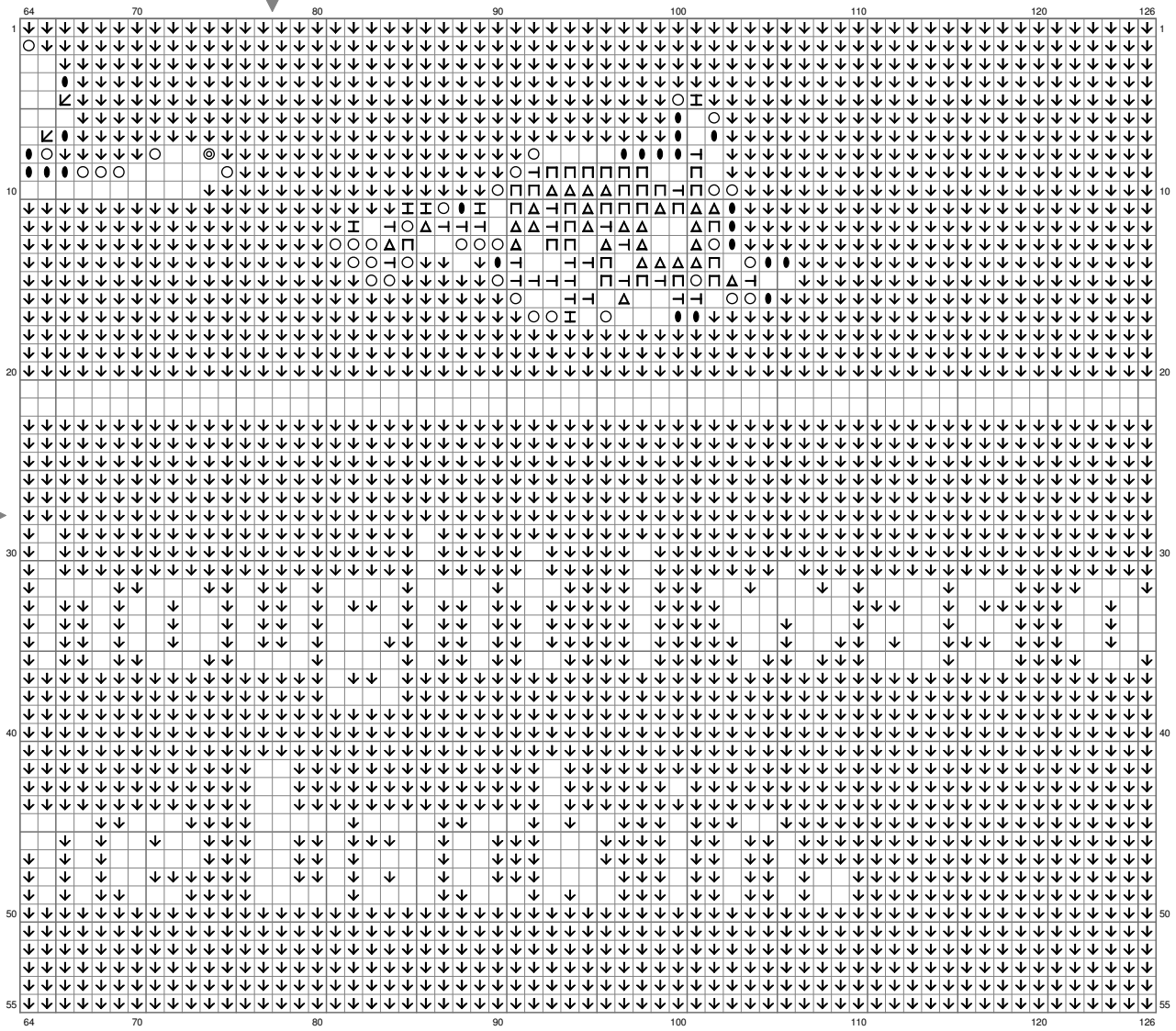


GodfatherSmash



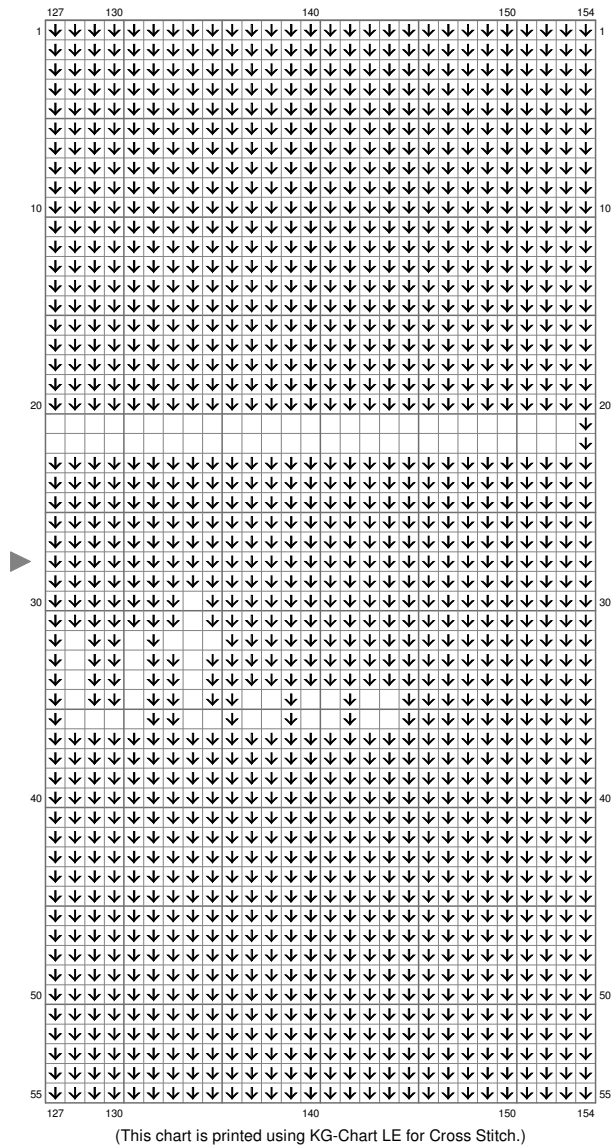
(This chart is printed using KG-Chart LE for Cross Stitch.)

GodfatherSmash



(This chart is printed using KG-Chart LE for Cross Stitch.)

GodfatherSmash



GodfatherSmash

Stitch Count: 154w x 55h

Finished Size: 13.97 cm x 4.98 cm (28 ct./inch)























Cloth: Aida

Cloth's Color: White

of colors: 22 Colors

Color Table (DMC)

Cross Stitch

	BLANC	(6955 ct)
	310	(889 ct)
	414	(3 ct)
	524	(66 ct)
	647	(42 ct)
	730	(20 ct)
	732	(26 ct)
	761	(41 ct)
	905	(31 ct)
	909	(38 ct)
	910	(49 ct)
	918	(18 ct)
	930	(5 ct)
	938	(21 ct)
	972	(27 ct)
	3022	(30 ct)
	3689	(65 ct)
	3716	(5 ct)
	3777	(33 ct)
	3790	(66 ct)
	3852	(30 ct)
	3860	(10 ct)