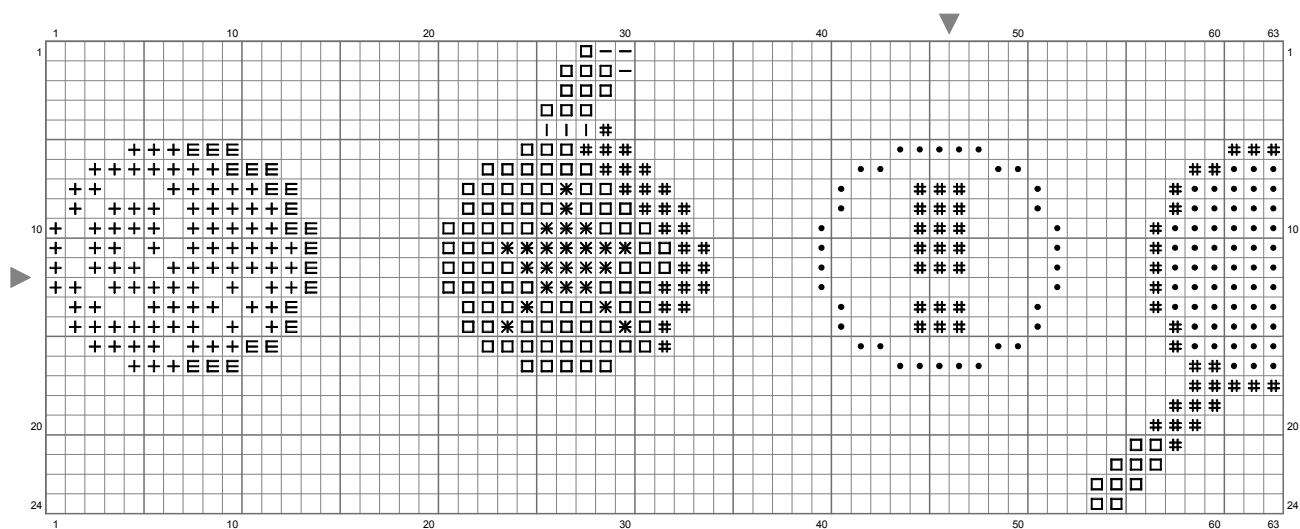
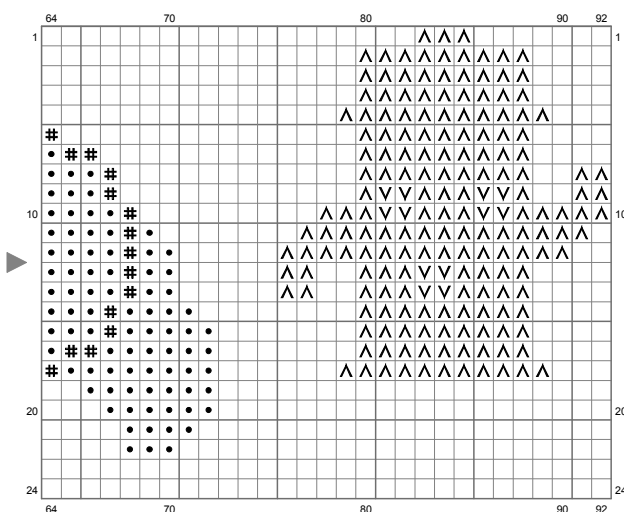


animalxing



(This chart is printed using KG-Chart LE for Cross Stitch.)

animalxing



(This chart is printed using KG-Chart LE for Cross Stitch.)

Stitch Count: 92w x 24h

Finished Size: 16.69 cm x 4.35 cm (28 ct./inch)

Cloth: Aida

Cloth's Color: White

of colors: 10 Colors

Color Table (DMC)

Cross Stitch

+	824	(94 ct)
E	311	(21 ct)
□	972	(102 ct)
—	3852	(3 ct)
✱	938	(24 ct)
I	3371	(3 ct)
#	666	(90 ct)
●	3033	(174 ct)
V	310	(12 ct)
△	165	(174 ct)