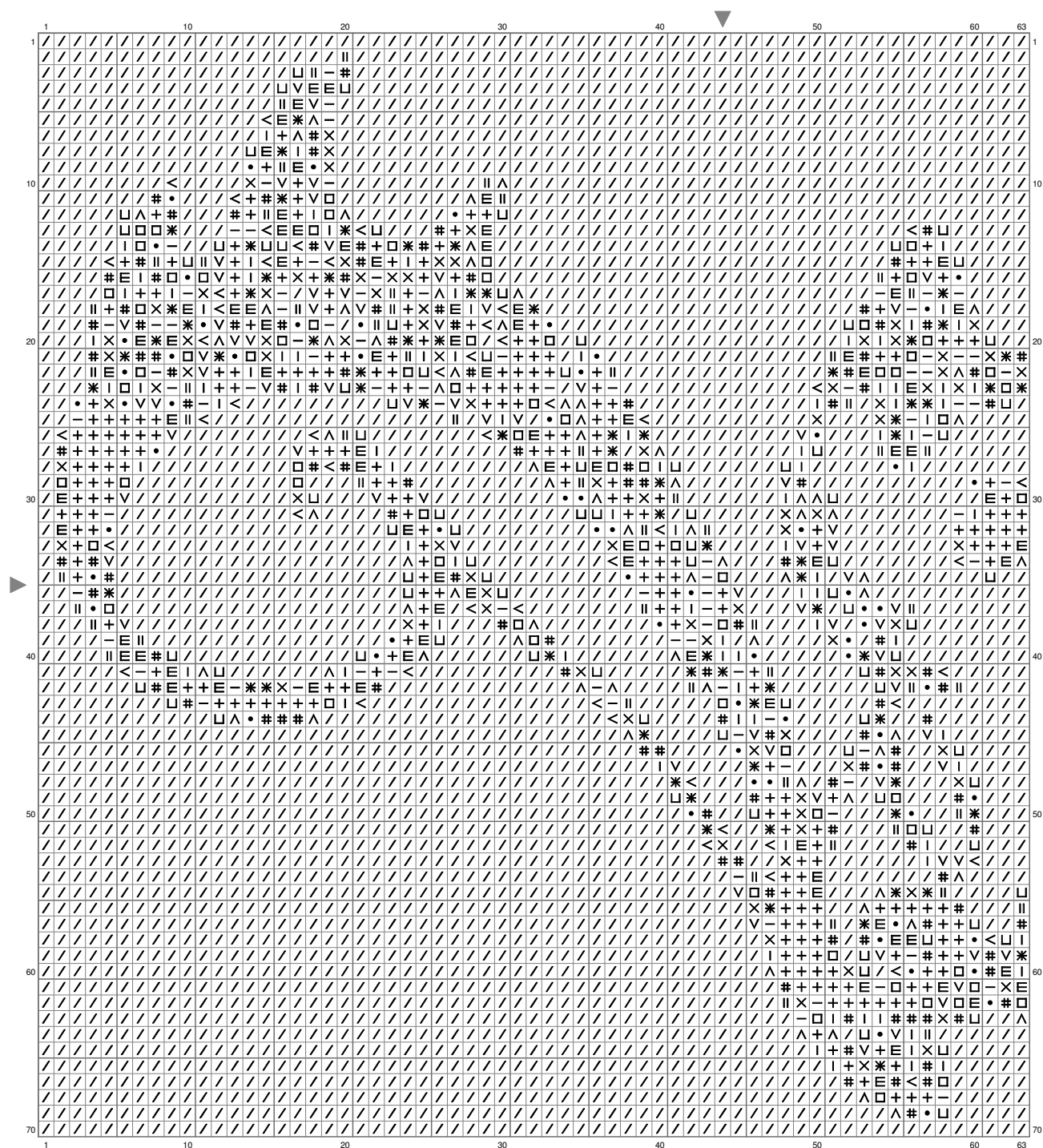
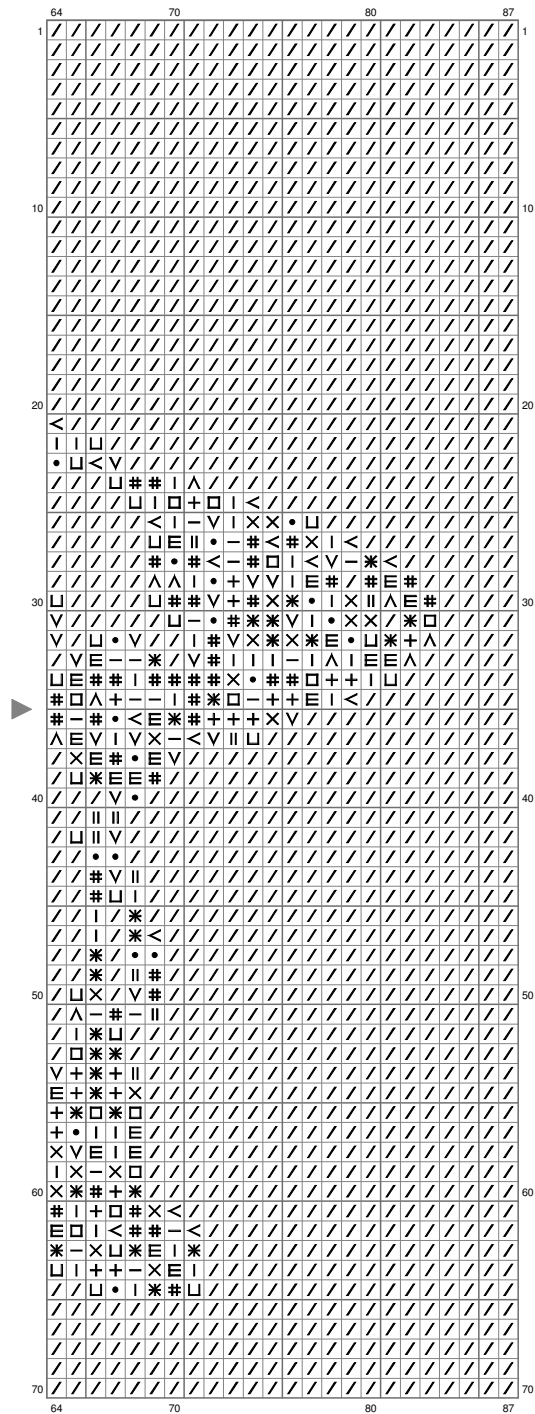


# tribal pachi



# tribal pachi



## tribal pachi

Stitch Count: 87w x 70h

Finished Size: 15.78 cm x 12.7 cm (28 ct./inch)

Cloth: Aida
















Cloth's Color: White

# of colors: 15 Colors

### Color Table (DMC)

---

#### Cross Stitch

	310	(290 ct)
	939	(105 ct)
	500	(83 ct)
	935	(106 ct)
	535	(110 ct)
	3787	(102 ct)
	640	(131 ct)
	3022	(165 ct)
	523	(88 ct)
	3023	(95 ct)
	648	(84 ct)
	3072	(66 ct)
	762	(67 ct)
	3865	(109 ct)
	B5200	(4489 ct)