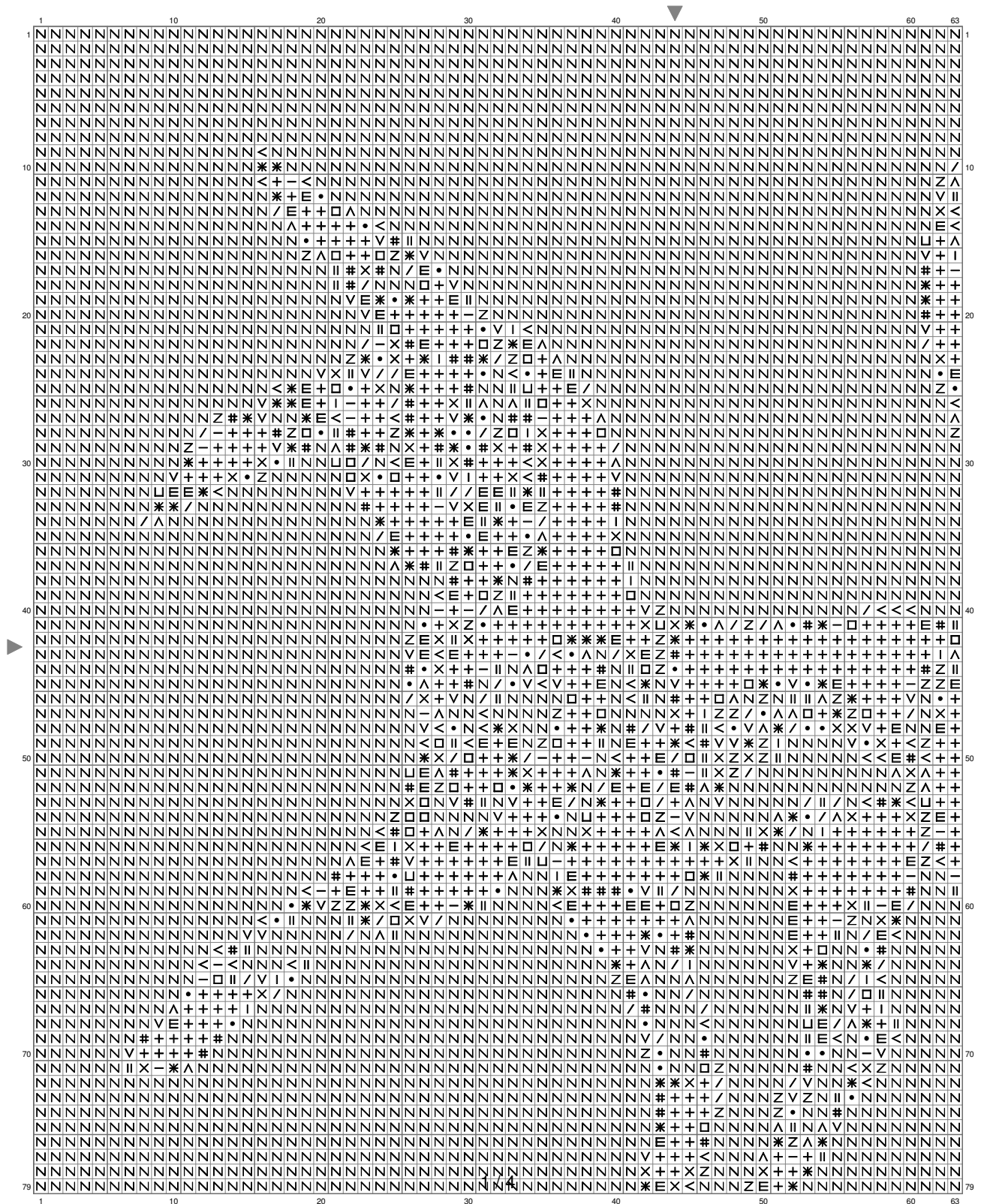
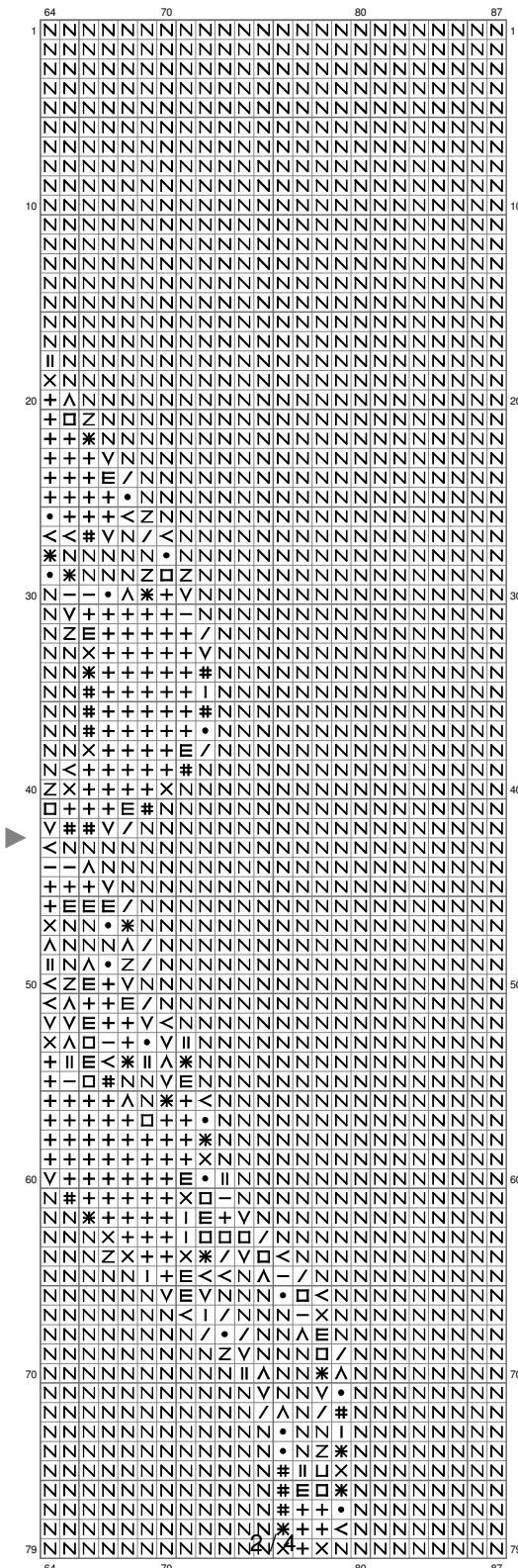


umbreon tribal 1



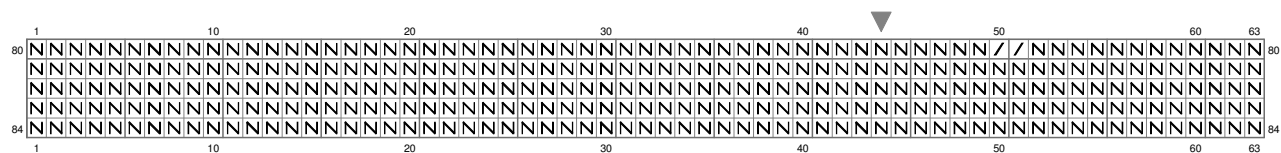
(This chart is printed using KG-Chart LE for Cross Stitch.)

umbreon tribal 1



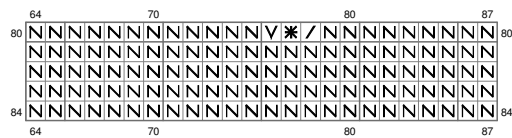
(This chart is printed using KG-Chart LE for Cross Stitch.

umbreon tribal 1



(This chart is printed using KG-Chart LE for Cross Stitch.)

umbreon tribal 1



(This chart is printed using KG-Chart LE for Cross Stitch.)

Stitch Count: 87w x 84h
Finished Size: 15.78 cm x 15.24 cm (28 ct./inch)
Cloth: Aida
Cloth's Color: White
of colors: 17 Colors

Color Table (DMC)

Cross Stitch		
	310	(662 ct)
	939	(97 ct)
	3021	(66 ct)
	3799	(45 ct)
	535	(81 ct)
	640	(109 ct)
	926	(26 ct)
	3022	(95 ct)
	523	(89 ct)
	3023	(81 ct)
	648	(70 ct)
	3072	(71 ct)
	762	(78 ct)
	ECRU	(12 ct)
	3865	(91 ct)
	BLANC	(75 ct)
	B5200	(5560 ct)