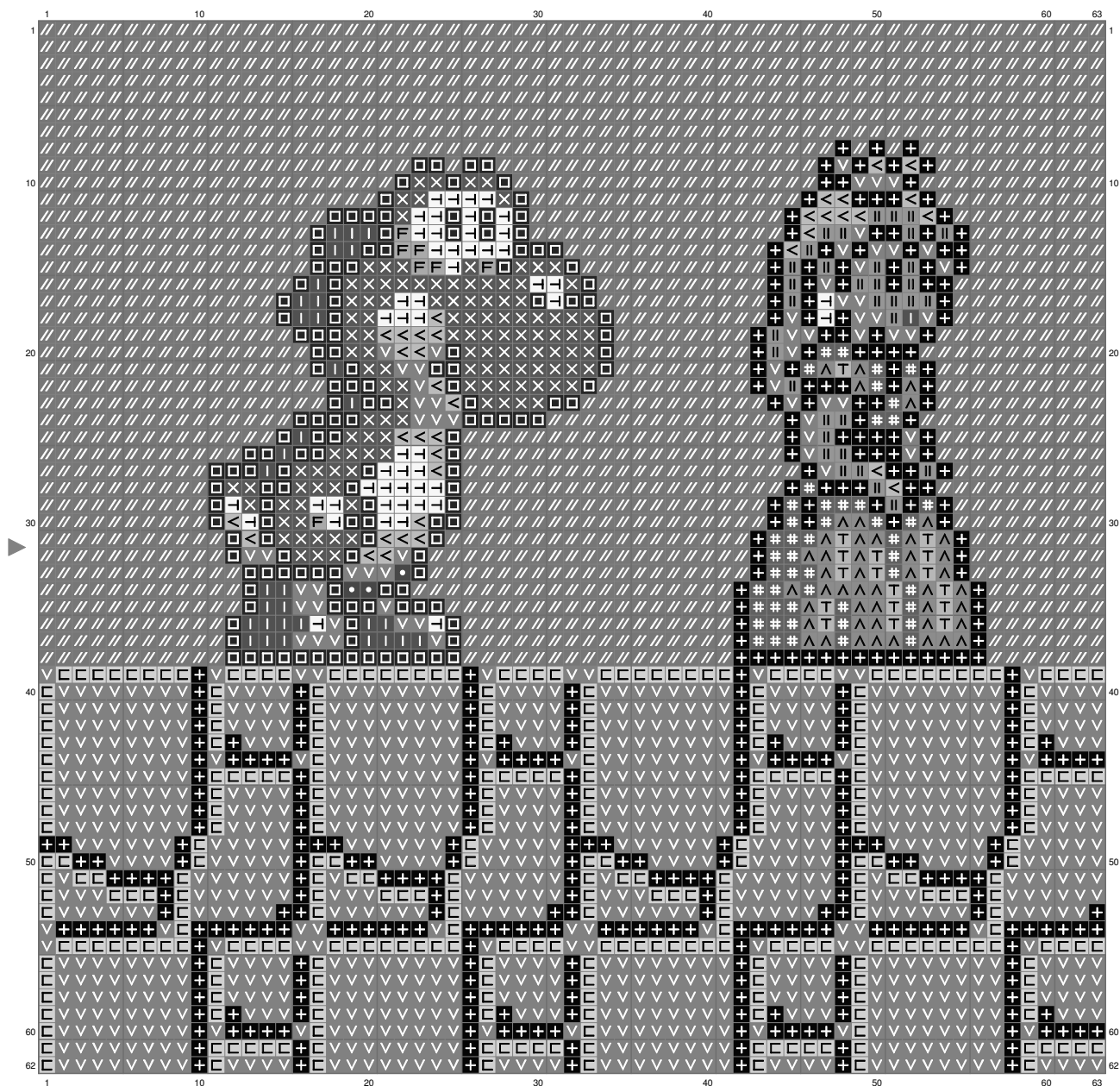
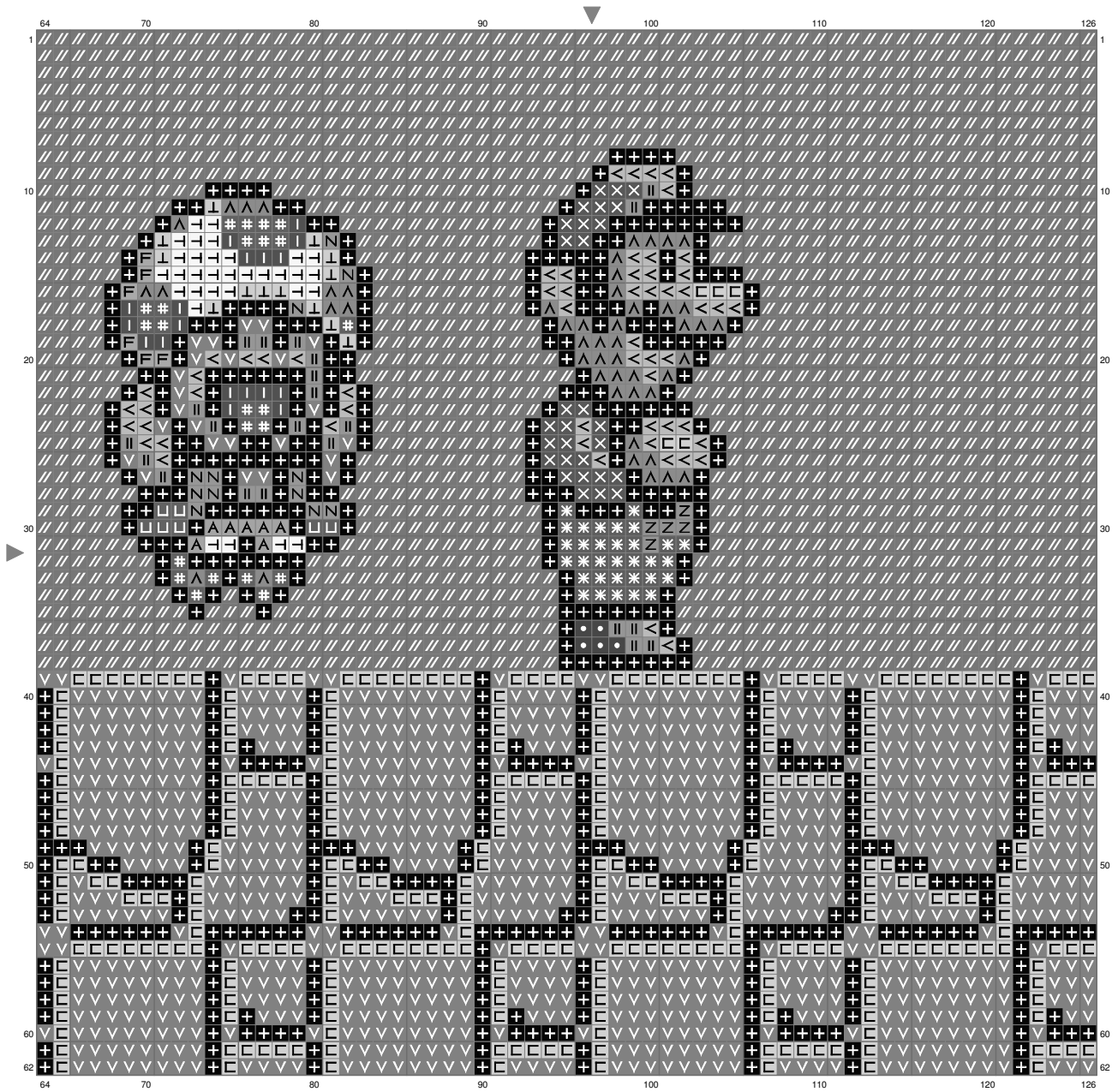


Mario&others



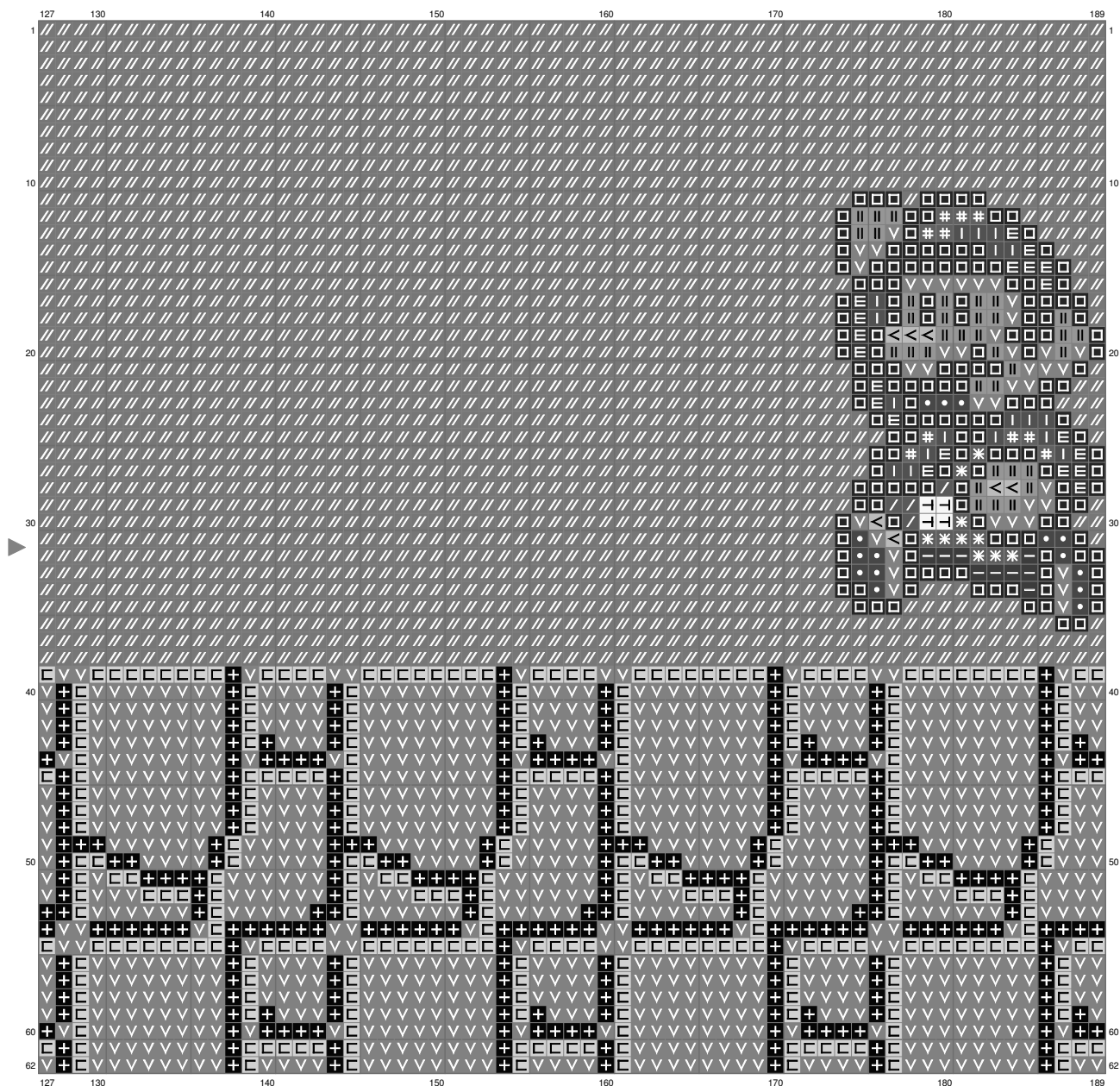
(This chart is printed using KG-Chart LE for Cross Stitch.)

Mario&others



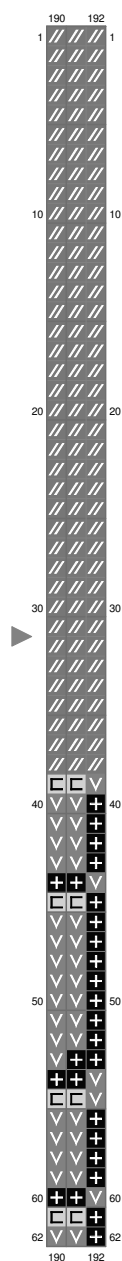
(This chart is printed using KG-Chart LE for Cross Stitch.)

Mario&others



(This chart is printed using KG-Chart LE for Cross Stitch.)

























Mario&others



(This chart is printed using KG-Chart LE for Cross Stitch.)

Stitch Count:192w x 62h
Cloth:Aida Cloth's Color:White
Finished Size:69.66 cm x 22.49 cm
(14 ct./inch)

Total 24 Colors
Color Table (DMC)

Cross Stitch		
	310	(1275 ct)
	498	(20 ct)
	939	(315 ct)
	311	(9 ct)
	986	(154 ct)
	3765	(42 ct)
	817	(69 ct)
	666	(82 ct)
	3777	(23 ct)
	946	(2936 ct)
	3328	(96 ct)
	3853	(92 ct)
	728	(101 ct)
	3844	(7 ct)
	3843	(4 ct)
	3849	(5 ct)
	334	(12 ct)
	798	(5584 ct)
	3022	(7 ct)
	3827	(941 ct)
	156	(13 ct)
	894	(17 ct)
	827	(13 ct)
	3865	(87 ct)