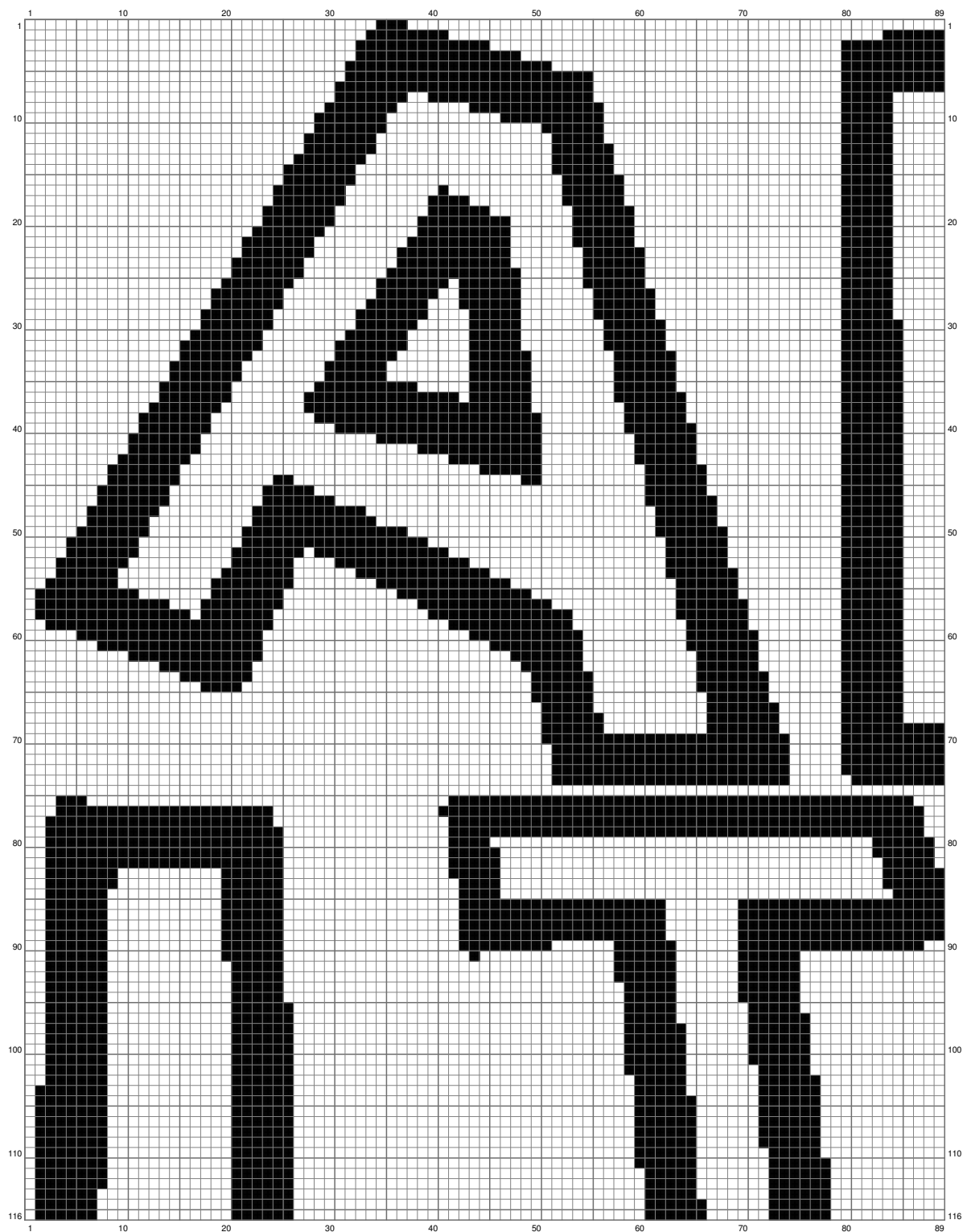
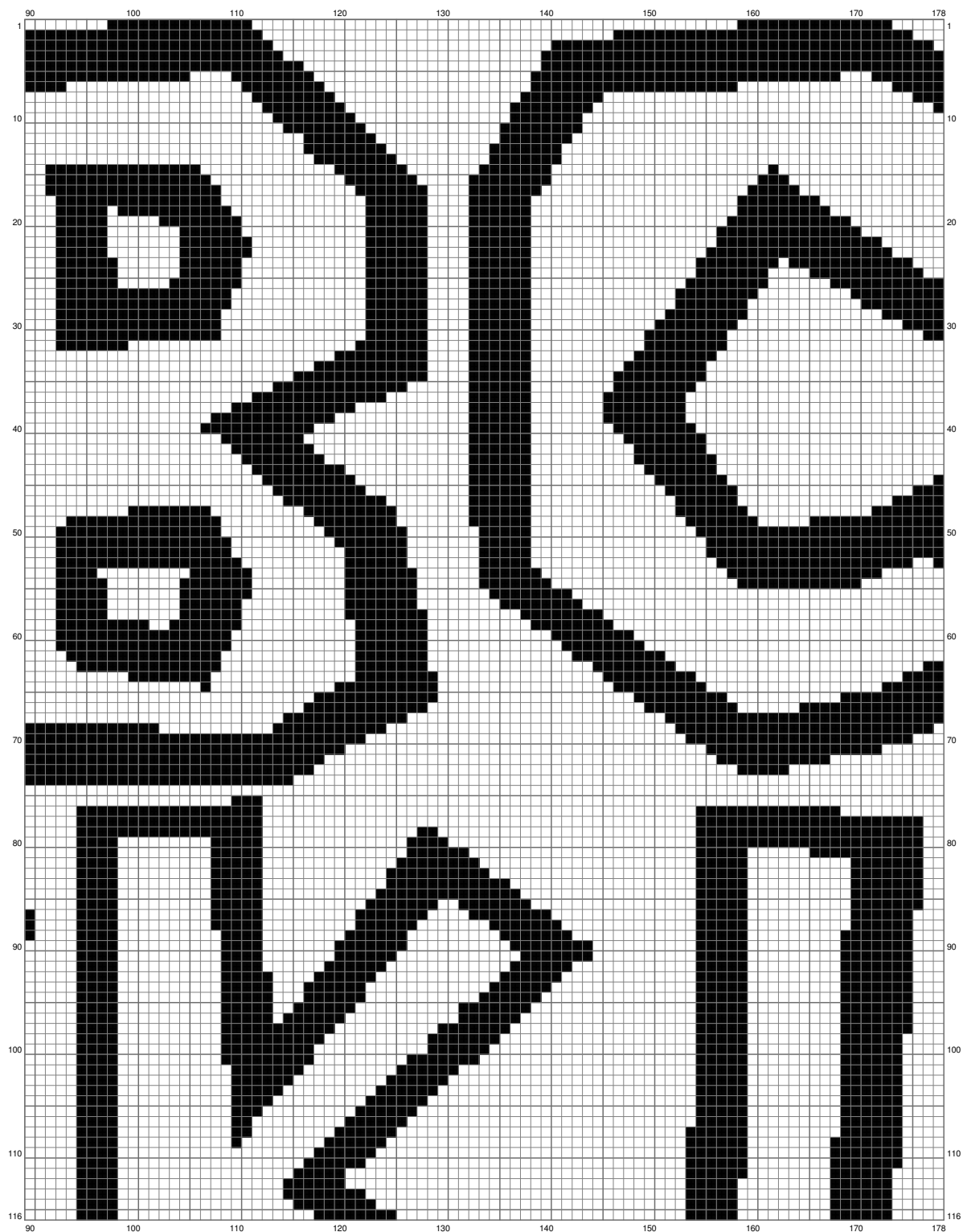


SMB Font



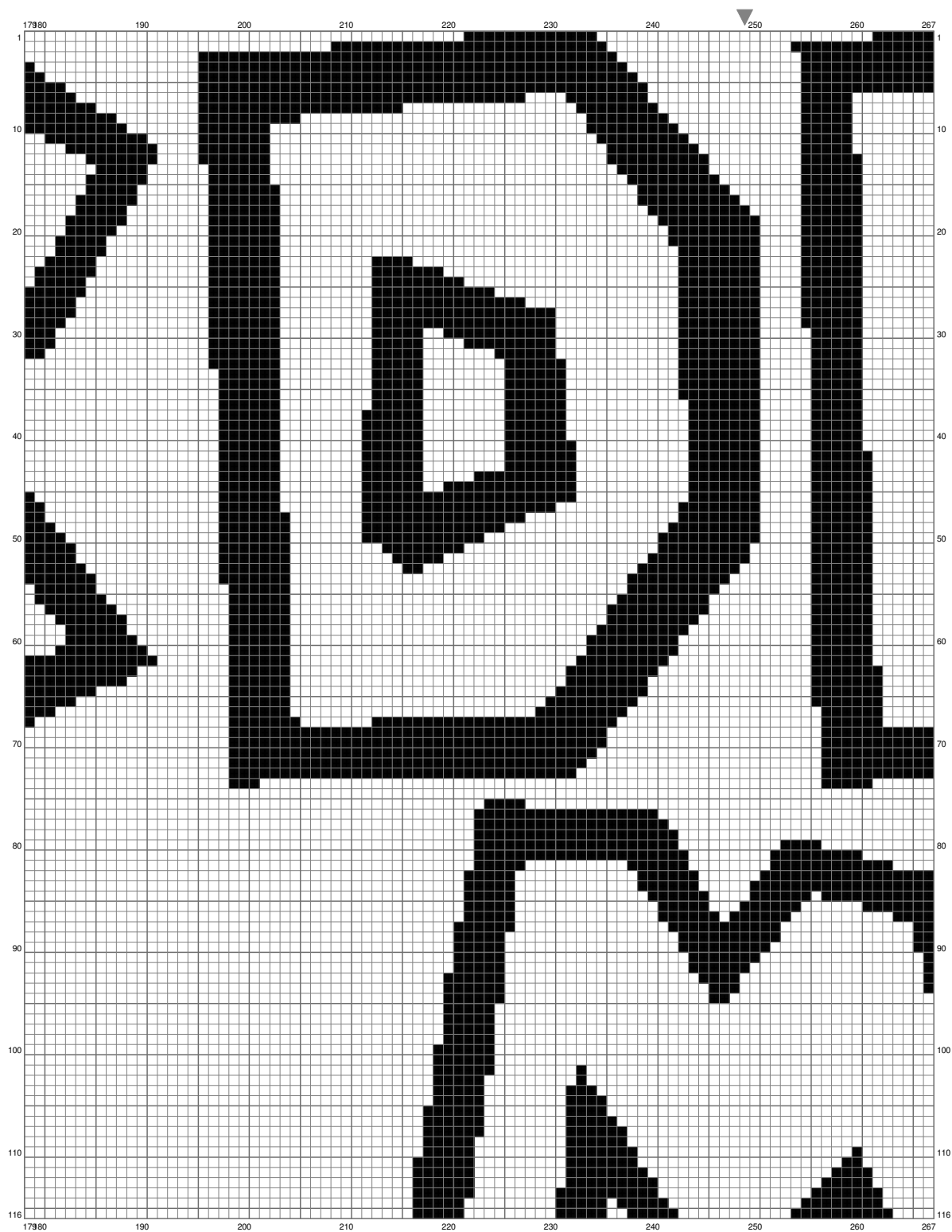
(This chart is printed using KG-Chart LE for Cross Stitch.)

# SMB Font



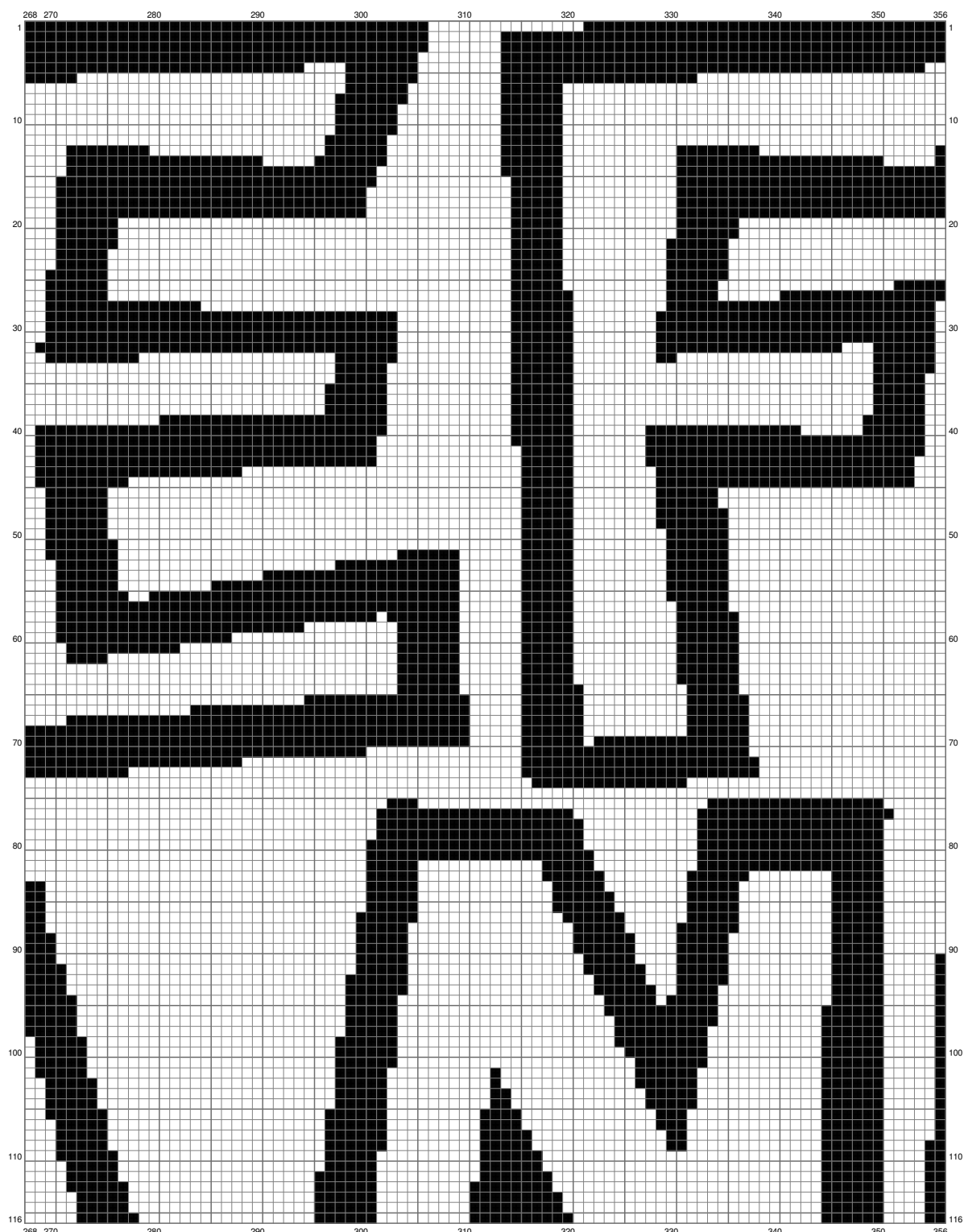
(This chart is printed using KG-Chart LE for Cross Stitch.)

**SMB Font**



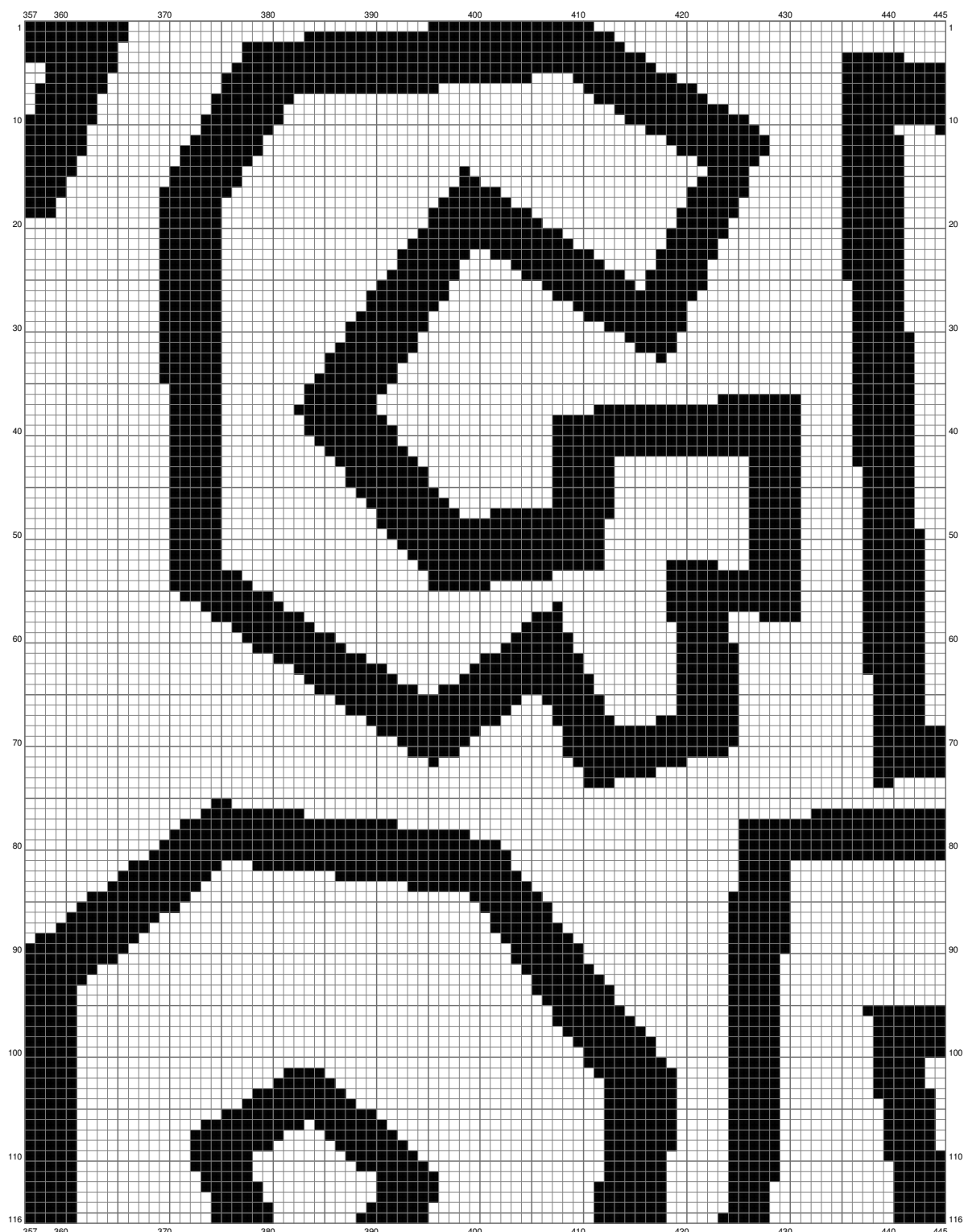
(This chart is printed using KG-Chart LE for Cross Stitch.)

SMB Font



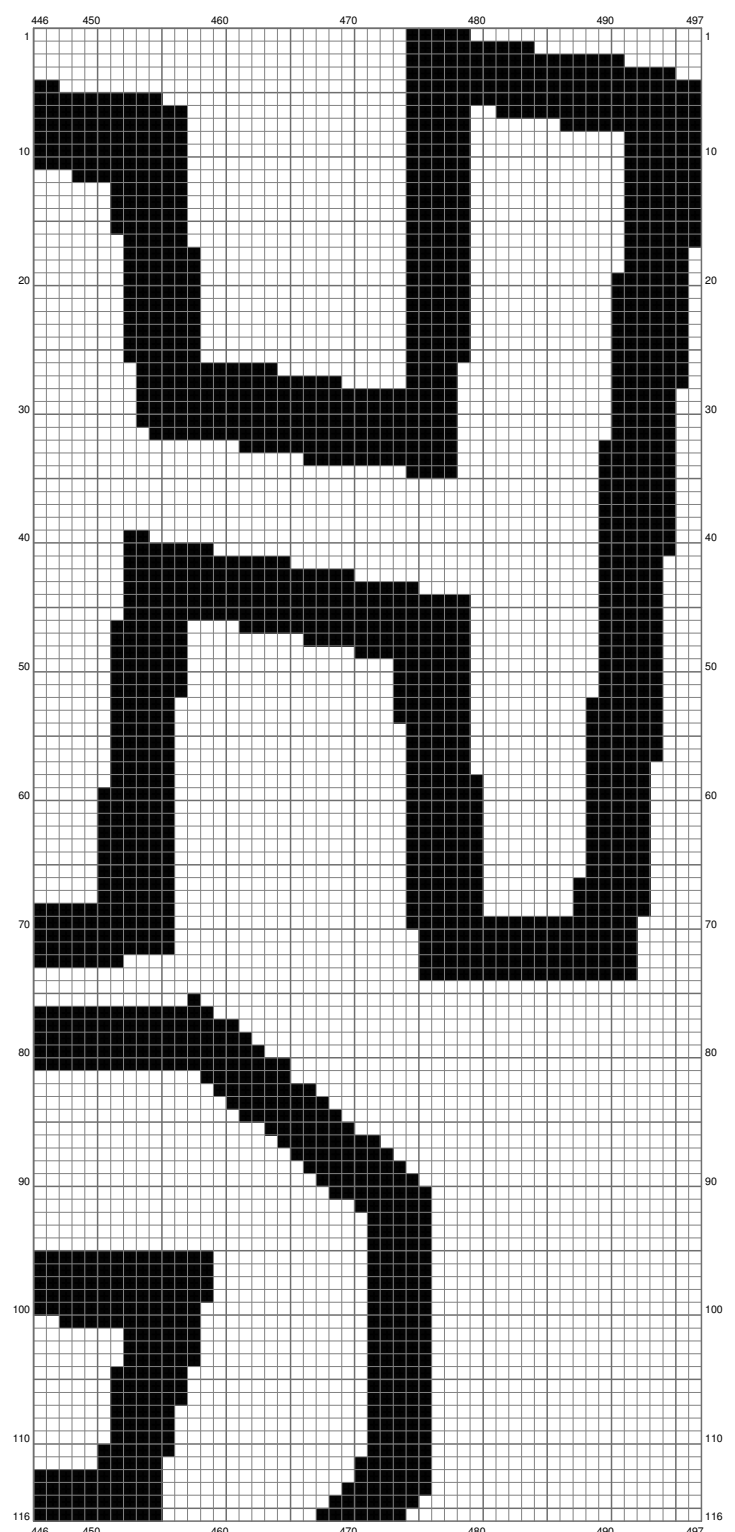
(This chart is printed using KG-Chart LE for Cross Stitch.)

**SMB Font**



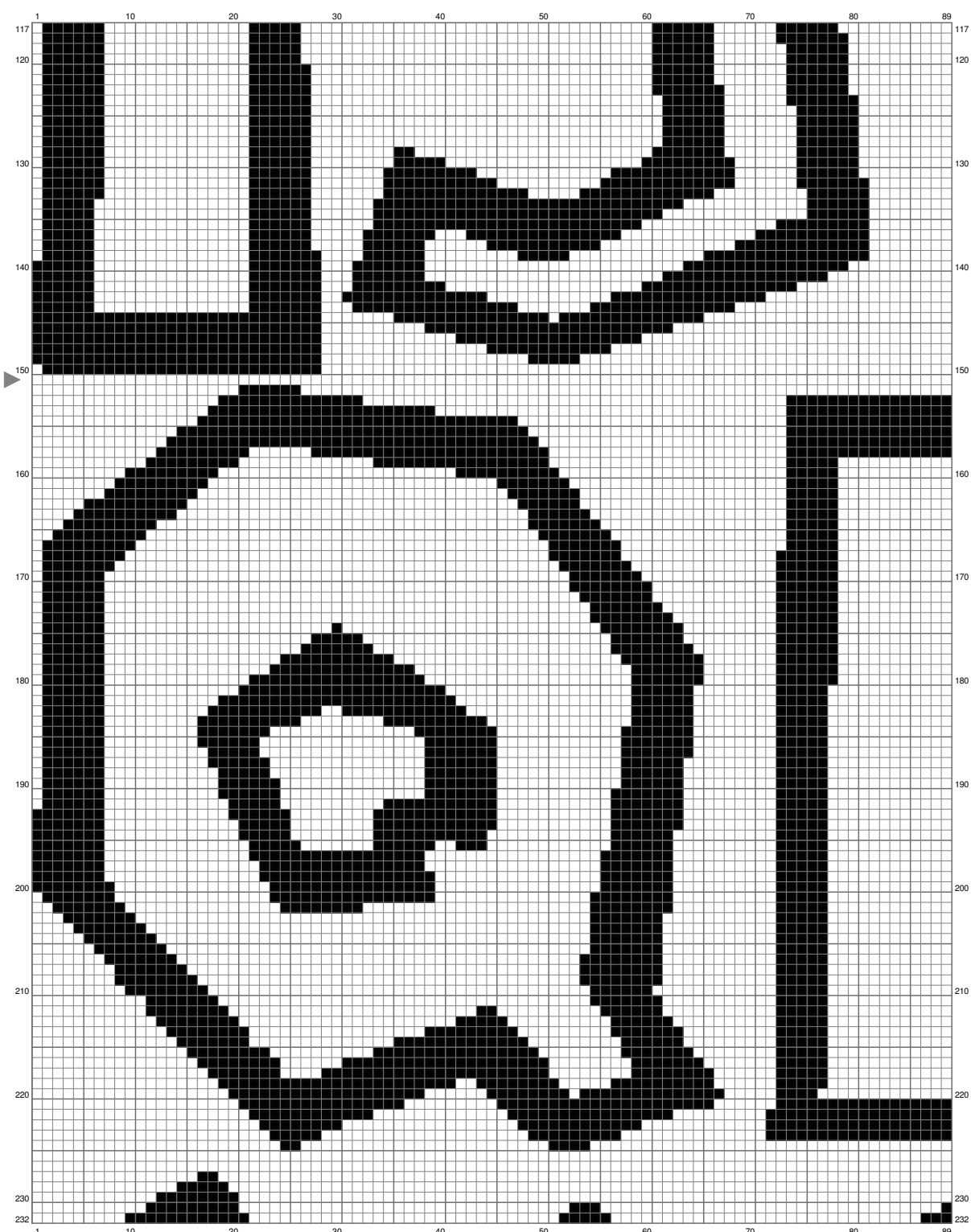
(This chart is printed using KG-Chart LE for Cross Stitch.)

**SMB Font**



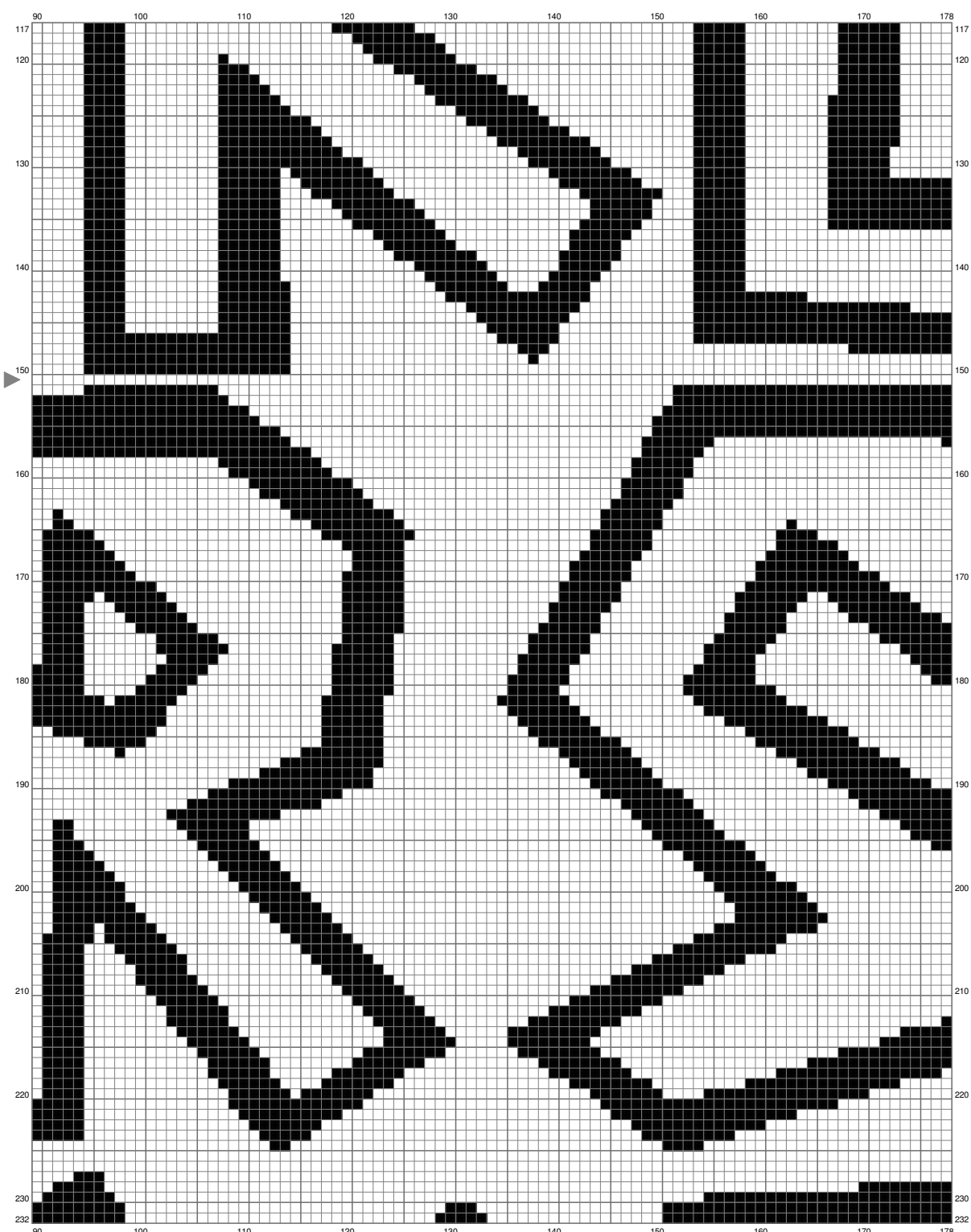
(This chart is printed using KG-Chart LE for Cross Stitch.)

SMB Font



(This chart is printed using KG-Chart LE for Cross Stitch.)

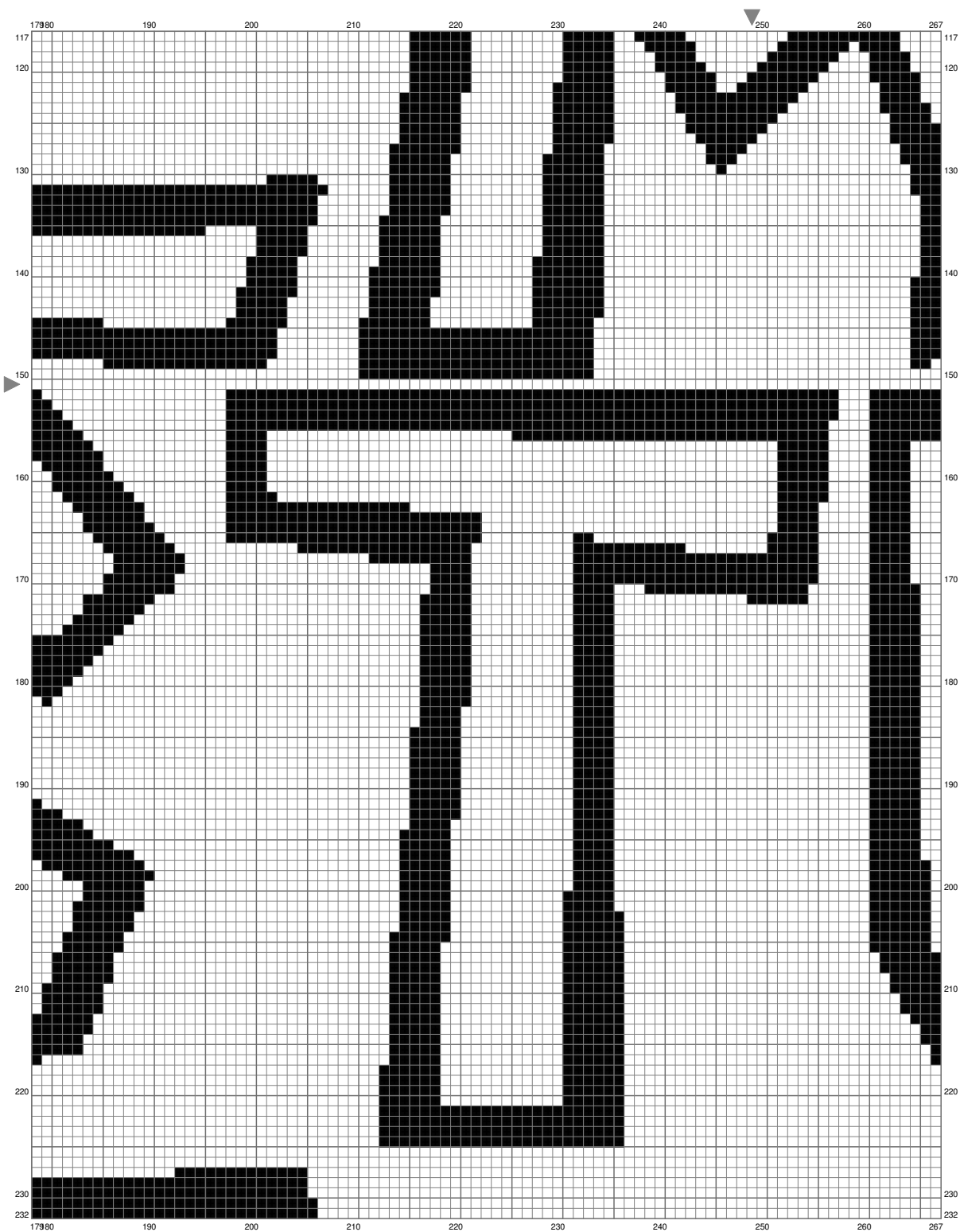
**SMB Font**



(This chart is printed using KG-Chart LE for Cross Stitch.)

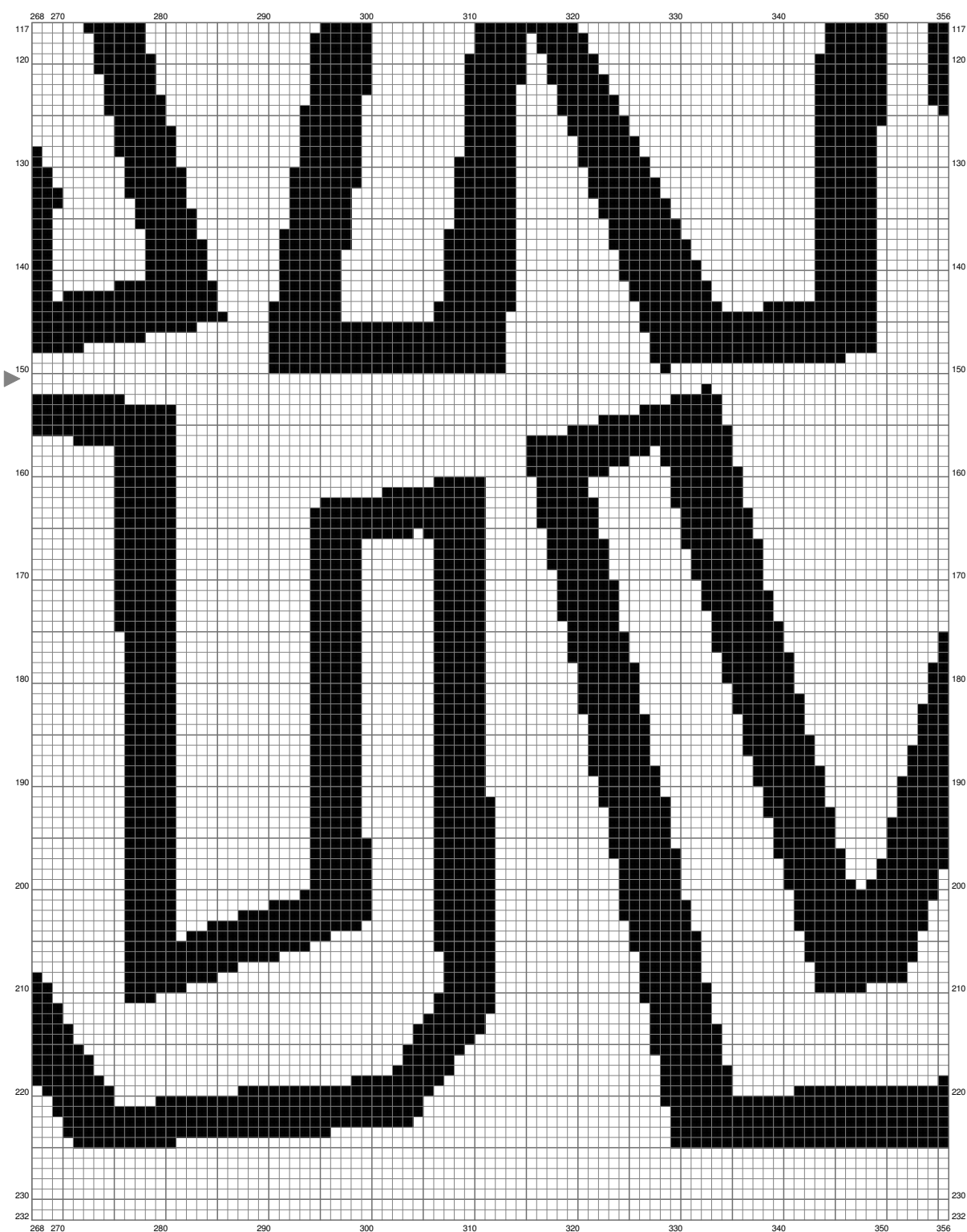


**SMB Font**



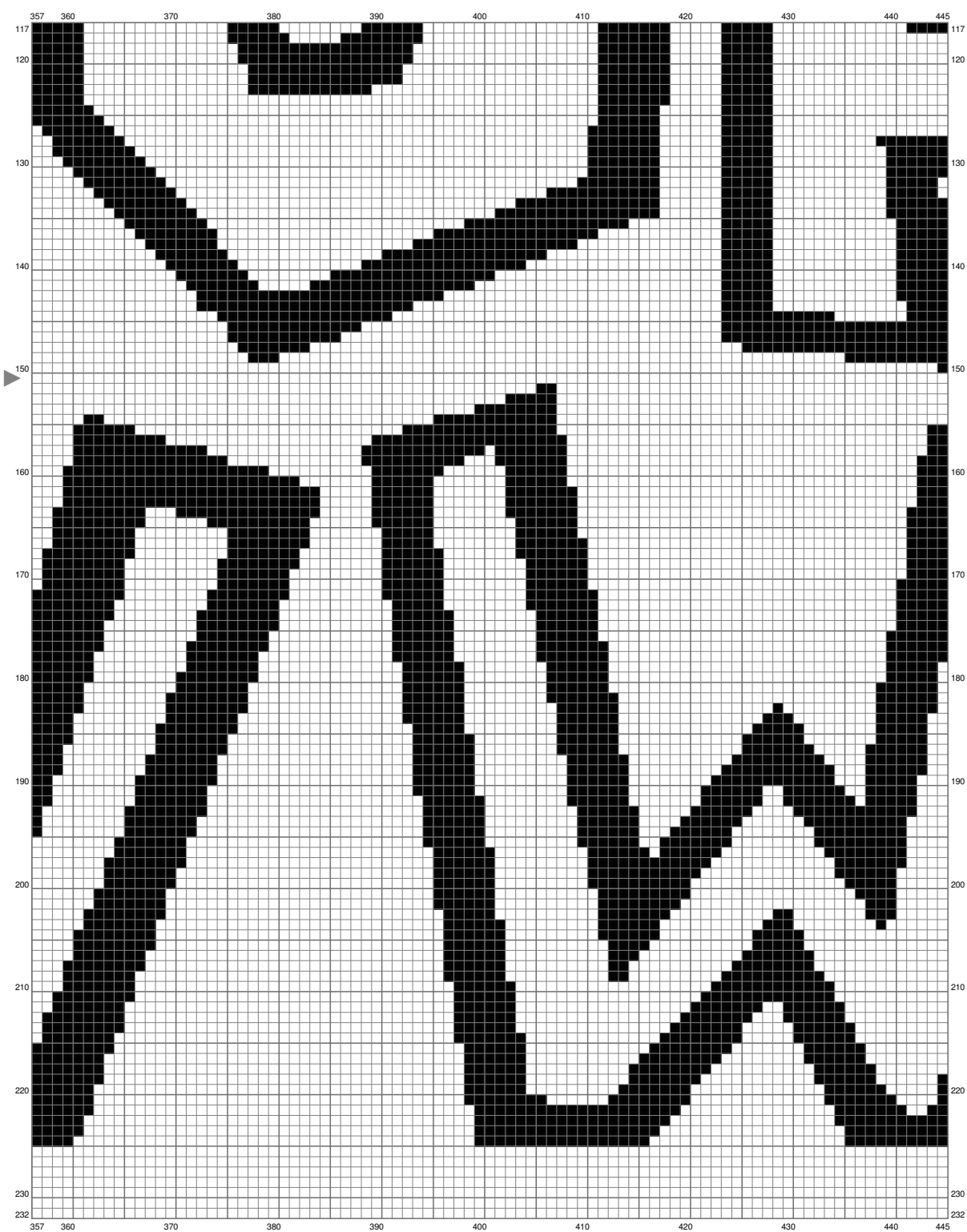
(This chart is printed using KG-Chart LE for Cross Stitch.)

# SMB Font



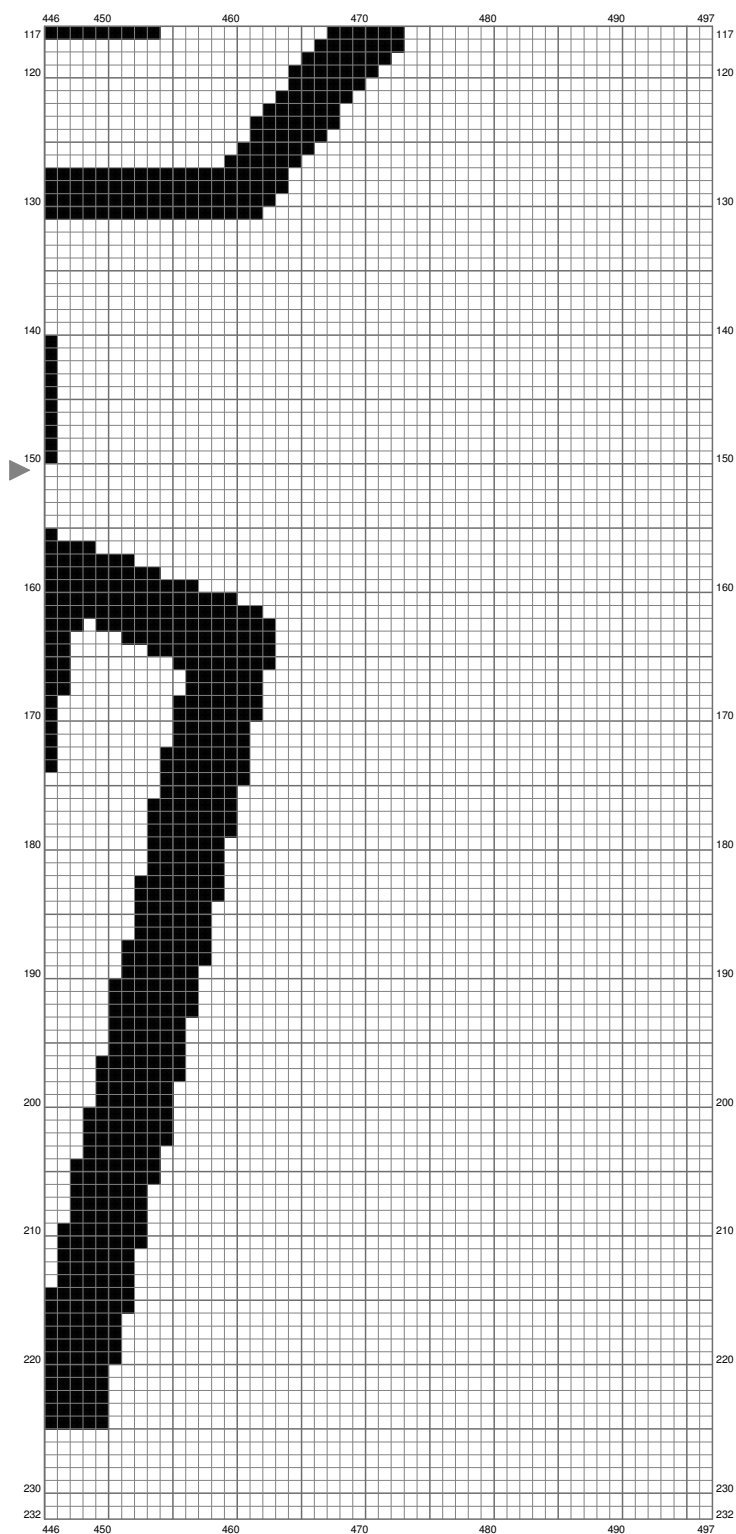
(This chart is printed using KG-Chart LE for Cross Stitch.)

**SMB Font**



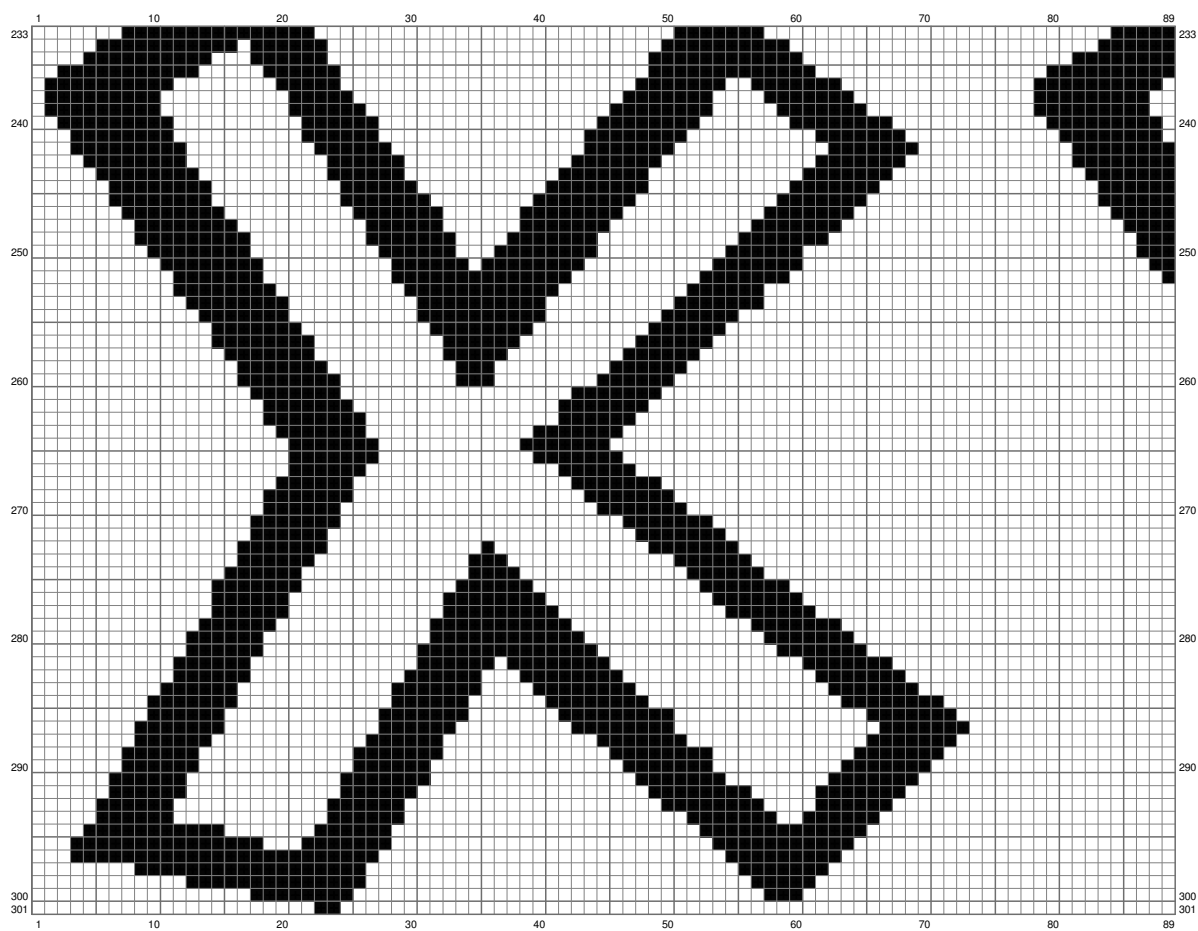
(This chart is printed using KG-Chart LE for Cross Stitch.)

# SMB Font

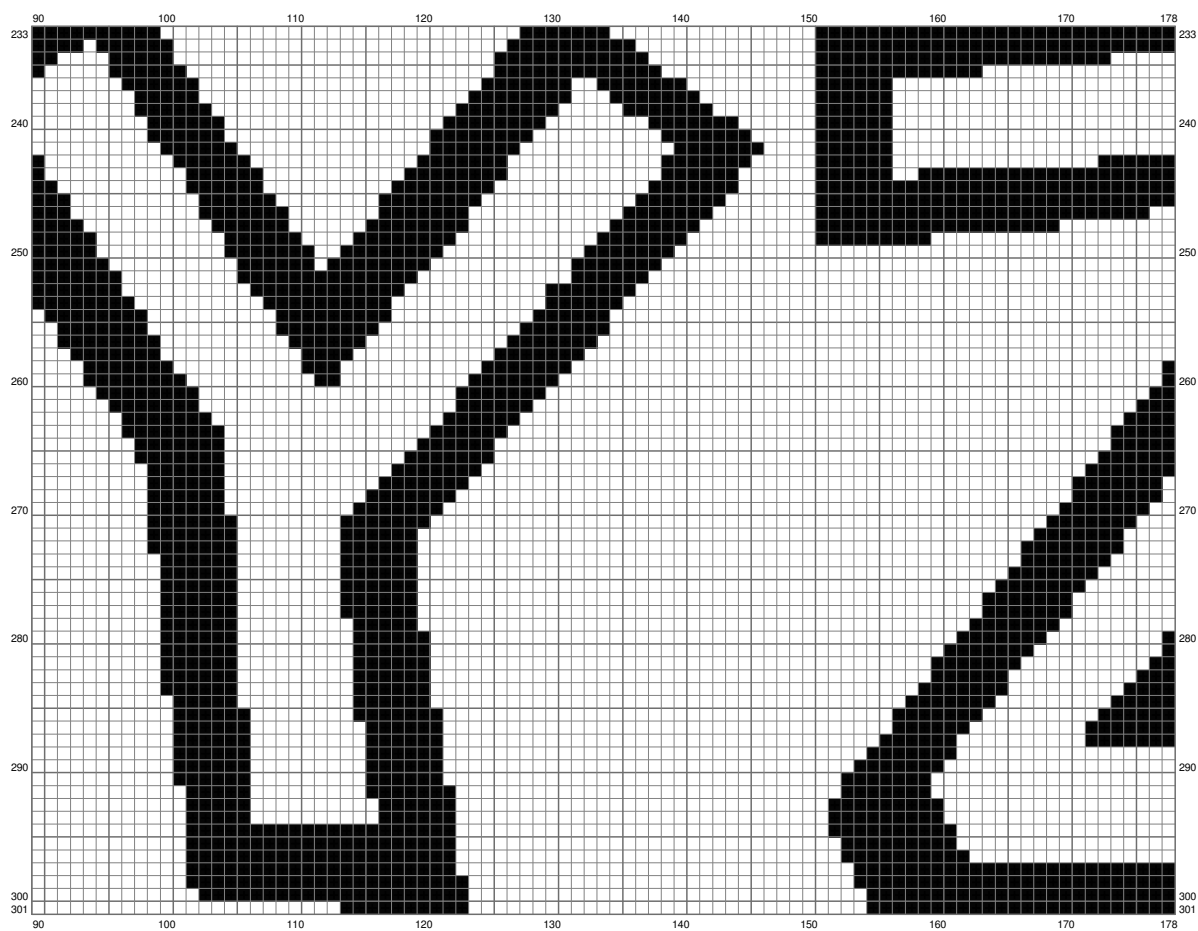


(This chart is printed using KG-Chart LE for Cross Stitch.)

## SMB Font

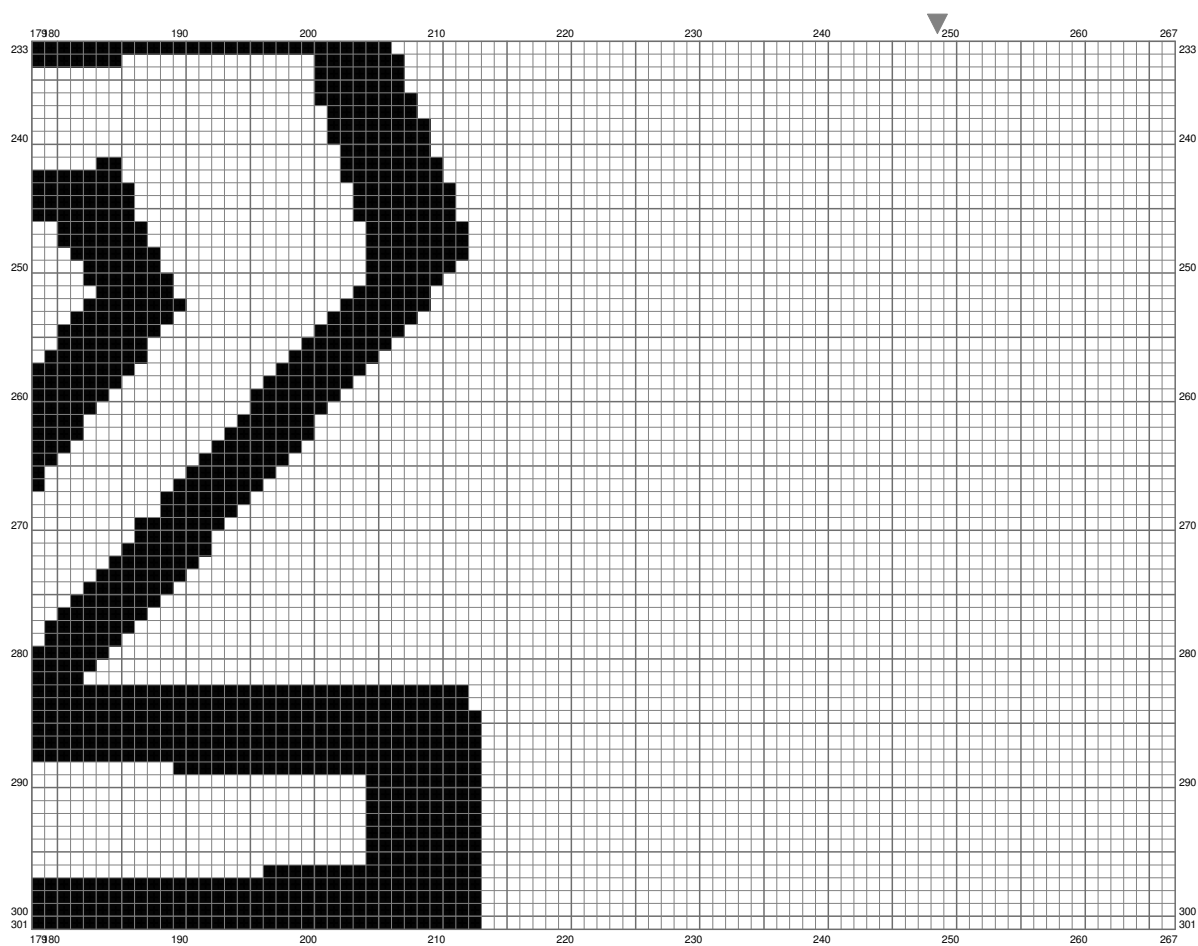


## SMB Font

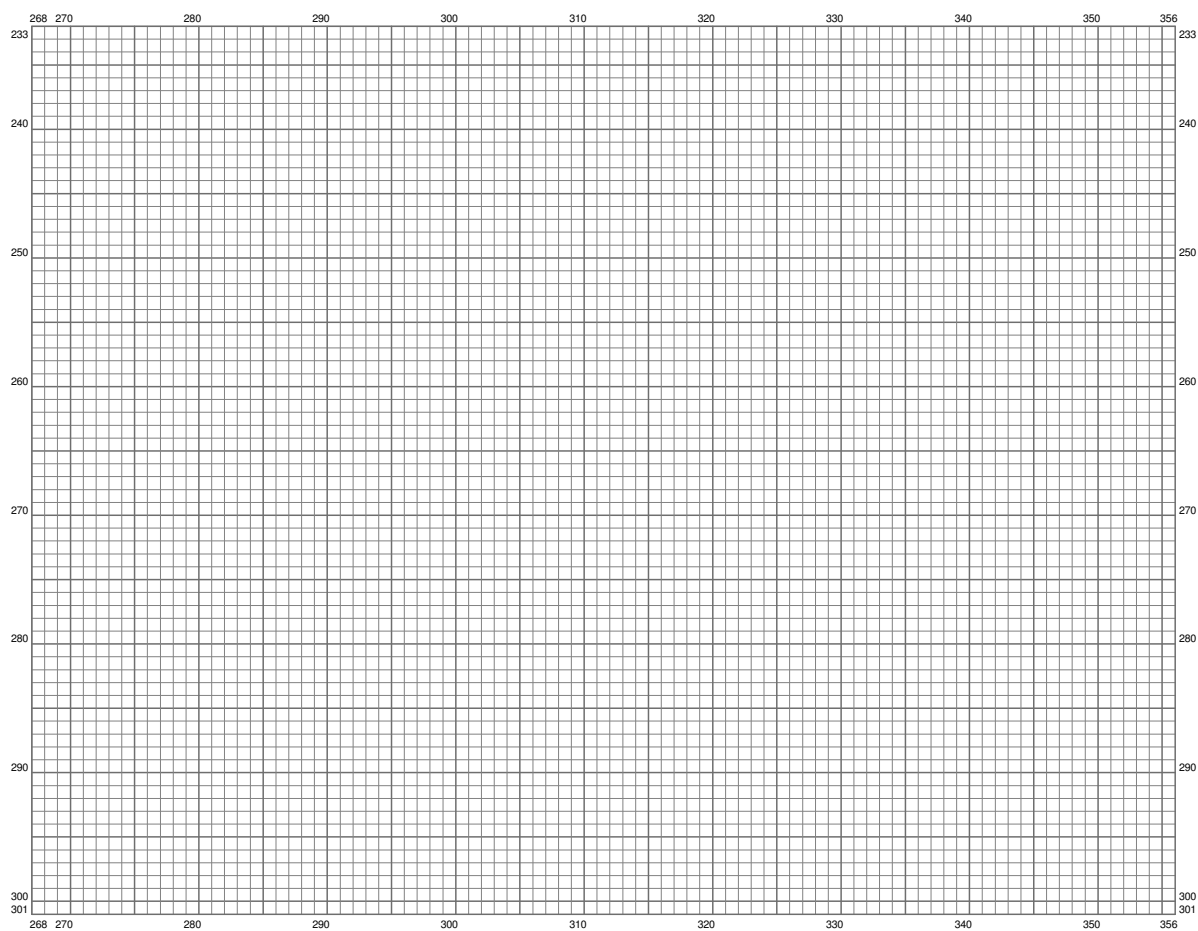


(This chart is printed using KG-Chart LE for Cross Stitch.)

## SMB Font



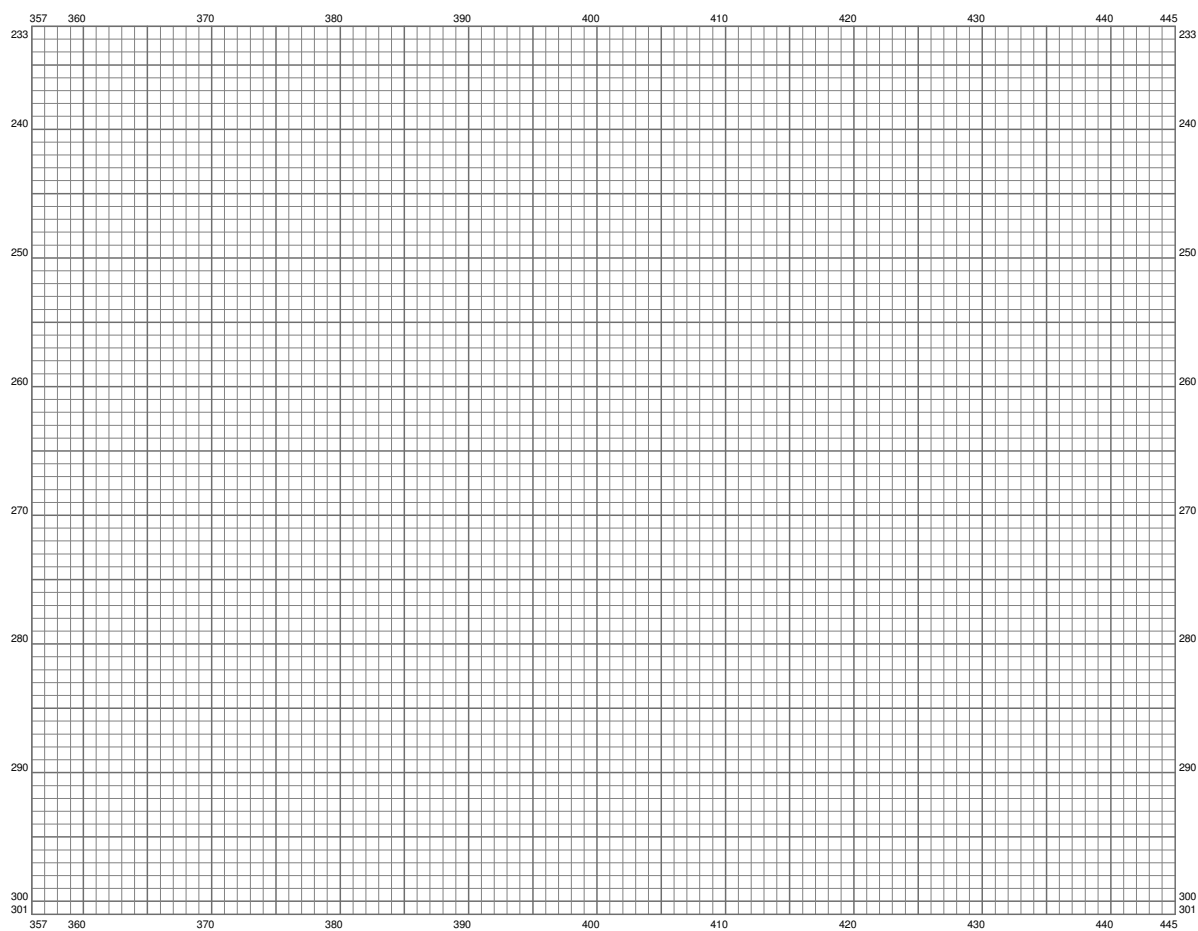
# SMB Font



(This chart is printed using KG-Chart LE for Cross Stitch.)

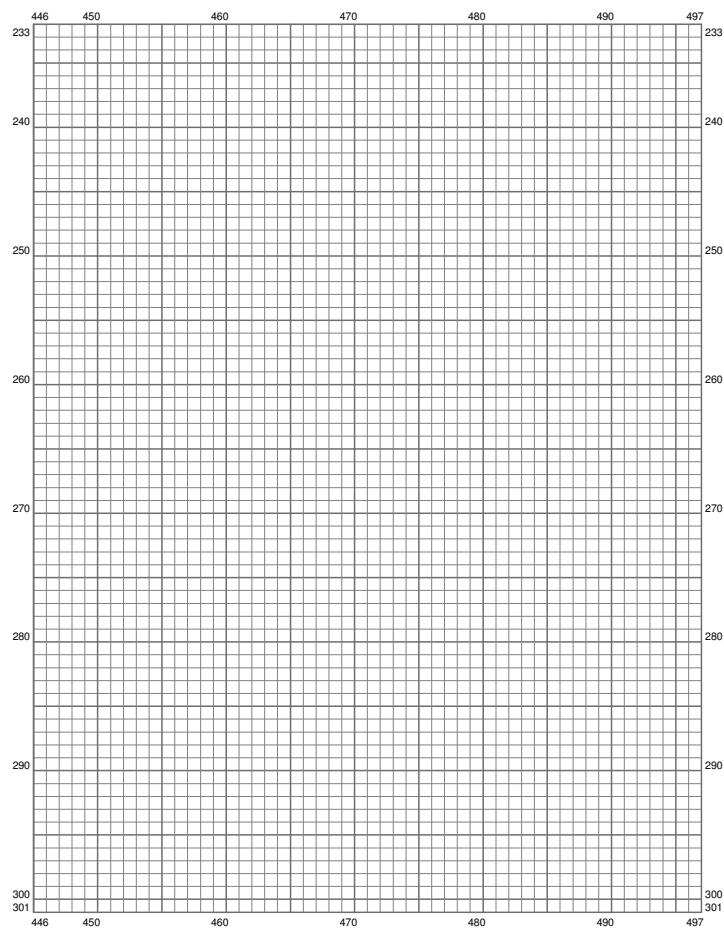


## SMB Font



(This chart is printed using KG-Chart LE for Cross Stitch.)

# SMB Font



(This chart is printed using KG-Chart LE for Cross Stitch.)

Stitch Count: 497w x 301h  
Finished Size: 140.26 cm x 84.94 cm (18 ct./inch)  
Cloth: Linen  
Cloth's Color: White  
# of colors: 1 Colors

Color Table (DMC)

**Cross Stitch**  
■ 310 (41403 ct)