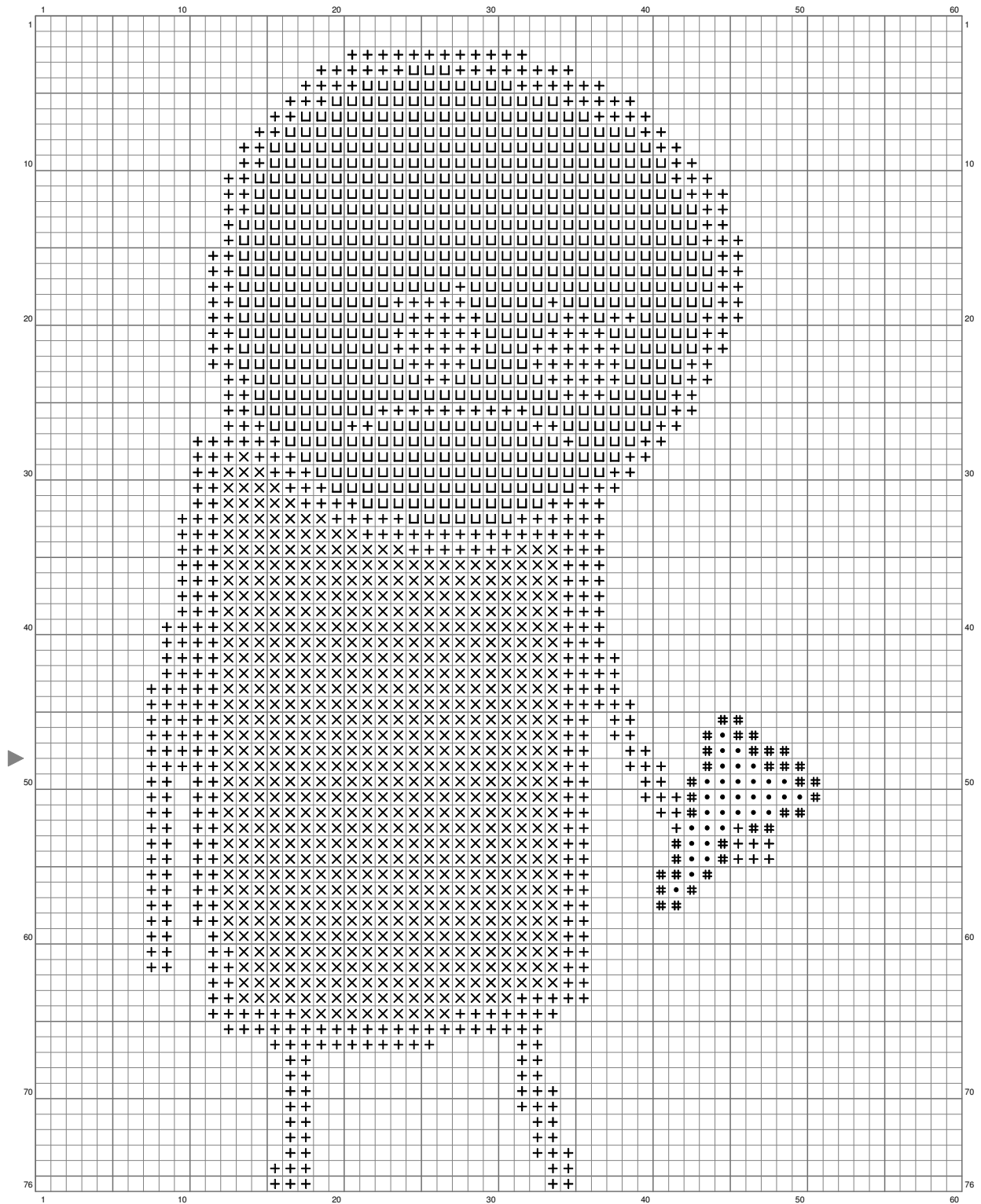
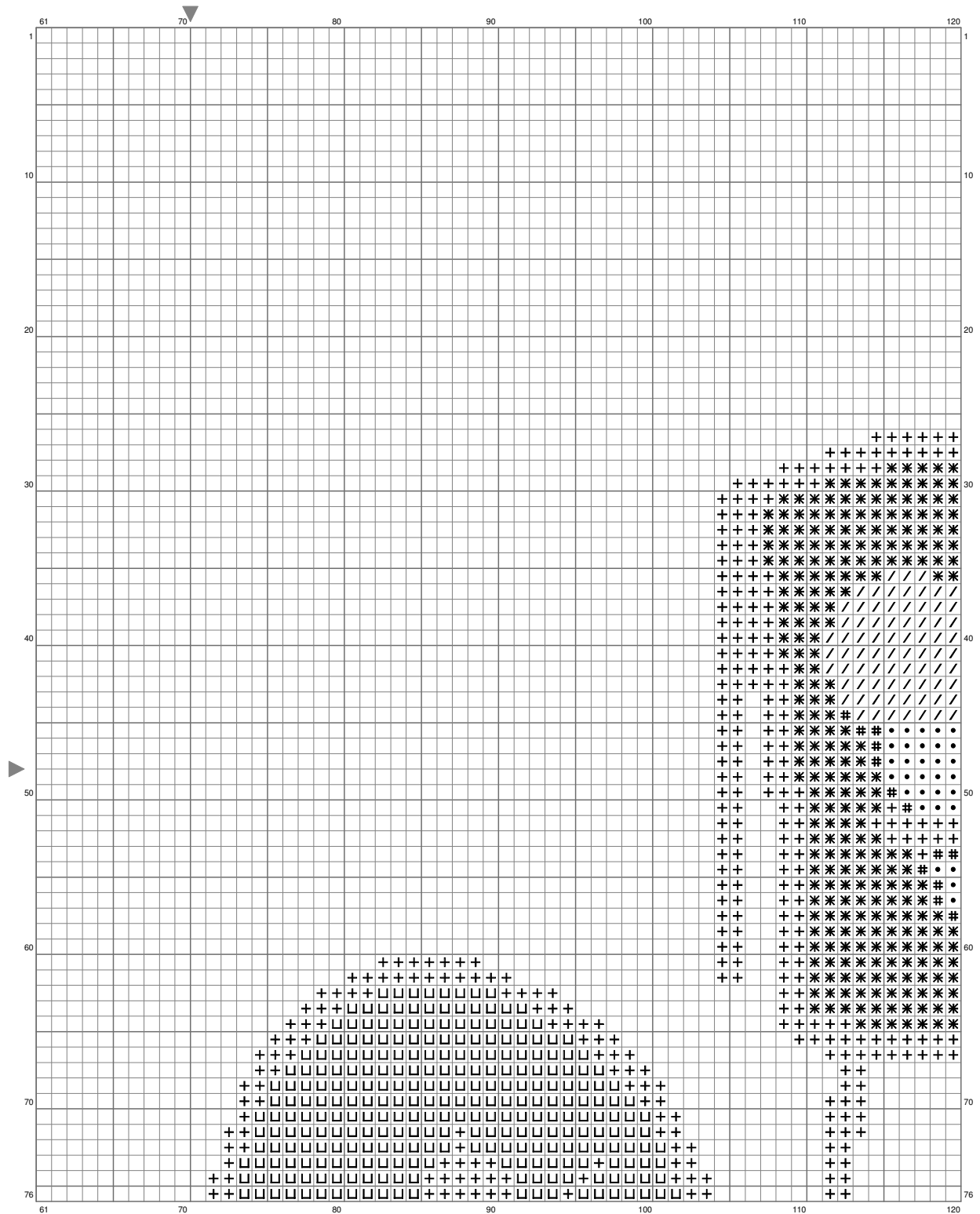


Untitled



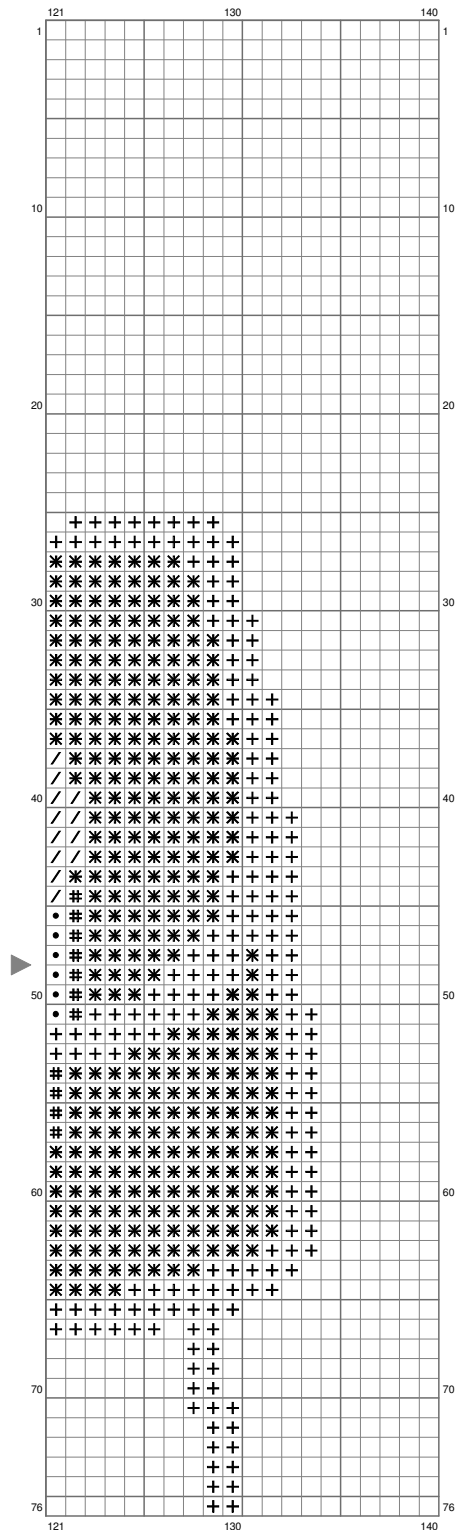
(This chart is printed using KG Chart LE for Cross Stitch.)

Untitled



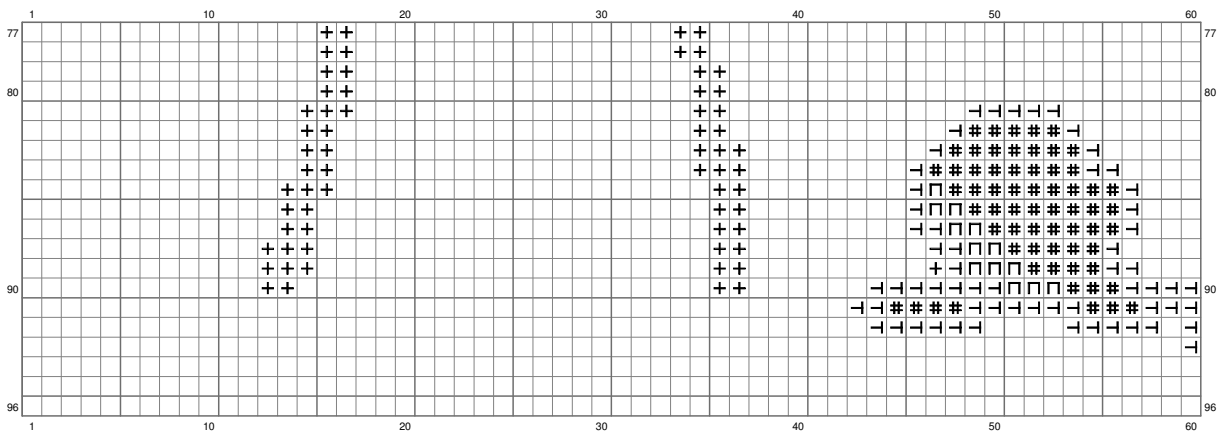
(This chart is printed using KG Chart LE for Cross Stitch.)

Untitled

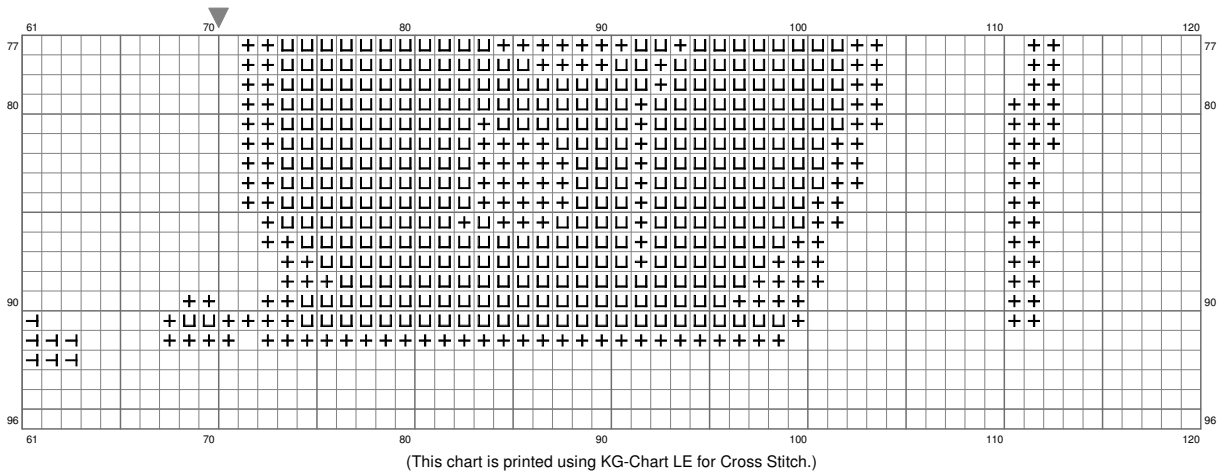


(This chart is printed using KG Chart LE for Cross Stitch.)

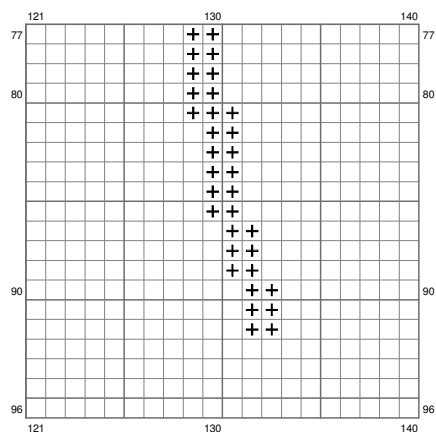
Untitled



Untitled



Untitled



(This chart is printed using KG-Chart LE for Cross Stitch.)

Stitch Count: 140w x 96h

Finished Size: 39.51 cm x 27.09 cm (18 ct./inch)

Cloth: Aida

Cloth's Color: White

of colors: 9 Colors

Color Table (DMC)

Cross Stitch

+	310	(1381 ct)
X	906	(685 ct)
*	3810	(587 ct)
#	730	(121 ct)
●	3852	(70 ct)
□	3827	(1275 ct)
/	744	(88 ct)
└	869	(67 ct)
┐	831	(13 ct)