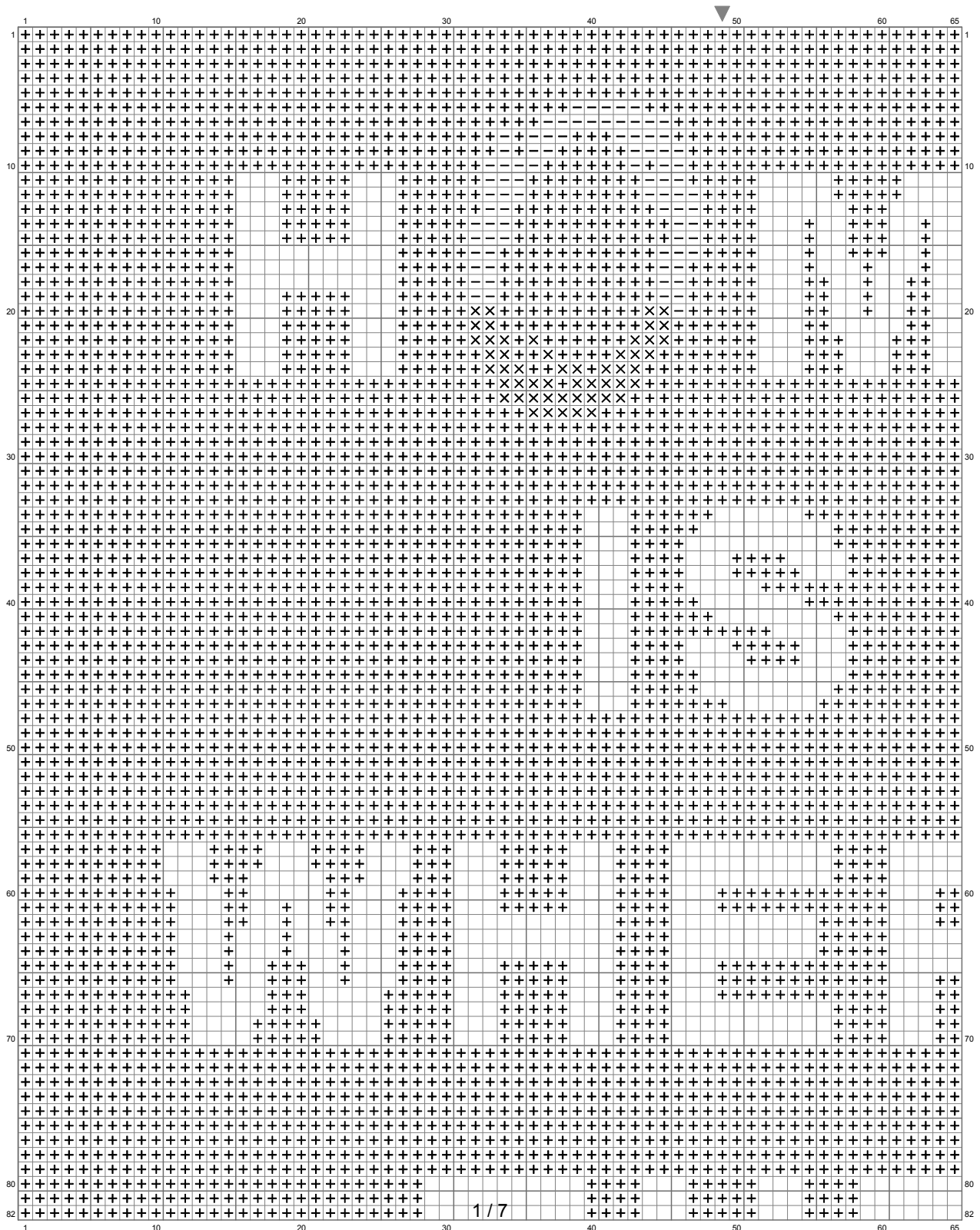
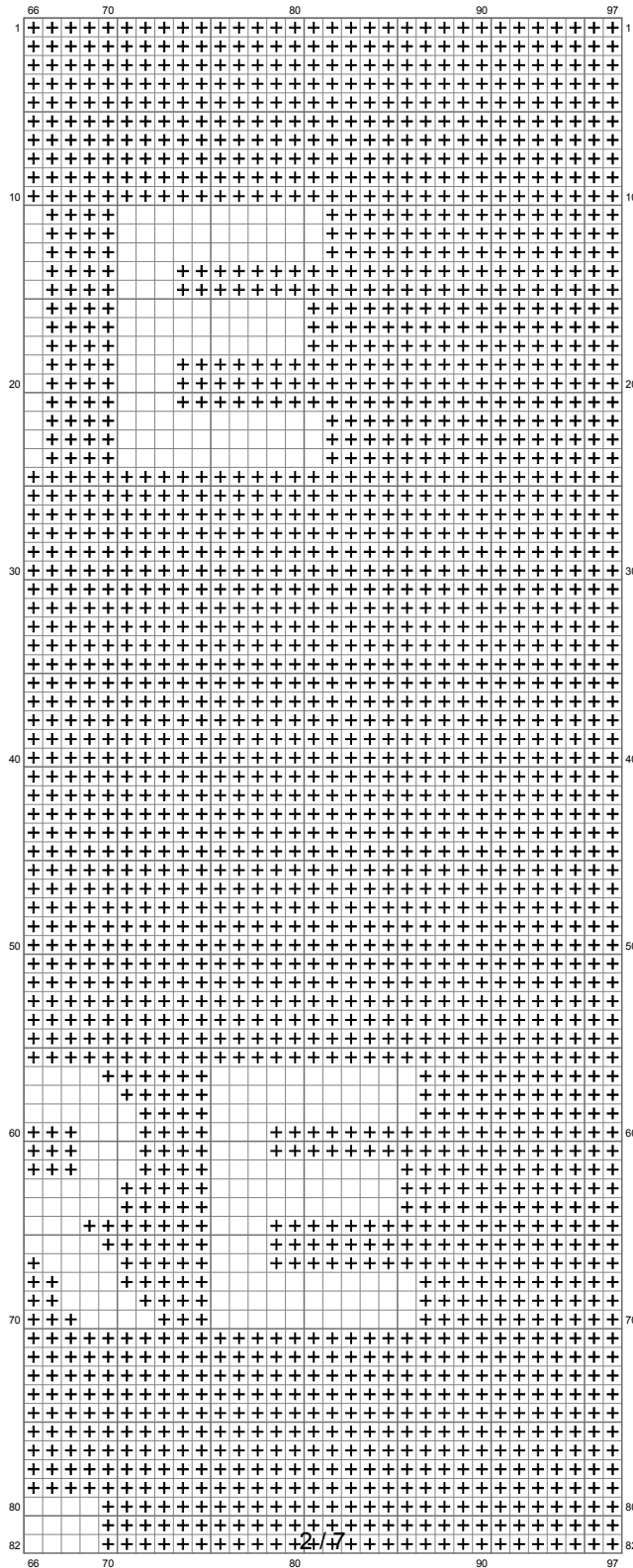


Home



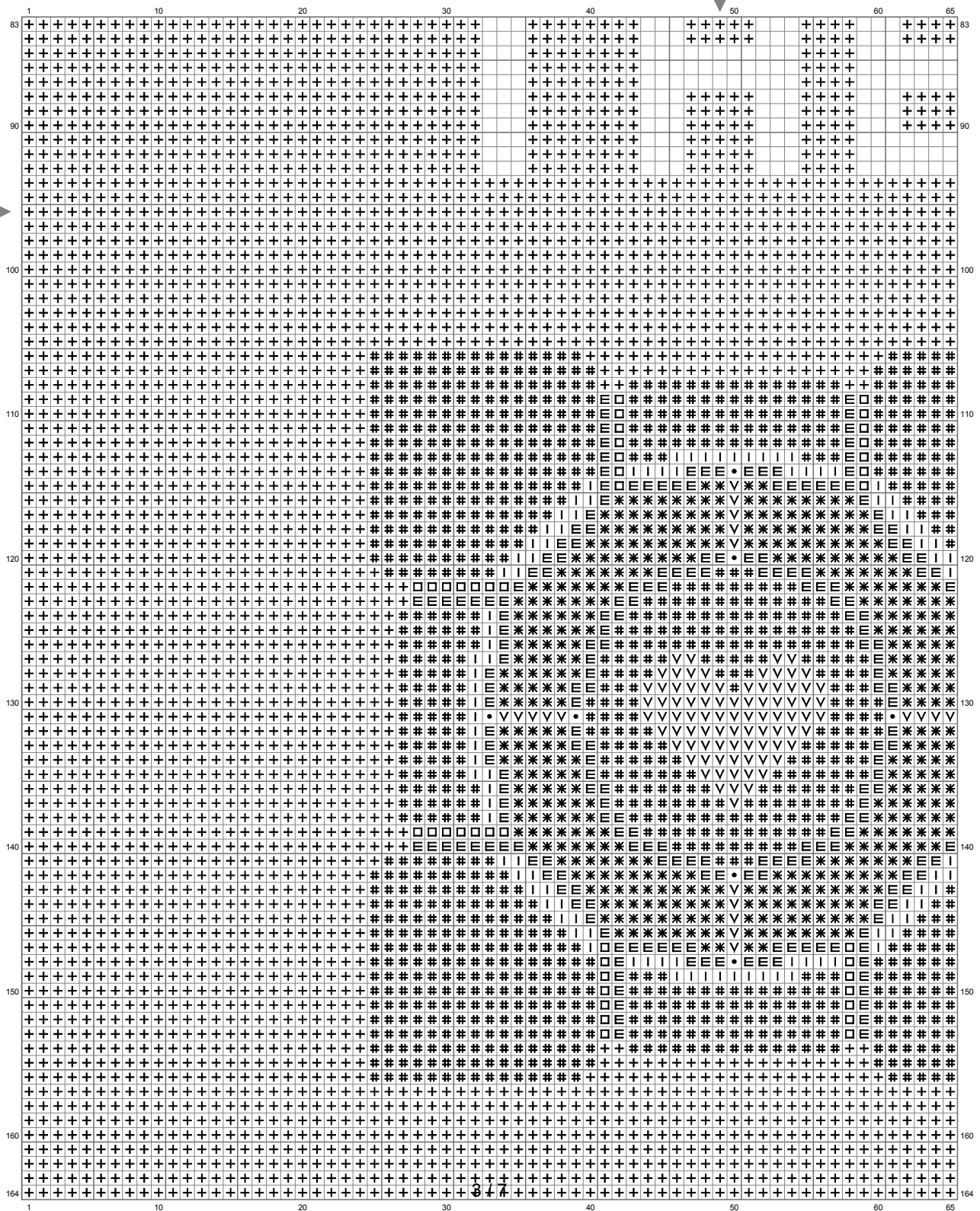
(This chart is printed using KG-Chart LE for Cross Stitch.)

Home



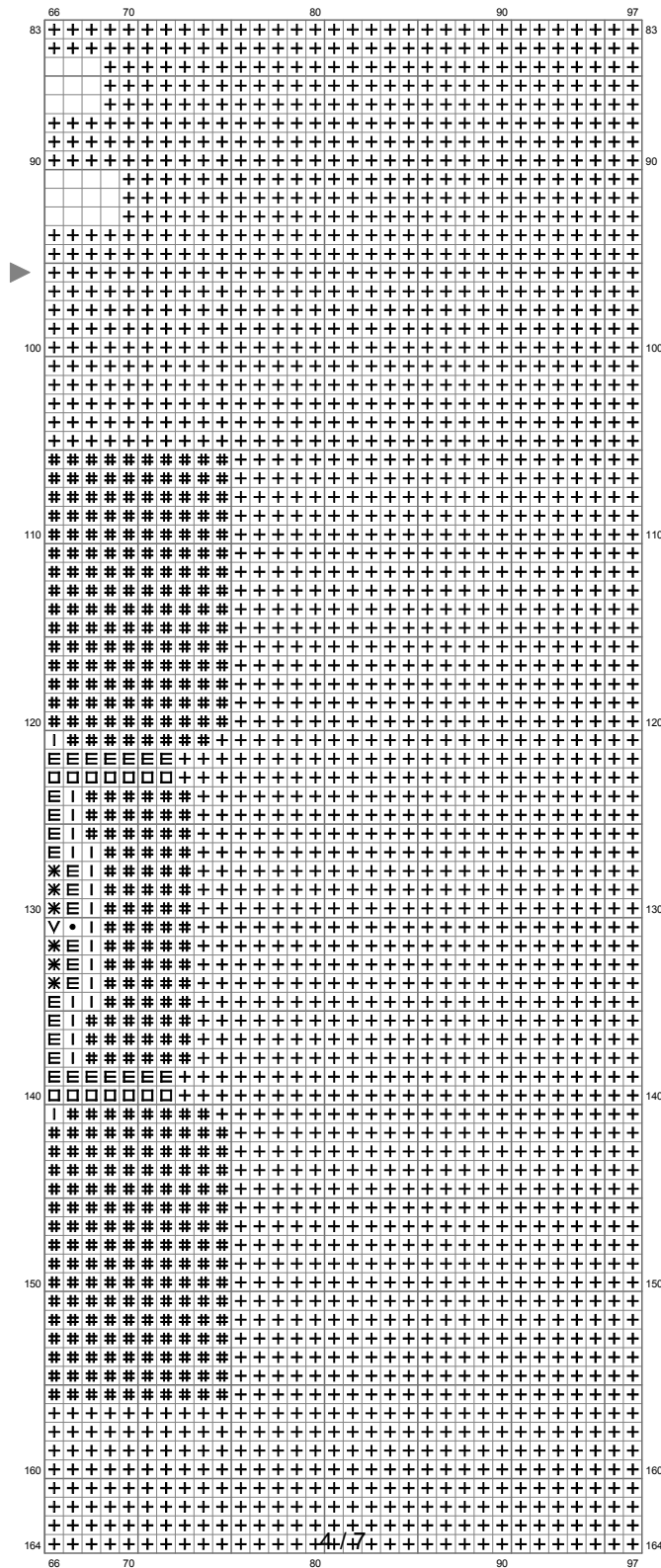
(This chart is printed using KG-Chart LE for Cross Stitch.)

Home



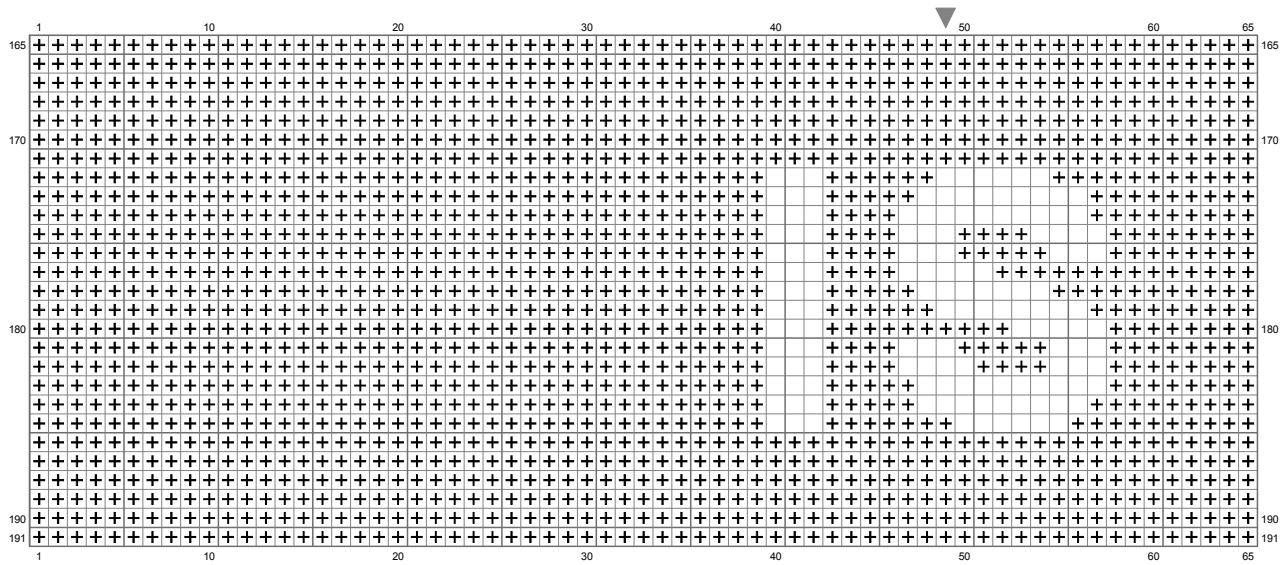
(This chart is printed using KG-Chart LE for Cross Stitch.)

Home

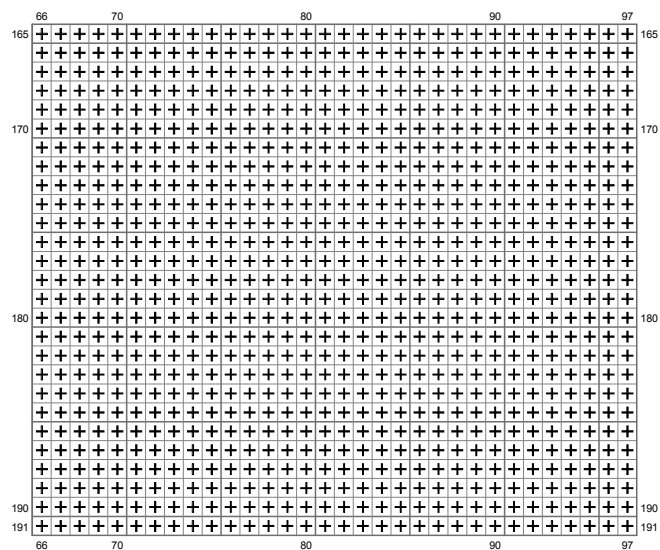


(This chart is printed using KG-Chart LE for Cross Stitch.)

Home



Home



(This chart is printed using KG-Chart LE for Cross Stitch.)

Home

Stitch Count:97w x 191h











Cloth:Aida Cloth's Color:White

Finished Size:27.37 cm x 53.90 cm (18 ct./inch)

Total 10 Colors

Color Table (DMC)

Cross Stitch

	310	(14483 ct)
	935	(244 ct)
	3787	(56 ct)
	3844	(82 ct)
	3843	(52 ct)
	640	(424 ct)
	3022	(120 ct)
	3023	(1467 ct)
	3705	(8 ct)
	3706	(106 ct)