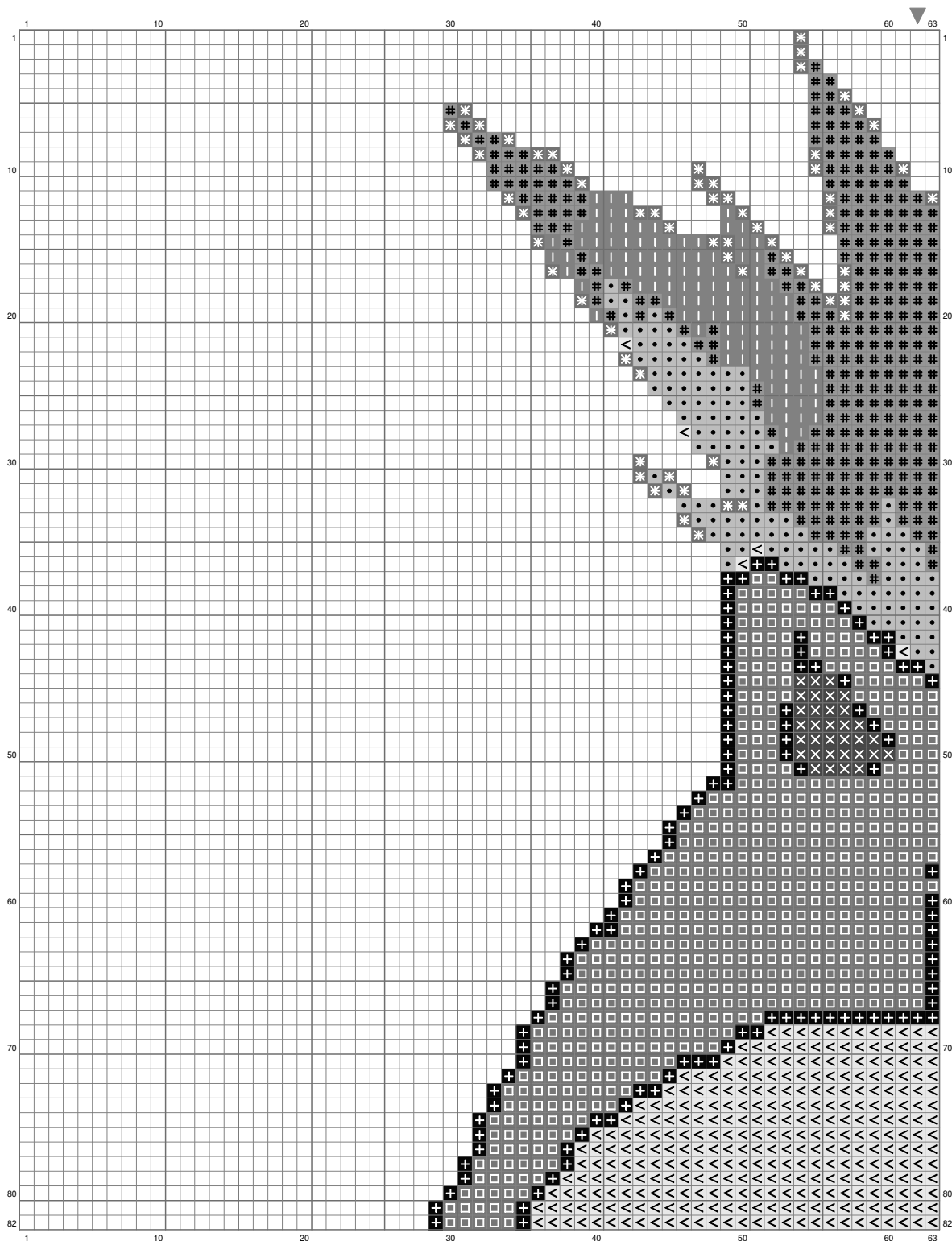
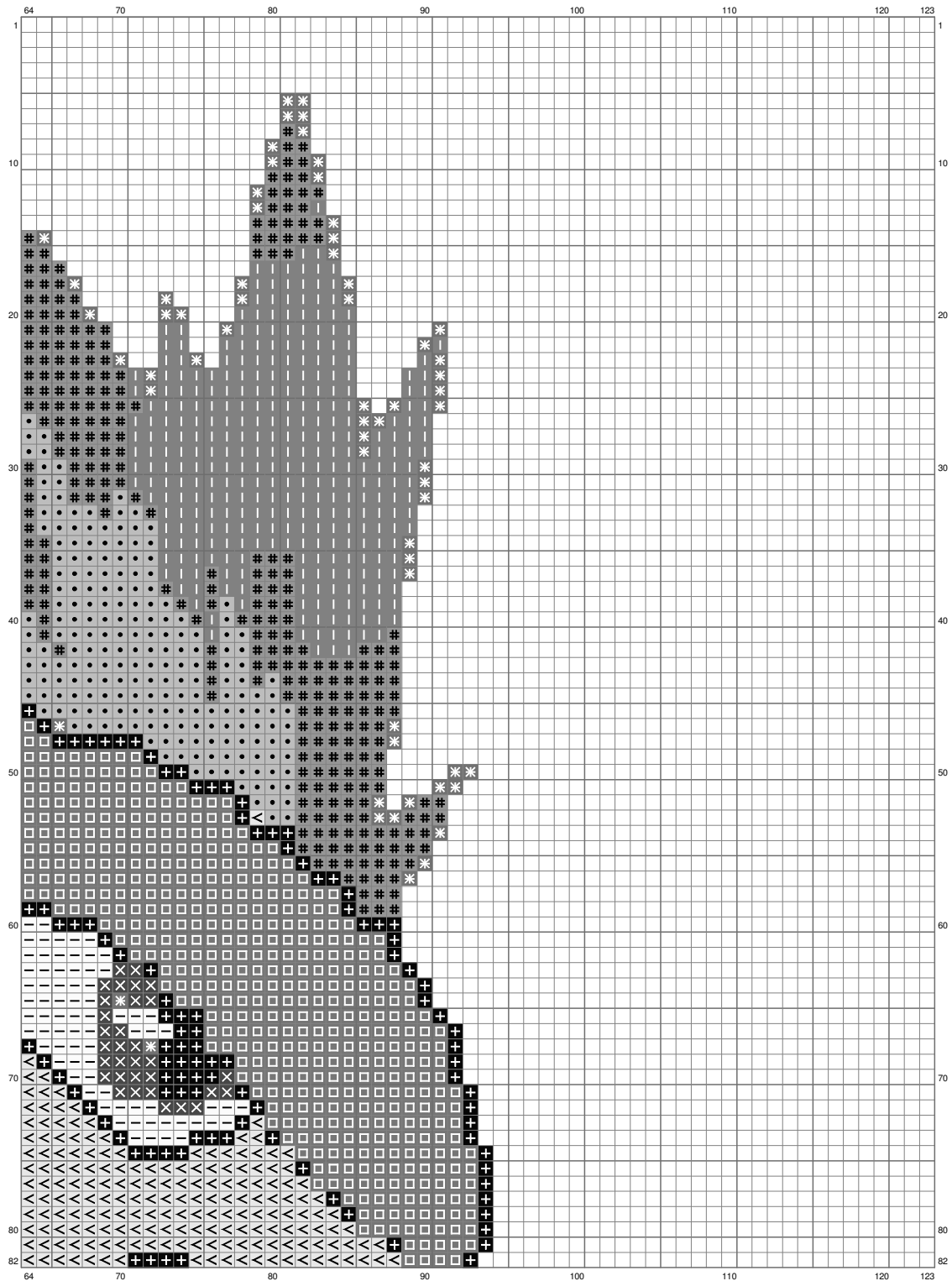


# Quilava



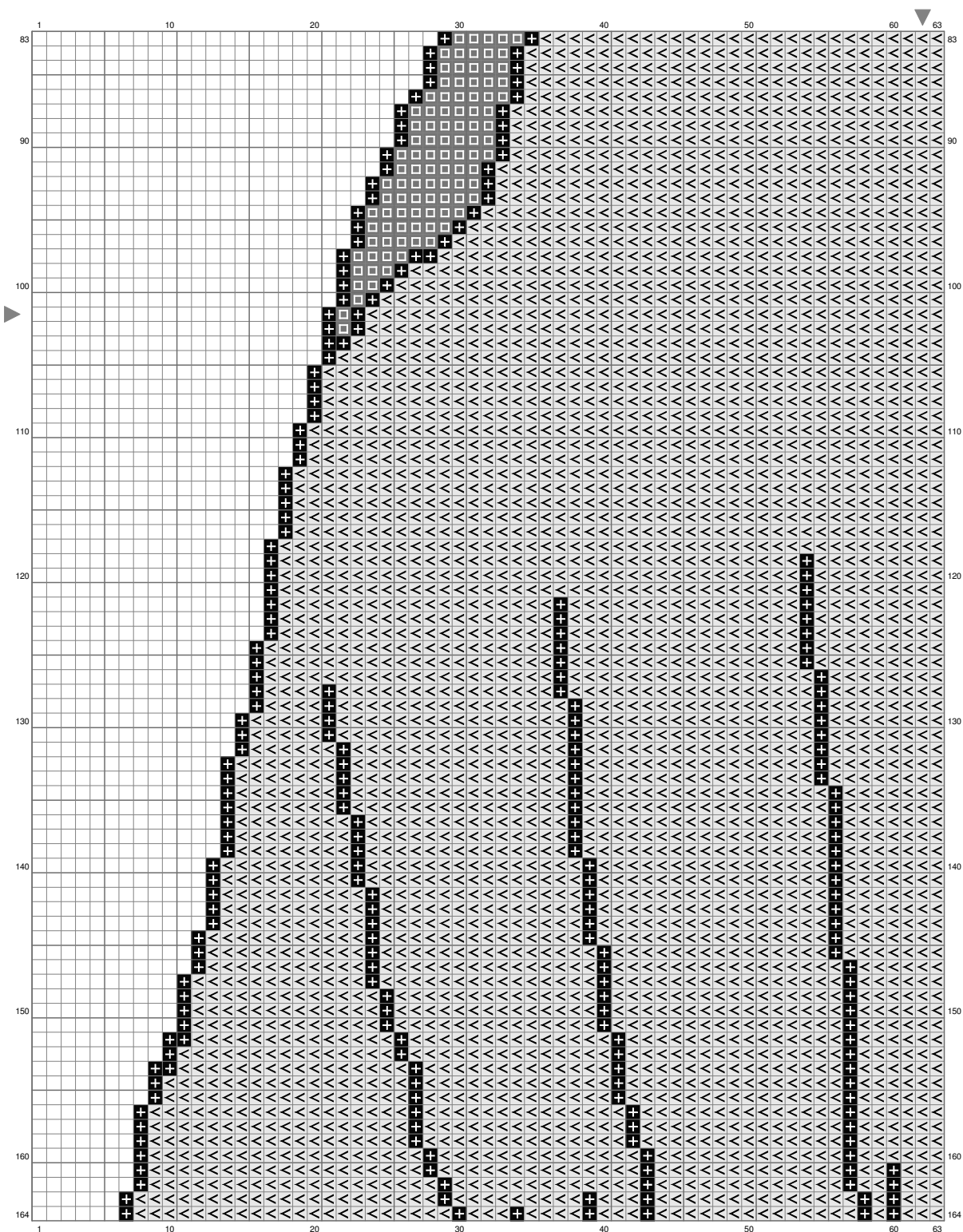
(This chart is printed using KG-Chart LE for Cross Stitch.)

# Quilava



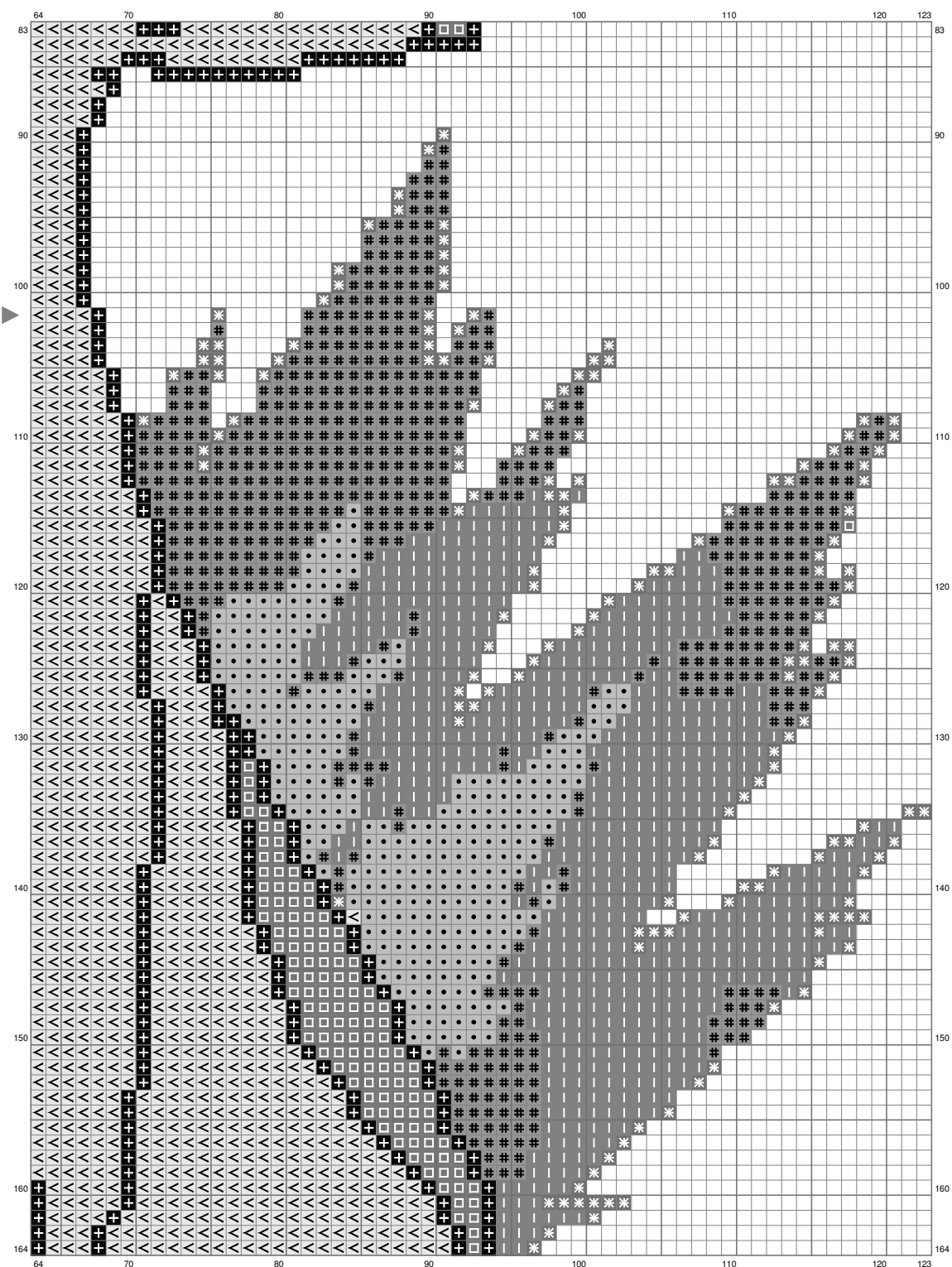
(This chart is printed using KG-Chart LE for Cross Stitch.)

# Quilava



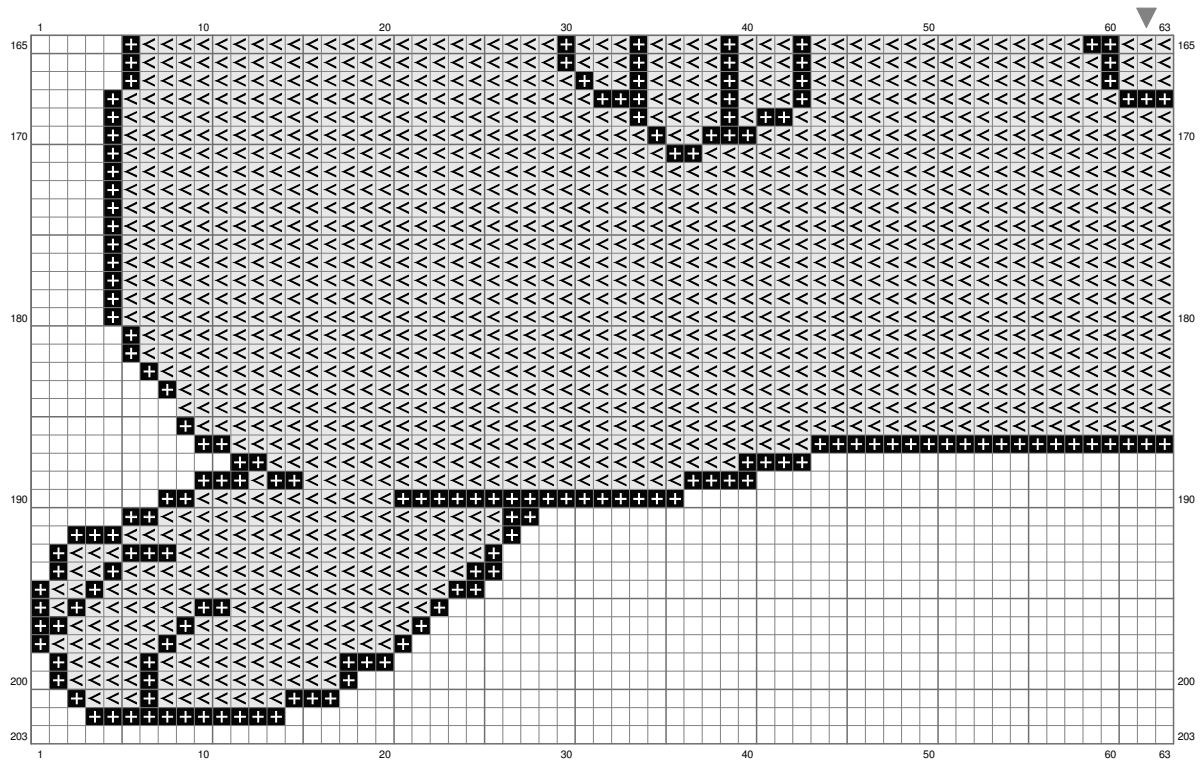
(This chart is printed using KG-Chart LE for Cross Stitch.)

# Quilava

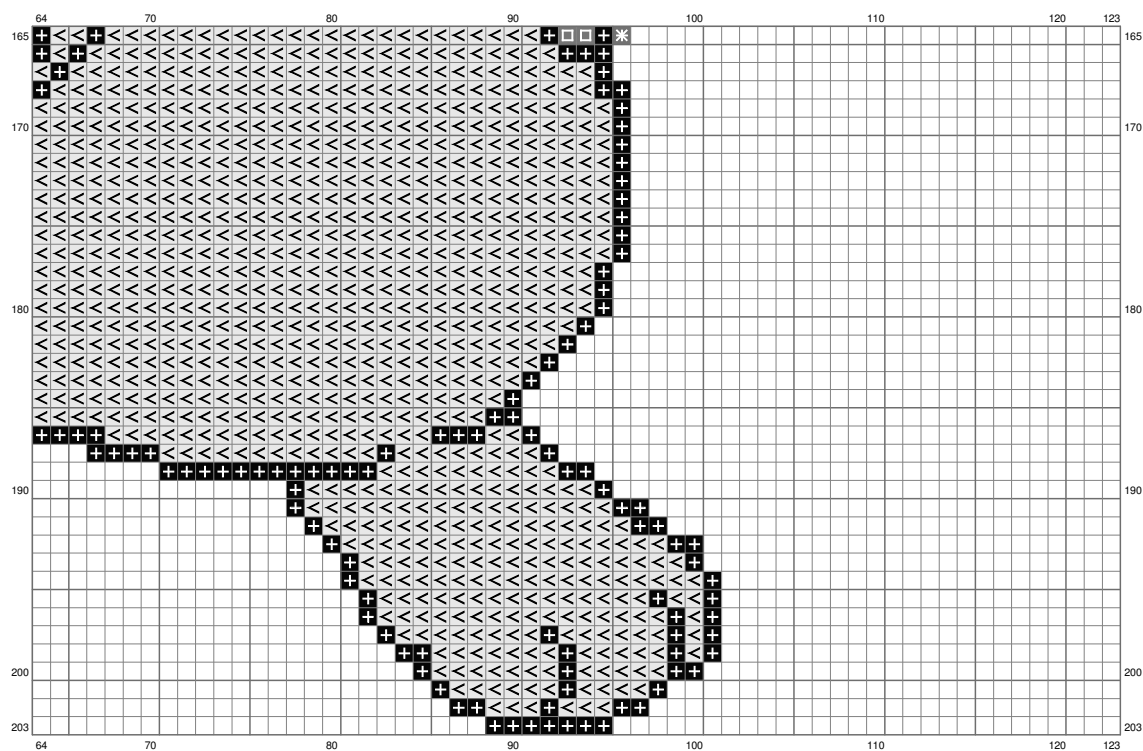


(This chart is printed using KG-Chart LE for Cross Stitch.)

# Quilava



# Quilava



(This chart is printed using KG-Chart LE for Cross Stitch.)

Stitch Count:123w x 203h // Cloth:Aida Cloth's Color:White

Finished Size:34.71 cm x 57.29 cm (18 ct./inch) // Total 9 Colors

## Color Table (DMC)

### Cross Stitch

	3777	(65 ct)
	BLANC	(75 ct)
	434	(291 ct)
	972	(674 ct)
	310	(933 ct)
	946	(1113 ct)
	3853	(1178 ct)
	3768	(1242 ct)
	744	(7349 ct)