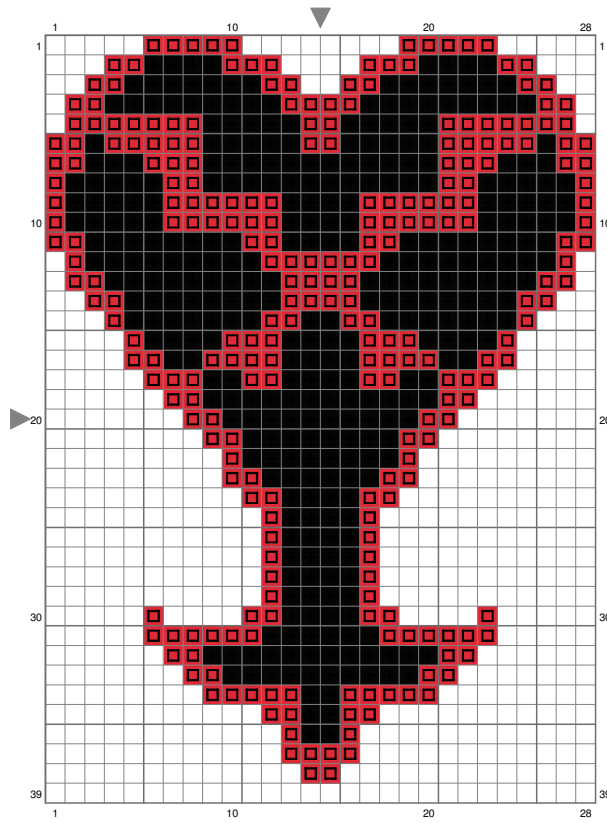


KH - Heartless Emblem



(This chart is printed using KG-Chart LE for Cross Stitch.)

Stitch Count: 28w x 39h

Finished Size: 10.16 cm x 14.15 cm (14 ct./inch)

Cloth: Aida

Cloth's Color: White

of colors: 2 Colors

Color Table (DMC)

Cross Stitch

■	310	(352 ct)
■	666	(260 ct)