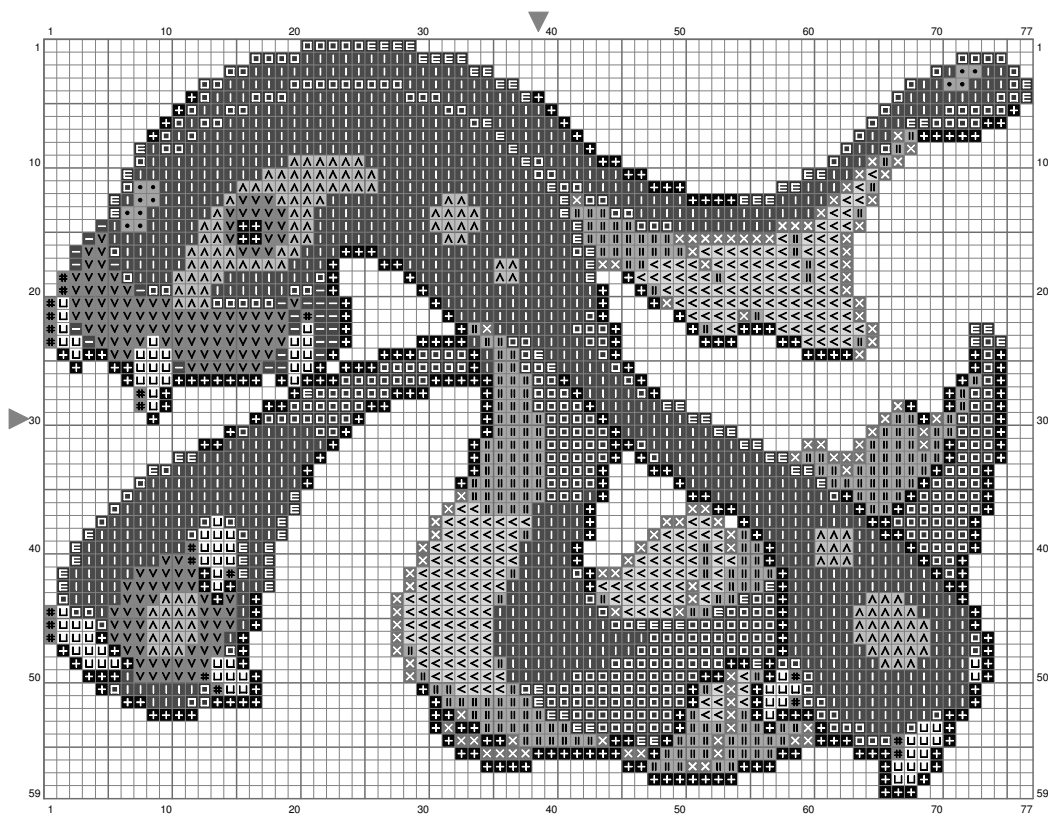


Shibirudon



(This chart is printed using KG-Chart LE for Cross Stitch.)

Stitch Count:77w x 59h // Cloth:Aida Cloth's Color:White

Finished Size:21.73 cm x 16.65 cm (18 ct./inch) // Total 13 Colors

Color Table (DMC)

Cross Stitch

	BLANC	(79 ct)
	165	(249 ct)
	310	(337 ct)
	372	(224 ct)
	500	(379 ct)
	518	(12 ct)
	640	(21 ct)
	830	(109 ct)
	890	(95 ct)
	920	(154 ct)
	972	(137 ct)
	3777	(26 ct)
	3842	(975 ct)