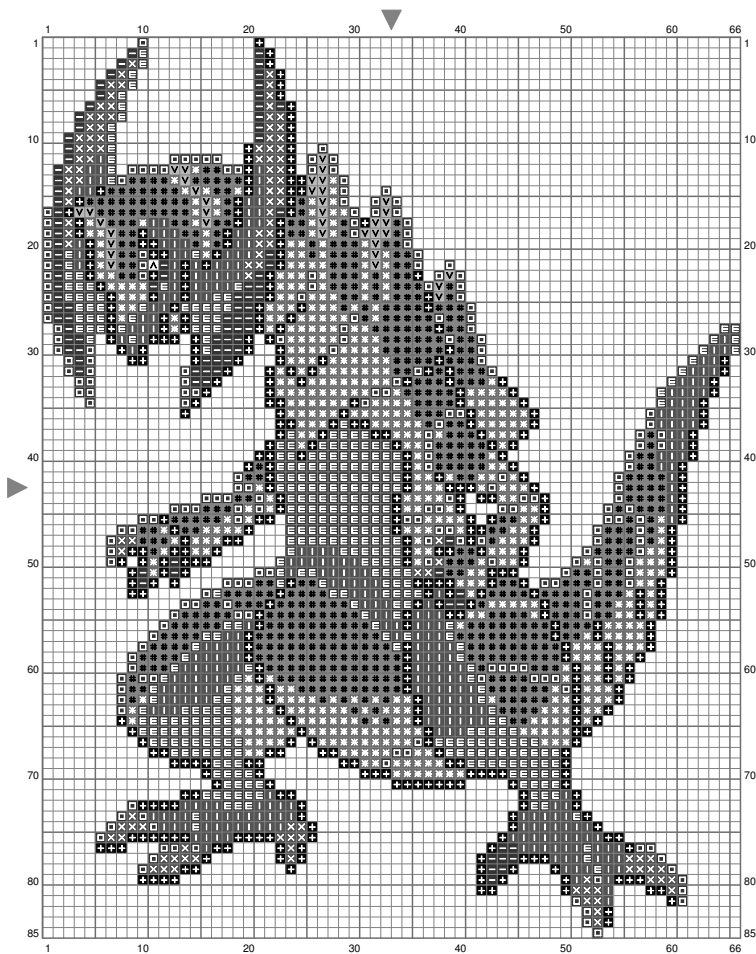


Ononokusu



(This chart is printed using KG-Chart LE for Cross Stitch.)

Stitch Count:66w x 85h // Cloth:Aida Cloth's Color:White

Finished Size:18.62 cm x 23.98 cm (18 ct./inch) // Total 10 Colors

Color Table (DMC)

Cross Stitch

▲	BLANC	(1 ct)
▼	166	(37 ct)
+	310	(441 ct)
✱	469	(489 ct)
■	498	(96 ct)
▢	500	(361 ct)
■	732	(534 ct)
✕	817	(110 ct)
▢	934	(233 ct)
■	3799	(318 ct)