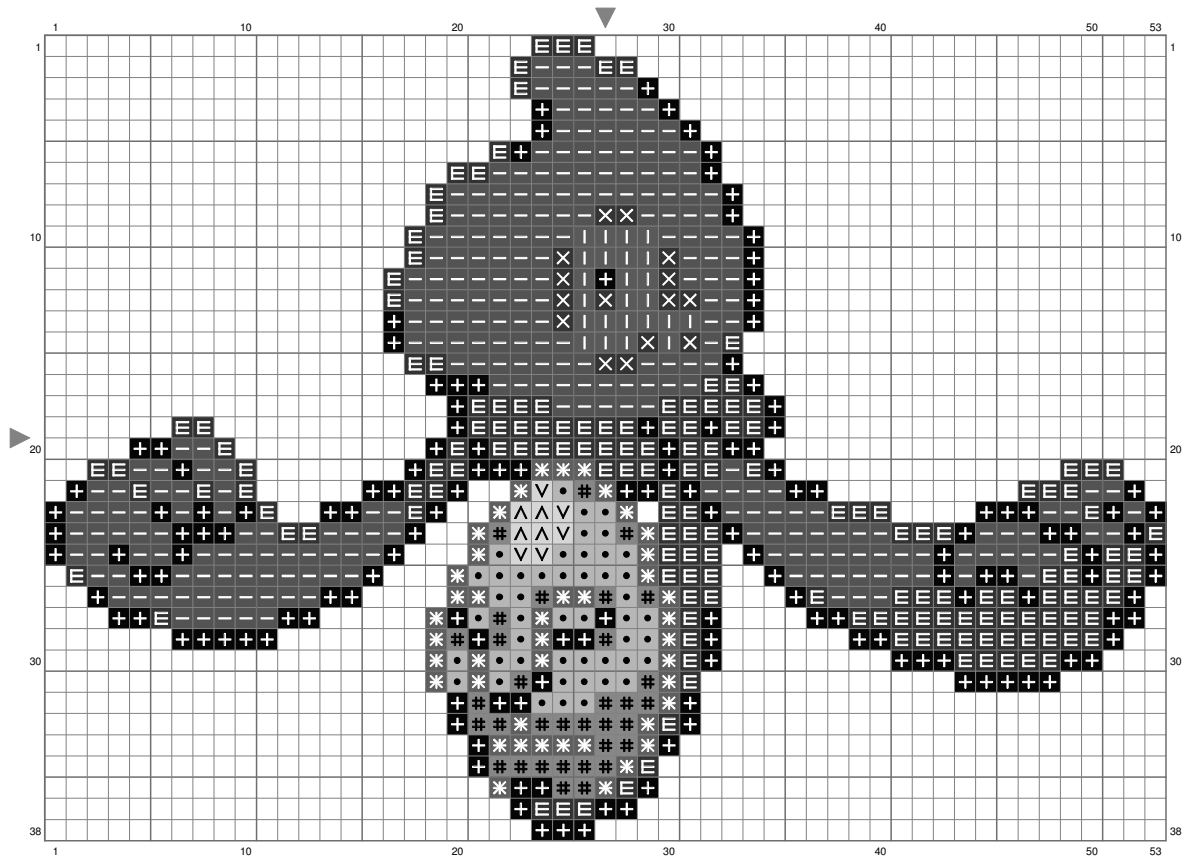


Desumasu



(This chart is printed using KG-Chart LE for Cross Stitch.)

Stitch Count: 53w x 38h // Cloth: Aida Cloth's Color: White

Finished Size: 14.95 cm x 10.72 cm (18 ct./inch) // Total 10 Colors

Color Table (DMC)

Cross Stitch

+	310	(153 ct)
I	349	(24 ct)
X	498	(15 ct)
•	742	(47 ct)
V	743	(5 ct)
#	782	(33 ct)
*	869	(43 ct)
^	928	(4 ct)
E	934	(160 ct)
—	3799	(265 ct)