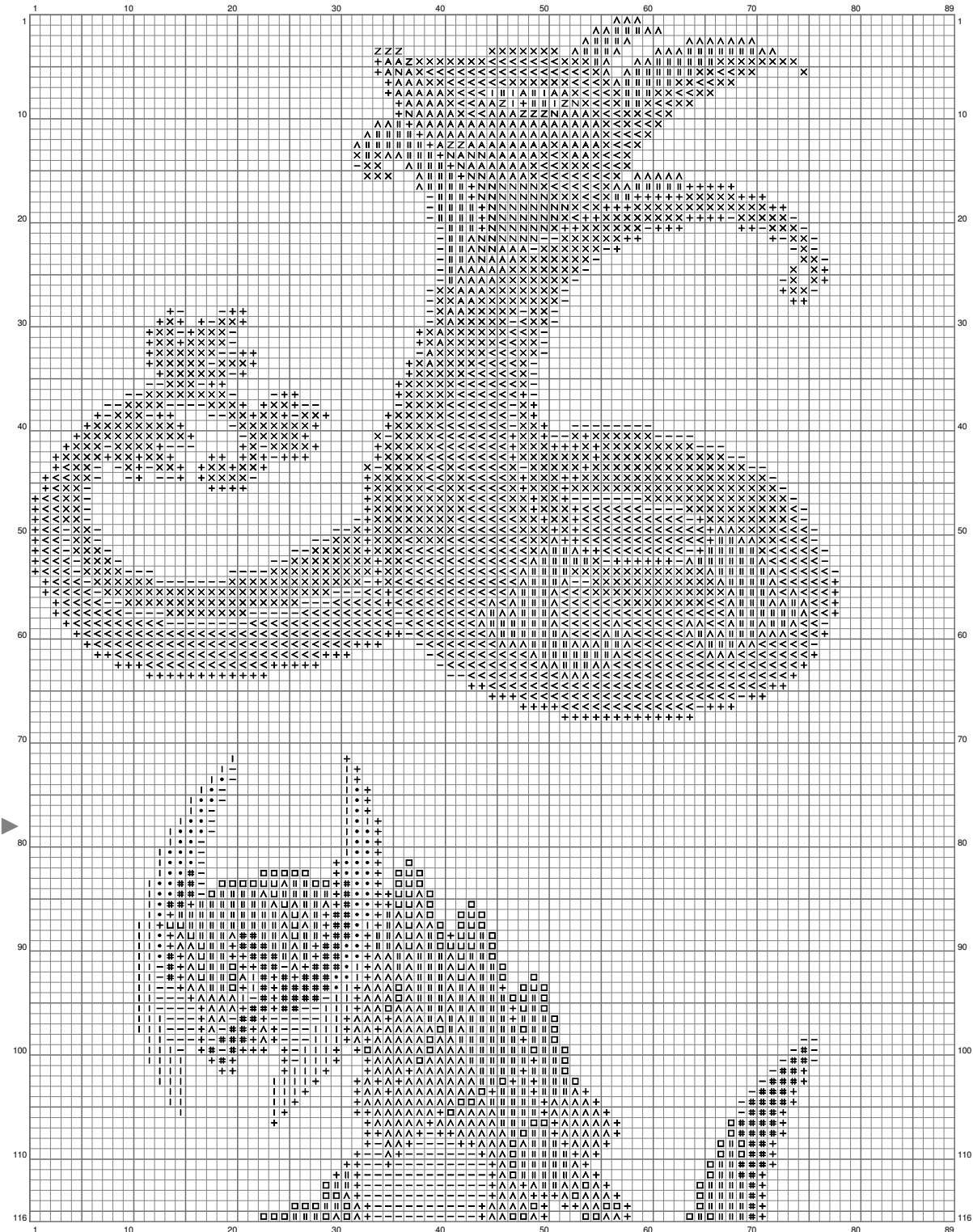
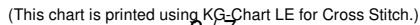


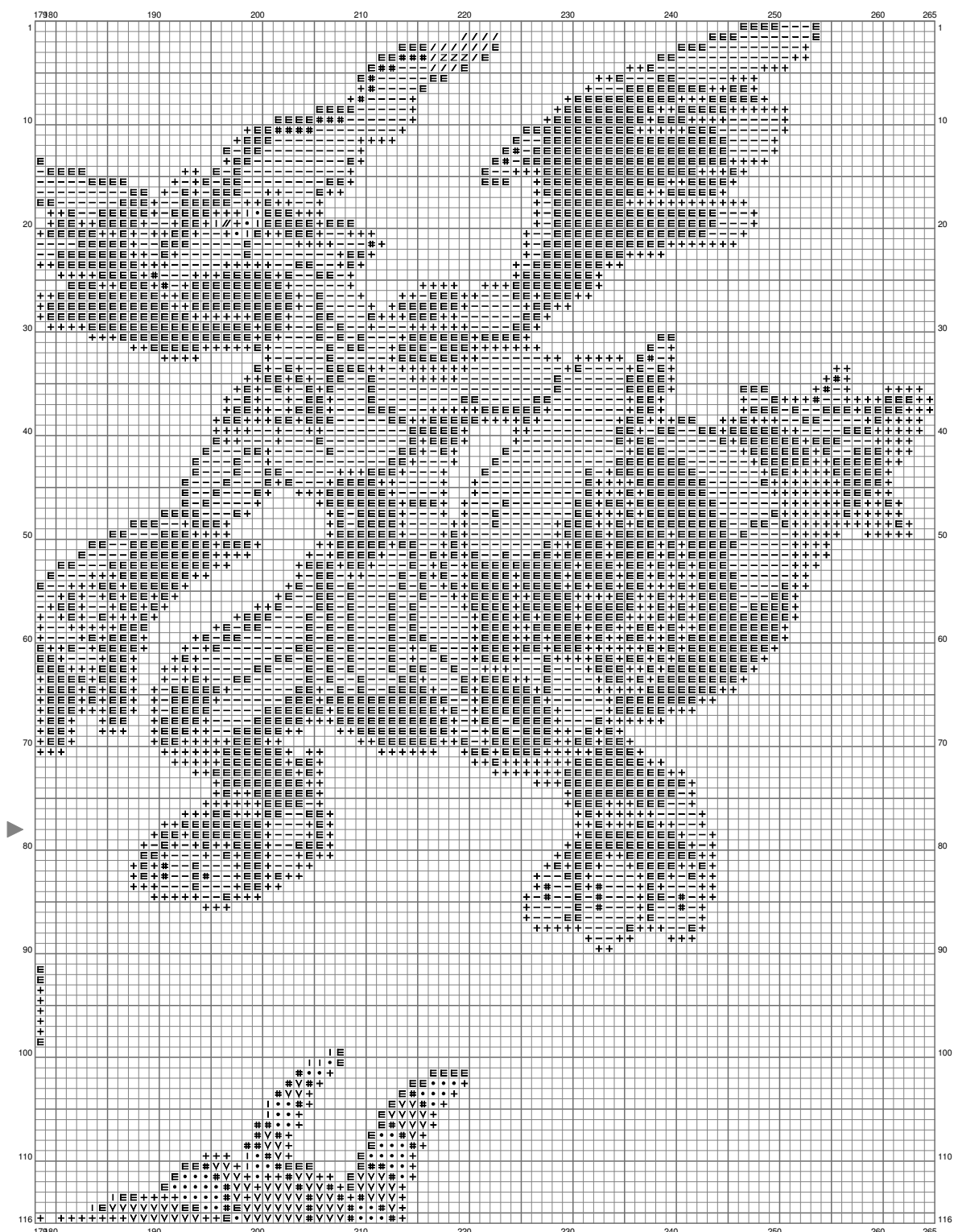
Pokemon



(This chart is printed using KG-Chart LE for Cross Stitch.)

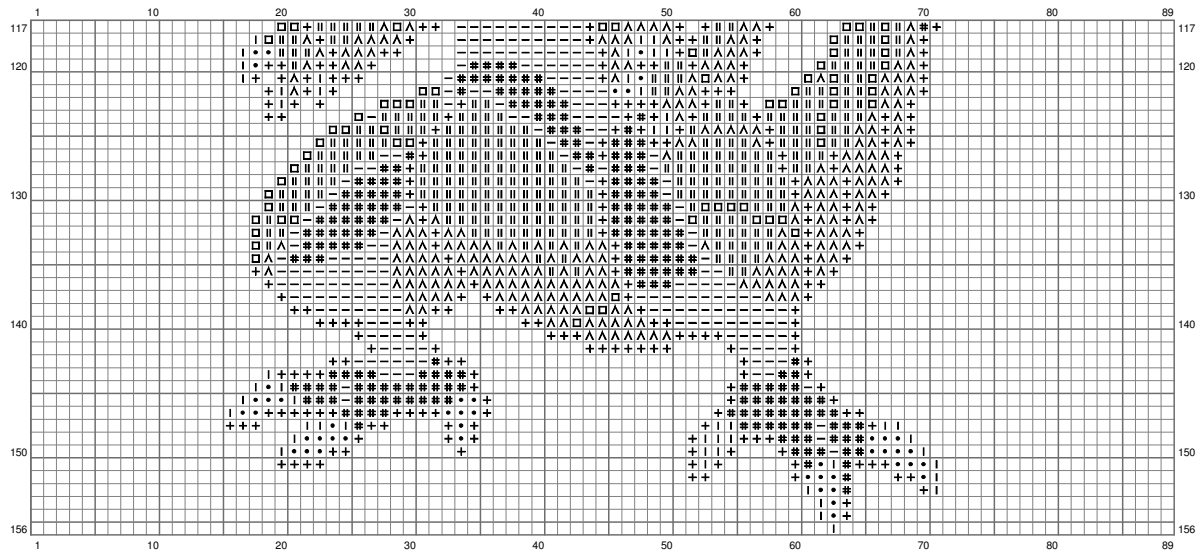


Pokemon



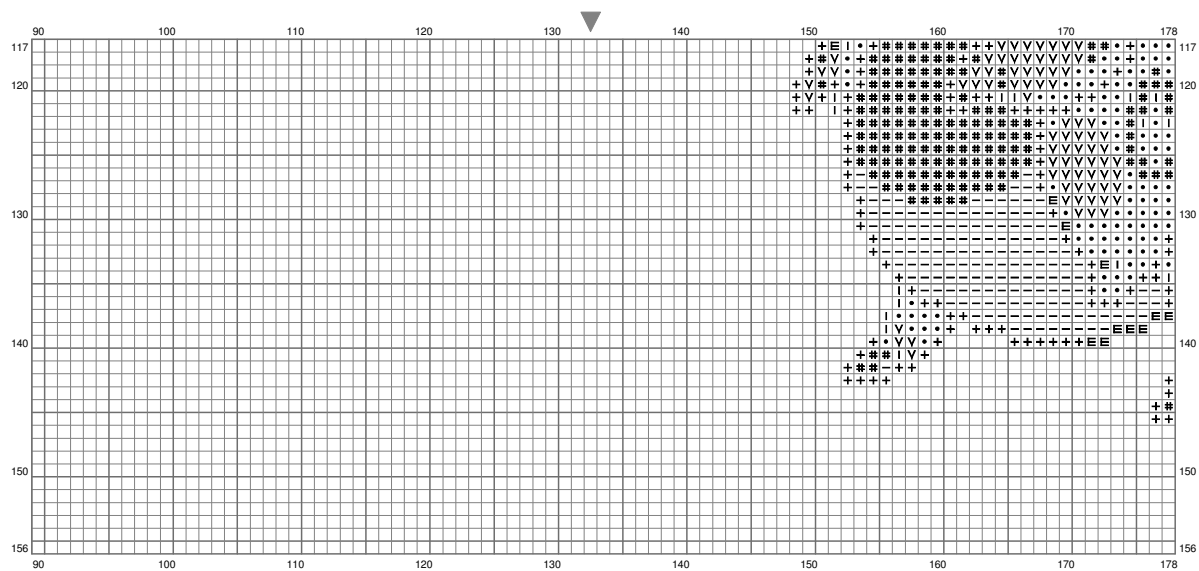
(This chart is printed using KG-Chart LE for Cross Stitch.)

Pokemon



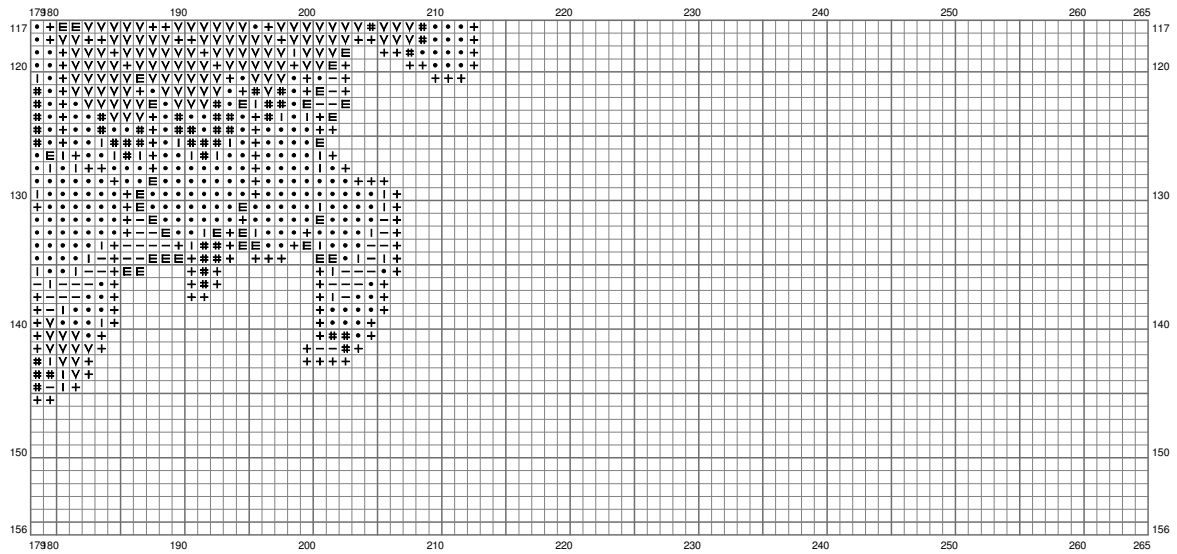
(This chart is printed using KG-Chart LE for Cross Stitch.)

Pokemon



(This chart is printed using KG-Chart LE for Cross Stitch.)

Pokemon



Pokemon

Stitch Count:265w x 156h




















Cloth:Aida Cloth's Color:White

Finished Size:74.78 cm x 44.02 cm (18 ct./inch)

Total 19 Colors

Color Table (DMC)

Cross Stitch

	BLANC	(202 ct)
	304	(700 ct)
	310	(2805 ct)
	318	(53 ct)
	368	(775 ct)
	422	(266 ct)
	469	(766 ct)
	500	(2399 ct)
	518	(26 ct)
	815	(310 ct)
	910	(821 ct)
	917	(688 ct)
	934	(331 ct)
	939	(2145 ct)
	3024	(254 ct)
	3799	(1032 ct)
	3842	(975 ct)
	3843	(15 ct)
	3852	(1106 ct)