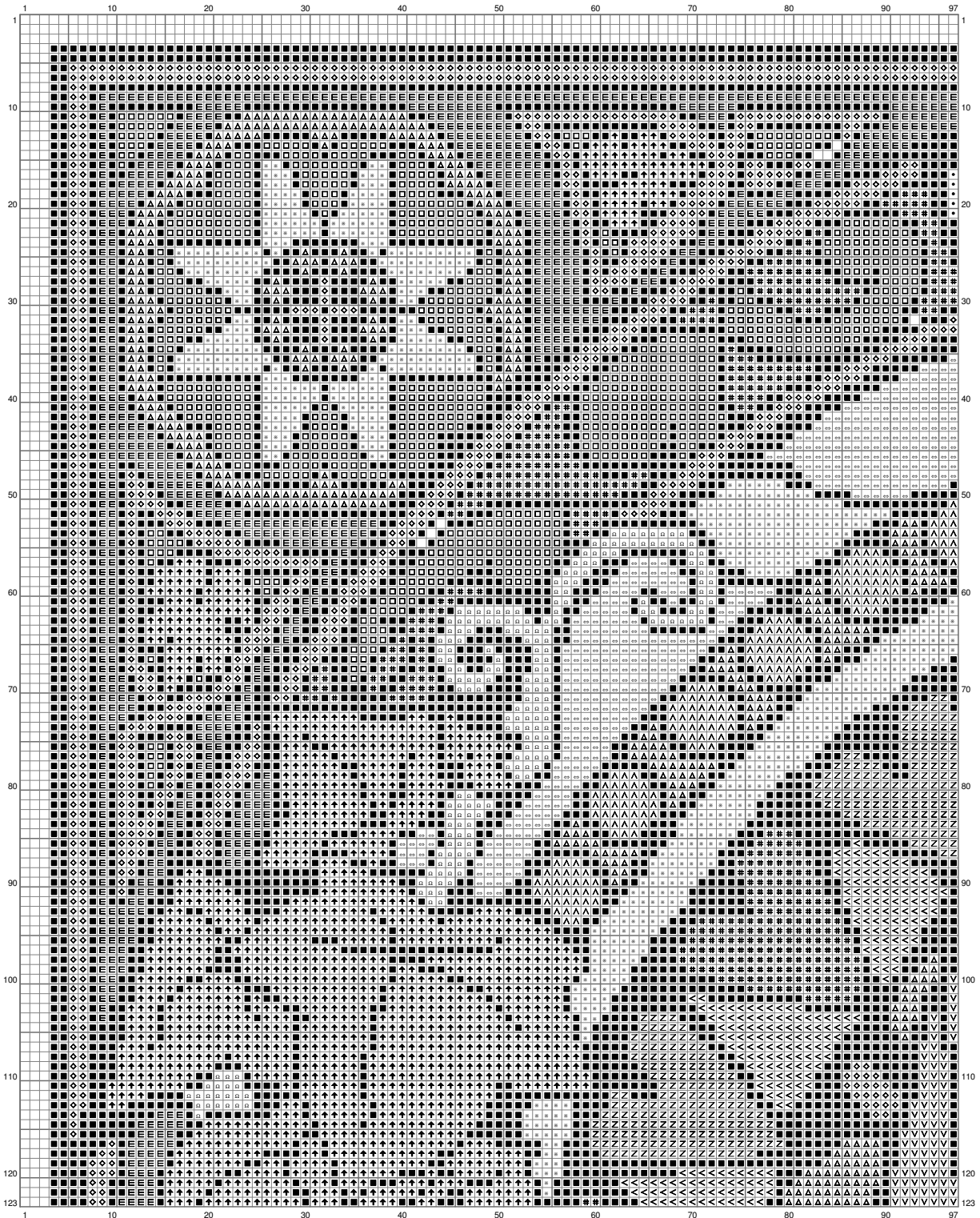
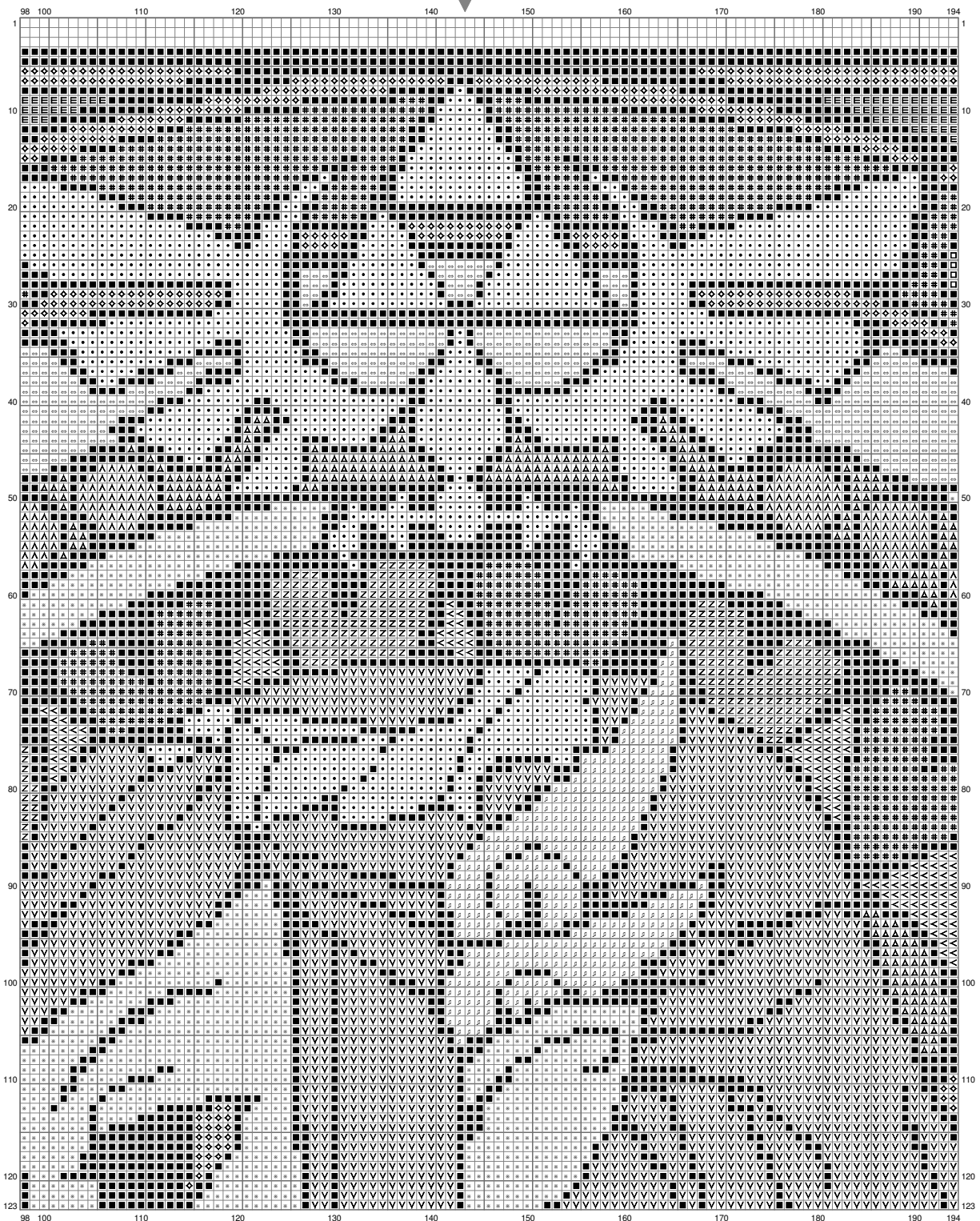


# Untitled



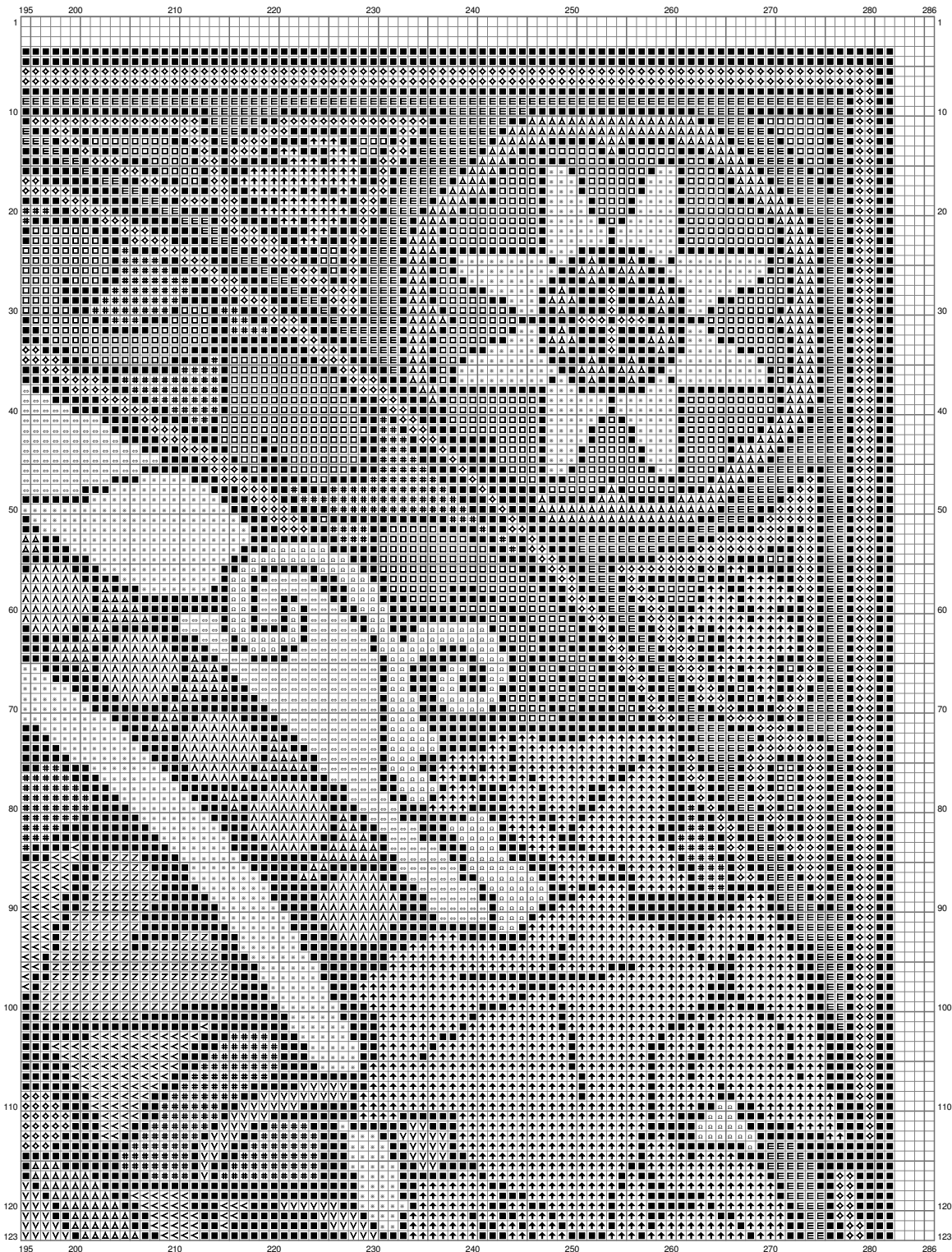
(This chart is printed using KG-Chart LE for Cross Stitch.)

# Untitled



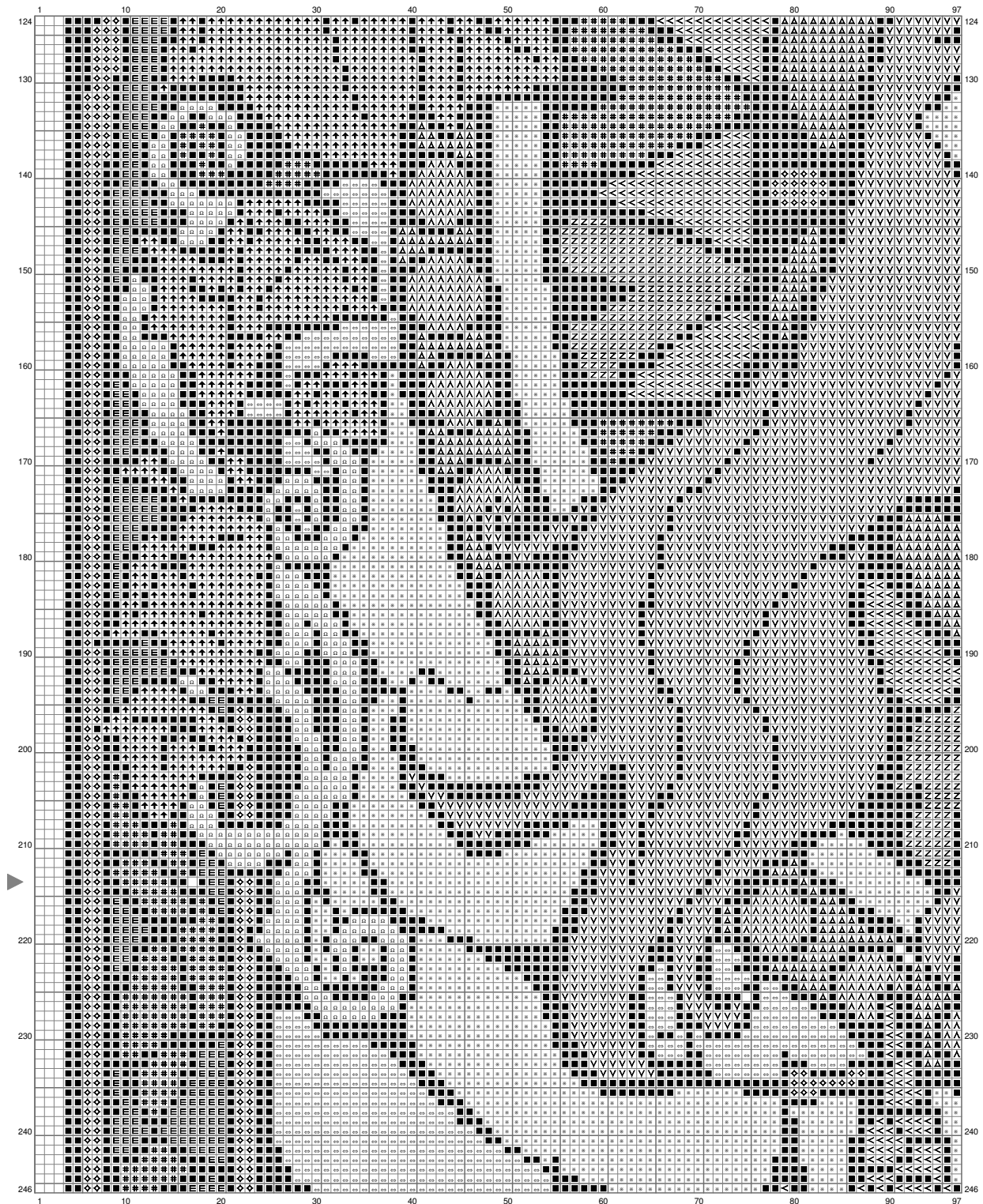
(This chart is printed using KG-Chart LE for Cross Stitch.)

# Untitled



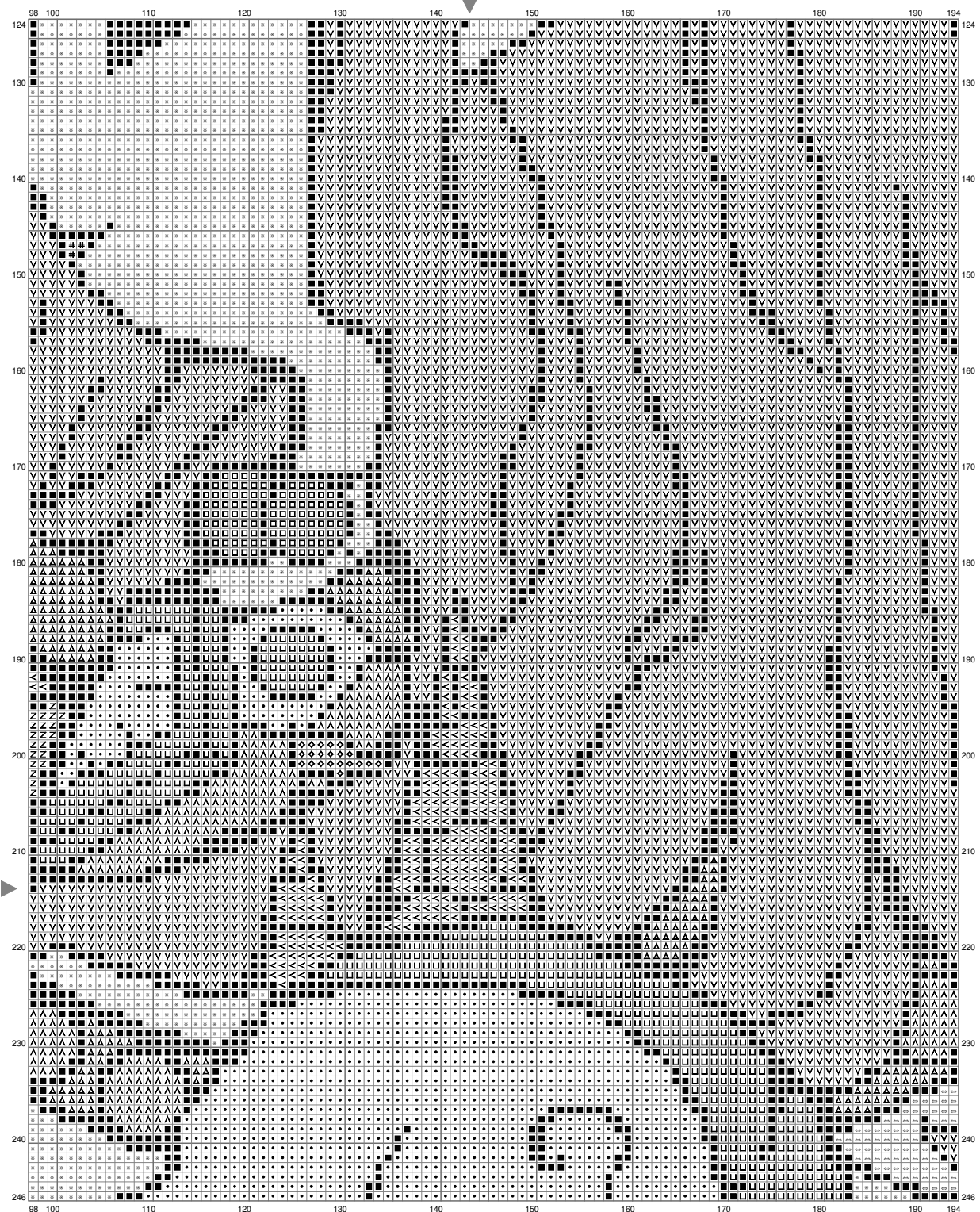
(This chart is printed using KG-Chart LE for Cross Stitch.)

# Untitled



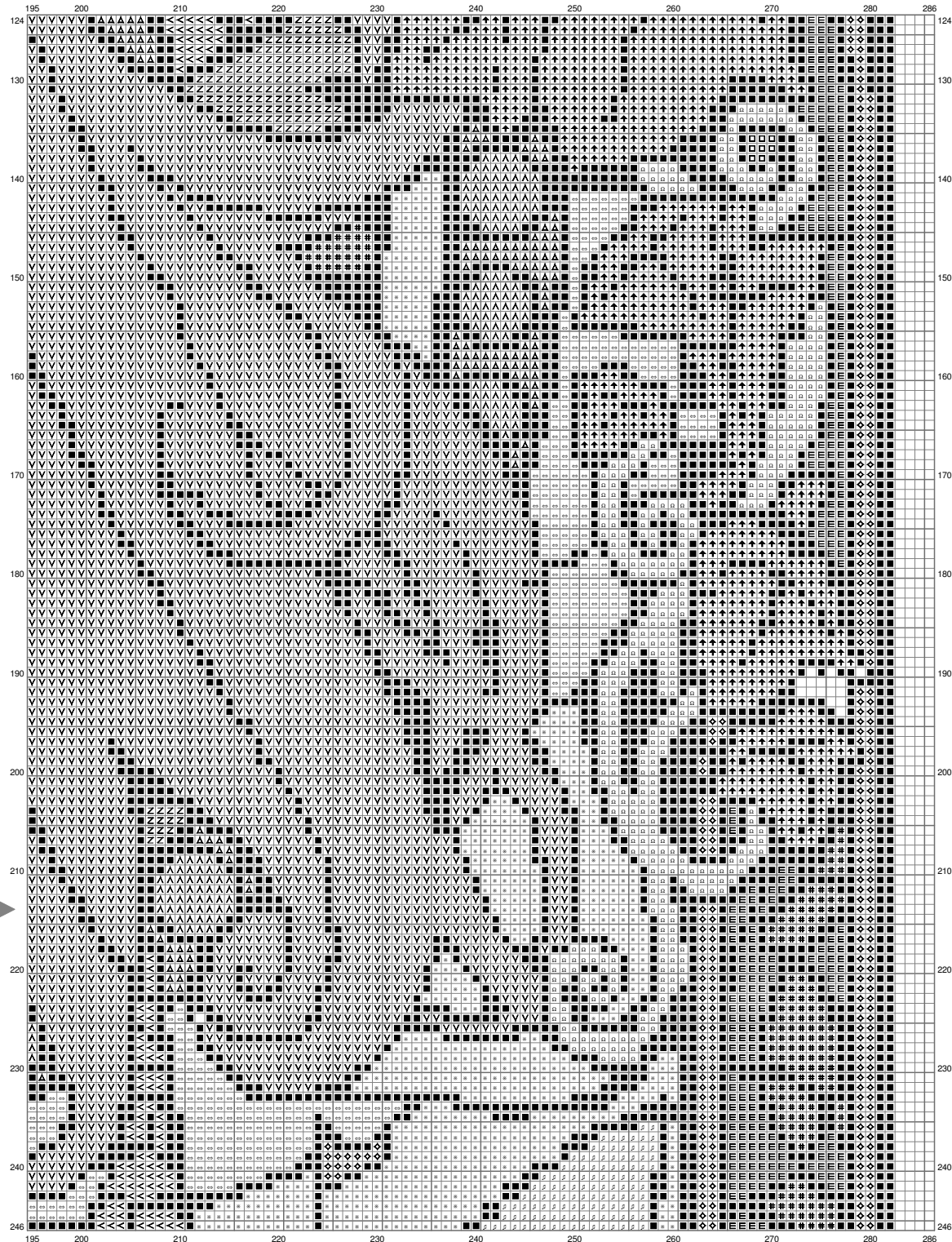
(This chart is printed using KG-Chart LE for Cross Stitch.)

# Untitled



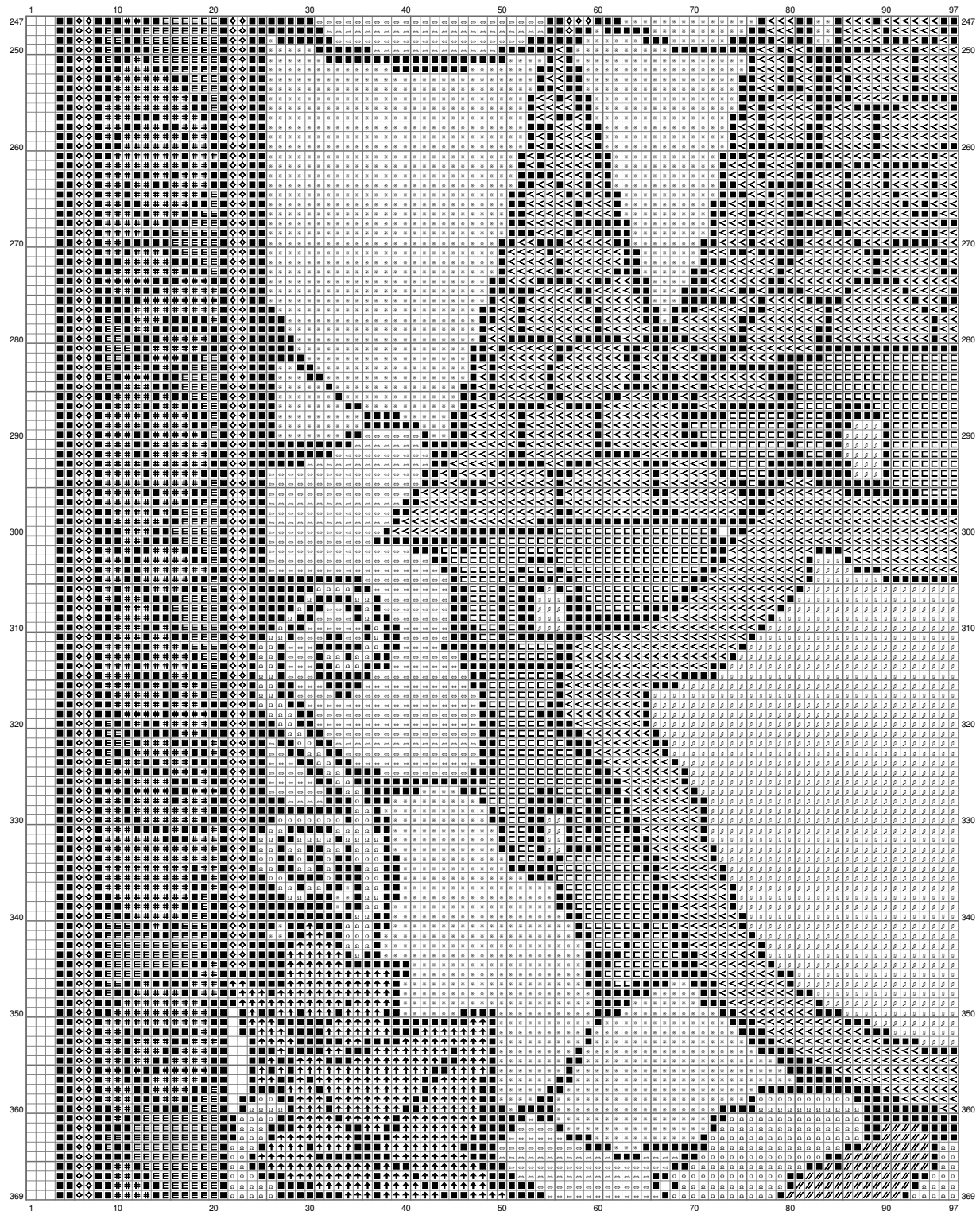
(This chart is printed using KG-Chart LE for Cross Stitch.)

# Untitled



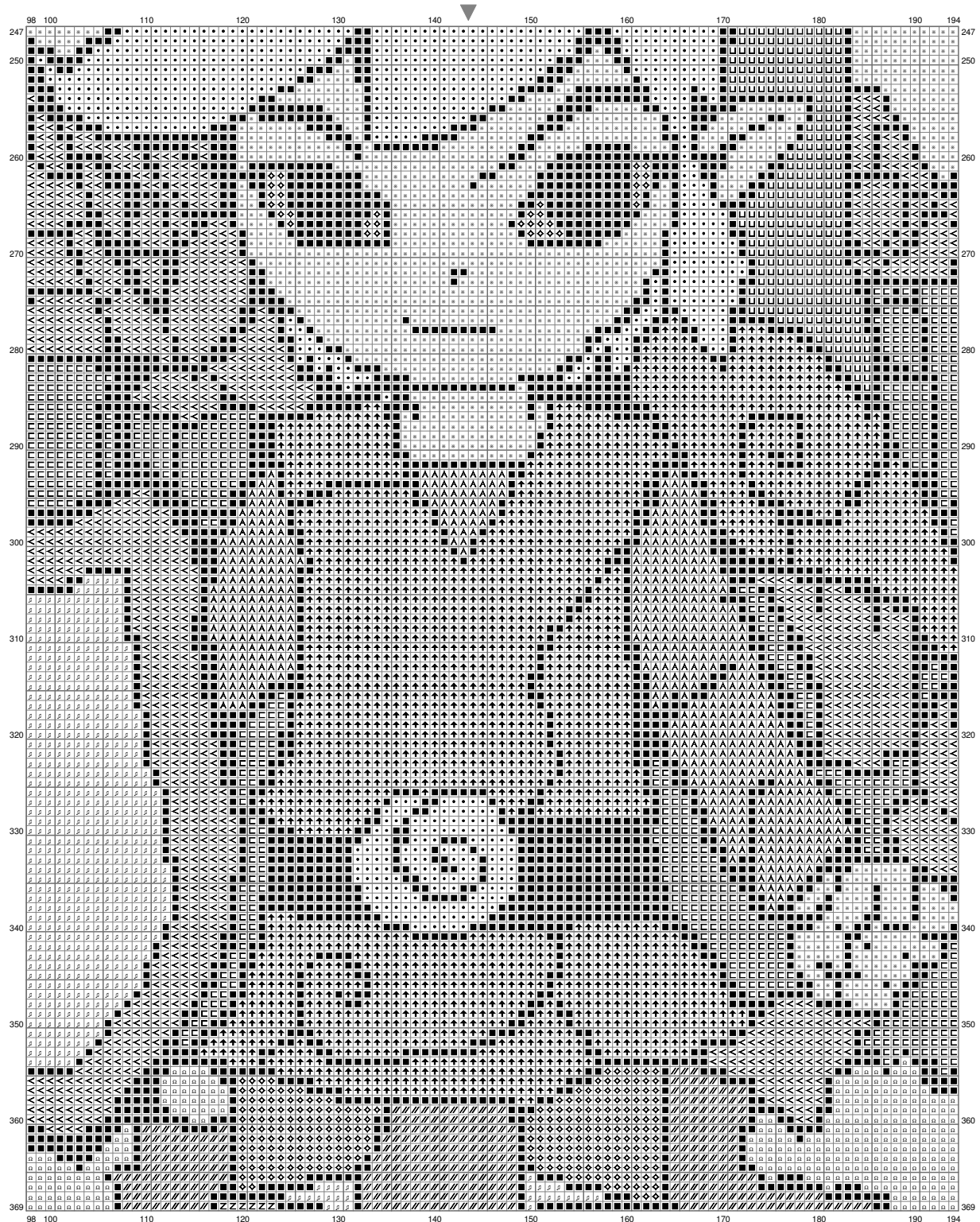
(This chart is printed using KG-Chart LE for Cross Stitch.

# Untitled



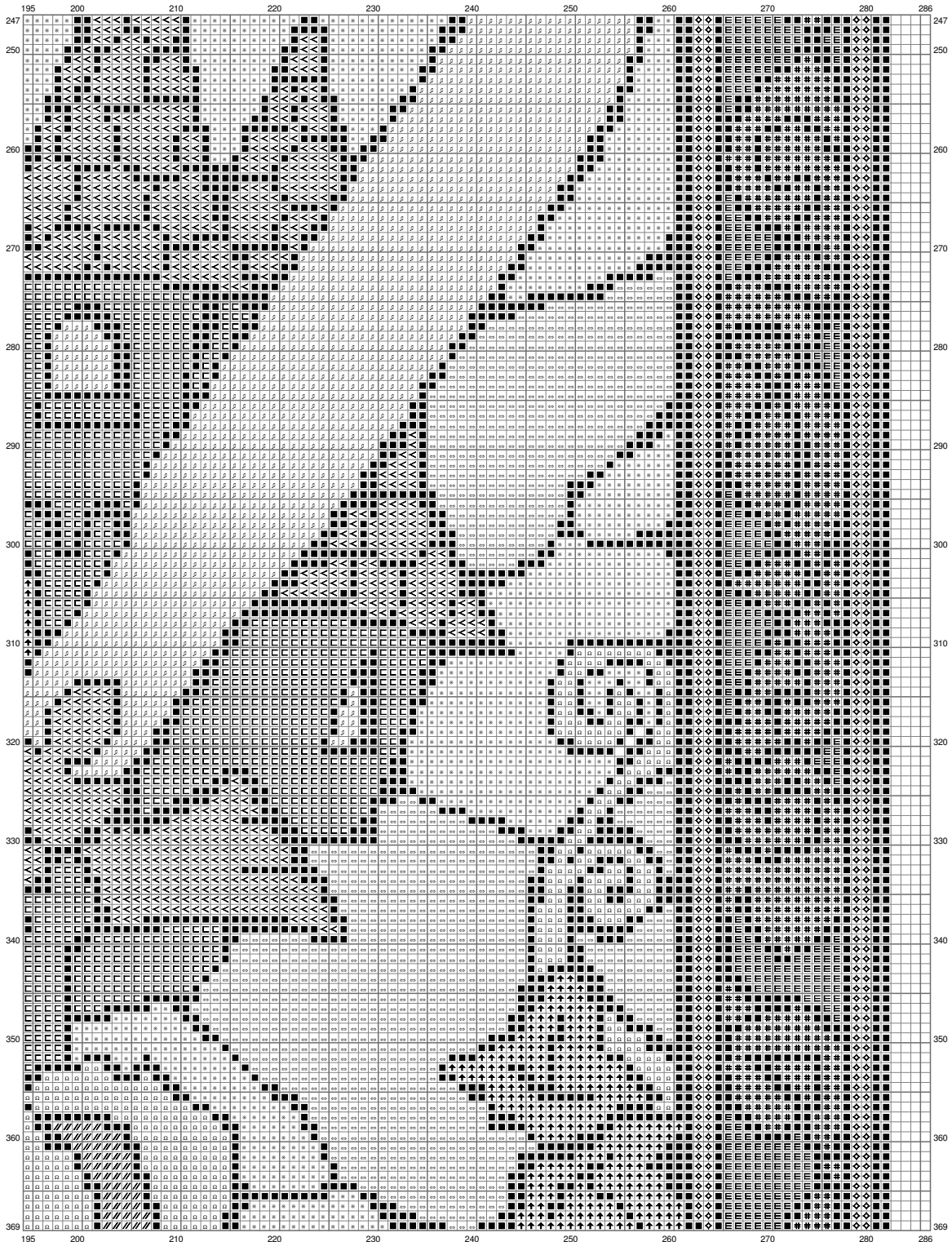
(This chart is printed using KG-Chart LE for Cross Stitch.)

# Untitled



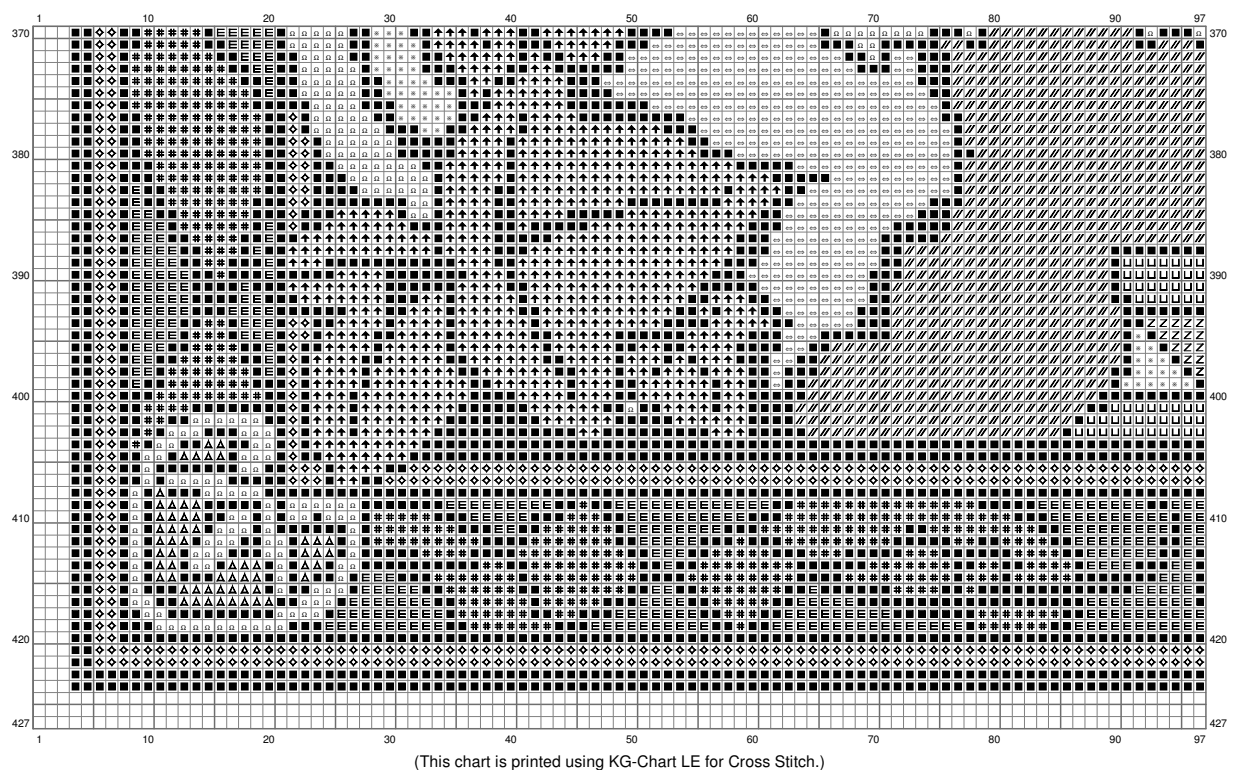
(This chart is printed using KG-Chart LE for Cross Stitch.)

# Untitled

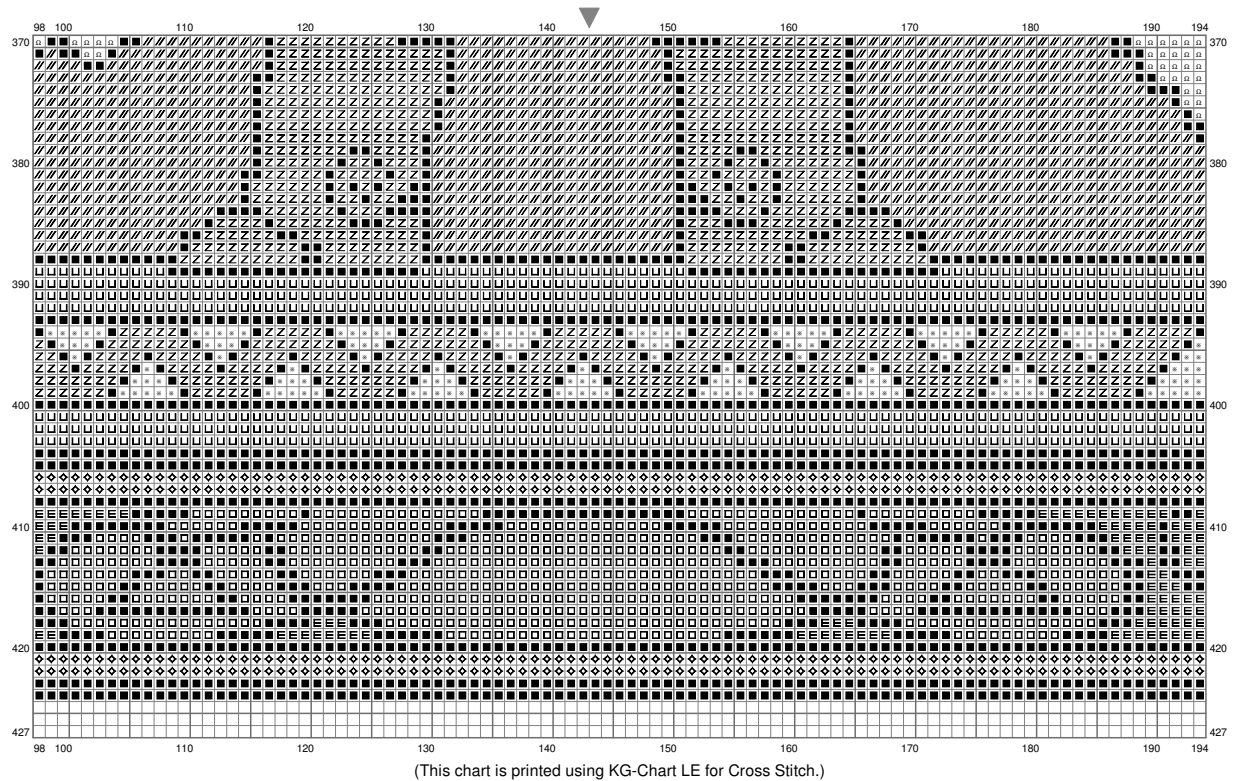


(This chart is printed using KG-Chart LE for Cross Stitch.)

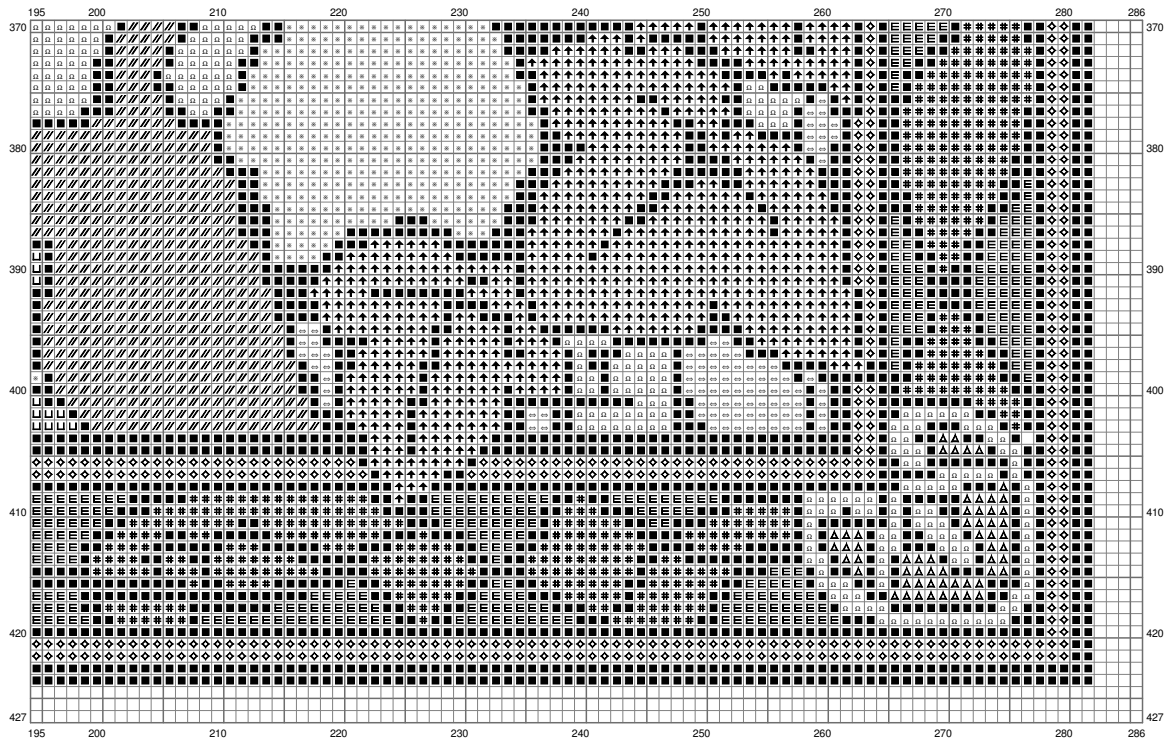
# Untitled



# Untitled



# Untitled

















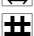





# Untitled

Stitch Count:286w x 427h  
Cloth:Aida Cloth's Color:White  
Finished Size:103.77 cm x 154.94 cm (14 ct./inch)  
Total 20 Colors

## Color Table (DMC)

---

### Cross Stitch

	BLANC	(5615 ct)
	310	(34167 ct)
	312	(5313 ct)
	321	(2009 ct)
	327	(1301 ct)
	367	(2874 ct)
	368	(9414 ct)
	472	(632 ct)
	644	(2184 ct)
	727	(13766 ct)
	741	(2020 ct)
	742	(1564 ct)
	800	(3322 ct)
	829	(2755 ct)
	3023	(3731 ct)
	3078	(4873 ct)
	3824	(4832 ct)
	3836	(2456 ct)
	3852	(3643 ct)
	3855	(10937 ct)

### Comment

---

kvar: triforce,  
blommorna, v. löv