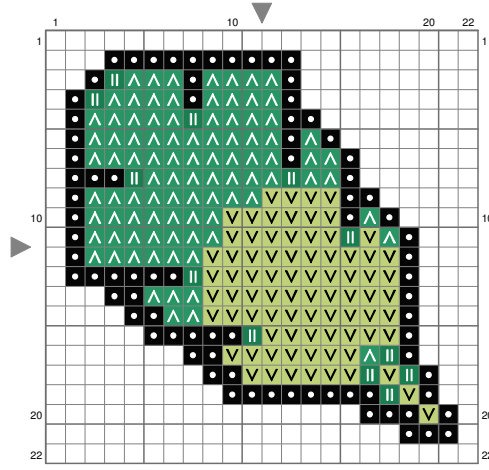


earth



(This chart is printed using KG-Chart LE for Cross Stitch.)

Stitch Count:22w x 22h // Cloth:Aida Cloth's Color:White

Finished Size:7.98 cm x 7.98 cm (14 ct./inch) // Total 4 Colors

Color Table (DMC)

Cross Stitch

310	(80 ct)
472	(80 ct)
911	(93 ct)
910	(12 ct)