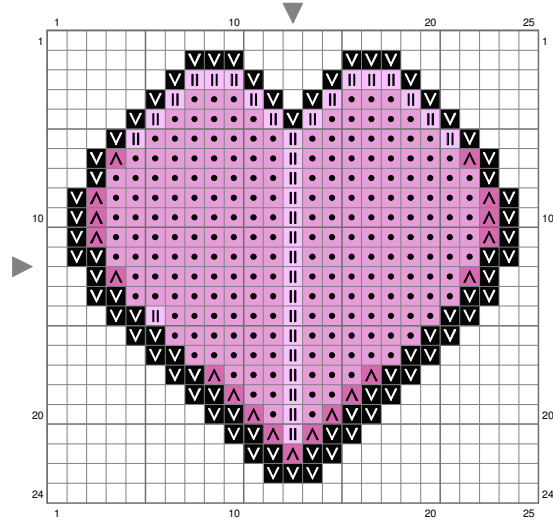


soul







(This chart is printed using KG-Chart LE for Cross Stitch.)

Stitch Count: 25w x 24h // Cloth: Aida Cloth's Color: White

Finished Size: 9.07 cm x 8.70 cm (14 ct./inch) // Total 4 Colors

Color Table (DMC)

Cross Stitch

	3607	(19 ct)
	153	(33 ct)
	310	(74 ct)
	3836	(215 ct)