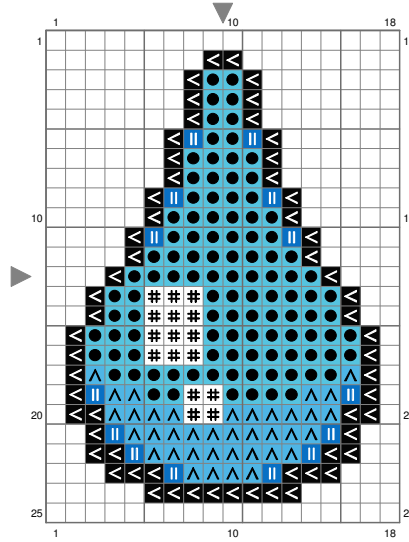


# **cascade**



(This chart is printed using KG-Chart LE for Cross Stitch.)

Stitch Count:18w x 25h // Cloth:Aida Cloth's Color:White

Finished Size:6.53 cm x 9.07 cm (14 ct./inch) // Total 5 Colors

## Color Table (DMC)

### **Cross Stitch**

#	B5200	(16 ct)
◀	310	(60 ct)
	3843	(14 ct)
△	3845	(38 ct)
●	3846	(108 ct)