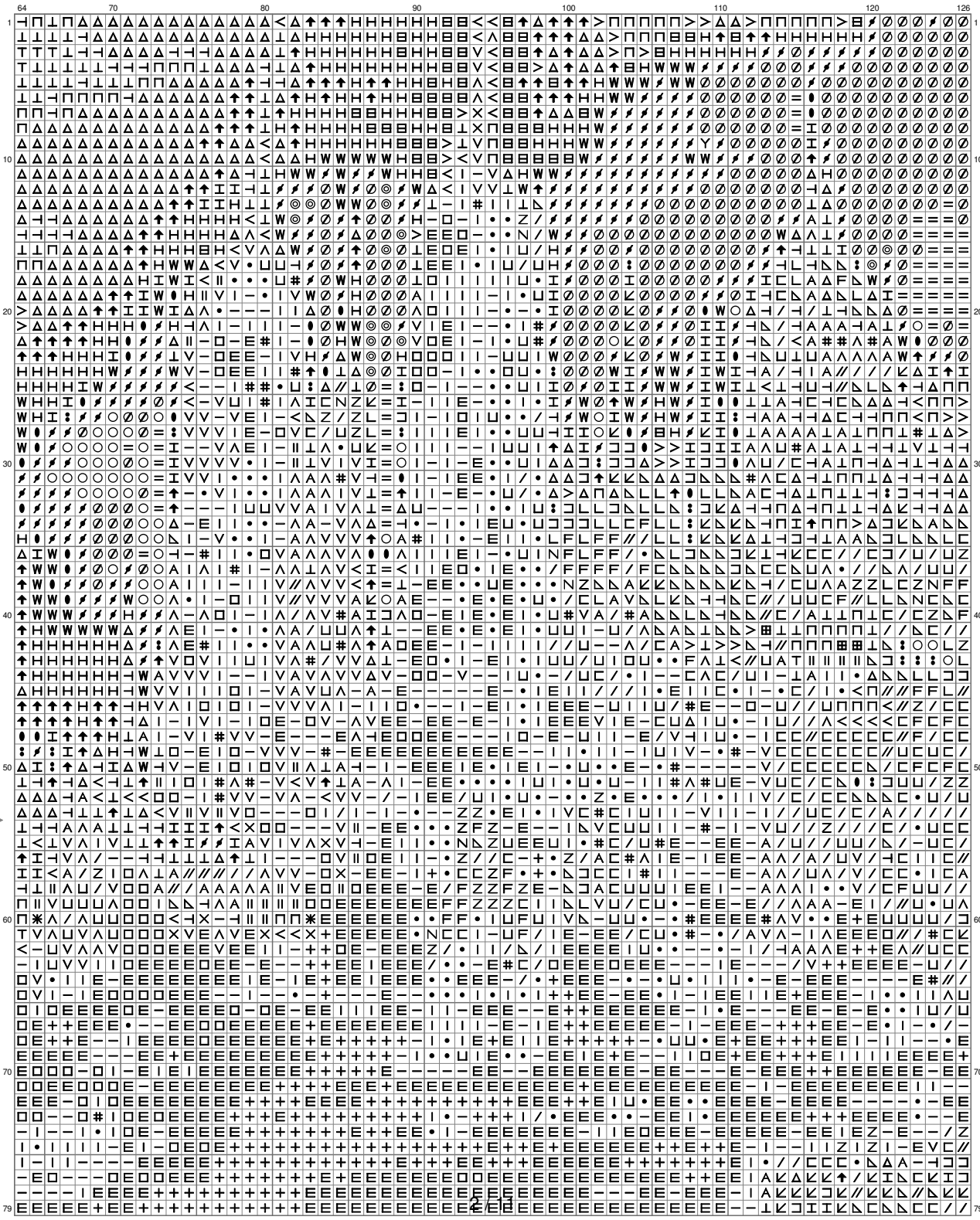


## UD



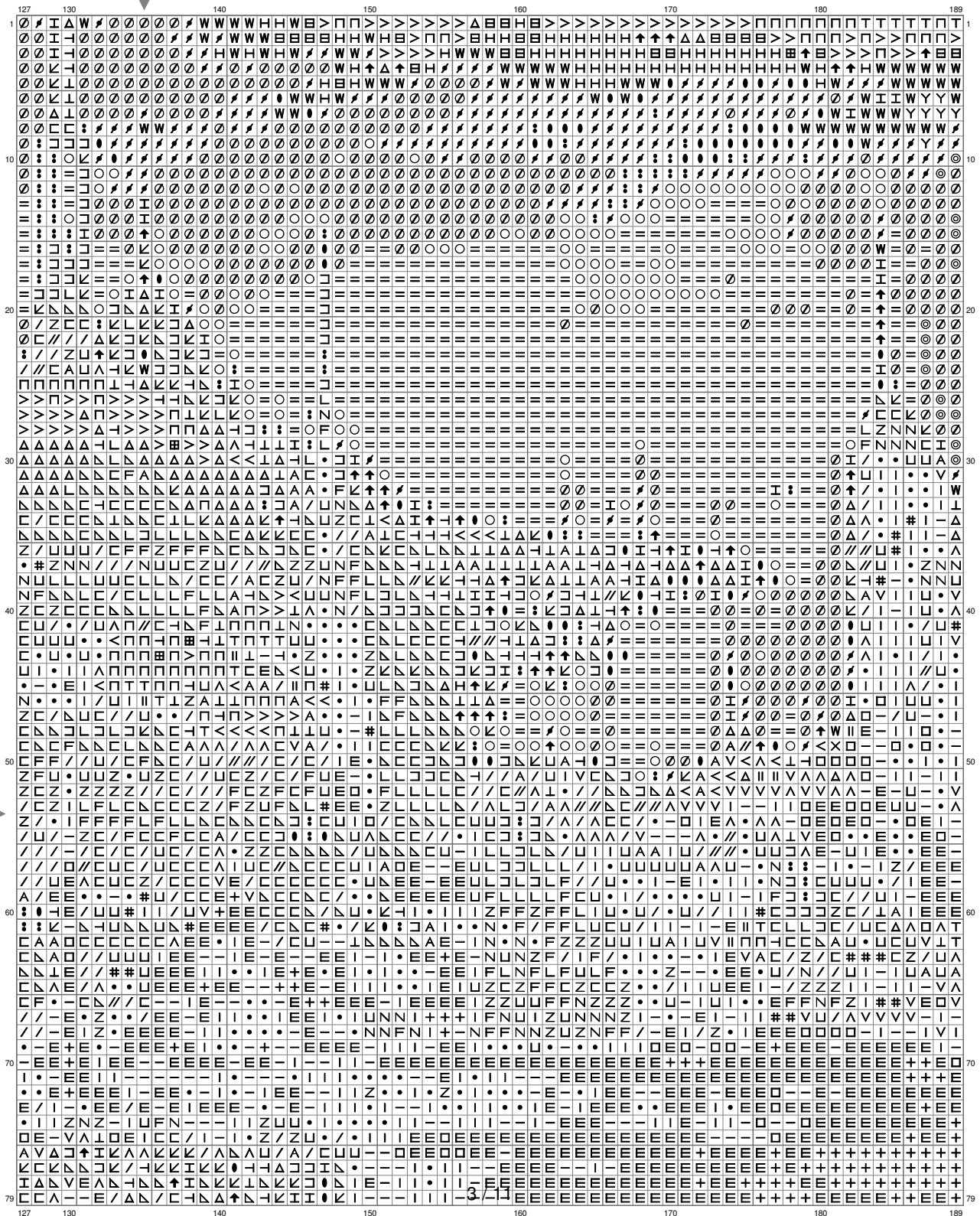
(This chart is printed using KG-Chart LE for Cross Stitch

## UD



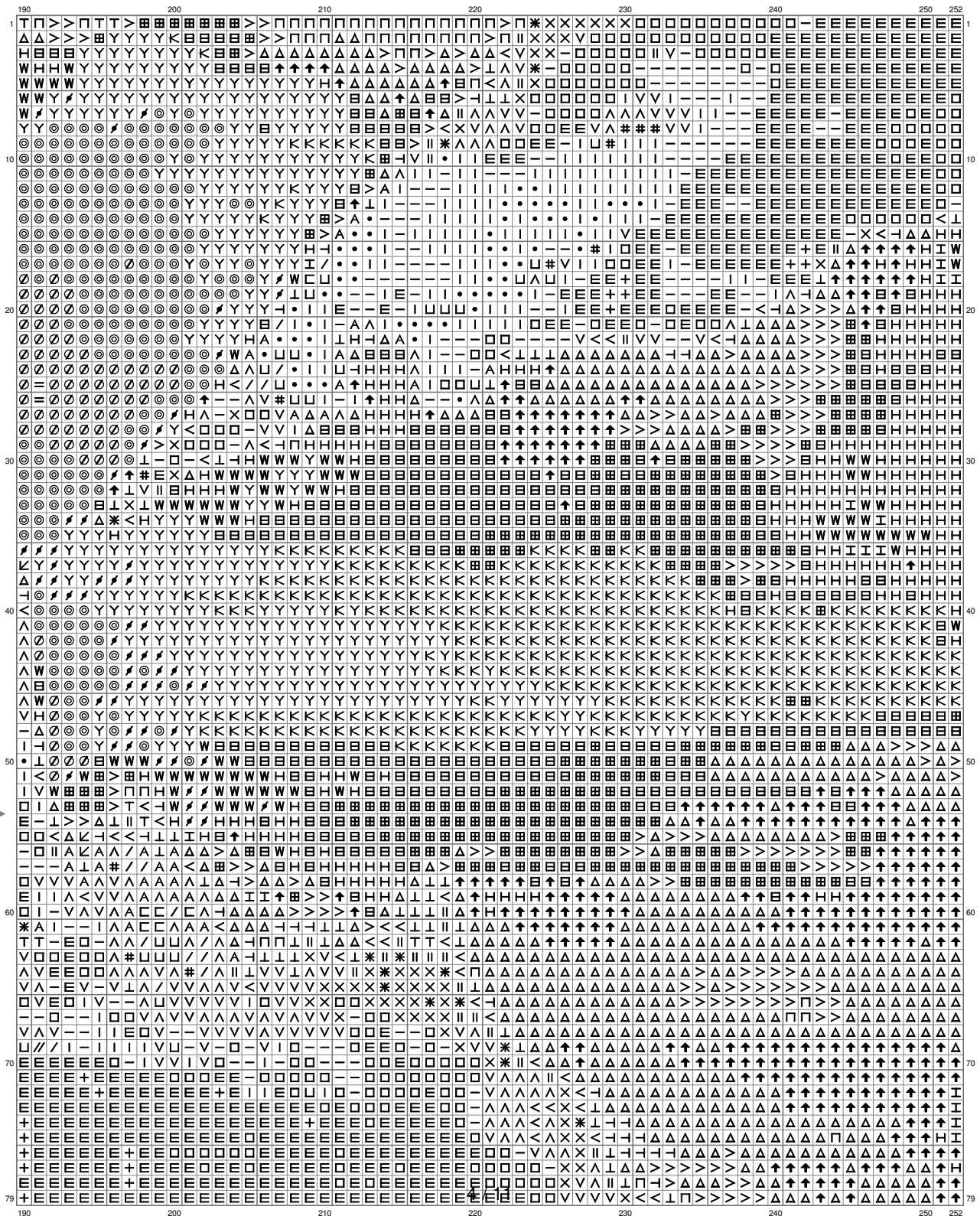
(This chart is printed using KG-Chart LE for Cross Stitch.)

# UD

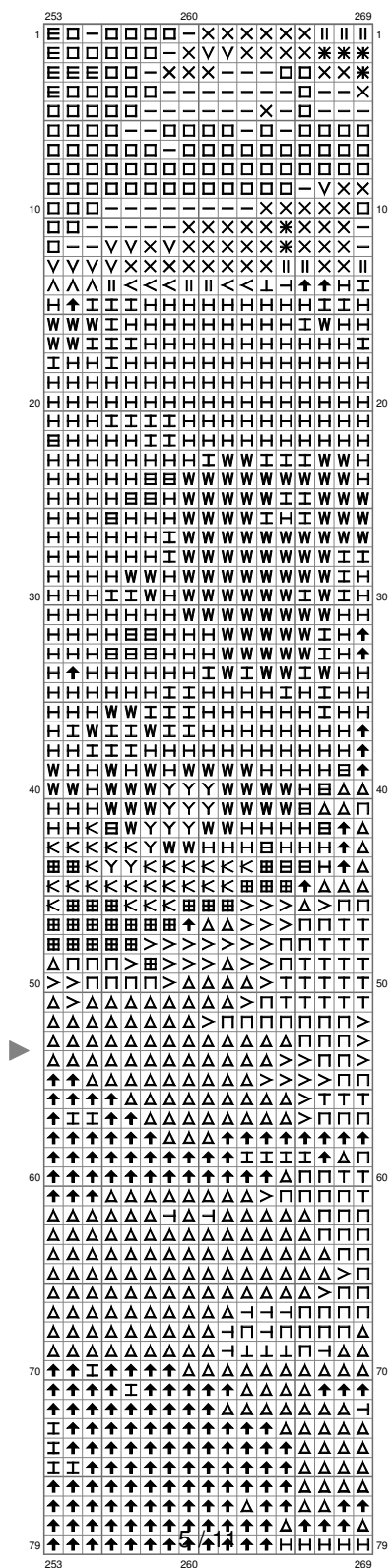


(This chart is printed using KG-Chart LE for Cross Stitch.)

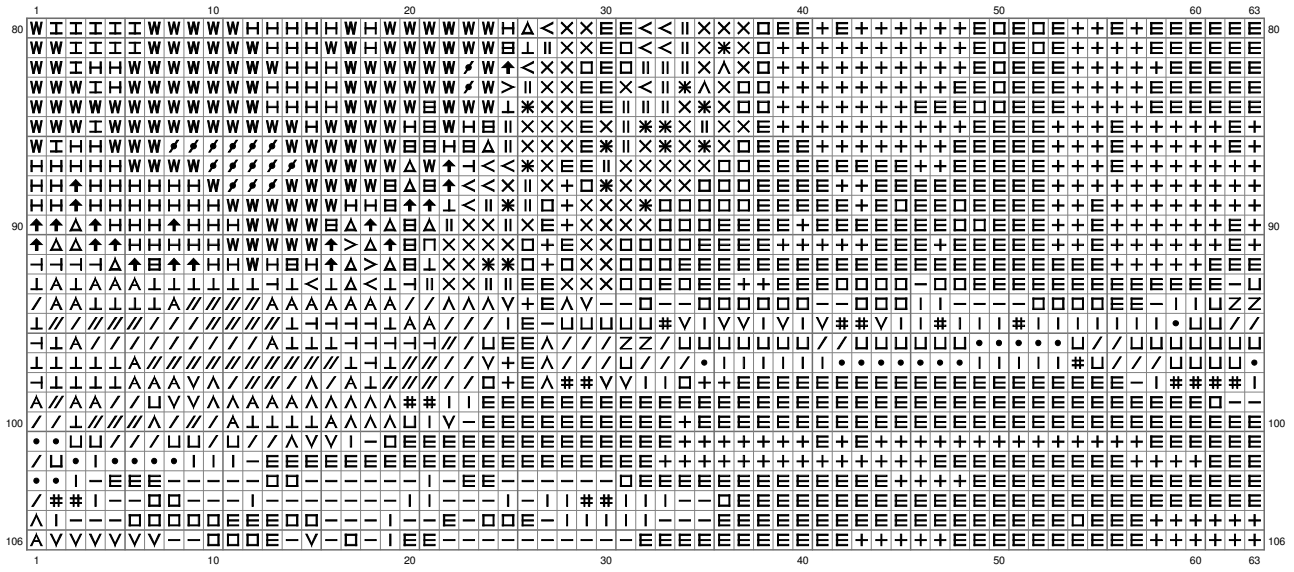
# UD



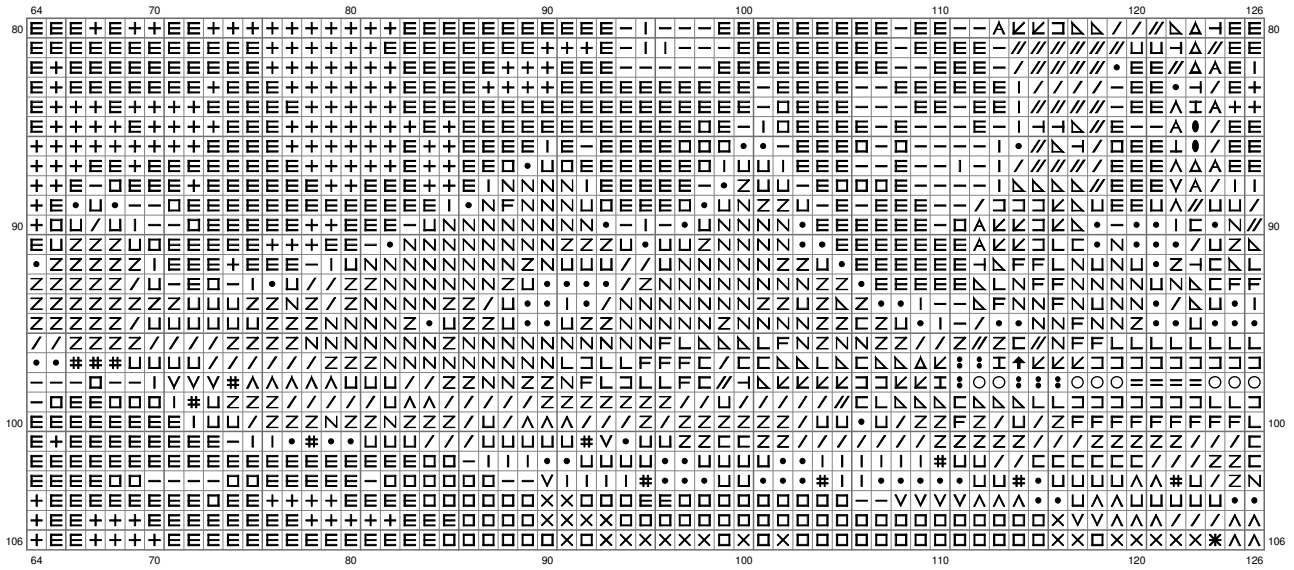
# UD



(This chart is printed using KG-Chart LE for Cross Stitch.)

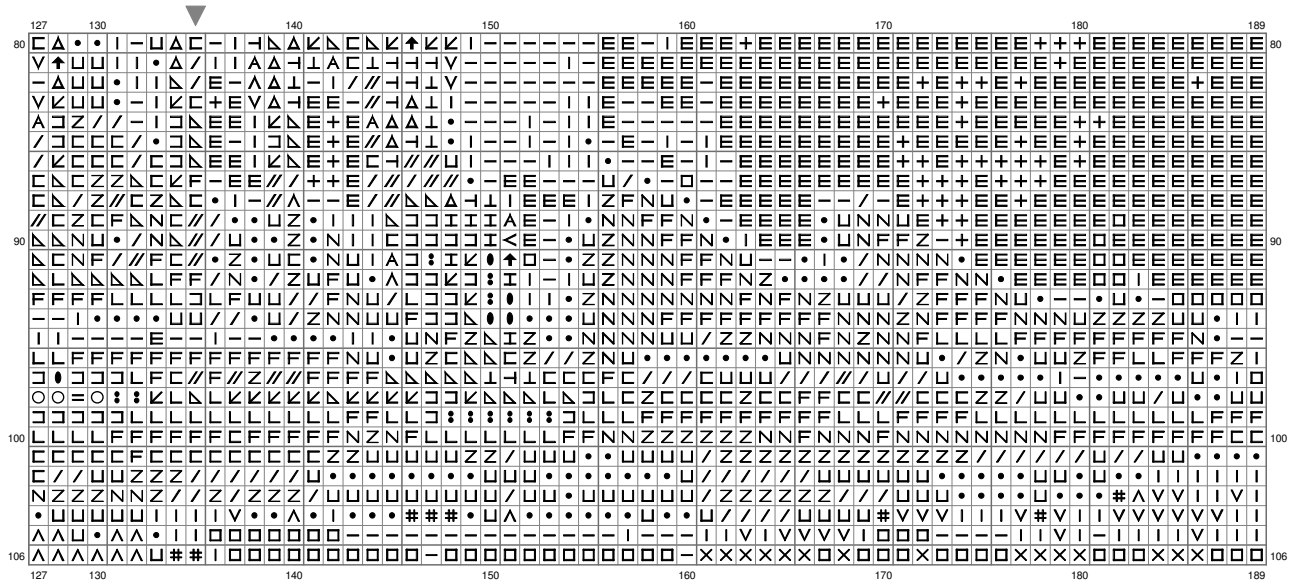
UD

(This chart is printed using KG-Chart LE for Cross Stitch.)

UD

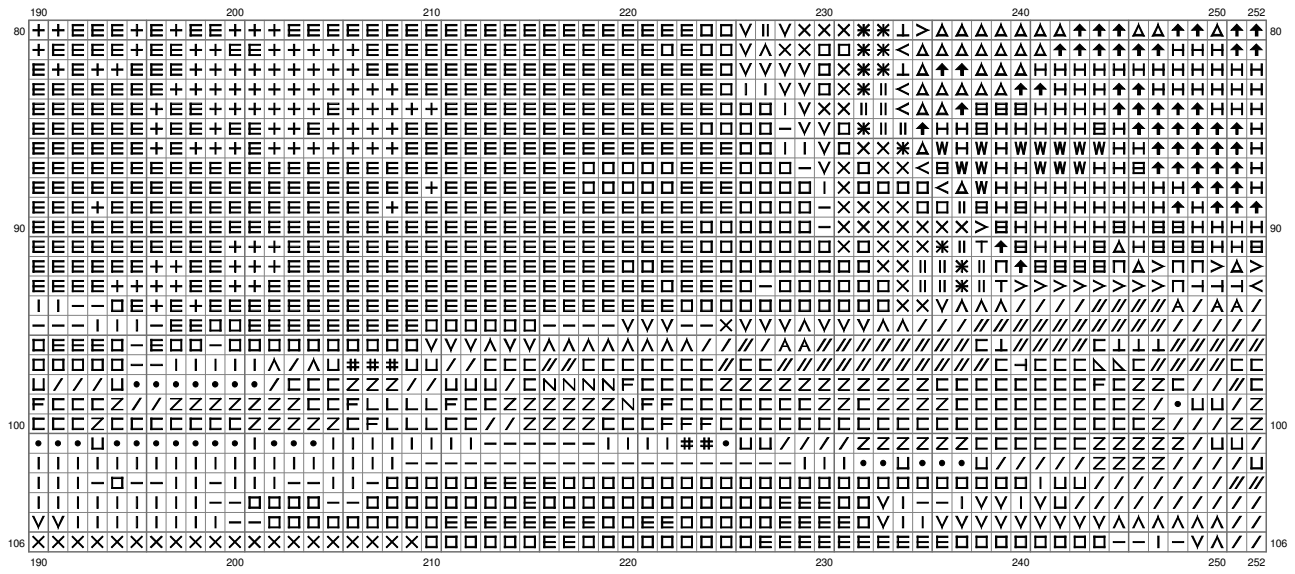
(This chart is printed using KG-Chart LE for Cross Stitch.)

# UD

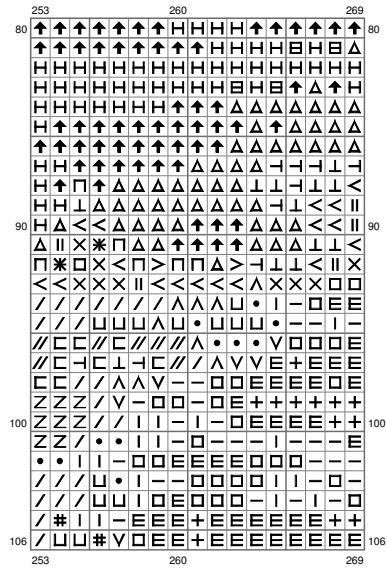




# UD



# UD

















































(This chart is printed using KG-Chart LE for Cross Stitch.)

# UD

Stitch Count:269w x 106h  
 Cloth:Aida Cloth's Color:Unbleached  
 Finished Size:75.91 cm x 29.91 cm (18 ct./inch)  
 Total 46 Colors

Color Table (DMC)

Cross Stitch					
	310	(1164 ct)		522	(491 ct)
	939	(3619 ct)		926	(561 ct)
	934	(1132 ct)		3022	(1813 ct)
	3371	(1233 ct)		503	(538 ct)
	935	(421 ct)		372	(340 ct)
	3799	(189 ct)		422	(219 ct)
	938	(1077 ct)		3782	(164 ct)
	898	(132 ct)		523	(1070 ct)
	829	(780 ct)		524	(193 ct)
	3031	(494 ct)		3755	(368 ct)
	3011	(400 ct)		932	(632 ct)
	535	(331 ct)		927	(1456 ct)
	3787	(391 ct)		3023	(351 ct)
	869	(640 ct)		813	(439 ct)
	830	(667 ct)		318	(843 ct)
	3829	(409 ct)		3840	(427 ct)
	782	(298 ct)		648	(149 ct)
	3012	(205 ct)		3024	(130 ct)
	3790	(236 ct)		415	(578 ct)
	831	(508 ct)		762	(233 ct)
	832	(280 ct)		162	(293 ct)
	317	(275 ct)		3756	(921 ct)
	640	(631 ct)		3865	(793 ct)