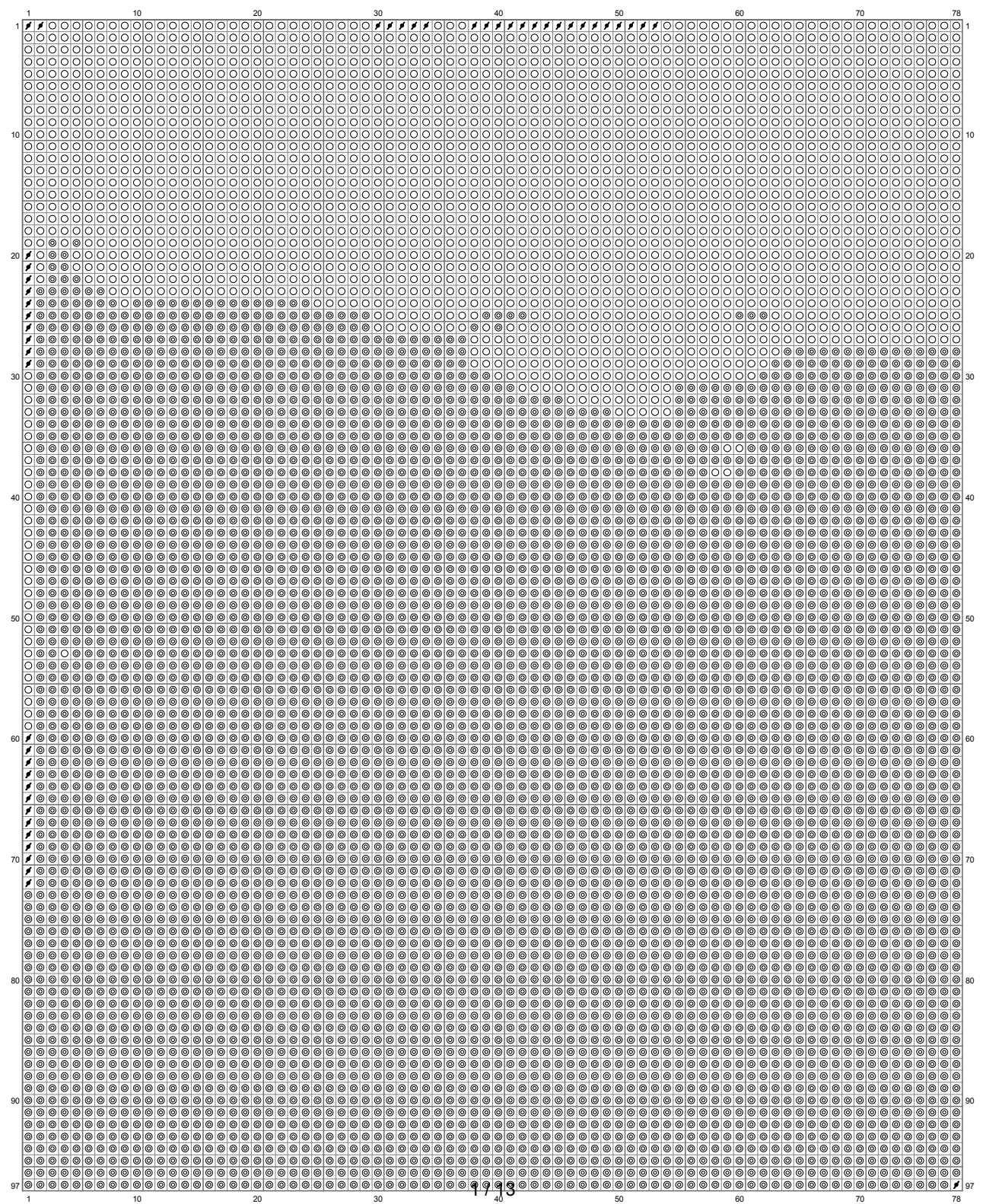
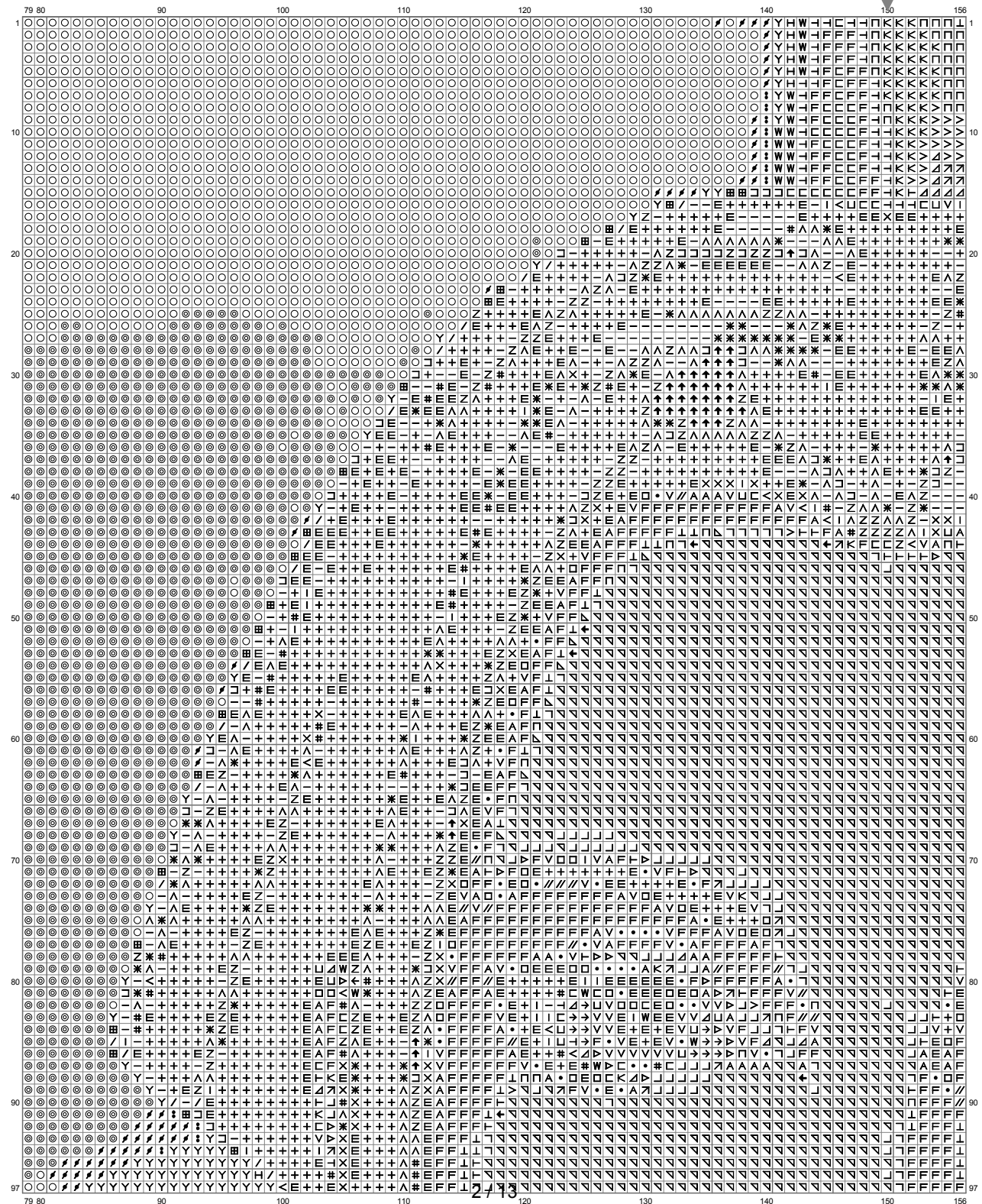


Nico (L)



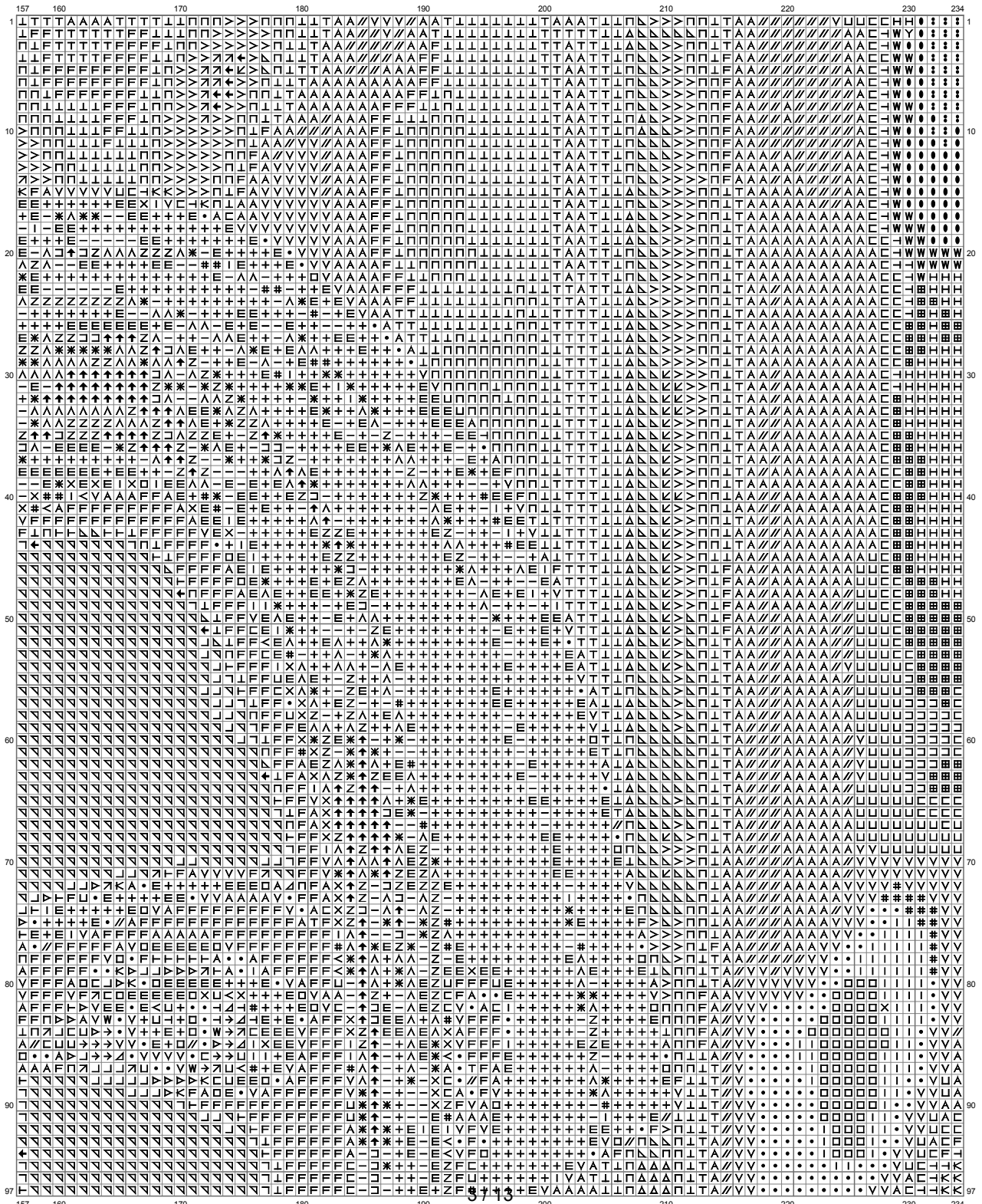
(This chart is printed using KG-Chart LE for Cross Stitch.)

# Nico (L)



(This chart is printed using KG-Chart LE for Cross Stitch.)

# Nico (L)



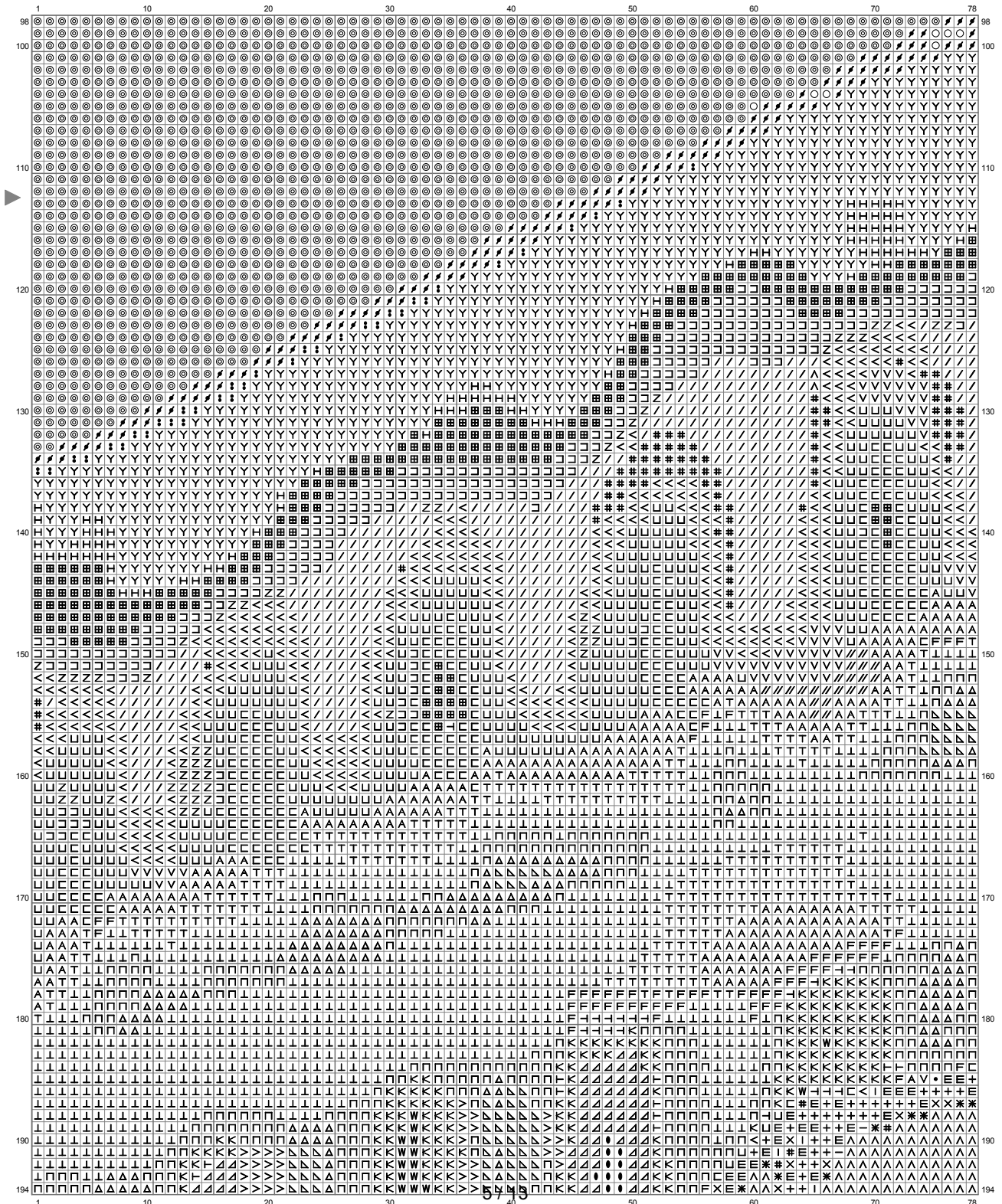
(This chart is printed using KG-Chart LE for Cross Stitch.)

## Nico (L)



(This chart is printed using KG-Chart LE for Cross Stitch.)

# Nico (L)



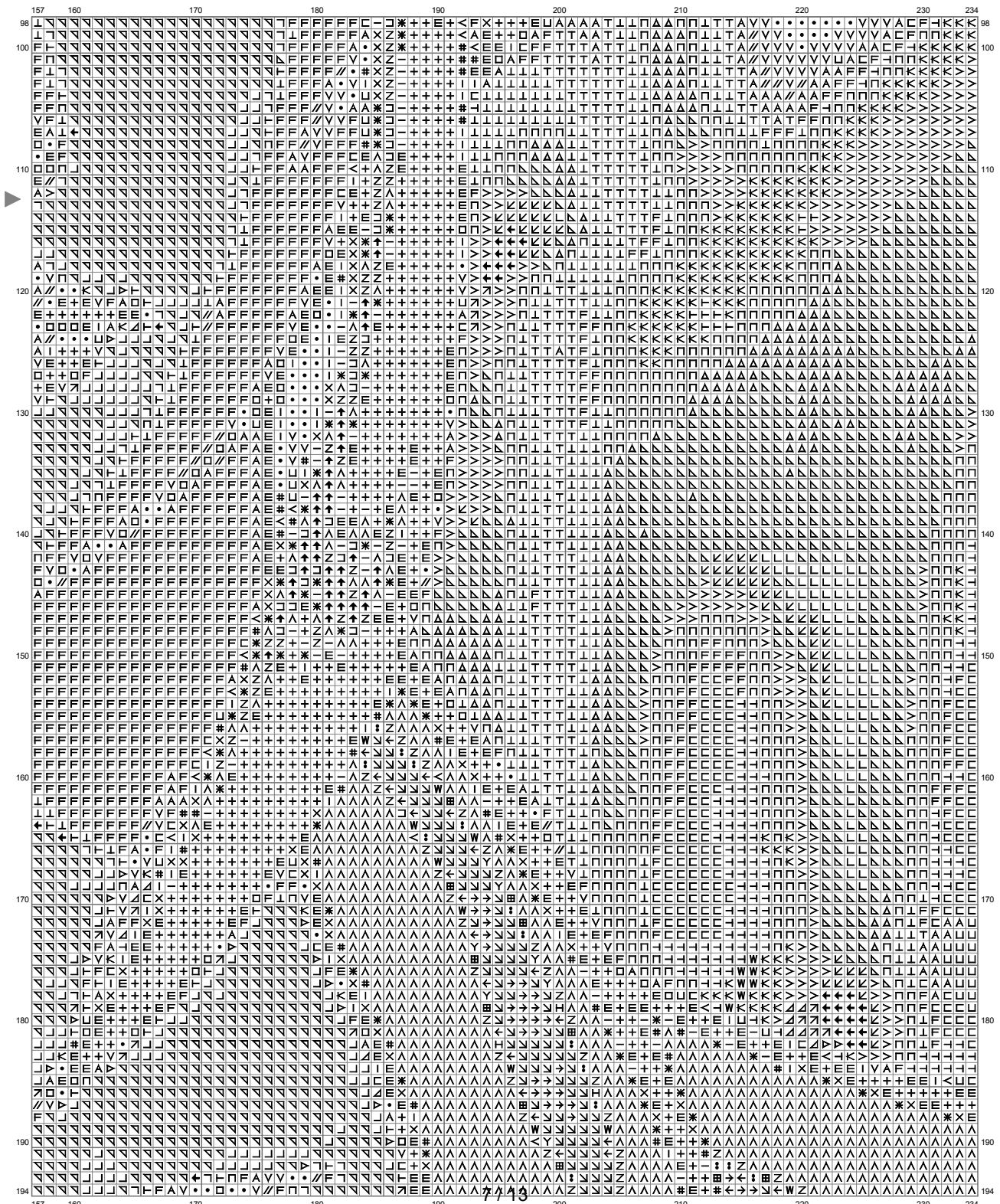
(This chart is printed using KG-Chart LE for Cross Stitch.)

# Nico (L)



(This chart is printed using KG-Chart LE for Cross Stitch.)

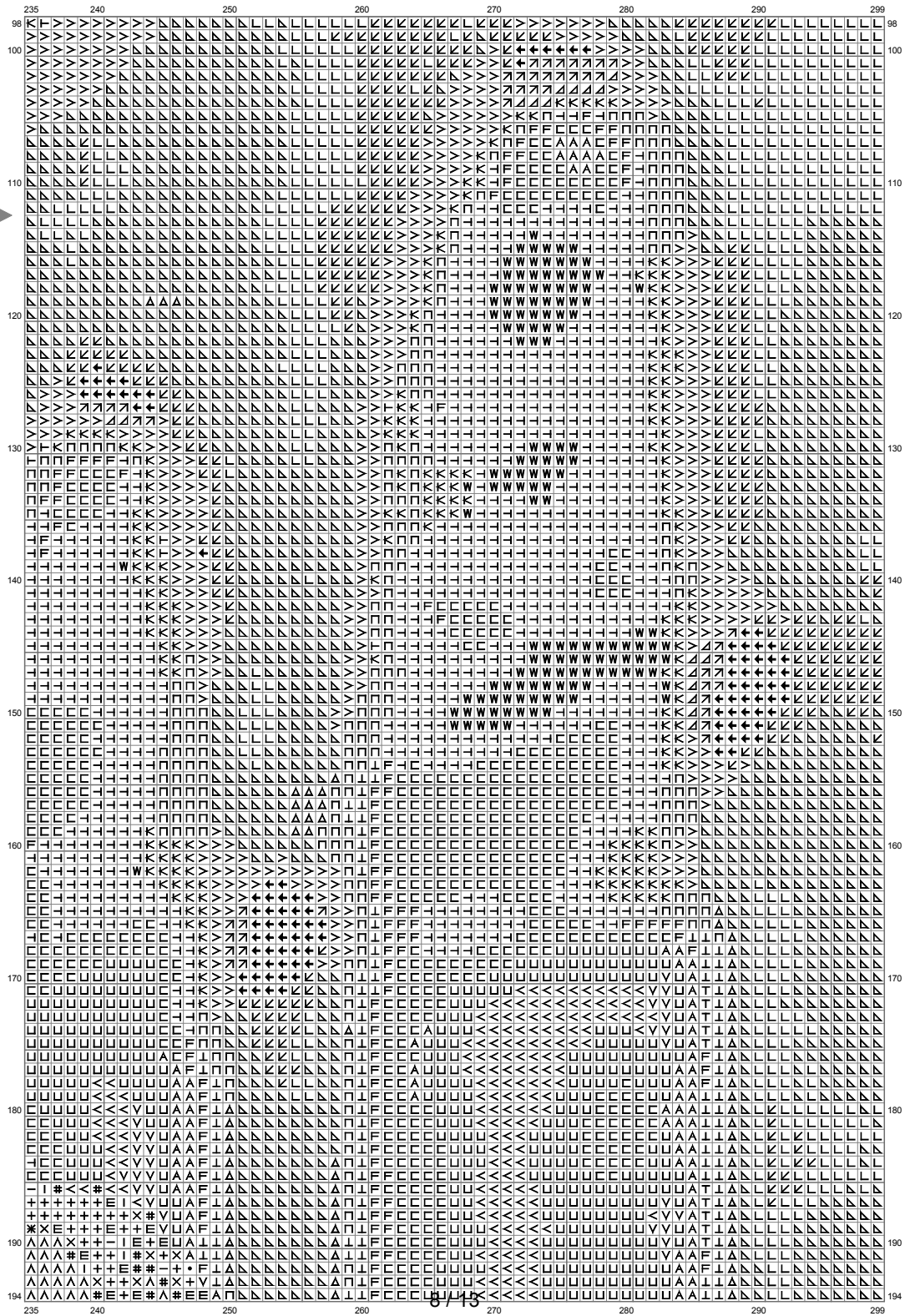
# Nico (L)



(This chart is printed using KG-Chart LE for Cross Stitch.)



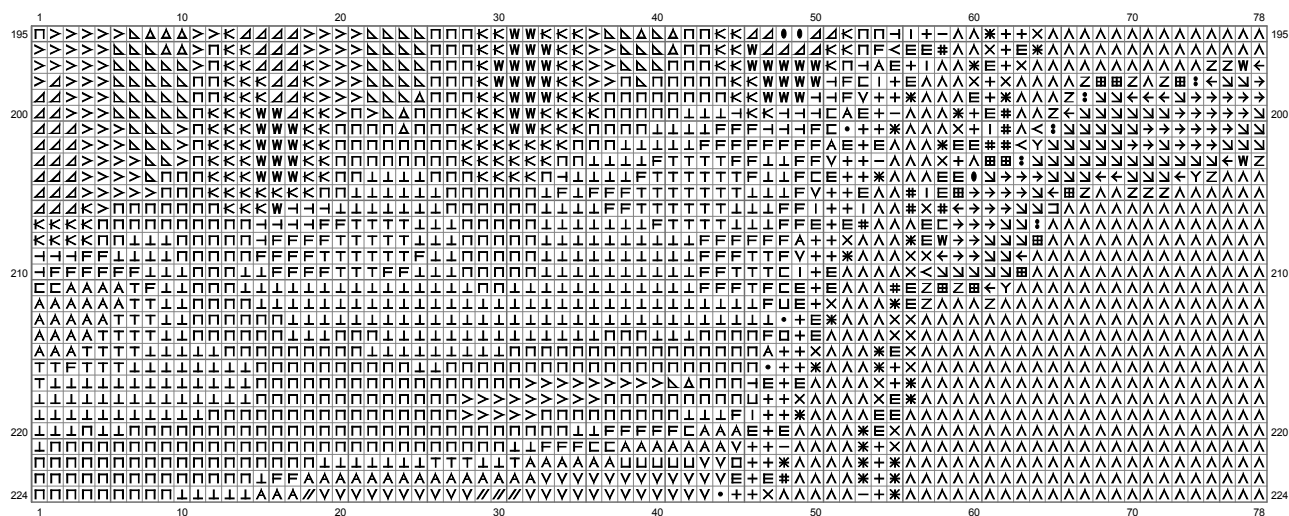
# Nico (L)



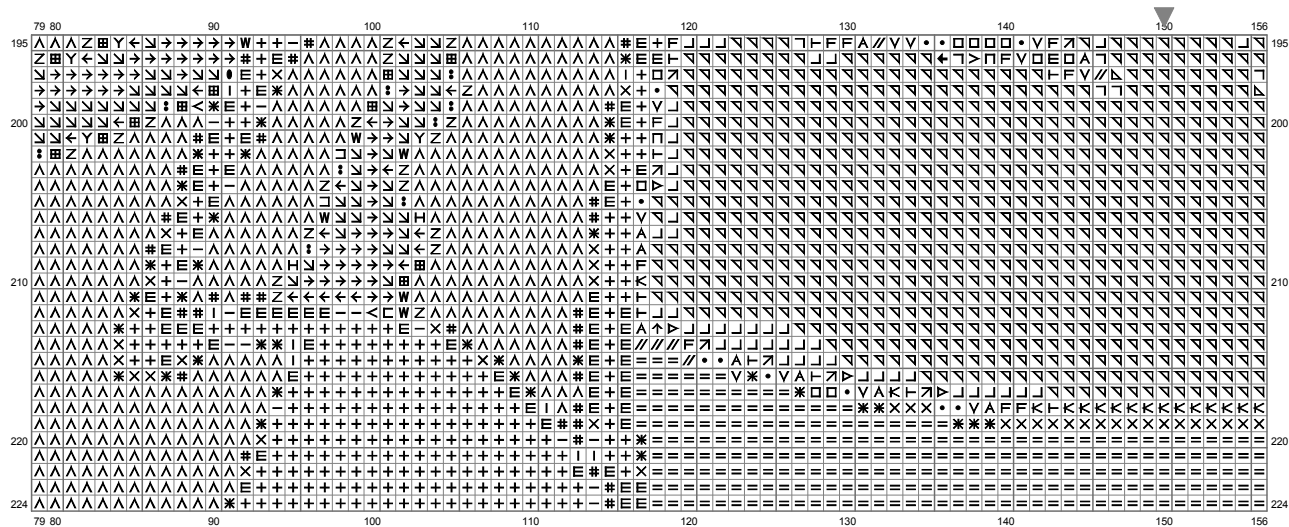
(This chart is printed using KG-Chart LE for Cross Stitch.)



# Nico (L)

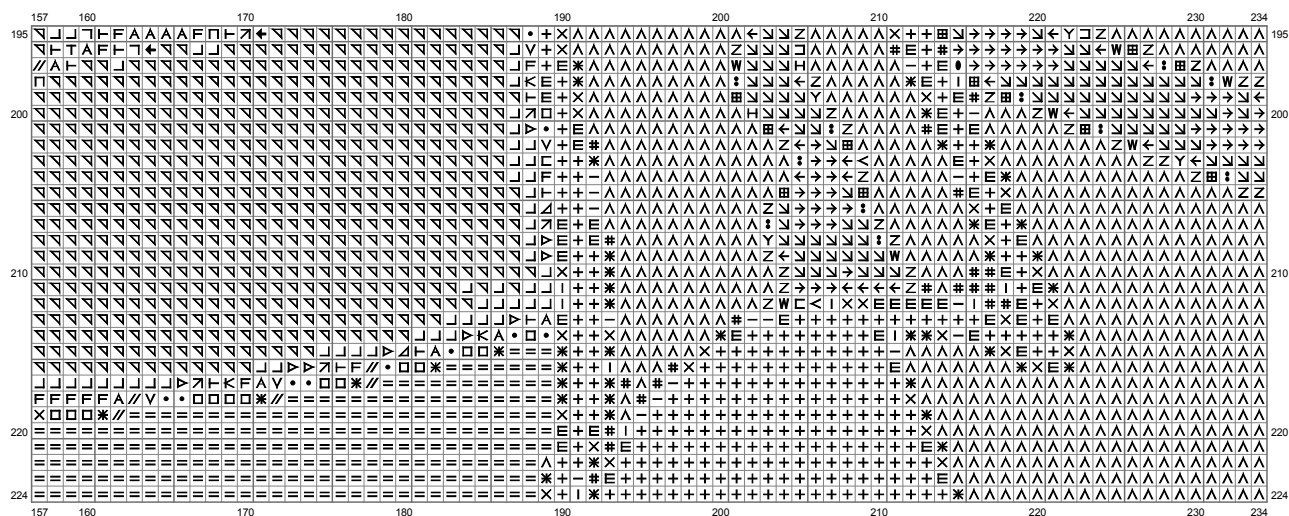


Nico (L)



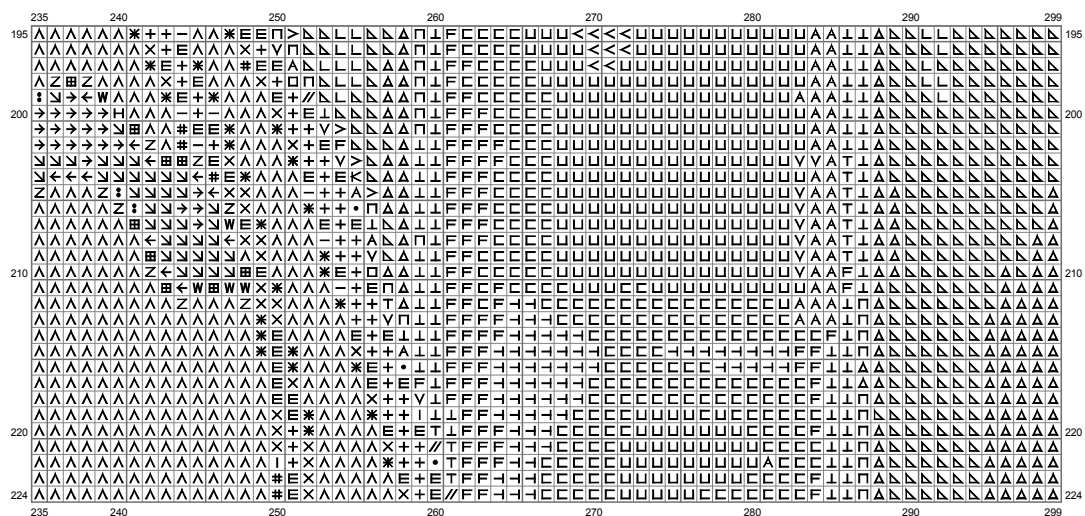
(This chart is printed using KG-Chart LE for Cross Stitch.)

# Nico (L)



(This chart is printed using KG-Chart LE for Cross Stitch.)

# Nico (L)



(This chart is printed using KG-Chart LE for Cross Stitch.)

# Nico (L)










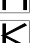

















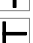









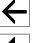
















Stitch Count:299w x 224h

Cloth:Aida Cloth's Color:White

Finished Size:108.49 cm x 81.28 cm (14 ct./inch)

Total 54 Colors

Color Table (DMC)

Cross Stitch					
	310	(4132 ct)		834	(1314 ct)
	939	(1378 ct)		322	(240 ct)
	3371	(446 ct)		3768	(537 ct)
	500	(679 ct)		926	(582 ct)
	823	(321 ct)		503	(370 ct)
	336	(479 ct)		3032	(1117 ct)
	3021	(555 ct)		3022	(512 ct)
	3799	(489 ct)		931	(1175 ct)
	3031	(733 ct)		3817	(198 ct)
	3781	(1046 ct)		932	(198 ct)
	413	(3655 ct)		519	(256 ct)
	535	(937 ct)		813	(3500 ct)
	3787	(1570 ct)		827	(7952 ct)
	924	(685 ct)		3607	(475 ct)
	317	(496 ct)		223	(29 ct)
	610	(512 ct)		612	(197 ct)
	3790	(2335 ct)		3859	(68 ct)
	640	(1655 ct)		3782	(300 ct)
	611	(2468 ct)		437	(159 ct)
	831	(1133 ct)		524	(210 ct)
	370	(3009 ct)		318	(126 ct)
	522	(1469 ct)		676	(172 ct)
	372	(2653 ct)		613	(111 ct)
	729	(718 ct)		738	(6296 ct)
	3013	(1950 ct)		945	(565 ct)
	422	(3186 ct)		168	(438 ct)
	3821	(909 ct)		415	(281 ct)