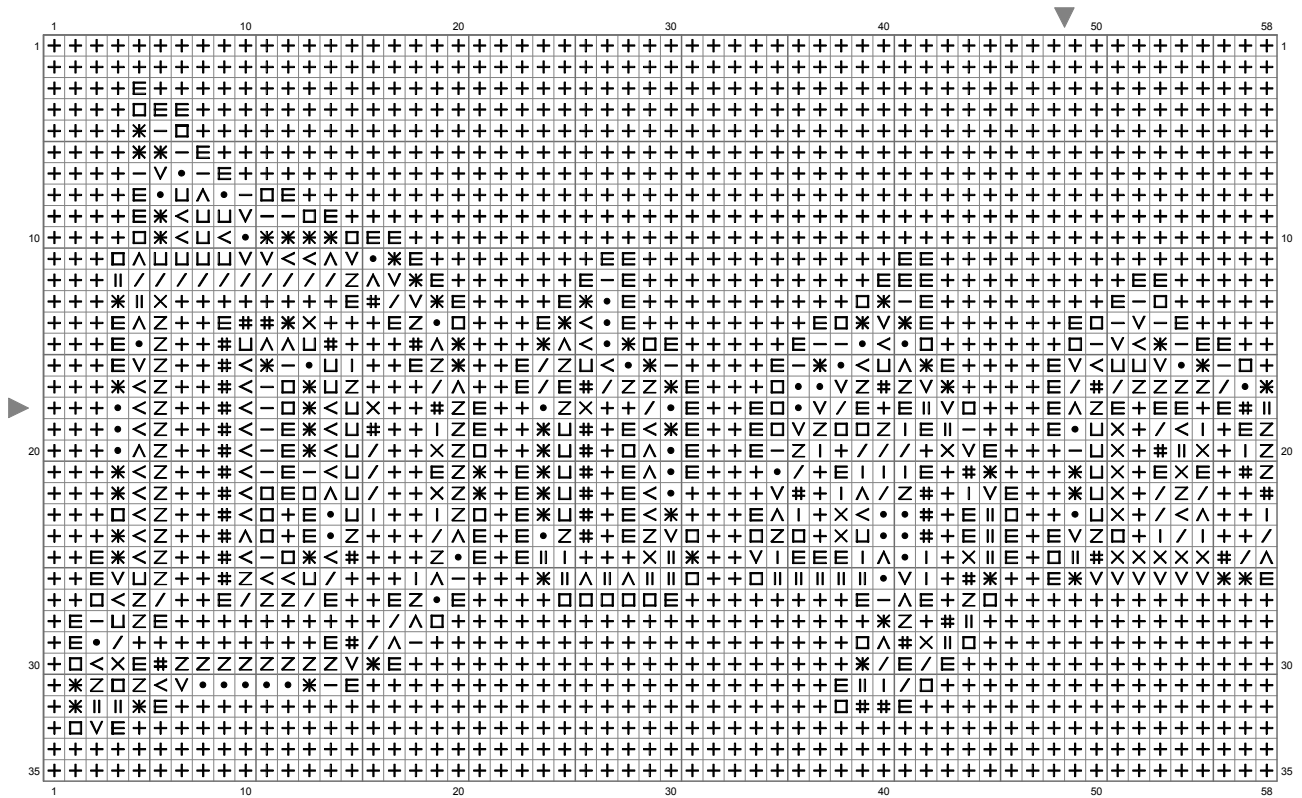
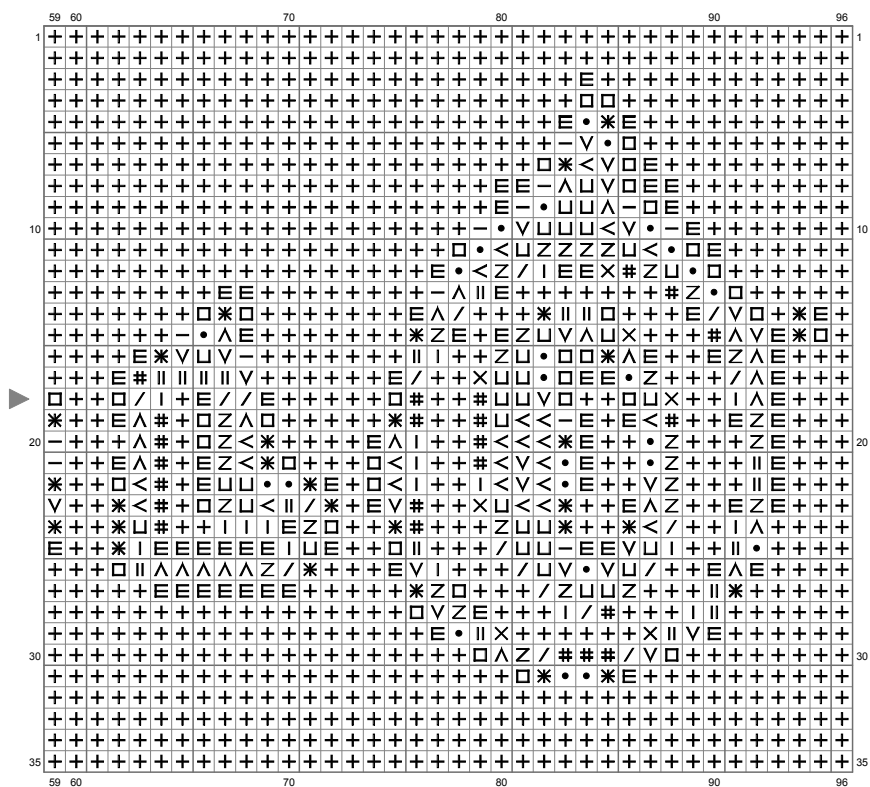


Diablo



(This chart is printed using KG-Chart LE for Cross Stitch.)

Diablo



(This chart is printed using KG-Chart LE for Cross Stitch.)

Diablo

Stitch Count:96w x 35h















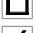

Cloth:Aida Cloth's Color:White

Finished Size:27.09 cm x 9.87 cm (18 ct./inch)

Total 16 Colors

Color Table (DMC)

Cross Stitch

	310	(2230 ct)
	939	(213 ct)
	3371	(96 ct)
	815	(48 ct)
	936	(32 ct)
	829	(97 ct)
	3362	(42 ct)
	3790	(70 ct)
	918	(73 ct)
	975	(59 ct)
	783	(55 ct)
	680	(44 ct)
	3852	(70 ct)
	972	(70 ct)
	372	(64 ct)
	3822	(97 ct)