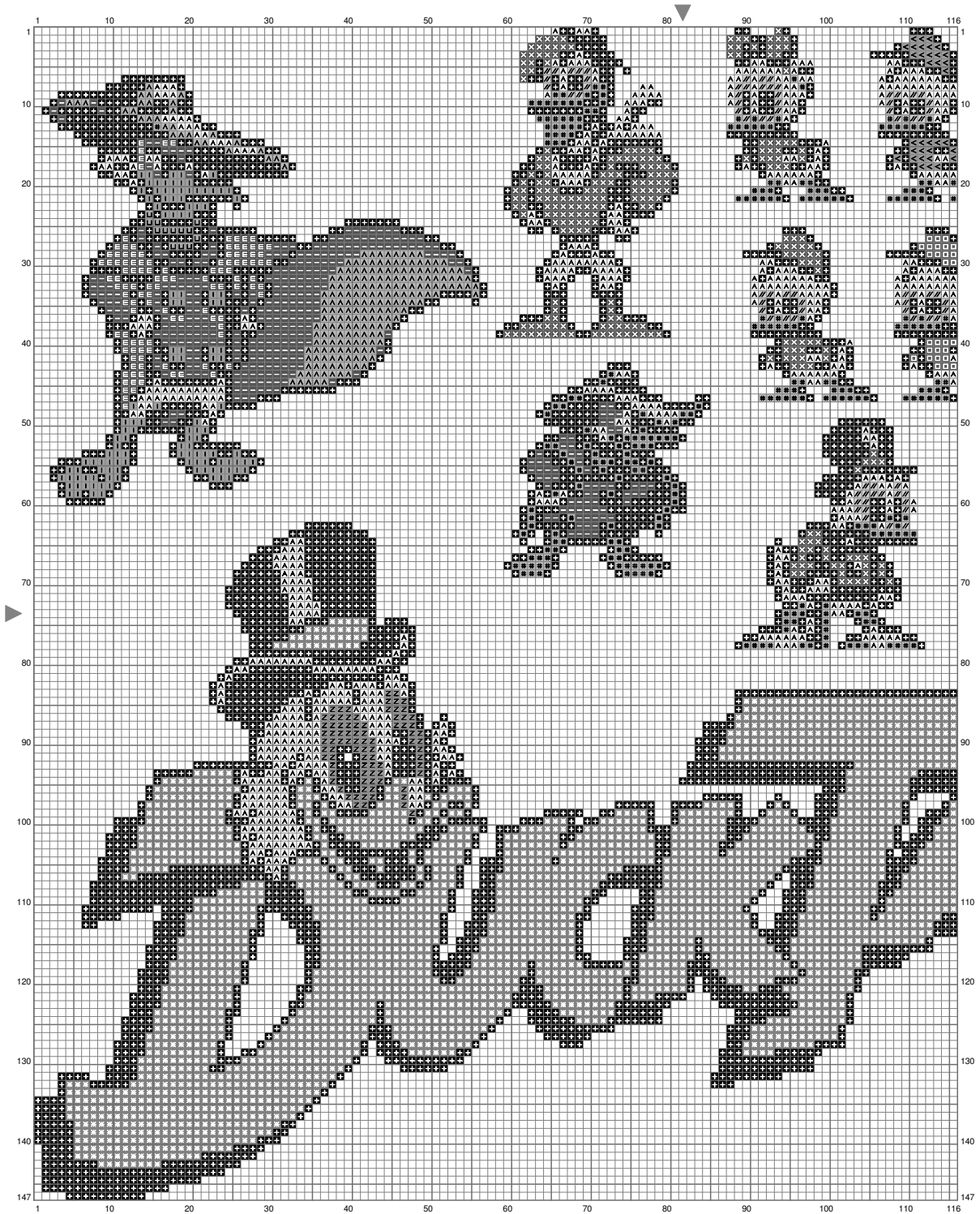
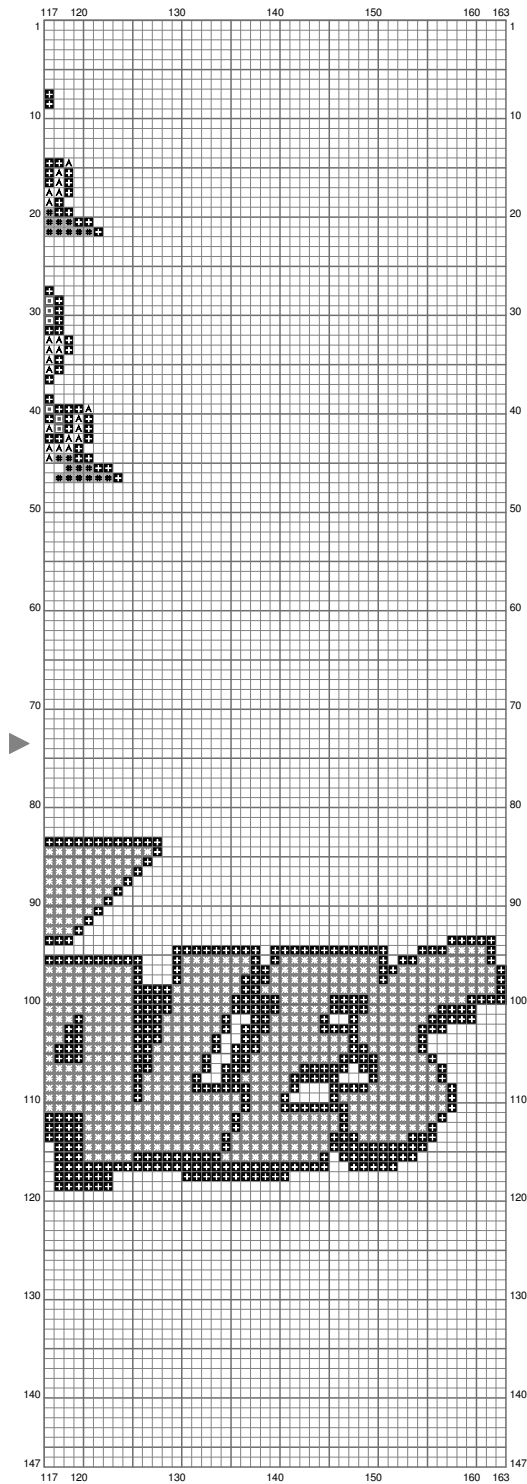


Ducktales/Darkwing



Ducktales/Darkwing



(This chart is printed using KG-Chart LE for Cross Stitch.)

Stitch Count:163w x 147h

Cloth:Aida Cloth's Color:White

Finished Size:46.00 cm x 41.48 cm

(18 ct./inch)

Total 14 Colors

Color Table (DMC)

Cross Stitch

	B5200	(763 ct)
	310	(3521 ct)
	704	(34 ct)
	741	(125 ct)
	742	(296 ct)
	797	(366 ct)
	817	(262 ct)
	820	(116 ct)
	827	(79 ct)
	946	(3221 ct)
	959	(13 ct)
	3836	(220 ct)
	3843	(34 ct)
	3845	(83 ct)