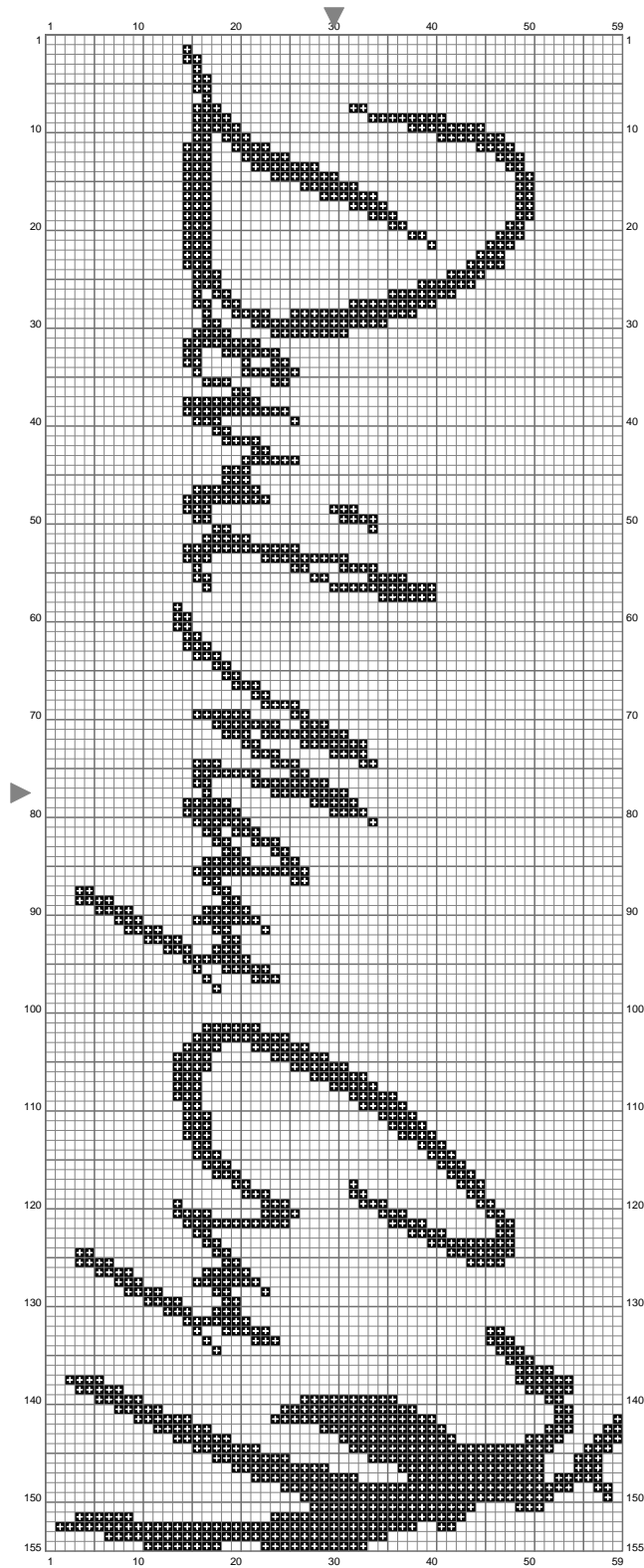


Devil My Cry



(This chart is printed using KG-Chart LE for Cross Stitch.)

Stitch Count:59w x 155h

Cloth:Aida Cloth's Color:White

Finished Size:13.62 cm x 35.79 cm
(22 ct./inch)

Total 1 Colors

Color Table (DMC)

Cross Stitch

310 (1393 ct)